



Model #s: PT-35-HS, PT-55-SS



CONSUMER: Retain this manual for future reference.

IMPORTANT: Read and understand all of the directions in this manual before assembling, starting, or servicing the heater. Improper use of this heater can cause serious injury. Keep this manual for future reference.

⚠ GENERAL HAZARD WARNING:

Be sure to comply with the instructions and warnings provided with this heater, or death, serious bodily injury and property loss, damage from the hazards of fire, explosion, burn, asphyxiation, and carbon monoxide poisoning can result.

Only persons who can follow and understand these instructions should use or service this heater. If you need heater information such as an instruction manual, labels, etcetera, contact the manufacturer.

NEVER LEAVE HEATER
UNATTENDED WHILE BURN-
ING, OR WHILE CONNECTED
TO A POWER SOURCE.



Ultra-Portable Kerosene Heaters

Table of Contents

Warnings.....	2
Features	3
Specifications	4
Safety Information	5
Theory of Operation	5
Unpacking.....	6
Wiring Diagrams	6
Fuels	7
Ventilation	7
Operation	7
Maintenance	8, 9
Storage	9
Exploded Part Breakdown.....	10
Replacement Parts.....	11
Troubleshooting Guide	12
Warranty	Back Page

WARNING:

Do not operate this heater until you have read, and thoroughly understand these safety and operating instruction. Failure to comply with the precautions and instructions provided with this heater can result in death, serious bodily injury, property loss or damage from the hazards of fire, explosion, burns, asphyxiation or carbon monoxide poisoning. Only persons who can read and understand these instructions should use or service this heater.

Not for use in homes or recreational vehicles.

California Residents: Combustion by-products produced when using this product contain carbon monoxide, a chemical known to the state of California to cause cancer and birth defects (or other reproductive harm).

Massachusetts Residents: Massachusetts state law prohibits the use of this heater in any building which is used in whole or in part for human habitation. Use of this heating device in Massachusetts requires local fire department permit (M.E.L.C. 148, Section 10A).

New York City Residents: For use only at construction sites in accordance with applicable NYCFD codes. For approval numbers contact the manufacturer 800-641-6996.

WARNING:

Fire, burn, inhalation, and explosion hazard. Keep combustibles, such as building materials, paper or cardboard, a safe distance away from the heater as recommended by these instructions. Never use the heater in spaces which contain products such as gasoline, solvents, paint thinners, dust particles, volatile or airborne combustibles, or any unknown chemicals.

WARNING:

This is an unvented portable heater. It uses air (oxygen) from the area in which it is used. Adequate combustion and ventilation air must be provided. Refer to VENTILATION Page 7.

NEVER LEAVE HEATER
UNATTENDED WHILE BURN-
ING, OR WHILE CONNECTED
TO A POWER SOURCE.



Ultra-Portable
Kerosene Heaters

Features

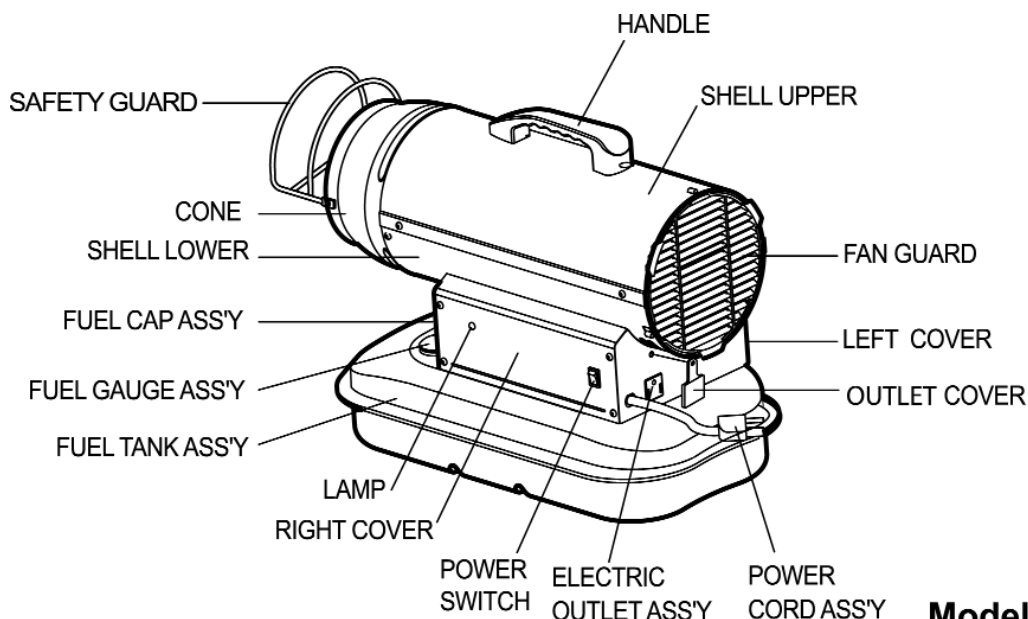


Figure 1.

Model PT-35-HS

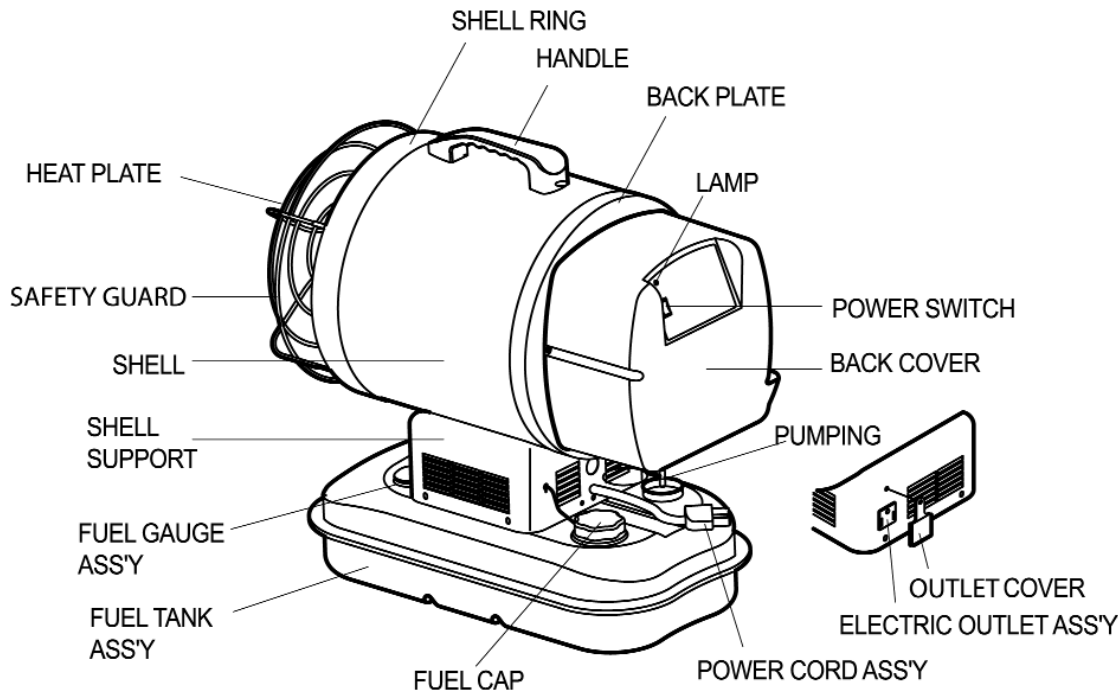


Figure 2.

Model PT-55-SS

**NEVER LEAVE HEATER
UNATTENDED WHILE BURN-
ING, OR WHILE CONNECTED
TO A POWER SOURCE.**



Ultra-Portable Kerosene Heaters

Specifications

Figure 3. Model Specifications

Model #	PT-35-HS	PT-55-SS
Rating BTU/Hr	35,000	55,000
Fuel Consumption (Gal/Hr)	.27	.42
Fuel Tank Capacity (Gallons)	3	3
Max Operating Hours	12	7
Heat Type	Fan Forced	Radiant + Fan Forced
Heating Area (Sq Ft)	900	1,400
Overheat Shut-Off System	Yes	Yes
Size (L x W x H)	22.7" x 11.1" x 16"	21.3" x 12" x 21"
Weight (Lbs)	28	31

Specifications subject to change without notice

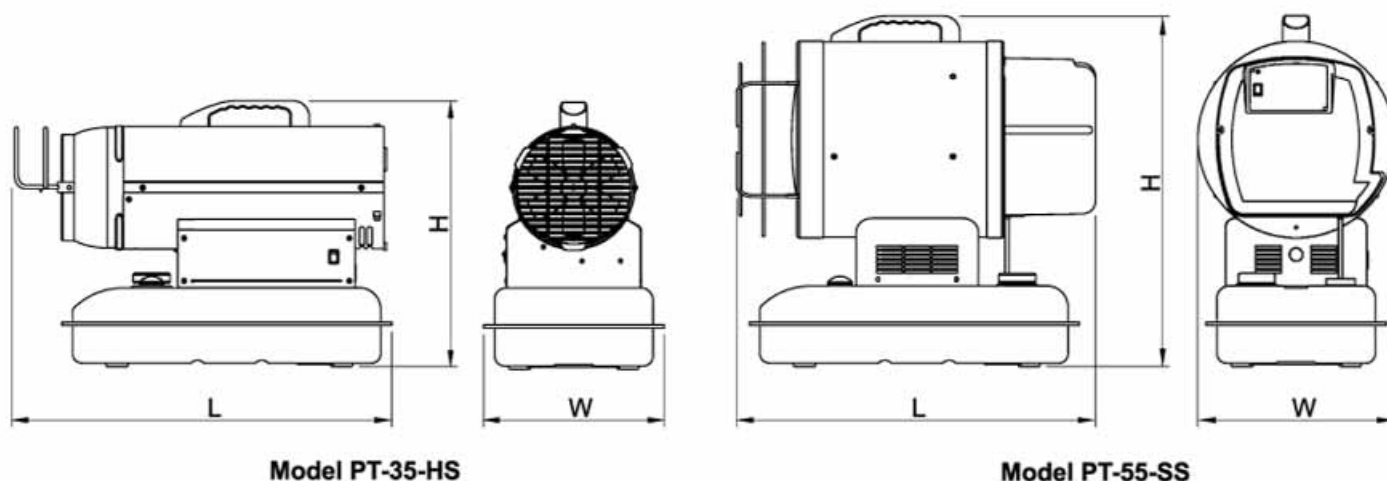


Figure 4. Product Dimensions

Model No.	Length	Width	Height
PT-35-HS	22.7"	11.1"	16"
PT-55-SS	21.3"	12"	21"

NEVER LEAVE HEATER
UNATTENDED WHILE BURN-
ING, OR WHILE CONNECTED
TO A POWER SOURCE.



Ultra-Portable Kerosene Heaters

Safety Information

Danger: Carbon Monoxide poisoning may lead to death!

This is a kerosene, direct-fired, forced air heater. It is primarily intended for use for temporary heating of buildings under construction, alteration or repair. Direct-fired means that all of the combustion products of the heater enter the heated space. This appliance is rated at 98% combustion efficiency, but does produce small amounts of carbon monoxide. Carbon monoxide is toxic. Humans can tolerate small amounts of carbon monoxide, and precautions should be taken to provide proper ventilation. Failure to provide proper ventilation in according to this manual can result in death. Early signs of carbon monoxide poisoning resemble the flu. Symptoms of improper ventilation are:

* headache * dizziness * burning of the nose and eyes
* nausea * dry mouth * sore throat *

If the heater is being used in the presence of others, be sure to inform them of all proper safety precautions, operating procedures and hazards. **Some people are more affected by carbon monoxide than others.** These are pregnant women, people with heart or lung disease or anemia, those under the influence of alcohol or at high altitudes.

- Check the heater thoroughly for damage before each use. DO NOT operate a damaged heater.
- DO NOT modify this heater or operate a heater that has been modified from it's original state.
- Use only K-1 kerosene fuel oil. Be advised that diesel fuel may NOT be used.
- NEVER use gasoline, naphtha, paint thinner, alcohol or other fuels of any kind to operate this heater.
- **For outdoor use, and indoor use only in well ventilated areas.** Provide at least 3 square feet of opening per 100,000 Btu of rated operation (See page 7).
- NEVER use heater in occupied dwellings.
- Operate heater in a manner that will not directly expose it to water, rain or dripping water.
- Keep heater area free from combustible materials such as gasoline, paint thinners and other flammable vapors and liquids. Dust is combustible. Do not use heater in areas of high dust concentration.

Minimum clearance from Combustibles:

	Top	Sides	Front
35k	3 ft.	2 ft.	6 ft.
55k	3 ft.	2 ft.	6 ft.

- Operate only on level and stable surfaces.
- Do not restrict inlet or outlet of heater. Heater is never to be used with ductwork.
- NEVER leave heater unattended.
- Keep children and animals away from heater.
- To prevent injury, always wear gloves when handling heater. Never handle an operating or hot heater, as severe burns may result.
- This heater is not for use on finished floors.
- Use heater in accordance to local codes and Federal Ordinances.
- Use only the electrical/power cord specified. Electrical and grounding connection must comply with National Electrical Code - ANSI/NFPA 70 (USA) and CSA C22.1 Canadian Electrical Code, Part 1 (Canada).

Theory of Operation

Fuel System: This heater is equipped with an air pump that operates off of the electric motor. The pump forces air through the air line connected to the fuel tank, drawing fuel to the nozzle in the burner head. Air also passes through the nozzle where it mixes with the fuel and is sprayed into the combustion chamber in a fine mist.

Quick-Fire Ignition: A transformer sends high voltage to a two pronged spark plug. The spark ignites the fuel/air mixture as it is sprayed into the combustion chamber.

Air System: A fan is turned by the heavy duty motor, which forces air around and into the combustion chamber, where it is super-heated and forced out the front of the chamber.

Electrical System Protection: The heaters' electrical system is protected by a circuit breaker that protects the system components from damage. If the heater fails, check the fuse first, and replace if necessary (see page 6).

Flame Sensor: The heater uses a photocell to "see" the flame in the combustion chamber. Should the flame extinguish, the sensor will stop electrical current and the heater will shut off.

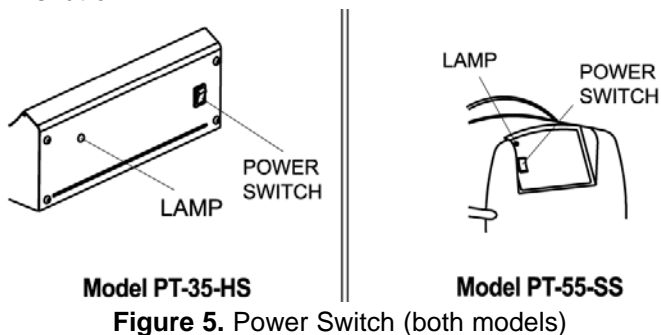


Figure 5. Power Switch (both models)

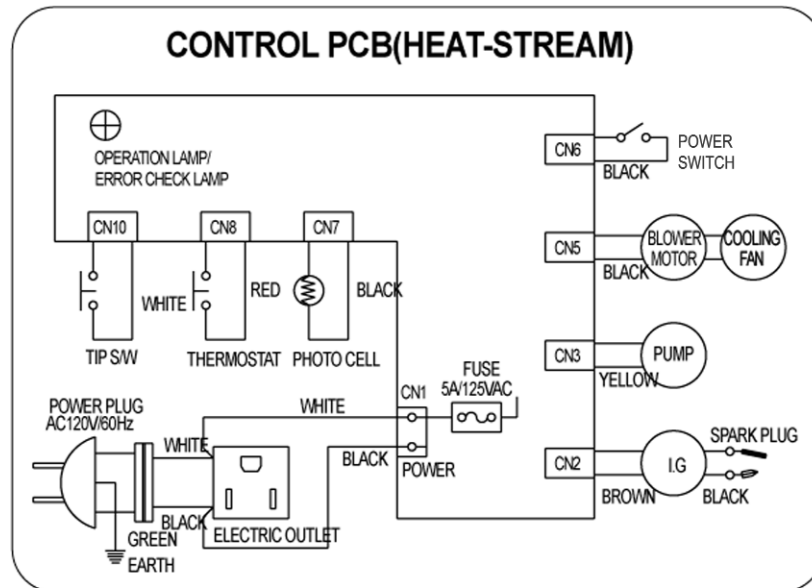


Ultra-Portable Kerosene Heaters

Unpacking Heater

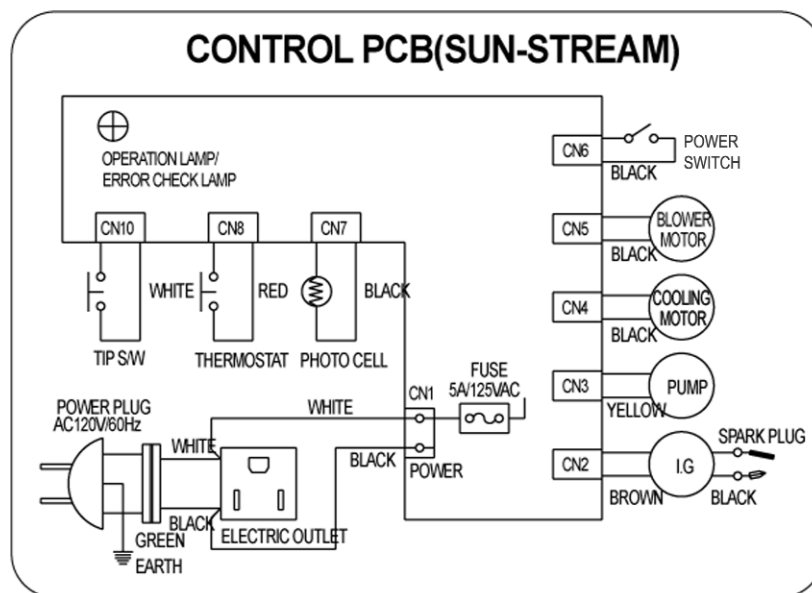
Remove the heater and all of the packaging materials from the shipping carton.

NOTE: Save the box and packaging materials for future storage.



Model PT-35-HS

Figure 6. Wiring Diagram for model PT-35-HS



Model PT-55-SS

Figure 7. Wiring Diagram for model PT-55-SS

**NEVER LEAVE HEATER
UNATTENDED WHILE BURN-
ING, OR WHILE CONNECTED
TO A POWER SOURCE.**



Ultra-Portable Kerosene Heaters

Fuel (1-K Kerosene)

When operating this heater, use 1-K kerosene only. 1-K kerosene has been refined to virtually eliminate contaminants such as sulphur. **#1 or #2 fuel oil (diesel fuel) cannot be used**, as that these fuels do not burn as clean as 1-K kerosene.

Kerosene should only be stored in a blue container that is clearly marked “kerosene”. Never store kerosene in a red container, because red containers are associated with gasoline.

Never store kerosene in a living area. Kerosene should always be stored in a well ventilated area outside of the living space.

Never store kerosene in direct sunlight or near any heating source.

Never use kerosene that has been stored from one season to the next. Kerosene does break down over time.

Old kerosene will not burn properly in this heater.

⚠ WARNING! Never use fuels such as gasoline, benzene, alcohol, white gas, camp stove fuel, paint thinners or other oil products to fuel this heater. These are volatile fuels that could cause an explosion or uncontrolled flame.

Fueling the Heater

Never fill the fuel tank indoors. Always fill the tank outdoors. Be sure that the heater is on level ground when fueling, and never overfill the fuel tank.

It is always a good idea to fire the heater outdoors for the first time. This will allow any oils used in the manufacturing process to be burned off in a safe environment. This initial burn should last at least 10 minutes.

Ventilation

⚠ WARNING! NEVER REFUEL THIS HEATER WHILE IT IS HOT OR OPERATING. FIRE OR EXPLOSION COULD RESULT.

⚠ WARNING! Always provide a fresh air opening in the heated space of **at least** one square foot (900 sq. cm) for the Heat-Stream and two square feet (1,800 sq. cm) for the Sun-Stream. Provide a larger opening if more heaters are being used. As an example, a PT-55-SS (55,000 BTU/hr) heater will require:

- a two-car garage door open 2 inches, or
- a single car garage open 3 inches, or
- two thirty two inch wide windows open 4 inches.

Operation

To Start the Heater

1. Fill the tank with kerosene until fuel gauge points to “F”.
2. Be sure fuel cap is secure.
3. Plug power cord into three prong, grounded extension cord and plug extension cord into three prong 120V grounded outlet. The extension cord should be at least six feet long.

Extension cord wire size requirements are as follows:

- 6 to 10 feet (1.8 to 3 meters), use 18 AWG wire.
 - 11 to 100 feet (3.4 to 30.4 meters), use 16 AWG wire.
 - 101 to 200 feet (30.8 to 61 meters), use 14 AWG wire.
4. Push the Power switch to the “ON” position. The power indicator lamp will light and the heater will start.

NOTE: The electrical components of this heater are protected by a fuse mounted in the PC board. If the heater fails to fire, check this fuse first, and replace if necessary. Also check the power source to be sure that the proper voltage is being provided to the heater.

To Stop the Heater

1. Turn the Power switch to “OFF” position. Combustion will stop, and the Cooling Cycle (approx. 4-5 minutes) will begin.
2. When Cooling Cycle is completed (fan stops running), it is safe to unplug the heater.

⚠ WARNING! DO NOT DISCONNECT THE POWER SOURCE OR UNPLUG THE POWER CORD UNTIL THE COOLING CYCLE HAS BEEN COMPLETED!

Unplugging the unit before the Cooling Cycle has ended may cause overheating, possible damage the heater and could void the warranty.

To Restart the Heater

1. Wait ten seconds after shutting off heater.
2. Turn the Power Switch to “ON” position.
3. Be sure to follow all starting procedure precautions.

**NEVER LEAVE HEATER
UNATTENDED WHILE BURN-
ING, OR WHILE CONNECTED
TO A POWER SOURCE.**



PROTEMP

Ultra-Portable Kerosene Heaters

Electrical Outlet

⚠ Warning! Shock Hazard!

- Never plug in an appliance with more than a 5 amp rating into this outlet.
- Always keep outlet covered when not in use.

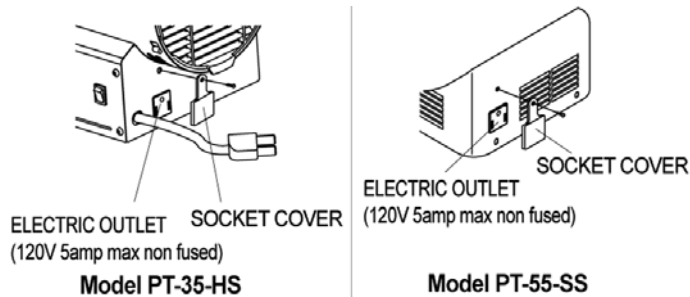


Figure 8. Electric Outlet detail

Maintenance

⚠ WARNING! NEVER SERVICE HEATER WHILE HOT OR STILL CONNECTED TO ELECTRICAL SOURCE.

Use only original equipment replacement parts. The use of alternate or third party components can cause unsafe operating conditions, and will void your warranty.

We suggest following a maintenance schedule as follows:

Fuel/Fuel Tank - Flush every 200 hours of operation or as needed. Do not use water to flush the tank. Use fresh 1-K kerosene only.

Filters - The Fuel Filter and Oil Filter should be cleaned at least twice per heating season by rinsing it in clean 1-K kerosene. Contaminated fuel could make this necessary immediately (see Figure 9).

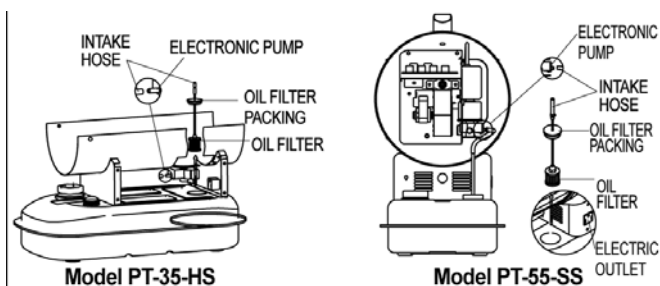


Figure 9. Filter Maintenance

Fan Blades - Warning! Never service heater while hot or still connected to electrical source. The fan blades should be cleaned at least once per heating season, depending on conditions.

Remove all accumulated dust and dirt with a damp cloth, taking care not to bend any of the fan blades. Be sure fan blades are dry before re-starting the heater (Figure 10).

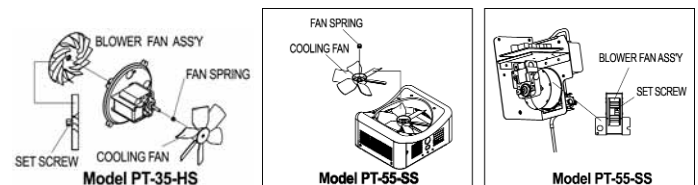


Figure 10. Fan Maintenance

Nozzles - Nozzles should be cleaned or replaced at least once per heating season. Contaminated fuel could make this necessary immediately.

To clean dirt from nozzle, blow compressed air through nozzle front. It may be necessary to soak nozzle in clean 1-K kerosene to help loosen any particles (Figure 11).

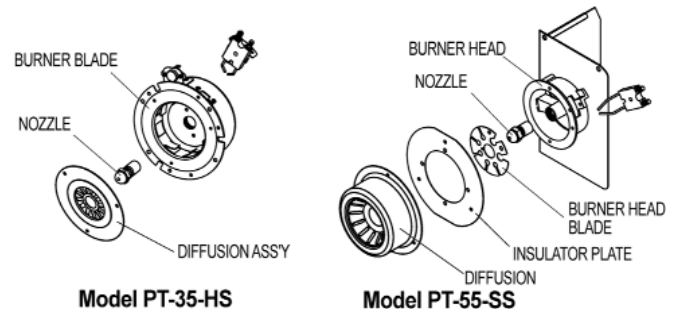


Figure 11. Nozzle Maintenance

Spark Plug - Clean and re-gap every 600 hours of operation, or replace as needed.

After removing the Spark Plug, clean the terminals with a wire brush. Re-gap the terminals to 0.140" (3.5mm).

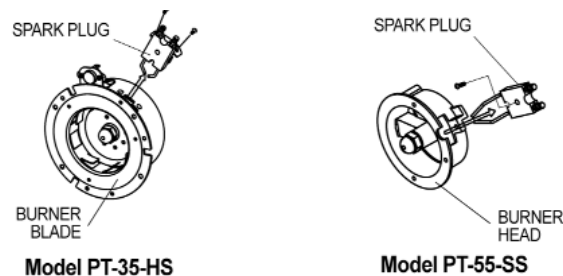


Figure 12. Spark Plug Maintenance

**NEVER LEAVE HEATER
UNATTENDED WHILE BURN-
ING, OR WHILE CONNECTED
TO A POWER SOURCE.**



PROTEMP

**Ultra-Portable
Kerosene Heaters**

Photocell - The Photocell should be cleaned at least once per heating season or more depending on conditions. Use a cotton swap dipped in water or alcohol to clean the lens of the Photocell. Note the proper Photocell position as noted in **Figure 13**.

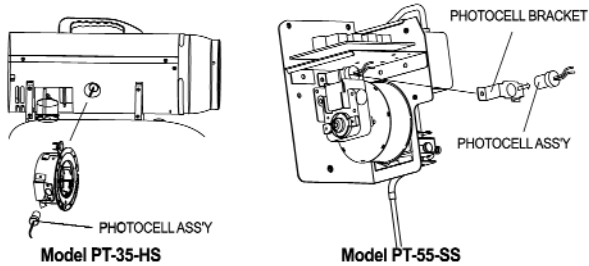


Figure 13. Photocell position

Long Term Storage

1. Unscrew the Fuel Cap.
2. Using a kerosene siphon, remove kerosene.
3. Using a small amount of kerosene, rinse and swirl the kerosene inside of the Fuel Tank. Empty the tank fully. **NEVER MIX WATER WITH KEROSENE**, as it will cause rust inside the tank.
4. Empty tank fully.

Never store leftover kerosene over the summer. Using old fuel can damage your heater.

Store heater in a dry, well-ventilated area

Be sure that the storage area is free of dust and corrosive vapors. Repack the heater in the original shipping material. Keep the Owner's Manual in an easily accessible place.

NEVER LEAVE HEATER
UNATTENDED WHILE BURN-
ING, OR WHILE CONNECTED
TO A POWER SOURCE.



PROTEMP

Ultra-Portable
Kerosene Heaters

Exploded Drawing Part Breakdown

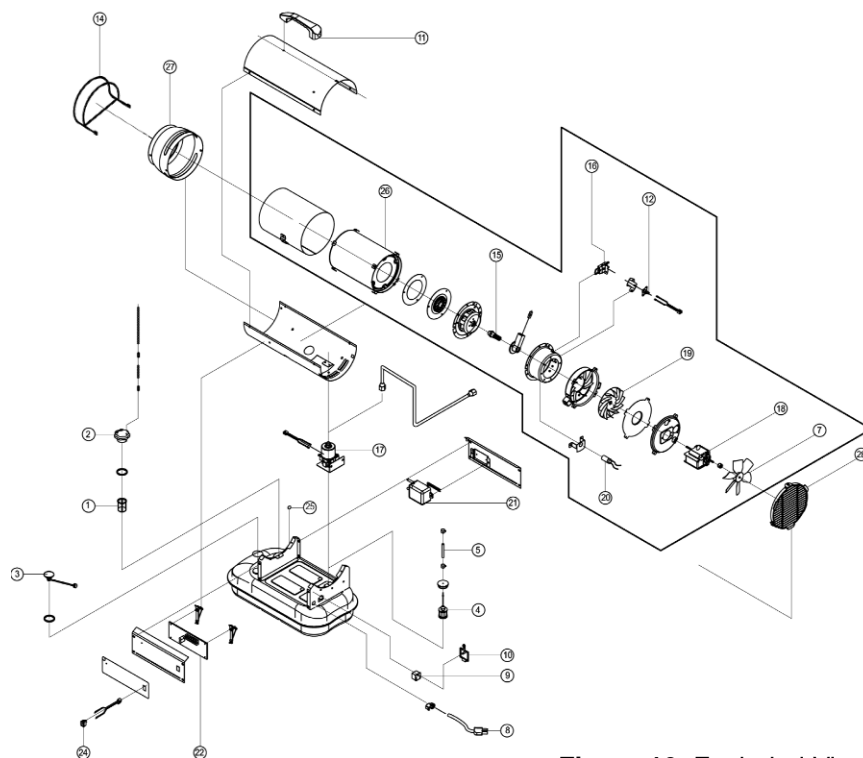


Figure 16. Exploded View: PT-35-HS

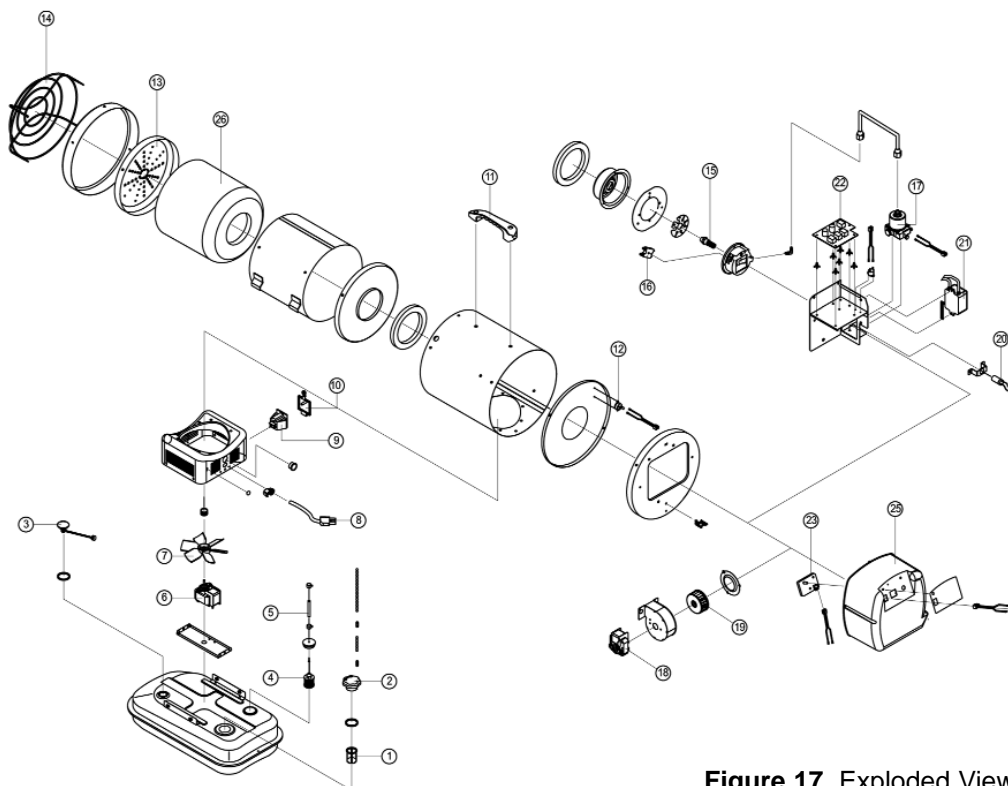


Figure 17. Exploded View: PT-55-SS

**NEVER LEAVE HEATER
UNATTENDED WHILE BURN-
ING, OR WHILE CONNECTED
TO A POWER SOURCE.**



**Ultra-Portable
Kerosene Heaters**

Replacement Parts

Item #	Description	PT-35-HS	PT-55-SS
1	Fuel Filter Assy	75-020-0100	75-020-0100
2	Fuel Cap Assy	70-006-0100	70-006-0100
3	Fuel Gauge Assy	75-022-0100	75-022-0100
4	Oil Filter Assy	75-023-0100	75-023-0200
5	Intake Hose (fuel)	75-024-0100	75-024-0500
6	Cooling Motor Assy	-	75-047-0100
7	Cooling Fan Assy	75-046-0100	75-046-0100
8	Power Cord Assy	75-032-0100	75-032-0150
9	Electric Outlet Assy	70-029-0100	70-029-0100
10	Socket Cover	70-030-0100	70-030-0100
11	Handle	70-001-0103	70-001-0103
12	Thermostat	70-019-0100	75-040-0100
13	Heat Plate	-	75-012-0400
14	Safety Guard (Grille)	75-012-0250	75-012-0300
15	Nozzle	75-036-0200	75-036-0250
16	Spark Plug	75-037-0100	75-037-0150
17	Electronic Pump Assy	75-027-0100	75-027-0200
18	Blower Motor Assy	75-045-0100	75-045-0150
19	Blower Fan Assy	75-043-0100	75-043-0150
20	Photocell Assy	75-038-0100	75-038-0100
21	Ignitor assy	75-025-0100	75-025-0200
22	PCB Assy	75-025-0150	75-025-0250
23	Sub-PCB Assy	-	75-013-0110
24	Power Switch	75-012-0100	75-012-0100
25	Back Cover	-	75-013-0100
26	Chamber / Insulator	75-035-0150	75-035-0570
27	Cone	75-011-0400	-
28	Fan Guard	75-011-0500	-

**NEVER LEAVE HEATER
UNATTENDED WHILE BURN-
ING, OR WHILE CONNECTED**



Ultra-Portable Kerosene Heaters

Problem	Possible Cause	Solution
Heater fires, but shuts down after a short period of time.	<ol style="list-style-type: none"> 1. Dirty Fuel Filter 2. Nozzle Dirty 3. Photocell Dirty 4. Photocell not installed properly 5. Photocell Defective 6. Improper electrical connection between Circuit Board and Photocell 	<ol style="list-style-type: none"> 1. Clean/replace Fuel Filter (Page 8). 2. Clean/replace Nozzle (Page 8). 3. Clean/replace Photocell (Page 9). 4. Adjust Photocell position. 5. Replace Photocell. 6. Check wiring connections (See Wiring Diagrams, Page 6).
Heater will not operate, or motor runs for short time.	<ol style="list-style-type: none"> 1. No kerosene in fuel tank 2. Corroded Spark Plug or incorrect plug gap 3. Dirty Fuel Filter 4. Dirty Nozzle 5. Moisture in Fuel/Fuel Tank 6. Improper electrical connection between Transformer and Circuit Board 7. Transformer Wire not connected to Spark Plug. 8. Defective Transformer 	<ol style="list-style-type: none"> 1. Fill tank with fresh kerosene. 2. Clean/replace Spark Plug (Page 8). 3. Clean/replace Fuel Filter (Page 8). 4. Clean/replace Nozzle (Page 8). 5. Rinse out fuel tank with clean fresh kerosene (Page 9). 6. Inspect all electrical connections. (See Wiring Diagrams, Page 6). 7. Re-attach Transformer wire to Spark Plug. 8. Replace Transformer.
Fan does not operate when heater is plugged in and Power Switch is in the "ON" position.	<ol style="list-style-type: none"> 1. Broken electrical connection between Circuit Board and motor. 	<ol style="list-style-type: none"> 1. Inspect all electrical connections on Wiring Diagrams (Page 6)
Heater does not turn on and the lamp is not lit.	<ol style="list-style-type: none"> 1. Temperature limit sensor has over-heated. 2. No electrical power. 3. Fuse Blown. 4. Improper electrical connection between Temperature Limit Sensor and Circuit Board. 	<ol style="list-style-type: none"> 1. Push Power Switch to "OFF" and allow heater to cool for 5 minutes. Push Power Switch to back to "ON". 2. Check power cord and extension cord to insure of proper connection. Test power supply. 3. Check/replace Fuse. 4. Inspect all electrical connections. (See Wiring Diagrams, Page 6).

NEVER LEAVE HEATER
UNATTENDED WHILE BURN-
ING, OR WHILE CONNECTED
TO A POWER SOURCE.



Ultra-Portable
Kerosene Heaters

1 YEAR LIMITED WARRANTY

Pinnacle Products International, Inc. warrants this heater to the original retail purchaser only, to be free from defects in material and workmanship for a period of one (1) year from the date of initial purchase. This product must be properly installed, maintained and operated in accordance with the instructions provided.

Pinnacle Products International, Inc. requires reasonable proof of your date of purchase from an authorized retailer or distributor. Therefore, you should keep your sales slip, invoice, or cancelled check from the original purchase. This Limited Warranty shall be limited to the repair or replacement of parts, which prove defective under normal use and service within the warranty period, and which **Pinnacle Products International, Inc.** shall determine at its reasonable discretion.

This warranty does not apply to products purchased for rental use.

This Limited Warranty does not cover any failures or operating difficulties due to normal wear and tear, accident, abuse, misuse, alteration, misapplication, improper installation or improper maintenance and service by you or any third party. Failure to perform normal and routine maintenance on the heater, shipping damage, damage related to insects, birds, or animals of any kind, and damage due to weather conditions are also not covered. In addition, the Limited Warranty does not cover damage to the finish, such as scratches, dents, discoloration, rust or other weather damage, after purchase.

All transportation costs for the return of the damaged product or parts will be the responsibility of the purchaser. Upon receipt of damaged item, **Pinnacle Products International, Inc.** will examine the item and determine if defective. Pinnacle Products International, Inc. will repair or replace and return the item, freight pre-paid. If **Pinnacle Products International, Inc.** finds the item to be in normal operating condition, or not defective, the item will be returned freight collect.

This Limited Warranty is in lieu of all other express warranties. **Pinnacle Products International, Inc.** disclaims all warranties for products that are purchased from sellers other than authorized retailers or distributors.

AFTER THE PERIOD OF THE ONE (1) YEAR LIMITED WARRANTY EXPIRES, **Pinnacle Products International, Inc.** DISCLAIMS ANY AND ALL IMPLIED WARRANTIES, INCLUDING WITHOUT LIMITATION THE IMPLIED WARRANTIES OF MERCHANTABILITY AND FITNESS FOR A PARTICULAR APPLICATION. FURTHER, **Pinnacle Products International, Inc.** SHALL HAVE NO LIABILITY WHATSOEVER TO PURCHASER OR ANY THIRD PARTY FOR ANY SPECIAL, INDIRECT, PUNITIVE, INCIDENTAL, OR CONSEQUENTIAL DAMAGES. **Pinnacle Products International, Inc.** assumes no responsibility for any defects caused by third parties. This Limited Warranty gives the purchaser specific legal rights; a purchaser may have other rights depending upon where he or she lives. Some states do not allow the exclusion or limitation of special, incidental or consequential damages, or limitations on how long a warranty lasts, so the above exclusion and limitations may not apply to you.

Pinnacle Products International, Inc. does not authorize any person or company to assume for it any other obligation or liability in connection with the sale, installation, use, removal, return, or replacement of its equipment, and no such representations are binding on **Pinnacle Products International, Inc.**

Always be sure to specify model number and serial number when making any claim with **Pinnacle Products International, Inc.** For your convenience use the space provided below to list this information:

Model #: _____

Serial #: _____

Date of Purchase: _____