



*The Symbol of
Excellence*

**Fireplace
Manufacturers
Incorporated**

*The Presidential
Series*

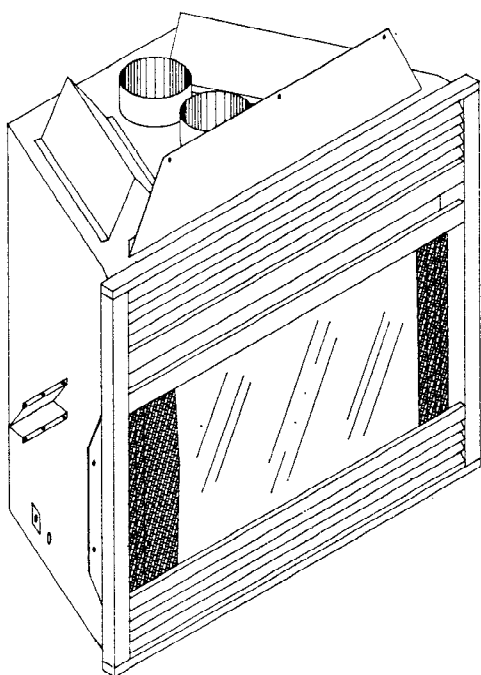
**TV2000
TV2000P**

VENTED TYPE
DECORATIVE GAS
APPLIANCE WITH
MILLIVOLT
IGNITION SYSTEM

INSTALLATION INSTRUCTIONS

SAVE THIS BOOK

This book is valuable. In addition to instructing you on how to install and maintain your appliance, it also contains information that will enable you to obtain replacement parts or optional accessory items when needed. Keep it with your other important papers.



WARNING : THE DECORATIVE GAS APPLIANCE SERIES IS INTENDED FOR USE WITH **NATURAL OR PROPANE GAS ONLY** ! (DEPENDING ON THE TYPE OF GAS YOUR PARTICULAR MODEL IS APPROVED FOR.) **DO NOT ATTEMPT TO BURN ANY SOLID FUELS IN THESE APPLIANCES.**

FOR YOUR SAFETY

- Do not store or use gasoline or any other flammable vapors or liquids in the vicinity of this or any other appliance.
- Due to high temperatures, the appliance should be located out of traffic and away from furniture and draperies.
- Do not place clothing or other flammable materials on or near the appliance.
- **NEVER** leave children unattended when a fire is burning in the appliance.

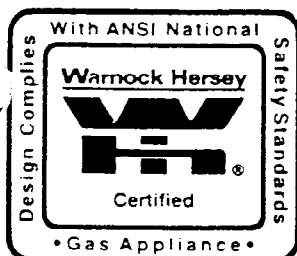
FOR YOUR SAFETY,

WHAT TO DO IF YOU SMELL GAS :

- Do not try to light any appliance.
- Do not touch any electrical switch;
- Do not use any phone in your building.
- Immediately call your gas supplier from a neighbor's phone. Follow the gas supplier's instructions.
- If you cannot reach your gas supplier, call the fire department.

WARNING: Improper installation, adjustment, alteration, service or maintenance can cause injury or property damage. Refer to this manual. For assistance or additional information consult a qualified installer; service agency or the gas supplier.

CHECK LOCAL CODES PRIOR TO INSTALLATION



CONTENTS

1. Introduction	Pg.2	11. Glass Panel Removal & Log Set Installation	Pg.8,9
2. Selecting Location	Pg.2,3	12. Pilot Assembly Adjustment	Pg.9
3. Clearances	Pg.3	13. Burner Flame Adjustment	Pg.9
4. Mantle Clearances	Pg.3	14. Decorative Facing	Pg.9
5. Vent Clearances	Pg.3,4,5	15. Millivolt Control Operations Instructions	Pg.10
6. Coupler Installation (Optional)	Pg.5	16. Maintenance Instructions	Pg.11
7. Framing	Pg.5,6	17. Replacement & Accessory Parts	Pg.11,12
8. Gas Supply Testing	Pg.7	18. Wiring Diagram	Pg.12
9. Gas Line Hook-Up	Pg.7,8	19. Troubleshooting Guide	Pg.13
10. Wall Switch Installation	Pg.8	20. Warranty Information	Pg.14

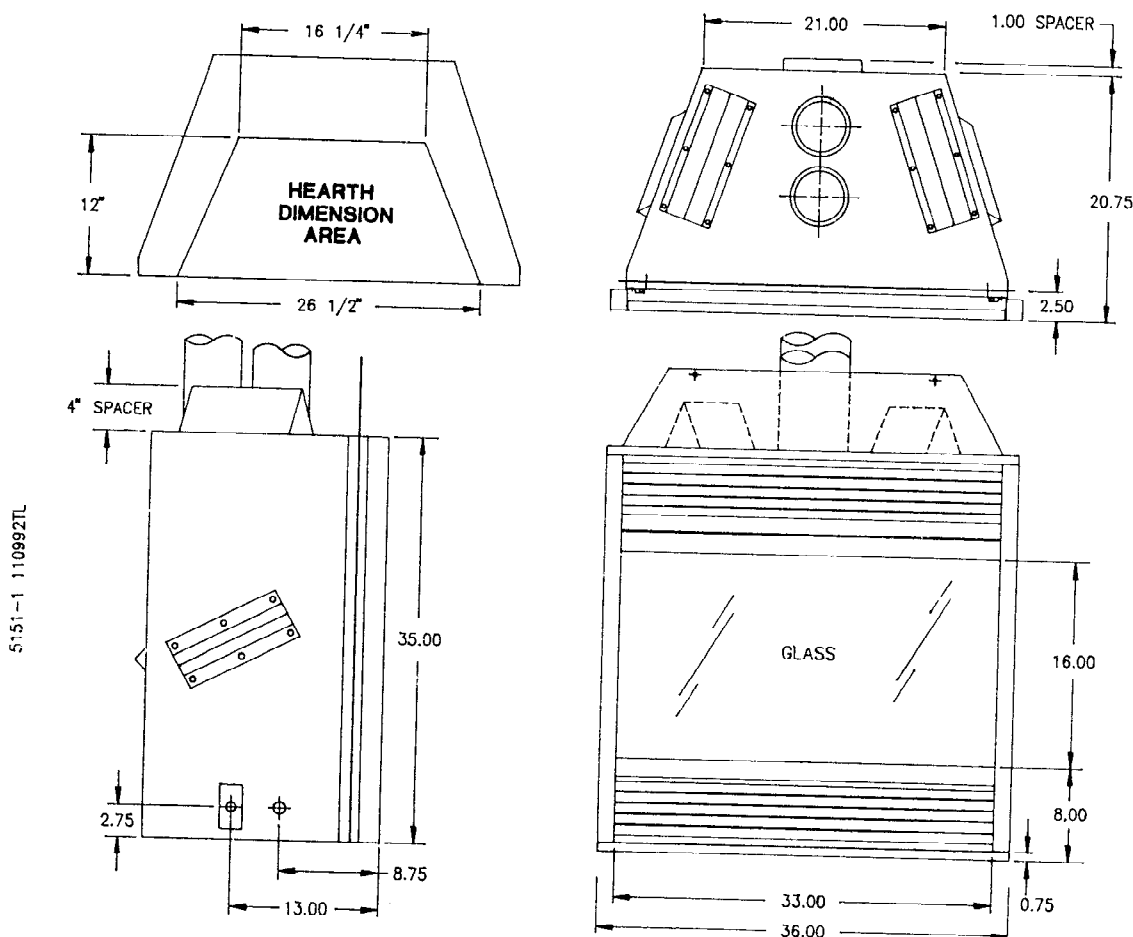


Figure 1

NOTE: ALL DIMENSIONS IN THIS INSTALLATION MANUAL ARE IN INCHES UNLESS OTHERWISE SPECIFIED.

INTRODUCTION

Model TV-2000 series is a heat circulating decorative gas appliance with a sealed combustion chamber that uses an **MILLIVOLT GAS CONTROL VALVE** and a **MILLIVOLT IGNITION SYSTEM**.

The system requires the utilization of a **unique termination** which includes transition pipes.

A **BLOWER** is available for this model as an option. It can be installed at any time.

REMOTE CONTROL is also available for this model as an option. It can be installed at any time.

CHECK WITH YOUR LOCAL BUILDING CODES FOR AREA REQUIREMENTS BEFORE INSTALLING THIS APPLIANCE.

- Model TV-2000 uses **NATURAL GAS ONLY**.
- Model TV-2000P uses **PROPANE GAS ONLY**.

If you have any doubts as to which gas your particular appliance is approved and tested for, please check the **rating plate** mounted on a plate at the interior of the appliance's opening (see **Figure 1**) or consult your local distributor.

BEFORE YOU BEGIN:

Before beginning the installation of your appliance; read these instructions through completely and consult your local building authority. Install the unit and its venting system only as described in these instructions.

This FMI appliance and its' approved components are safe when installed according to this installation manual and are operated as recommended by FMI. Unless you use FMI approved components tested for this appliance, **YOU MAY CAUSE A FIRE HAZARD !**

The FMI warranty will be voided by, and FMI disclaims any responsibility for the following actions :

- Modification of the appliance or any of the components manufactured by FMI unless otherwise permitted by FMI.
- The use of any component part not approved by FMI in combination with this FMI appliance.
- Installation and/or operation in a manner other than instructed in this manual.
- The burning of anything other than the type of gas approved for use in this gas appliance.

This appliance, when installed, must be electrically grounded in accordance with local codes or, in the absence of local codes, with the **National Electrical Code, ANSI/NFPA 70-1990** and the **CSA C22.1 Canadian Electrical Code** for Canada.

The installation must conform to local codes or, in the absence of local codes, with the **National Fuel Gas Code ANSI Z223.1-1988** and with the current **CAN1-B149 Installation Code** for Canada.

This gas fireplace has been tested and certified to use in USA and Canada by Warnock Hersey International according to the following Standards; **ANSI Z21.50b-1990** and portions of **ANSI Z21.44** for the USA, and **CAN-CGA-2.22M9** with Interim requirement #41 for CANADA.

NOTE: Installation and repair should be done by a qualified service person. The appliance should be inspected before use, and at least annually thereafter by a qualified service person. More frequent cleaning may be required due to excessive lint from carpeting, bedding, etc. It is imperative that the control compartments, burners, and circulating air systems be kept clean.

THIS APPLIANCE IS NOT INTENDED TO BE USED AS A PRIMARY SOURCE OF HEAT.

SELECTING LOCATION

To determine the safest and most efficient location for your appliance, consider the following guidelines:

1. The location must allow for all the proper clearances (see section on clearances).
2. Consider a location where the heat output would not be affected by drafts, air conditioning ducts, windows or doors.

Figure 2 shows a plan view of a few common locations.

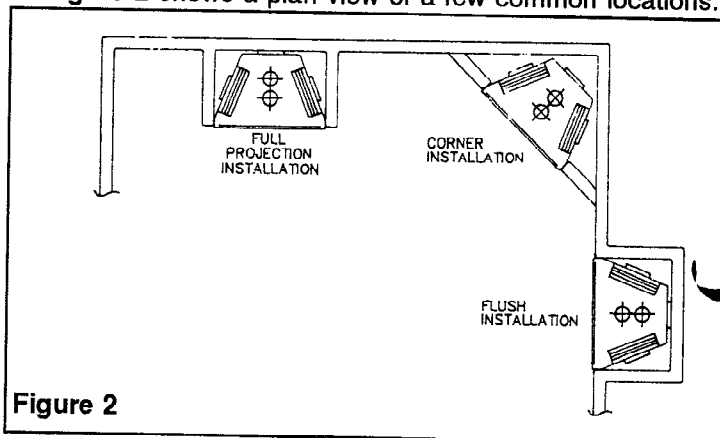


Figure 2

A **flush installation** is recommended where living space is limited or at a premium.

Projected installations can extend any distance into the room. A projection may be ideal for a new addition on an existing, finished wall.

Corner installations make use of space that may not normally be used and provides a wider and more efficient range for radiant heat transference.

NOTE: IN SELECTING A LOCATION, THE FOLLOWING PRECAUTIONS MUST BE OBSERVED;

- Do not connect this appliance to a chimney system used for a solid fuel burning fireplace.
- Install in an area providing ventilation and adequate combustion air for the termination.
- Due to high temperatures, do not locate this appliance in high traffic areas or near furniture or draperies.

4. NEVER obstruct the front opening of the appliance or the flow of combustion and ventilation air. Keep control compartments accessible.

Do not locate close to where gasoline or other flammable liquids may be stored. The appliance area must be kept clear and free from these combustible materials.

CLEARANCES:

MINIMUM CLEARANCES TO COMBUSTIBLES ARE:

- Back and sides of outer surround: 0" min.
- Front Face and Walls: 0" min.
- Ceiling to Opening: 41-1/2" min.
- Floor: 0" min.
- Sidewall (at nailing flanges) 0" min.
- Adjacent Sidewall: 18" min.
- Vent Surfaces top: 3" min.
- Vent Surfaces side: 1-1/2" min.

* **Warning:** Do not enclose horizontal portion of vent system. Maintain clearance and provide opening for air to circulate around vent pipes.

CAUTION : DO NOT BLOCK REQUIRED AIR SPACES WITH INSULATION OR ANY OTHER MATERIAL. DO NOT OBSTRUCT EFFECTIVE OPENING OF APPLIANCE WITH ANY TYPE OF FACING MATERIAL.

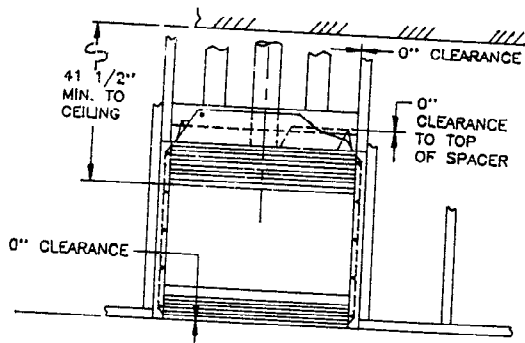


Figure 3

MANTLE CLEARANCES

Woodwork, such as wood trims, mantles, and other combustible materials, should not be placed within 7 inches of the opening on this appliance (Figures 4 & 5). Combustible material above and projecting more than 1 1/2 inches from the appliance's front face must not be placed less than 12 inches from the opening of the appliance (ref. NFPA Standard 211 Sec.7-3.3.3).

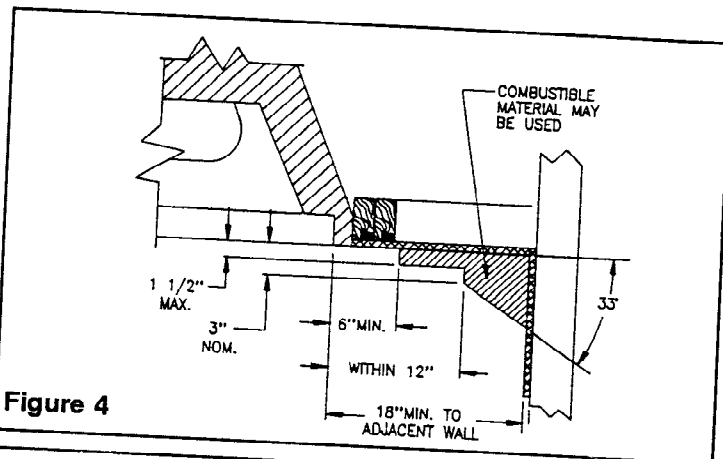


Figure 4

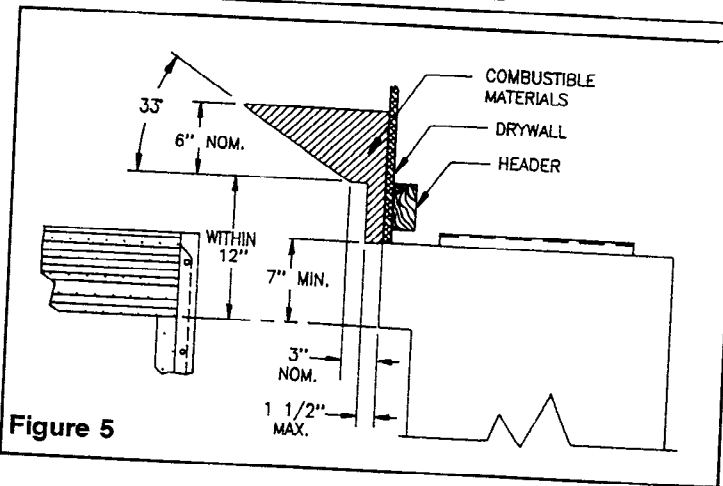


Figure 5

VENT TERMINATION: CLEARANCES & INSTRUCTIONS

The final position of your appliance depends on the location of the vent termination in relation to the clearances that must be observed as shown in figures 6 and 7.

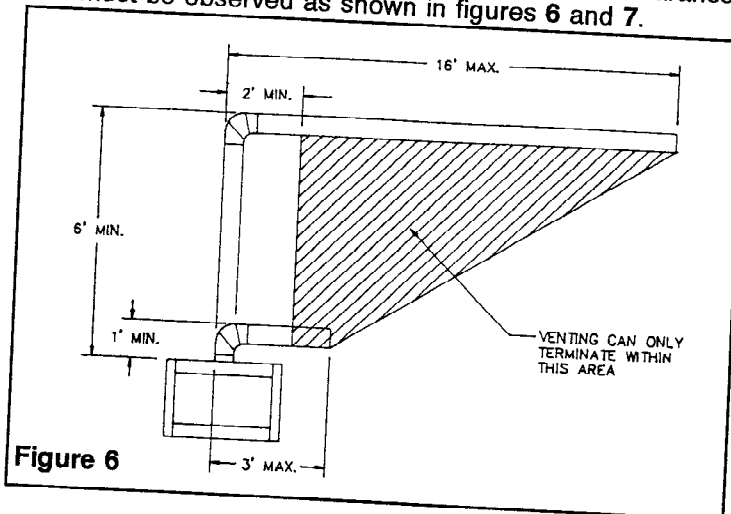
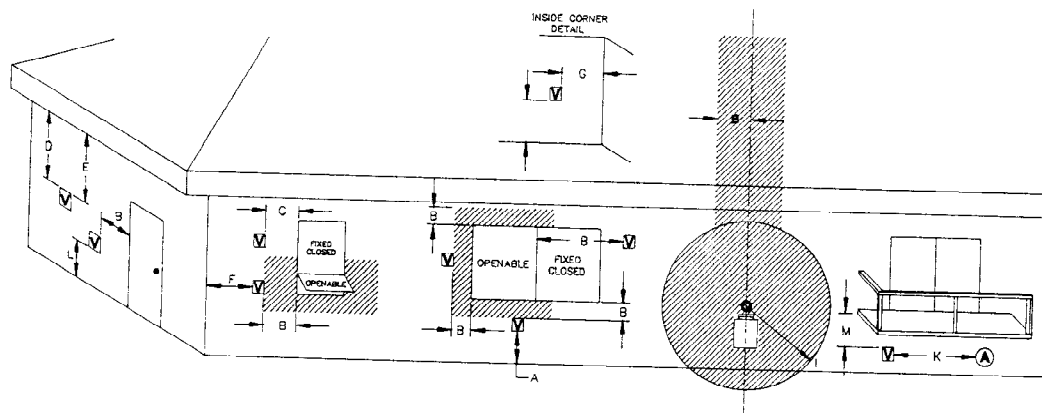


Figure 6

CV 2000



- V = VENT TERMINAL A = AIR SUPPLY INLET [Hatched Area] = AREA WHERE TERMINAL IS NOT PERMITTED
- A = 12" CLEARANCE ABOVE GRADE, VERANDA, PORCH, DECK OR BALCONY
 - B = 12" CLEARANCE TO WINDOW OR DOOR THAT MAY BE OPENED
 - C = 12" CLEARANCE TO PERMANENTLY CLOSED WINDOW
 - D = 18" VERTICAL CLEARANCE TO VENTILATED SOFFIT LOCATED ABOVE THE TERMINAL WITHIN A HORIZONTAL DISTANCE OF 2 FEET (60 CM) FROM THE CENTRE-LINE OF THE TERMINAL
 - E = 12" CLEARANCE BELOW EAVES
 - F = 12" CLEARANCE TO OUTSIDE CORNER
 - G = 12" TO INSIDE CORNER
 - H = * NOT TO BE INSTALLED ABOVE A METER/REGULATOR ASSEMBLY WITHIN 3 FEET (90 CM) HORIZONTALLY FROM THE CENTRE-LINE OF THE REGULATOR
 - I = 72" CLEARANCE TO SERVICE REGULATOR VENT OUTLET
 - J = 12" CLEARANCE TO NON-MECHANICAL AIR SUPPLY INLET TO BUILDING OR THE COMBUSTION AIR INLET TO ANY OTHER APPLIANCE
 - K = 36" CLEARANCE TO A MECHANICAL AIR SUPPLY INLET
 - L = 84" ± CLEARANCE ABOVE PAVED SIDE-WALK OR A PAVED DRIVEWAY LOCATED ON PUBLIC PROPERTY
 - M = 12" CLEARANCE UNDER VERANDA, PORCH, DECK OR BALCONY
- * A VENT SHALL NOT TERMINATE DIRECTLY ABOVE A SIDE-WALK OR PAVED DRIVEWAY WHICH IS LOCATED BETWEEN TWO SINGLE FAMILY DWELLINGS AND SERVICES BOTH DWELLINGS. *
- * ONLY PERMITTED IF VERANDA, PORCH, DECK, OR BALCONY, IS FULLY OPEN ON A MINIMUM OF 2 SIDES BENEATH THE FLOOR. *
- * AS SPECIFIED IN CGA -8149 INSTALLATION CODES (1991) NOTE: LOCAL CODES OR REGULATIONS MAY REQUIRE DIFFERENT CLEARANCES.

Figure 7

Use only pipe that is supplied with the appliance. Maintain minimum clearances or greater. Do not fill air spaces with insulation or other materials.

To connect the flue vent to the flexible duct, follow these steps (refer to **Figure 8**).

1. Slide heat shield on to flexible flue duct.
2. Install flexible duct to the flue vent using self-threading screws and silicon sealant (FMI recommends the use of Dow Corning Hi-Heat sealant model #736-RTV or Rutland Products model #76R) to prevent exhaust leakage.
3. Slide the heat shield over the flue vent/flexible duct connection so that the center of the heat shield is approximately centered on the flue vent. **DO NOT** attach the heat shield to either the air intake duct or the flue duct.

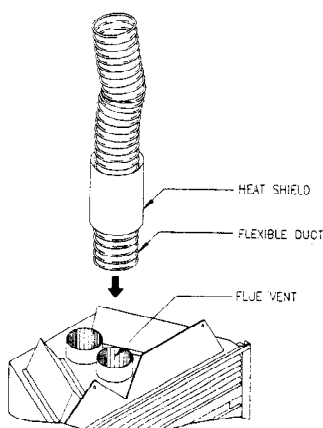


Figure 8

NOTE: Never allow the vent to descend as this may create a fire hazard.

The top vent system serves as the "chimney" as well as the combustion air supply (air intake). The horizontal run must be level or have a rise of 1/4" of every 2' of horizontal run. Horizontal runs of pipe will require one vent support for every 3' of vent. The pipe must protrude 1" from exterior wall minimum. (see **Figure 9**).

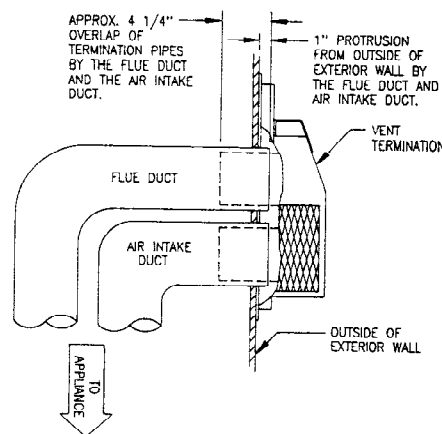


Figure 9

However, the termination may also be constructed vertically. Please see Fig. 10 for requirement. The maximum vertical distance this appliance can be terminated vertically is 40', and must adhere to the specific clearances from combustibles (1-1/2").

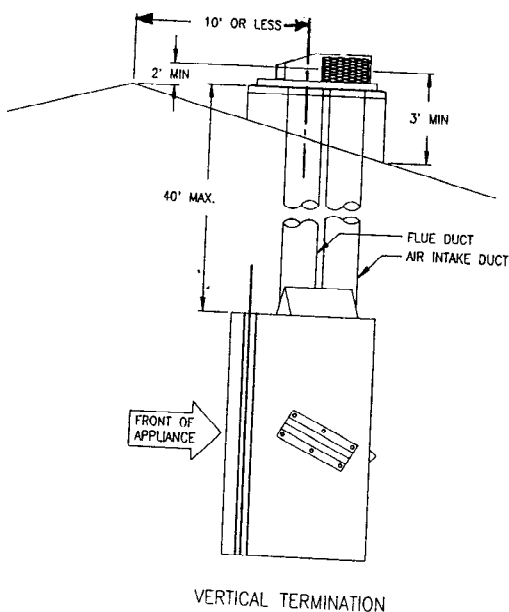


Figure 10

12" x 15" hole in the wall must be located so the pipe will level and perpendicular to the wall. The height of the pipe must be situated to meet all local and national codes and not be easily blocked or obstructed. The termination cannot be within any of the specified distances (see Figure 7) of any opening (door, window, etc) or ground level. When selecting the termination height, follow cutting instructions in the installation guide.

3. Connect the coupler to the longest section of liner first. Align the seams of the coupler and flexible duct section as shown on drawing and twist the coupler to the right to engage corrugations (threads). If difficulty is encountered, check to ensure that seams are lined up, and ensure liner is not badly distorted.
4. Twist coupler on five (5) full turns or until the coupler is approximately half way over the flexible duct section.
5. Connect the shorter piece of duct to the coupler by aligning the seams and twisting the duct until it engages with the coupler. Twist duct section a full five (5) turns or until it stops against first duct section inside coupler. If difficulty is encountered, check to ensure that seams are lined up, and ensure duct is not badly distorted.
6. If the coupler feels loose, kink the coupler slightly to provide added friction to prevent loosening of the two pieces.

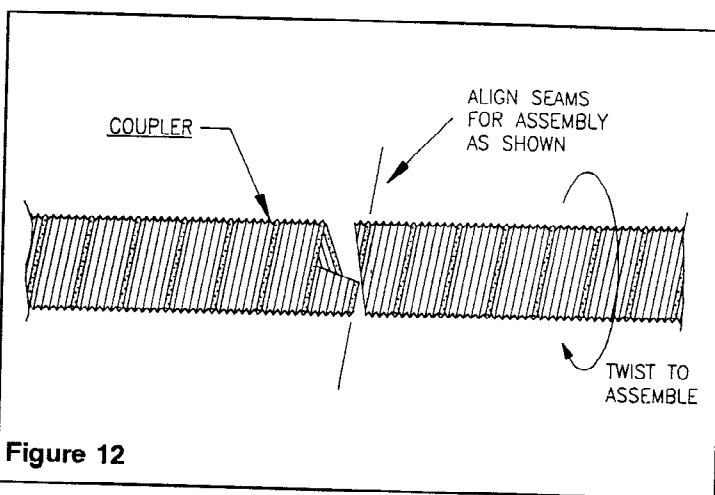


Figure 12

FRAMING

Once the final location has been determined, observing clearances for vent termination, you may construct framing using dimensions shown in figures 13, through 19, depending on your particular installation.

If the appliance is to be installed directly on carpeting, tile (other than ceramic), or any combustible material other than wood flooring; the appliance must be installed upon a metal or wood panel extending the full width and depth of the appliance.

Figure 13 shows that in order to maintain the proper clearances, the header directly above the appliance must be rotated 90 degrees so that the face of the header is flush with that of the side trimmers. Also, the trimmers above the top header must be rotated so that they are flush with the top header. Once the height of the termination has been determined, the headers and trimmers above the appliance may be installed as usual.

The appliance may also be installed so that the front face of the appliance is flush with the framing (see Figure 14). If this is the desired installation method, the two nailing flange on each side as well as the top nailing flange must be installed onto the front face of the appliance (if this is the desired installation method, once the appliance is mounted, the front face **can not** be removed). Using self-threading screws, mount each of the nailing flanges onto the front face.

COUPLER INSTALLATION (OPTIONAL)

Before installation of coupler, ensure the ends of flexible ducts are reasonably round, straight, and that the corrugations are not compressed. If the ends of the flexible ducts are badly distorted, cut off distorted part before assembly with coupler.

and all irregular raw edges inward around the end of the flexible ducts to prevent any hang up when twisting on the coupler.

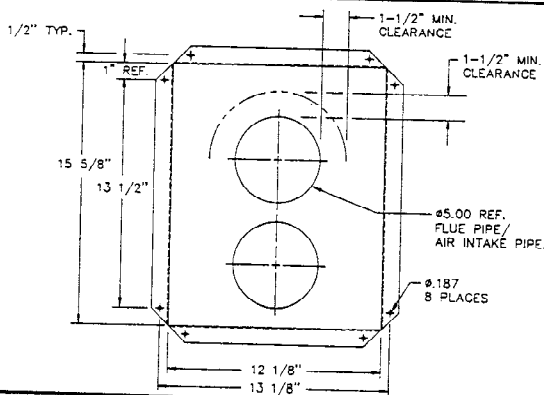
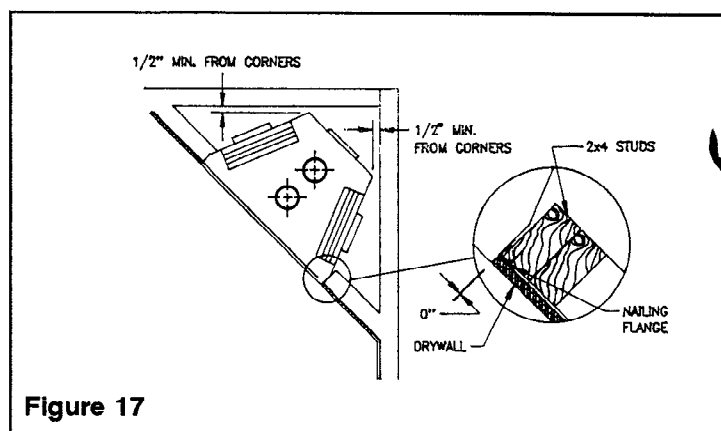
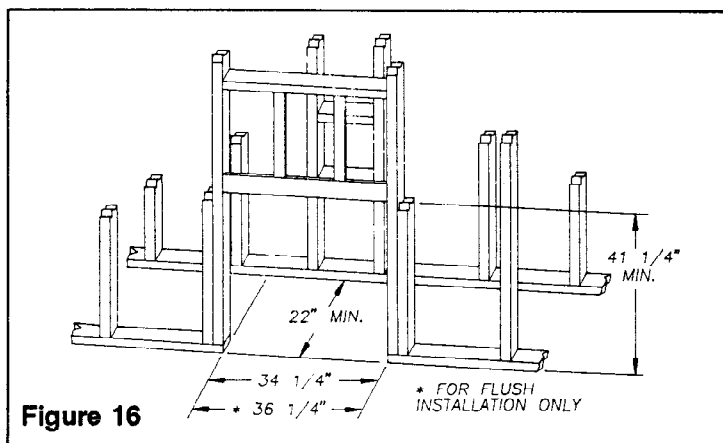
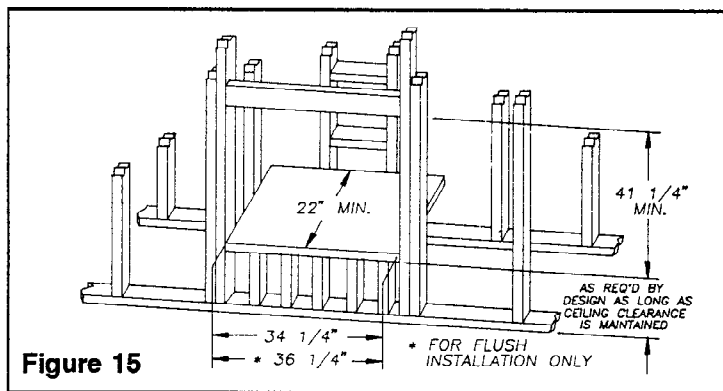
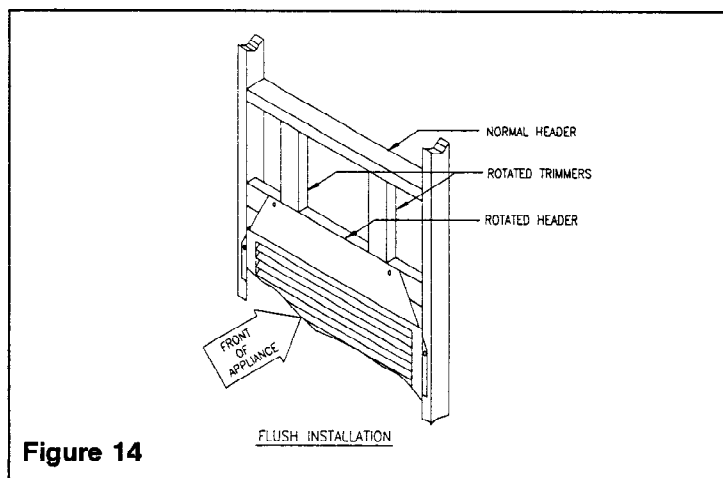
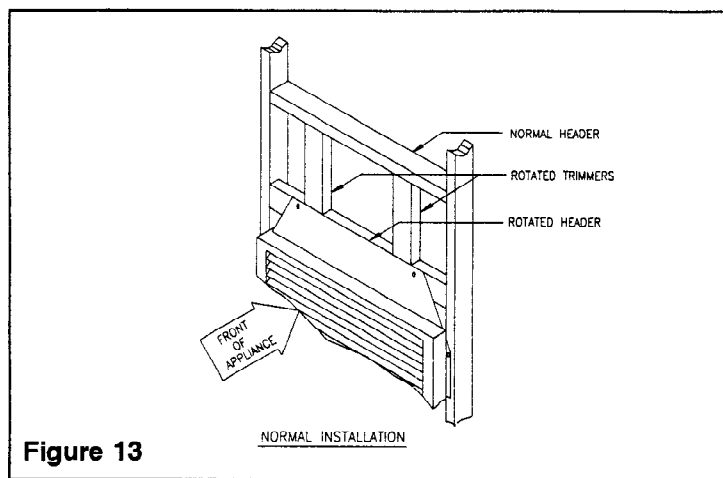
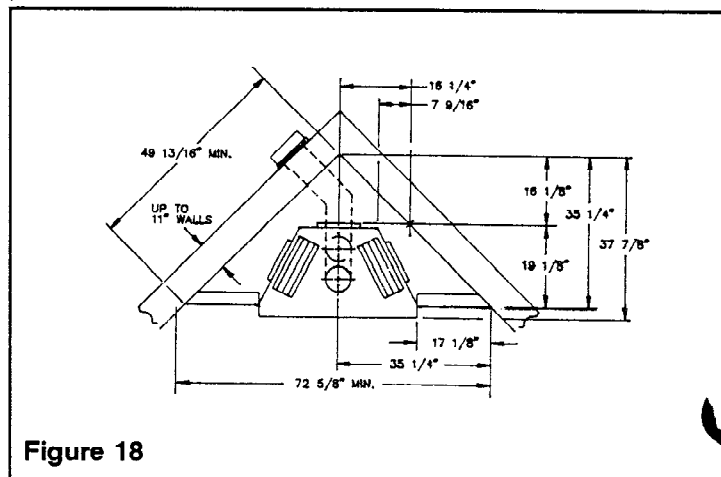


Figure 11

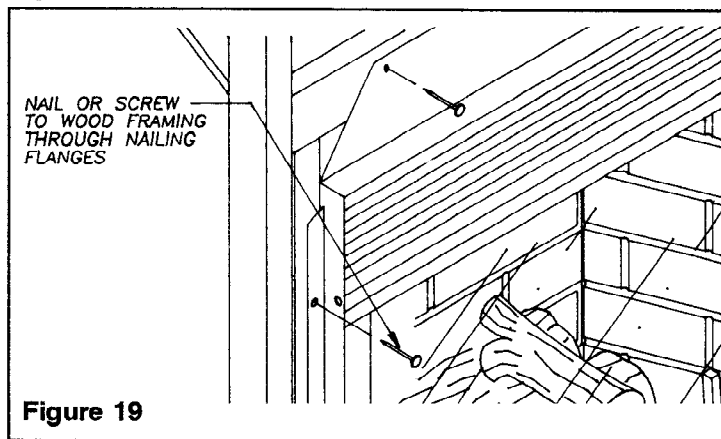
TV2000



When installing onto collars, sufficient overlap must be provided for rigidity of assembly, a minimum of 2 inches is preferable.



Proceed to secure appliance to prepared framing at nailing flanges located at the sides of the appliance as shown in Figure 19.



GAS SUPPLY TESTING

NOTE : This section is intended as a guide for qualified technicians installing gas to this appliance.

NOT CONNECT APPLIANCE BEFORE PRESSURE TESTING GAS PIPING. DAMAGE TO GAS VALVE MAY RESULT AND AN UNSAFE CONDITION MAY BE CAUSED.

The appliance and its individual shut-off valve must be disconnected from the gas supply piping system during any pressure testing of that system at test pressures in excess of 1/2 psig (3.5 kPa).

The appliance must be isolated from the gas supply piping system by closing its individual manual shut-off valve during any pressure testing of the gas supply piping system at test pressures equal to or less than 1/2 psig (3.5 kPa).

GAS RATINGS

TYPE OF GAS:	NATURAL	L.P. (PROPANE)
MAX. INPUT RATING:	20,000 Btu/hr.	20,000 Btu/hr.
MANIFOLD PRESSURE:	3.75 in.WC (.933 kPa)	11.0 in.WC (2.74 kPa)
† MIN. SUPPLY PRESSURE:	5.50 in.WC (1.37 kPa)	12.0 in.WC (2.99 kPa)

For the purpose of input adjustment.

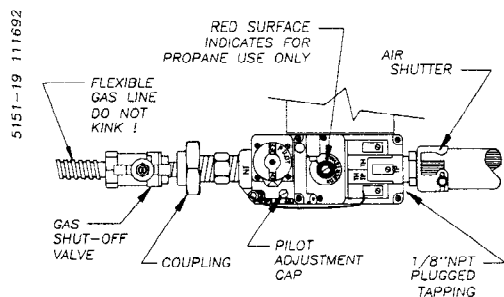


Figure 20

The gas control valve is secured to the fire box bottom underneath the front ledge. One (1) 1/8" NPT plugged tapping is provided on the Gas Control Valve for a test gauge connection located underneath the valve itself (see Figure 20).

GAS LINE HOOK-UP

GAS LINE HOOK-UP SHOULD BE DONE BY YOUR GAS SUPPLIER OR A QUALIFIED SERVICE PERSON.

NOTE : BEFORE YOU PROCEED, MAKE SURE YOUR GAS SUPPLY IS OFF!!

A **MANUAL SHUT-OFF VALVE** has been included in the appliance's gas supply system although you may consider installing an extra gas shut-off valve outside the appliance's enclosure (check with local codes) where it can be accessed more conveniently with a key through a wall as shown in Figure 21.

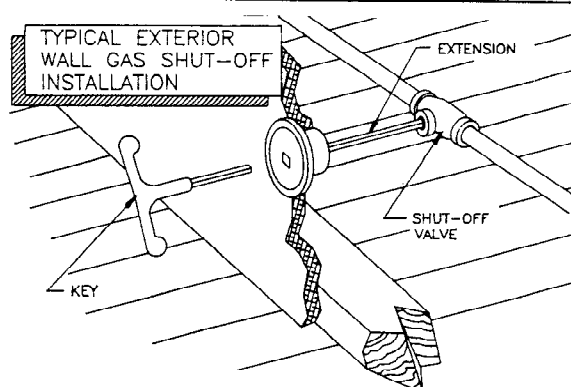


Figure 21

Route a 1/2" NPT **BLACK IRON GAS LINE** towards the appliance coming in from the left (see Figure 22).

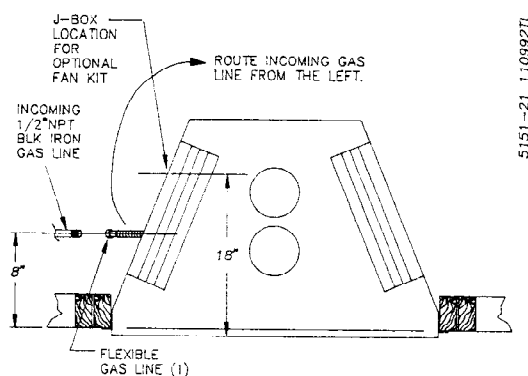


Figure 22

Install a **sediment trap** between the incoming gas line and the gas control valve (see Figure 23). The sediment trap should extend down a minimum of **3 inches** beyond the center of the pipe.

When routing gas line through opening, use insulation to fill gaps between gas line and the opening, to reduce cold air coming in from the installation.

Prepare incoming gas line with **teflon tape** or **pipe joint compound**, (FMI recommends the use of Dow Corning Hi-Heat Sealant #736-RTV or Rutland Products Hi-Heat RTV Sealant #76r). Check with local building codes in regards to the use of teflon tape and pipe joint compound.

Compounds used on threaded joints of gas piping shall be resistant to the action of propane or natural gas, and should be applied lightly to ensure excess sealant does not enter the gas line.

Complete your gas installation by connecting incoming gas line through the sediment trap and into the appliance using either

Complete your gas installation by connecting incoming gas line through the sediment trap and into the appliance using either a solid iron or flexible gas line. Secure tightly with wrench, but do not over-tighten (see **Figure 23** and **24**).

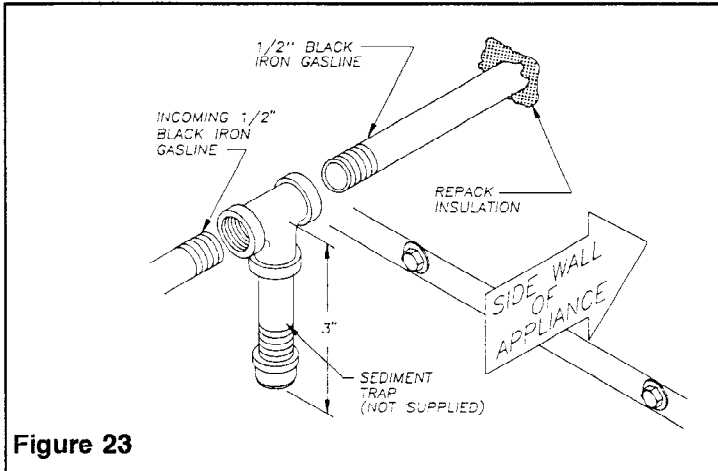


Figure 23

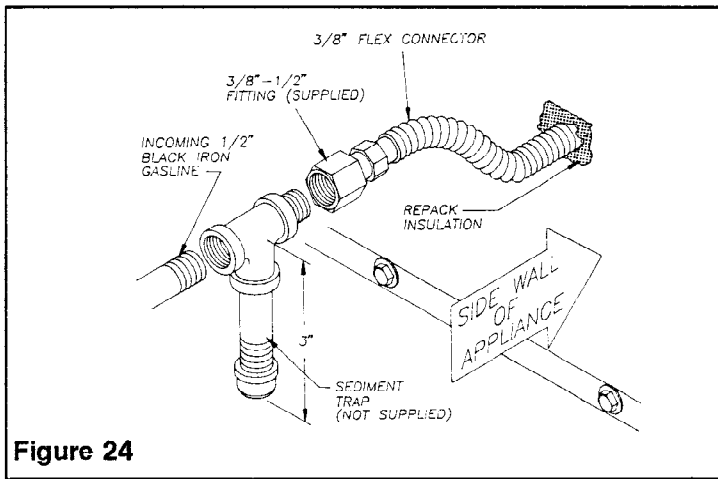


Figure 24

CAUTION: All gas piping and connections must be tested for leaks after the installation is completed. After ensuring that the gas valve is on, apply a soap and water solution to all connections and joints. If bubbles appear, leaks can be detected and corrected. **DO NOT USE AN OPEN FLAME FOR LEAK TESTING AND DO NOT OPERATE ANY APPLIANCE IF A LEAK IS DETECTED.**

WALL SWITCH INSTALLATION

The installation of a wall switch allows you to activate the millivolt gas control valve **without the use of normal current.**

CAUTION: DO NOT CONNECT THIS MILLIVOLT SYSTEM WALL SWITCH TO A REGULAR 120V POWER SOURCE!!

1. Remove the **J-BOX COVER PLATE** located on the left hand side of the appliances outer surround.
2. Using the **18ga. MILLIVOLT WIRE** and **WALL SWITCH** supplied with the appliance, connect per **Figure 25**.

NOTE: If any of the original wire as supplied must be replaced, use **Thermostat Millivolt Wire 18 AWG TYPE CL2-105** or equivalent (25 ft MAXIMUM length, 10' are supplied initially with the appliance).

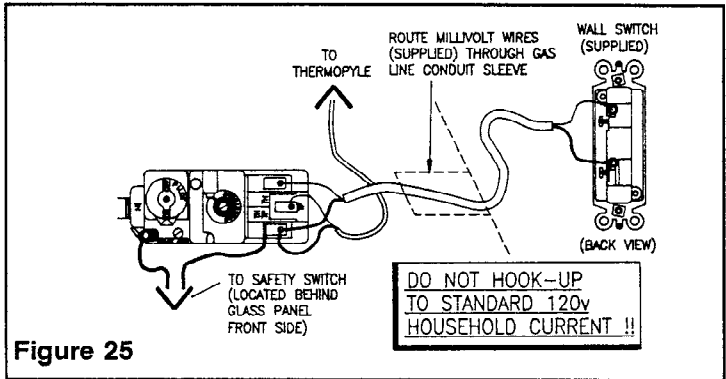


Figure 25

GLASS PANEL REMOVAL & LOG SET INSTALLATION

DO NOT ATTEMPT TO REMOVE THE GLASS WHILE IT IS HOT!!

Before proceeding, make sure **gas control valve** is in the "OFF" position. Logs have been shipped separately to prevent damage to the glass or refractory.

1. To open louvers, pull on the upper middle section of the bottom louver and the top louver.
2. To remove louvers, carefully place one hand behind and one in front of upper louvered panel near one corner and pull lower section outward from behind until corner is free from retainers (see **Figure 26**). Do the same for the remaining corner and swing out until sides are free from retainers, then remove. Repeat steps for lower louver.
3. Remove two (2) removable center braces, located in front of and directly above and below the glass panel, by pulling **gently** on the outside edges. Remove four (4) nuts located in the corners of the glass panel assembly (see **Figure 27**).
4. Carefully pull glass panel assembly straight out until assembly is free from safety switch arm (located in the middle of the appliance above the lower louver). Tilt glass assembly outward while sustaining glass panel in place. Place assembly face down on a smooth surface to avoid scratching.
5. Next remove the 'ceramic fiber embers' from their bag and place small pieces of the material in the top of the rock. Carefully place log set as shown in **Figure 28**. Be careful not to alter the thermopile settings.

CAUTION: THE LOGS CAN GET VERY HOT - HANDLE ONLY WHEN COOL!!

7. Replace glass panel assembly making sure arm on safety switch is fully depressed. Replace panel in reverse order of steps 1 to 4. Tighten all screws to ensure a tight seal.

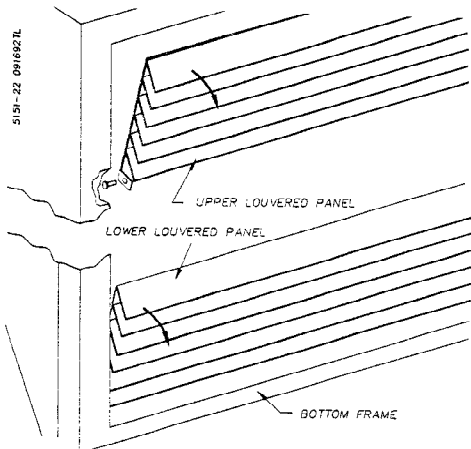


Figure 26

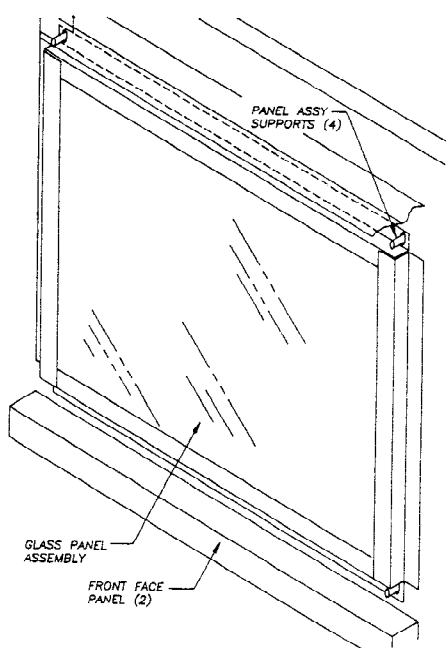


Figure 27

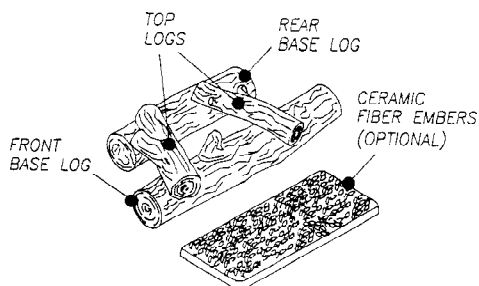


Figure 28

PILOT ASSEMBLY ADJUSTMENTS

The pilot assembly is **factory preset** for the proper flame height. Alterations to these settings may have occurred during shipping and handling, if this is the case, some minor readjustments may be necessary and **SHOULD BE DONE BY A QUALIFIED TECHNICIAN.**

To access the pilot assembly, glass panel must be removed (see section on "Glass Panel Removal..").

The proper settings for the **thermopile** height should be at a distance of $\frac{3}{8}$ " to $\frac{1}{2}$ " from the pilot flame as shown in Fig. 29.

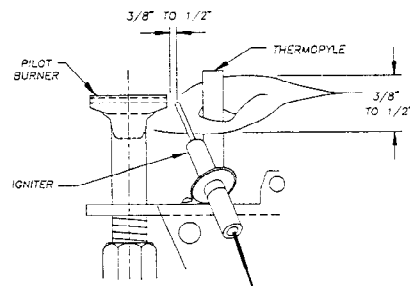


Figure 29

BURNER FLAME ADJUSTMENT

The **air shutter**, located at the base of the **main burner** has been factory preset to the proper **air-to-gas** ratio which results in a long, blue, clean flame (see Figure 30).

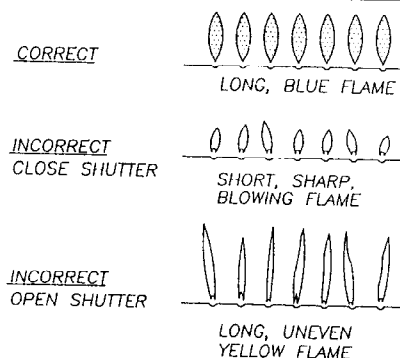


Figure 30

If readjustment is necessary, you can restore the proper flame setting by loosening the air shutter screw and rotating the air shutter until proper flame setting is achieved. Do not forget to tighten screw back (see Figure 31).

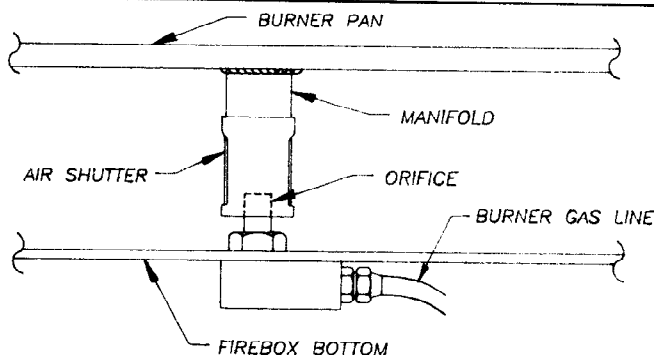


Figure 31
MANIFOLD/ORIFICE CONNECTION

DECORATIVE FACING

Any **non-combustible material** may be use for facing (glass, tile brick, etc.) as long as the proper clearances are observed (refer to section on clearances). Louvered openings must not be obstructed and upper and lower louvers must remain removable for servicing.

Use only heat-resistant, non-combustible mortar or adhesive when securing facing material to appliance's face.

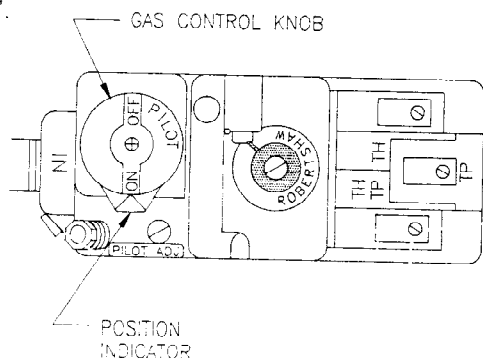
FOR YOUR SAFETY READ BEFORE LIGHTING

WARNING: If you do not follow these instructions exactly, a fire or explosion may result causing property damage, personal injury or loss of life.

- A. This appliance has a pilot which must be lighted by hand. When lighting the pilot, follow these instructions exactly.
 - If you cannot reach your gas supplier, call the fire department.
 - B. BEFORE LIGHTING smell all around the appliance area for gas. Be sure to smell next to the floor because some gas is heavier than air and will settle on the floor.
- WHAT TO DO IF YOU SMELL GAS**
- Do not try to light any appliance.
 - Do not touch any electric switch; do not use any phone in your building.
 - Immediately call your gas supplier from a neighbor's phone. Follow the supplier's instructions.
- C. Use only your hand to push in or turn knob. Never use tools. If the knob will not push in or turn by hand, don't try to repair it; call a qualified service technician. Force or attempted repair may result in a fire or explosion.
 - D. Do not use this appliance if any part has been under water. Immediately call a qualified service technician to inspect the appliance and to replace any part of the control system and any gas control which has been under water.

LIGHTING INSTRUCTIONS

1. STOP! Read the safety information above on this label.
2. Turn wall switch to the "OFF" position.
3. Turn off all electric power to the appliance.
4. Remove control access panel.
5. Turn gas control knob clockwise to "OFF".



6. Wait five (5) minutes to clear out any gas. If you then smell gas, STOP! Follow "B" in the safety information above on this label. If you don't smell gas, go to next step.

7. Find pilot-follow metal tube from gas control. The pilot is behind the burner tube.

8. Turn knob on control counterclockwise to "PILOT".
9. Push in the knob all the way and hold in. Immediately light the pilot by pressing the red ignitor button. Continue to hold the control knob in for about (1) minute after the pilot is lit. Release button and it will pop back up. Pilot should remain lit. If it goes out, repeat steps 5 through 9.
 - If button does not pop up when released, stop and immediately call your service technician or gas supplier.
 - If the pilot will not stay lit after several tries, turn the gas control knob to "OFF" and call your service technician or gas supplier.
10. Turn gas control knob counterclockwise to "ON". Knob can be turned to "ON" only if the control knob is popped out.
11. Replace control access panel.
12. Turn on all electric power to the appliance.

TO TURN OFF GAS TO APPLIANCE

1. Turn off the wall switch.
2. Turn off all electric power to the appliance if service is to be performed.
3. Remove control access panel.
4. Turn gas control clockwise to "OFF". Do not force.
5. Replace control access panel.

MAINTENANCE INSTRUCTIONS

- When lit for the first time, the appliance will emit a slight odor for about an hour. This is a normal occurrence which is due to the "curing" of the logs and "burn-in" or internal paints and lubricants used in the manufacturing process.

- Keep control compartment, logs, burners, and area surrounding the logs clean by vacuuming or brushing at least twice a year. Temporary removal of the logs set may ease the cleaning of the burner and pilot assembly. In cleaning, take care not to alter the settings on the pilot assembly.

- Each time the appliance is lit, it may cause condensation and fog the glass. This condensation and fog will disappear in a few moments.

IMPORTANT

Turn off gas and wall switch before servicing appliance. Any safety screen or guard removed for servicing this appliance must be replaced prior to re-lighting.

Clothing and other flammable material should not be placed on or near the appliance. Never obstruct the flow of combustible and ventilation air. Keep the front of the appliance clear of all obstacles and materials.

WARNING:

CHILDREN AND ADULTS SHOULD BE ALERTED TO THE HAZARDS OF HIGH SURFACE TEMPERATURES AND TO STAY AWAY FROM THESE TO AVOID BURNS OR CLOTHING IGNITION. YOUNG CHILDREN SHOULD BE CAREFULLY SUPERVISED WHEN THEY ARE IN THE SAME ROOM AS THE APPLIANCE.

Have a qualified agency periodically inspect the vent system at the start of each heating season, so as to be free from any obstructions which may hinder its' normal operation. Never obstruct the flow of combustion and ventilation air; keep the front of the appliance clear of all obstacles and combustible materials such as gasoline or other flammable vapors or liquids. It is also imperative that the control compartments, burners and circulating air passageways of the appliance be kept clean.

REPLACEMENT PARTS AND ACCESSORIES

Log Set: Front, rear, and top logs come standard with all units.

Pilot Assembly: If in need of replacing, have a qualified installer replace it. The pilot assembly comes with **thermopyle, pilot burner and orifice.**

Gas Control Valve: If in need of replacing, have a qualified installer replace it and refer to the wiring diagram on the last page of this installation manual.

Wall Switch: The wall switch, cover plate, and wires come standard with this appliance.

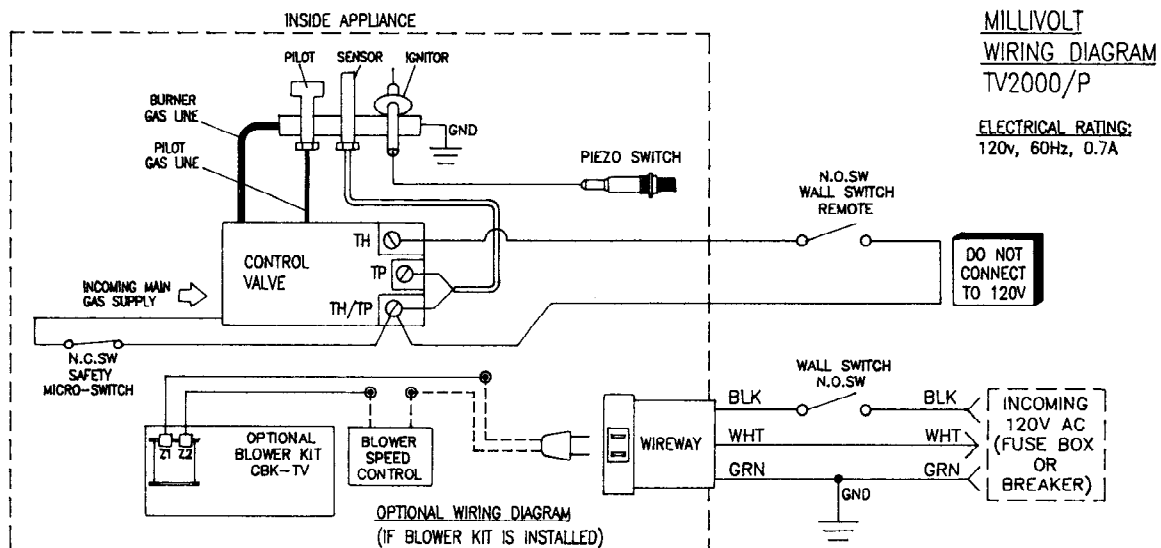
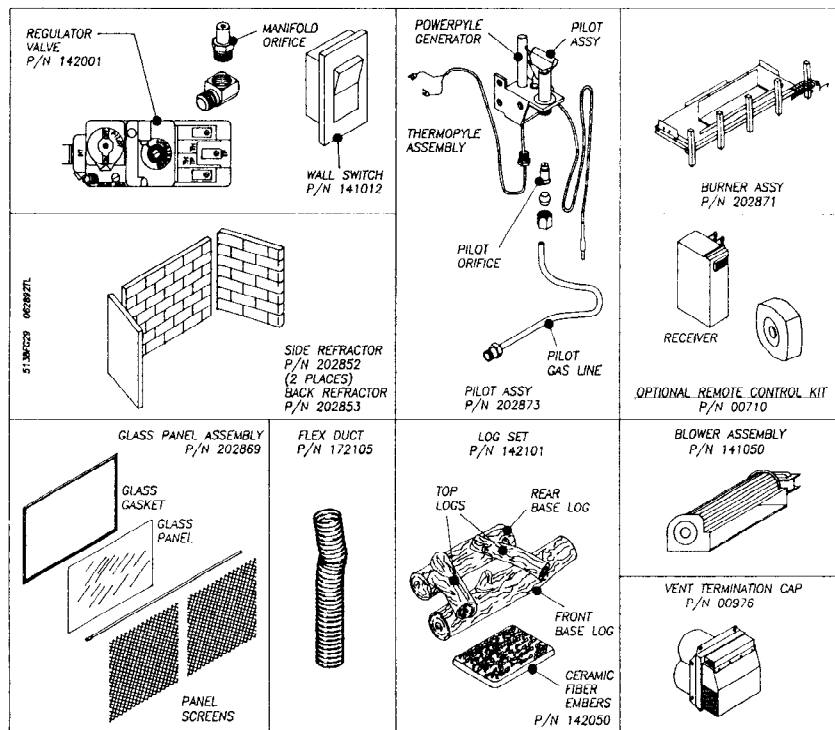
Blower Kit: The blower is optional and may be installed at any time. More explicit details and instructions are included with the blower itself.

Remote Control Kit: A remote control kit is available as an option and can be installed at any time. The remote control you to turn the appliance on without the use of a wall switch but is not intended for the operation of the blower.

Chimney Coupler: Connects two separate pieces of flexible ducts.

Ceramic Fiber Embers: Will provide a warm red glow and 'licks' of flame when operating the gas log set.

- * When ordering replacement or accessory items, please have your appliance's model name/number ready.
- * The model name/number may be found on the rating plate found inside the appliance (see Figure 1).
- * Refer to the parts list and diagrams when ordering replacement parts for your appliance.
- * Repair parts or accessory items may be bought from your distributor/dealer or directly from FMI.
- * All product specifications are subject to change without notice.



TROUBLESHOOTING GUIDE

FOR TV-2000/P VENTED DECORATIVE GAS APPLIANCE

THE TWO MOST COMMON CAUSES OF A MALFUNCTIONING GAS APPLIANCE ARE:

- 1. LOOSE WIRING CONNECTIONS.**
- 2. CONSTRUCTION DEBRIS CLOGGING THE PILOT AND/OR GAS CONTROL VALVE FILTER.**

NOTE : BEFORE TROUBLESHOOTING THE SYSTEM, MAKE SURE THE GAS SHUT-OFF VALVE IS ON.

PROBLEM		POSSIBLE CAUSE		CORRECTIVE ACTION	
1.	Cannot light pilot.	1a.	No gas supply, or shut-off valve is OFF.	A.	Check to see if you have gas supply.
		1b.	Air in gas line.	B.	Hold regulator control valve in the "PILOT" position for 3 to 4 minutes to purge air.
		1c.	Construction debris clogging pilot orifice.	C.	Remove debris and dirt; inspect and clean any other possible obstructions.
		1d.	Low gas pressure.	D.	Contact your gas supplier.
		1e.	Control valve knob is not in the "ON" position.	E.	Refer to section on pilot lighting.
		1f.	Kinked pilot line.	F.	Have a qualified technician replace pilot line.
		1g.	Bad valve.	G.	Replace regulator valve (refer to replacement parts list).
2.	Pilot will not stay lit.	2a.	Loose wiring on thermopyle to regulator valve - no millivolt current is being sent back to regulator.	A.	Check wiring connections, refer to wiring diagram shown in this instruction manual.
		2b.	If valve knob is in the "ON" position and wall switch is on - probable defective regulator valve.	B.	Have a qualified technician replace valve.
3.	No gas to burner although wall switch and valve are set to the "ON" position.	3a.	Wall switch wires defective.	A.	Check electrical connections.
		3b.	Pilot not generating sufficient millivoltage.	B.	Re-check problem #2.
4.	Frequent pilot outage.	4a.	Pilot flame may be too low causing safety pilot to "drop out".	A.	Clean and adjust pilot flame for maximum flame impingement on pilot generator (sensor).
5.	Pilot goes out when wall switch is ON.	5a.	Millivolt output on thermopile too high.	A.	Replace thermopyle.

FIREPLACE MANUFACTURERS, INC.
DECORATIVE GAS APPLIANCE
LIMITED TWO YEAR WARRANTY

THE WARRANTY

Fireplace Manufacturers, Inc. (hereafter referred to as FMI), warrants the FMI Decorative Gas Appliance to be free from defects in materials and workmanship at the time of manufacture.

REMEDY AND EXCLUSIONS

The coverage of this Warranty is limited to all components of the decorative gas appliance manufactured by FMI, with the exception of glass doors (or panels) and refractory. The **glass door is warranted for 90 days**. There will be no cost for replacement of glass panels within 90 days of installation, provided that breakage is due to heat from the appliance. We do not warranty breakage occurring during installation or transportation.

REFRACTORY

FMI warrants the refractory for **one year** from date of manufacture (except for hairline cracks less than 1/16" in width) to be free from defect in material and workmanship. If the original owner of an FMI appliance believes that any of the refractory parts have failed during the one year period, he should notify the nearest (FMI) distributor or dealer. FMI will pay for the refractory replacement and reasonable labor charges. FMI will be responsible for the freight charges. For the **second year**, FMI will supply refractory replacement parts at the current list price that is in effect at the time of replacement. FMI will assume no responsibility for any labor or freight charges incurred.

If the decorative gas appliance covered by this Warranty is found to be defective within one year from the date of installation, FMI will, at its option, replace or repair defective components of the decorative gas appliance manufactured by FMI at no charge, or will pay for reasonable costs incurred in replacing or repairing such components. These charges should be pre-approved by FMI before any work can be done. During the second year of the Warranty, FMI shall supply replacement parts, if readily available, at the current minimum wholesale price. FMI will not be responsible for any other expense.

This Warranty covers only parts and labor as provided above. In no case shall FMI be responsible for materials, components, or construction which are not manufactured or supplied by FMI. FMI will not be responsible for any labor charges to remove such materials, components, or construction. All replacement parts will be shipped F.O.B., Santa Ana, to purchasers' address or the nearest FMI distributor.

QUALIFICATIONS TO THE WARRANTY

The decorative gas appliance Warranty outline above is further subject to the following qualifications:

1. The limited Warranty will not be effective until FMI receives the fully completed Warranty Registration card within 30 days of installation.
2. The decorative gas appliance must be installed as per the FMI installation instructions provided and local building codes. The use of components manufactured by others with this FMI decorative gas appliance (except for listed Type B venting system as outlined in the installation instructions) could create serious safety hazards, may result in denial of certification by recognized national safety agencies, and could be in violation of local building codes. This Warranty does not cover any damages occurring from the use of any components not manufactured or supplied by FMI.
3. THE FMI APPLIANCE MUST BE SUBJECTED TO NORMAL USE. THE DECORATIVE GAS APPLIANCES ARE DESIGNED TO BURN EITHER NATURAL OR PROPANE GAS ONLY. BURNING CONVENTIONAL FIREPLACE FUELS SUCH AS WOOD, COAL, OR ANY OTHER SOLID FUEL WILL CAUSE DAMAGE TO THE DECORATIVE GAS APPLIANCE, WILL PRODUCE EXCESSIVE TEMPERATURES, AND WILL RESULT IN A FIRE HAZARD.

LIMITATION OF LIABILITY

It is expressly understood that FMI's sole obligation and purchaser's exclusive remedy under this Warranty, expressed or implied, or in contract, tort, or otherwise, shall be limited to replacement or repair as specified above. In no event shall FMI be responsible for any incidental or consequential damages caused by defects in its products, whether such damage occurs or is discovered before or after replacement or repair, and whether or not such damage is caused by FMI's negligence. Some States do not allow the exclusion or limitation of incidental or consequential damages, so the above limitation or exclusion may not apply to you. The duration of any implied warranty with respect to this FMI decorative gas appliance is limited to the duration of the foregoing Warranty.

INVESTIGATION OF CLAIMS AGAINST WARRANTY

FMI reserves the right to investigate any and all claims against this Warranty and to decide upon method of settlement.

FMI IS NOT RESPONSIBLE FOR WORK DONE WITHOUT WRITTEN CONSENT

FMI shall in no event be responsible for any warranty work done without first obtaining FMI's written consent.

HOW TO REGISTER A CLAIM AGAINST WARRANTY

An FMI dealer or distributor should be contacted directly by the owner for any service, including service under these warranties. The repair and replacement of any defective part covered by these warranties is the responsibility of the nearest FMI dealer or distributor.

OTHER RIGHTS

This Warranty gives you specific rights, and you may also have other rights which vary from State to State.

THESE WARRANTIES ARE GIVEN IN LIEU OF ANY OTHER EXPRESSED WARRANTIES. FIREPLACE MANUFACTURERS, INC. (FMI) DOES NOT AUTHORIZE ANY PERSON OR REPRESENTATIVE TO MAKE REPRESENTATIONS TO THE CONTRARY IN CONNECTION WITH THE SALE OF A DECORATIVE GAS APPLIANCE.