



PROPANE CONSTRUCTION HEATER

USER'S MANUAL AND OPERATING INSTRUCTIONS

THERMOHEAT MODELS:

RMC-FA50/C/L
RMC-FA60/L/L-01
RMC-FA100/C/L
RMC-FA125/L/L-01

(30,000/50,000 BTU/HR, FORCED - AIR)
(30,000/60,000 BTU/HR, FORCED - AIR)
(70,000/100,000 BTU/HR, FORCED - AIR)
(70,000/125,000 BTU/HR, FORCED - AIR)



C US
CSA 2.14a-2007, ANSI Z83.7a-2007



GHP Group, Inc.
8280 Austin Ave.
Morton Grove, IL 60053-3207



GENERAL HAZARD WARNING

FAILURE TO COMPLY WITH THE PRECAUTIONS AND INSTRUCTIONS PROVIDED WITH THIS HEATER, CAN RESULT IN DEATH, SERIOUS BODILY INJURY AND PROPERTY LOSS, OR DAMAGE FROM THE HAZARDS OF FIRE, EXPLOSION, BURN, ASPHYXIATION, CARBON MONOXIDE POISONING, AND/OR ELECTRICAL SHOCK.

ONLY PERSONS WHO CAN UNDERSTAND AND FOLLOW THE INSTRUCTIONS SHOULD USE OR SERVICE THIS HEATER.

IF YOU NEED ASSISTANCE OR HEATER INFORMATION SUCH AS AN INSTRUCTION MANUAL, LABELS, ETCETERA, CONTACT THE MANUFACTURER.

CONSUMER: Retain this manual for future reference.

Questions, problems, missing parts? Before returning to your retailer, call our customer service department at 877-447-4768 8:30 a.m. – 4:30 pm CST, Monday – Friday
or email us at customerservice@ghpgroupinc.com
www.ghpgroupinc.com


[illegible][illegible]

PROPANE CONSTRUCTION HEATER



TABLE OF CONTENTS

| | |
|---|---------|
| Introduction & Specifications | 3 |
| • General Safety Instructions | 4 |
| • Product Features | 4 |
| • Unpacking Heater | 5-6 |
| • Size & Capacity Of Propane Cylinders | 7 |
| • Installation To The Propane Gas Tank | 8 |
| • Refilling The Propane Gas Tank | 8 |
| • Leak Checking & Positioning Heater | 9 |
| • Lighting & Shutdown Instructions | 9 - 10 |
| • Test Firing Heater & Storage | 10 |
| • Troubleshooting | 10 |
| • Wiring Diagrams | 11 - 12 |
| • Replacement Parts List | 13 - 15 |
| PROPANE CONSTRUCTION HEATER ILLUSTRATED / PARTS BREAKDOWN : | |
| RMC-FA50/C/L / RMC-FA60/L/L-01 / RMC-FA100/C/L / RMC-FA125/L/L-01 | 14 |
| RMC-FA100//L / RMC-FA125/L/L-01 | 16 |
| • Warranty | 18 |

 **WARNING:** FIRE, BURN, INHALATION, AND EXPLOSION HAZARD, KEEP SOLID COMBUSTIBLES, SUCH AS BUILDING MATERIALS, PAPER OR CARDBOARD, A SAFE DISTANCE AWAY FROM THE HEATER AS RECOMMENDED BY THE INSTRUCTIONS. NEVER USE THE HEATER IN SPACES WHICH DO OR MAY CONTAIN VOLATILE OR AIRBORNE COMBUSTIBLES, OR PRODUCTS SUCH AS GASOLINE, SOLVENTS, PAINT THINNERS, DUST PARTICLES OR UNKNOWN CHEMICALS.

CALIFORNIA PROPOSITION 65 WARNING: This product contains chemicals, including lead and lead compounds, a chemical known to the state of California to cause birth defects or other reproductive harm. ***Wash hands after handling.***



WARNING: NOT FOR HOME OR RECREATIONAL VEHICLE USE.



GHP Group, Inc.
8280 Austin Ave., Morton Grove, IL 60053-3207
Tel: (877) 447-4768 Web: www.ghpgroupinc.com



PROPANE CONSTRUCTION HEATER

DYNA-GLO PROPANE FORCED AIR CONSTRUCTION HEATERS

The heater is designed and approved for use as a construction heater under ANSI Z83.7a, CSA 2.14a. It is hard to anticipate every use which may be made of this heater. **CHECK WITH YOUR LOCAL FIRE SAFETY AUTHORITY IF YOU HAVE QUESTIONS ABOUT APPLICATIONS.**

Other standards govern the use of fuel gases and heat producing products in specific applications. Your local authority can advise you about these.

IMPORTANT: READ THIS USER'S MANUAL CAREFULLY AND COMPLETELY BEFORE TRYING TO OPERATE OR SERVICE THIS HEATER. IMPROPER USE OF THIS HEATER CAN CAUSE SERIOUS INJURY OR DEATH FROM FIRE, EXPLOSION AND CARBON MONOXIDE POISONING.

This is a direct-fired forced air construction heater for either indoor construction or outdoor use. Its intended use is primarily the temporary heating of buildings or structures under construction, alteration or repair. All the products of combustion generated by the heater are forced through the heater and released into the area being heated. This heater operates at approximately 98%+ combustion efficiency but still produces a small amount of carbon monoxide. Humans can tolerate small amounts of carbon monoxide for short periods. Carbon monoxide can build up in a heated space and failure to provide adequate ventilation could result in poisoning or death.

!WARNING: NOT FOR USE WITH DUCT WORK.

SPECIFICATIONS

| Model No. | | RMC-FA50/C/L | RMC-FA60/L/L-01 | RMC-FA100/C/L | RMC-FA125/L/L-01 |
|---|-------------|-------------------------------------|-------------------------------------|--|--|
| Input Rating | | 30,000 BTU/hr 50,000 BTU/hr | 30,000 BTU/hr 60,000 BTU/hr | 70,000 BTU/hr 100,000 BTU/hr | 70,000 BTU/hr 125,000 BTU/hr |
| Type of Gas | | Propane | Propane | Propane | Propane |
| Gas Supply Pressure to Regulator Maximum | | Cylinder Pressure | Cylinder Pressure | Cylinder Pressure | Cylinder Pressure |
| Minimum (for purpose of Input Adjustment) | | 5psig | 5psig | 5psig | 5psig |
| Manifold Pressure | | 11" W.C | 11" W.C | 11" W.C | 11" W.C |
| Gas Consumption | | 1.4lbs/hr 2.3lbs/hr | 1.4lbs/hr 2.8lbs/hr | 3.3lbs/hr 4.6lbs/hr | 3.3lbs/hr 5.8lbs/hr |
| Electrical Input | | 120V, 60Hz, 1Ø | 120V, 60Hz, 1Ø | 120V, 60Hz, 1Ø | 120V, 60Hz, 1Ø |
| Amperage | Load | 0.65amps | 0.65amps | 0.7amps | 0.7amps |
| Fan | Unload Load | 3570rpm 3300rpm | 3570rpm 3300rpm | 3580rpm 3300rpm | 3580rpm 3300rpm |
| Ignition | | Continuous Spark | Continuous Spark | Continuous Spark | Continuous Spark |
| Spark Gap | | 0.16" (4mm) | 0.16" (4mm) | 0.16" (4mm) | 0.16" (4mm) |
| Size (LxWxH) | | 19.3"x8.3"x15.2" (490x211x386)mm | 19.3"x8.3"x15.2" (490x211x386)mm | 25.6"x12.7"x15.6" (650x323x396)mm 25.6"x11.8"x16.1" (650x300x409)mm | 25.6"x12.7"x15.6" (650x323x396)mm 25.6"x11.8"x16.1" (650x300x409)mm |
| Weight | | 14.3lbs (6.48kg) | 14.3lbs (6.48kg) | 21.5lbs/21lbs/20.8lbs (9.75kg/9.5kg/9.4kg) | 21.5lbs/21lbs/20.8lbs (9.75kg/9.5kg/9.4kg) |

PROPANE CONSTRUCTION HEATER



GENERAL SAFETY INSTRUCTION

Accidents are always tragic especially because so many of them could have been prevented with little care and judgment. There are some basic good practices, we hope you will follow for safe use of your heater.

IMPORTANT SAFETY INSTRUCTION

- Children should be carefully supervised, when they are in the area.
- Always maintain proper clearance from combustible materials. Minimum clearance from combustibles: Side - 24" (61cm); Top - 36" (91cm); Front - 72" (1.8M). Floor - combustible. Not for use on finished floors.
- Heater must be placed on level and stable surface.
- Never place anything including clothes or other flammable items on the heater.
- The appliance area shall be kept clear and free from combustible materials, gasoline and other flammable vapours and liquids.
- Do not modify or operate a heater which has been modified.
- Adequate clearance for accessibility and for combustion & ventilation air supply must be maintained at all times when the heater is operating.
- Service and repair should be done by a qualified service person. The heater should be inspected before each use and at least annually by a qualified person. More frequent cleaning may be required as necessary. Do not service while hot or operating.
- Never connect heater to an unregulated gas supply.
- The heater is shipped from the factory for LP(Propane) gas. This heater is for use with propane gas only, do not convert heater to any other gas. Installation must conform to local codes or, in the absence, with the standard for the Storage and Handling of Liquefied Petroleum Gases ANSI/NFPA NFPA 58 and the Natural Gas and Propane Installation Code CSA B149.1
- The minimum and maximum inlet pressures to the regulator from the gas tank are 5 psi and bottle pressure, respectively. Use only the regulator & hose assembly provided with the heater. Inspect the regulator/hose assembly prior to each use of the heater. If there is excessive abrasion or wear, or hose is cut, replace with regulator/hose assembly listed on the parts list prior to using this heater.
- Gas supply connections should be checked using a 50/50 solution of liquid dish soap and never use a flame to check for gas leaks.
- The electrical connection & grounding must comply with National Electrical Code. ANSI/NFPA 70 or in Canada CSA C22.1, Canadian Electrical Code, Part 1. Use only a properly grounded three (3) prong receptacle.
- Do not restrict inlet or outlet by any means. The flow of combustion and ventilation air is not to be obstructed.
- Forced air heaters should not be directed toward any propane or gas container within 20 feet (6M) of the exit nozzle. The heater should also be located at least 6 (1.8M) feet away from any propane gas container (regulations in Canada are 10 feet (3M)).
- The propane cylinder supply system must be arranged to provide for vapour withdrawal from the operating cylinder.

⚠ WARNING: Motor and fan must be running before lighting, during operation and at shutdown, in order to prevent a flame-out condition which could result in personal injury or property damage.

PRODUCT FEATURES

- Portable & Stable
- Wind Resistant & Rain Protected
- Continuous Spark Ignition or Piezo Electric Spark Ignition
- 100% Safety Shutoff System
- Adjustable Input Ratings



PROPANE CONSTRUCTION HEATER

UNPACKING HEATER

1. Remove heater from carton.
2. Remove all protective packing applied to heater for shipment.
3. Retain cartons and packaging material until unit is operated and found in good condition.
4. Check heater for any shipping damage. If heater shows any external or internal damage, promptly inform dealer/distributor where you purchased heater.

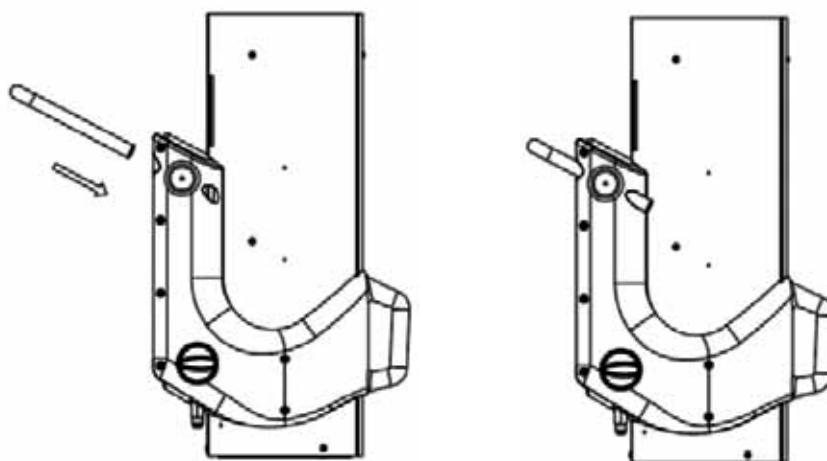
Assembly Components and Instructions for RMC-FA100C/L and RMC-FA125L/L-01

Tools required for assembly:
Phillips head screw driver
and adjustable wrench

1. Assemble the Leg:

Parts Required: Leg 1 pc

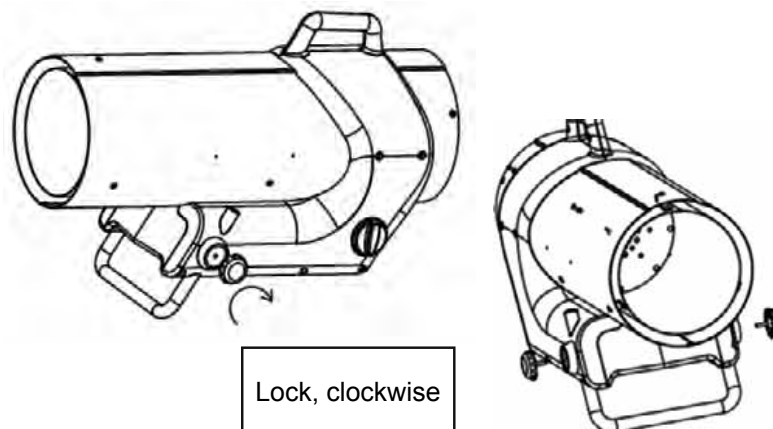
Place the heater as shown,
insert the leg into holes of
the base, then adjust
to the desired height.



2. Assemble the Height Control Screw:

Parts Required: Height Control Screw 2 pcs

Turn the Height Control Screw
clockwise to lock it. Turn the
Height Control Screw counter-
clockwise to unlock it.



PROPANE CONSTRUCTION HEATER

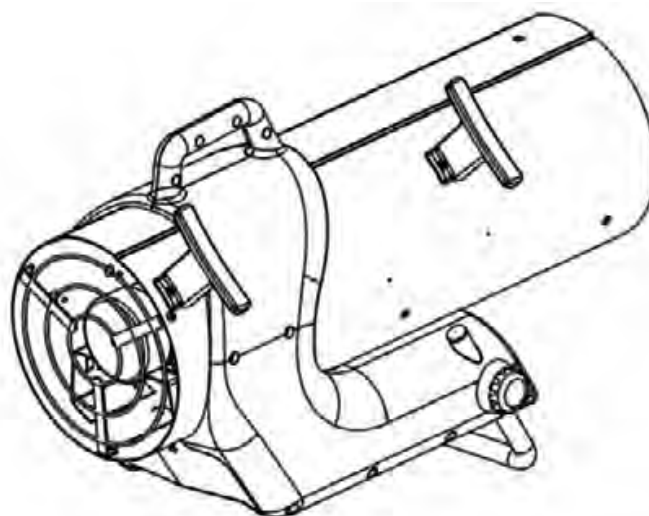


RMC-FA100C/L
RMC-FA125L/L-01

3. Assembling the Cord Wrap Attachments:

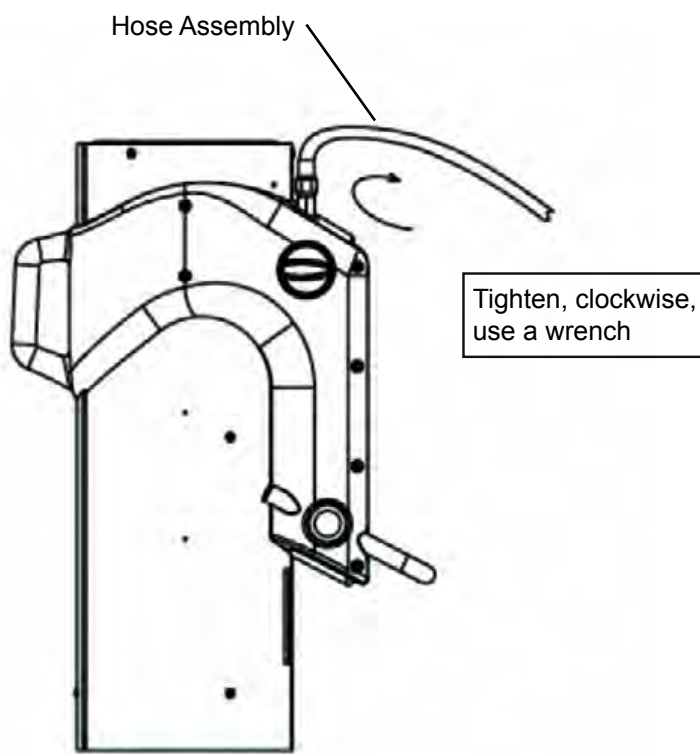
Parts Required: Screw ST3.5X10,
(4 pc in the Accessories bag),
and Cord Wrap Attachment 2 pc)

Place the cord wrap attachment
as shown, then use Phillips
screwdriver to tighten the screws
and secure the cord wrap attachments.



4. Regulator and Hose Connection:

See figure on right.
Connect the hose tightly to
the heater using a wrench.
Please also refer to
page 8 in the manual.





PROPANE CONSTRUCTION HEATER

INFORMATION ON SIZE * CAPACITY OF PROPANE GAS CYLINDERS:

The chart below shows the number and size of propane tanks needed to run this heater.

*Less gas is vaporized at lower temperatures.

You may need two or more 100 pound tanks or one larger tank in colder weather.

(See the parts list for your model of heater to get the specified regulator assembly.)

| Temperature (°F) At tank | Number of Tanks | |
|-----------------------------|---------------------|----------------------------|
| | 50,000-60,000 BTU/h | 100,000 - 125,000 BTU/h |
| Above 32°F | 1 - 20lb | 2 - 100lb |
| 32°F | 1 - 20lb | 2 - 100lb |
| 20°F | 1 - 20lb | 2 - 100lb |
| 10°F | 1 - 20lb | 3 - 100lb |
| -10°F | 2 - 20lb | Use Larger Tank |
| -20°F | 1 - 100lb | Use Larger Tank |

The propane (LP) gas tank must also be equipped with the following:

- A collar to protect the Propane gas valve.
- A shutoff valve terminating a Propane gas cylinder valve outlet as specified in the American National Standards for Compressed Gas Cylinder Valve Outlets and Inlet Connections.
- A safety relief valve having direct communications with the vapor space of the tank.
- An arrangement of vapor withdrawal.

The propane (LP) gas pressure regulator and hose assembly supplied with this heater must be used without alteration.

The hose assembly shall be visually inspected prior to each use of the heater. If it is evident that there is excessive abrasion or wear, or the hose is cut, it must be replaced prior to the heater being put into operation. The replacement hose assembly shall be that specified by the manufacturer.

PROPANE CONSTRUCTION HEATER



INSTALLATION TO THE PROPANE GAS TANK

IMPORTANT: You must use a propane/LP gas supply cylinder that is compatible with the connection device provided with the hose and regulator.

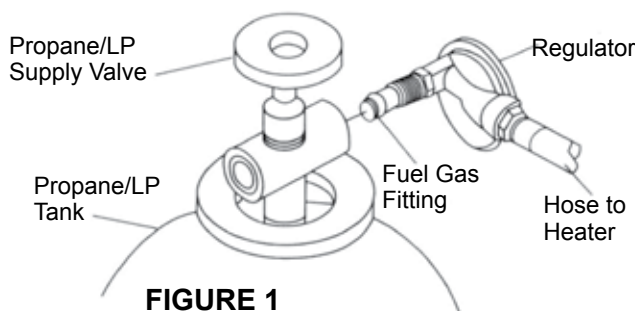
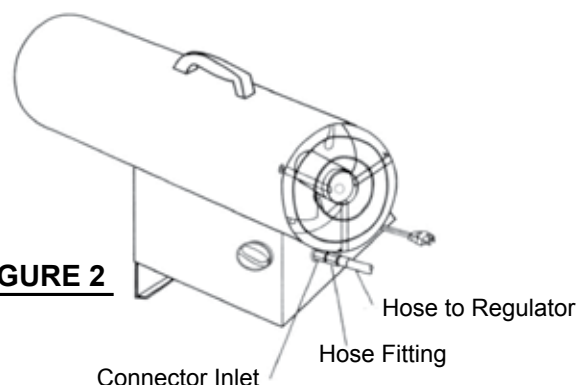


FIGURE 2



1. Provide propane/LP supply system (see size/capacity, page 7).
2. Connect fuel gas fitting hose/regulator assembly to propane LP tank(s). Turn fuel fitting counterclockwise into threads on tank. Tighten firmly using a wrench. Some models have a hand wheel that can be used to tighten the fitting. This hand wheel can be slid off of the nut so that a wrench can also be used to tighten the fitting. **IMPORTANT:** Position regulator so that hose leaving the regulator is in a horizontal position (see Figure 1)
3. Connect hose to heater inlet. Tighten firmly using a wrench. You must use the regulator supplied with heater.
4. Open propane/LP supply valve on propane/LP tank(s) slowly. NOTE: If not opened slowly, excess flow device in regulator may stop gas flow. If this happens, close propane/LP supply valve, wait one minute (or until you hear a click) and open again slowly.
5. Check all connections for leaks. Apply a 50/50 solution of liquid dish soap and water to gas joints. Bubbles forming show a leak that must be corrected.
6. Close propane / LP supply valve before attempting to repair connection.



WARNING: Purging and filling of LP gas tanks must be performed by personnel who has been thoroughly trained in accepted LP gas industry procedures. Failure to follow these instructions may result in explosion, fire, severe personal injury, or death.

REFILLING THE PROPANE GAS TANK

ALL NEW CYLINDERS MUST BE PURGED BEFORE THE FIRST FILLING.

- Turn heater gas valve knob and gas tank valve to OFF position.
- Propane tank valve equipped with the old style fitting has LEFT HANDED THREADS. Turn POL fitting CLOCKWISE to loosen. Protect POL fitting when disconnected from tank.
- Have tank filled by your local Propane gas supplier.
- Fasten full Propane tank and connect POL fitting to tank valve by turning COUNTERCLOCKWISE.
- With heater gas valve knob still in the OFF position, turn ON tank valve and check for leaks with soap solution.



PROPANE CONSTRUCTION HEATER

PROPANE SAFETY

Propane is safe to use when properly handled. Careless handling of the Propane gas tank could result in fire and/or an explosion. Therefore:

- Always keep tank/cylinder securely fastened in an upright position.
- Avoid tipping tank on its side when connected to a regulator since this may cause damage to diaphragm in regulator.
- Handle valves with care.
- Never connect an unregulated Propane tank to construction heater.
- Do not subject Propane tank to excessive heat.
- Tightly close the gas shutoff valve on the Propane tank after each use.
- The POL fitting must be protected when disconnected from the propane tank.
- Never store a Propane gas tank inside a building or in the vicinity of any gas burning appliance.

THE DISCONNECTED TANK MUST NEVER BE STORED IN A BUILDING, GARAGE OR ANY OTHER ENCLOSED AREA.

LEAK CHECKING

Check all gas connections with a soap solution to be sure they are tight and leak proof.

- The installation of your heater must meet all local codes and/or gas utility requirements or, in the absence of local codes, with the Storage and Handling of Liquefied Petroleum Gases, ANSI/ NFPA 58 and the Natural and Propane Installation Code, CSA B149.1.
- The minimum clearances to combustible construction: Side - 24" (61cm); Top - 36" (91cm); Front - 72" (1.8M); Floor - combustible, must be maintained at all times.
- The hose assembly should be visually inspected prior to each use of the heater. If it is evident that there is excessive abrasion or wear, or the hose is cut, it must be replaced prior to the heater being put into operation.
- The replacement hose assembly shall be that specified by the manufacturer (Refer to parts list).

LIGHTING INSTRUCTIONS

⚠ WARNING: Motor and fan must be running before lighting, during operation and shutdown, in order to prevent a flame-out condition which could result in personal injury or property damage.

1. Connect power cord to a properly grounded three (3) prong 120V, 60Hz, single phase receptacle.
2. Turn gas valve knob clockwise to OFF position.
3. Wait five (5) minutes to clear any gas. Then smell for gas, if you don't smell gas, go to next step.
4. Turn gas supply ON by turning Propane tank valve counterclockwise.
5. Push in and turn gas control knob counterclockwise to "LOW/IGN". This will light the burner. If needed, keep pressing control knob until the burner lights and keep depressing and turning from OFF to LOW/IGN on Piezo electric spark models.
6. Keep the valve knob depressed for at least 30 seconds after lighting the burner. After 30 seconds release valve knob.
7. If burner does not stay lit, repeat the lighting procedure.
8. When burner is lit, turn gas valve knob counterclockwise to desired setting.

PROPANE CONSTRUCTION HEATER



SHUTDOWN INSTRUCTIONS

⚠ WARNING: Motor and fan must be running before lighting, during operation and at shutdown, in order to prevent a flame-out condition which could result in personal injury or property damage. Turn gas valve knob clockwise to OFF position. Turn gas supply OFF by turning Propane tank valve clockwise to close. Disconnect the power cord once the heater has cooled to ambient temperature.

TEST FIRING HEATER

Test fire your construction heater, following the lighting instructions applicable to the gas control system employed. Leak test all gas connections with soap solution. Soap bubbles indicate gas leakage. DO NOT use a match or flame to test for gas leaks.

STORAGE

Never store a Propane gas tank inside a building or in the vicinity of any gas or oil burning appliance. When the Propane tank is not disconnected from the construction heater, the gas tank and heater must be stored outdoors in a well ventilated area, out of the reach of children. If for any reason the heater is to be stored indoors, the tank must be disconnected and stored outdoors in a well ventilated area out of reach of children, in accordance with the standard for the the Storage and Handling of Liquefied Petroleum Gases, ANSI / NFPA 58 and CSA B149.1, Natural Gas and Propane Installation Code. The plastic tank valve plug supplied with your tank must be tightly installed when the tank is disconnected from the heater.

MAINTENANCE INSTRUCTIONS

1. Turn unit off, allow heater to fully cool and disconnect propane hose before performing any Maintenance functions. Unplug the unit from the 120V receptacle.
2. Keep unit clean and keep the inside of the torpedo housing debris free.
3. Have unit checked by a qualified technician at least once a year, preferably prior to the heating season.

TROUBLESHOOTING

| PROBLEM | POSSIBLE CAUSE | CORRECTIVE ACTION |
|--|--|---|
| 1. Fan does not turn when electrical connection is made. | 1. No electric power to heater. 2. Fan blade contacts inside of heater housing. 3. Fan blade(s) bent 4. Fan motor defective. | 1. Check current to electric outlet. If voltage is correct, check power cord and extension cord for cuts and breaks. 2. Be sure that housing is not damaged. Make sure there are no obstructions to the fan. 3. Straighten blade(s) to match others. 4. Replace motor. |
| 2. Heater will not fire. | 1. No spark at ignitor. 2. Improper spark gap. 3. Bad electrode. | 1. Check ignitor wire. Re-attach or tighten if loose. Check Spark module. Replace if necessary. 2. Set gap (See specifications for gap). 3. Replace Spark Plug. |
| 3. Heater quits while running. | 1. Internal temperature too high causing limit switch to shut down operation. 2. Damaged Control Valve. 3. Dust or debris build-up inside of heater. | 1. If the heaters output is restricted, internal temperature becomes too high. Move heater away from any obstructions. 2. Replace Control Valve. 3. Clean inside of heater. |

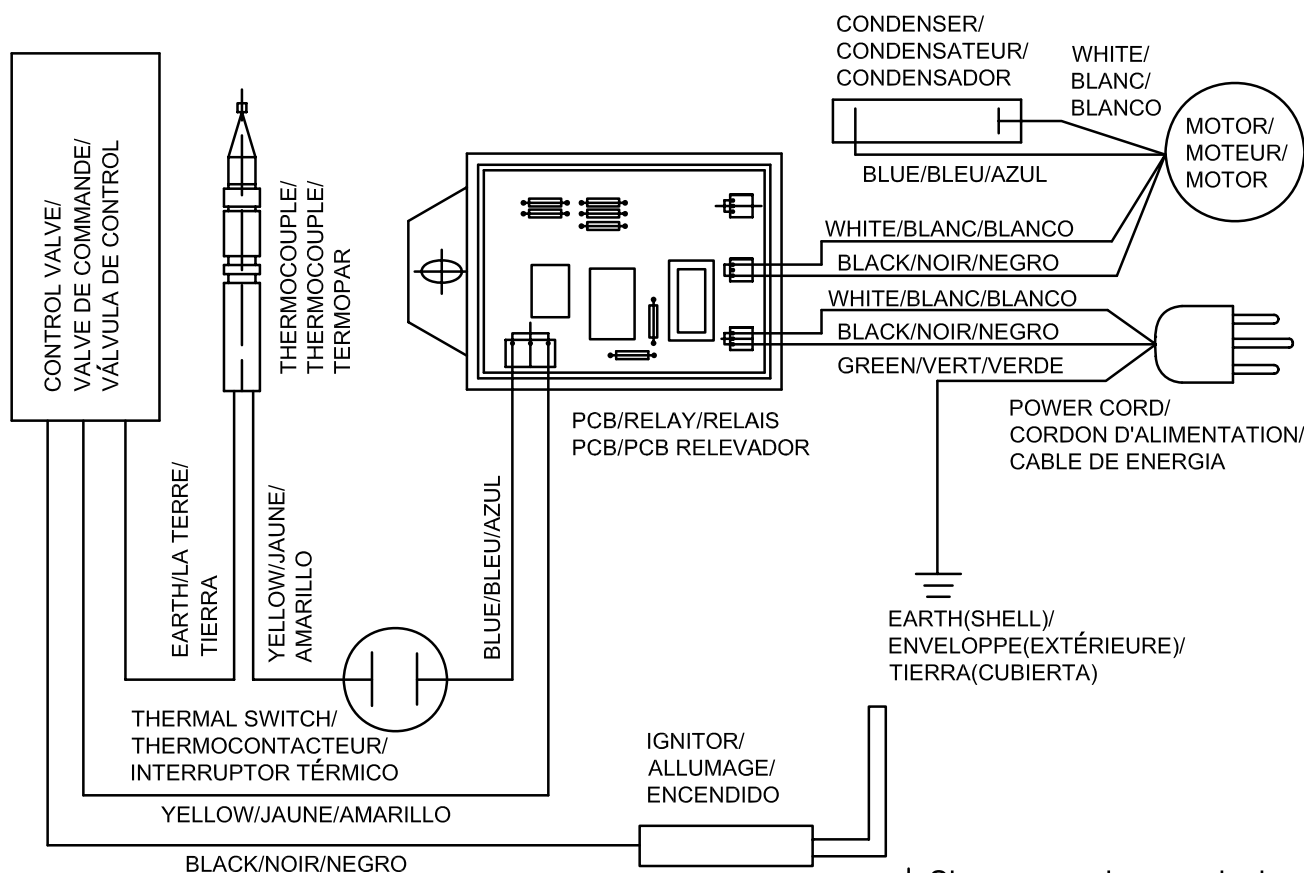
Always be sure to follow proper maintenance procedures, by cleaning the heater once per month during regular usage, and check spark gap at least once per season.



PROPANE CONSTRUCTION HEATER

WIRING DIAGRAMS

PIEZO/MANUAL SPARK MODELS MODÈLES À ÉTINCELLE PIÉZOÉLECTRIQUE/MANUELLE MODELOS DE CHISPA MANUAL O PIEZOELÉCTRICA

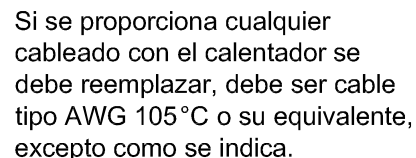


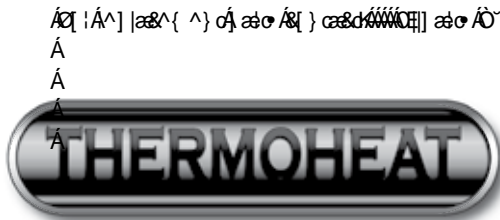
If any original wiring supplied with the heater must be replaced, it must be type AWG 105°C wire or its equivalent, except as indicated.

Si vous devez faire remplacer les fils d'origine du radiateur, procurez-vous du fil AWG 105 Celsius ou l'équivalent, sauf indication contraire.

Si se proporciona cualquier cableado con el calentador se debe reemplazar, debe ser cable tipo AWG 105°C o su equivalente, excepto como se indica.

CONTINUOUS SPARK MODELS/MODÈLES À ÉTINCELLE CONTINUE
MODELOS DE CHISPA CONTINUA





PROPANE CONSTRUCTION HEATER

REPLACEMENT PARTS LIST

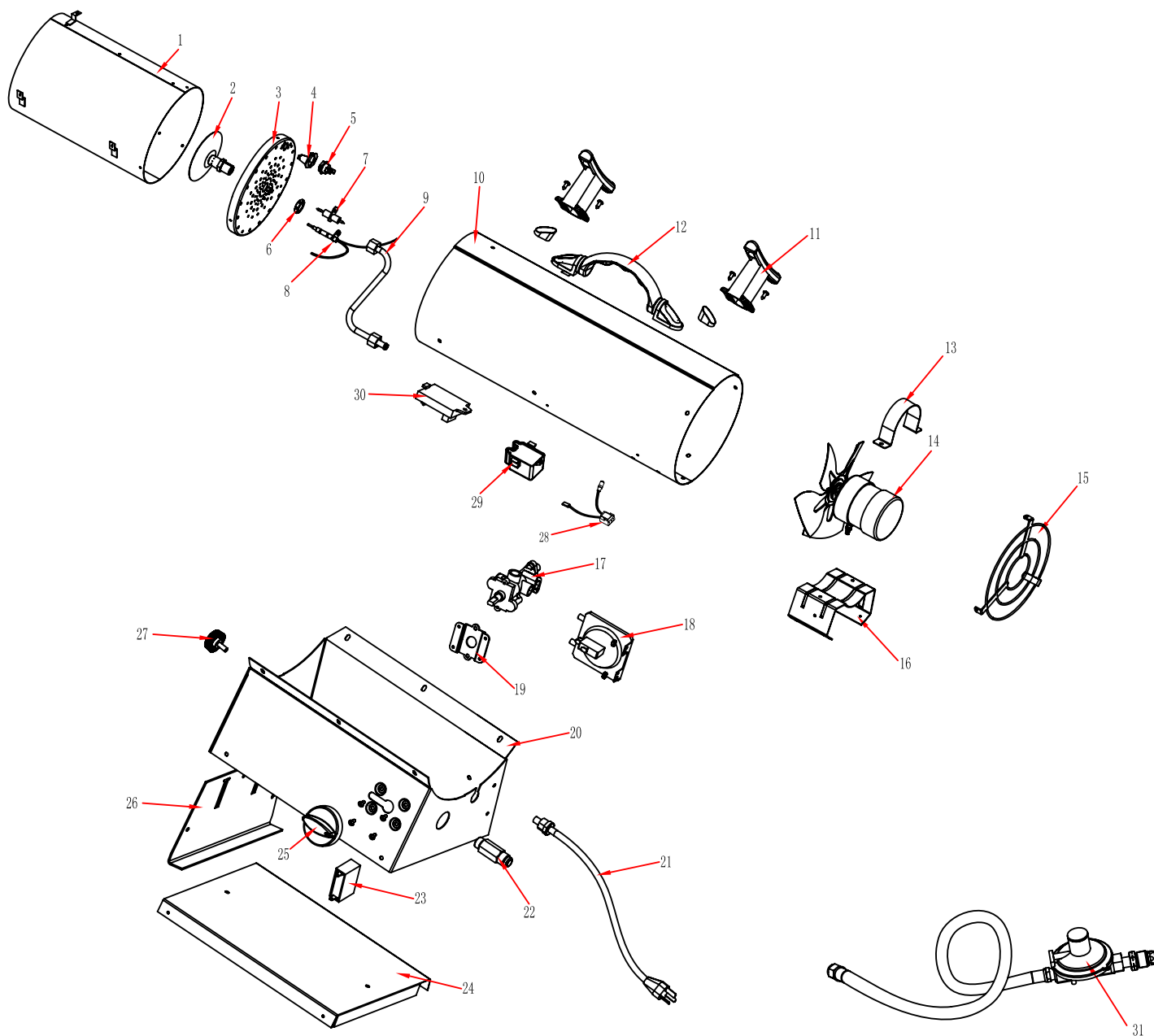
| ITEM No. | DESCRIPTION | QTY | PART NUMBER | | | |
|----------|--|-----|------------------------|------------------------|----------------------------|----------------------------|
| | | | 50 SERIES | 60 SERIES | 100 SERIES (EX. C/L) | 125 SERIES (EX. C/L) |
| 1 | INNER SHELL ASS'Y | 1 | 2304818 | 2304818 | 2304929 | 2304929 |
| 2 | NOZZLE | 1 | 2304942 | 2325121 | 2304943 | 5030077 |
| 3 | FLAME HOLDER CAP | 1 | 2304819 | 2325120 | 2304930 | 2325122 |
| 4 | THERMAL SWITCH BRKT. | 1 | 2304826 | 2304826 | 2304826 | 2315515 |
| 5 | THERMAL SWITCH | 1 | 2201563 | 2201599 | 2201373 | 2201373 |
| 6 | NOZZLE NUT | 1 | 2304578 | 2304578 | 2304578 | 2304945 |
| 7 | SPARK PLUG ASSY | 1 | 2201375 | 2206033 | 2201392 | 2206034 |
| 8 | THERMOCOUPLE ASSY (1130/1474-425L) | 1 | 2304885 | 2304885 | 2304885 | 2304885 |
| 9 | GAS TUBING ASS'Y | 1 | 2304830 | 2304830 | 2304946 | 2325138 |
| 10 | OUTER SHELL - ORANGE | 1 | 2305403 | 2305403 | 2304922 | 2304922 |
| | OUTER SHELL - BLACK | 1 | 2315915 | 2315915 | N/A | N/A |
| | OUTER SHELL - GRAY | 1 | 2315956 | 2315956 | 2315916 | 2315916 |
| | OUTER SHELL - BLUE | 1 | 2315312 | 2315312 | N/A | N/A |
| 11 | CORD WRAP (some models only) | 2 | N/A | N/A | 2101423 | 2101423 |
| 12 | HANDLE ASSY - BLACK | 1 | 2101447 | 2101447 | 2101447 | 2101447 |
| | HANDLE ASSY - GRAY | 1 | 2305426 | 2305426 | 2305426 | 2305426 |
| 12.1 | SCREW - HANDLE FRONT | 1 | 2001355 | 2001355 | 2001355 | 2001355 |
| 12.2 | SCREW - HANDLE FRONT | 1 | 2001077 | 2001077 | 2001077 | 2001077 |
| 12.3 | NUT - HANDLE REAR | 1 | 2000384 | 2000384 | 2000384 | 2000384 |
| 13 | MOTOR SUPPORT | 1 | 2304823 | 2304823 | 2304823 | 2304823 |
| 13.1 | BOLT-MOTOR MOUNTING | 2 | 2001332 | 2001332 | 2001332 | 2001332 |
| 13.2 | SLEEVE | 1 | 2304949 | 2304949 | 2304949 | 2304949 |
| 14 | MOTOR ASS'Y | 1 | 2305447 | 2304547 | 2304548 | 2304548 |
| 14.1 | MOTOR - FAN | 1 | 2304821 | 2304821 | 2304936 | 2304936 |
| 15 | GUARD FAN - BLACK | 1 | 2304828 | 2304828 | 2304939 | 2304939 |
| | GUARD FAN - GRAY | 1 | 2305411 | 2305411 | 2305412 | 2305412 |
| 16 | MOTOR BRKT | 1 | 2304937 | 2304937 | 2304938 | 2304938 |
| 17 | VALVE - GAS | 1 | 5050510 (K-890D-A6) | 5051033 (K-890D-A6) | 5050474 (K-890SL-A6(A)) | 5051036 (K-890D-A6 (A)) |
| 18 | PRESSURE SWITCH | 1 | N/A | N/A | 2305976 | 2305976 |
| 19 | VALVE BRKT | 1 | 2304624 | 2304624 | 2304624 | 2304624 |
| 20 | BASE ASSY - BLACK | 1 | 2304923 | 2304923 | 2304924 | 2304924 |
| | BASE ASSY - GREY | 1 | 2305405 | 2305405 | N/A | N/A |
| 21 | POWER CORD ASS'Y | 1 | 2101670 | 2101670 | 2101673 | 2101673 |
| 22 | GAS CONNECTOR INLET | 1 | 2304831 | 2304831 | 2304831 | 2304831 |
| 23 | CAPACITOR | 1 | 2201372 | 2201372 | 2301390 | 2301390 |
| 24 | BASE LOWER - BLACK | 1 | 2304925 | 2304925 | 2304926 | 2304926 |
| | BASE LOWER - GREY | 1 | 2305407 | 2305407 | N/A | N/A |
| 25 | KNOB GAS VALVE - BLACK | 1 | 2101451 | 2101451 | 2101451 | 2101451 |
| | KNOB GAS VALVE - ORANGE | 1 | 2305466 | 2305466 | N/A | N/A |
| 26 | HEIGHT CONTROLLER - BLACK | 1 | 2304927 | 2304927 | 2304928 | 2304928 |
| | HEIGHT CONTROLLER - GREY | 1 | 2305409 | 2305409 | N/A | N/A |
| 27 | HEIGHT CONTROL SCREW - BLACK | 1 | 2304510 | 2304510 | 2304510 | 2304510 |
| | HEIGHT CONTROL SCREW - ORANGE | 1 | 2305467 | 2305467 | N/A | N/A |
| 28 | LEAD WIRE ASSY | 1 | 2201371 | 2201371 | 2201371 | 2201371 |
| 29 | SPARK MODULE | 1 | 2201391 | 2201391 | 2201391 | 2201391 |
| 30 | PCB ASSEMBLY | 1 | 2201369 | 2201369 | 2201369 | 2201369 |
| 31 | REG & HOSE ASSY - 10FT (3M) | 1 | 5002614 | 5002614 | 5002758+5002721 | 5055539+5002721 |
| | REG & HOSE ASSY - 10FT (3M) w/HANDWHEEL | 1 | 5055533 | 5055533 | 5002769+5002721 | 5055540+5002721 |
| | REG & HOSE ASSY - 15FT (4.6M) | 1 | 5055298 | 5055298 | 5002758+5055301 | 5055539+5055301 |
| | REG & HOSE ASSY - 15FT (4.6M) w/HAND WHEEL | 1 | 5055415 | 5055415 | 5002769+5055301 | 5055540+5055301 |

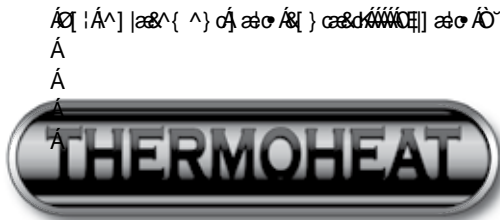
PROPANE CONSTRUCTION HEATER



REPLACEMENT PARTS LIST

MODELS: RMC-FA50/C/L
RMC-FA60/L/L-01
RMC-FA100/C/L
RMC-FA125/L/L-01





PROPANE CONSTRUCTION HEATER

REPLACEMENT PARTS LIST

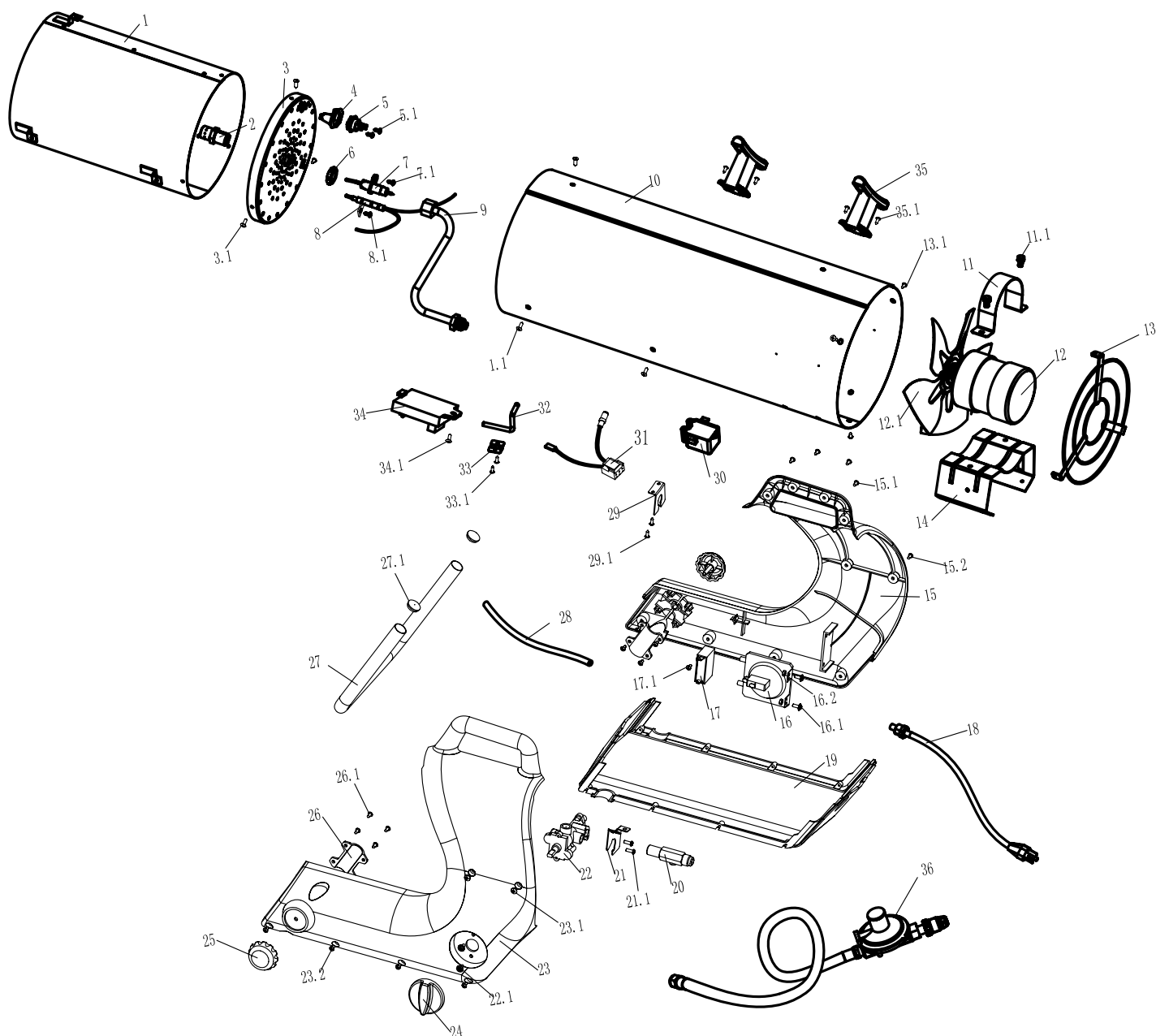
| ITEM No. | DESCRIPTION | QTY | PART NUMBER | |
|----------|------------------------------------|-----|---------------------------------------|---------------------------------------|
| | | | FA100L | FA125L |
| 1 | SHELL IN ASSY | 1 | 2304929 | 2304929 |
| 1.1 | SCREW | 5 | 2001355 | 2001355 |
| 2 | NOZZLE | 1 | 2304943 | 2325123 |
| 3 | FLAME HOLDER CAP | 1 | 2304930 | 2304930 |
| 3.1 | SCREW | 3 | 2001355 | 2001355 |
| 4 | THERMAL SWITCH BRACKET | 1 | 2304826 | 2304826 |
| 5 | THERMAL SWITCH | 1 | 2201373 | 2201373 |
| 5.1 | SCREW | 2 | 2001154 | 2001154 |
| 6 | NOZZLE NUT | 1 | 2304578 | 2304578 |
| 7 | SPARK PLUG ASSY | 1 | 2201392 | 2206035 |
| 7.1 | SCREW | 1 | 2001355 | 2001355 |
| 8 | THERMOCOUPLE ASSY (1130/1474-425L) | 1 | 2304885 | 2304885 |
| 8.1 | SCREW | 1 | 2001355 | 2001355 |
| 9 | TUBING ASSY | 1 | 2304946 | 2325318 |
| 10 | OUT SHELL | 1 | 2315916 (black) | 2315916 (black) |
| 11 | MOTOR SUPPORT | 1 | 2304823 | 2304823 |
| 11.1 | BOLT | 2 | 2001332 | 2001332 |
| 12 | MOTOR ASSY | 1 | 2304548 | 2304548 |
| 12.1 | MOTOR FAN | 1 | 2304936 | 2304936 |
| 13 | GUARD FAN | 1 | 2304939 | 2304939 |
| 14 | MOTOR BRACKET | 1 | 2304938 | 2304938 |
| 15 | BASE RIGHT | 1 | 2101665 | 2101665 |
| 15.1 | SCREW | 8 | 2001081 | 2001081 |
| 15.2 | SCREW | 2 | 2000659 | 2000659 |
| 16 | PRESSURE SWITCH | 1 | 2305976 | 2305976 |
| 16.1 | SCREW | 1 | 2000375 | 2000375 |
| 16.2 | NUT | 1 | 2001145 | 2001145 |
| 17 | CAPACITY | 1 | 2201390 | 2201390 |
| 17.1 | SCREW | 1 | 2001425 | 2001425 |
| 18 | POWER CORD ASSY | 1 | 2101673 | 2101673 |
| 19 | BASE LOWER | 1 | 2101666 | 2101666 |
| 20 | CONNECTOR INLET | 1 | 2315446 | 2315446 |
| 21 | VALVE BRACKET | 1 | 2315444 | 2315444 |
| 21.1 | SCREW | 2 | 2001072 | 2001072 |
| 22 | VALVE | 1 | 5050474 | 5051036 |
| 22.1 | SCREW | 2 | 2000356 | 2000356 |
| 23 | BASE LEFT | 1 | 2101664 | 2101664 |
| 23.1 | SCREW | 2 | 2000659 | 2000659 |
| 23.2 | SCREW | 4 | 2001081 | 2001081 |
| 24 | KNOB | 1 | 2315926 (black) | 2315926 (black) |
| 25 | HEIGHT CONTROL SCREW | 2 | 2315925 (black) | 2315925 (black) |
| 26 | LEG HOLDER | 2 | 2101667 | 2101667 |
| 26.1 | SCREW | 12 | 2001081 | 2001081 |
| 27 | LEG | 1 | 2315403 | 2315403 |
| 27.1 | PLASTIC PLUG | 2 | 2101672 | 2101672 |
| 28 | PLASTIC TUBE | 1 | 2101052 | 2101052 |
| 29 | POWER CORD BRACKET | 1 | 2315445 | 2315445 |
| 29.1 | SCREW | 2 | 2001355 | 2001355 |
| 30 | SPARK MODULE | 1 | 2201391 | 2201391 |
| 31 | LEAD WIRE ASSY | 1 | 2201371 | 2201371 |
| 32 | AL TUBE | 1 | 2305977 | 2305977 |
| 33 | AL TUBE BRACKET | 1 | 2305461 | 2305461 |
| 33.1 | SCREW | 2 | 2001355 | 2001355 |
| 34 | PCB ASSY | 1 | 2201369 | 2201369 |
| 34.1 | SCREW | 1 | 2001355 | 2001355 |
| 35 | CORD WRAP | 2 | 2101423 | 2101423 |
| 35.1 | SCREW | 4 | 2001081 | 2001081 |
| 36 | REG & HOSE ASSY - 10FT (3M) | 1 | 5002769&5002721 (TYQ-6-LL38-00,10FT) | 5055540&5002721 (TYQ-6-LL38-00,10FT) |
| | REG & HOSE ASSY -15FT (4.6M) | 1 | 02769&5055301 (TYQ-6-LL38-00,15FT) | 5055540&5055301 (TYQ-6-LL38-00,15FT) |

PROPANE CONSTRUCTION HEATER



REPLACEMENT PARTS LIST

MODELS: RMC-FA100/L
RMC-FA125/L/L-01



THIS PAGE INTENTIONALLY LEFT BLANK