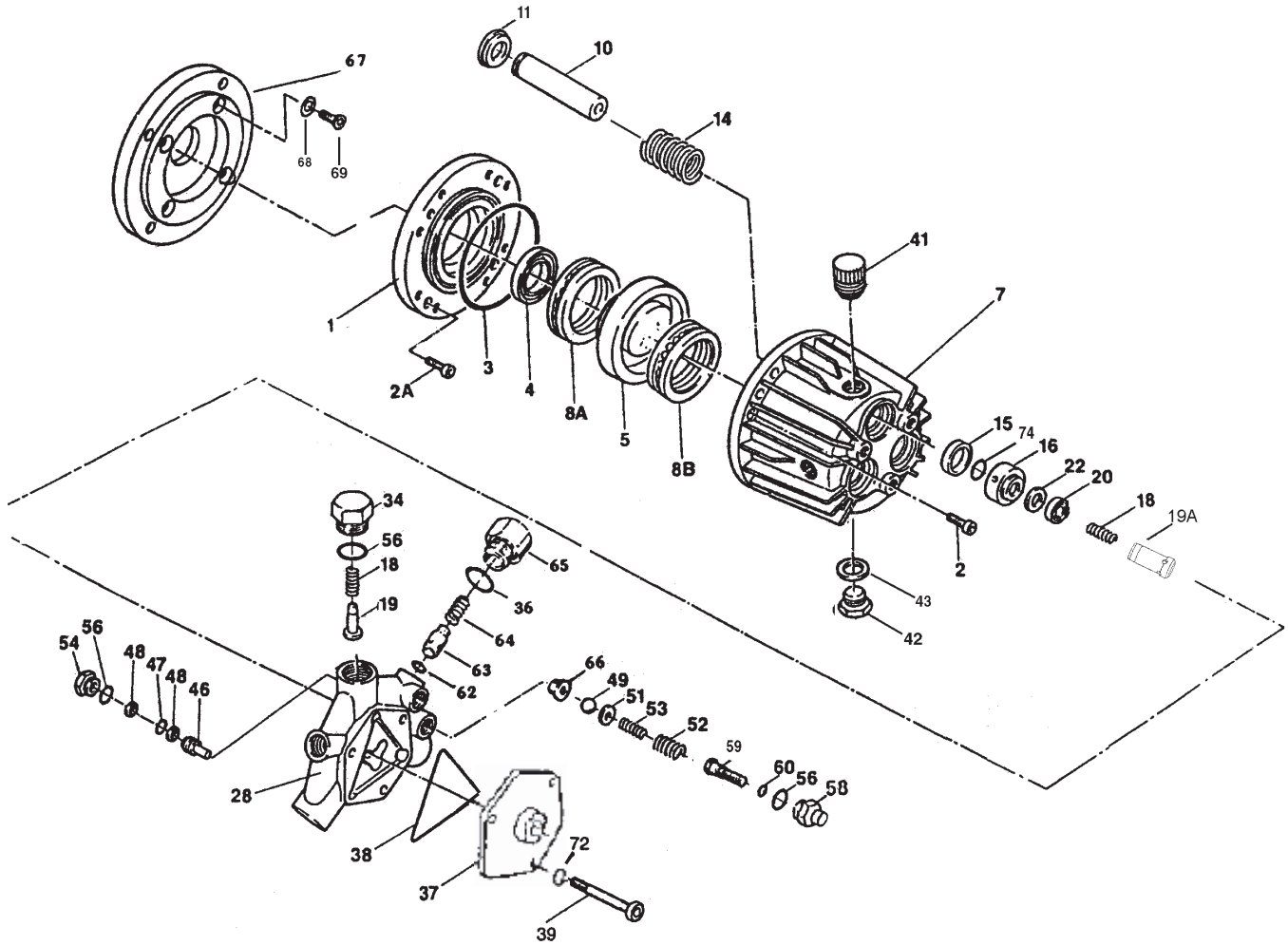


## HR SERIES EXPLODED VIEW



## HR SERIES REPAIR KITS

### Plunger Packing Kit # 09138

Qty.	Part #	Description	Key #
3	08087	V-Sleeve	20
3	07904	Pressure Ring	22

### Valve Assembly Kit # 09125

Qty.	Part #	Description	Key #
6	07374	Valve Spring	18
3	07375	Valve Cone (Outlet)	19
3	06267	Valve Cone (Inlet)	19A

### Oil Seal Kit # 09144

Qty.	Part #	Description	Key #
3	08356-0010	Oil Seal	15

### Unloader Repair Kit # 09235

Qty.	Part #	Description	Key #
2	12007	O-Ring, Adapter	56
1	12326	O-Ring	62
2	12031-0002	Back up Ring, Piston	48
1	06227	Ball, By Pass Valve	49
1	07935A	Seat, By pass Valve	66
1	07913	O-Ring	36

### Complete Manifold Kit # 08090

Includes Item Numbers:  
18, 19, 20, 28, 34, 36, 38, 46, 47, 48, 49, 51, 52,  
53, 54, 56, 58, 59, 60, 62, 63, 64, 65, 66

## HR SERIES PARTS LIST

<u>ITEM</u>	<u>PART #</u>	<u>DESCRIPTION</u>	<u>QTY.</u>	<u>ITEM</u>	<u>PART #</u>	<u>DESCRIPTION</u>	<u>QTY.</u>
1	###	Adapting Plate (HR20/HRC20)	1	37	06229*	Suction Flange	1
1	###	Adapting Plate (HR25/HRC25/HR30/HRC30)	1	38	07910A	O-Ring, Formed	1
2	07881	Socket Head Cap Screw, 1/4"	8	39	06200*	Stud Bolt (HR20/HRC20)	3
2A	07435	Socket Head Cap Screw, 3/8"	4	39	06228	Stud Bolt (HR25/HRC25/HR30/HRC30)	3
3	07344	O-Ring	1	41	08083	Oil Fill Cap	1
4	07805	Radial Shaft Seal	1	42	06273	Oil Drain Plug	1
5	***	Swash Plate (HR20/HRC20)	1	43	08192	Gasket	1
5	***	Swash Plate (HR30/HRC30)	1	44	08250	Sight Glass (Optional)	1
7	@@	Crankcase	1	46	07914B	Piston	1
8A	###	Rear Bearing, Complete (HR20/HRC20)	1	47	07937	O-Ring	1
8A	###	Rear Bearing, Complete (HR25/HRC25/HR30/HRC30)	1	48	12031-0002	Back up Ring	2
8B	***	Front Bearing, Complete	1	49	06227	Ball, By pass Valve	1
10	08070	Plunger Assembly, HR20/HR25/HR30	3	51	07917A	Washer	1
10	08030	Plunger Assembly, Ceramic HRC20/HRC20/HRC30	3	52	07918	Adjusting Spring	1
11	06212	Spring Disc Retainer	3	53	07919	Pressure Spring	1
14	07873	Plunger Spring	3	54	06239	Guide Plug	1
15	08356-0010	Oil Seal, Viton	3	56	12007	O-Ring	5
16	07899A	Spacer Ring	3	58	07936A	Adjusting Plug	1
18	07374	Valve Spring	6	59	07938A	Adjusting Screw	1
19	07375	Valve Cone (Discharge)	3	60	07937	O-Ring	1
19A	06267	Valve Cone (Inlet)	3	62	12326	O-Ring	1
20	08087	V-Sleeve	3	63	12325	Kick-Back Valve Cone	1
22	07904	Pressure Ring	3	64	12328	Kick-Back Valve Spring	1
28	08065*	Manifold	1	65	12340	Kick-Back Valve Spring Retainer	1
34	07379	Manifold Plug	3	66	07935A	By Pass Valve Seat	1
36	07913	O-Ring	1	67	07466EX	Mounting Plate	1
				68	07468	Washer	4
				69	07467	Bolt	4
				72	06224*	Washer	3
				74	08573	O-Ring (Flinger)	3

\* HR20/HRC20 pumps manufactured prior to 5/97, require different parts than those listed on this page  
Please call 800-475-5660 for assistance

### Only available as part of the Flange Assembly, part #17001. ( includes key number's 1, 3, 4, 8A )

\*\*\* Only available as part of the Wobble Plate Assembly, part # 17007 for the HRC30 or part # 17009  
for the HR20 ( includes key number's 5, 8B )

@@ To order the crankcase, you would need to send in the old crankcase so we can match it up to the  
new crankcase.

## HR SERIES TORQUE SPECIFICATIONS

<u>Position</u>	<u>Item#</u>	<u>Description</u>	<u>Torque Amount (ft.-lbs)</u>
2	07881A	Socket Head Cap Screw	100 in.-lbs.
39	06200	Stud Bolt, 8mm (older style HR20)	220 in.-lbs.
39	06270/06228	Stud Bolt, 10mm	360 in.-lbs.