



MODEL K100

Spec. 3196G12

**PARTS LIST
UNIT SPECIFICATIONS
ASSEMBLY INSTRUCTIONS
SERVICE CENTERS
WARRANTY STATEMENT**



 **KOEHRING®**
ATOMASTER DIVISION
BOWLING GREEN, KENTUCKY 42101

When ordering your part, be sure to provide all pertinent facts when you call or visit your service dealer. The model and serial number of your portable heater will be found on a decal toward the rear [motor end] of your unit. When ordering repair parts always give the following:

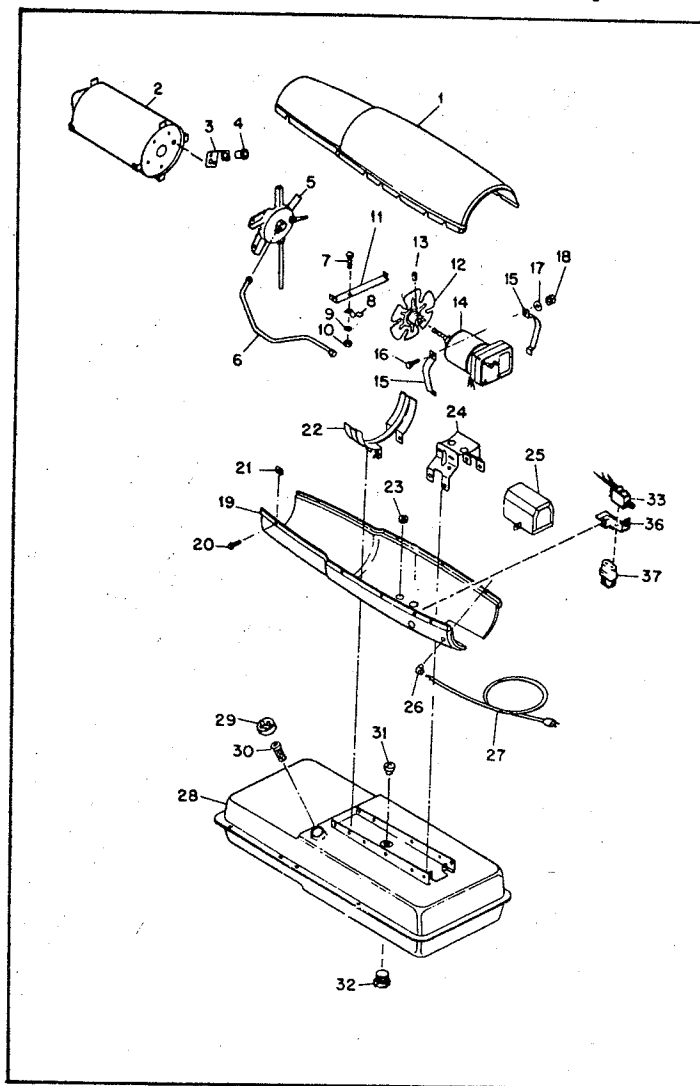
A) Part Number

B) Model Number

C) Description

NOTE: All painted service parts will be shipped painted a common color of baked enamel finish coat. Parts may be repainted if necessary.

Index No.	Part Number	Part Name	Qty.
1	M13134-3AZ	Shell, Upper	1
2	M16781-4	Chamber, Combustion	1
	M11084-27*	Screw (Combustion Chamber attaching front)	2
	M11084-29*	Screw (Combustion Chamber attaching rear)	2
3	M16660	Bracket, Photo cell	1
	M10908-1*	Screw (Photo cell Bracket to Combustion Chamber rear head)	2
4	M16656-4	Cell and Bushing Assy.	1
5	M23150-1	Burner Head Assembly	1
	M11084-27*	Screw (Burner Head to Combustion Chamber)	3
6	M16879	Air Line	1
7	M12461-27	Screw, Slotted hex hd., No. 10-32x½ in.	1
8	M24717	Clamp, Tube	1
9	WLM-3	Lockwasher, No. 10	1
10	NPF-3C	Nut, Plain No. 10-32	1
11	M15807	Strap, Retainer	1
	M11084-27*	Screw (Retainer Strap to Lower Shell)	2
12	M23147	Fan	1
13	SF4-2½K	Set screw, Soc. hd., cup pt., ¼-20 (Fan to Motor Shaft)	2
14	M23149-7	Motor Package Assembly	1
15	M16661	Clamp, Motor	4
16	HC4-10C	Screw (Motor Clamps)	2
17	WLM-4*	Lockwasher, ¼ in. (Motor Clamps)	2
18	NPC-4C*	Nut, Hex, ¼-20 (Motor Clamps)	2
19	M16777AZ	Shell, Lower	1
20	M11084-27*	Screw (Upper Shell to Lower Shell)	6
21	M11271-6*	Nut, Tinnerman (Upper Shell to Lower Shell)	6
22	M12330	Bracket, Shell Support	1
	M11084-27*	Screw (Support Bracket to Lower Shell and Fuel Tank)	4
	M11084-29*	Screw (Lower Shell to Support Bracket)	2
23	1000576	Grommet (Ignition cable thru Lower Shell)	3
24	M25059-02	Bracket, Motor Support	1
	M11084-27*	Screw (Motor Support Bracket to Lower Shell and Fuel Tank)	6
25	M16697-02	Transformer, 5000 volt	1
	M11084-27	Screw (Transformer to Motor Support Bracket)	2
26	M11143-1	Bushing, Strain Relief (Service Cord to Lower Shell)	1
27	M10813-77	Cord Assembly, Extension	1
28	M27552-01AA	Tank Assembly, Fuel	1
29	M23284	Cap, Fuel Tank	1
30	M50323	Screen, Filler Neck	1



HEATER GENERAL ASSEMBLY, EXPLODED VIEW

31	M10990-3	Bushing, Rubber (Fuel Filter into Fuel Tank)	
32	M27417	Plug, Drain	1
33	M28898-03	Safety Control Assembly	1
36	M25296-1	Bracket, Starting Relay Mtg.	1
37	M12462-6	Relay, Starting	1
	RC2-2C*	Screw (Starting Relay to Mounting Bracket)	2
	ST2-2AC	Screw (Grounding)	1
	M11084-27	Screw (Relay Bracket to Shell)	1
	M9900-62	Wire Assembly, Black (To Starting Relay)	1
	M9900-80	Wire Assy. (To Breaker)	1
	M16615-1	Harness Assy.	1
	M13942-7	Connector (Cell and Bushing and Relay to Circuit Breaker)	3
	M13942-5	Connector (Relay Leads)	2

Index No.	Part Number	Part Name	Qty.
	M23150-1	Burner Head Assembly	1
1	M16790-8	. Filter, Tube	1
2	M19630	. Filter, Fuel	1
3	M13849	. Nut, Flared	1
4	M16741-18	. Ring, Retaining	1
	M23151-1	. Nozzle Adapter Assy.	1
5	M16791	. . Connector, Male	1
	M5976	. . Connector, Male	1
7	M8882	. . Sleeve, Nozzle Seal	1
8	M10659-1	. . Washer, Nozzle Seal	2
9	M10809-1	. . Spring, Nozzle Seal	1
10	M23103	. . Nozzle, Aspirating 0.66 GPH	1
11	M16535	. . Adapter, Nozzle	1
12	M10962-2	. Spark Plug	1
13	M16534	. Body, Burner Head	1

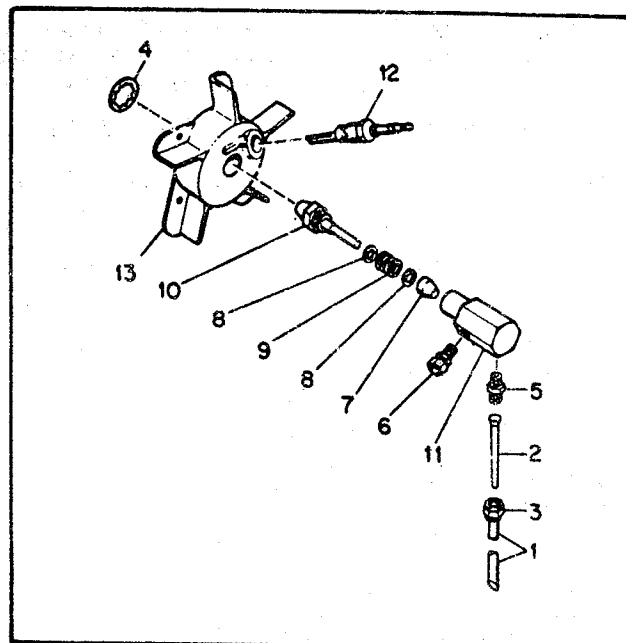


Figure 2. Burner Head Assembly

Index No.	Part Number	Part Name	Qty.
-	M23149-7	Motor Package Assembly	Ref.
1	M16545	. End Cover, Filter	1
2	M12461-31*	. Screw (Filter End Cover to Pump End cover)	4
3	WLI-3	. Lockwasher, Internal No. 10	4
4	M12179	. Intake Air Filter	1
5	M12244-1	. Output Filter Assy.	1
6	M11637	. Filter, Lint	1
7	M50545	. Front Cover, Pump (Port Plate)	1
8	M12461-32*	. Screw (End Cover to Motor)	6
9	WLI-3	. Lockwasher, Internal No. 10	6

Index No.	Part Number	Part Name	Qty.
10	M8643	. Blade	4
11	M22456-1	. Rotor	1
12	M22009	. Insert	1
13	M8645	. Pump Body	1
14	FHPF3-4C	. Screw (Pump Body to Motor)	2
15	M5976	. Connector, Male	1
16	M22997	. Plug, Hex hd.	1
17	M27694	. Screw, Pressure Adjustment	1
18	M10993-1	. Spring, Compression (Pressure Relief)	1
19	M8940	. Ball, ¼ in. dia.	1
20	M30718-01	. Motor	1

* Standard hardware. Purchase locally.

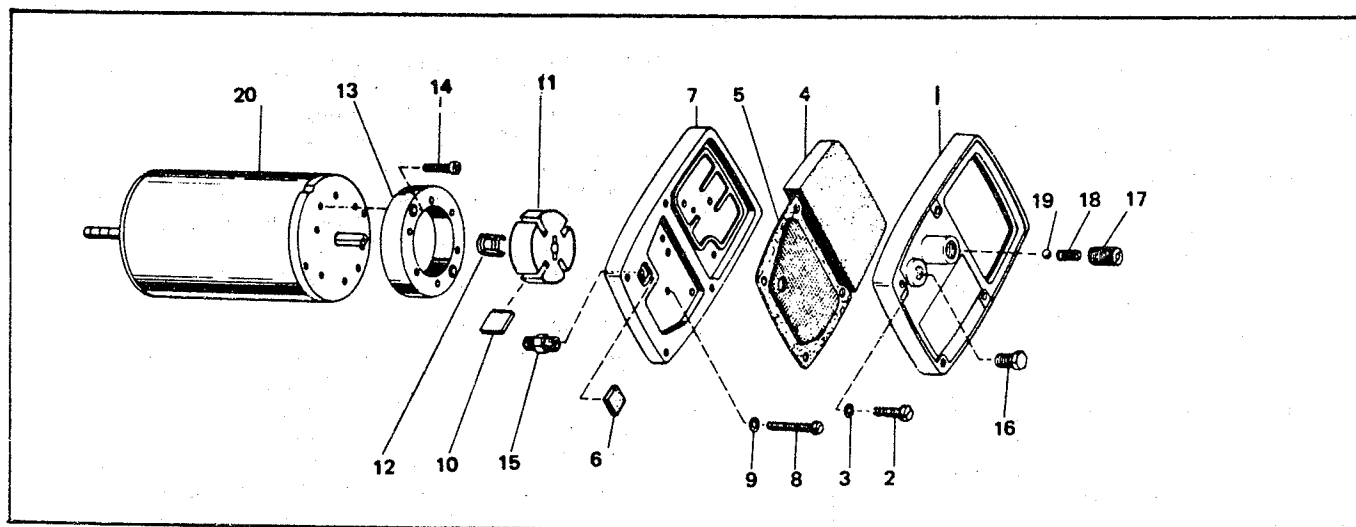


Figure 3. Motor Package Assembly

WHEELS, HANDLES, MARKINGS

Index No.	Part Number	Part Name	Qty.
1	M13830-3	Handle, Rear	1
2	M13831-3	Handle, Front	1
3	M12345-33	Screw, Handles and Wheel Support Frame to Fuel Tank	8
4	M12342-3	Wheel Support Frame	1
5	NTC-3C*	Nut, Nex 10-24 Torque Lock	8
6	M16801A	Axle	1
7	M19294	Wheel	2
8	M28526	Nut Cap	2
DECALS			
	M50722-01	Decal, Tradename	1
	M25352	Decal, Wiring	1
	M18196	Decal, Mfg. By	1
	M22743	Decal, Warning	1
	M50091	Owners Manual	1
	M50092-54	Manual, Model	1
	M50623	Decal Operation Instruction	1
	M50624-38	Decal, Model Data	1
	M50838	Decal, Warning ARL	1

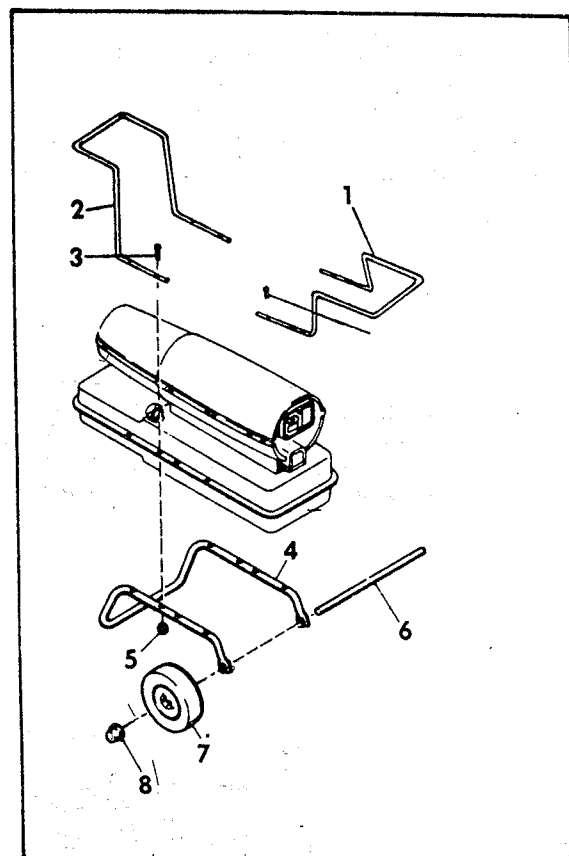


Figure 4. Handles and Wheels

SPECIFICATIONS

Output Rating (BTU per hour)	90,000
Amperage (During normal run)	4.0
Air Pump Pressure (PSI)	4
Weight (Approx. lbs.)	Shipping 79
	Dry (net) 62
Fuel Tank Capacity, U.S. Gallons	9.0
Fuel Consumption, Approx. U.S. Gal. per hour	0.66
Electrical Requirements Voltage	115
	Cycles 60
Motor RPM	3450
Fuel	Kerosene or No. 1 Fuel Oil only
Duct	No Duct Recommended
Relay	115

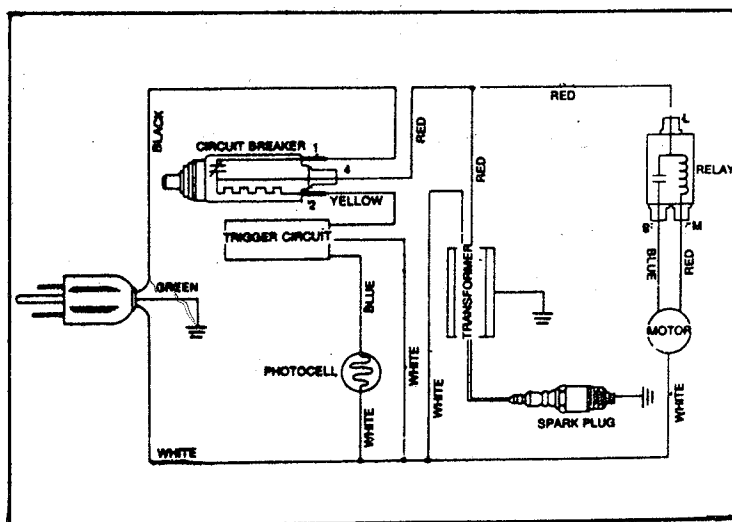


Figure 5. Wiring Diagram

ASSEMBLY INSTRUCTIONS

The Heater Body is shipped assembled. Wheels and Handles are packed separately. Check to see that the following items are included:

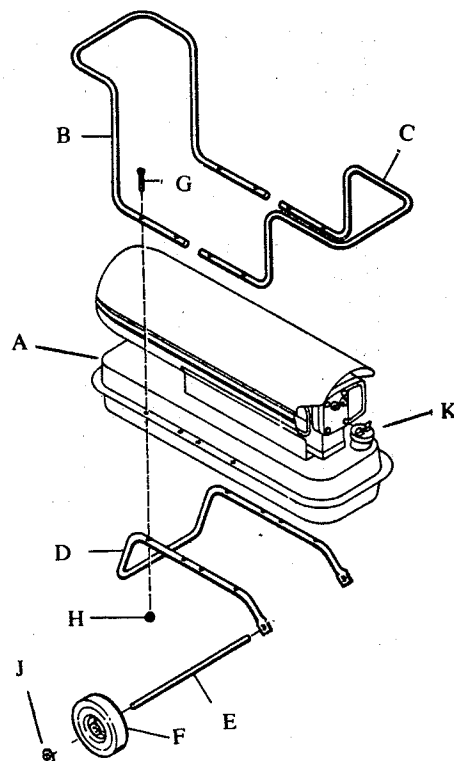
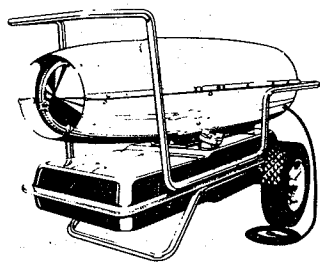
- | | |
|------------------------------------|---------------------|
| 1) Heater Body | 5) 8 ea. 10×24 Nuts |
| 2) Handles and Wheel Support Frame | 6) 2 ea. Cap Nuts |
| 3) 2 ea. Wheels, 1 ea. Axle | 7) 1 ea. Fuel Cap |
| 4) 8 ea. 10×24×1¼" Screws | |

IMPORTANT Screws, Nuts and Cap Nuts are standard hardware items.

TOOLS REQUIRED Medium Phillips Screwdriver, 3/8" Open or Adjustable Wrench, Lightweight Hammer.

A—Heater Body
B—Front Handle
C—Rear Handle
D—Wheel Support Frame
E—Axle

F—Wheel
G—Screw 10×24×1¼"
H—Nut 10×24
J—Cap Nut
K—Fuel Cap



Step 1 - Slide the Axle (E) through the Wheel Support Frame (D). Install Wheels (F) onto the Axle (E); **IMPORTANT** - The Extended hub of the Wheel should be positioned toward the Wheel Support Frame. Position the Cap Nuts (J) on the Axle (E) and tap with hammer.

Step 2 - Position the unit, Motor end over Wheels, on the Wheel Support Frame.

Step 3 - Use Screws (G) and Nuts (H) attach handle (B-C) to Tank flange and Wheel Support Frame. Install all Screws and Nuts before tightening.

Step 4 - Tighten all Nuts.

Step 5 - Install Fuel Cap (K)



KEEP THIS WARRANTY

Model _____

Serial No. _____

Date Purchased _____

Fill in above information for your own record

ALWAYS SPECIFY MODEL AND SERIAL NUMBERS WHEN COMMUNICATING WITH THE FACTORY.

WE RESERVE THE RIGHT TO AMEND THESE SPECIFICATIONS AT ANY TIME WITHOUT NOTICE. THE ONLY WARRANTY APPLICABLE IS OUR STANDARD WRITTEN WARRANTY. WE MAKE NO OTHER WARRANTY, EXPRESSED OR IMPLIED.

LIMITED SIX MONTH WARRANTY (U.S.A.)

Koehring Company warrants this product to be free from defects in materials and workmanship for six months from the date of first purchase when operated and maintained in accordance with instructions.

This warranty covers only the cost of parts and labor required to restore this heater to proper operating condition. Transportation and incidental costs associated with warranty repairs are not reimbursable under this warranty.

Warranty service is available only from authorized dealers or service centers.

This warranty does not cover repairs necessary due to normal wear, misuse, accidents, or lack of proper maintenance. Regular routine maintenance is the responsibility of the owner.

Koehring Company assumes no responsibility for indirect, incidental or consequential damages. Some states do not allow the exclusion or limitation of incidental and consequential damages so the above may not apply to you.

THIS EXPRESS WARRANTY IS GIVEN IN LIEU OF ANY OTHER WARRANTY EITHER EXPRESS OR IMPLIED, INCLUDING WARRANTIES OR MERCHANTABILITY AND FITNESS FOR A PARTICULAR PURPOSE.

This warranty gives you specific legal rights and you may have other rights which vary from state to state.

For information, write: Koehring Atomaster Division, P. O. Box 719, Bowling Green, Kentucky 42101,
Attention: Customer Service Manager.

A4213-06



BUSINESS REPLY MAIL

No Postage Stamp Necessary If Mailed In The United States



KOEHRING.
ATOMASTER DIVISION
BOWLING GREEN, KENTUCKY 42101

FIRST CLASS
PERMIT NO. 521
Bowling Green,
Kentucky 42101

