

**PARTS LIST  
UNIT SPECIFICATIONS  
ASSEMBLY INSTRUCTIONS  
WARRANTY STATEMENT**



**KOEHRING®**  
**ATOMASTER DIVISION**  
BOWLING GREEN, KENTUCKY 42101

When ordering your part, be sure to provide all pertinent facts when you call or visit your service dealer.  
The model and serial number of your portable heater will be found on a decal toward the rear (motor end) of your unit.  
When ordering repair parts always give the following:

A) Part Number                      B) Model Number                      C) Description

NOTE: All painted service parts will be painted a common color of baked enamel finish; these parts may not match your present color—these parts may be repainted if necessary.

Key No.	Part Number	Part Name or Description	Qty.
1	M11084-26	Screw, Hex. hd., 10-12 x 3/8 in.	6
	M30725-03	Upper Shell Assembly	1
2	M17539-9	•Rivet	4
3	M28153	•Handle	1
4	M30724AD	•Shell	1
5	M30883-01	Chamber Assembly, Combustion	1
6	M11084-26	Screw, Hex. hd., 10-12 x 3/8 in.	4
7	M29707-02	Burner Head Assembly	1
8	M29824	•Nut, Special 14MM	1
9	M29835	•Spark Plug	1
10	M16741-18	•Ring, Retainer	1
	M29705-02	•Nozzle, Siphon	1
	M29705-02	•Nozzle Adapter Assembly	1
11	M30875	••Nozzle, Siphon	1
12	M29805	••Adapter, Nozzle	1
13	M29615-01	••Bracket Assembly, Nozzle Adapter	1
14	M10908-1	Screw, Hex. hd., 6-32 x 1/4 in.	2
15	M16656-3	Photocell and Bushing Assembly	1
16	M16660	Bracket, Photocell	1
17	M29652-01	Tubing, Fuel	1
18	M29814-01	Filter Assembly, Fuel	1
19	M10990-3	Bushing, Rubber	1
20	M11084-26	Screw	1
21	M13942-5	Connector, Wire	2
22	M13942-7	Connector, Wire	1
23	1000576	Grommet	2
24	M30884	Fan	1
25	M16841-16	Wire Assembly	1
26	M28898-03	Safety Control Assembly	1
27	M29652-03	Tubing, Airling	1
28	M11084-26	Screw, Hex. hd.	2
29	M16697-02	Transformer Assembly	1
30	NTC-3C	Nut	4
31	M12461-50	Screw	4
32	M29800	Decal, Reset	1
33	M29750-02	Motor Package Assembly	1
33	M29750-02	Motor Package Assembly	1
34	M11084-26	Screw	4
35	M29616	Motor Mounting Bracket	1
36	M11271-6	Nut, Tinnerman	6
37	M11143-1	Bushing, Strain Relief	1
38	M10813-74	Extension Cord Assembly	1
39	M11084-26	Screw	4
	M12250-2	Nut, Tinnerman	4
41	M30763AD	Shell, Lower	1
42	M30715-01	Cap, Fuel	1
43	M30873-01AK	Tank Assembly, Fuel	1
44	M11084-26	Screw, Hex. hd., 10+12 x 3/8 in.	2
45	M30726-AK	Bracket End cover	1
46	M11084-26	Screw, Hex. hd., 10-12 x 3/8 in.	2
47	M31348-01	Assembly Shell Support	1
48	M50238	Spacer, Filter	1
49	M50323	Screen, Filler Neck	1

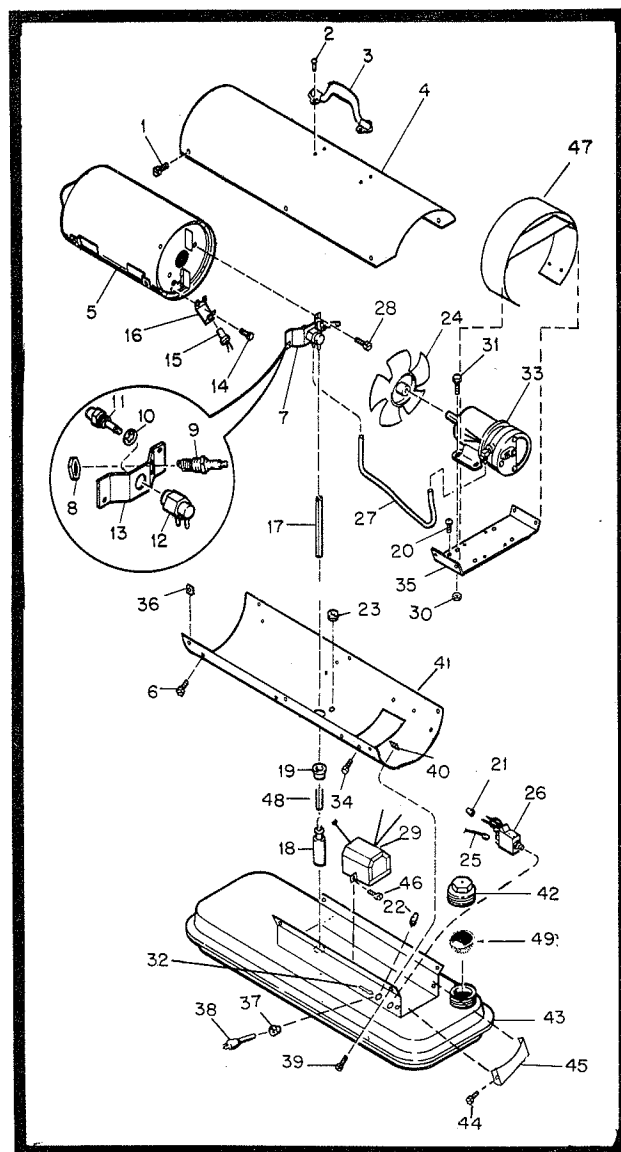


Figure 1, Heater, Exploded View

#### SPECIFICATIONS

Output Rating (BTU per hour)	50,000
Amperage (During normal run)	2.85
Starting	4.00
Air Pump Pressure (PSI)	3.6
Weight (Approx. lbs.) Shipping	.34
Fuel Tank Capacity, U.S. Gallons	3.50
Fuel Consumption, Approx. U.S. Gal. per hour	.036
Electrical Requirements Voltage	115
Cycles	.60
Air Output (CFM)	145
Motor RPM	1675
Fuel	Kerosene or No. 1 Fuel Oil only
Duct	No Duct Recommended

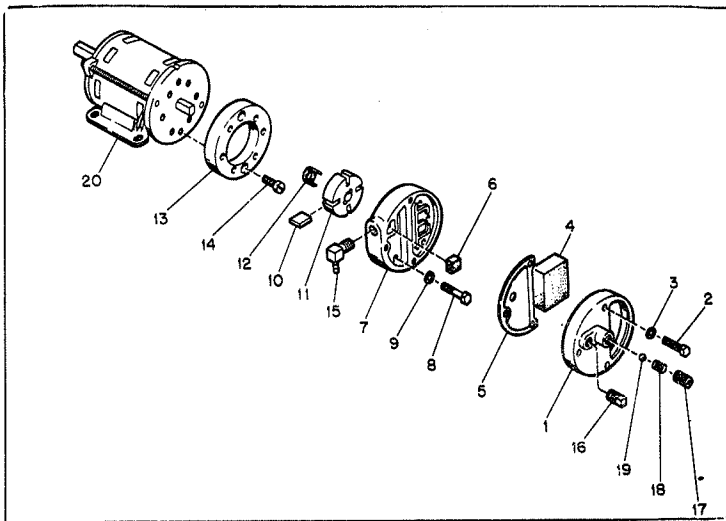


Figure 2. Motor Package Assembly

PARTS AVAILABLE—NOT SHOWN

M	Manual, Instruction Form 4313
M22743	Decal, Warning
M30728	Decal, Wiring Diagram
M29800	Decal, Reset
M20532-8	Decal, Pump Pressure
M31317	Decal, Fuel
M18196	Decal, Mfg. by
M50011	Decal, Spark Plug
M29936	Decal, Trade Name
M22898	Decal, Name Plate

Key No.	Part Number	Part Name or Description	Qty.
1A	M29750-02	Motor Package Assembly	1
1	M29609	•End Cover, Filter	1
2	M12461-31	•Screw (Filter End Cover to Pump End Cover)	3
4	M29633	•Intake Air filter	1
5	M29612-01	•Output Filter Assembly	1
6	M29632	•Filter, Lint	1
7	M29608	•End Cover, Pump (Port Plate)	1
8	M12461-31	•Screw (End Cover to Motor)	6
10	M8643	•Blade	4
11	M22456-1	•Rotor, Pump	1
12	M22009	•Insert, Rotor	1
13	M8645	•Pump Body	1
14	FHPF3-4C	•Screw (Pump Body to Motor)	2
15	M50015	•Elbow	1
16	M22997	•Plug, Socket Hd.	1
17	M27694	•Screw, Pressure Adjustment	1
18	M10993-1	•Spring, Compression (Pressure Relief)	1
19	M8940	•Ball, 1/4 in. dia.	1
20	M30876-01	•Motor	1

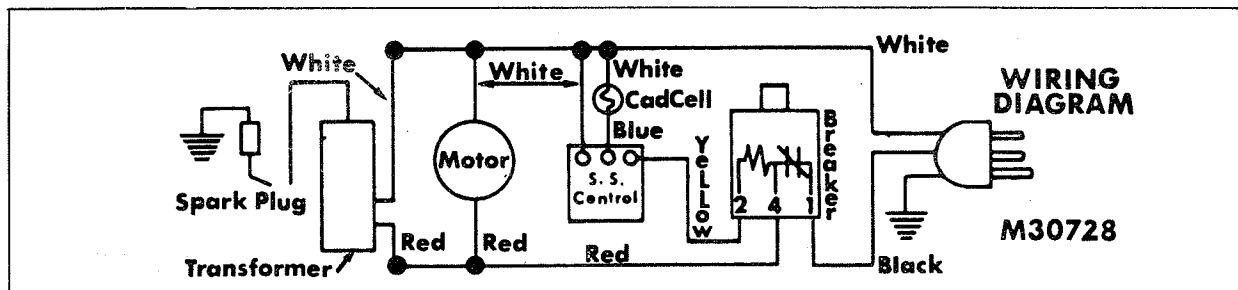


Figure 3. Wiring Diagram

## IMPORTANT

### OWNER'S REGISTRATION

Please complete and return this postage paid card as soon as possible.

SERIAL NO.	<input type="text"/>	MODEL	<input type="text"/>
	1-9		10-15
CUSTOMER NAME	<input type="text"/>		DATE PURCHASED
	24-37		<input type="text"/>
ADDRESS	<input type="text"/>		16-23
	38-51		
<input type="text"/>	<input type="text"/>	<input type="text"/>	
CITY 52-61	STATE 62-63	ZIP 64-68	
MY HEATER WILL BE USED:	<input type="checkbox"/> ON FARM	<input type="checkbox"/> AT HOME	<input type="checkbox"/> IN BUSINESS
	69		
Dealer Name	<input type="text"/>		
Address	<input type="text"/>	<input type="text"/>	<input type="text"/>
	City	State	Zip 70-74
REV. 11/79			75-80

## KEEP THIS WARRANTY

Model \_\_\_\_\_

Serial No. \_\_\_\_\_

Date Purchased \_\_\_\_\_

Fill in above information for your own record

*ALWAYS SPECIFY MODEL AND SERIAL NUMBERS WHEN COMMUNICATING WITH THE FACTORY.*

WE RESERVE THE RIGHT TO AMEND THESE SPECIFICATIONS AT ANY TIME WITHOUT NOTICE. THE ONLY WARRANTY APPLICABLE IS OUR STANDARD WRITTEN WARRANTY. WE MAKE NO OTHER WARRANTY, EXPRESSED OR IMPLIED.

### LIMITED SIX MONTH WARRANTY (U.S.A.)

Koehring Company warrants this product to be free from defects in materials and workmanship for six months from the date of first purchase when operated and maintained in accordance with instructions.

This warranty covers only the cost of parts and labor required to restore this heater to proper operating condition. Transportation and incidental costs associated with warranty repairs are not reimbursable under this warranty.

Warranty service is available only from authorized dealers or service centers.

This warranty does not cover repairs necessary due to normal wear, misuse, accidents, or lack of proper maintenance. Regular routine maintenance is the responsibility of the owner.

Koehring Company assumes no responsibility for indirect, incidental or consequential damages. Some states do not allow the exclusion or limitation of incidental and consequential damages so the above may not apply to you.

THIS EXPRESS WARRANTY IS GIVEN IN LIEU OF ANY OTHER WARRANTY EITHER EXPRESS OR IMPLIED, INCLUDING WARRANTIES OR MERCHANTABILITY AND FITNESS FOR A PARTICULAR PURPOSE.

This warranty gives you specific legal rights and you may have other rights which vary from state to state.

For information, write: Koehring Atomaster Division, P. O. Box 719, Bowling Green, Kentucky 42101,  
Attention: Customer Service Manager.

A4213-06



#### BUSINESS REPLY MAIL

No Postage Stamp Necessary If Mailed In The United States



**KOEHRING**  
ATOMASTER DIVISION  
BOWLING GREEN, KENTUCKY 42101

FIRST CLASS  
PERMIT NO. 521  
Bowling Green,  
Kentucky 42101

