

PARTS MANUAL FOR OIL LUBRICATED AIR COMPRESSOR

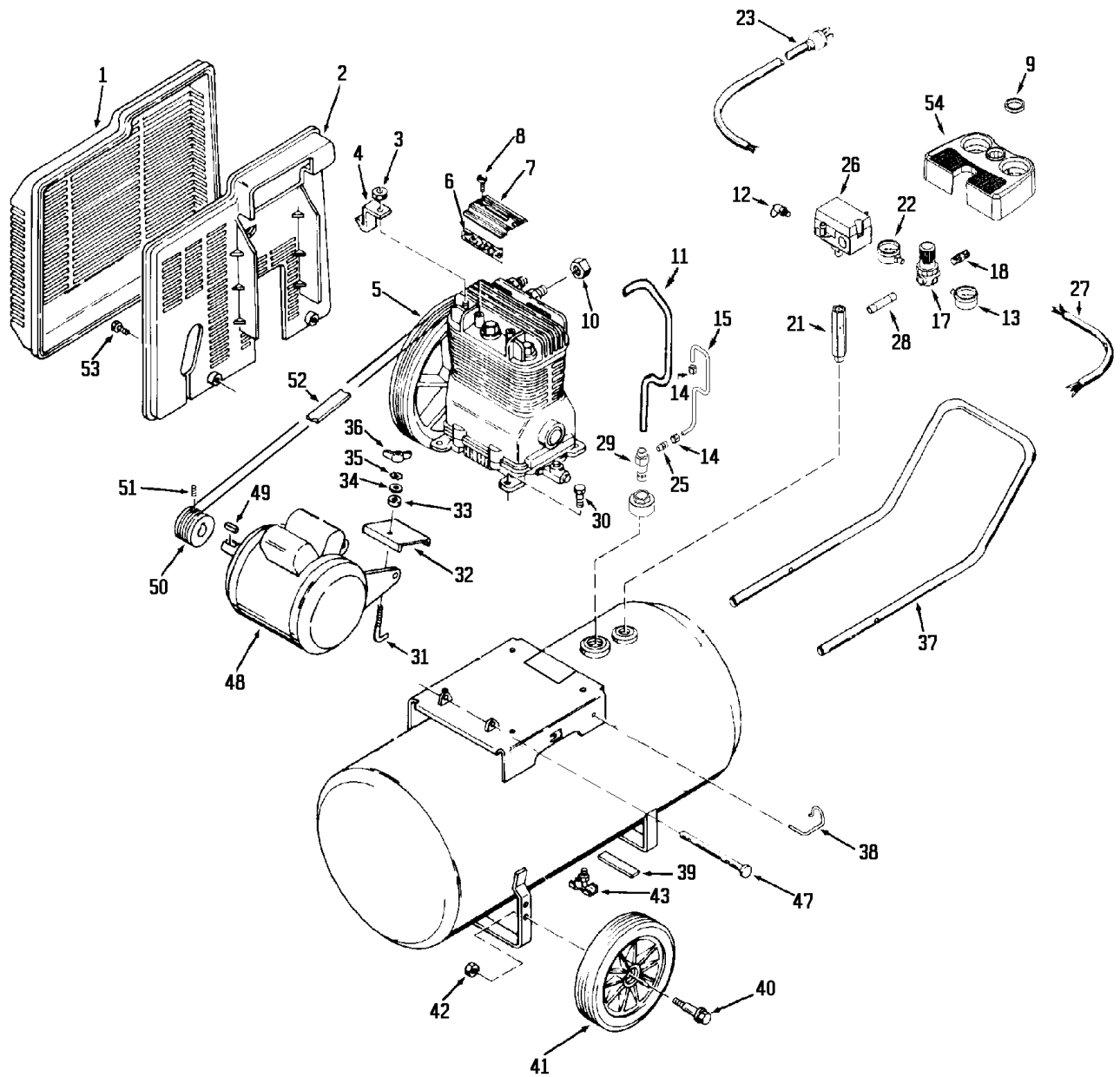
MODEL NO.
L530

SPECIFICATION CHART

Model No.	L520-2	LC520-1
Horsepower	5	—
Bore	2 7/8"	2 7/8"
Stroke	2"	2"
Voltage-Single Phase	240	240
Minimum Branch Circuit Requirement	15 amp	15 amp
*Fuse Type	Fusetron Type "T"	Fusetron Type "T"
Air Tank Capacity	20 gal. ASME	20 gal. ASME
Approximate Cut-in Pressure	100 PSIG	100 PSIG
Approximate Cut-out Pressure	125 PSIG	125 PSIG
SCFM @ 90 psig	10.2	10.2
SCFM @ 40 psig	12.2	12.2
U.L. Listed	Yes	Yes

*A circuit breaker is preferred. Use only a fuse or circuit breaker that is the same rating as the branch circuit the air compressor is operated on. If the air compressor is connected to a circuit protected by fuses, use dual element time delay fuses (Buss Fusetron Type "T" only).

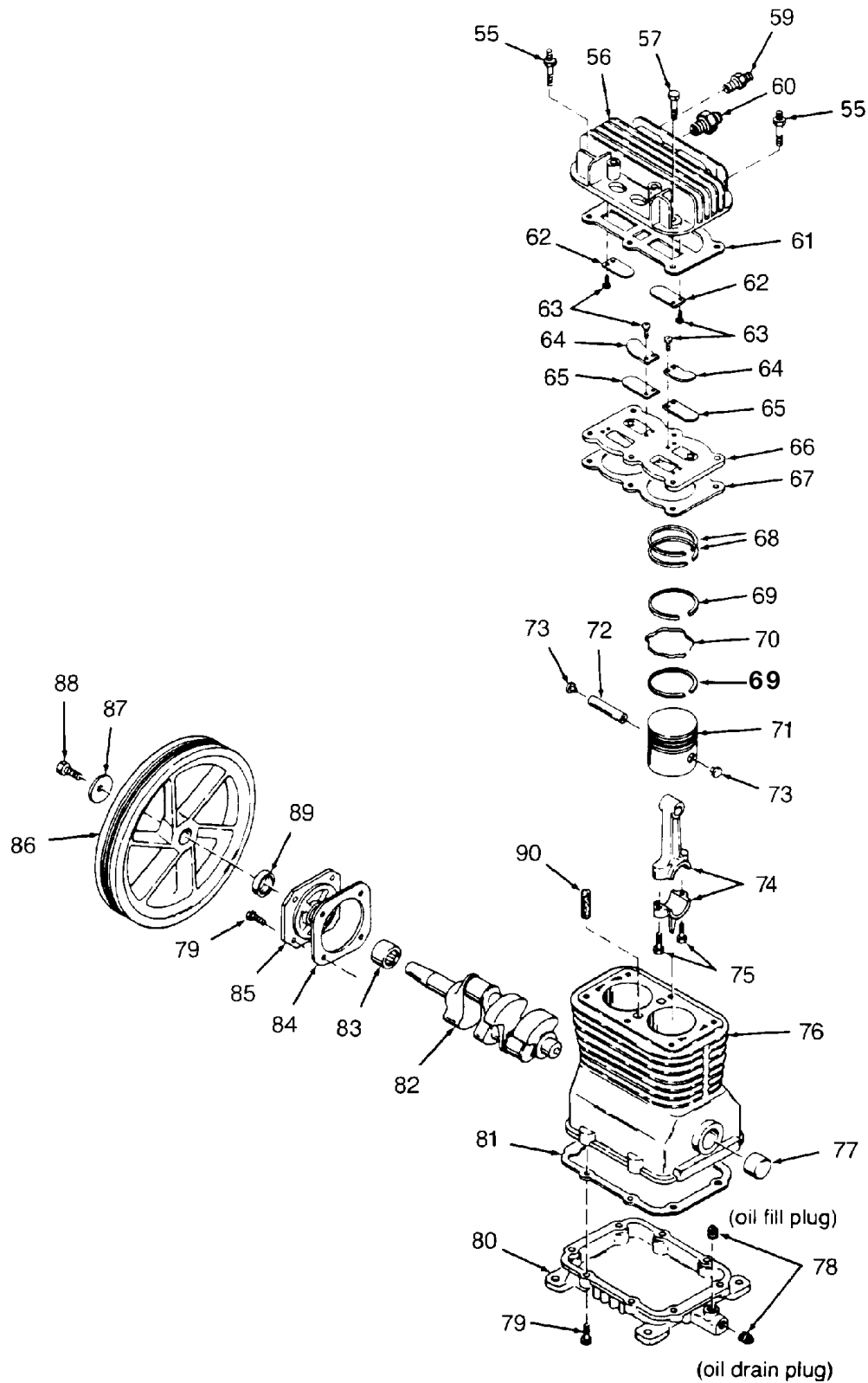
Air Compressor Diagram



Parts List

KEY NO.	PART NUMBER	DESCRIPTION
1	CAC-322	Belt guard, outside
2	CAC-323	Belt guard, inside
3	SSF-8113-ZN	Lock nut
4	CAC-327	Bracket
5	CAC-4029	Compressor Pump Assy.
✓6	265-17	Intake filter
7	265-18	Filter Retainer
8	SSF-935	Screw, #8-32 x 3/8" (2 used)
9	CAC-61	Ring, Panel Mounting
10	SSP-7812	Nut Sleeve Assy. 1/2" (2 used)
11	AC-0041	Outlet Tube
12	97503734	Safety Valve ASME
13	AC-0010	Gauge, LT Hand
14	SSP-7811	Nut Sleeve Assy. 1/4" (2 used)
15	AC-0028	Pressure Release Tube
17	AC-0007	Pressure Regulator
18	H-2101	Adapter
21	AC-0027	Manifold
22	AC-0009	Gauge, RT Hand
23	DAC-187	Cord Assembly
25	SS-8553	Connector Body
26	AC-0008-1	Pressure Switch Assembly
27	CAC-4215-1	Motor Cord Assembly
28	SSP-480	Nipple
29	CAC-4337	Check Valve
30	SSF-928	Screw 5/16"-18 x 7/8" (4 used)
31	CAC-1013	Hold-down Screw
32	CAC-1012	Hold-down Plate
33	CAC-1011	Elastomer Spring
34	SSN-56-ZN	Washer
35	SSN-1619-ZN	Lockwasher
36	SS-2038-ZN	Wing Nut
37	CAC-320-1	Handle
38	CAC-1059	Retaining Clip (2 used)
39	SUDL-6-1	Rubber Foot Strip
40	CAC-60	Shoulder Bolt (2 used)
41	AC-0014	9" Wheel (2 used)
42	SSF-8080-ZN	Nut (2 used)
43	SS-2707	Drain cock
47	CAC-287	Motor pin
48	MO-3013-1	Motor
49	SUDL-65	Motor shaft key (3/16" x 3/16" x 1 1/4")
50	C-PU-2861	Motor pulley
51	SS-391	Set screw
52	C-BT-223	Poly-V-Belt, 39" long
53	SSF-986	Self-tapping screw (2 used)
54	AC-0011	Console Cover

Compressor Pump Diagram



Parts List

KEY NO.	PART NUMBER	DESCRIPTION
55	SSF-6627	Stud 3/8"-16 both ends (1 used)
56	CAC-4213	Head assembly (includes valves and screws)
57	SSF-955	Screw, 3/8"-16 x 1 1/2" (5 used)
59	SS-1215	Connector Body
60	SSP-9401	Adapter
✓ 61	CAC-291-1	Head gasket
● 62	---	Intake flapper valve - square corners (2 used on head)
● 63	---	Screw #5-40 x 1/4" (8 used)
64	CAC-294	Restrictor plate (2 used)
● 65	---	Exhaust flapper valve - beveled corners (2 used on valve plate)
66	CAC-4212	Valve plate assembly (includes valves, restrictors and screws)
✓ 67	CAC-1265-2	Valve plate gasket
X 68	---	Compression ring (4 used)
X 69	---	Oil ring (4 used)
X 70	---	Oil ring expander (2 used)
71	CAC-55-1	Piston (2 used)
72	265-19	Piston pin (2 used)
73	CAC-207	Piston pin plug (4 used)
74	265-410	Connecting rod assembly (2 used) Includes (2) SSF-927 screws (Key #75)
75	SSF-927	Screw, 1/4-20 x 1 1/8" (4 used)
76	CAC-51	Crankcase and cylinder
77	265-41	Needle bearing
78	SSP-486	Pipe plug (2 used)
79	SSF-925	Screw, 1/4"-20 x 7/8" (12 used)
80	DAC-276	Base
✓ 81	265-16-1	Base gasket
82	CAC-373	Crankshaft
83	265-23	Needle bearing
✓ 84	265-13	End plate gasket
85	265-9	End plate
86	265-2	Flywheel
87	SSN-1014-ZN	Belleville washer
88	SSF-3039-ZN	Cap screw
✓ 89	265-111	Seal
✓ 90	---	Vent filter
NOT ILLUSTRATED		
	KK-4315	Pressure Relief Valve Kit
	SSH-20	Air chuck
	H-7038	Air hose assembly

X Key No.68, 69 and 70 only available as part of Ring Kit KK-4313.

✓ Key No. 6, 61, 67, 81, 84, 89 and 90 available as individual parts or part of Gasket Kit KK-4312-2.

● Key No. 62, 63 and 65 only available in Valve Kit KK-4275.

Recommended Oils - One Stage Compressor Units

Use a compressor oil such as SAE 20-20W SF motor oil. (Crankcase oil capacity is 16 fluid ounces.) Under extreme winter conditions use 10 weight oil. Multiviscosity oil, 10W30, will leave carbon deposits on critical components, reducing performance and compressor life.