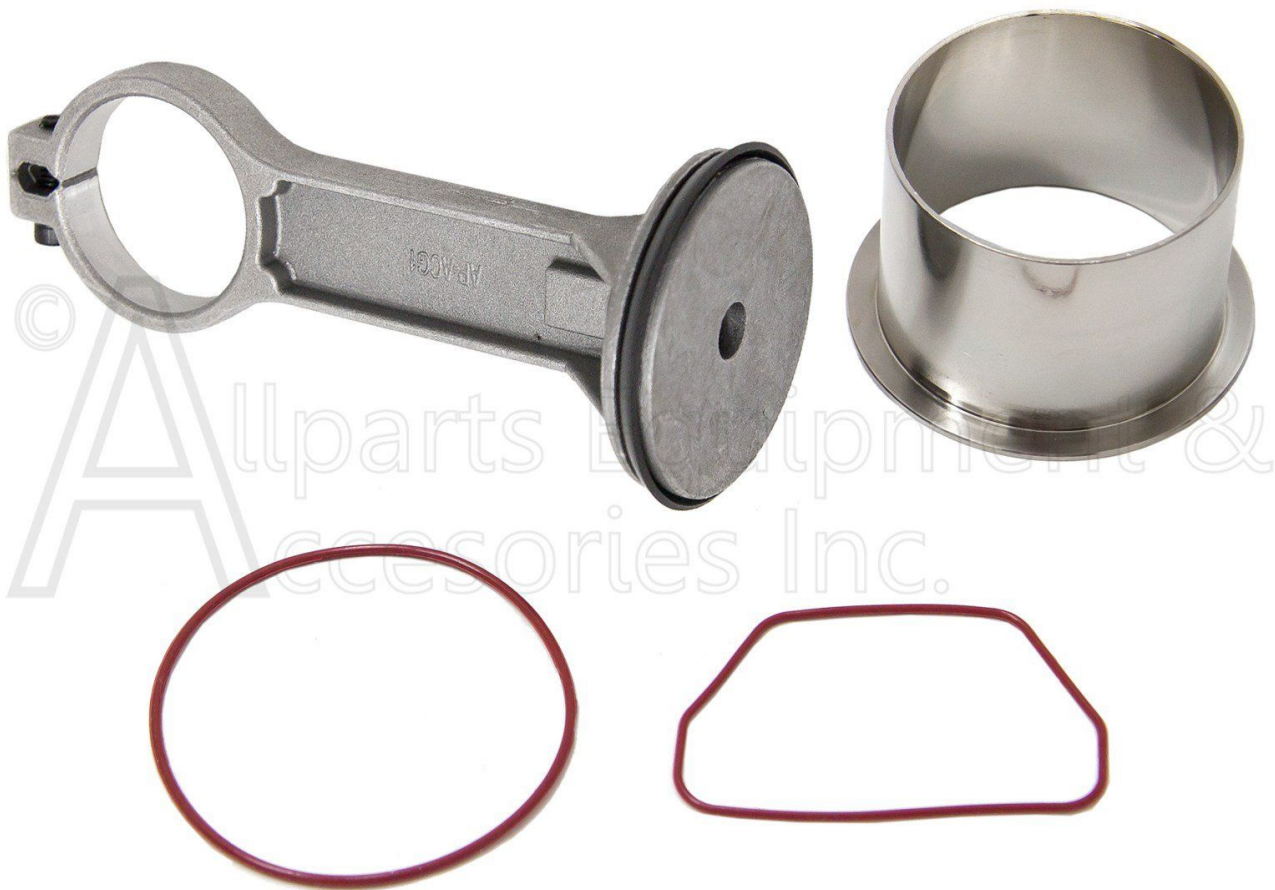


KK-4835

Service Instructions



FOR QUESTIONS AND CONCERNS, CONTACT US AT

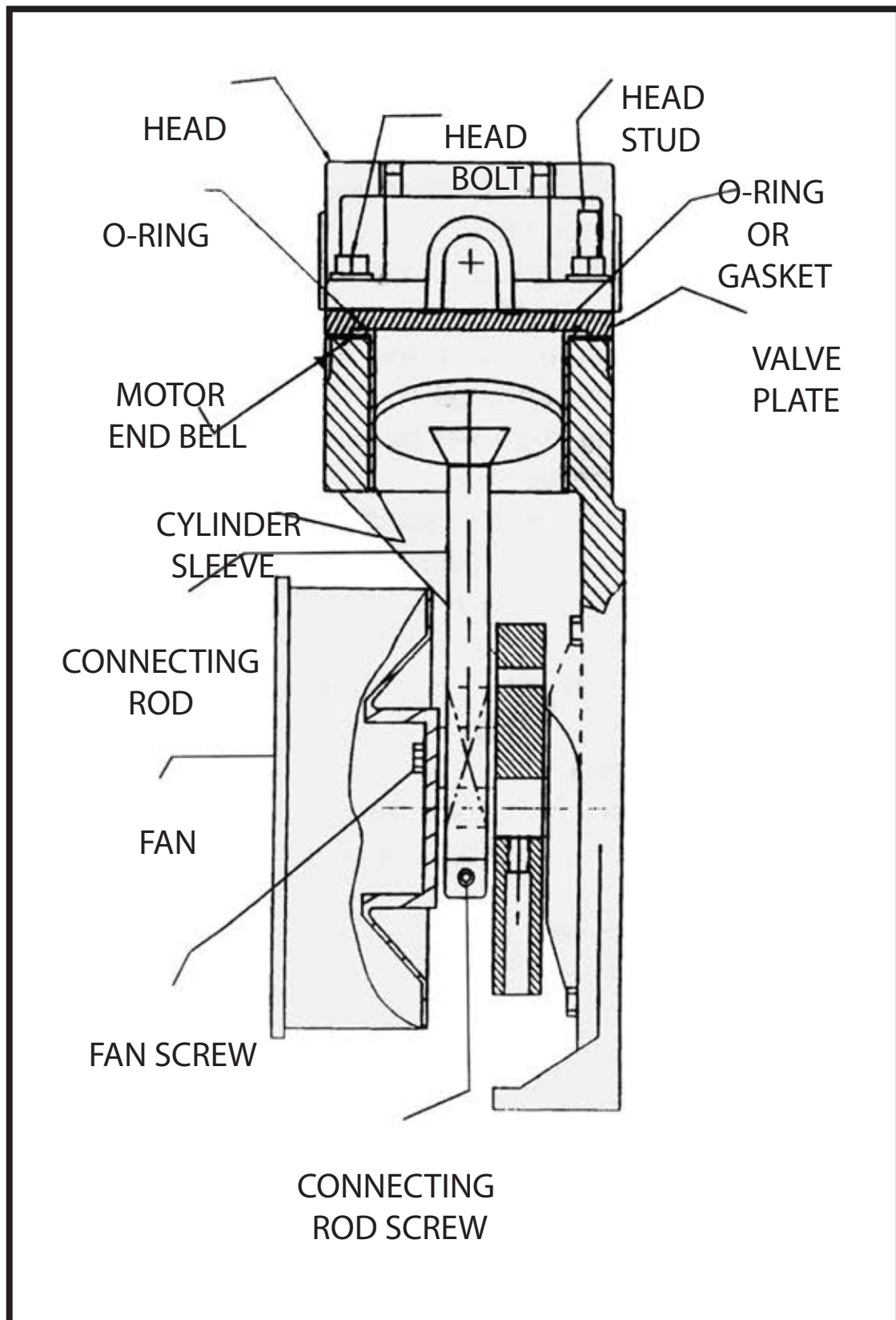
Allparts Equipment &
Accessories Inc.

www.allpartsinc.com

Call Us: 1-269-685-4123

Text Us: 1-269-447-0412

SERVICE INSTRUCTIONS FOR REPLACING A **KK-4835** CONNECTING ROD KIT



m

This Kit Includes The Following Parts:

<u>QTY.</u>	<u>DESCRIPTION</u>
1	Cylinder Sleeve
1	Connecting Rod Assy.
2	O-Rings

1. Remove head bolts and head studs.
2. Remove head and valve plate.
3. Remove fan screw and fan.
4. Loosen connecting rod screw and pull connecting rod outward off bearing.
5. Remove connecting rod and cylinder sleeve through the top of the end bell.
6. Place new connecting rod and cylinder sleeve down through top of the end bell.
7. Place connecting rod over bearing, with the connection rod flush with the bearing outer edge.
8. **NOTE!!** Torque connecting rod screw **30-45 INCH LBS. MAXIMUM.**
9. Place connecting rod in the down position. (This will pull down the cylinder sleeve while replacing the valve plate.)
10. Replace o-rings in valve plate if needed.
11. Place valve plate over cylinder sleeve. (Make sure o-ring is in place.)
12. Place head over valve plate, make sure gasket or o-ring (whichever is used) is in good condition and in the proper place.
13. **NOTE!!** Place head bolts and head studs back in the holes they were removed from. Tighten in a criss-cross pattern **84-120 INCH LBS MAXIMUM.**
14. Replace fan. Line up hole configuration on the fan hub with the identical shape on the eccentric. Be sure of alignment.
15. Insert screw into washer and screw into place.

NOTE!! TORQUE: 1/4 screw **45-60 INCH LBS. MAXIMUM**

 #10 screw **30-45 INCH LBS. MAXIMUM**

 For Squirrel Cage Fan **70-95 INCH LBS. MAXIMUM**