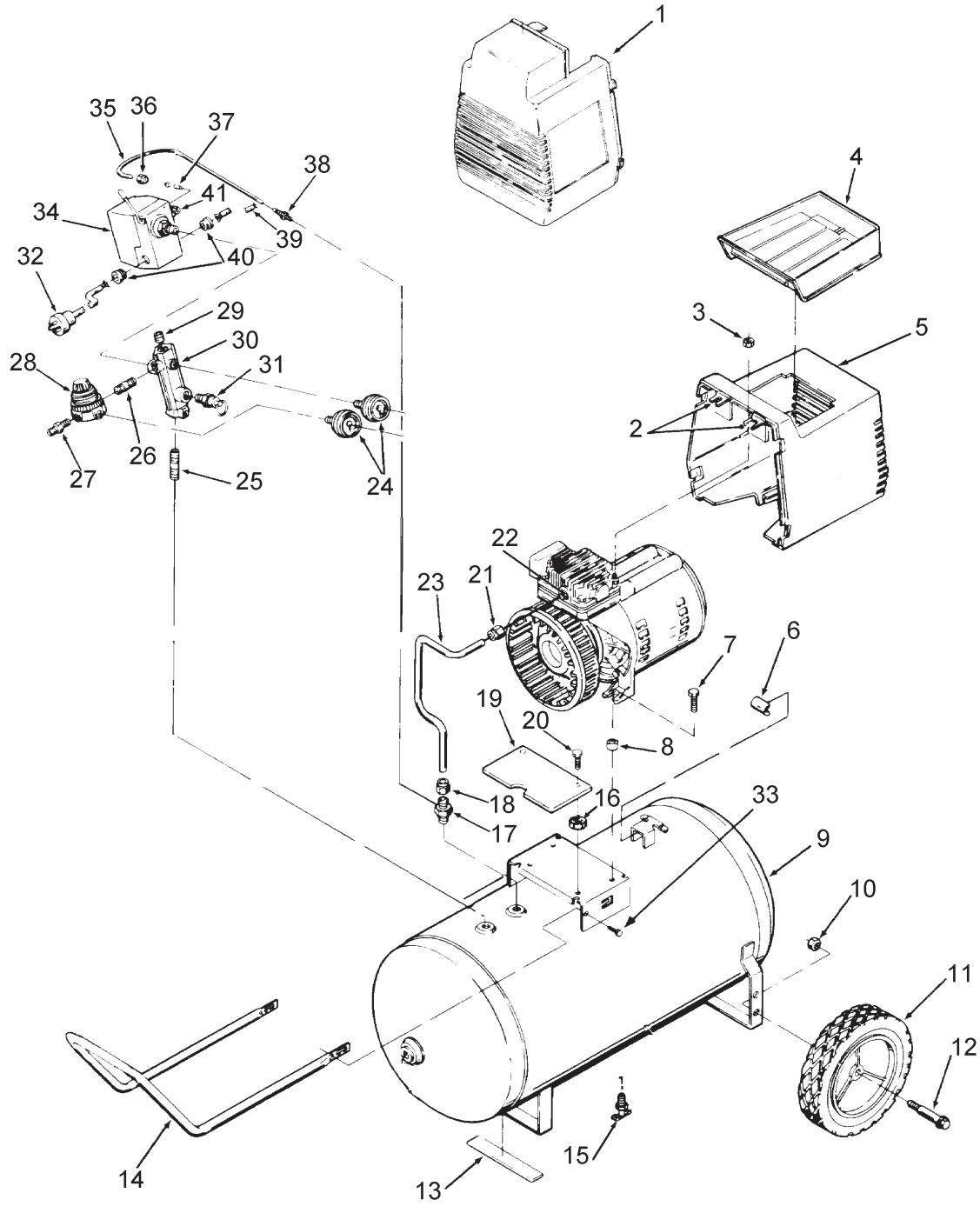


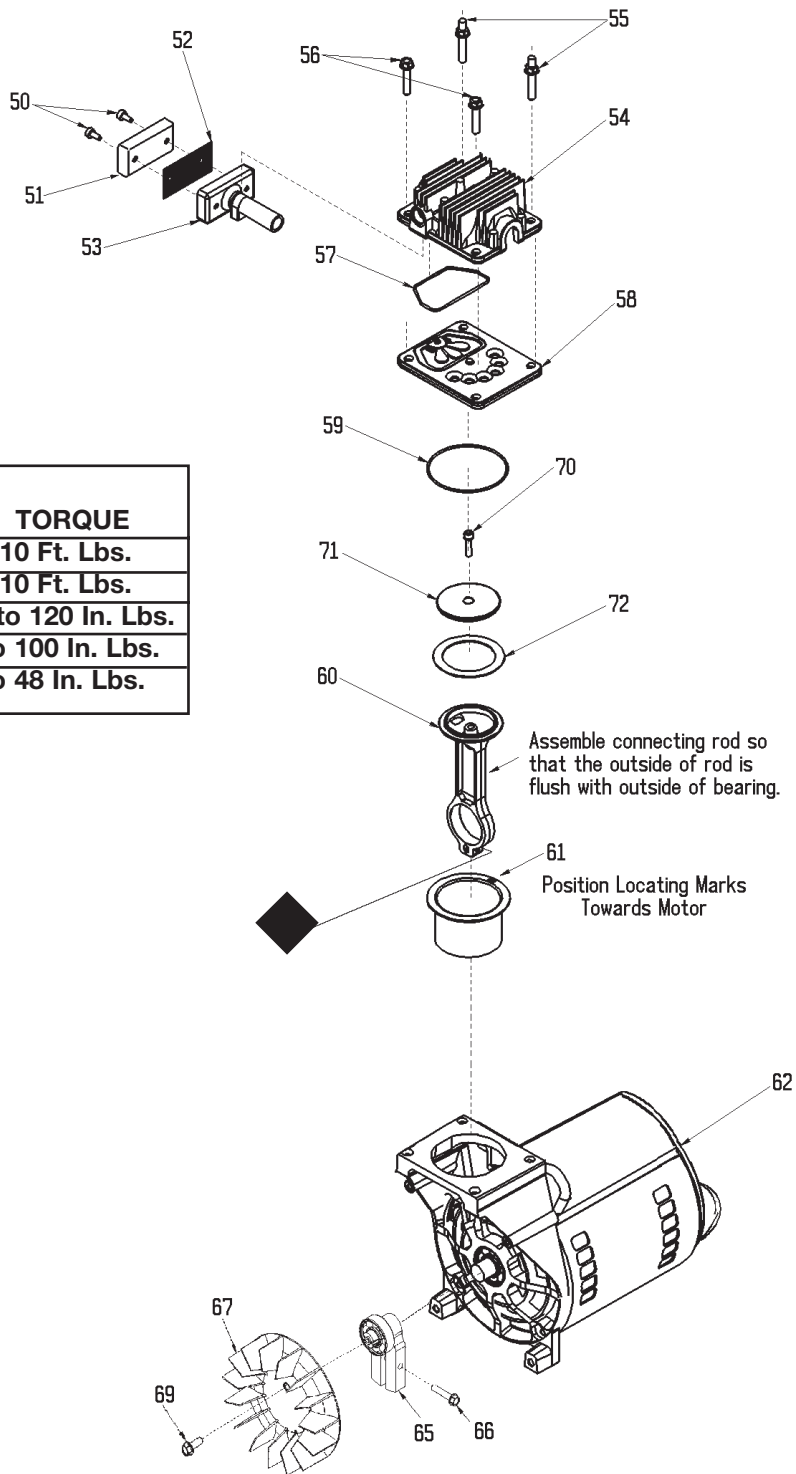
# IRFC420





# F420-2

## FC420-1(cont'd)



KEY NO.	TORQUE
55	7 to 10 Ft. Lbs.
56	7 to 10 Ft. Lbs.
66	100 to 120 In. Lbs.
69	80 to 100 In. Lbs.
◆	42 to 48 In. Lbs.

Assemble connecting rod so that the outside of rod is flush with outside of bearing.

Position Locating Marks Towards Motor

# F420-2

## FC420-1(cont'd)

KEY	<u>NO.</u>	<u>PART NUMBER</u>	<u>DESCRIPTION</u>
	+ 50	---	Air filter fastener (2 used)
	+ 51	DAC-143	Air filter
	+ 52	---	Muffler screen
	+ 53	---	Intake muffler
	54	AC-0037	Head
	55	SSF-589	Stud 1/4"-20 x 1 1/4"
	56	SSF-927	Screw 1/4-20 x 1 1/4"
	*✓ 57	ACG-45	O-Ring
	58	AC-0032	Valve plate assembly (includes valves, restrictors & screws)
	*✓ 59	SSG-8156	O-ring
	* 60	---	Connecting rod assembly
	*✓ 61	---	Cylinder sleeve (position locating mark toward motor)
	62	MO-9045	Motor
	65	AC-0140	Eccentric Flywheel Bearing Assy.
	66	SSF-615	Screw 1/4-20 unc-2A
	67	AC-0108	Fan
	69	SSF-586	Screw 1/4-20 unc x .75
	*✓ 70	SSF-3158-1	Screw 10-24 X .75 T25 Torx
	* 71	---	Compression Ring Connecting Rod Cap
	*✓ 72	---	Compression Ring

### **NOT ILLUSTRATED**

H-7038	Air Hose
SSH-20	Air Chuck
H-7040-1	Air Hose
KK-4315	Pressure Relief Valve
D26368	Owners Manual (F420-2 & FC420-1)
MP2-F420-2	Parts Manual
MP2-F420-1	Parts Manual

- \* Keys 57, 59, 60, 61, 70, 71 and 72 can only be purchased as part of KK-4835 Connecting Rod Kit.
- + Keys 50, 51, 52 and 53 can only be purchased as part of KK-4981.
- ✓ Keys 57, 59, 61, 70 and 72 can be purchased as part of K-0058 Cylinder Sleeve/Compression Ring Kit.