

# PARTS MANUAL FOR COMPACT AIR COMPRESSOR

MODEL NO.  
**IRC1D-1**



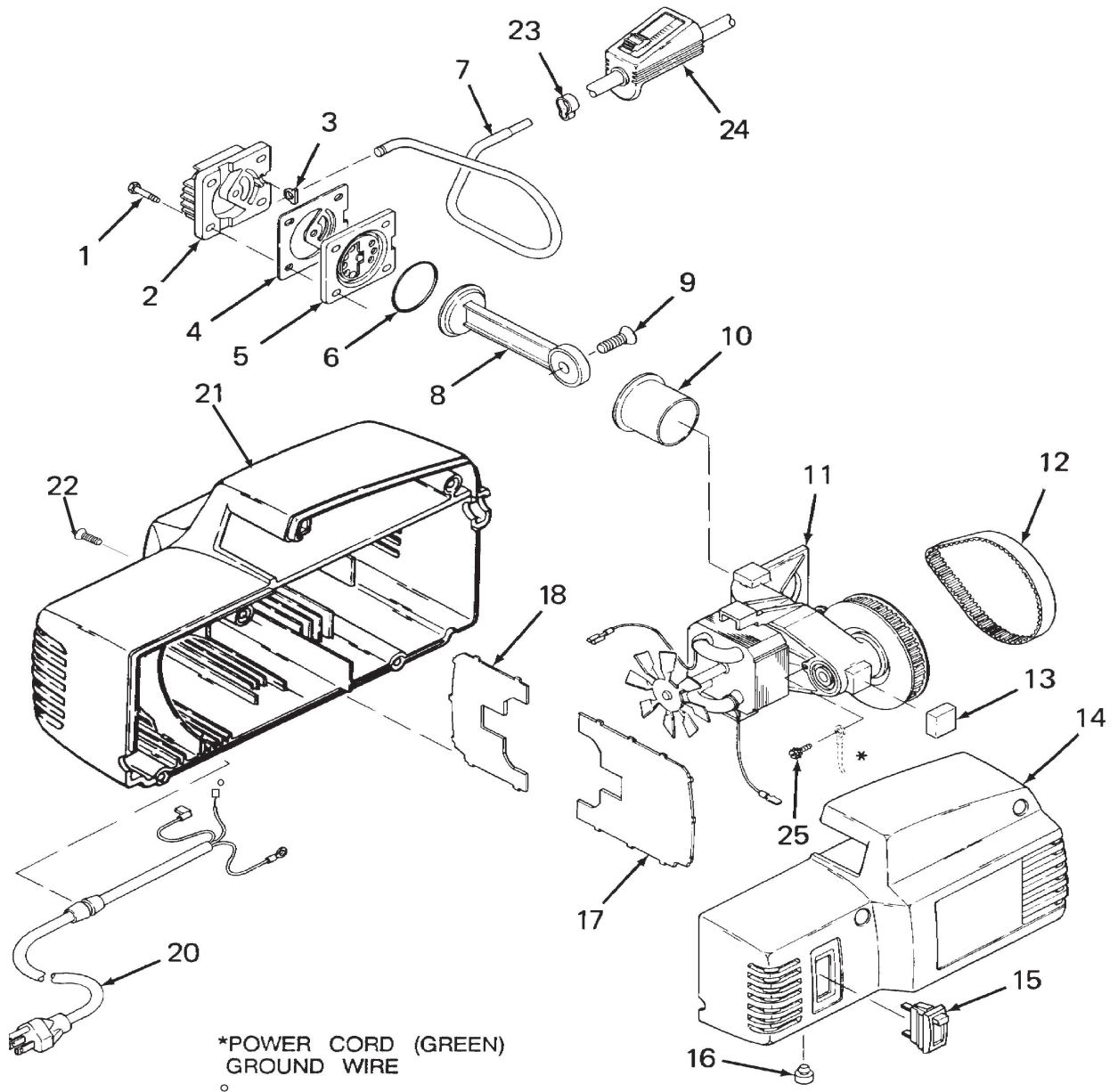
## SPECIFICATION CHART

---

Model No.	WB-100D-1
Horsepower	3/4
SCFM @ 40 psig	3.0
SCFM @ 90 psig	2.2
Displacement CFM	4.0
Bore	1 3/4"
Stroke	1 1/4"
Voltage-SinglePhase	110/120
Minimum Branch Circuit Requirement	15 AMPS
Fuse Type	Quick Acting
Amperage at Max. Pressure	10

DeVilbiss Air Power Company, 213 Industrial Dr., Jackson, TN 38301-9615

# AIR COMPRESSOR DIAGRAM



# PARTS LIST

KEY	NO.	PART NUMBER	DESCRIPTION
X	1	-----	Screw #10-24 x 7/8 LG. hex head thd forming (4 used)
	2	CAC-1196	Cylinder head
*	3	-----	Tube seal
*	4	-----	Head gasket
	5	CAC-4323	Valve plate assembly
*	6	-----	"O" ring
	7	CAC-1194-1	Outlet tube
●	8	-----	Rod assembly
X	9	-----	Screw 3/8-16 x 1.25 LG. hex socket flat head
●	10	-----	Cylinder sleeve
	11	CAC-4111	Endbell assembly
	12	CAC-1342	Timing belt
*	13	-----	Pump isolator
	14	DAC-163	Shroud (right)
	15	SSS-16	Switch
*	16	-----	Housing isolator
+	17	-----	Motor baffle (right)
+	18	-----	Motor baffle (left)
	20	CAC-4322-1	Cord assembly
	21	DAC-162	Shroud (left)
X	22	-----	Screw #10-9 x 1/2 LG. Phillips head thd forming (4 used)
	23	CAC-1206	Clamp
	24	CAC-4324	Pressure valve assembly
X	25	-----	Screws, ground #8-32 x 3/8 LG. Slotted hex head, thd forming

\* KK-4930 Isolator Kit includes items 3, 4, 6, 13, 16.

X KK-4929 Fastener Kit includes items 1, 9, 22, 25.

+ KK-4980 Baffle Kit includes items, 17, 18.

● KK-4926 Connecting Rod Kit includes items 8, 10.