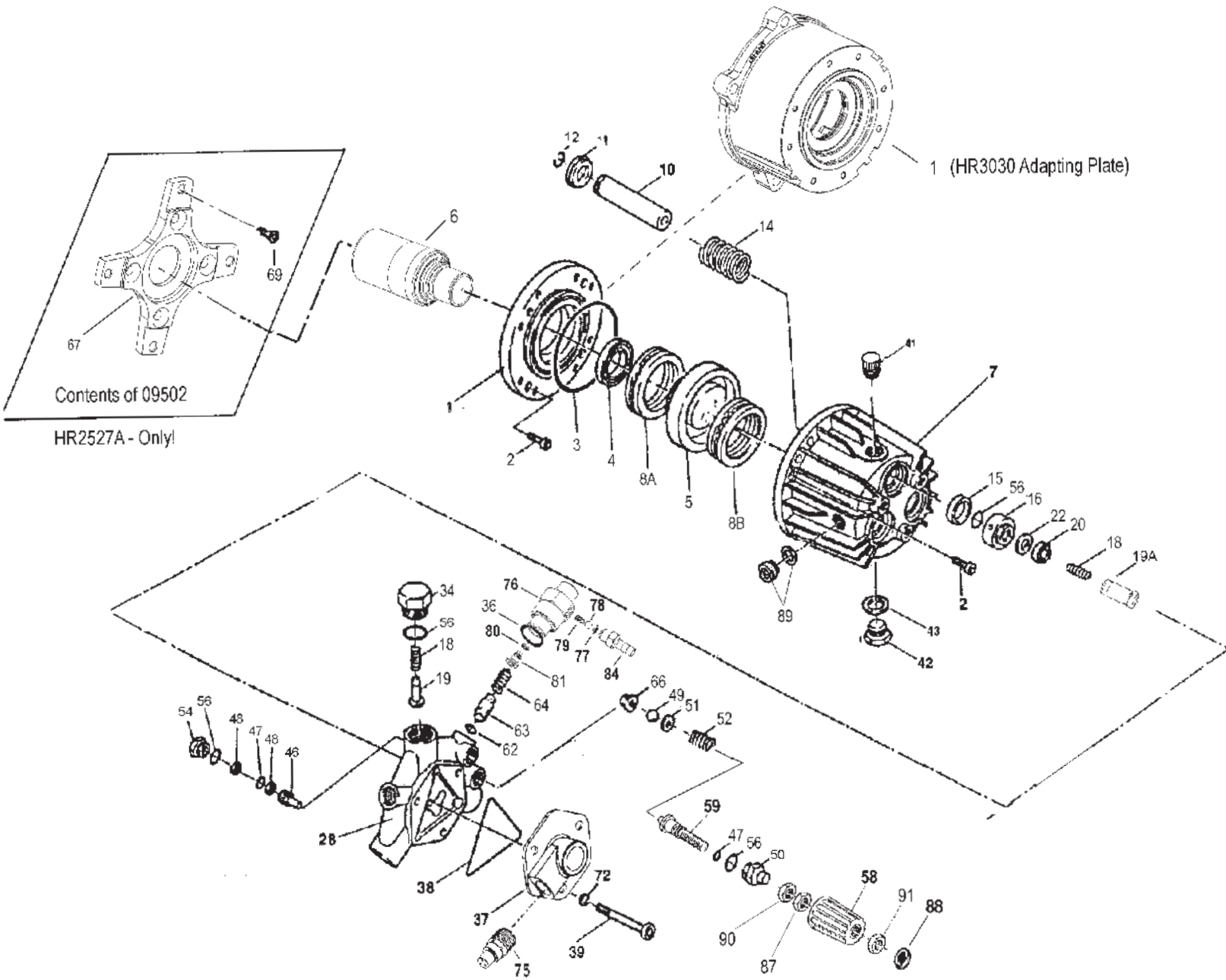


HR2020/HR2527A/HR3025/HR3030 EXPLODED VIEW



HR2020/HR2527A/HR3025/HR3030 PARTS LIST

ITEM	PART #	DESCRIPTION	QTY.	ITEM	PART #	DESCRIPTION	QTY.
1*	07874	Adapting Plate (HR2020)	1	43	08192	Gasket	1
1*	06311	Adapting Plate (HR2527A/HR3025)	1	46	06423	Piston	1
1*	06403	Adapting Plate (HR3030)	1	47	07937	O-Ring	2
2	07881A	Socket Head Cap Screw 1/4"	8	48	12031-0002	Back-Up Ring	2
3	07344	O-Ring	1	49	06227	Ball, By Pass Valve	1
4	07805	Radial Shaft Seal	1	50	06324	Adjusting Plug	1
5**	07947	4.8° Wobble Plate (HR2020)	1	51	07917A	Washer	1
5**	06419	7.1° Piece Wobble Plate (HR2527A)	1	52	06608	Adjusting Spring	1
5**	06402	8° Wobble Plate (HR3025/HR3030)	1	54	06239	Guide Plug	1
6	06393	Steel Shaft 3/4" (HR2527A/HR3025)	1	56	12007	O-Ring	8
6	06401	Steel Shaft 1" (HR3030)	1	58	07045	Handwheel	1
7	08089	Crankcase	1	59	06524	Adjusting Screw	1
8A*	06264	Rear Bearing , Complete (HR2020 only)	1	62	12326	O-Ring	1
8A*	06300	Rear Bearing, Complete (except HR2020)	1	63	12325	Kick-Back Valve Cone	1
8B**	07930A	Front Bearing, Complete (HR2020 only)	1	64	12328	Kick-Back Valve Spring	1
8B**	06301	Front Bearing, Complete (except HR2020)	1	66	07935A	By Pass Valve Seat	1
10	06319	Plunger	3	67+	06414	Mounting Flange "X" Style (HR2527)	1
11	06318	Spring Disc Retainer	3	69+	07467	Bolt(HR2527)	4
12	06291	Clip Ring	3	72	06224	Washer	3
14	07873	Plunger Spring	3	75	23422A	Thermal Valve	1
15	06316	Oil Seal	3	76	06303	Injector Retainer	1
16	06317	Spacer Ring	3	77	12516-001	O-Ring Viton	1
18	07374	Valve Spring	6	78	23010-0100	Ball, 7/32" Dia. ss	1
19	06295	Valve Cone (Discharge)	3	79	23009	Spring, Injector	1
19A	06267	Valve Cone (Inlet)	3	80	06312	O-Ring	1
20	06315	V-Sleeve	3	81 ^A	06308 ^A	Oriface, 1.8mm	1
22	06290	Pressure Ring	3	81 ^A	06339 ^A	Oriface, 2.1mm	1
28	06424	Manifold	1	81 ^A	06340 ^A	Oriface, 2.3mm	1
34	07379	Manifold Plug	3	84	12517	Hose Barb	1
36	07913	O-Ring	1	87	07044	Locknut	3
37	06313	Suction Flange	1	88	07046	Cover	1
38	07910A	O-Ring, Flange	1	89	08250	Sightglass w/gasket	1
39	06320	Stud Bolt	3	90	07939	Nut	1
41	08083	Oil Fill Cap	1	91	07068	Locknut w/Nylon Insert	1
42	06273	Oil Drain Plug	1				

+ 09502 Gasoline Flange kit
^A = See pump numbering system or page 8

- * When ordering a 07847, please order 17014, which includes 07847, 07344, 07805, 06264 - HR2020
- * When ordering a 06311, please order 17021 which includes 06311, 07344, 07805, 06300 - HR2527A/HR3025
- * When ordering a 06403, please order 17038 which includes 06403, 07344, 07805, 06300 - HR3030

- ** When ordering 07947 please order 17009, which includes 07947 and 07930A - HR2020
- ** When ordering 06419, please order 17036, which includes 06419, 06393, & 06301 - HR2527A
- ** When ordering 06402, please order 17051, which includes 06402, 06393 & 06301 - HR3025

HR2020/HR2527A/HR3025/HR3030 Repair Kits

Plunger Packing Kit # 09465

Item	Part #	Description	Qty.
22	06290	Pressure Ring	3
20	06315	V-Sleeve	3

Unloader Repair Kit # 09235

Item	Part #	Description	Qty.
36	07913	O-Ring	1
47	07937	O-Ring, Adjusting Screw	2
48	12031-0002	Teflon Back-Up Ring	2
49	06227	8mm Ball	1
56	12007	O-Ring	2
62	12326	O-Ring	1
66	07935A	By Pass Seat	1

Valve Assembly Kit # 09475

Item	Part #	Description	Qty.
18	07374	Valve Spring	6
19A	06267	Guided P-Valve	3
19	06295	Discharge Valve Cone	3

Oil Seal Kit # 09468

Item	Part #	Description	Qty.
15	06316	Plunger Oil Seal	3

HR2020/HR2527A/HR3025/HR3030 SERIES TORQUE SPECIFICATIONS

Position	Item#	Description	Torque Amount (ft.-lbs)
2	07881A	Socket Head Cap Screw 1/4"	100 in-lbs.
39	06320	Stud Bolt	360 in-lbs.

GX and HR Pump Part Numbering System

GX or HR Series	Flow	Pressure (in 100 psi increments)		Injector Size	Thermal Relief Valve	Wobble Plate Shaft Bore
Vertical	20=GPM	25=2500 PSI		1=2.1 mm	1=1/2"	1=3/4"
Horizontal	23=GPM			2=1.8mm		2=7/8"
	25=GPM			3=2.3mm		3=1"
GX or HR	2.5	25	-	1	1	1

For example, a GXV2525-112 is a GX pump that produces 2.5 GPM @ 2500 PSI, has a injector with a 2.1mm Oriface, 1/2" thermal relief valve and 7/8" wobble plate bore.