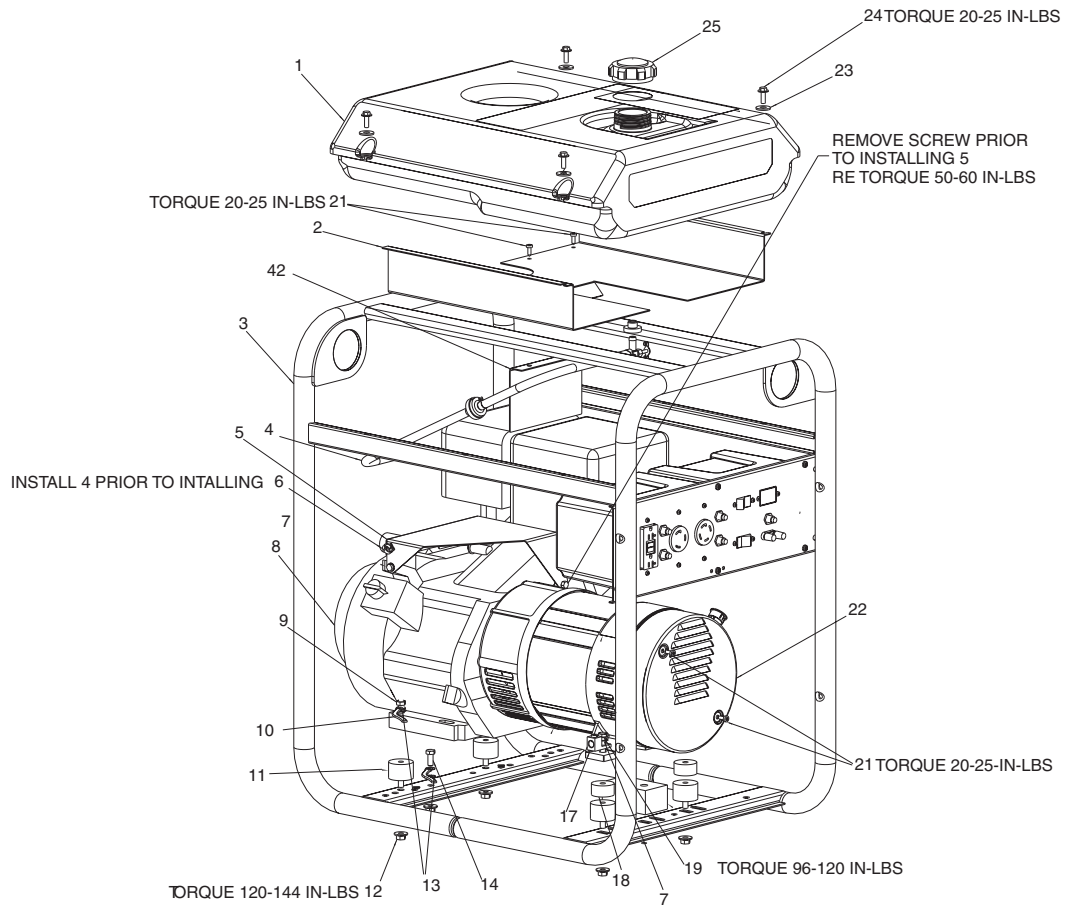


# H650CS



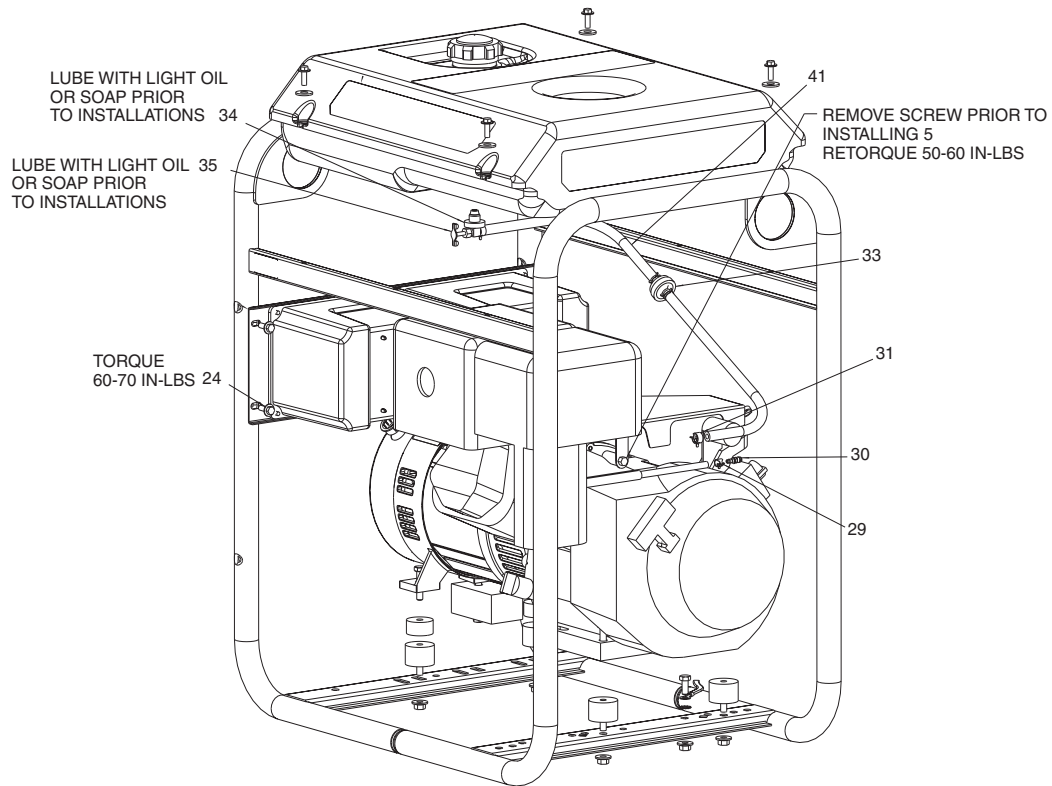
## KEY NO.

## DESCRIPTION

## PART NUMBER

|    |                            |             |
|----|----------------------------|-------------|
| 1  | TANK FUEL (7 GALLON)       | Z-GS-0795   |
| 2  | SHIELD HEAT                | GS-0675     |
| 3  | FRAME ASSY                 | Z-D20897    |
| 4  | HOSE FUEL                  | Z-GS-0225   |
| 5  | COVER ENGINE               | GS-0676     |
| 6  | CLIP SNAP-IN FUEL LINE     | GS-0763     |
| 7  | FLAT WASHER                | SS-6506-CD  |
| 8  | ENGINE (Model#GX390K1VD2)  | -           |
| 9  | SCREW HEX CAP 5/16-18 X 1  | SSF-605     |
| 10 | STRAP GROUND               | GS-0118     |
| 11 | ISOLATOR VIBRATION         | GS-0033     |
| 12 | NUT HEX WIZ LOCK LG FLANGE | SSF-8150    |
| 13 | WASHER LOCK EXTERNAL       | SSN-1619-ZN |
| 14 | SCREW CAP 5/16-18 X 3/4    | SS-12-CD    |
| 17 | LUG GROUND                 | GS-0117     |
| 18 | SPACER 5/16                | GS-0492     |
| 19 | SCREW HEX CAP 5/16-18UNC   | 95829230    |
| 21 | SCREW 10-24 X 9/16         | SSF-553-1   |
| 22 | COVER END BLANK            | GS-0077     |
| 23 | WASHER .875 OD .375 ID     | SSN-632     |
| 24 | SCREW 1/4 - 20 X .75       | 91895680    |
| 25 | CAP FUEL W/GAUGE           | GS-0863     |
| 42 | BAFFLE HEAT SHIELD         | GS-0792     |

## H650CS (cont'd)



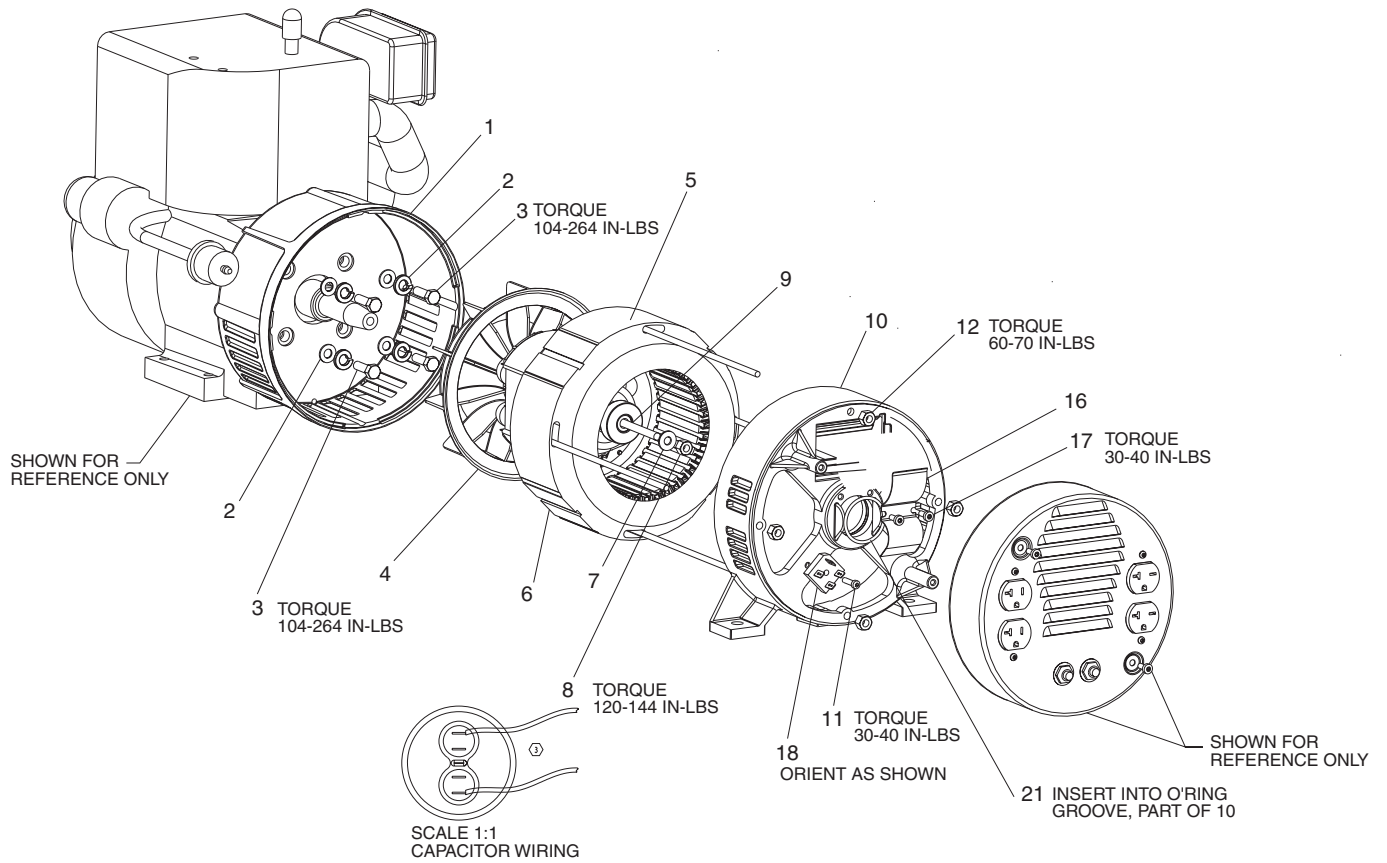
### KEY NO.

### DESCRIPTION

### PART NUMBER

|    |                          |           |
|----|--------------------------|-----------|
| 24 | SCREW 1/4 - 20 X .75     | 91895680  |
| 29 | CLAMP HOSE .301 ID       | GS-0560   |
| 30 | UNION REDUCER 1/4 X 3/8  | GS-0535   |
| 31 | CLAMP FUEL .50           | GS-0227   |
| 33 | FILTER FUEL              | GS-0459   |
| 34 | DRAIN COCK GROMMET       | GS-0446   |
| 35 | FUEL SHUTOFF VALVE       | GS-0437   |
| 41 | HOSE FUEL                | Z-GS-0225 |
| 47 | SAFETY CABLE (NOT SHOWN) | GS-0869   |

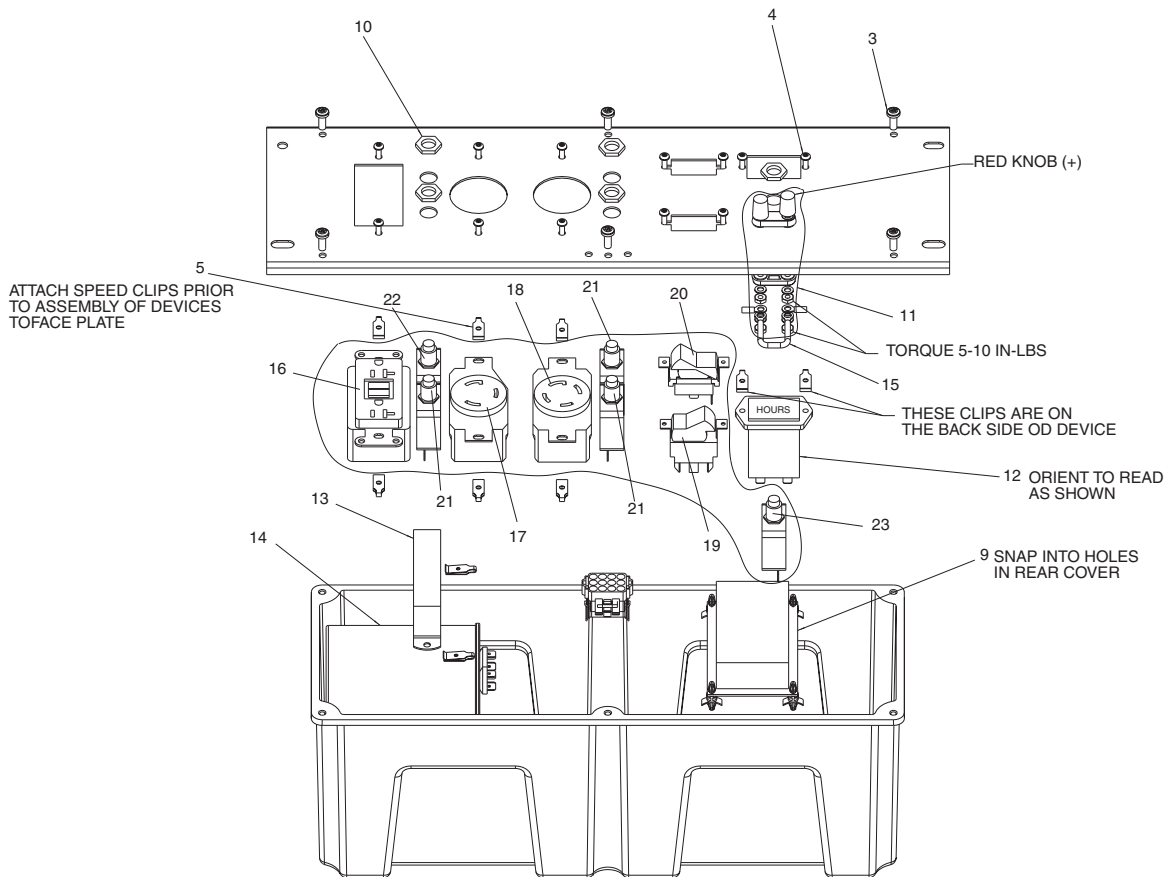
## H650CS (cont'd)



### KEY NO.

| KEY NO. | DESCRIPTION               | PART NUMBER |
|---------|---------------------------|-------------|
| 1       | ADAPTOR DRIVE END         | GS-0076     |
| 2       | WASHER 3/8 SPLIT LOCK WAS | SSN-619     |
| 3       | SCREW 3/8" - 16X1 HHS CAP | SSF-577     |
| 4       | ROTOR ASSY                | Z-GS-0860   |
| 5       | BOLT STATOR THRU          | GS-0273     |
| 6       | STATOR ASSY 207L IDLE     | Z-GS-0731   |
| 7       | WASHER FLAT 11/16 OD X 11 | SS-6506-CD  |
| 8       | NUT 5/16-24 HEX W/KEPS    | SSF-576     |
| 9       | BOLT ROTOR THRU 207L      | GS-0315-1   |
| 10      | BEARING SUPPORT O RING DC | Z-GS-0861   |
| 11      | SCREW 10-24X.75 T25 TORX  | SSF-3158-1  |
| 12      | NUT 1/4"-20 HEX W/KEPS    | SSF-575     |
| 16      | BRACKET CAPACITOR         | GS-0595     |
| 17      | SCREW 10-24 X 9/16        | SSF-553-1   |
| 18      | RECTIFIER                 | GS-0767     |
| 21      | BEARING O-RING            | GS-0862     |

## H650CS (cont'd)



### KEY

| <b>NO.</b> | <b>DESCRIPTION</b>         | <b>PART NUMBER</b> |
|------------|----------------------------|--------------------|
| 3          | SCREW 10-9X.50 PLASTITE    | SSF-3156           |
| 4          | SCREW #6-32 x .5 TORX      | SSF-583            |
| 5          | NUT SPEED #6-32            | SSF-584            |
| 9          | BOARD CIRCUIT ASSY IDLE    | GS-0663            |
| 10         | NUT HEX JAM 7/16           | SSF-595            |
| 11         | BINDING POST ASSY          | GS-0728            |
| 12         | METER HOUR                 | GS-0735            |
| 13         | CLAMP CAPACITOR            | GS-0756            |
| 14         | CAPACITOR                  | GS-0732            |
| 15         | RESISTOR ASSY DC           | GS-0835            |
| 16         | RECEP GFCI 120V 20A        | GS-0644            |
| 17         | RECEPTACLE 125V 30A SINGLE | GS-0021            |
| 18         | RECEPTACLE 4 PRONG 30A     | GS-0455            |
| 19         | SWITCH FULL POWER          | GS-0045            |
| 20         | SWITCH IDLE CONTROL        | GS-0679            |
| 21         | CIRCUIT BREAKER 25A        | GS-0645            |
| 22         | CIRCUIT BREAKER 20A        | GS-0025            |
| 23         | CIRCUIT BREAKER 10A        | GS-0681            |

### **Not Shown**

|         |                  |
|---------|------------------|
| D21269  | Operators Manual |
| D20891  | Parts Manual     |
| GS-0525 | Engine Manual    |