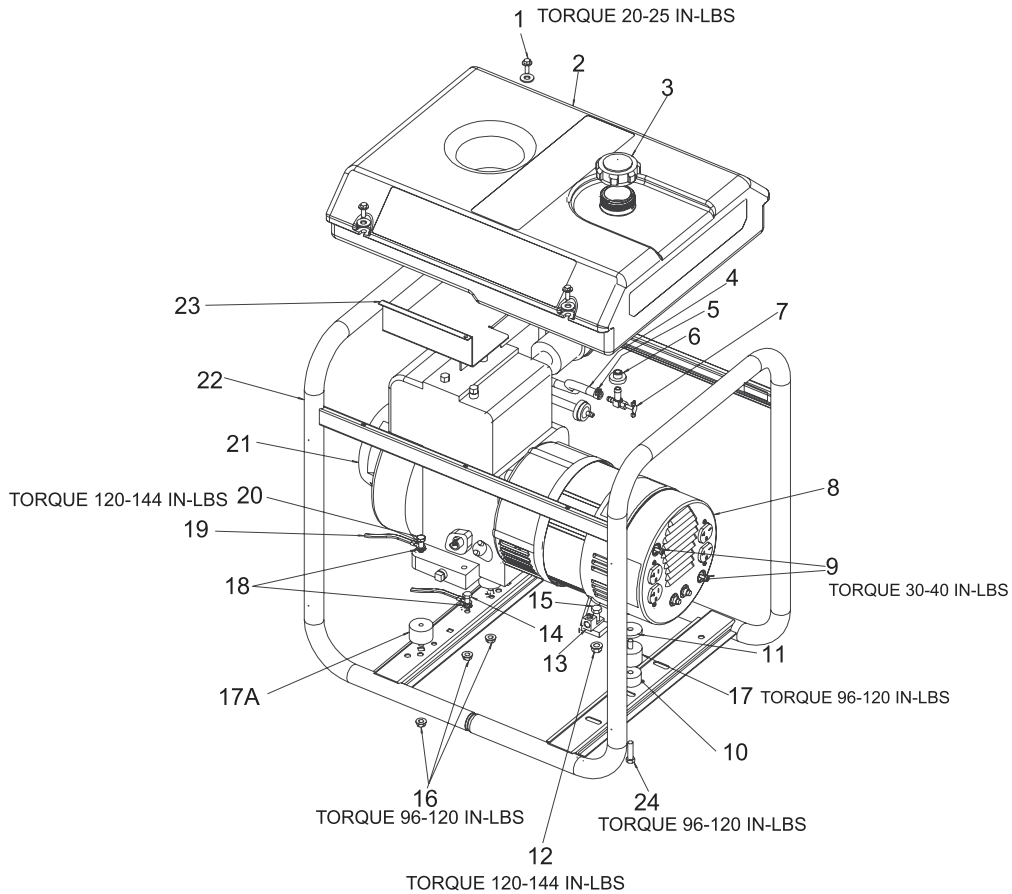


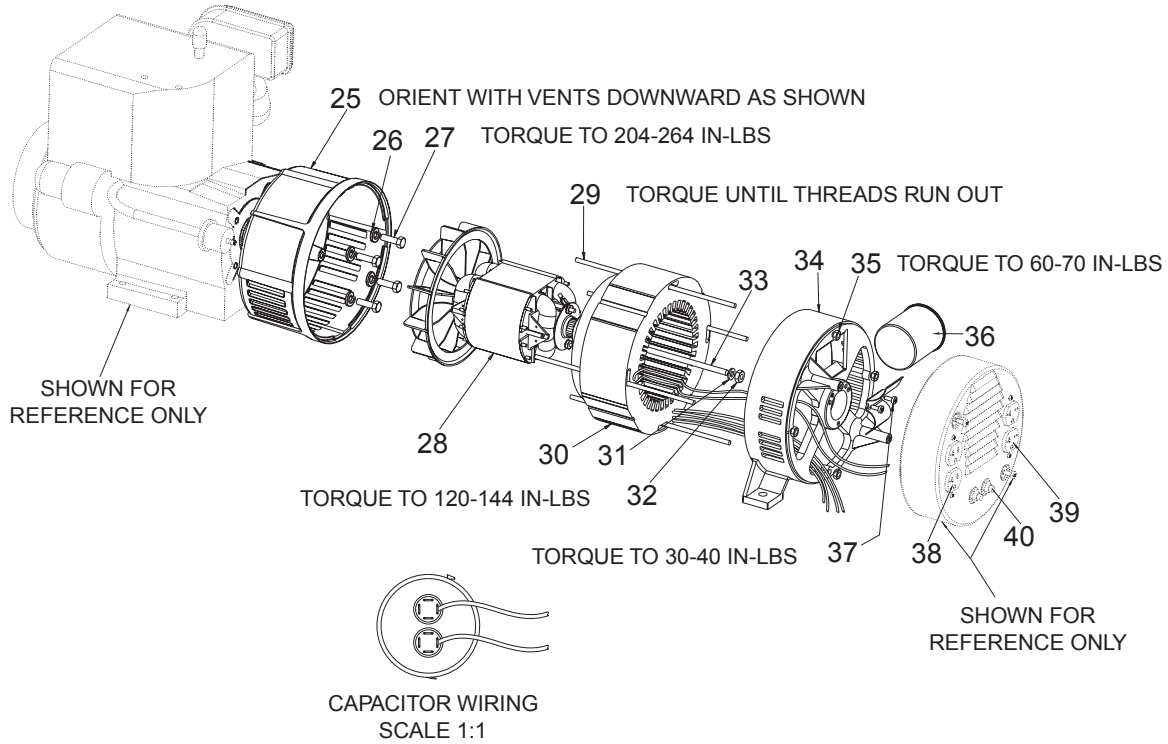
GB5000-1



KEY

<u>KEY NO.</u>	<u>DESCRIPTION</u>	<u>PART NUMBER</u>
1	FUEL TANK SCREWS	91895680
2	FUEL TANK	GS-0795
3	FUEL CAP	GS-0443
4	FUEL HOSE	GS-0225
5	FUEL LINE CLAMP	GS-0227
6	DRAINCOCK GROMMET	GS-0446
7	TANK DRAINCOCK	GS-0437
8	ENDCOVER	GS-0079
9	SCREW #10-24 x 1	SSF-553
10	REAR ISOLATOR SPACER	GS-0449
11	WASHER 3/8	SS-1525-CD
12	LOCK NUT 3/8-16	SSF-8111-ZN
13	GROUND LUG	GS-0117
14	SCREW 5/16-18 x 3/4	SS-12-CD
15	SCREW 3/8-16 x 1	SSF-3140-ZN
16	LOCK NUT 5/16-18	SSF-8150
17	ISOLATOR (FRONT)	GS-0448
17A	ISOLATOR (REAR)	GS-0033
18	LOCK WASHER	SSN-1619-ZN
19	GROUND STRAP	GS-0118
20	HEX SCREW 5/26-18 x 1.7	95829230
21	ENGINE (model #19E412-1131-E1)	-
22	FRAME ASSEMBLY	GS-0440
23	HEAT SHIELD	GS-0432
24	SCREW 3/8-16 x 3/4	SSF-8111-ZN
	ROTARY SWITCH	692309

GB5000-1



KEY NO.	DESCRIPTION	PART NUMBER
25	DRIVE END ADAPTER	GS-0076
26	LOCK WASHER 3/8	SSN-619
27	CAP SCREW 3/8-16 x 1	SSF-577
28	ROTOR ASSEMBLY	GS-0478
29	STATOR THRU BOLT	GS-0110
30	STATOR ASSEMBLY	GS-0100-1
31	WASHER 11/16 OD x 11/32	SS-6506-CD
32	NUT 5/16-24	SSF-576
33	ROTOR THRU BOLT	GS-0091-1
34	BEARING SUPPORT	GS-0861
35	HEX NUT 1/4-20	SSF-575
36	CAPACITOR	GS-0104
37	SCREW 10-32 x 1/2	SSF-553
38	120V DUPL. RECEPTACLE	GS-0019
39	240V DUPL. RECEPTACLE	GS-0020
40	CIRCUIT BREAKER (20A)	GS-0025
<u>ITEM NOT SHOWN</u>		
	*DIODE(S)	GS-0082
	CABLE TIE	GS-0105
	BEARING COVER	GS-0106
	O-RING (included in GS-0681)	GS-0682

*Refer to Page 4 in the Generator Repair Section for further diode information.

Not Shown (GB5000-1)

MG-GENMAN-F Operators Manual
 GEN-5000 Parts Manual
 GS-0113 Engine Manual

Not Shown (GB5010)

MG-GENMAN-F Operators Manual
 GEN-5010-1 Parts Manual
 GS-0113 Engine Manual