

Parts Manual - Model Nos. FTV660V-3 / FCTV660V-3

SPECIFICATION CHART

Model No.	FTV660V-3	FCTV660V-3
Horsepower	6	-----
Bore	2 3/8"	2 3/8"
Stroke	1.2"	1.2"
Voltage-Single Phase	240	240
Minimum Branch Circuit Requirement	15 amps	15 amps
**Fuse Type	Time Delay Type T	Time Delay Type T
Air Tank Capacity - GAL	60 Gal. ASME	60 Gal. ASME
Approximate Cut-in Pressure	100	100
Approximate Cut-out Pressure	125	125
SCFM @ 90 psig	9.8	9.8
SCFM @ 40 psig	14.1	14.1
Magnetic Starter	Not Required	Not Required
UL & CUL Listed		

**A circuit breaker is preferred. Use only a fuse or circuit breaker that is the same rating as the branch circuit the air compressor is operated on. If the air compressor is connected to a circuit protected by fuses, use dual element time delay fuses (Buss Fusetron Type "T" only).

**Es preferible usar un interruptor de circuitos. Usar únicamente un fusible o interruptor de circuitos con las mismas especificaciones que el circuito en el que opera el compresor de aire. Usar fusibles de retardo de doble elemento (Buss Fusetron Tipo "T" únicamente) si el circuito al que está conectado el compresor de aire está protegido con fusibles.

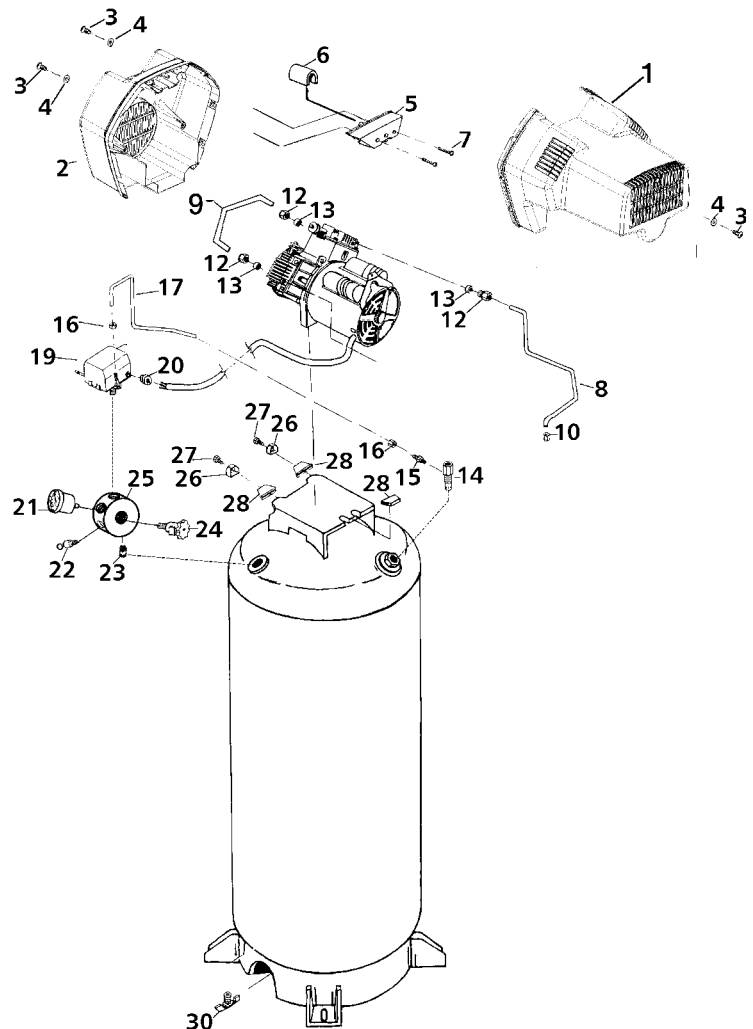
** Un disjoncteur est recommandé. N'utilisez qu'un fusible ou un disjoncteur qui a la même valeur nominale que le circuit de dérivation sur lequel fonctionne le compresseur d'air. Si le compresseur d'air est branché sur un circuit protégé par des fusibles, utilisez des fusibles à retardement à élément double (Fusetron Buss genre T seulement).

KEY

NO.	PART NUMBER	DESCRIPTION
1	DAC-243	Shroud, Rear
2	DAC-244	Shroud, Front
3	SSF-553	Screw, #10-24x9/16 Pan HD (3 used)
4	SSG-3102	O-ring (3 used)
5	ACG-13	Cover, Intake Muffler
6	ACG-12	Filter, Intake
7	SSF-554	Screw, #10-14 x 2 1/2 Pan HD (2 used)
8	AC-0242	Tube, Outlet 3/8"
9	AC-0099	Tube, outlet twin 3/8"
10	SSP-7813	Nut-Sleeve Assembly 3/8"
12	SSP-7821-1	Nut, Compression (3 used)
13	SSG-3105	O-Ring (3 used)
14	CAC-4290-3	Check Valve
15	SS-8553	Connector Body
16	SSP-7811	Nut-Sleeve Assembly 1/4" (2 used)
17	AC-0215	Pressure Relief Tube
19	CAC-4221-2	Pressure Switch
20	SSW-7367	Strain Relief Bushing
21	GA-360	Gauge
22	97503734	Safety Valve
23	SS-2072-1	Nipple
24	SSV-812	Valve Globe
25	AC-0217	Manifold
26	ACG-18	Saddle Mount Cup (2 used)
27	SSF-990	Screw, 1/4 2 ounce-2A (2 used)
28	ACG-19	Isolator (3 used)
30	SS-2707	Drain Valve
31	Refer To Separate Pump Assembly Manual	

NOT SHOWN

Pressure Release Valve Kit KK-4315



Call our **Toll Free Number 1-800-888-2468, Ext 2**, to obtain the location of the nearest Authorized Service Center for ordering repair parts and for warranty repairs.

When ordering repair parts from your local Authorized Service Center, always give the following information:

- Model number of your product
- Part number and description of the item you wish to purchase