

# DW3635 & 7112736

*AAA Pump Kit Breakdown - REV H*



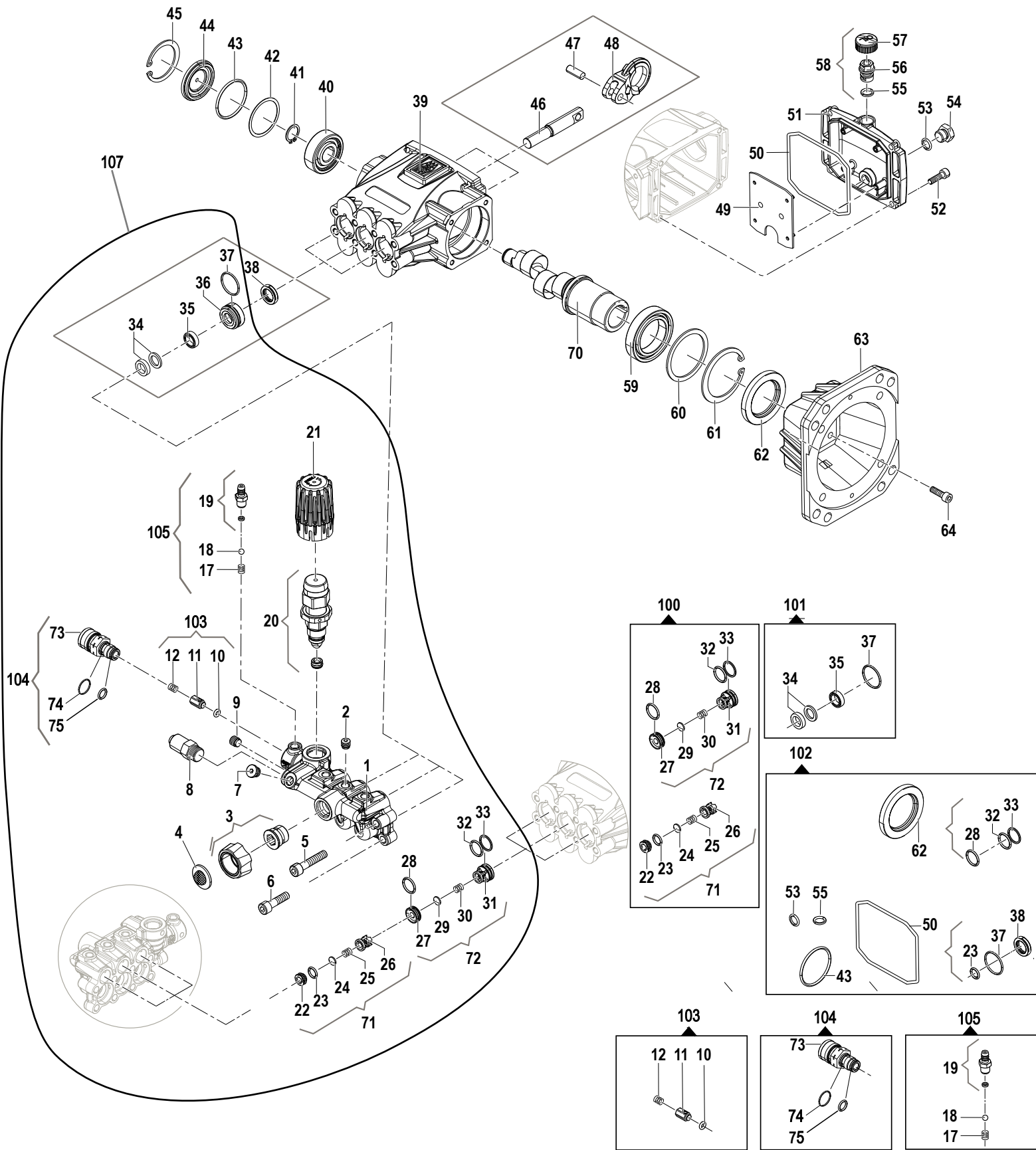
*FOR QUESTIONS AND CONCERNS, CONTACT US AT*

**A**llparts Equipment &  
Accessories Inc.

[www.allpartsinc.com](http://www.allpartsinc.com)

Call Us: 1-269-685-4123

Text Us: 1-269-447-0412



#	FNA ITEM	DESCRIPTION	NOTE	QTY
1	<a href="#">7120967</a>	Pump Manifold		1
2	N/A	Screw	G1/8"	3
3	<a href="#">7109420</a>	Water Inlet		1
4	<a href="#">7000123</a>	Water Filter		
5	N/A	Screw	M8X40	4
6	N/A	Screw	M8X30	4
7	N/A	Screw	G1/8"	1
8	N/A	Temperature Switch	G1/4"	1
9	710359	Screw	G1/8"	1
10	SEE KIT 103	O-Ring	2,4X5,6	1
11		Check Valve		1
12		Spring		1
17	SEE KIT 105	Spring		1
18		Ball	7/32"	1
19		Hose Fitting		1
20	<a href="#">7115020</a>	Regulating Valve Kit		1
21	<a href="#">7115021</a>	Valve Knob		1
22	SEE KIT 100	Suction/Discharge Valve Seat		3
23		O-Ring	1,78X8,73	3
24		Suction/Discharge Valve		3
25		Suction/Discharge Valve spring		3
26		Suction/Discharge Valve cage		3
27		Suction/Discharge Valve Seat (discharge side)		3
28		O-Ring	1,78X12,42	3
29		Suction/Discharge Valve		3
30		Suction/Discharge Valve spring		3
31		Suction/Discharge Valve cage (discharge side)		3
32		O-Ring	1,78X14	3
33		Ring	1,78X14	3
34	SEE KIT 101	Sealing ring	12X18X6,5	3
35		Sealing ring	12X18X5	3
36	N/A	Packing retainer	D12	3
37	SEE KIT 102	O-Ring	1,78X23,52	3
38		Sealing ring	14X22X5	3
39	N/A	Pump Crankcase	VrFNA	1
40	N/A	Bearing	17X47X14	1
41	N/A	Outer seeger	D.17	1
42	N/A	Axial ring	40X46,5X0,5	1
43	<a href="#">7115022</a>	O-Ring	2,62X40,95	1
44	<a href="#">7115023</a>	Side cover		1
45	<a href="#">7115024</a>	Inner seeger	D.47	1
46	<a href="#">7115025</a>	Piston	D.12	3
47	N/A	Pin	8X23	3
48	N/A	Connection rod		3
49	<a href="#">7110310</a>	Cover plate		1

#	FNA ITEM	DESCRIPTION	NOTE	QTY
50	SEE KIT 102	O-Ring	3,0X88	1
51	N/A	Crankcase cover		1
52	<a href="#">7110307</a>	Screw	M6X20	4
53	<a href="#">7115026</a>	O-Ring	2,62X9,92	1
54	<a href="#">7106869</a>	Cap	G1/4"	1
55	<a href="#">7110305</a>	O-Ring	2,62X9,13	1
56	<a href="#">7111225</a>	Cap		1
57	<a href="#">7110303</a>	Cap		1
58	<a href="#">7110299</a>	Oil cap kit		1
59	N/A	Eccentric shaft	40X62X12	1
60	N/A	Axial ring	51X61X0,5	1
61	N/A	Inner seeger	D.62	1
62	<a href="#">7110314</a>	Sealing ring	40X62X7	1
63	N/A	Motor/pump support		1
64	N/A	Screw	M6X20	4
70	N/A	Eccentric shaft		1
71	N/A	Suction valve ass.y kit		3
72	SEE KIT 100	Delivery valve ass.y kit		3
73	SEE KIT 104	Quick coupling + injector	EI 1,8	1
74		O-Ring	1,78X15,6	1
75		O-Ring	1,78X12,42	1
<b>Kits</b>				
100	<a href="#">7114725</a>	Complete Valve Kit		1
101	<a href="#">7114711</a>	Water Seal Kit		1
102	<a href="#">7115014</a>	Oil Seal Kit		1
103	<a href="#">7115566</a>	Outlet Check Valve		1
104	<a href="#">7115567</a>	QC Outlet w/ Injector Body Kit		1
105	<a href="#">7115568</a>	Injector Kit		1
106	<a href="#">7118732</a>	M22x1.5 Injector	M22X1.5 M	1
107	<a href="#">7120967</a>	Manifold Kit QC		1