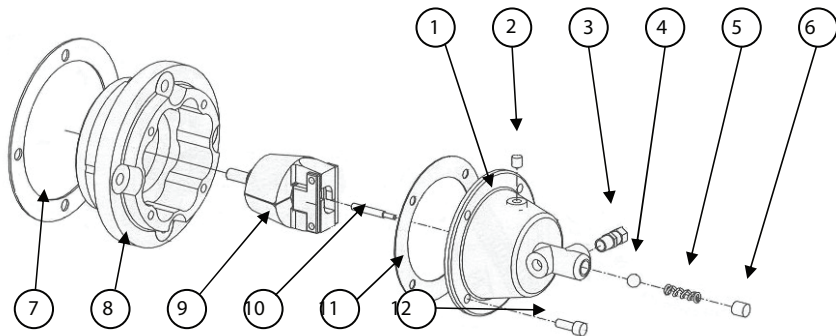


# Allparts Equipment & Accessories Inc.

## Centrifugal Pressure Release Assembly ('CPR-9700'):



Ref. #:	Part #:	Description:	Ref. #:	Part #:	Description:	Ref. #:	Part #:	Description:
1	CPR-9009	Valve / Cup Body	5	CPR-9006	Valve Spring	9	CPR-9401	Plunger / Flyweight
2	CPR-9000-R	1/8" NPT Brass Plug	6	CPR-9000-R	Plug	10	CPR-9004	Valve Stem
3	SS-8553	1/4" Tube x 1/8" NPT Strt Fit.	7*	445-12	Gasket	11	445-144	End Plate Gasket
4	CPR-9007	1/4" Dia Steel Ball	8*	445-136	Bearing Housing	12	SS-10022	1/4"-20 x 1" HSCS

**Note:** Parts noted with a "\*" above are required when converting a non-CPR Pump to one with a CPR Assembly, and are not included in the 'CPR-9700' Kit.

**CPR Repair Kit:** 'CPR-9010' Repair Kit includes 'CPR-9007' (#4), 'CPR-9006' (#5), 'CPR-9000-R' (#6), 'CPR-9004' (#10), and '445-144' End Plate Gasket (#11).

### Centrifugal Pressure Release Torque Values:

Ref. #:	Description:	In Lbs	Ft Lbs	Nm
9	Plunger / Flyweight	288	24	32.5
12	1/4"-20 x 1" HSCS	96	8	10.8