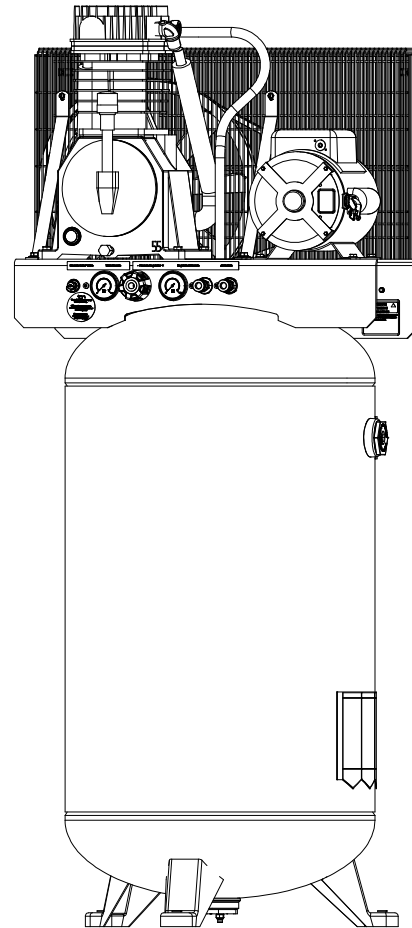


**Two Stage, Belt Drive, Electric Air Compressors**

**NOTE:** These units **DO NOT** require a magnetic starter.

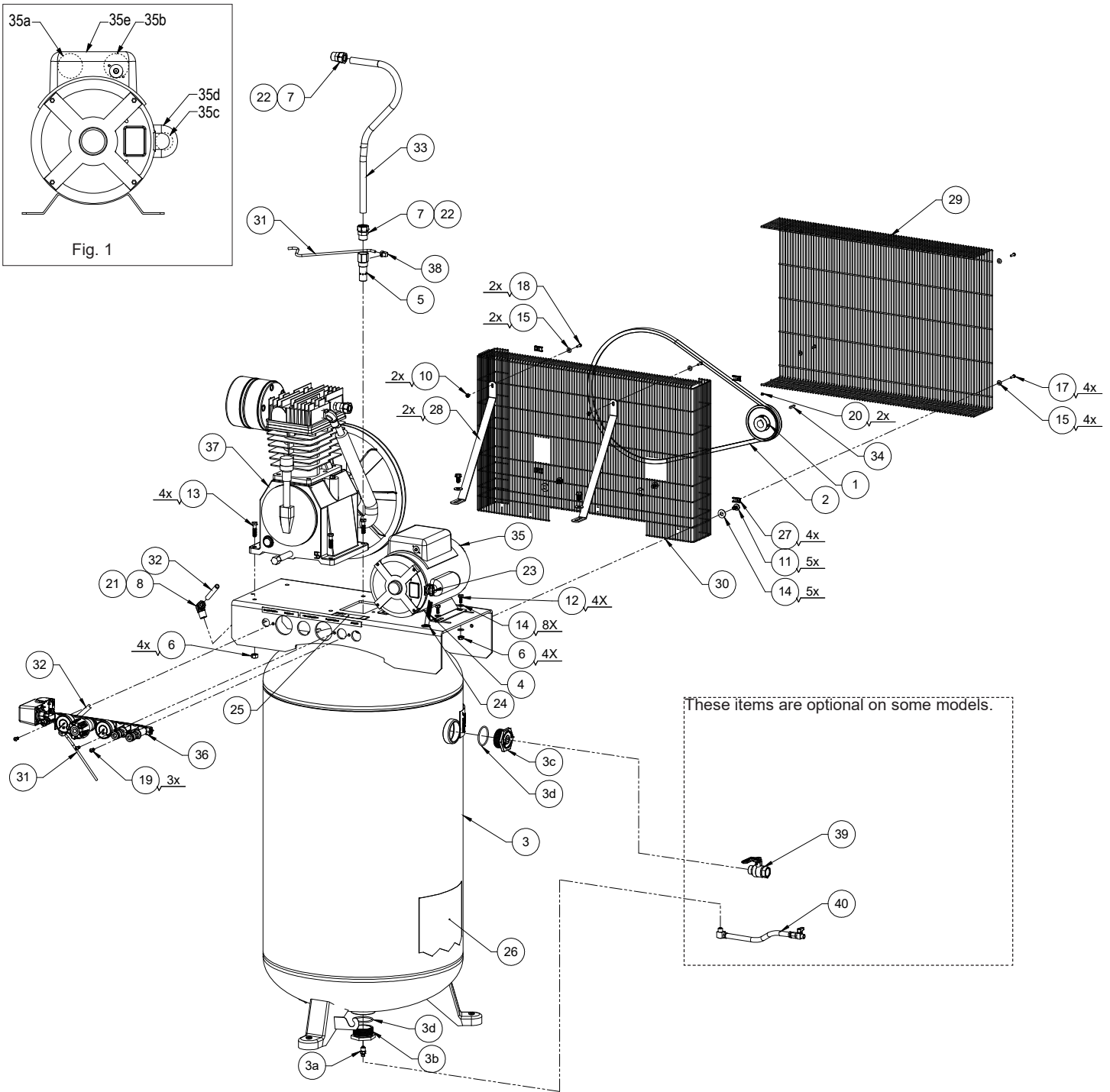
*Product style and configuration may vary.*



**SPECIFICATION CHART**

MODEL NO.	RUNNING H.P.	TANK CAPACITY GALLONS	VOLTAGE/ AMPS/PHASE	KICK-IN PRESSURE	KICK-OUT PRESSURE
V5048055	6	Vert 80 (302,8)	230/24/1	145 (10 bar)	175 (12 bar)

# PARTS DRAWING



## PARTS LIST

Item	Part No.	Qty	Description
1	006-0165	1	Pulley
2	008-0040	1	V-belt, B64
3	021-0308	1	Tank assy
3a	072-0006	1	Petcock, 1/4" NPT
3b	512-0041	1	Bushing, 2" NPSM x 1/4" NPT

## PARTS LIST

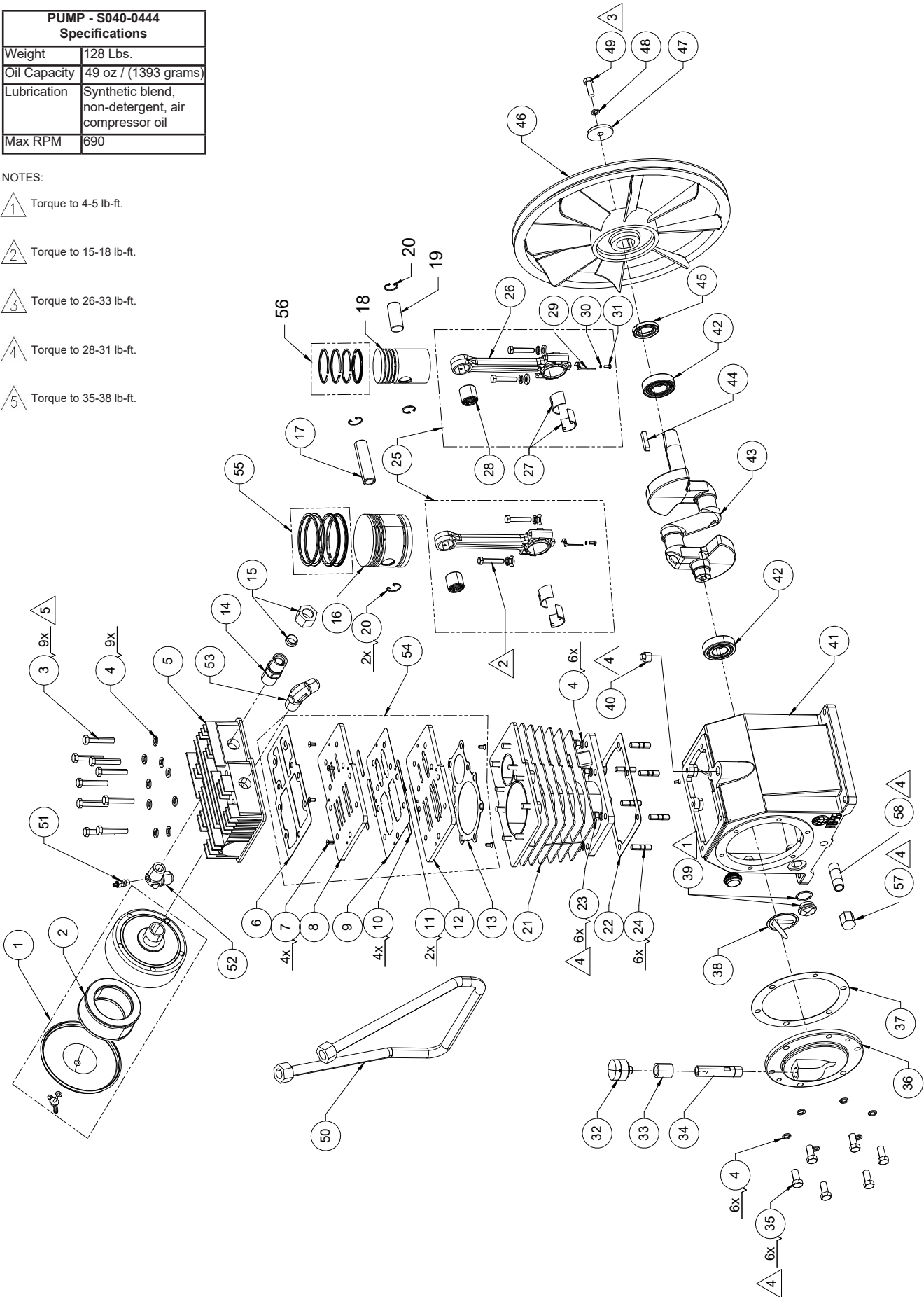
Item	Part No.	Qty	Description
3c	512-0043	1	Bushing, 2" NPSM x 3/4" NPT
3d	513-0001	2	2" O-ring
4	026-0736	1	Cord, interconnect
5	031-0020	1	Check valve
6	058-0009	8	Nut, 3/8"-16
7	058-0012	2	Compression nut & sleeve
8	058-0016	1	Compression nut, 1/2"
10	058-0158	2	Lock nut, 10-32
11	059-0164	6	Screw, 3/8"-16 x 3/4" lg
12	059-1007	4	Screw, 3/8" x 1" lg
13	059-0380	4	Screw, 3/8"-16 x 1.5" lg
14	060-0023	16	Washer, 3/8"
15	060-0146	6	Washer, #10
17	061-0152	4	Screw, #10-14 x 3/4" lg
18	061-0212	2	Screw, #10 x 3/4" lg
19	061-0213	3	Screw, 1/4-20 x 5/8"
20	061-0238	2	Setscrew
21	064-0002	1	Elbow, 90°
22	068-0003	2	Connector, 3/4 NPT x 3/4 tube
23	071-0002	1	Strain relief, 3/8" straight
24	093-0078	1	Grommet
25	098-2856	1	Warning label
26	098-3870	1	Warning label
27	103-0176	4	U-nut, spring #10
28	114-0349	2	Bracket, belt guard
29	125-0196	1	Beltguard (outer)
30	125-0219	1	Beltguard (inner)
31	145-0495	1	Tube, bleeder
32	145-0539	1	Tube, transfer, 1/2"
33	145-0670	1	Tube, transfer, 3/4"
34	146-0016	1	Key, 1/4" square x 1 1/4" lg
35	160-0338	1	Motor, 6 rhp, 24 amp
35a	166-0191	1	Start capacitor (fig. 1)
35b	166-0178	1	Run capacitor (fig. 1)
35c	166-0137	1	Run capacitor (fig. 1)
35d	166-0194	1	Run capacitor cover (fig. 1)
35e	166-0205	1	Capacitor cover (fig. 1)
36	See page 6	1	Manifold assy
37	See pages 4-6	1	Pump assy
38	064-0003	1	Elbow, 90°
39	072-0023	1	Valve shut off
40	073-0020	1	Drain valve assy

# PARTS DRAWING

PUMP - S040-0444 Specifications	
Weight	128 Lbs.
Oil Capacity	49 oz / (1393 grams)
Lubrication	Synthetic blend, non-detergent, air compressor oil
Max RPM	690

NOTES:

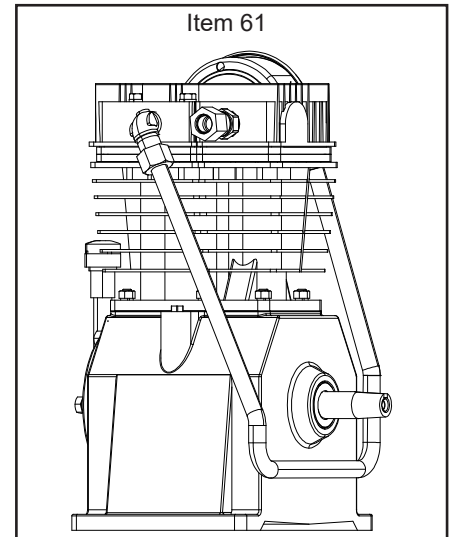
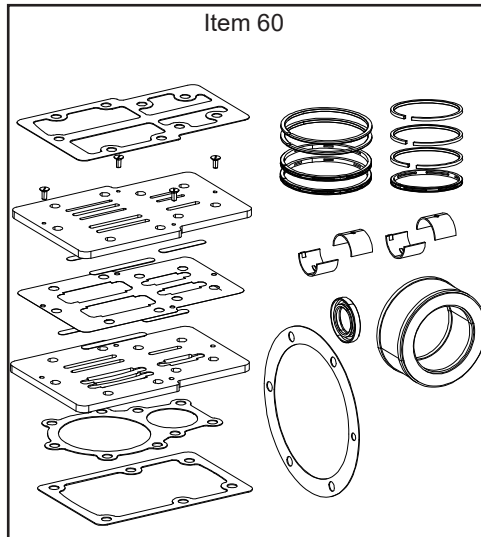
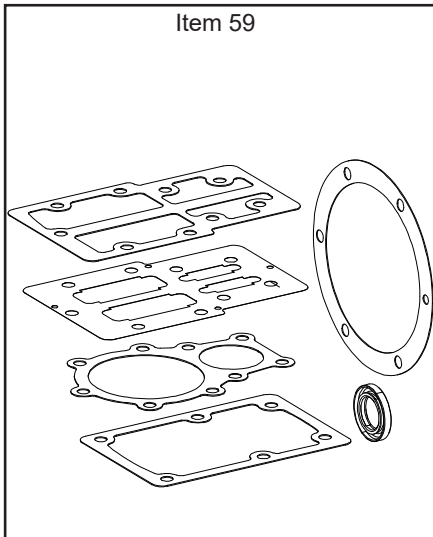
- 1 Torque to 4-5 lb-ft.
- 2 Torque to 15-18 lb-ft.
- 3 Torque to 26-33 lb-ft.
- 4 Torque to 28-31 lb-ft.
- 5 Torque to 35-38 lb-ft.



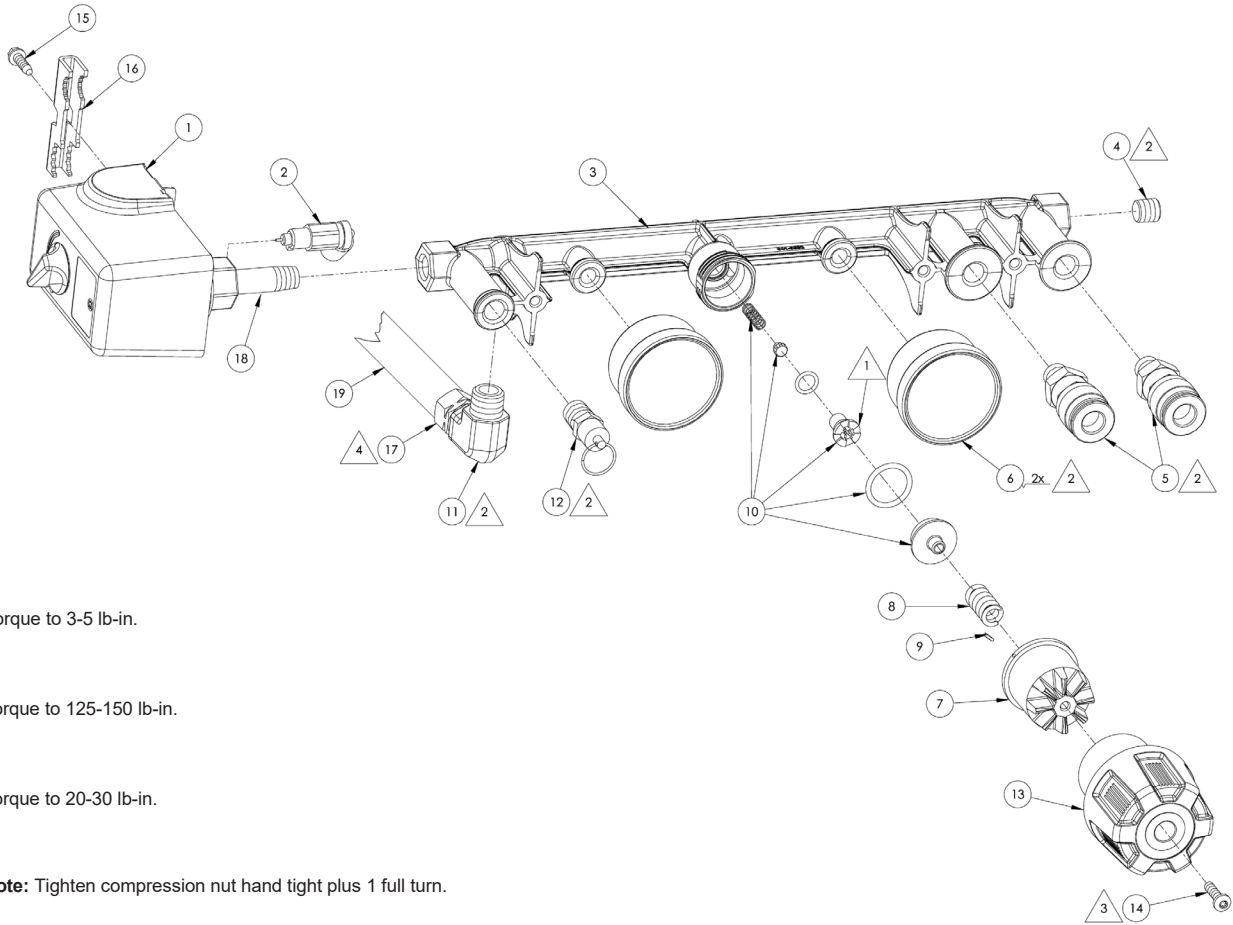
## PARTS LIST

Item	Part No.	Qty	Description
1	019-0294	1	Filter, canister assy <i>(includes item 2)</i>
2	019-0295	1	Element, filter replacement
3	059-0405	9	Bolt, head, M10 x 90 mm lg
4	060-0209	22	Washer, lock M10
5	042-0135	1	Head, cylinder
6	046-0336	1	Gasket, cylinder head
7	N/A <i>(Order item #54)</i>	4	Bolt, M5 x 12 mm lg
8	N/A <i>(Order item #54)</i>	1	Seat, valve (upper)
9	046-0337	1	Gasket, valve plate
10	N/A <i>(Order item #54)</i>	4	Reed valve, LP
11	N/A <i>(Order item #54)</i>	2	Reed valve, HP
12	N/A <i>(Order item #54)</i>	1	Seat, valve (lower)
13	046-0338	1	Gasket, valve cylinder
14	068-0003	1	Connector
15	058-0012	1	Compression nut
16	048-0135	1	Piston, low pressure
17	052-0042	1	Pin, wrist, low pressure
18	048-0136	1	Piston, high pressure
19	052-0043	1	Pin, wrist, high pressure
20	054-0268	4	Retaining ring
21	050-0072	1	Cylinder
22	046-0339	1	Gasket, cylinder/crankcase
23	058-0185	6	Nut, M10
24	059-0406	6	Bolt, M10 x 30 mm lg
25	047-0101	2	Rod, connecting assy
26	N/A <i>(Order item #25)</i>	2	Connecting rod
27	051-0111	2 pair	Insert, bearing
28	051-0112	2	Needle bearing
29	N/A <i>(Order item #25)</i>	2	Oil dipper
30	N/A <i>(Order item #25)</i>	2	Washer, spring
31	N/A <i>(Order item #25)</i>	2	Bolt, M5 x 10 mm lg
32	059-0097	1	Breather cap
33	068-0104	1	Connector
34	065-0111	1	Breather tube
35	059-0407	6	Bolt, M10 x 30 mm lg
36	045-0056	1	Bearing carrier, rear
37	046-0340	1	Gasket, bearing carrier
38	019-0296	1	Filter, oil screen
39	032-0126	1	Oil level sight glass
40	062-0073	2	Plug
41	049-0056	1	Crankcase
42	051-0110	2	Bearing
43	053-0116	1	Crankshaft
44 **	146-0033	1	Key, flywheel
45	046-0342	1	Oil seal
46 **	044-0076	1	Flywheel, 16.54" O.D.

Item	Part No.	Qty	Description
47 **	060-0210	1	Washer, flywheel
48 **	060-0211	1	Washer, lock #10
49 **	059-0408	1	Bolt, M10 x 30 mm lg
50	145-0663	1	Tube, outlet
51	136-0105	1	Valve, pressure relief
52	064-0122	1	Elbow
53	064-0121	1	Elbow
54	043-0228	1	Valve plate assembly (includes items 6-13)
55	054-0266	1	Ring set, LP
56	054-0267	1	Ring set, HP
57	062-0101	1	Pipe cap, 3/8"
58	065-0057	1	Nipple, 3/8" x 2"
59	046-0341	1	Gaskets, complete set (includes items 6, 9, 13, 22, 37 & 45)
60	165-0304	1	Overhaul kit (includes items 2, 27, 45, & 54-57)
61	S040-0444	1	Pump assy (includes items 1-43, 45, & 50-53)
** Must be purchased separately			
N/A Items are not available as replacement parts.			



## PARTS DRAWING



**NOTES:**

**1** Torque to 3-5 lb-in.

**2** Torque to 125-150 lb-in.

**3** Torque to 20-30 lb-in.

**3** **Note:** Tighten compression nut hand tight plus 1 full turn.

## PARTS LIST

Item	Part No.	Qty	Description
1	034-0205	1	Switch, pressure (includes items 2 & 15-16)
2	136-0090	1	Valve, bleeder
3	141-0283	1	Manifold assembly (includes items 4-11)
4	062-0065	1	Plug, 1/4"
5	036-0031	2	Quick connect coupler
6	032-0092	2	Gauge, 300# 1/8" back connect
7	092-0025	1	Knob, inner
8	055-0078	1	Spring
9	107-0056	1	Pin
10	105-0016	1	Regulator repair kit
11	064-0091	1	Elbow 3/8" NPT x 1/2"
12	136-0007	1	Pressure relief valve
13	092-0037	1	Knob, outer
14	061-0203	1	Screw, #10-16 x 1/2"
15	061-0216	1	Screw
16	071-0033	1	Strain relief
17	058-0016	1	Compression nut, 1/2"
18	065-0033	1	Nipple, 1/4 x 1-1/2
19	145-0539	1	Transfer tube, 1/2"

## PARTS AND SERVICE

Replacement parts and service are available from your nearest authorized Service Center. If the need arises, contact Product Service as listed at right.

When consulting with a Service Center or Product Service, refer to the model number and serial number located on the serial label of the compressor. Proof of purchase is required for all transactions and a copy of your sales receipt may be requested.

Record the model number, serial number, and date purchased in the spaces provided below. Retain your sales

Model No.

Serial No.

Date Purchased

receipt and this manual for future reference. When needing service, please contact the nearest authorized Service Center or call:

### PRODUCT SERVICE



**In U.S.A. or Canada**

**Toll-Free**

**1-888-895-4549**

**Fax**

**1-507-723-5013**

Sanborn Mfg., Division of MAT Industries, LLC.  
118 West Rock Street  
Springfield, MN 56087

Made in USA with domestic and foreign components

©2014 **Sanborn Mfg.**

A Division of MAT Industries, LLC.  
Springfield, MN 56087

**1-888-895-4549**

All Rights Reserved.