

SUPERIOR

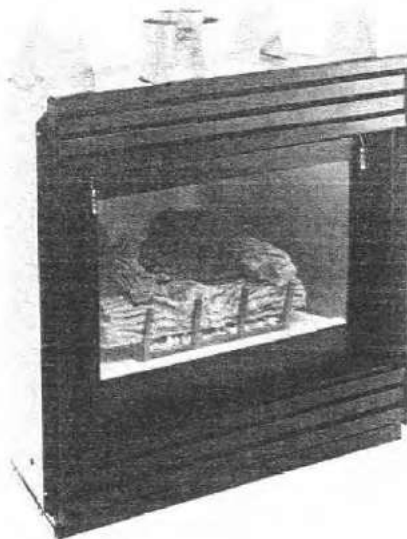
The Fireplace Company

Installation And Operating Instructions

*For Superior's
Discovery Series
Sealed Combustion
Decorative Gas
Appliance*

*Natural Gas Models
DS-36TN
Propane Models
DS-36TP*

*And Vent System
Accessories
DST4-12/18/36
DST-90ELB
DST-45ELB
DST-HTK
DST-VTK
DS-HTS
DST-FS
DST-F*



Warnock Hersey
Report No. 606-221900

WARNING: IMPROPER INSTALLATION, ADJUSTMENT, ALTERATION, SERVICE OR MAINTENANCE CAN CAUSE INJURY OR PROPERTY DAMAGE. REFER TO THIS MANUAL. FOR ASSISTANCE OR ADDITIONAL INFORMATION CONSULT A QUALIFIED INSTALLER, SERVICE AGENCY OR THE GAS SUPPLIER.

FOR YOUR SAFETY

What to do if you smell gas:

- Do not try to light any appliance.
- Do not touch any electrical switches. Do not use any phone in your building.
- Immediately call your gas supplier from a neighbor's phone. Follow the gas supplier's instructions.
- If you cannot reach your gas supplier, call the fire department.

FOR YOUR SAFETY

Do not store or use gasoline or other flammable vapors or liquids in the vicinity of this or any other appliance.

WARNING: THE DS-36T SERIES APPLIANCES ARE VENTED DECORATIVE GAS APPLIANCES. DO NOT BURN WOOD OR OTHER MATERIAL IN THESE APPLIANCES.

Due to high temperatures, the appliance should be located out of traffic and away from furniture or drapes. Do not place clothing or other materials on or near the appliance.

PLEASE RETAIN THIS MANUAL FOR FUTURE REFERENCE.

TABLE OF CONTENTS

Introduction	page 2
General information	page 2
Location and clearances	page 3
Installation	page 3
Framing dimensions	page 3
Appliance dimensions	page 4
Vertical termination systems	page 6
Ten Foot Rule	page 8
Horizontal termination systems	page 11
High Elevation Derating	page 13
Finishing Requirements	page 15
Cold Climate Insulation	page 16
Accessories	page 16
Care/operation	page 16
Maintenance	page 16
Warranty	page 17
Replacement parts	page 17
Accessories/components	page 17
Trouble shooting guide	page 19
Lighting instructions	page 20
Replacement parts list	page 22

This installation manual will help you obtain a safe, efficient, dependable installation for your appliance and vent system. Please read and understand these instructions before beginning your installation.

INTRODUCTION

The DS-36T is a sealed combustion, air circulating gas appliance designed for residential applications. The appliance must be installed with the Superior Fireplace DST vent system that is routed to the outside atmosphere.

The appliance is designed to operate on natural or propane gas. A millivolt gas control valve with piezo ignition system provides safe, efficient operation. No external electrical power is required.

This appliance complies with National Safety Standards and is tested and listed by Warnock Hersey International Inc. (Report No. 606-221900) to ANSI Z21.50b - 1990 (in Canada, CAN/CGA-2.22-M89, IR #41-1991, IR #43-1992 and CAN/CGA-2.17-M91) as a vented decorative gas appliance.

Installation must conform to local codes. In the absence of local codes, installation must comply with the current National Fuel Gas Code, ANSI Z223.1, 1988. (In Canada, the current CAN-1 B149 installation code.)

DO NOT ATTEMPT TO ALTER OR MODIFY THE CONSTRUCTION OF THE APPLIANCE OR ITS COMPONENTS. ANY MODIFICATION OR ALTERATION MAY VOID THE WARRANTY, CERTIFICATION AND LISTINGS OF THIS UNIT.

GENERAL INFORMATION

***Note:** Installation and repair should be performed by a qualified service person. The appliance should be inspected annually by a qualified professional service person. More frequent inspections and cleanings may be required due to excessive lint from carpeting, bedding material, etc. It is imperative that the control compartment, burners and circulating air passage ways of the appliance be kept clean.*

Provide adequate clearances around air openings and adequate accessibility clearance for service and proper operation. Never obstruct the front openings of the appliance.

This appliance is designed to operate on natural or propane gas only. The use of other fuels or combination of fuels will degrade the performance of this system.

Input of appliance is 24,000 BTU/HR for natural gas and 21,000 BTU/HR for propane gas models.

Do not use this appliance if any part has been under water. Immediately call a qualified service technician to inspect the appliance and to replace any parts of the control system and any gas control which have been under water.

A 1/8" NPT test gage connection is provided on the gas control valve adjacent to the outlet to the main burner.

Minimum inlet gas pressure is 4.5 inches water column for natural gas and 11 inches water column for propane for the purpose of input adjustment.

Maximum inlet gas supply pressure is 7.0 inches water column for natural gas and 13.0 inches water column for propane.

The appliance must be isolated from the gas supply piping system (by closing its individual manual shut-off valve) during any pressure testing of the gas supply piping system at test pressures equal to or less than 1/2 psig (3.5 kPa).

TYPICAL INSTALLATION

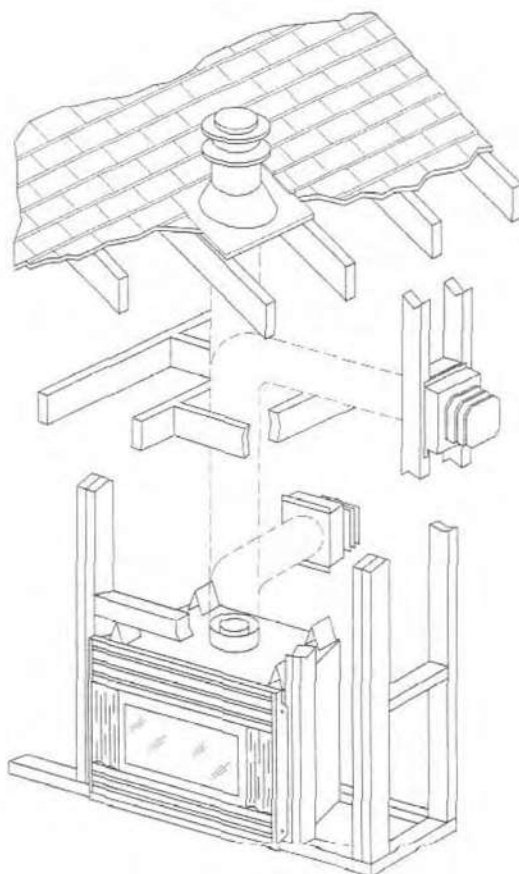
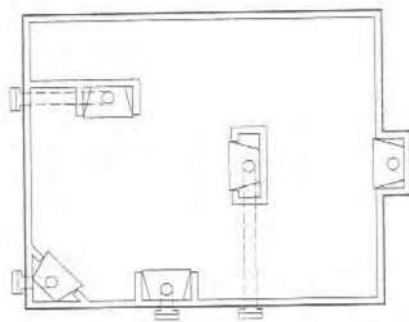


Figure 1

NOTE: DIAGRAMS & ILLUSTRATIONS NOT TO SCALE

The appliance and its individual shut-off valve must be disconnected from the gas supply piping system during any pressure testing of that system at pressures in excess of 1/2 psig (3.5 kPa).

This appliance must not be connected to a chimney or flue serving a separate solid fuel burning appliance.



Typical Locations

Figure 2

LOCATION AND CLEARANCES

In selecting the location, the esthetic and functional use of the appliance are primary concerns. However, vent system routing to the exterior and access to the fuel supply are also important. Consideration should be given to traffic ways, furniture, draperies, etc., due to elevated surface temperatures. The location should also be free of electrical, plumbing or other heating/air conditioning ducting.

The appliance should be mounted on a fully supported base extending the full width and depth of the unit. The appliance may be located on or near conventional construction materials. However, if installed on combustible materials, such as carpeting, vinyl tile, etc., a metal or wood barrier covering the entire bottom surface must be used.

Minimum clearance to combustibles: sides and back - 0", floor - 0", adjacent wall - 0".

Minimum clearance to combustibles for the vent system is; vertical run = 2" (51 mm), horizontal run = top @ 3" (76 mm), sides @ 2" (51 mm), bottom @ 1" (25 mm).

ASSEMBLY STEPS

The typical sequence of installation follows, however, each installation is unique resulting in variations to those described.

1. Construct framing and position the appliance.

2. Route gas supply line to appliance location.
3. Install vent system and exterior termination.
4. Make connection to gas supply and install the log and burner assembly.
5. Install the operating control switch and bring in electrical service line for forced air circulating fan (optional equipment).
6. Mount forced air kit (optional equipment).
7. Install glass panel assembly.
8. Finish enclosure walls and trim.
9. Attach air louvers and/or optional trim pieces.

INSTALLATION

The appliance is shipped with the controls and burner tray installed and pre-wired. Remove the shipping carton, exposing the front glass panel. Loosen and remove two (2) bolts, with springs and washers, at the upper left and right hand corners of the glass frame, tilt outward, then lift to remove the glass panel. Set the panel aside and protect from inadvertent damage. Retain bolts, springs and washers for reassembly. Next, remove the carton(s) packed inside the appliance and also set these aside.

Step 1. Frame appliance enclosure as illustrated in Figures 4 through 7.

Step 2. Route a 1/2" (13 mm) black iron gas line along the left side framing. Drill clearance hole as shown in Figure 3.

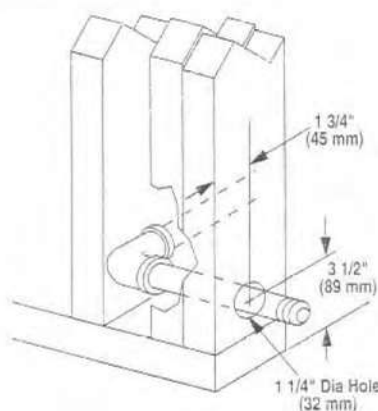


Figure 3

Step 3. Position appliance into prepared framing, secure with 6d nails at the nailing flange along each side.

FRAMING DIMENSIONS

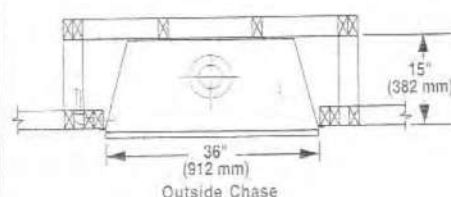


Figure 4

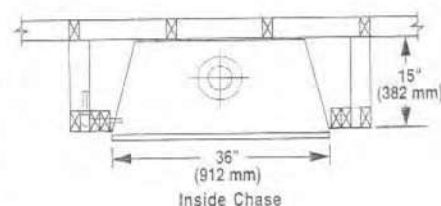


Figure 5

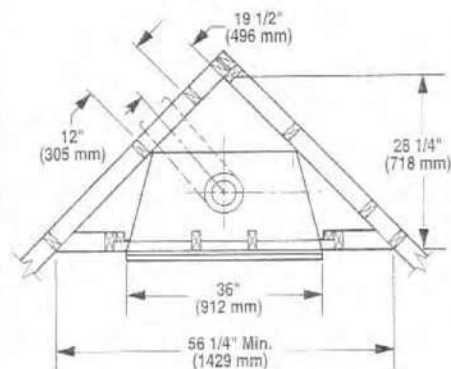


Figure 6

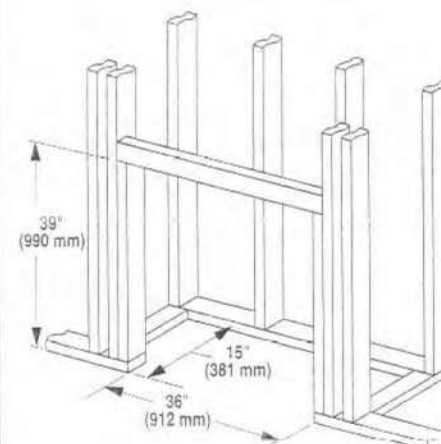
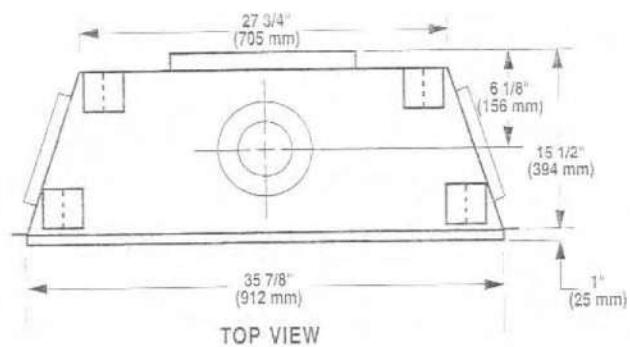


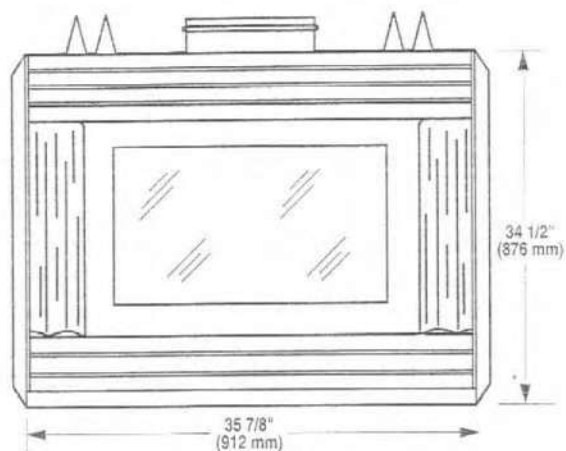
Figure 7

NOTE: DIAGRAMS & ILLUSTRATIONS NOT TO SCALE

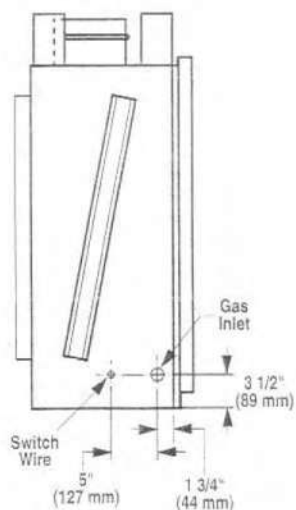
APPLIANCE DIMENSIONS



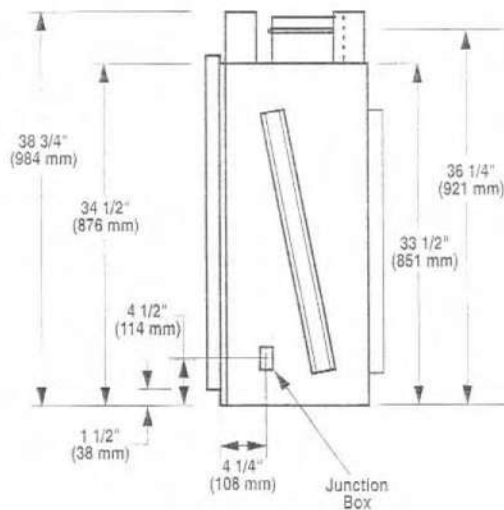
TOP VIEW



FRONT VIEW



LEFT SIDE



RIGHT SIDE

5

<p>A = clearance above grade, veranda, porch, deck, or balcony 12 inches (30 cm) minimum</p> <p>B = clearance to window or door that may be opened U.S. - 9 inches (22.5 cm) minimum Canada - 12 inches (30 cm) minimum</p> <p>C = clearance to permanently closed window - recommended to prevent condensation on window U.S. - 9 inches (22.5 cm) minimum Canada - 12 inches (30 cm) minimum</p> <p>D = vertical clearance to soffit located above the terminal ventilated soffit 18 inches (46 cm) minimum unventilated soffit 12 inches (46 cm) minimum</p> <p>F = clearance to outside corner 9 inches (23 cm) minimum</p> <p>G = clearance to inside corner 6 inches (15.2 cm) minimum</p> <p>H = not be installed above a meter/regulator assembly or within 3 feet (90 cm) horizontally from the center line of the regulator</p>	<p>I = clearance to service regulator vent outlet U.S. - 3 feet (1.8 m) minimum Canada - 6 feet (90 cm) minimum</p> <p>J = clearance to air supply inlet to building or the combustion air inlet to any other appliance non-mechanical inlet: U.S. - 9 inches (22.5 cm) minimum Canada - 12 inches (30 cm) minimum mechanical air supply: 6 feet (1.8 m) minimum</p> <p>L = clearance above paved sidewalk or paved driveway located on public property 7 feet (2.1 m) minimum</p> <p>Note: A vent shall not terminate directly above a sidewalk or paved driveway which is located between two (2) single family dwellings and serves both dwellings.</p> <p>M = clearance under veranda, porch, deck, or balcony where fully open on a minimum of two (2) sides beneath the floor 12 inches (30 cm) minimum</p>
--	---

Note: Check local codes or regulations for variations.

Figure 9

NOTE: DIAGRAMS & ILLUSTRATIONS ARE NOT TO SCALE

Step 4. Install the Vent System - The DS-36T appliance must be vented directly to the outside through its own double wall pipe assembly; 4.0" (102 mm) and 7.0" (178 mm) diameters. The system may not service multiple appliances, and must never be connected to a flue serving a solid fuel burning appliance.

The appliance is designed, tested and listed for operation with, and only with, Superior Fire-place DST vent components. DO NOT use components of other manufacture.

Listed Vent Components:

DST-HTK	- Horizontal termination kit
DST-VTK	- Vertical termination kit
DST-F	- Flashing and collar
DST-FS	- Firestop
DST4-12/18/36	- Vent sections
DST-90ELB	- 90° Elbow
DST-45ELB	- 45° Elbow

With the appliance secured in framing, determine vent routing and identify the exterior termination location. The following sections describe vertical (roof) and horizontal (exterior wall) vent applications. Refer to the section relating to your installation.

Vertical Termination Systems (Roof)

The Figures 10 through 13 and the Vertical Vent Table illustrate the various vertical venting configurations that are possible for use with Superior's Discovery Series Top Vent Appliances. The maximum vertical height for the DS-36T system is 40' (12.2 m) above the top of the appliance. Figures 11, 12 and 13 along with the Vertical Vent Table identify; (A) straight vertical system; (B) vertical system that employs two (2) 90° elbows and (C) vertical system that employs three (3) 90° elbows. The Vertical Vent Table summarizes each system's minimum and maximum vertical and horizontal values that can be used to design and install the vent components in a variety of applications. All three of these vertical vent systems terminate through the roof. The minimum vent height above the roof and/or adjacent walls is specified by major building codes. Always consult your local codes for specific requirements. A general guide to follow is the Gas Vent Rule (Refer to Figure 14).

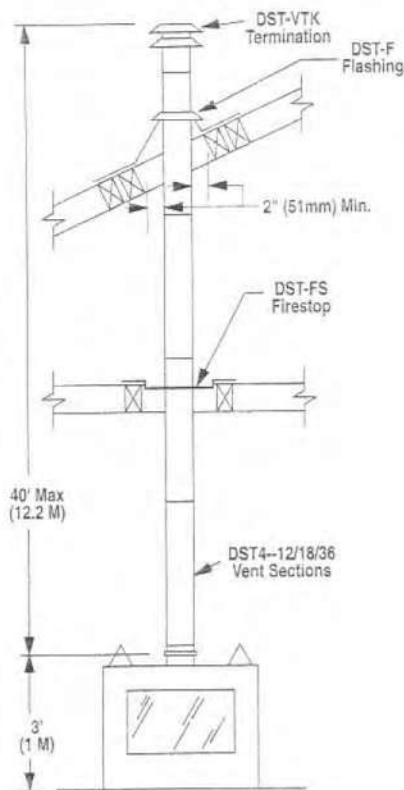


Figure 10

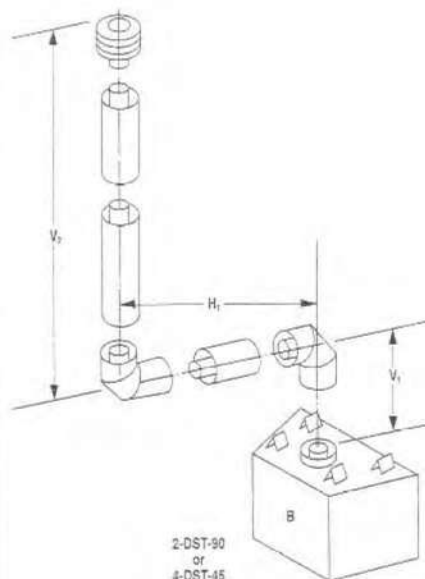


Figure 11 (90° Offsets Shown)

VERTICAL VENT TABLE
(All values are in feet)

A	B/C	B	C
V Max.	V ₁ Min.	H ₁ Max.	H ₁ +H ₂ Max.
40	1	2	5
	2	4	10
	3	6	15
	4	8	20
	5	21	20
V = V ₁ + V ₂ = 40 Feet Max.			

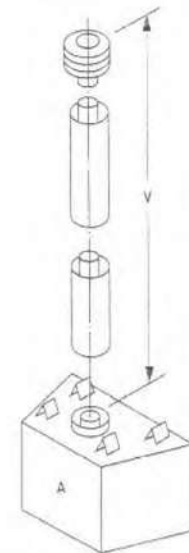


Figure 12 Straight

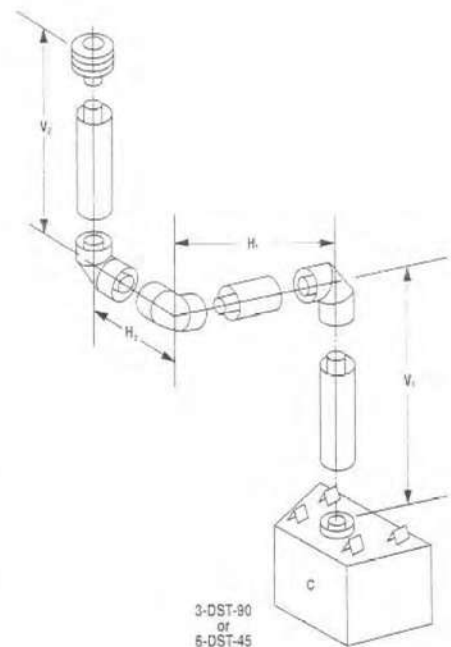


Figure 13 (90° Offsets Shown)

NOTE: DIAGRAMS & ILLUSTRATIONS NOT TO SCALE

VERTICAL ELEVATION CHART

Height of Vent		Number of DST4 Vent Sections			Height of Vent		Height of Vent		Number of DST4 Vent Sections			Height of Vent	
IN	FT	12	18	36	MM	M	IN	FT	12	18	36	MM	M
10'	0' 10"	1	0	0	254	0.25	259 1/4'	21' 7 1/4"	0	1	7	6535	6.59
16"	1' 4"	0	1	0	406	0.41	264"	22' 0"	2	0	7	6706	6.71
20 3/4"	1' 8 3/4"	2	0	0	527	0.53	270"	22' 6"	1	1	7	6858	6.86
26 3/4"	2' 2 3/4"	1	1	0	679	0.68	277 1/4"	23' 1 1/4"	0	0	8	7042	7.04
34"	2' 10"	0	0	1	864	0.86	280 3/4"	23' 4 3/4"	2	1	7	7131	7.13
37 1/2"	3' 1 1/2"	2	1	0	953	0.95	288"	24' 0"	1	0	8	7315	7.32
44 3/4"	3' 3/4"	1	0	1	1137	1.14	294"	24' 6"	0	1	8	7468	7.47
50 3/4"	4' 3/4"	0	1	1	1289	1.29	298 3/4"	24' 10 3/4"	2	0	8	7588	7.59
55 1/2"	4' 1/2"	2	0	1	1410	1.41	304 3/4"	25' 4 3/4"	1	1	8	7741	7.74
61 1/2"	5' 1/2"	1	1	1	1562	1.56	312"	26' 0"	0	0	9	7925	7.93
68 3/4"	5' 3/4"	0	0	2	1746	1.75	315 1/2"	26' 3 1/2"	2	1	8	8014	8.01
72 1/4"	6' 1/4"	2	1	1	1835	1.84	322 3/4"	26' 10 3/4"	1	0	9	8198	8.20
79 1/2"	6' 1/2"	1	0	2	2019	2.02	328 3/4"	27' 4 3/4"	0	1	9	8350	8.35
85 1/2"	7' 1/2"	0	1	2	2172	2.17	333 1/2"	27' 9 1/2"	2	0	9	8471	8.47
90 1/4"	7' 1/4"	2	0	2	2292	2.29	339 1/2"	28' 3 1/2"	1	1	9	8623	8.62
96 1/4"	8' 1/4"	1	1	2	2445	2.45	346 3/4"	28' 10 3/4"	0	0	10	8807	8.81
103 1/2"	8' 1/2"	0	0	3	2629	2.63	350 1/4"	29' 2 1/4"	2	1	9	8896	8.90
107"	8' 11"	2	1	2	2718	2.72	357 1/2"	29' 9 1/2"	1	0	10	9081	9.08
114 1/4"	9' 6 1/4"	1	0	3	2902	2.90	363 1/2"	30' 3 1/2"	0	1	10	9233	9.23
120 1/4"	10' 1/4"	0	1	3	3054	3.05	368 1/4"	30' 8 1/4"	2	0	10	9354	9.35
125"	10' 5"	2	0	3	3175	3.18	374 1/4"	31' 2 1/4"	1	1	10	9506	9.51
131"	10' 11"	1	1	3	3327	3.33	381 1/2"	31' 9 1/2"	0	0	11	9690	9.69
138 1/4"	11' 6 1/4"	0	0	4	3512	3.51	385"	32' 1"	2	1	10	9779	9.78
141 3/4"	11' 9 3/4"	2	1	3	3600	3.60	392 1/4"	32' 8 1/4"	1	0	11	9963	9.96
149"	12' 5"	1	0	4	3785	3.79	398 1/4"	33' 1/4"	0	1	11	10116	10.12
155"	12' 11"	0	1	4	3937	3.94	403"	33' 7"	2	0	11	10236	10.24
159 3/4"	13' 3 3/4"	2	0	4	4058	4.06	409"	34' 1"	1	1	11	10389	10.39
165 3/4"	13' 9 3/4"	1	1	4	4210	4.21	416 1/4"	34' 8 1/4"	0	0	12	10573	10.57
173"	14' 5"	0	0	5	4394	4.39	419 3/4"	34' 11 3/4"	2	1	11	10662	10.66
176 1/2"	14' 8 1/2"	2	1	4	4483	4.46	427"	35' 7"	1	0	12	10846	10.85
183 3/4"	15' 3 3/4"	1	0	5	4667	4.67	433"	36' 1"	0	1	12	10998	11.00
189 3/4"	15' 9 3/4"	0	1	5	4820	4.82	437 3/4"	36' 5 3/4"	2	0	12	11119	11.12
194 1/2"	16' 2 1/2"	2	0	5	4940	4.94	443 3/4"	36' 11 3/4"	1	1	12	11271	11.27
200 1/2"	16' 8 1/2"	1	1	5	5093	5.09	451"	37' 7"	0	0	13	11455	11.46
207 3/4"	17' 3 3/4"	0	0	6	5277	5.28	454 1/2"	37' 10 1/2"	2	1	12	11544	11.54
211 1/4"	17' 7 1/4"	2	1	5	5366	5.37	461 3/4"	38' 5 3/4"	1	0	13	11728	11.73
218 1/2"	18' 2 1/2"	1	0	6	5550	5.55	467 3/4"	38' 11 3/4"	0	1	13	11881	11.88
224 1/2"	18' 8 1/2"	0	1	6	5702	5.70	472 1/2"	39' 4 1/2"	2	0	13	12002	12.00
229 1/4"	19' 1 1/4"	2	0	6	5823	5.82	478 1/2"	39' 10 1/2"	1	1	13	12154	12.15
235 1/4"	19' 7 1/4"	1	1	6	5975	5.98	485 3/4"	40' 5 3/4"	0	0	14	12338	12.34
242 1/2"	20' 2 1/2"	0	0	7	6160	6.16	489 1/4"	40' 9 1/4"	2	1	13	12427	12.43
246"	20' 6"	2	1	6	6248	6.25	496 1/2"	41' 4 1/2"	1	0	14	12611	12.61
253 1/2"	21' 1 1/4"	1	0	7	6433	6.43							

NOTE: DIAGRAMS & ILLUSTRATIONS NOT TO SCALE

Roof Slope	Minimum Height From Roof To Lowest Discharge Opening
Flat to 7/12	1' 0"
Over 7/12 to 8/12	1' 6"
Over 8/12 to 9/12	2' 0"
Over 9/12 to 10/12	2' 6"
Over 10/12 to 11/12	4' 0"
Over 11/12 to 12/12	5' 0"
Over 14/12 to 16/12	6' 0"
Over 18/12 to 20/12	7' 6"
Over 20/12 to 21/12	8' 0"

Figure 14

Gas Vent Rule

Gas vent caps that are located 8' or more from a portion of a building which extends at an angle greater than 45° upward from the horizontal may terminate in accordance with *Figure 14*, provided that in no case shall any discharge opening on the cap be less than 2' horizontally from the roof surface.

Vertical (straight) Installation

Determine the number of straight sections required. 10-3/4" (273 mm), 16-3/4" (425 mm) and 34-3/4" (883 mm) net section lengths are available. Plan the vent lengths so that a joint does not occur at ceiling or roof joists. Refer to the vertical elevation chart on page 6.

Note: The uncrimped end may be trimmed when necessary.

Vertical (Offset) Installation

Analyze the vent routing and determine the quantities of flue sections and number of elbows required. Refer to the Vertical Vent Table on page 6 to select the type of vertical installation desired. Flue sections are available in net lengths of 10-3/4" (273 mm), 16-3/4" (425 mm) and 34-3/4" (883 mm). Refer to the Vertical Elevation Chart on page 7 to determine available length combinations. Elbows are available as 90° and 45° configurations. Refer to *Figures 12 and 13* for the elbow dimensional specifications.

Maintain a minimum 2" (51 mm) clearance to combustible materials for all vertical elements. Clearance for all horizontal elements are; 3" (76 mm) on top, 2" (51 mm) on sides and 1" (25 mm) on the bottom.

Note: The uncrimped end may be trimmed when necessary.

A. Use a plumb line from the ceiling above the appliance to locate center of the vertical run. Cut and/or frame a 12" x 12" inside (305 mm x 305 mm) opening about this center mark (*Figure 15*).

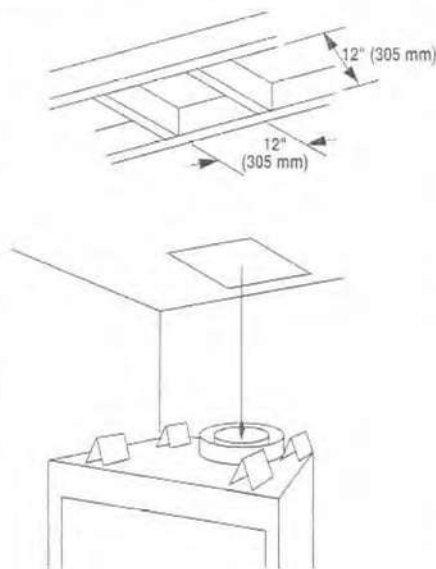


Figure 15

B. The vent sections are crimped at one end to provide slip fit elbows. Slide the 4" (102 mm) inner section onto the center appliance collar, bottoming out at the circular bead. (Crimped end always upward.) An elbow may also be attached to the appliance collar. Secure in the same manner as you would a flue section. Locate and transfer drill a 1/8" (3 mm) diameter hole through the collar at the two (2) punched holes (180° apart). Use No. 8 x 1/2" sheet metal screws to secure each section. Apply high temperature sealant to joint, being sure of a 100% seal. (Sealant such as DS-HTS or RTV silicone adhesive - 600°F.) (*Figure 16*)

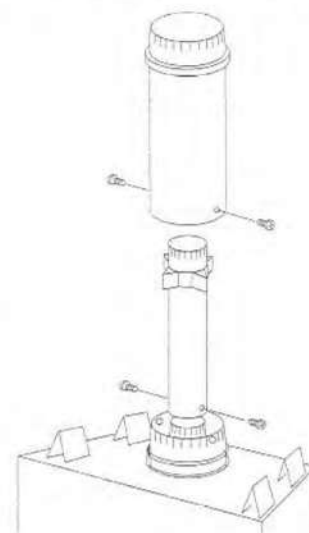


Figure 16

C. Next, slip the outer section over the inner and onto outer appliance collar, bottoming out at the bead. Secure using sheet metal screws.

D. Add additional sections in same manner described in steps B and C except overlap will be approximately 1-1/4" (32 mm) and section will not bottom on bead. Be sure to seal each inner joint with a high temperature sealant and place two (2) screws in outer joint only as the system builds. Always check that centering spacer is properly seated.

E. At transition to a horizontal or inclined run, the DST-90ELB/DST-45ELB elbows install in the same manner as the straight flue sections. Slip the inner elbow over the straight flue section and apply high temperature sealant to the joint. Slide the outer elbow over the inner elbow and slip down over the outer flue section. Drill, fasten and seal as in steps B and C. To add flue sections, start with the 4" (102 mm) inner section and slide it over the inner elbow; an overlap of 1-1/4" (32 mm) is required. Seal with a high temperature sealant. Slide the 7" (178 mm) outer section over the outer elbow; a 1-1/4" (32 mm) overlap is required, and secure with two (2) No. 8 x 1/2" sheet metal screws.

F. Continue with the installation of the straight flue sections in horizontal/inclined run as described in Step E. Install support straps every 6' (2 m) using conventional plumber's tape. **It is very important that the horizontal run be maintained in a level plane.** Use a carpenter's level to measure from a consistent surface and adjust the support straps as necessary. **It is important to maintain the required clearances to combustibles; 2" (51 mm) on all sides for all vertical runs and 3" (76 mm) on top; 2" (51 mm) on sides; and 1" (25 mm) on the bottom for all horizontal runs.**

G. Use a DST-FS firestop spacer at ceiling joists. If there is living space above the ceiling level, the firestop spacer must be installed on the bottom side of the ceiling. If attic space is above the ceiling, the firestop spacer must be installed on the top side of the joist. Route the vent sections through the framed opening and secure the firestop spacer with 8d nails at each corner. Remember to maintain 2" (51 mm) clearance to combustibles, framing members, attic or ceiling insulation included.

H. Identify location for vent at the roof. Cut and/or frame opening per Roof Framing Chart.

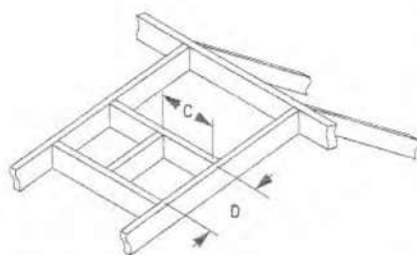


Figure 17

Framing Dimensions For Roof

Pitch	C	D
0/12	12" (305 mm)	12" (305 mm)
6/12	12" (305 mm)	12" (305 mm)
12/12	12" (305 mm)	17 3/4" (305 mm)

I. Extend the vent sections through the roof structure. Install the roof flashing over the vent section and position such that the vent column rises vertically (use carpenter's level) (Figure 18). Nail along perimeter to secure flashing or adjust roofing to overlap the flashing edges at top and sides only and trim where necessary. Seal the top and both sides of the flashing with waterproof caulking.

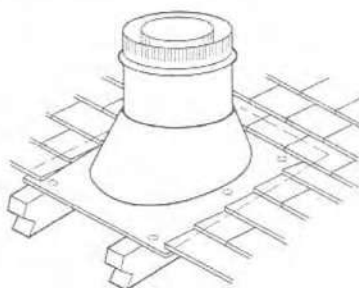


Figure 18

J. Install the storm collar, supplied with the flashing, over the vent/flashing joint. Wrap the storm collar around the vent noting which locking groove closely aligns with the tab (Figure 19). Pencil mark excess material, unwrap and trim excess with shears. Reposition collar, insert tab through both slots, pull tab so that collar is tight around vent. Slide collar down until it meets top of the flashing. Bend tab back over slot. Apply noncombustible caulking or mastic around circumference of the joint and the tab slot area to provide a water tight seal.

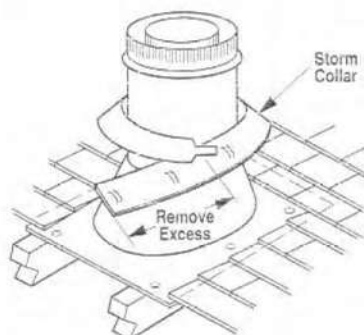


Figure 19

K. The final step involves installation of the DST-VTK termination kit. Extend the vent sections to height defined by the applicable gas appliance code, or as indicated by the Gas Vent Rule. Center the termination over the last vent section and slip down over both tubes. Engagement (overlap) should be a minimum of 1-1/4" (32 mm) (Figure 20).

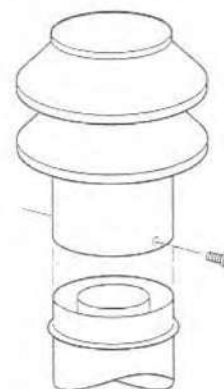


Figure 20

The two (2) holes in the outer sleeve are used to secure the termination. Transfer drill 1/8" diameter hole through outer wall of top vent section. Secure with No. 8 x 1/2" sheet metal screws. Apply sealant at the seam.

If the vent system extends more than 5' (1.5 m) above the roof flashing, stabilizers may be necessary. Additional screws may be used at section joints for added stability. Guy wires may be attached to the joint for additional support on multiple joint configurations.

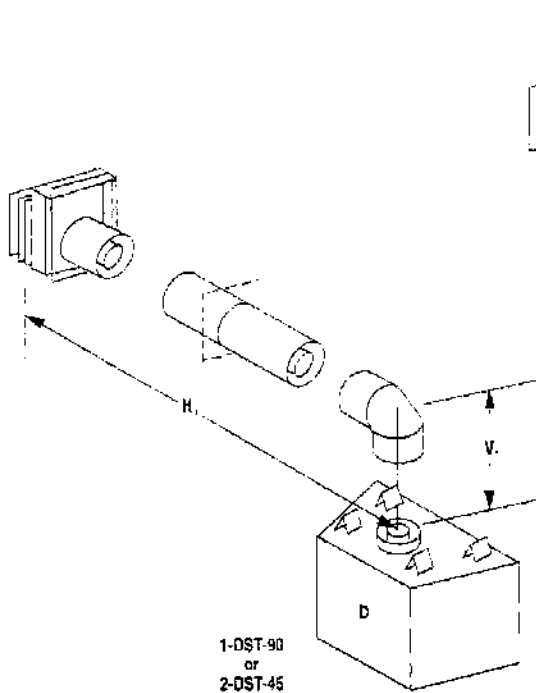


Figure 21 (90° Offsets Shown)

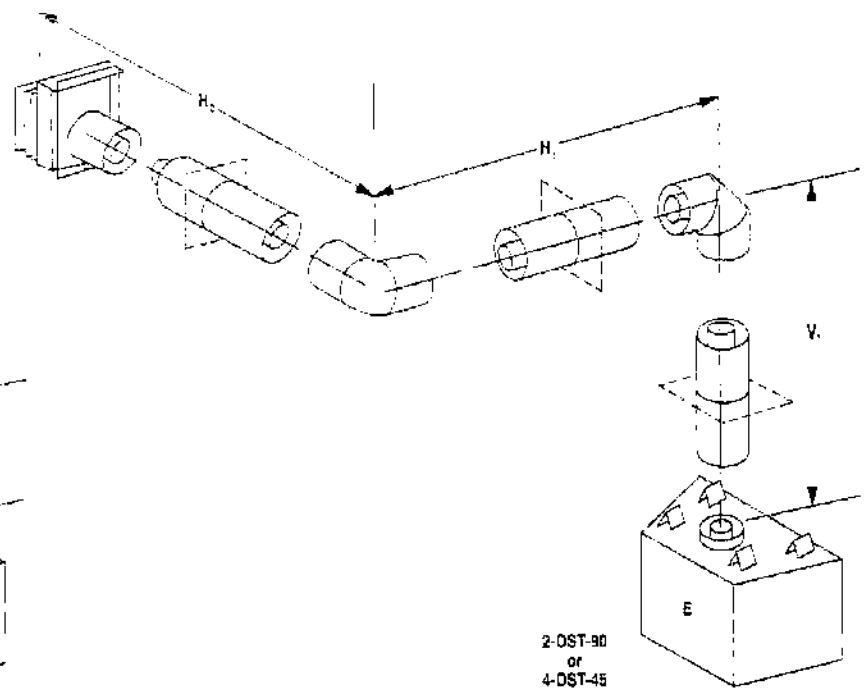


Figure 22 (90° Offsets Shown)

HORIZONTAL VENT TABLE
(All values are in feet)

D/E	D	E	F	F	F
V_1 Min.	H_1 Max.	$H_1 = H_2$ Max.	$V_1 + V_2$ Min.	H_1 Max.	$H_1 + H_2$ Max.
1	6	6	1	2	5
2	12	12	2	4	10
3	18	18	3	6	15
4	24	24	4	8	20
5	24	24	5	8	20

$V = V_1 + V_2 = 20$ Feet Max.

NOTE: DIAGRAMS & ILLUSTRATIONS NOT TO SCALE

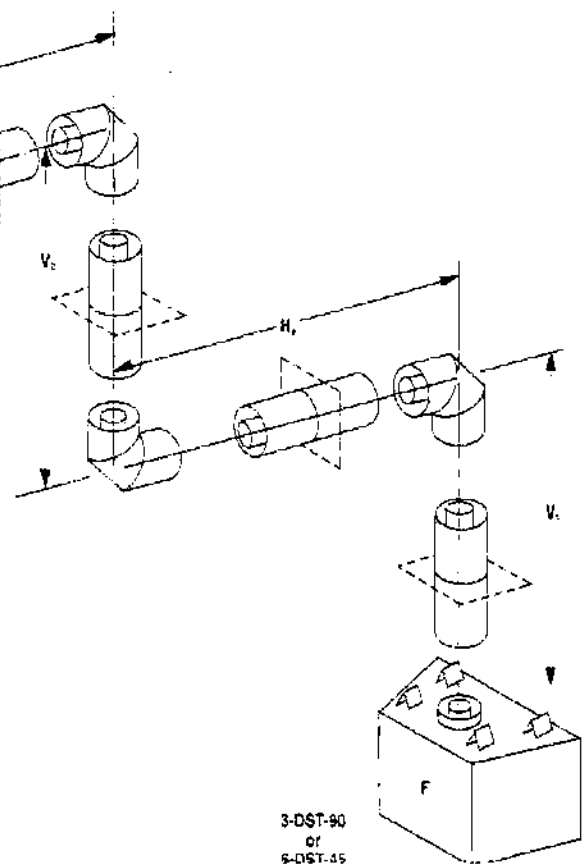


Figure 23 (90° Offsets Shown)

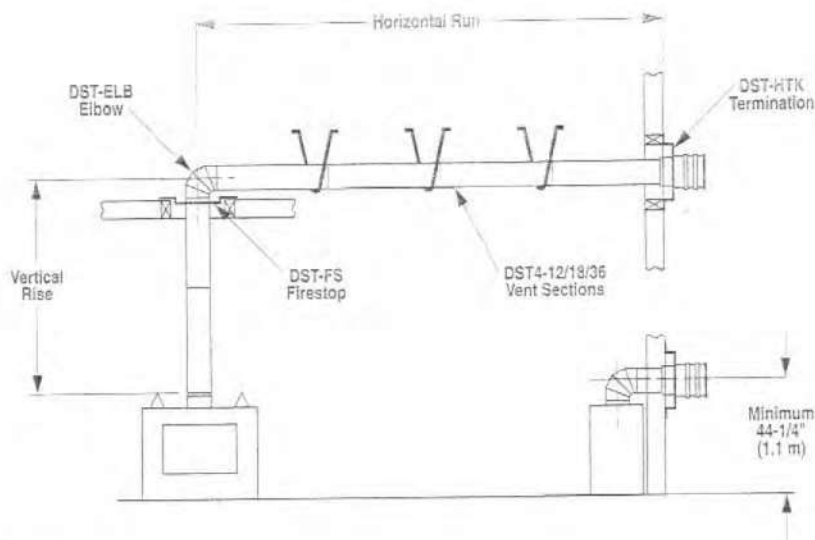


Figure 24

Horizontal (Outside Wall) Termination System

Figures 21 through 24 and the Horizontal Vent Table illustrate the various horizontal venting configurations that are possible for use with Superior's Discovery Series Top Vent Appliances. The maximum horizontal distance for the DS-36T system is 24' (7.3 m). Figures 21, 22 and 23 along with the Horizontal Vent Table identify: (D) horizontal system employing one (1) 90° elbow; (E) horizontal system employing two (2) 90° elbows and (F) horizontal system employing three (3) 90° elbows. The horizontal Vent Table summarizes each system's minimum and maximum vertical and horizontal values that can be used to design and install the vent components in a variety of applications. All three of these horizontal vent systems terminate through an outside wall. Building Codes limit or prohibit terminating in specific areas. Refer to Figure 9 for location guidelines.

The vent termination must have a minimum of 3" (76 mm) clearance to any overhead combustible projection of 2-1/2" (64 mm) or less. Maintain 12" (305 mm) clearance from projections exceeding the 2-1/2" (64 mm) (Reference Figure 25).

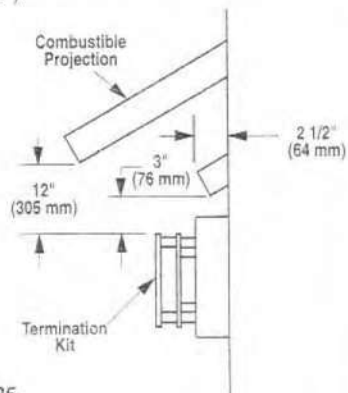


Figure 25

A. Analyze the vent routing and determine the types and quantities of sections required. Venting is available in 10-3/4" (273 mm), 16-3/4" (425 mm) and 34-3/4" (883 mm) net section lengths. Make allowances for elbows as indicated in Figure 26. Maintain a minimum 2" (51 mm) clearance to combustibles on the vertical sections. Clearances for the horizontal runs are: 3" (76 mm) on top, 2" (51 mm) on sides, and 1" (25 mm) at the bottom.

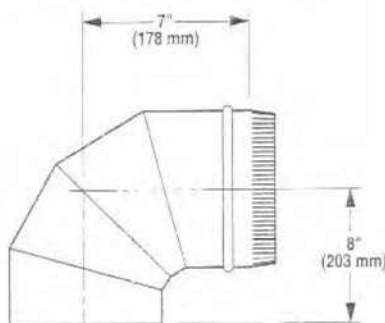


Figure 26

B. Locate the center of the vent outlet on the exterior wall. Cut and/or frame a 12" x 12" (305 mm x 305 mm) inside opening about the center. Install firestop (supplied with the termination) at outer surface with indicated "top" surface in up position. (Figure 28)

C. If the vertical route is to penetrate a ceiling, use plumb line to locate the center above the appliance. Cut and/or frame a 12" x 12" (305 mm x 305 mm) inside opening about the center. (Reference Figure 15).

D. At the ceiling opening, mount a DST-FS firestop to the underside surface of framing. (Position firestop at the top side only in attic space.)

E. The vent elbow sections are crimped at one end to provide slip-fit assembly. Slide the 4" (102 mm) inner section onto the center collar, bottoming out at the circular bead. (Crimped end always upward.) Locate and drill 1/8" (3 mm) diameter hole through the collar at the two (2) punched holes (180° apart). Use No. 8 x 1/2" sheet metal screws, to secure each section. Apply high temperature sealant to the joint, being sure of 100% seal. (Sealant such as DS-HTS or RTV silicone adhesive - 600°F) (Figure 27).

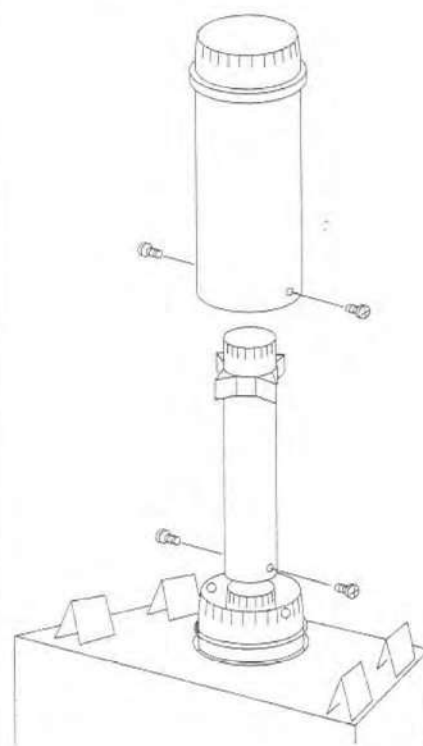


Figure 27

F. Next, slip the outer section over the inner and onto the outer collar, bottoming out at the bead. Use two (2) sheet metal screws to secure the 7" (178 mm) outer section as shown in Figure 26.

G. To add additional sections, start with the 4" (102 mm) inner section. Slide it over the inner vent from the previous section; a 1-1/4" (32 mm) overlap is required. Seal with high temperature sealant. Slide the 7" (178 mm) outer section over the previous section and secure with two (2) sheet metal screws.

Note: The uncrimped end may be trimmed when necessary.

H. At transition to horizontal, the DST-90ELB/DST-45ELB elbows install in same manner as the straight sections. Where ceiling joists are present, extend vertical run through the firestop sufficiently to maintain required clearance to combustibles, described in A, on the horizontal run. Slip the internal elbow over the inner straight section. Apply high temperature sealant to joint. (Figure 28)

The elbow may be mounted to the top of the appliance where direct connection to the outside wall is necessary. See inset at Figure 24. Slide the outer elbow over the inner and slip down over the outer vertical section. Drill, fasten and seal as in Steps E and F.

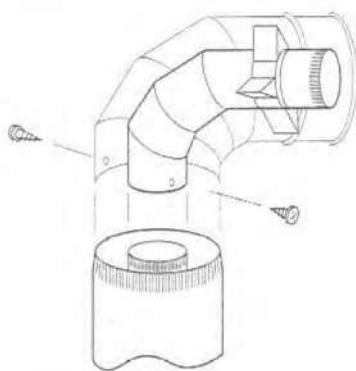


Figure 28

I. Continue with installation of the straight sections in horizontal run as described in Step G. Install support straps every 6' (2 m) using conventional plumbers tape. It is **important** that the horizontal run be maintained in a level line. Use a carpenter's level or measure from a consistent surface and adjust the support straps as necessary. Maintain required clearances to combustibles.

J. If not previously measured, locate the center of the vent line at the exterior wall. Prepare opening as described in B. Assemble the vent system to a point where last section is within 2" (51 mm) to 6-1/2" (165 mm) inboard the exterior "finished" surface, see Figure 29b.

Note: The uncrimped end may be trimmed when necessary.

Slide each connector tube (supplied with the termination package) onto its respective vent section, bottoming out at the bead. Apply high temperature sealant to the inner connector.

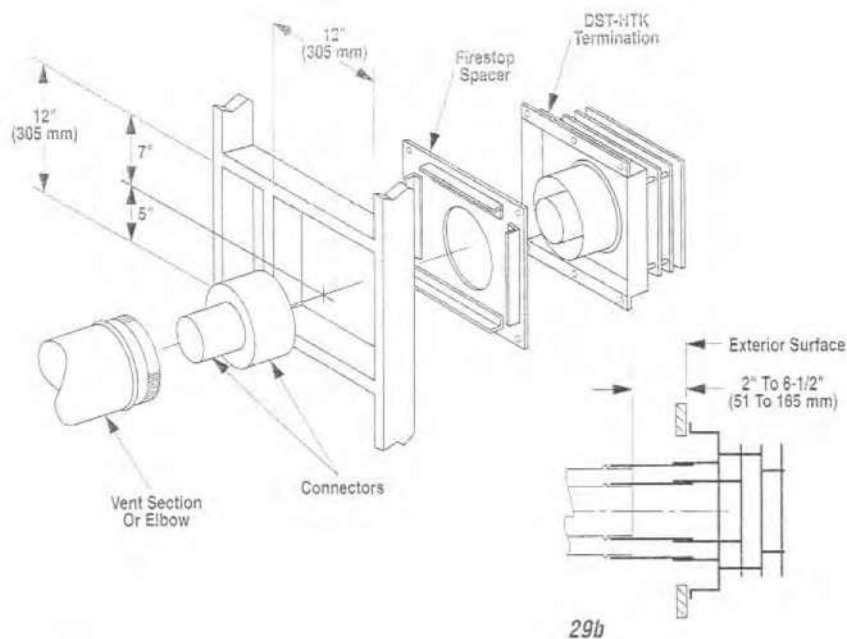


Figure 29

K. To install the DST-HTK apply a liberal bead of high temperature caulking at the perimeter mounting flange for sealing purposes. Orient the housing with surface marked "top" upward. Visually align at the opening and carefully insert to engage over both inner and outer connector tubes. Slide inward until the housing bottoms at the finished exterior wall. Secure with 6d nails at holes in upper and lower flanges (Figure 29).

Step 5. Installing Remote Wall Switch – The appliance is shipped with all the internal wiring completed at the factory. Select a convenient location for the remote wall switch and connect the wiring found on the appliance (Figure 30).

CAUTION: DO NOT CONNECT THE REMOTE SWITCH TO A 120V POWER SUPPLY.

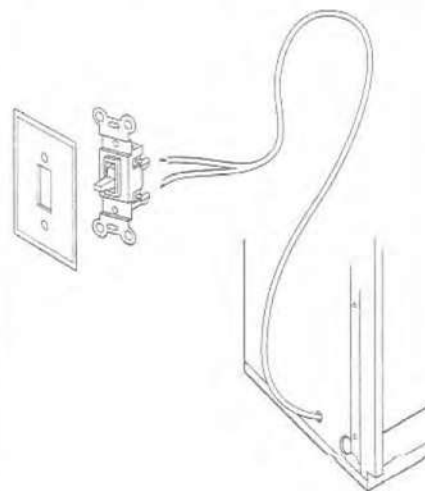
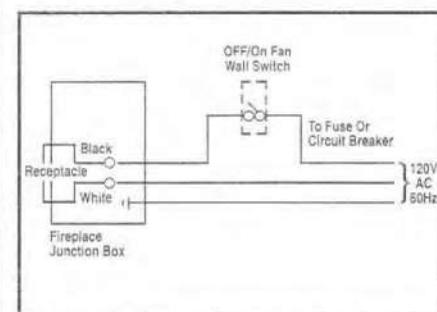


Figure 30

NOTE: DIAGRAMS & ILLUSTRATIONS NOT TO SCALE

Step 6. A junction box is provided for the installation of the FAK-1500 Forced Air Kit (optional). Electrical power must be provided to support the fan.

Route a 3-wire, 120VAC power line with control switch to the lower right side of the appliance. Make connections to the receptacle as shown in Figure 31.



Fan Wiring Diagram

Figure 31

The appliance must be electrically grounded in accordance with local codes or, in the absence of local codes, either the National Electrical Code, ANSI/NFPA 70-1987. (In Canada, the current CSA C22-1 Canadian Electrical Code.)

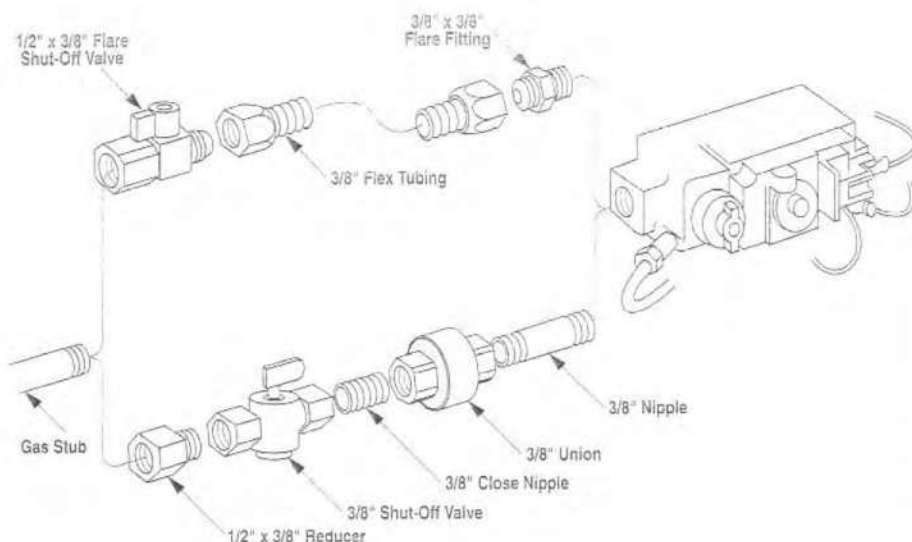


Figure 32

Step 7. Connecting gas line – Make gas line connections. All codes require a shut-off valve mounted in the supply line. Figure 32 illustrates two methods for connecting the gas supply. The flex-line method is acceptable in the U.S., however, Canadian requirements vary depending on locality. Installation must be in compliance with local codes.

The gas control valve is located under the refractory shelf. If previously installed, remove the two (2) bottom louvers by unsnapping the bottom edge at each end and set aside (Figure 33). The control valve has a 3/8" (10 mm) NPT thread inlet port. Plan the connections accordingly.

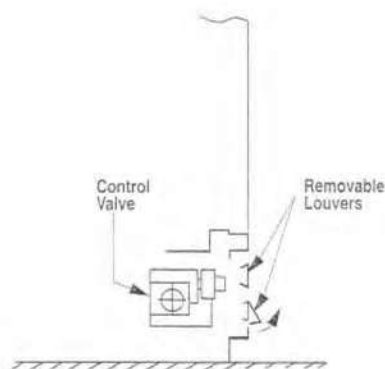


Figure 33

Secure all joints tightly using appropriate tools and sealing compound. Leak check the installation with a soapy water solution. **DO NOT USE OPEN FLAME FOR LEAK TEST.**

High Elevation Derating

This unit has been tested for installation at high altitudes in accordance with Canadian test standard CAN/CGA-2.17.

Higher altitudes affect the atmospheric pressure and heat value of gaseous fuels. When installing this unit at high altitudes, the rated input will be lower than that at sea level. The lowered oxygen content in the air and lowered gas density require installation of a different orifice to achieve efficient, clean combustion at the burner assembly. Refer to the following chart and Figure 34 and/or the rating plate on the appliance for proper orifice size.

Order and install the appropriate high altitude orifice kit per the chart below. Be sure to attach the conversion sticker to the rating plate on the appliance.

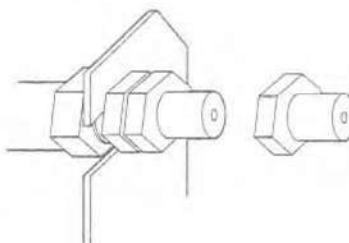


Figure 34

Gas Type	Orifice Size	High Alt Orf. Kit	Elevation
Natural	#42	—	0 - 2000' (0 - 610 m)
	#43	P/N 040617	2000 - 4500' (610 - 1370 m)
Propane	#55	—	0 - 2000' (0 - 610 m)
	#56	P/N 027967	2000 - 4500' (610 - 1370 m)

U.S. per ANSI Z223.1-1992

Canada per CAN/CGA 2.17-M91.

Step 8. Log installation – The logs, screen and embers kit are packaged in a separate shipping container. Remove the mineral fiber material from its packaging and spread across the burner tray, covering the front hole pattern area.

Carefully position and center the fiber logs onto the burner with the longer log in front. Place the two (2) smaller fiber logs across the two (2) lower logs in the manner illustrated (Figure 35). The flames should not impinge on the logs.

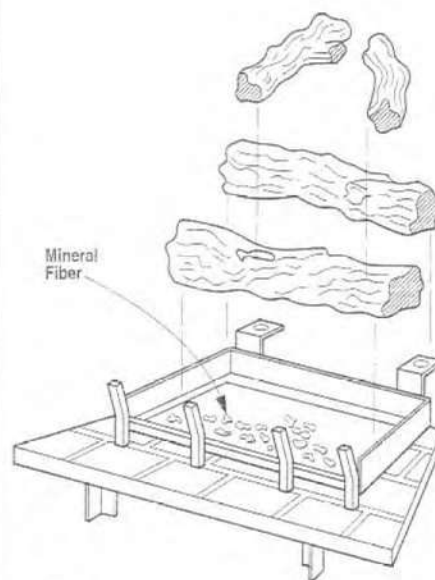


Figure 35

Step 9. Checking the system - With gas line installed and the remote switch connected, run initial system checkout before closing up the front of the unit. Follow the pilot lighting instructions on page 16.

Note: Instructions are also found on the pull out panel located on the bottom surface of the appliance.

When first lighting the appliance, it will take a few minutes for the line to purge itself of air. Once purging is complete, the pilot and burner will light and operate as indicated in the instruction manual. Subsequent lightings of the appliance will not require such purging. Inspect the pilot flame (remove logs, if necessary, handling carefully).

The flame should be steady, not lifting or floating. Flame should be blue in color with traces of orange at the outer edge.

The top 3/8" (10 mm) at the pilot generator (thermopile) should be engulfed in the pilot flame and the flame should project 1" (25 mm) beyond the hood on both sides (Figure 36).

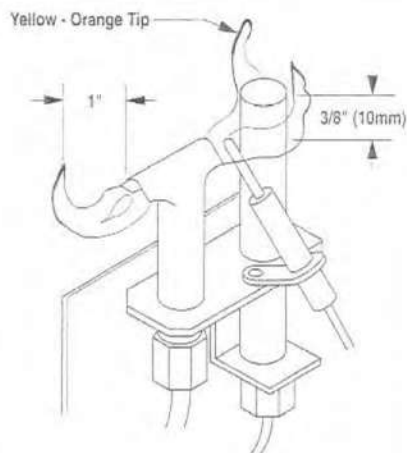


Figure 36

Replace logs if removed for pilot inspection.

To light the burner; turn "on" the remote wall switch, manually depress and hold the door safety switch (Figure 37) and rotate the control knob counterclockwise to the "ON" position ("ON" will be at the bottom side of the valve).

Note: The safety switch must be held closed for burner operation.

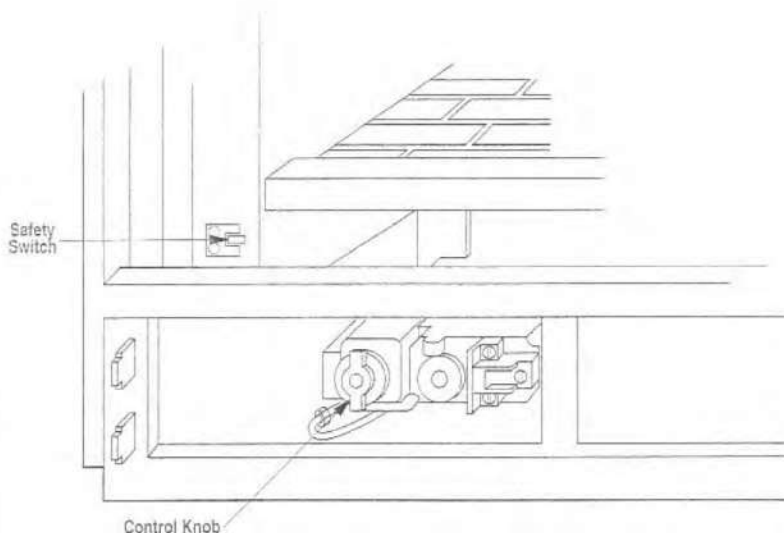


Figure 37

To obtain proper operation, it is imperative that the main burner characteristics are steady (Figure 38). The flame should produce a clear, bright orange/yellow flame.

No smoke or soot elements should be visible. If questionable, check with your service man or gas supplier. The flames should not impinge on the logs, reposition them if necessary.

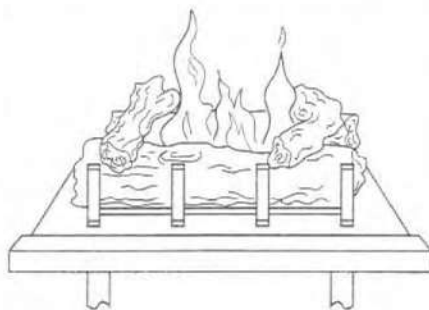


Figure 38

CAUTION: DO NOT ATTEMPT TO REDUCE OR ALTER THE FLAME BY POSITIONING THE GAS VALVE IN OTHER THAN THE FULL "ON" POSITION.

The air shutter on the venturi tube has been set at the factory for both natural and propane gas models (Figure 39). The shutter is set at fully closed position for natural gas, and at the half open position for propane gas. Make adjustments to the shutter only as necessary to produce, orange/yellow flame.

Note: Any adjustments to the air shutter different from those described above could cause the burner assembly to malfunction and could void the warranty.

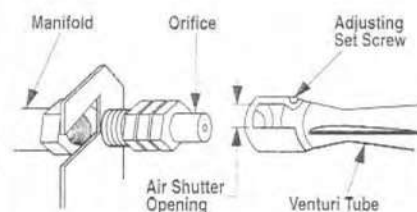


Figure 39

When satisfied that the appliance operates properly, proceed to finish the installation. Leave the control knob in "ON" position, turn the remote switch "OFF". Snap the two (2) louvers back in place at the bottom of the unit.

Step 10. Installing the Glass Panel – Retrieve the glass panel. Visually inspect the gasket on the backside of the panel. Gasket surface must be clean and free of irregularities and seated firmly in U-channel.

Position the panel at the front opening with the corner flanges at the top, extending toward the appliance. Carefully insert the panel into the lower cavity, aligning the three (3) pins on bottom of door with corresponding holes in the bottom surface. Tilt top toward appliance, inserting formed flanges into the rectangular openings at each side of combustion chamber opening. Assemble the spring and washer over bolt. Insert and fasten to nut plate at the rear of the opening (Figure 40). Start the bolt by hand, then tighten each bolt until bottomed out for uniform pressure on the panel seal. The bottom of the bolt head should be 2-1/2" (64 mm) from the door flange.

Make sure the bolts on both sides are tightened equally to avoid torquing the door.

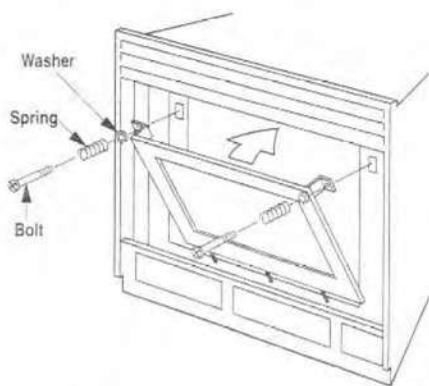


Figure 40

WARNING: HANDLE THIS GLASS WITH EXTREME CARE! TEMPERED GLASS IS SUSCEPTIBLE TO DAMAGE — DO NOT SCRATCH WHILE HANDLING OR WHILE RE-INSTALLING THE GLASS PANEL.

Step 11. Installing the Screens - Two (2) mesh screen panels and mounting hardware are packaged in the carton with the logs. Slip the rings on each screen over the mounting rod, positioning the brass pull at the formed/bent end. Insert the straight end into hole in sidewall and fasten to frame with sheet metal screw at mounting hole approximately 4" (102 mm) from each end (Figure 41).

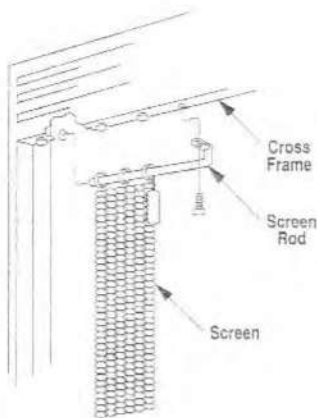


Figure 41

Step 12. Installing the Louvers & Trim – Remove the four (4) black louver strips and the two (2) brass cover pieces from the protective container and fasten to the face of the appliance. The louver strips snap onto the louver pegs without the need for tools. To assemble, tilt the strip on top of the pegs and snap lower edge to lock in place. The brass pieces are mounted over the support bars directly above and below the appliance opening.

A gas valve cover is included in the homeowner's information kit envelope to hide the gas controls located in the lower left louvered area. Slide cover onto lower louver and position so as to conceal controls (Figure 42).

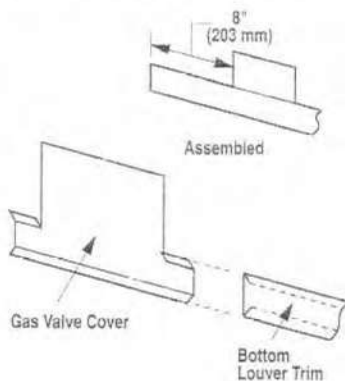


Figure 42

FINISHING REQUIREMENTS Wall Details

Complete finished interior wall. To install the appliance facing flush with the finished wall, position framework to accommodate the thickness of the finished wall (Figures 43 and 44).

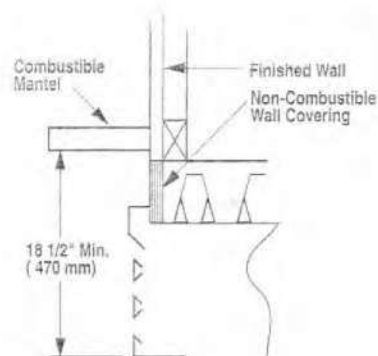


Figure 43

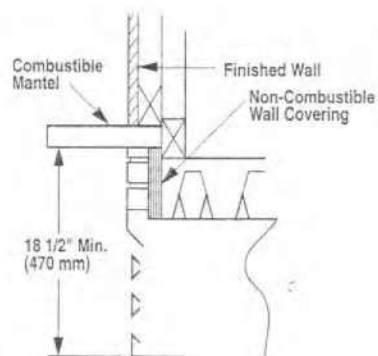


Figure 44

A hearth extension is not required with this appliance. If a hearth extension is used, do not block the lower louvered area.

A combustible mantel shelf projecting a maximum of 8" (203 mm) from the wall may be installed a minimum distance of 18-1/2" (470 mm) above the appliance opening (Figure 45).

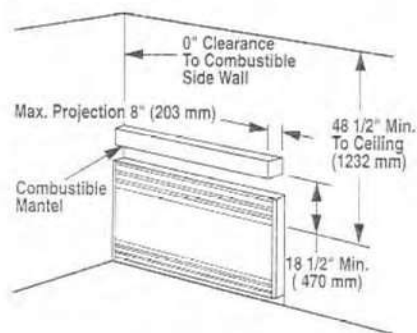


Figure 45

Note: For Canadian installations, 6" (152 mm) clearance to combustible side wall required.

COLD CLIMATE INSULATION

If you live in a cold climate, seal all cracks around your appliance with non-combustible material and wherever cold air could enter the room. It is especially important to insulate outside chase cavity between studs and under floor on which appliance rests, if floor is above ground level.

ACCESSORIES Forced Air Kits

The FAK-1500 and FAK-3000 assemblies provide a forced air circulation feature for your appliance. These kits mount directly into the lower intake chamber with electrical connection at receptacle provided. The appliance must have an independent 120VAC power line incorporated at the time of installation. Refer to Step 6 of the installation instructions supplied with the forced air kits (Figures 46 and 47).

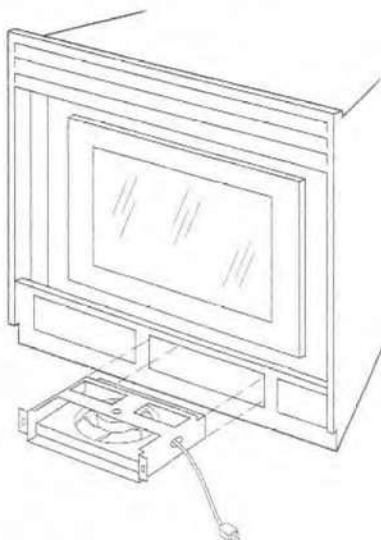


Figure 46

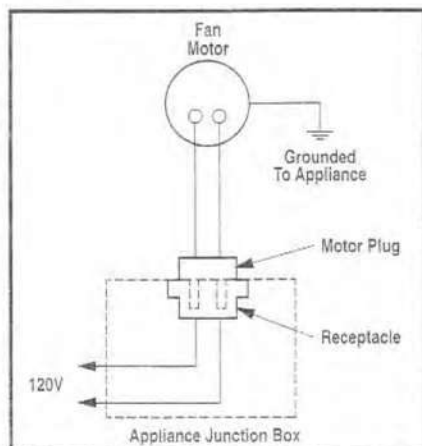


Figure 47

Variable Speed Wall Switch

Refer to the installation instructions provided with the Variable Speed Wall Switch, Model VSWS, for installation details.

Enclosure panel

The optional 35GEP-SPB Front Panel adds an elegant appearance to your appliance. The solid polished brass trim frames the fire and blends with any decor. The panel mounts flush with the front for that custom finished look.

Horizontal Trim Kits

Decorative trim kits designed to enhance the appliance are available in the following finishes: 35HTK-PB polished brass and 35HTK-SPB solid polished brass. The 35TT-SPB and 35TTK-SPB kits include polished brass filigree panels.

Remote Control

The Model RCK adds the convenience of remote control for your appliance. The kit includes a wireless, hand held transmitter and a receiver that installs in the appliance. A special wall switch permits either manual or remote control modes. Both receiver and transmitter operate on standard 9 volt batteries (not included). Refer to the RCK installation instruction for specific details.

OPERATION AND CARE OF YOUR APPLIANCE

1. There is a micro switch behind the lower left corner of the glass enclosure panel. This safety feature prevents the burner from operating unless the glass panel is in place.
2. Appliance operation is controlled through the remote mounted wall switch. Adjustments or settings at the unit are not required. A separate wall switch provides independent control of the forced air fan (optional equipment).
3. When lit for the first time, the appliance will emit a slight odor for an hour or two. This is due to the "curing" of the logs and "burn-in" of internal paints and lubricants used in the manufacturing process.
4. Upon each lighting of the appliance, condensation may occur and fog the inside of the glass enclosure. This condition will disappear shortly as the appliance heats.
5. Keep lower control compartment clean by vacuuming or brushing at least twice a year.

6. Always turn off gas to pilot before cleaning. Before re-lighting, refer to the lighting instructions in this manual. Instructions are also found on a pull-out panel located on the floor of the appliance (behind louvers).

7. Always keep the appliance area clear and free from combustible materials, gasoline and other flammable liquids.

8. Remember, this appliance has a continuous burning pilot flame. Exercise caution when using products with combustible vapors.

9. Never obstruct the flow of ventilation air. Keep the front of the appliance clear of all obstacles and materials.

10. Observe caution near the glass panel. The panel utilizes tempered glass which may shatter unexpectedly or if struck with any object.

11. CAUTION: DO NOT OPERATE THIS APPLIANCE WITH A BROKEN GLASS PANEL. Where broken glass exists, the complete front panel must be replaced. See the Replacement Parts List on page 22 for correct parts. Panel removal and re-assembly instructions are described on pages 3 and 15 respectively.

12. Clean the glass only when necessary. Wipe surface with clean, dampened, soft cloth. Follow with dry, soft towel as desired. Take care not to scratch the glass surface. Do not use abrasive cleaners. Never clean the glass when it is hot.

WARNING: CHILDREN AND ADULTS SHOULD BE ALERTED TO THE HAZARDS OF HIGH SURFACE TEMPERATURES. USE CAUTION AROUND THE APPLIANCE TO AVOID BURNS OR CLOTHING IGNITION. YOUNG CHILDREN SHOULD BE SUPERVISED WHEN THEY ARE IN THE SAME ROOM AS THE APPLIANCE.

MAINTENANCE

The appliance and venting system should be inspected before use and at least annually by a qualified service person.

IMPORTANT: TURN OFF GAS AND ANY ELECTRICAL POWER BEFORE SERVICING THE APPLIANCE.

The main burner compartment should be inspected annually for proper operation. Remove front panel and perform general cleaning to remove any surface build-up on pilot and burner assembly. Wipe the pilot nozzle, igniter rod and hood (Figure 36). Avoid disturbing the loose ember material on the base of the burner.

Refer to Step 10 for the front panel installation. On re-assembly, examine the sealing gasket on the front panel for signs of deterioration, cracks or hardening. Replace if any evidence is apparent. Replace only with material identified in the Replacement Parts List on page 22. When returning to service, verify proper flame characteristics as described in Step 9, reference Figures 36 and 38.

With proper care and maintenance, your appliance will provide many years of enjoyment. If you should experience any problem, first refer to the trouble shooting guide in this manual. If problem persists, contact your local service center.

WARRANTY

Your gas appliance is covered by a one year limited warranty. You will find a copy of the warranty in this manual. Please read the warranty to be familiar with its coverage.

Retain this manual. File it with your other documents for future reference.

REPLACEMENT PARTS

A complete parts list is found at the end of this manual. Use only parts manufactured and/or approved by Superior Fireplace Company.

Normally, all parts should be ordered through your Superior distributor or dealer. Parts will be shipped at prevailing prices at time of order.

When ordering repair parts, always give the following information:

1. The model number of the appliance.
2. The part number.
3. The description of the part.
4. The quantity required.
5. The installation date of the appliance.


SUPERIOR'S ACCESSORY PARTS AND COMPONENT LIST FOR DS-36 SERIES APPLIANCES

The following accessory parts and components are to be used only with this appliance system. Separate installation instructions are packaged with all forced air kits, glass doors and vent terminations.

If you encounter any problems or have any questions concerning the installation or application of this system, please contact your distributor. For the name of your nearest distributor contact:

Superior Fireplace Company
4325 Artesia Avenue
Fullerton, CA 92633
(714) 521-7302




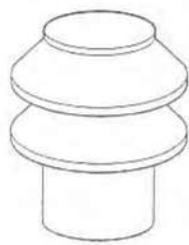
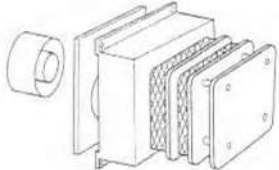
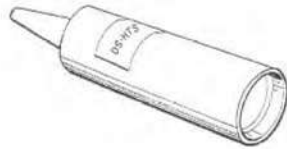
Model	Part Number	Weight
DS-36TN	P/N 045661	115 lbs.
DS-36TP	P/N 045662	115 lbs.

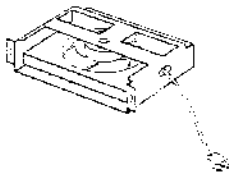
	P/N 047031	DST4-12
	P/N 047032	DST4-18
	P/N 047033	DST4-36
	Vent Sections	

	P/N 047071	DST-90ELB
Vent Elbow		

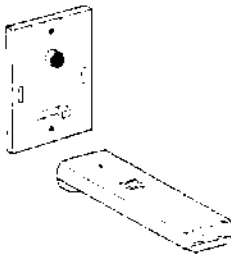
	P/N 050151	DST-45ELB
Vent Elbow		

NOTE: DIAGRAMS & ILLUSTRATIONS NOT TO SCALE

	P/N 045901	DST-FS
Firestop		
		
	P/N 046961	DST-F
Flashing		
	P/N 047121	DST-VTK
Vertical Termination		
	P/N 046711	DST-HTK
Horizontal Termination		
	P/N 093206	DS-HTS
Sealant (3 oz.)		



Forced Air Kit P/N 011781 FAK-1500
P/N 045421 FAK-3000



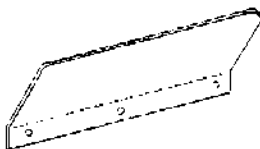
Remote Control Kit P/N 035591 RCK



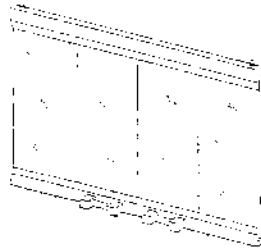
Variable Speed
Wall Switch P/N 045571 VSW



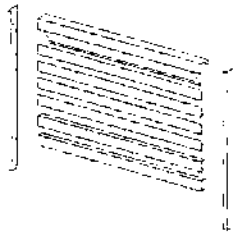
High Altitude
Orifice Kit P/N 040617 Natural
P/N 027967 Propane



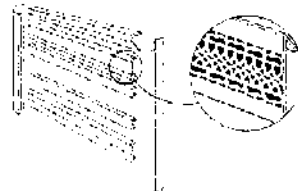
Vinyl Wall Shield P/N 049931 DS-VS



"ALL-GLASS"
Enclosure Panel P/N 043552 35GEP-SPB



Horizontal Trim Kit P/N 024474 35HTK-PB
P/N 024477 35HTK-SPB



Traditional Louver
and Trim Kit P/N 045651 35TT-SPB
P/N 046091 35TTK-SPB

TROUBLE SHOOTING THE GAS CONTROL SYSTEM MODEL DS-36T

Note: Before trouble shooting the gas control system, be sure external gas shut off valve (located at gas supply inlet) is in the "ON" position.

SYMPTOM	POSSIBLE CAUSES	CORRECTIVE ACTION
1. Spark ignitor will not light pilot after repeated triggering of red button.	A. Defective ignitor (no spark at electrode).	Check for spark at electrode and pilot; if no spark and electrode wire is properly connected, replace ignitor.
	B. Defective or misaligned electrode at pilot (spark at electrode).	Using a match, light pilot. If pilot lights, turn off pilot and trigger the red button again. If pilot lights, an improper gas mixture caused the bad lighting and a longer purge period is recommended. If pilot will not light – check gap at electrode and pilot - should be 1/8" to have a strong spark. If okay, replace pilot (Figure 31).
2. Pilot will not stay lit after carefully following the lighting instructions.	A. Defective pilot generator (thermopile) or remote wall switch.	Check pilot flame, it must impinge on pilot generator (Figure 31). Clean and/or adjust pilot for maximum flame impingement on generator.
		Be sure wire connections from generator at gas valve terminals are tight and generator is fully inserted into pilot bracket.
		One of the wall switch wires may be grounded. Remove wall switch wires from valve terminals. If pilot now stays lit, trace wall switch wiring for ground. May be grounded to appliance or gas supply.
		Check pilot generator with millivolt meter. Take reading at generator terminals of gas valve. Should read 325 millivolts minimum while holding valve knob depressed in pilot position and wall switch "OFF". Replace faulty pilot generator if reading is below specified minimum.
3. Pilot burning, no gas to burner, Valve knob "ON", Wall Switch "ON".	B. Defective automatic valve operator.	Turn valve knob to "ON", place wall switch to "ON". Millivolt meter should read greater than 100 mv. If the reading is okay and the burner does not come on, replace the gas valve.
	A. Wall switch or wires defective.	Check wall switch and wires for proper connections. Jumper wire across terminals at wall switch, if burner comes on, replace defective wall switch. If okay, jumper wires across wall switch wires at valve, if burner comes on, wires are faulty or connections are bad.
	B. Pilot generator may not be generating sufficient millivoltage.	Re-check Symptom #2.
	C. Plugged burner orifice.	Check burner orifice for stoppage and remove.
		Remove glass panel (see instructions).
		Remove Two (2) screws from switch mounting bracket, pull switch out.
		Jumper wire across terminals of switch.
		If burner comes on, switch defective. Replace.
4. Frequent pilot outage problem.	A. Pilot flame may be too low or blowing (high) causing the pilot safety to drop out.	Clean and/or adjust pilot flame for maximum flame impingement on pilot generator (Figure 31).

LIGHTING INSTRUCTIONS

FOR YOUR SAFETY READ BEFORE LIGHTING

WARNING: IF YOU DO NOT FOLLOW THESE INSTRUCTIONS EXACTLY, A FIRE OR EXPLOSION MAY RESULT CAUSING PROPERTY DAMAGE, PERSONAL INJURY OR LOSS OF LIFE.

A. This appliance has a pilot which must be lighted by hand. When lighting the pilot, follow these instructions exactly.

- Immediately call your gas supplier from a neighbor's phone. Follow the gas supplier's instructions.

B. BEFORE OPERATING smell all around the appliance area for gas. Be sure to smell next to the floor because some gas is heavier than air and will settle on the floor.

- If you cannot reach your gas supplier, call the fire department.

WHAT TO DO IF YOU SMELL GAS

- Do not try to light any appliance.
- Do not touch any electric switch; do not use any phone in your building.

C. Use only your hand to push in or turn the gas control knob. Never use tools. If the knob will not push in or turn by hand, do not try to repair it, call a qualified service technician. Force or attempted repair may result in a fire or an explosion.

D. Do not use this appliance if any part has been under water. Immediately call a qualified service technician to inspect the appliance and to replace any part of the control system and any gas control which has been under water.

LIGHTING INSTRUCTIONS

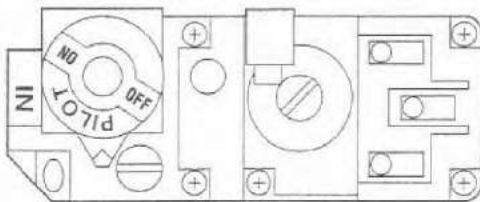
1. **STOP!** Read the safety information above on this page.

2. Turn remote wall switch to "OFF".

3. Remove access louvers.

4. Verify main line shut-off valve is open.

5. Push in gas control knob slightly and turn clockwise to "OFF".



Note: Knob cannot be turned from "PILOT" to "OFF" unless the knob is pushed in slightly. Do not force.

6. Wait five (5) minutes to clear out any gas. If you then smell gas, **STOP!** Follow "B" in the safety information above on this page. If you do not smell gas, go to the next step.

7. Turn knob on gas control counterclockwise to "PILOT".

8. Push in control knob all the way and hold in. Immediately light the pilot by triggering the spark ignitor (pushing red button) until pilot lights. Continue to hold the control knob in for about 1-1/2 minutes after the pilot is lit. Release knob and it will pop back up. Pilot should remain lit. If it goes out, repeat steps 5 through 8.

- If knob does not pop up when released, stop and immediately call your service technician or gas supplier.

- If pilot will not stay lit after several tries, turn the control knob to "OFF" and call your service technician or gas supplier.

9. Turn gas control knob counterclockwise to "ON".

10. Replace access louvers.

TO TURN OFF GAS TO APPLIANCE

1. Turn remote wall switch "OFF". The pilot will remain lit for normal service.

4. Depress gas control knob slightly and turn clockwise to "OFF". Do not force.

2. For complete shut-down, turn remote wall switch to "OFF".

5. Replace access louvers.

3. Remove lower louvers.

INSTRUCTIONS D'ALLUMAGE

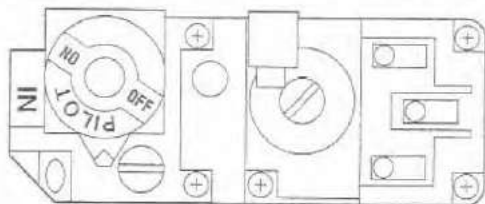
POUR VOTRE SÛRETÉ LISEZ AVANT L'ALLUMAGE

AVERTISSEMENT: SI VOUS NE SUIVEZ PAS EXACTEMENT CES INSTRUCTIONS, UN FEU OU UNE EXPLOSION POURRA CAUSER DOMMAGE DE PROPRIÉTÉ, BLESSURE PERSONNELLE OU PERTE DE VIE.

- A. Cet appareil a un pilote qui doit être allumé à la main. Quand vous allumez le pilote, suivez exactement les instructions.
- B. **AVANT D'ALLUMER** sentez autour de l'appareil pour le gaz. Assurez vous de la senteur près du plancher parce que certain gaz est plus pesant que l'air et se déposera sur le plancher.
- QUOI FAIRE SI VOUS SENTEZ LE GAZ:**
- N'essayez pas d'allumer l'appareil.
 - Ne touchez pas aucun connecteur électrique; ne vous servez pas d'aucun téléphone dans votre édifice.
 - Appelez votre fournisseur de gaz immédiatement d'un téléphone voisin. Suivez les instruction du fournisseur de gaz.
- C. Servez vous seulement de votre main pour engager ou tourner le bouton de réglage à gaz. N'employez jamais d'outils. Si le bouton n'engage pas ou tourne pas à la main, n'essayez pas de le réparer, appelez un technicien de service qualifié. Force et essai de réparation peut aboutir à un feu ou à une explosion.
- D. Ne vous servez pas de cet appareil si une partie à trappé dans l'eau. Appelez un technicien de service qualifié immédiatement pour inspecter l'appareil et remplacer n'importe quelle partie du système de commande et n'importe quel commande à gaz qui on été sous l'eau.

INSTRUCTIONS D'ALLUMAGE

1. **ARRÊTEZ!** Lisez l'information de sûreté au dessus de cette étiquette.
2. Tournez le télérupteur à "FERMÉ".
3. Retirer les volets d'accès.
4. Verifier que la vanne d'arrêt principale de gaz est ouverte.
5. Engagez le bouton de réglage à gaz légèrement et tournez dans le sens des aiguilles d'une montre à "FERMÉ".



Note: Le bouton ne doit pas être tourné de "PILOTE" à "FERMÉ" à moins que le bouton soit légèrement engagé. Ne forcez pas.

6. Attendez (5) minutes pour libérer le gaz. Si vous sentez du gaz, "ARRÊTEZ". Poursuivez "B" dans l'information de sûreté au dessus de cette étiquette. Si vous ne sentez pas de gaz, allez donc au prochain gradin.

7. Tournez le bouton sur le réglage à gaz en sens inverse des aiguilles d'une montre à "PILOTE".
8. Engage le bouton de réglage à gaz tout le long et retenez. Allumez le pilote immédiatement avec une allumette allumée ou en déclanchant l'étincelleuse (engagant le bouton rouge) avant que le pilote s'allume. Continuez se retenir le bouton de réglage pour à peu près 1-1/2 minutes apres que le pilote est allumé. Relachez le bouton et il va se relever sueitement. Le pilote devra rester allumé. Si el s'éteint, repetez le gradin 5 jusqu' à 8.
9. Tournez le bouton de réglage à gaz en sens inverse des aiguilles d'une montre à "OUVERT".
10. Remplacez les volets d'accès.

- Si le bouton ne se relève pas après avoir été relâché, arrêtez immédiatement et téléphonez votre technicien de service ou votre fournisseur de gaz.
- Si le pilote ne veut pas rester allumé après quelques essais. Tournez le bouton de réglage à gaz à la position "FERMÉ" et téléphonez votre technicien de service ou votre fournisseur de gaz.

FERMER LE GAZ À L'APPAREIL

1. Tournez le télérupteur mural à "FERMÉ". Le pilote va resté allumé jusqu' au retour du service normal.
2. Pour une fermeture complete, tournez le télérupteur mural à "FERMÉ".
3. Retirer les volets inférieurs.
4. Engagez le bouton de réglage à gaz légèrement et tournez dans le sens des aiguilles d'une montre à "FERMÉ". Ne forcez pas.
5. Remplacez les volets d'accès.

REPLACEMENT PARTS LIST

No.	DESCRIPTION	DS-36TN		DS-36TP	
		Part No.	Qty.	Part No.	Qty..
1.	Gas Fireplace Assembly	045671	1	045672	1
2.	Bar, Louver (black)	024501	4	024501	4
3.	Trim, Upper/Lower (brass)	037171	2	037171	2
4.	Screen Assembly		1		1
	Screen Panel/Pull	095883	2	095883	2
	Screen Rod - RH	037312	1	037312	1
	Screen Rod - LH	037311	1	037311	1
5.	Bolt	000817	2	000817	2
6.	Spring	097953	2	097953	2
7.	Washer	000703	2	000703	2
8.	Glass Frame Assembly with Gaskets	046021	1	064021	1
9.	Gasket - Top/Bottom	097961	2	097961	2
	Gasket - side	097962	2	097962	2
10.	Switch	097937	1	097937	1
11.	Control Panel Sub Assembly	043353	1	043353	1
12.	Refractory, Bottom	043431	1	043431	1
13.	Burner Assembly	046751	1	046753	1
14.	Log Set	043321	1	043321	1
	Front Log	041207	1	041207	1
	Rear Log	041202	1	041202	1
	Top Right Log	041194	1	041194	1
	Top Left log	041196	1	041196	1
15.	Wall Switch Kit	025972	1	025972	1
16.	Cover Plate	032381	1	032381	1
17.	Venturi	097506	1	097506	1

GAS CONTROLS

No.	DESCRIPTION	DS-36TN		DS-36TP	
		Part No.	Qty.	Part No.	Qty.
20.	Gas Valve - Robertshaw	009737	1	093771	1
21.	Piezo Igniter	091301	1	091301	1
22.	Orifice Fitting - Standard	094486	1	094485	1
	Orifice Fitting - High Altitude	040617	1	027967	1
23.	Thermopile	094699	1	094699	1
24.	Pilot Assembly	093761	1	093762	1
25.	Bulkhead Union	094502	1	094502	1
26.	Bulkhead Union	094501	1	094501	1
27.	Fitting	094499	2	094499	2

Superior DS-36 Direct Vent Gas Fireplace Limited Warranty 1 Year

THE WARRANTY

Superior Fireplace Company warrants this DS-36 Series Decorative Gas Appliance to be free from defects in materials and workmanship at the time of manufacture.

REMEDY AND EXCLUSIONS

The coverage of this Warranty is limited to all components of the decorative gas appliance manufactured by Superior Fireplace Company, with the exception of flame colorization devices, cement logs, and Superior glass enclosure panel.

This Warranty only covers Superior decorative gas appliances installed in the United States or Canada.

If the vented decorative gas appliance covered by this Warranty is found to be defective within one year from the date of installation (see Superior's right of investigation outlined below), Superior will, at its option, replace or repair defective components of the decorative gas appliance manufactured by Superior Fireplace Company at no charge and will also pay for reasonable labor costs incurred in replacing or repairing such components. If repair or replacement is not commercially practical, Superior will, at its option, refund the purchase price of the Superior decorative gas appliance. With respect to the glass enclosure panel, the remedies of this paragraph are available for 90 days from the date of installation.

This Warranty covers only parts and labor as provided above. In no case shall Superior Fireplace Company be responsible for materials, components, or construction which are not manufactured or supplied by Superior Fireplace Company, or for the labor necessary to install, repair, or remove such materials, components or construction. All replacement or repair components will be shipped F.O.B. the nearest Superior Fireplace Company factory.

QUALIFICATIONS TO THE WARRANTY

The vented decorative gas appliance Warranty outlined above is further subject to the following qualifications:

- (1) The vented decorative gas appliance must be installed in accordance with Superior Fireplace Company installation instructions and local building codes. The Warranty on this Superior vented decorative gas appliance covers only the component parts manufactured by Superior Fireplace Company. The use of components manufactured by others with this Superior vented decorative gas appliance (except for a listed venting system as prescribed in the installation instructions) could create serious safety hazards, may result in the denial of certification by recognized national safety agencies, and could be in violation of local building codes. This Warranty does not cover any damages occurring from the use of any components not manufactured or supplied by Superior Fireplace Company.
- (2) The Superior vented decorative gas appliance must be subjected to normal use. The decorative gas appliances are designed to burn either natural or propane gas only. Burning conventional fireplace fuels such as wood, coal, or any other solid fuel will cause damage to the decorative gas appliance, will produce excessive temperatures and will result in a fire hazard.

LIMITATION ON LIABILITY

It is expressly agreed and understood that Superior Fireplace Company's sole obligation and purchaser's exclusive remedy under this warranty, under any other warranty, expressed or implied, or in contract, tort or otherwise, shall be limited to replacement, repair, or refund, as specified above.

In no event shall Superior Fireplace Company be responsible for any incidental or consequential damages caused by defects in its products, whether such damage occurs or is discovered before or after replacement or repair, and whether or not such damage is caused by Superior Fireplace Company's negligence. Some states do not allow the exclusion or limitation of incidental or consequential damages, so the above limitation or exclusion may not apply to you. The duration of any implied warranty with respect to this Superior decorative gas appliance is limited to the duration of the foregoing warranty. Some states do not allow limitations on how long an implied warranty lasts, so the above may not apply to you.

INVESTIGATION OF CLAIMS AGAINST WARRANTY

Superior Fireplace Company reserves the right to investigate any and all claims against this Warranty and to decide upon method of settlement.

SUPERIOR FIREPLACE COMPANY NOT RESPONSIBLE FOR WORK DONE WITHOUT WRITTEN CONSENT

Superior Fireplace Company shall in no event be responsible for any warranty work done without first obtaining Superior's written consent.

DEALERS HAVE NO AUTHORITY TO ALTER THIS WARRANTY

Superior Fireplace Company's employees and dealers have no authority to make any warranties, not to authorize any remedies in addition to or inconsistent with those stated above.

HOW TO REGISTER A CLAIM AGAINST WARRANTY

In order for any claim under this Warranty to be valid, Superior Fireplace Company must be notified of the claimed defect in writing or by telephone to Superior Fireplace Company, attention Customer Service Department, 4325 Artesia Avenue, Fullerton, California 92633, Telephone: 714-521-7302, as soon as reasonably possible after the defect is discovered. Claims against this Warranty in writing should include the date of installation, and a description of the defect.

OTHER RIGHTS

This Warranty gives you specific legal rights, and you may also have other rights which vary from state to state.

Superior reserves the right to make changes at any time, without notice, in design, materials, specifications, prices and also to discontinue colors, styles and products. Consult your local distributor for fireplace code information.

Distributed By:

SUPERIOR
The Fireplace Company