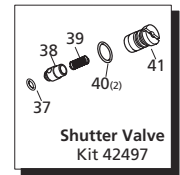
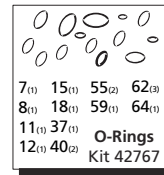
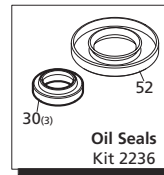
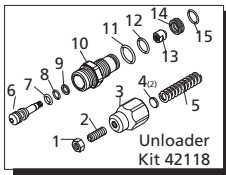


**Repair Kits**



| Pos | Code      | Description                     | Qty            | Pos | Code       | Description                    | Qty | Legend                    |
|-----|-----------|---------------------------------|----------------|-----|------------|--------------------------------|-----|---------------------------|
| 1   | AR1060120 | Nut M6                          | 1              | 42  | AR2840260  | Outlet extension               | 1   | SRMW22G26<br>SRMW22G26-EZ |
| 2   | AR392840  | Grub screw M6x16                | 1              | 43  | AR2840060  | Spring                         | 3   |                           |
| 3   | AR2760480 | Handle insert                   | 1              | 44  | AR2840040  | Piston                         | 3   |                           |
| 4   | AR1980220 | Plate spring                    | 2              | 45  | AR2840050  | Ring                           | 3   |                           |
| 5   | AR2760410 | Spring                          | 1              | 46  | AR1980130  | Thrust washer                  | 1   |                           |
| 6   | AR2841140 | Valve piston                    | 1              | 47  | AR1980250  | Bearing                        | 1   |                           |
| 7   | AR2260100 | O-Ring $\phi 6.02 \times 1.78$  | 1              | 48  | AR1980240  | Thrust washer                  | 1   |                           |
| 8   | AR660190  | O-Ring $\phi 6.07 \times 1.78$  | 1              | 49  | AR2840690  | Hollow shaft                   | 1   |                           |
| 9   | AR2760210 | Ring                            | 1              | 50  | AR161060   | Rear bearing                   | 1   |                           |
| 10  | AR2840750 | Piston guide                    | 1              | 51  | AR161050   | Circlip $\phi 172$             | 1   |                           |
| 11  | AR740290  | O-Ring $\phi 14 \times 1.78$    | 5              | 52  | AR2840310  | Seal                           | 1   |                           |
| 12  | AR820510  | O-Ring $\phi 10.82 \times 1.78$ | 1              | 55  | AR2840890  | O-Ring $\phi 14 \times 2$      | 2   |                           |
| 13  | AR2840760 | By-pass jet                     | 1              | 56  | AR1060100  | Ball                           | 1   |                           |
| 14  | AR2841080 | Seat                            | 1              | 57  | AR2840441  | Seal                           | 1   |                           |
| 15  | AR1470210 | O-Ring $\phi 9 \times 1$        | 1              | 58  | AR2840450  | Spring                         | 1   |                           |
| 17  | AR3700240 | Hose nipple                     | (35 in/lbs) 1  | 59  | AR600180   | O-Ring $\phi 7.66 \times 1.78$ | 1   |                           |
| 18  | AR480480  | O-Ring $\phi 4.48 \times 1.78$  | 1              | 60  | AR480650   | Washer                         | 1   |                           |
| 19  | AR1250280 | Ball                            | 1              | 61  | AR2840840  | Plug                           | 1   |                           |
| 20  | AR1560520 | Spring                          | 1              | 62  | AR2841520  | O-Ring $\phi 13.5 \times 1.8$  | 1   |                           |
| 21  | AR2840830 | Screw                           | 1              | 63  | TPP1401/4A | Thermal relief valve           | 1   |                           |
| 25  | AR2841540 | Plug                            | (221 in/lbs) 3 | 64  | AR3700250  | O-Ring $\phi 8 \times 1.1$     | 1   |                           |
| 26  | AR2849052 | Complete valve                  | 6              |     |            |                                |     |                           |
| 27  | AR2841740 | Pump head                       | 1              |     | AR64545    | Oil                            | 1   |                           |
| 28  | AR2200141 | Gasket                          | 3              |     |            | <i>OIL CAPACITY - 2.53 oz</i>  |     |                           |
| 29  | AR2840561 | Bushing                         | 3              |     |            |                                |     |                           |
| 30  | AR1683500 | Seal                            | 3              |     |            |                                |     |                           |
| 31  | AR2841240 | Plug 3/8" G - Brass             | 1              |     |            |                                |     |                           |
| 32  | AR2840520 | Pump housing                    | 1              |     |            |                                |     |                           |
| 33  | AR380410  | Head bolt M8x45                 | (221 in/lbs) 3 |     |            |                                |     |                           |
| 34  | AR2840220 | Suction fitting 3/4" NH         | 1              |     |            |                                |     |                           |
| 35  | AR2840250 | Suction extension               | 1              |     |            |                                |     |                           |
| 36  | AR7369    | Inlet filter                    | 1              |     |            |                                |     |                           |
| 37  | AR1460431 | O-Ring $\phi 4 \times 2.5$      | 1              |     |            |                                |     |                           |
| 38  | AR3700220 | Jet                             | 1              |     |            |                                |     |                           |
| 39  | AR3700210 | Spring                          | 1              |     |            |                                |     |                           |
| 40  | AR800560  | O-Ring $\phi 8.73 \times 1.78$  | 2              |     |            |                                |     |                           |
| 41  | AR3700200 | Detergent injector              | 1              |     |            |                                |     |                           |