

REMINGTON®

BAR & CHAIN MOUNTING, TENSIONING, AND MAINTENANCE INSTRUCTIONS

MODEL: MODSAW

As the forerunner in modern cutting chain design, development and production, Remington® is continuously developing new low-kickback, high performance cutting chains and guide bars. The bar or chain in this package meets the reduced kickback requirements of the American National Standards Institute Voluntary Safety Standard B175.1. This bar or chain is low-kickback when used on chainsaws for which it is offered (See Package).

IMPORTANT SAFETY INFORMATION



READ ALL KICKBACK WARNINGS ON THIS INSTRUCTION SHEET.



WARNING: GUARD AGAINST THE DANGER OF CHAINSAW KICKBACK.

Kickback can lead to dangerous loss of control of the chainsaw and result in serious injury to the saw operator or bystanders. Kickback is the sudden backward and/or upward motion of the chainsaw guide bar occurring when the saw chain near the nose or the top area of the guide bar contacts any object, such as another log or branch, or when the wood closes in and pinches the saw.

Continued

IMPORTANT SAFETY INFORMATION

Continued

NEVER attempt to operate a chainsaw without first receiving qualified operating and maintenance instructions.

NEVER let the tip of the bar and chain contact other objects while the chain is moving.

NEVER cut with loose or dull chain.

NEVER run the motor slowly at the start or during the cut.

NEVER cut in unsteady positions (off-balance, out-stretched arms, one-handed, over-reaching, on a ladder, or in a tree).

ALWAYS use Remington® low-kickback chain and bar.

ALWAYS read the owner's manual.

ALWAYS wear leather gloves, approved eye, ear, head, and face protection.

ALWAYS use both hands and a firm grip.



WARNING: Serious injury can result if manufacturer's instructions on saw chain maintenance, tensioning, and mounting are not followed. Read and follow all instructions supplied with chainsaw and those included in this instruction sheet. If chain is not tensioned correctly injury could result from the chain jumping off the bar.

DISASSEMBLY



WARNING: Cutting edges on chain are sharp. Use protective gloves when handling chain.

IMPORTANT: Do not clamp chain saw in vise during assembly or disassembly.

REMOVE OLD BAR AND CHAIN

1. Ensure chainsaw is unplugged and cool.
2. Loosen the guide bar nut (see Figure 1).

DISASSEMBLY

Continued

3. Turn chain tensioning screw counter-clockwise to loosen chain (see Figure 1).
4. Remove guide bar nut.
5. Remove sprocket cover (see Figure 1).
6. Rotate guide bar retainer so that it is positioned parallel to guide bar slot (see Figure 2).
7. Remove the old bar and chain.

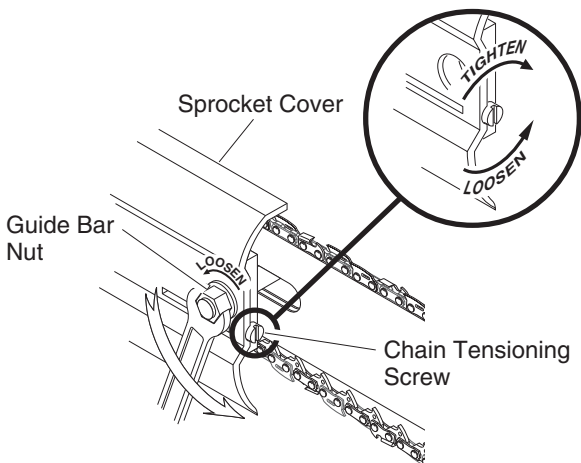


Figure 1 - Loosen and Remove Guide Bar Nut

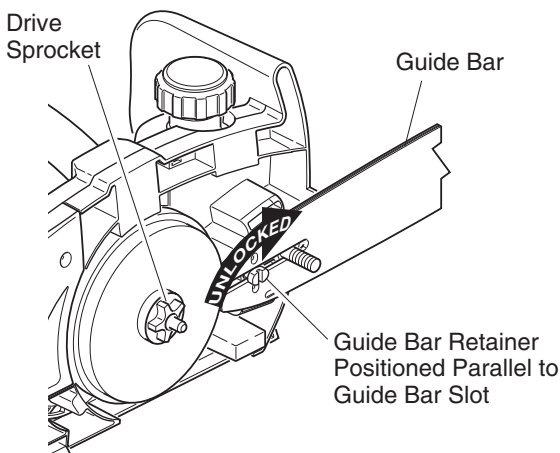


Figure 2 - Unlocking Guide Bar Retainer

ASSEMBLY

MOUNT BAR AND CHAIN

1. Rotate guide bar retainer so that it is positioned parallel to guide bar slot (see Figure 2).
2. Install guide bar onto saw body. Assemble center slot of guide bar onto guide bar bolt and guide bar retainer. **Note:** Make sure the head of the guide bar retainer slides through the guide bar slot as shown in Figure 2.
3. Rotate guide bar retainer 90 degrees as shown in Figure 3.

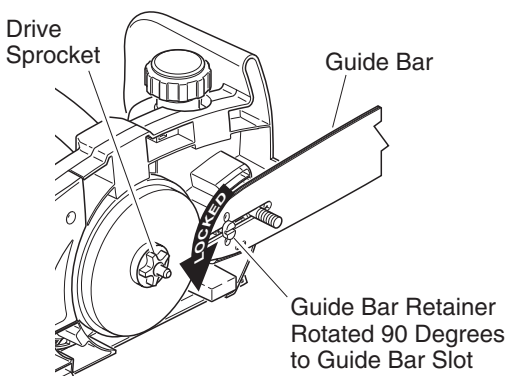


Figure 3 - Locking Guide Bar Retainer

4. Place chain around drive sprocket, along top groove of guide bar, and around guide bar nose. **Note:** Make sure cutting edges of chain are facing in right direction. Position chain so cutting edges on top of guide bar face guide bar nose (see Figure 4, and indicator on side cover of saw).

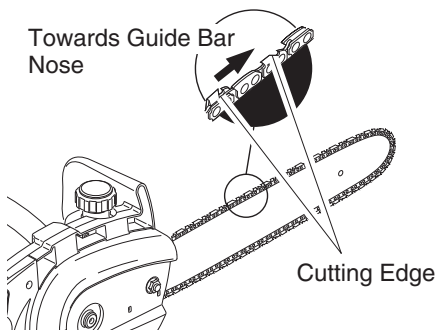


Figure 4 - Correct Chain Direction

ASSEMBLY

Continued

5. Insert tab of sprocket cover into slot on unibody and rotate sprocket cover onto guide bar bolt until sprocket cover rests against guide bar (see Figure 5).

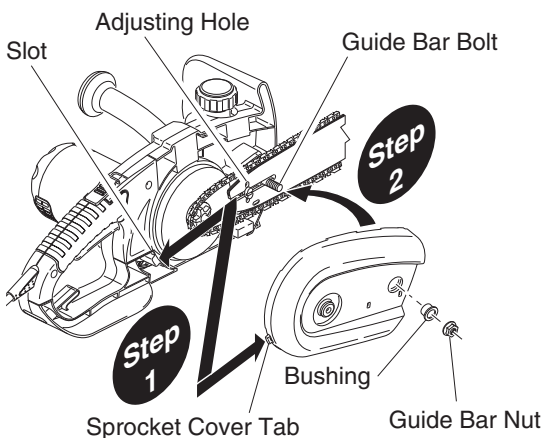


Figure 5 - Installing Sprocket Cover

6. Place guide bar nut, removed in step 2, on guide bar bolt.

IMPORTANT: Tighten guide bar nut finger tight only.

7. Turning chain tensioning screw, adjust position of adjustment block until it is aligned and inserted into the round adjusting hole on guide bar (see Figures 5 and 6). Turning screw counterclockwise will move adjustment block to rear of guide bar. Turning screw clockwise will move adjustment block to front of guide bar.

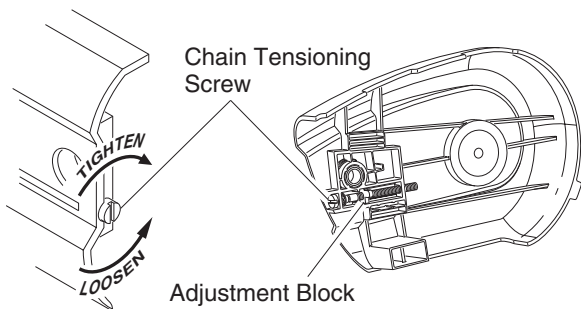


Figure 6 - Chain Tensioning Screw and Adjustment Block Location


Continued


ASSEMBLY


Continued

8. If needed, readjust guide bar nut to finger tight only.
9. Tighten chain tensioning screw to attain proper tension (see *Saw Chain Tension Adjustment*).

SAW CHAIN TENSION ADJUSTMENT

 **WARNING: Unplug chain saw from power source before adjusting saw chain tension.**

 **WARNING: Cutting edges on chain are sharp. Use protective gloves when handling chain.**

 **WARNING: Always maintain proper chain tension. A loose chain will increase the risk of kickback. A loose chain may jump out of guide bar groove. This may injure the operator and damage chain. A loose chain will cause chain, guide bar, and sprocket to wear rapidly.**

Chain tension is correct when the chain moves freely around the guide bar with a gloved hand. Chain should touch the underside of the guide bar rail.

A new chain will stretch. Check new chain frequently during the first few minutes of operation. Allow chain to cool down. Follow the steps below to readjust saw chain tension:

1. Loosen guide bar nut.
2. Ensure the adjustment block is in the adjusting hole on guide bar (see Figures 5 and 6).
3. Tighten chain tensioning screw clockwise until all slack is removed from chain. Chain should rest against the bottom of guide bar rail.

SAW CHAIN TENSION ADJUSTMENT

Continued

4. Pull chain away from the bottom of the bar approximately 1/8 inch (links should not come out of guide bar groove) and let go. The chain should return to rest against the guide bar rail (see Figure 7).
5. Make sure chain moves freely around guide bar then tighten guide bar nuts.

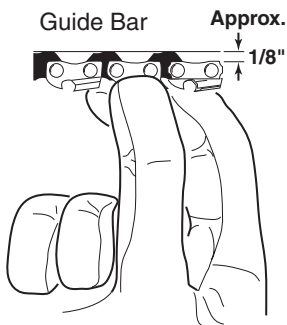


Figure 7 - Correct Chain Tension

MAINTENANCE INSTRUCTIONS

1. Check and readjust chain periodically during life of the chain.
2. Always check and adjust chain when cool, not hot.
3. Lubricate chain properly.
4. Keep oil reservoir full. Pump manual oiler before every cut.
5. Check and sharpen chain frequently. See owner's manual for sharpening procedure.

TECHNICAL SERVICE

You may have further questions about assembling, operating, or maintaining this product. If so, you can visit our Technical Service web site at **www.desatech.com** or contact our Technical Service Department at 1-800-858-8501 (English Only). You may also write to:

DESA Specialty Products™
ATTN: Technical Service Specialty Products
P.O. Box 90004
Bowling Green, KY 42102-9004

When contacting DESA Specialty Products™, have ready

- Your Name
- Your Address
- Your Phone Number
- Model Number of Product
- Date of Purchase (Include copy of receipt for written requests).



Bowling Green, KY 42102-9004
1-800-858-8501 (English Only)

www.desatech.com

DESA
Industries of Canada, Inc.

2220 Argentia Road
Unit #4
Mississauga, Ontario
L5N 2K7
905-826-8010
FAX 905-826-8236

www.desatech.com