

**MODEL NUMBERS:**  
**80-OFR / 125-OFR**



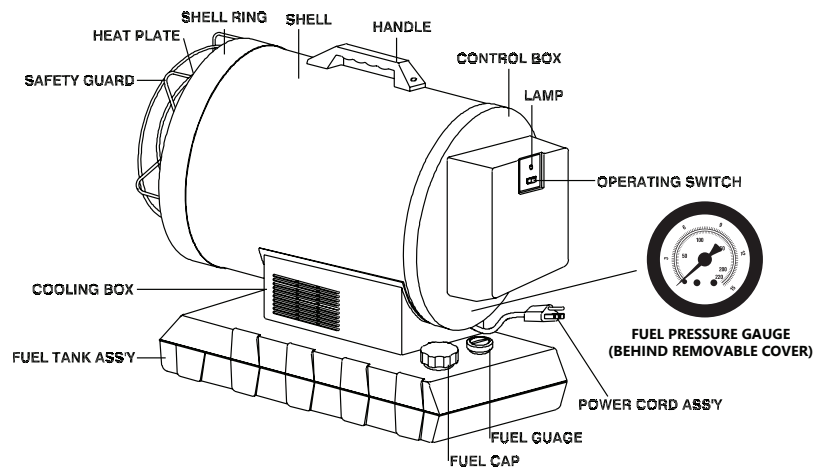
## SPECIFICATIONS

Model #	80-OFR	125-OFR
Rating: Btu/Hr	80,000	125,000
Fuel Consumption: Gal./Hr / L/Hr	0.63 / 2.38	0.85 / 3.22
Fuel Tank Capacity: Gal. / L	4 / 15.14	14 / 53
Max Operating Hours	6	16
Volts: AC/Hz	120 V / 60 Hz	120 V / 60 Hz
Amps	3.15	3.15
Heating Area: ft. <sup>2</sup>	2000	3125

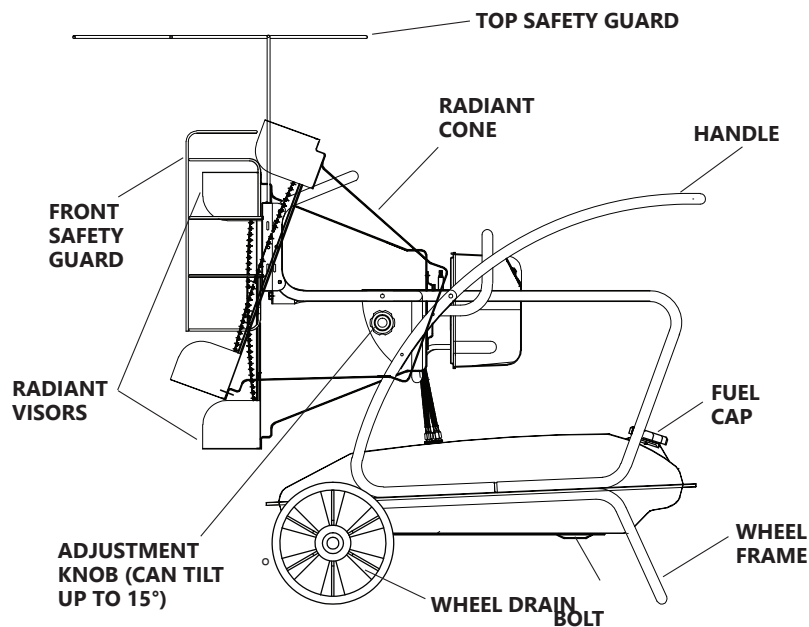
Specifications subject to change without notice.

## FEATURES

### 80-OFR

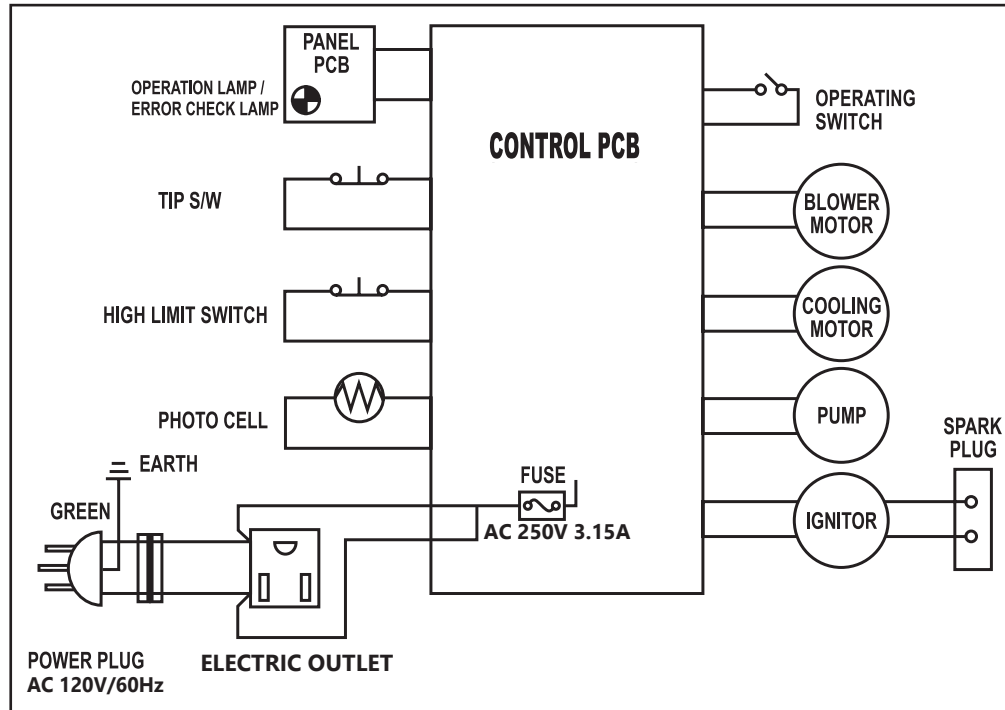


### 125-OFR

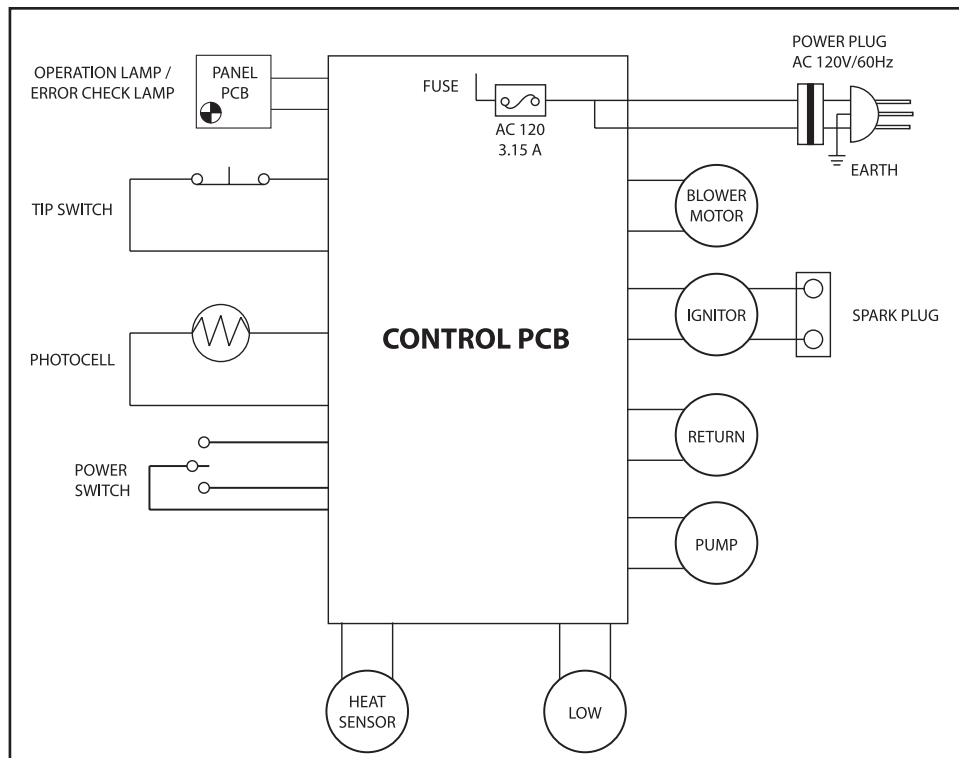


## WIRING DIAGRAMS

### *80-OFR*



### *125-OFR*

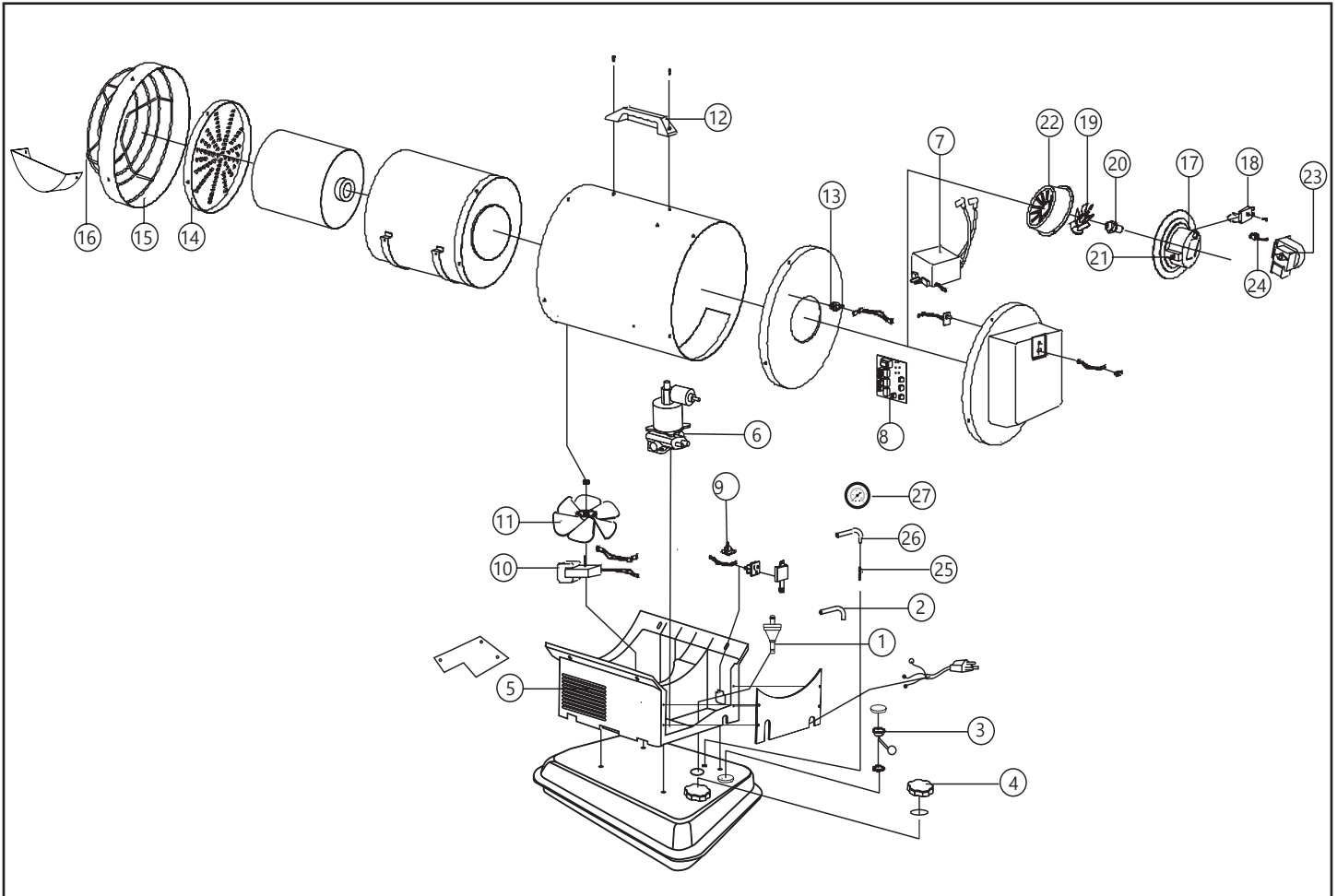


## TROUBLESHOOTING GUIDE

Problem	Possible Cause	Solution
Heater fires, but shuts down after a short period of time.	1. Dirty Fuel Filter. 2. Nozzle Dirty. 3. Photocell Dirty. 4. Photocell not installed properly. 5. Photocell Defective . 6. Improper electrical connection between Circuit Board and Photocell. 7. Cooling Fan is obstructed  8. Improper pressure.	1. Clean/replace Fuel Filter. 2. Clean/replace Nozzle 3. Clean/replace Photocell . 4. Adjust Photocell position. 5. Replace Photocell. 6. Check wiring connections (See Wiring Diagrams, Page 11). 7. Check to be sure cooling fan is not obstructed. 8. Adjust pump pressure.
Heater will not operate, or motor runs for short time.	1. No Kerosene/ diesel in fuel tank. 2. Corroded Spark Plug or incorrect plug gap. 3. Dirty Fuel Filter. 4. Dirty Nozzle. 5. Moisture in Fuel/Fuel Tank.  6. Improper electrical connection between Transformer and Circuit Board. 7. Transformer Wires not connected to Spark Plug. 8. Defective Transformer.	1. Fill tank with fresh Kerosene/ diesel. 2. Clean/replace Spark Plug.  3. Clean/replace Fuel Filter. 4. Clean/replace Nozzle. 5. Rinse out fuel tank with clean fresh Kerosene/ diesel. 6. Inspect all electrical connections. (See Wiring Diagrams, Page 11). 7. Re-attach Transformer wires to Spark Plug. 8. Replace Transformer.
Fan does not operate when heater is plugged in and Operating Switch is in the "ON" position.	1. Broken electrical connection between Circuit Board and motor. 2. Not enough amps available to power heater.	1. Inspect all electrical connections on Wiring Diagrams (Page 11). 2. Use a new extension cord or try another electrical socket.
Heater makes grinding noise.	1. Air in fuel pump.	1. Sound will stop after 3 seconds. If grinding sound continues, add fuel to tank.
Heater does not turn on and the lamp is not lit.	1. Temperature limit sensor has over-heated. 2. No electrical power.  3. Fuse break down. 4. Improper electrical connection between Temperature Limit Sensor and Circuit Board.	1. Push Operating Switch to "OFF" and allow heater to cool for 5 minutes. Push Operating Switch back to "ON". 2. Check power cord and extension cord to insure of proper connection. Test power supply. 3. Check/replace Fuse. 4. Inspect all electrical connections. (See Wiring Diagrams, Page 11).
Poor combustion and / or soot production.	1. Pump Pressure. 2. Poor fuel quality.	1. Be sure pump pressure is adjusted correctly. 2. Be sure Kerosene/ diesel is not old or contaminated.

## EXPLODED VIEW

**80-OFR**



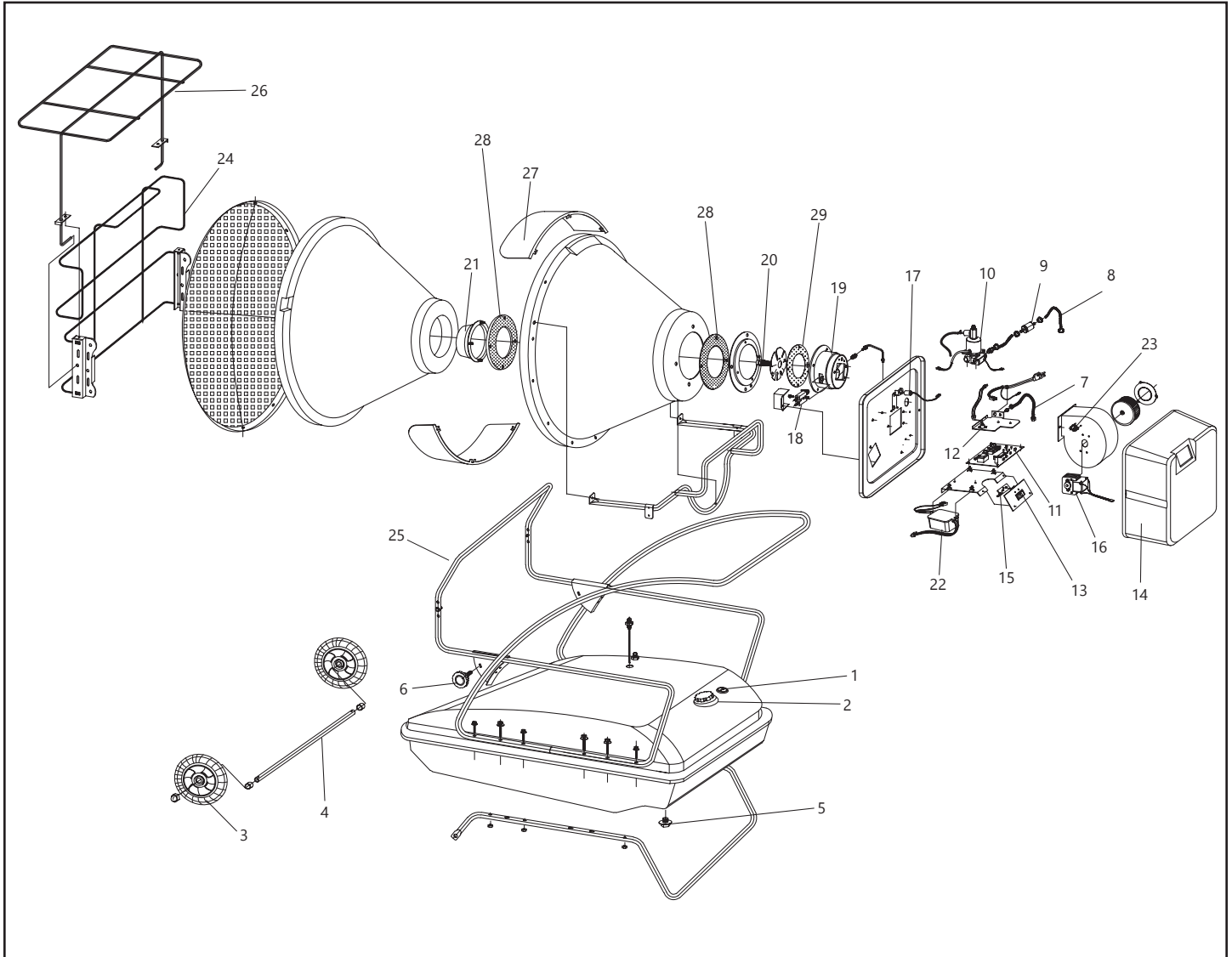
## **PARTS LIST:**

### ***80-OFR***

<b>Item #</b>	<b>Description</b>	<b>Part Number</b>
1	Fuel Filter	75-023-0285
2	Fuel Line	75-024-0740
3	Fuel Gauge	75-022-0210
4	Fuel Cap	70-006-0140
5	Cooling Fan Housing / Cooling Fan Housing Panel	75-011-0685 / 75-011-0690
6	Electric Pump	75-027-0650
7	Ignitor	70-037-0350
8	Main PCB Assembly	75-025-0490
9	Tip-Over Sensor	75-051-0200
10	Cooling Motor Assembly	75-047-0250
11	Cooling Fan	75-047-0200
12	Handle	75-001-0060
13	Temperature Limit Switch	75-040-0100
14	Heat Plate	75-012-0600
15	Shell Ring	75-011-0650
16	Safety Guard	75-012-0310
17	Burner Body	75-036-0180
18	Spark Plug	75-075-0200
19	Burner Blade	75-036-0120
20	Nozzle	75-036-0460
21	Nipple	75-040-0610
22	Diffusion Cap	42-300-0010
23	Blower Motor Assembly	75-045-0200
24	Photocell	72-038-0200
25	Return Pipe	75-055-0100
26	Return Hose	75-055-0205
27	Fuel Pressure Gauge	70-028-0200

## EXPLODED VIEW

### *125-OFR*



## **PARTS LIST:**

### ***125-OFR***

<b>Item #</b>	<b>Description</b>	<b>125-OFR-B</b>
1	Fuel Gauge Assembly	72-022-0100
2	Fuel Cap	70-006-0130
3	Wheel	70-041-1400
4	Axle	72-041-0200
5	Drain Bolt	72-002-0220
6	Height Adjustment Knob	72-042-0500
7	Return Fuel Line	72-023-0290
8	Intake Fuel Line	72-023-0280
9	Fuel Filter Assembly	72-020-0200
10	Fuel Pump	72-027-0100
11	Main PCB and Fuse	72-025-0450
12	Tip Over Sensor	75-051-0200
13	Power Switch	72-012-0120
14	Back Cover	72-013-0110
15	Panel sub-PCB	72-014-0100
16	Blower Motor Assembly	72-045-0100
17	Photocell	72-038-0200
18	Spark Plug	75-075-0200
19	Burner Body	72-035-0210
20	Nozzle	72-036-0100
21	Diffusion Cap	72-036-0210
22	Ignitor	70-037-0350
23	Temperature Overheat Sensor	72-040-0100
24	Safety Guard	72-012-0200
25	Front Frame	38-110-0010 & 38-110-0020
26	Top Safety Guard	72-012-0250
27	Radiant Visors	72-012-0220
28	Radiant Cone Gaskets	72-035-0630
29	Burner Housing Assembly	72-035-0615