



P/N 110873-01 Rev. D 01/2016

# Installation Instructions for PC-DVF32TMHSTPN conversion kit Converting from Natural Gas to Propane/LP Gas For Use When Converting Models DVF32TMHST and DVF32TMH PN Series Vented Decorative Fireplaces

For more information, visit [IHP.US.com](http://IHP.US.com)

This conversion kit **MUST** be installed by a qualified service agency.

Installation and adjustment of the conversions necessary for propane/LP gas are the responsibility of the qualified installer and/or homeowner and are not covered by warranty.

Read these instructions completely before installing this conversion kit.

Before proceeding, make sure gas control valve is in the OFF position, all electrical power to the appliance is OFF, and fireplace is cool to the touch.

**CAUTION:** The gas supply shall be shut off prior to disconnecting the electrical power before proceeding with the conversion.

## Parts included with this kit:

Part No.	Description	Qty.
23104	Main Burner Orifice LP (#51)	1
108085-02	Pilot Orifice LP (30)	1
14488	Gas Valve Regulator LP	1

## Tools Required

- 10 mm Open end wrench
- 12 mm Open end wrench
- 11/16" Open end wrench or adjustable wrench
- 7/8" Open end wrench or adjustable wrench
- Thread sealant (Resistant to Propane/LP)
- Torx T20 or slotted screwdriver
- 5/16" Socket or nut driver
- #2 Short Phillips screwdriver
- High Temperature silicone sealant (GERTV 106/Locktite RTV81585)

## ACCESSING FIREPLACE

Access burner system through either side of unit.

1. Remove upper and lower louver panels by pulling 4 spring latches toward center while pulling louver assembly away from unit. Latches are located 2 at each end of louvers (see Figure 1).
2. Remove screen rod, if installed, by sliding rod to left or right until rod end is free. Remove screen assembly from fireplace.
3. Open glass door by releasing 2 pairs of latches located on top and bottom of firebox (see Figure 2). You may need a screwdriver to extend spring loaded clasp over catch on door flanges. Use caution when opening latches.

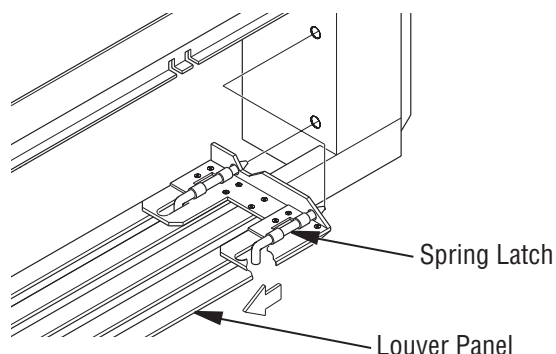


Figure 1 - Removing Louver Panel

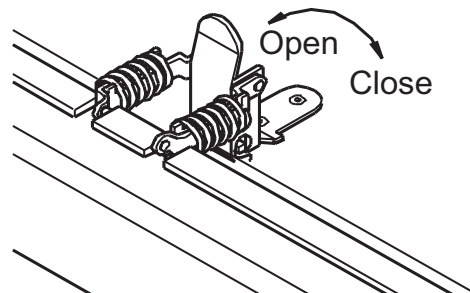
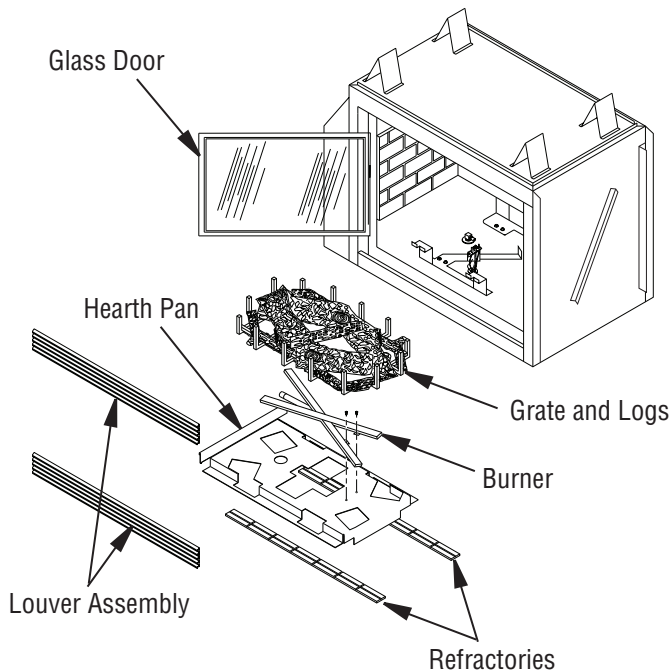


Figure 2 - Opening Door Latches

## DISASSEMBLING HEARTH AND BURNER SYSTEM

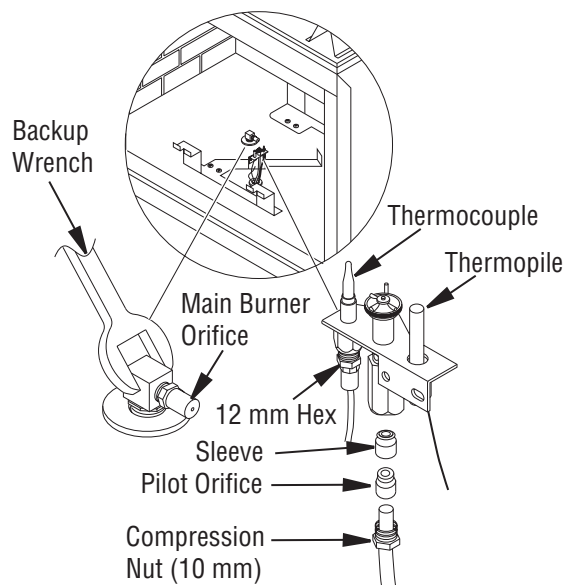
1. Do not remove logs from grate. Lift grate off stands. Place entire assembly outside of unit for ease of reassembly (See Figure 3).
2. Remove (2) 5/16" hex screws holding burner in place. Slide burner forward off of orifice mount while lifting up.
3. Remove 2 side brick panels by lifting up inner edge above hearth pan and sliding brick inward into grate stand. Lift outer edge over flange of facing. If necessary, move hearth pan to one side or the other to remove remaining brick on opposite side. Center hearth pan.
4. Lift end flange of pan off of rear brick stand and raise up and out of firebox.



**Figure 3 - Disassembly of Hearth System**

## MAIN BURNER ORIFICE CONVERSION

1. Using a 7/8" open end or adjustable back-up wrench, hold orifice mount while removing main burner orifice with an 11/16" open end wrench (see Figure 4).
2. Replace main burner orifice with orifice included with kit stamped with #51. Apply a light amount of propane/LP resistant sealant to male threads. Tighten orifice into mount using back-up wrench to maintain its centered position.



**Figure 4 - Removing/Replacing Orifices**

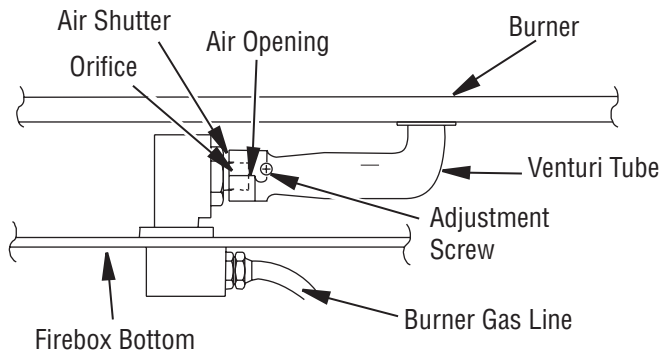
## PILOT BURNER ORIFICE CONVERSION

1. Convert pilot burner by changing orifice. Remove compression nut using a 10 mm open end wrench and a 12 mm back-up wrench (see Figure 4).
2. Remove pilot orifice from barrel. If orifice will not come out, tap lightly against barrel with handle of screwdriver.
3. Replace pilot orifice with orifice included with kit stamped with #30. Place open end of new pilot orifice over compression sleeve and carefully slide it inside pilot burner. Tighten compression nut using back-up wrench.

**IMPORTANT:** Be careful not to bend or kink aluminum tubing during conversion. Make sure compression sleeve and pilot orifice are properly mated and aligned before tightening compression nut. If there is insufficient tube length to permit easy removal or reinstallation, remove pilot by loosening retaining nuts on thermopile, thermocouple and ignitor elements. With a #2 Phillips screwdriver unscrew pilot from bracket. Make certain all components are reinserted and tightened before completing orifice conversion. If, during conversion, seal is broken where leads pass through firebox bottom you must reapply RTV silicone to seal area.

## REINSTALLING MAIN BURNER

1. Reinstall hearth pan by sliding end flange over bottom edge of refractory stand. Center hearth pan. Slide front edge down between raised hearth support.
2. Reinsert 2 side bricks in reverse order. Center view port in hearth pan over orifice mount.
3. Visually check air shutter setting on main burner. Air shutter should be fully opened for use with propane/LP gas. If not fully opened, loosen adjustment screw and turn air shutter until openings are fully exposed. Tighten adjustment screw.
4. Insert main burner venturi tube through center cutout in hearth pan. Slide air shutter mount over orifice (see Figure 5, page 3). Replace 2 mounting screws.

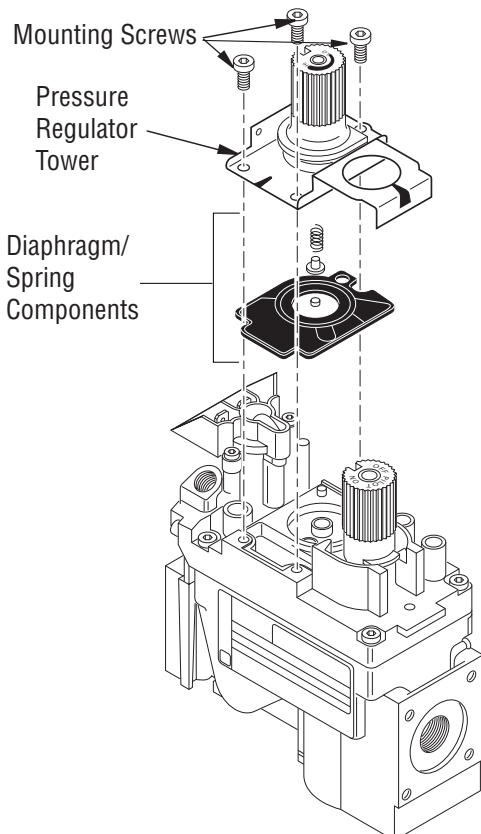


**Figure 5 - Removing/Replacing Orifices**

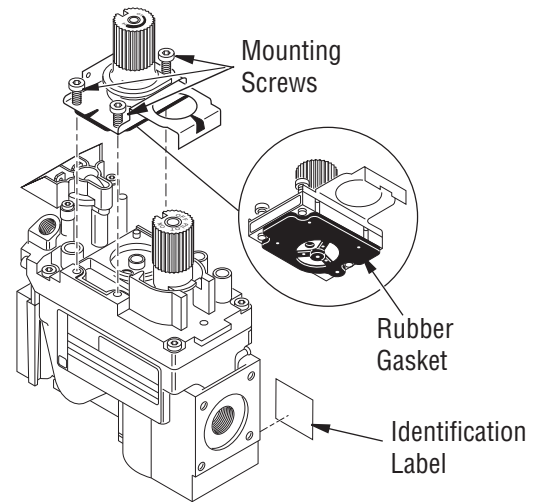
## GAS CONTROL VALVE CONVERSION

Convert gas control valve by changing valve regulator portion of gas valve.

1. Using a TORX T20 or slotted screwdriver, remove and discard 3 mounting screws, pressure regulator tower, and diaphragm/spring components (see Figure 6).
2. Insure rubber gasket is properly positioned on new pressure regulator assembly. Install new pressure regulator assembly to valve using new mounting screws supplied with kit. Tighten screws securely (approximately 25 in-lbs.) See Figure 7.
3. Install identification label enclosed with gas valve regulator to valve body where it can easily be seen (see Figure 7).



**Figure 6 - Removing Mounting Screws, Pressure Regulator Tower, and Diaphragm/Spring Components**



**Figure 7 - Installing Pressure Regulator Assembly**

## FINAL PREPARATION

1. Place grate and log assembly back into position on grate stand as shown in appliance installation manual.
2. Close glass door tightly and secure all 4 latches.
3. Replace screen rod assembly.
4. Replace top and bottom louver assemblies with louvers pointing down. Upper louver should have brass strip on bottom and bottom louver should have brass strip on top.

The conversion is now complete.

Refer to section on Gas Supply Testing and Operating Fireplace in your appliance owner's manual.

**⚠ WARNING: Test all gas piping and connections, internal and external to unit, for leaks after installing or servicing. Correct all leaks at once.**

**⚠ WARNING: Never use an open flame to check for a leak. Apply noncorrosive leak detection fluid to all joints. Bubbles forming show a leak. Correct all leaks at once.**

**⚠ WARNING: This conversion kit shall be installed by a qualified service agency in accordance with the manufacturer's instructions and all applicable codes and requirements of the authority having jurisdiction. If the information in these instructions is not followed exactly, a fire, explosion or production of carbon monoxide may result causing property damage, personal injury or loss of life. The qualified service agency is responsible for the proper installation of this kit. The installation is not proper and complete until the operation of the converted appliance is checked as specified in the manufacturer's instructions supplied with this kit.**

---

Innovative Hearth Products reserves the right to make changes at any time, without notice, in design, materials, specifications, prices and also to discontinue colors, styles and products. Consult your local distributor for fireplace code information.

Printed in U.S.A. © 2012 Innovative Hearth Products LLC

P/N 110873-01 Rev. D 01/2016

1508 Elm Hill Pike, Suite 108 • Nashville, TN 37210