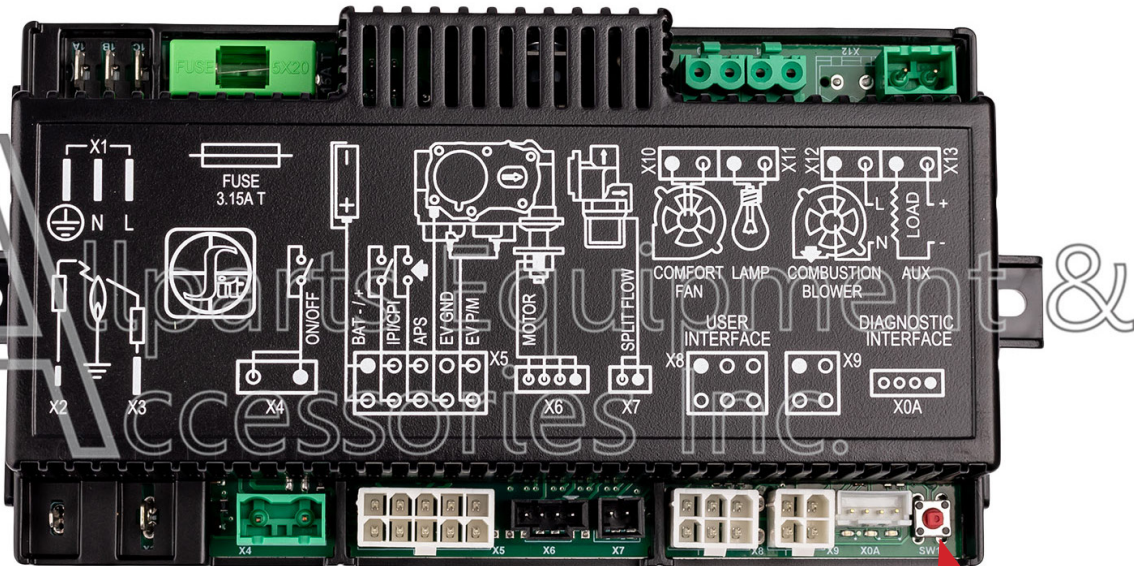


# IFC Control Board Programming To Remote Transmitter Instructions



Watch us sync an IFC board to the remote on YouTube! **@allpartsinc**



**Before use, the new IFC board must be programmed to your remote transmitter:**

- Locate the red button on your IFC board labeled **SW1**: this is the remote sync button.
- Press this button 1 time and you will hear an audible beep from the module. Now turn the remote on and you should hear additional beeps indicating that the remote is now programmed to the new IFC module.