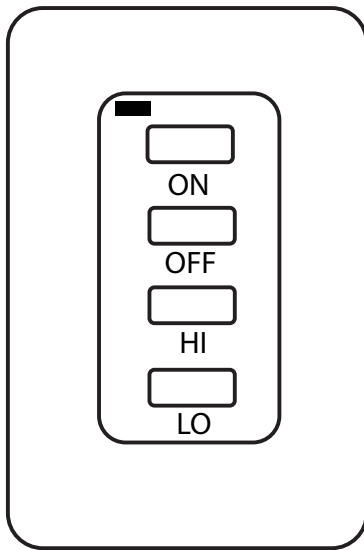


## OPERATING AND INSTALLATION INSTRUCTIONS

### INTRODUCTION

This transmitter operating range is approximately 20-feet. The transmitter operates on one of 65,536 security codes that are programmed into the transmitter at the factory; this transmitter operates on radio frequencies with non-directional signals. The receiver for this transmitter is built into the VCS-ECOMOD module.

### TRANSMITTER



The transmitter has ON/OFF and HI/LO, functions that are activated by pressing the buttons on the face of the transmitter. When a button on the transmitter is pressed, a signal light on the transmitter illuminates briefly to verify that a signal has been sent. Upon initial use, there may be a delay of three seconds before the remote receiver will respond to the transmitter. This is part of the system's design. If the signal light does not illuminate, check the position of the transmitter's battery.

Fig. 1 Transmitter

### TO INSTALL BATTERIES IN WALL MOUNT TRANSMITTER

1. Remove face from backing plate by inserting a small screwdriver into the small slot at the top or bottom of the faceplate as shown then snap OFF (See figure 2). The transmitter operates with (2) 3-volt button (CR2032) cell batteries.
2. Locate the two holders (metal tabs) for the 3V (CR2032) button cell batteries.
3. Place the button cell batteries into the battery holders under the metal tabs and snap into place. (Ensure the batteries are installed with the (+) plus side out as shown in figure 3 on page 2.)
4. After the batteries are installed replace the faceplate on the base.

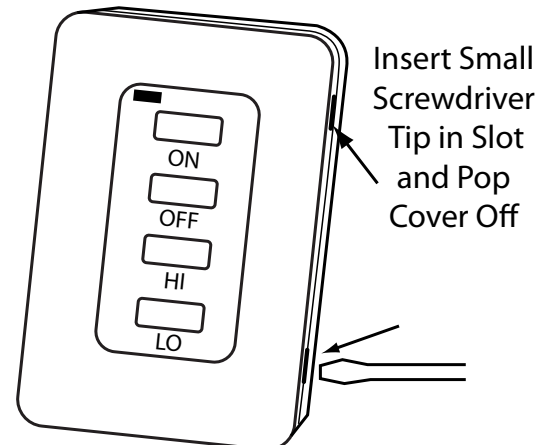


Fig. 2 Front Cover Removal

### TO REMOVE THE BATTERIES IN WALL MOUNT TRANSMITTER

1. Remove face from backing plate by inserting a small screwdriver into the small slot on the side at the top or bottom of the faceplate as shown then snap OFF (See figure 2).
2. Locate the (2) holders for the 3V (CR2032) button cell batteries.
3. Insert a small screwdriver into the slot at bottom of the button cell battery area and pop battery out.
4. After the batteries are installed replace the faceplate.

## WALL MOUNTING THE TIMER

1. The transmitter must be located within 20-feet of the control module.
2. Remove the faceplate as shown in figure 2, page 1.
3. Locate the two mounting holes and mark the wall.
4. Use the (2) two dry wall anchors and screws (supplied) to mount the base plate on the wall or mounted onto an existing plastic electrical box. See figure 3 base plate holes centered at top and bottom of transmitter.
5. Mount plate should be mounted level for best operation.

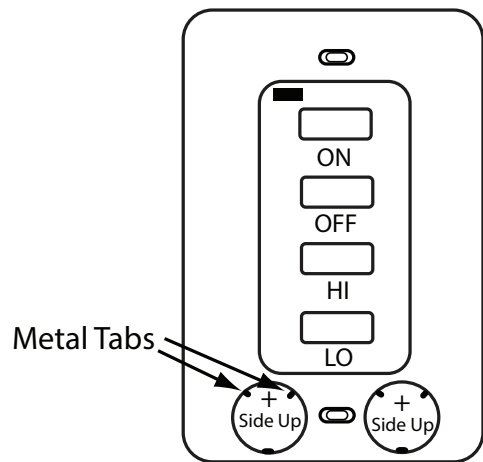


Fig. 3 Battery Installation

## LEARNING TRANSMITTER TO MODULE

### (Pairing the Remote to the Control Module)

1. To pair the remote transmitter to the control module, press the learn switch and release. There should be an audible beep indicating the module is ready to accept a transmitter code. Press any button on the transmitter within 60-seconds to send a signal. If the signal is received, the module should beep indicating the signal was received.  
**Note:** the module will remain "open" and ready to accept a signal for 60-seconds after the learn button is pressed.
2. The control module will learn up to 3 different transmitter security codes (only one may be a thermostat style).
3. Security codes will be retained in memory indefinitely if power is removed.
4. Press and hold learn switch on for 6-seconds then the release to clear all transmitter security codes retained in memory. Repeat learn process as needed.

## OPERATION

### HI/MED/LO FLAME TRANSMITTER OPERATION (Step Motor)

Press the **ON** button and the appliance will turn ON in the **HI** position:

1. Press and release the **LO** button one time and the transmitter will adjust the flame to **MED** flame height.
2. Press and release the **LO** button again and the transmitter will adjust the flame to **LO** flame height.
3. Press and release the **HI** button on the transmitter the appliance flame will go the **MED** setting.
4. Press and release the **HI** button again on the transmitter the appliance flame will go the **LO** setting.
5. Press the **OFF** button to turn the appliance **OFF**.

## BATTERY LIFE

Life expectancy of batteries in the transmitter should be at least 12 months. Check and replace transmitter batteries annually. When the transmitter no longer operates the remote receiver from 20-feet (i.e., the transmitter's range has decreased) or the remote receiver does not function the transmitter batteries should be checked. The transmitter should operate with as little as 2.4 volts battery power from each battery.

## SPECIFICATIONS

**BATTERIES:** Transmitter (2) 3-volt (CR2032) Batteries  
Operating Frequency: 303.8 MHZ

FCC ID No.'s: transmitter - K9LSP1001  
Canadian IC ID No.'s: transmitter – 2439-102-728

### HOW TO REGISTER A CLAIM AGAINST WARRANTY

In order for any claim under this warranty to be valid, you must contact the IHP dealer/distributor from which you purchased the product. If you cannot locate the dealer/distributor, then you must notify IHP in writing. IHP must be notified of the claimed defect within 90 days of the date of failure. Notices should be directed to IHP Warranty Department at 1508 Elm Hill Pike, Suite 108; Nashville, TN 37210 or visit our website at [www.IHP.us.com](http://www.IHP.us.com).