

Equalizer

210BD, 385BD, 420 IBD & 315BD

Owner's Manual

READ THIS BOOK

This book has important information for the use and safe operation of this machine. Failure to read this book prior to operating or attempting any service or maintenance procedure to your DELCO machine could result in injury to you or to other personnel; damage to the machine or to other property could occur as well. You must have training in the operation of this machine before using it. If you or your operator(s) cannot read English, have this manual explained fully before attempting to operate this machine.

Si Ud. o sus operadores no pueden leer el Inglés, se hagan explicar este manual completamente antes de tratar el manejo o servicio de esta máquina.

For new books write to: DELCO Cleaning Systems, LLC. 1111 Lake Francis Dr.

Siloam Springs, AR. 72761

Contents of this Book

Operator Safety Instructions	1
Introduction and Machine Specifications	3
Machine Operation Instructions	4
Freeze-Up Prevention	5
How to Correct Problems in the Machine	6
Schematic Drawing -115V and 230V	9
Assembly Drawing - All Models	10
Parts List	11
Parts List	12
Unloader Valve Drawing & Parts List	13
Pump Drawing - 420 IBD	14
Parts List	15
Pump Drawing - 385BD & 315BD	16
Parts List	17
Pump Drawing - 210BD	18
Parts List	19
Burner Drawing & Parts List - 420 IBD & 315 BD	20
Burner Drawing & Parts List - 210 BD & 385 BD	21
Fuel Filter Components	22

OPERATOR SAFETY INSTRUCTIONS



WARNING



AVERTISSEMENT



ADVERTENCIA



DANGER means:

Severe bodily injury or death can occur to you or other personnel if the **DANGER** statements found on your machine or in your Owner's Manual are ignored or are not adhered to. Read and observe all **DANGER** statements found in your Owner's Manual and on your machine.



WARNING means:

Injury can occur to you and to other personnel if the **WARNING** statements found on your machine or in your Owner's Manual are ignored or are not adhered to. Read and Observe all **WARNING** statements found in your Owner's Manual and on your machine.



CAUTION means:

Damage can occur to the machine or to other property if the **CAUTION** statements found on your machine or in your Owner's Manual are ignored or are not adhered to. Read and observe all **CAUTION** statements found in your Owner's Manual and on your machine.



DANGER:

Failure to read the Owner's Manual prior to using this machine could result in injury to you or to other personnel; damage to the machine or to other property could occur as well. You must have training in the operation of this machine before using it. If you or your operator(s) cannot read English, have this manual explained fully before attempting to operate this pressure washer.



DANGER:

Machines can cause an explosion when operated near flammable materials and vapors. Do not use this machine with or near fuels, grain dust, solvents, thinners, or other flammable materials.



DANGER:

This machine emits carbon monoxide. Asphyxiation could occur if the unit is used in an area with poor or inadequate ventilation. Operate unit in a well-ventilated area. Do not connect the exhaust stack directly to a flue pipe. This may cause sooting of the combustion chamber. If you must vent to the outside use a hood type vent or an exhaust fan. Install flue pipes in accordance with all local codes.



DANGER:

Operating a machine that is not completely or fully assembled could result in injury or property damage. Do not operate this machine until it is completely assembled. Inspect hoses, fittings, and heat exchanger for leaks or fatigue before each use.



DANGER:

Filling a machine with fuel in an explosive or poorly-ventilated area can cause an explosion. Only fill the fuel tank in an open area. Do not fill the tank near open flames or while the unit is running. Do not smoke while filling the tank. Do not over-fill the tank. Wipe up any spills. Tighten the cap on the tank when finished. Use kerosene, or #1 or #2 diesel as a fuel only. **Do not use K-1 kerosene.**



DANGER:

Tampering with the machine's factory preset unloader valve setting and/or the pressure relief valve setting could result in a machine explosion. Do not attempt to change the settings. Discontinue use if a malfunction occurs and contact your local authorized Delco distributor.



DANGER:

Operating a pressure washer with a malfunctioning burner or burner controls could result in a machine explosion. Inspect burner and burner control operation before each use. If you suspect a problem with the burner, discontinue use immediately and contact your local authorized Delco distributor for assistance.



DANGER:

Failure to properly maintain the heat exchange coil can result in a steam explosion. Scale or lime build-up will act as an insulation and decrease the efficiency of the heat exchanger coil and will also cause hot spots. This can result in a weakening of the tubing which in turn may cause a rupture. **Reference the Operator Safety Manual, part no. 78336A for more information on maintenance of the heat exchange coil.**

**DANGER:**

Operating a machine with a ground fault circuit interrupter (GFCI) that has been tampered with, or one that repeatedly trips, could result in an electrocution. Do not remove, disable, or tamper with the GFCI. If the ground fault circuit interrupter repeatedly trips, discontinue use of the machine. Contact your local authorized Delco distributor for assistance with the GFCI.

**DANGER:**

Electrocution could occur if the machine is used on a power circuit that repeatedly trips or is undersized. Have a licensed electrician check the fuse, circuit breaker or power supply, and/or contact your local authorized Delco distributor for assistance.

**DANGER:**

Electrocution could occur if maintenance and repairs are performed on a unit that is not properly disconnected from the power source. Disconnect the power supply before attempting any maintenance or service.

**DANGER:**

Use of this machine with a damaged power cord could result in an electrical shock. Do not use the machine if the power cord is damaged. Do not use the electrical cord to move the machine.

**WARNING:**

Water under high pressure can cause severe injury. Keep all persons away from the machine and the spray area. Always point the wand toward the object being cleaned.

**WARNING:**

Injury to the operator or bystanders could occur if the machine is operated without all of the guards being in place on the unit. When operating the machine, all guards must be in place.

**WARNING:**

Operating a pressure washer under high pressure without a securely fastened hose, gun and spray nozzle(s) could result in bodily injury or property damage. Make sure the spray nozzle, gun and hose are securely fastened before operating the machine. Do not remove the nozzle or disconnect the high pressure hose while the system is pressurized and/or running.

**WARNING:**

Machines have moving parts and hot areas that can cause injury. Keep hands, feet, and loose clothing away from the pressure washer while it is running. After use, allow an adequate amount of cool-down time before attempting to perform any maintenance or service to this unit.

**WARNING:**

Failure to wear safety goggles and protective clothing when operating a pressure washer reduces operator safety. Always wear safety goggles and protective clothing when the machine is running or when operating machine.

**WARNING:**

Operating this pressure washer without the appropriate decals could result in operator injury or damage. Make sure all labels and instructional information are fastened to the machine. Get new labels and decals from your Delco distributor.

**CAUTION:**

Maintenance and repairs performed by unauthorized personnel could result in damage or injury. Servicing of this unit must always be referred to an authorized Delco distributor.

**CAUTION:**

Electrical damage can occur if the machine is exposed to direct and/or over spray. Always point the wand toward the object being cleaned.

**CAUTION:**

Using an extension cord with your pressure washer will result in a voltage drop and loss of power. Use of an extension cord is not recommended.

**CAUTION:**

Use of this machine to move other objects or to climb on could result in injury or damage.

**CAUTION:**

Operating a pressure washer when the pump is low on oil could cause pump damage. Always check your oil before using the machine. Use SAE 30 weight oil.

**CAUTION:**

Operating a pressure washer with insufficient water flow can damage the pump. Water should be turned on full-force to avoid insufficient water flow.

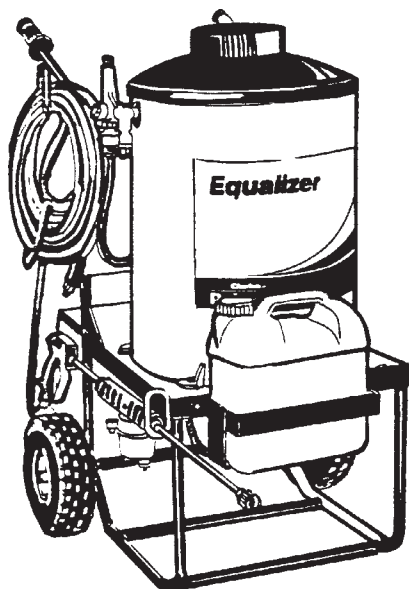
**CAUTION:**

Pump damage could occur if the pressure washer is ran for more than five (5) minutes with the trigger released (closed).

**CAUTION:**

Your machine warranty will be voided if anything other than genuine Delco parts are used on your pressure washer. Always use Delco parts for replacement.

INTRODUCTION AND MACHINE SPECIFICATIONS



The **Equalizers** maximize cleaning equipment power into a lightweight portable pressure washer. As standard equipment, the **Equalizers** are equipped with ceramic plunger pumps producing from 2.0 gpm @ 1000 psi up to 4.0 gpm @ 2000 psi. Carbon steel deterioration will no longer contaminate fuel tanks and water reservoirs as the **Equalizers** are equipped with a stainless steel fuel/float tank unit. In addition, a Delco fuel/water separator filter to prevent premature fuel pump failure is standard on all models. The ground fault circuit interrupter (GFCI) is built in as a safety enhancement, also a low-water shut-off switch and high limit temperature switch are all standard equipment on all electric portable **Equalizers**. Stainless steel coil wraps are standard equipment on select models.

Model	210 BD 09107A	385 BD 09108A	420IBD & 420IBD (SS) 09109A & 09168A	315 BD 09111A	385 BD 09114A
Flow GPM	2 ¹	3 ¹	4 ¹	3.6 ¹	3 ¹
Pressure (psi)	1000 ¹	1000 ¹	2000 ¹	1200 ¹	1000 ¹
Volts	115	115	230/1	230/1	115
Amps	16	19	26	17	19
Min. Circuit Amp.	20	30	30	20	30
Fuel	Kerosene #1 or #2 Diesel	Kerosene #1 or #2 Diesel	Kerosene #1 or #2 Diesel	Kerosene #1 or #2 Diesel	Kerosene #1 or #2 Diesel
BTUH Input	189000	245,000	350,000	315,000	245,000
Temperature Rise (°F)	140° F ¹	140° F ¹	140° F ¹	140° F ¹	140° F ¹
Motor	1 1/2 hp	2 hp	5 hp	3 hp	2 hp
Pump	Ceramic plunger	Ceramic plunger	Ceramic plunger	Ceramic plunger	Ceramic plunger
Metering Valve	1/4 adjustable	1/4 adjustable	1/4 adjustable	1/4 adjustable	1/4 adjustable
Heat Exchanger	7/8" O.D. tubing	7/8" O.D. tubing	7/8" O.D. tubing	7/8" O.D. tubing	7/8" O.D. tubing
Coil	Schedule 80 tubing	Schedule 80 tubing	Schedule 80 tubing	Schedule 80 tubing	Schedule 80 tubing
Power Cord	35' GFCI	35' GFCI	35' GFCI	35' GFCI	35' GFCI
Spray Control	Open gun	Open gun	Trigger gun	Trigger gun	Trigger gun
Hose	3/8 x 50' wire braided	3/8 x 50' wire braided	3/8 x 50' wire braided	3/8 x 50' wire braided	3/8 x 50' wire braided
Wheels	10 1/2" pneumatic	10 1/2" pneumatic	10 1/2" pneumatic	10 1/2" pneumatic	10 1/2" pneumatic
Dimensions (in.)	28 1/2 x 32 x 42 1/2	28 1/2 x 33 x 42 1/2	28 1/2 x 38 x 44	28 1/2 x 33 x 42 1/2	28 1/2 x 33 x 42 1/2
Weight (lbs)	400	430	500	430	430

¹ Actual values may vary 5%

OPERATING INSTRUCTIONS

Following delivery of your Delco pressure washer, inspect the unit for shipping damage and follow these directions:

1. Locate the unit in a convenient location. Your Delco pressure washer has an overall cleaning range of 80'. Securely fasten the pressure hose connection.
2. Observe all danger, warning, and caution statements.
3. Connect the power cord to an appropriately sized three wire grounded circuit. The circuit chosen should have no other loads present and should be of the shortest possible length to the main circuit panel. Test and reset the GFCI.
4. Connect the water supply and turn it fully on, checking all hose connections for leaks. **Note: Apply pipe sealant or tape at all connections.**
5. Connect the high pressure hose to the gun.
6. Connect the extension wand to the gun.
7. Fill fuel tank with kerosene, or #1 or #2 diesel.
8. If your unit is a trigger control, squeeze the trigger. Turn the control switch to position one (cold water wash). Allow air to purge from the system. Check the system for leaks.
9. Point the wand toward the floor. Flush out the system.
10. Turn machine to the "OFF" position.
11. Install nozzle onto the wand.
12. Turn the control switch to position one to establish water flow. Turn control switch to position two (hot water wash). The burner should automatically come on.



WARNING: If water should stop flowing from the gun, turn unit off immediately and contact an authorized Delco service person.

NOTE: On initial start up, or if the unit runs out of fuel during use, there will be a slight hesitation as the fuel system purges air. Only under these circumstances should there be any hesitation present.

After the burner lights there should be no visibly apparent smoke. If your unit is a trigger control, release the trigger. The unloader should activate and the flame should cease on the burner automatically.

13. Point the wand toward the object to be cleaned and proceed.
14. For chemically enhanced cleaning, place the chemical feed line in liquid detergent. Open the metering valve. Dial metering valve to desired chemical concentration. Close metering valve for rinsing.



DANGER: The detergent level should never fall below the chemical line. If you should discover this condition, immediately turn the metering valve off. Air introduced into the system will cause pump damage and create steam space if the burner is on which may lead to a steam explosion.

15. Following the hot water wash, turn the control switch to position one. Allow the unit to run and adequately cool down the heat exchanger. This period of time may be spent on a cold water rinse.
16. Turn the control switch to position zero (off). Disconnect the power cord. Turn the water supply off and disconnect. Disconnect the pressure hose, then drain.

FREEZE-UP PREVENTION

To prevent freeze-up follow these instructions:

1. Drain the float tank.
2. Remove the spray nozzle from the wand.
3. Mix antifreeze concentrate and water in a large container. Read the recommended mixing instructions given with the antifreeze.
4. Fill the float tank with the antifreeze mixture.
5. Put the end of the chemical line in the float tank. Fully open the metering valve.
6. Turn the control switch to position one.
7. Let the pump run until the antifreeze moves through the pump, coils, and pressure hose.

NOTE: The trigger on the gun must be pulled to allow antifreeze to pass through the coils, and then the trigger must be released to allow the antifreeze to pass through the bypass line.

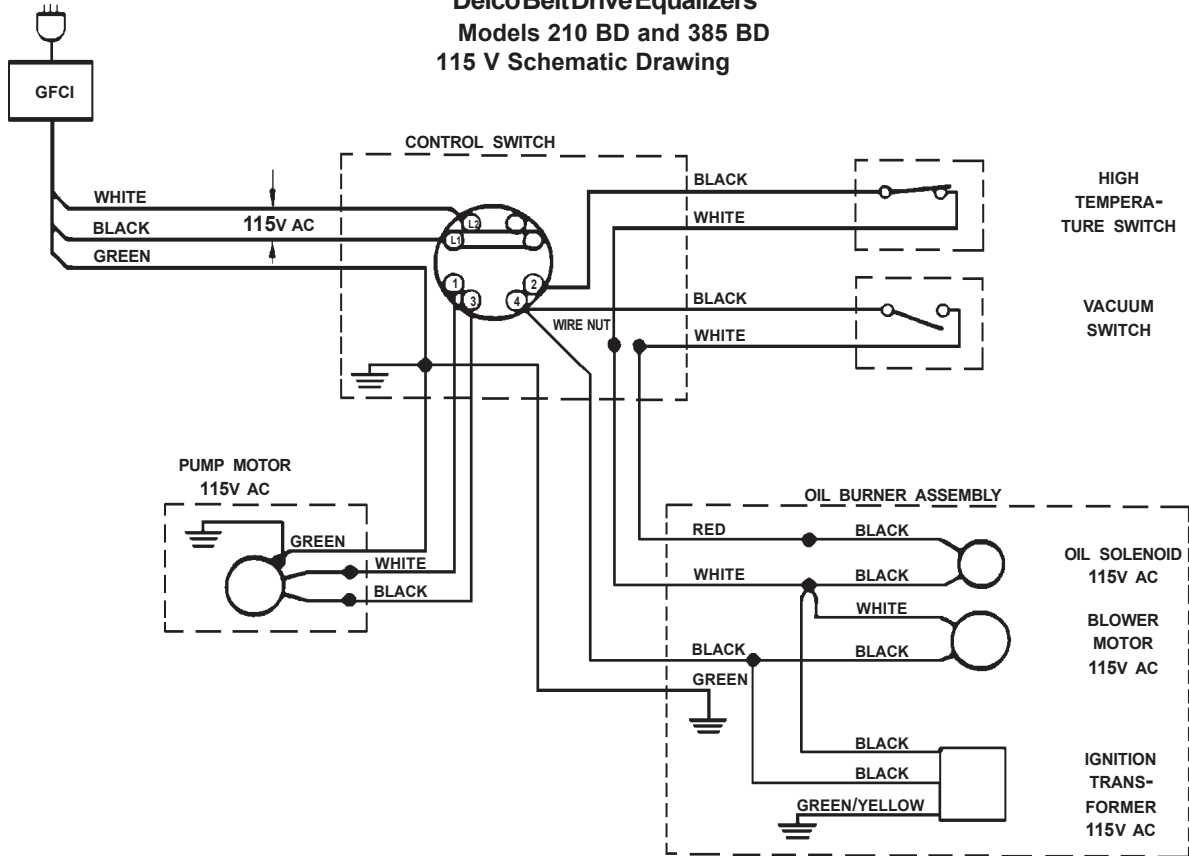
8. Turn the control switch to the "O" position and close the metering valve.
9. Unplug the cord and put the machine in a dry building.

HOW TO CORRECT PROBLEMS IN THE MACHINE

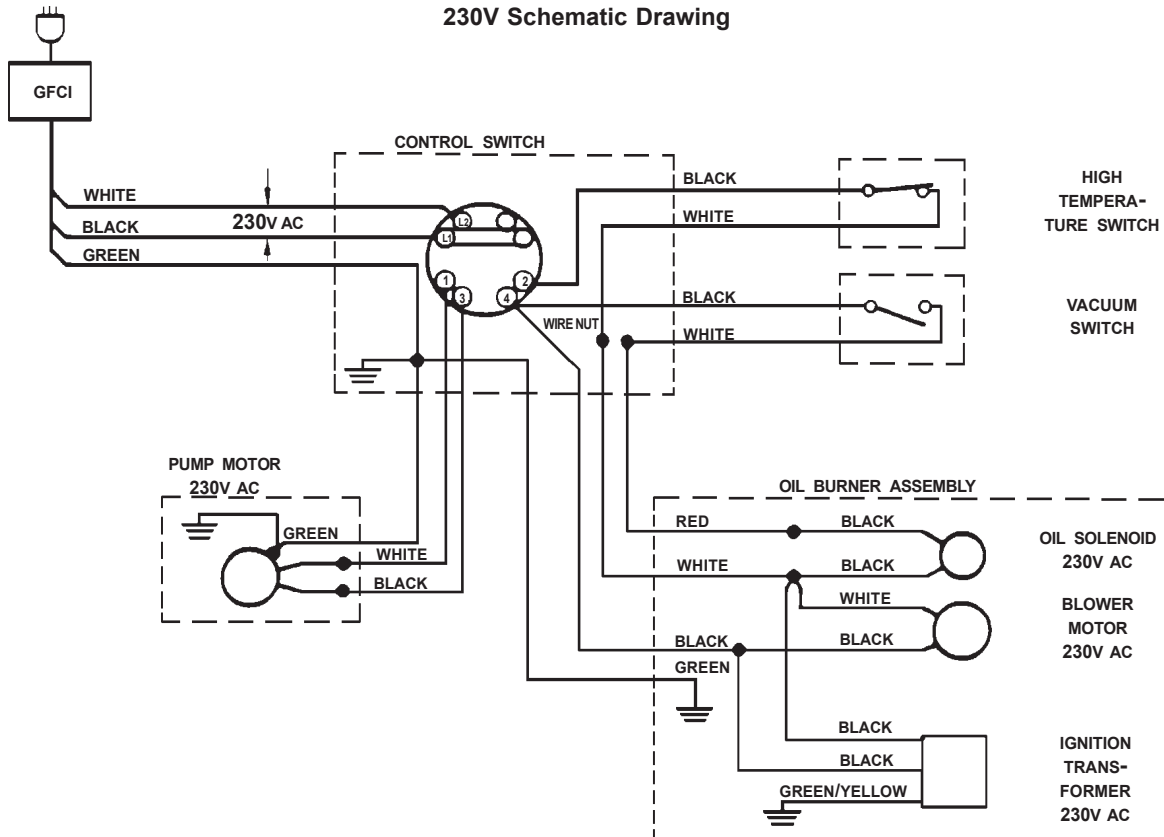
Problem	Cause	Action
The motor will not start	Power cord may not be connected.	Connect the power cord.
	Switch may not be turned "ON".	Turn switch to "ON".
	Ground fault circuit interrupter did not reset.	Reset the ground fault circuit interrupter.
	The power cord may be connected to a dead outlet.	Contact a licensed electrician.
	May have a defective motor, GFCI, or switch.	Contact your authorized Delco dealer.
	The thermal overload switch tripped.	Allow motor to cool, reset thermal switch.
The motor has difficulty starting or is overheating.	Circuit may be too long, overloaded, or conductors may be undersized.	Locate the outlet nearest to the circuit panel which can be reached with the cord supplied with the machine.
	Incorrect voltage or frequency.	Check the voltage and frequency.
	The motor is wet.	Contact an authorized Delco service person.
	The coils are limed.	Delime the coils.
	The nozzle is dirty.	Remove and clean the nozzle.
The pump overheats.	The oil level is low.	Fill to the proper oil level with high quality SAE 30-weight non-detergent oil.
	The machine has been running for an extended period of time with the trigger gun off.	Immediately press the gun release lever to allow cool water to flow into the pump.
The pump vibrates.	The pump is sucking air.	Contact an authorized Delco service person.
	The pump check valves are dirty.	Contact an authorized Delco service person.
The pump surges when the trigger gun is off.	There is a leak.	Check all fittings. Keep fasteners tight. Contact an authorized service person.
	The unloader valve is not adjusted correctly.	Contact an authorized Delco service person.
The pump is running but the pressure is low on installation.	The pump is sucking air.	Make sure the water supply is correct. Metering valve closed, or solution above above feed line.
	The pump valves are sticking.	Contact an authorized Delco service person.
	The unloader valve is worn.	Contact an authorized Delco service person.
	The nozzle is not the correct size.	Replace the nozzle.
	The pump plunger packing is worn.	Contact an authorized Delco service person.
The pressure is changing.	The pump valves are worn.	Contact an authorized Delco service person.
	The pump valves are dirty.	Contact an authorized service person.
	The pump is sucking air.	Check the water supply. Make sure all connections are tight.
	The pump plunger packing is worn.	Contact an authorized Delco service person.
The pressure is low after normal use.	The nozzle is worn.	Replace the nozzle.
	The pump check valves are worn or dirty.	Contact an authorized Delco service person.
	The unloader valve is worn.	Contact an authorized Delco service person.
	The pump plunger packing is worn.	Contact an authorized Delco service person.

Problem	Cause	Action
The pump is noisy.	There is air in the suction line.	Check the water supply. Make sure all fittings are tight.
	The valves are dirty.	Contact an authorized Delco service person.
	The bearings are worn.	Contact an authorized Delco service person.
	The incoming liquid is too hot.	Reduce the temperature to below 140°
	The pump check valve springs are worn.	Contact an authorized Delco service person.
There is/has been water in the oil.	The oil seal is worn.	Contact an authorized Delco service person.
	The humidity is high.	Contact an authorized Delco service person.
	The plunger packing is worn.	Contact an authorized Delco service person.
There is water dripping from under the pump.	The plunger packing is worn.	Contact an authorized Delco service person.
	The plunger retainer o-ring is worn.	Contact an authorized Delco service person.
Oil is dripping.	The oil seal is worn.	Contact an authorized Delco service person.
The pressure is too high and is released at the unloader or pressure relief valve	The coils are limed.	Delime the coils.
	The spray nozzle is obstructed.	Clean the nozzle.
The machine does not pick up the cleaning solution.	The solution control valve is leaking.	Tighten all fittings on the valve.
	The screen on the chemical line is dirty.	Clean the screen. Replace if damaged.
The gun and the hose are vibrating.	The nozzle is obstructed.	Clean the nozzle.
	The nozzle is not the correct size.	Install a new nozzle. Use only a nozzle recommended for the machine.
	There is an air leak around the solution control valve.	Tighten all fittings on the valve.
	There is not enough water.	Check the water level in the tank.
	The check valve in the pump is damaged.	Contact an authorized Delco service person.
The unloader or pressure relief valve is leaking.	The valve is not correctly adjusted.	Contact an authorized Delco service person.
	The seat is worn or damaged.	Contact an authorized Delco service person.
	The nozzle is dirty.	Clean the nozzle.
	There is a restriction in the discharge hose.	Remove the nozzle and flush the line.
	There is a restriction in the coil.	Clean the coil.
The burner will not start.	The fuel tank is empty.	Fill the fuel tank with either #1 or #2 diesel, or kerosene.
	The fuel filter is stopped-up or dirty.	Change the fuel filter.
	The burner motor does not run.	Push the reset button on the burner motor. If the burner still does not start, contact an authorized service person.
	The burner is not turned on.	Turn the switch to the "ON" position (II).

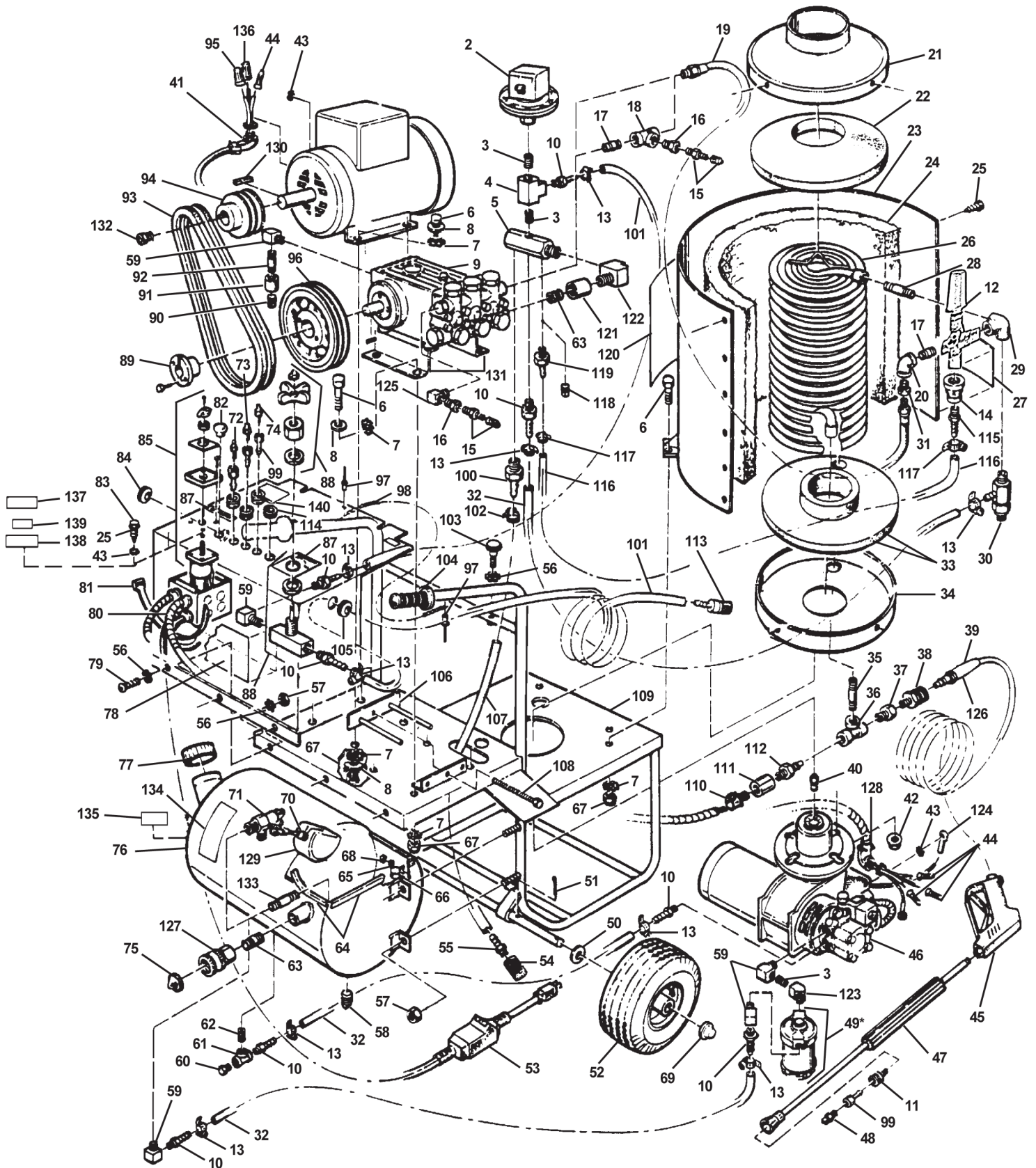
DelcoBeltDriveEqualizers
Models 210 BD and 385 BD
115 V Schematic Drawing



DelcoBeltDriveEqualizers
Models 420 IBD and 315 BD
230V Schematic Drawing



DelcoBeltDriveEqualizer-AllModels
Machine Assembly Drawing



*See page 22 for fuel filter components.

Delco Belt Drive Equalizers - All Models

Machine Assembly Parts List

Ref.	Part No.	Qty.	Description	210	385	420 I	315	385 (TC)	420 I (SS)
1	195775	1	Motor - 1.5 hp	x					
	44803A	1	Motor - 2 hp		x		x		
	195803	1	Motor - 5 hp			x		x	
	195777	1	Motor - 3 hp				x		
2	198433	1	Switch-Vacuum	x	x	x	x	x	x
3	170086	3	Nipple 1/4" Close	x	x	x	x	x	x
4	170066	1	Tee 1/4" NPT Brass	x	x	x	x	x	x
5	195690	1	Manifold Inlet	x	x	x	x	x	x
6	85813A	16	Screws 5/16-18 x 1 hex	x	x	x	x	x	x
7	980664	20	Washer - Shakeproof #1114		x	x	x	x	
	980664	4	Washer-Shakeproof #1114						x
	980664	24	Washer-Shakerproof #1114	x					
8	170860	12	Washer - flat 5/16"	x	x	x	x	x	x
9	197305	1	Pump W99		x		x	x	
	197271	1	Pump W72	x					
	197284	1	Pump W101			x			x
10	720271	8	Adapter 1/4" x 1/4" MPT	x	x	x	x	x	x
11	192277	1	Quick Coupler 1/4" FEM	x	x	x	x	x	x
12	199126	1	Valve unloader			x			x
	P3KHP	1	PULSAR3KHP Unloader				x	x	
13	722021	9	Clamp - Hose	x	x	x	x	x	x
14	170228	1	Reducer Pipe 3/4" x 1/2"			x	x	x	x
15	199027	1	Valve - Air 1/8" NPT	x	x	x	x	x	x
16	170004	1	Bushing - brass 1/4 x 1/8	x	x	x	x	x	x
17	170211	1	Nipple - Close 3/8 Galv.(pump)	x	x		x		
	170211	1	Nipple- 3/8" x Close (unloader)			x			x
18	170253	1	Tee 3/8" Galv.	x	x		x		
19	194348	1	Hose Hydraulic 1/2" x 34"			x			x
	194387	1	Hose Hydraulic 3/8" x 26"	x	x		x	x	
20	170246	1	Elbow Reducing 1/2 x 3/8			x			x
	170242	1	Elbow Reducing 3/8" Galv				x	x	
21	62807A	1	Exhaust Head Assembly	x	x	x	x		
	64322A	1	Exhaust Head Assembly						x
22	32511A	1	2" Dura Blanket Disc	x	x	x	x	x	x
23	68717A	1	Wrapper Weldment	x	x	x	x	x	x
24	194809	1	1" Dura Blanket 24 x 57"	x	x	x	x	x	x
25	170906	14	Screw #10 x 1/2"	x	x	x	x	x	x
26	61626A	1	Coil		x	x	x	x	x
	61625A	1	Coil	x					
27	77032A	1	Label - Steam Warning	x	x	x	x	x	x
28	170217	1	Nipple 1/2" x 3"	x	x	x	x	x	x
29	170248	1	Elbow Side Outlet 1/2"	x	x	x	x	x	x
30	59733A	1	Relief Valve 2K	x	x		x		
	59734A	1	Relief Valve			x			x
31	170001	1	Bushing 1/2 x 3/8 Brass	x	x				
32	170964	17"	Hose-Fuel - Tank to Burner	x	x	x	x	x	x
	170964	14"	Hose-Fuel - Tank to Filter	x	x	x	x	x	x
	170964	31"	Hose-Fuel - Relief valve/manifld.			x	x	x	x
	170964	26"	Hose-Fuel-Relief valve/manifold	x	x				
33	54725A	1	Insulator, Pyrolite, Disc	x	x	x	x	x	x
34	60764A	1	Burner Head Weldment	x	x	x	x		
35	170220	1	Nipple 1/2" x 1 1/2	x	x	x	x	x	x
36	171082	1	Tee 1/2" Sch 80	x	x	x	x	x	x
37	170775	1	Bushing 1/2: x 3/8: hydraulic	x	x	x	x	x	x
38	192276	1	Quick Coupler 3/8" MPT	x	x	x	x	x	x
39	194352	1	Hose 3/8" x R2 x 50'		x				x
	194350	1	Hose 3/8" x R1 x 50'	x	x		x	x	
40	196392	1	Nozzle Fuel 1.25 x 80° A	x					
	196382	1	Nozzle Fuel 2.25 x 80° A				x		
	196383	1	Nozzle Fuel 2.50 x 80° A				x		x
	29634A	1	Nozzle Fuel 1.75 x 90° A		x				x
41	170641	1	Strain Relief 3/8 x 90°	x	x		x		
	170647	1	Connector - Conduit 3/4"			x	x	x	
42	171101	4	Nut - Whizlock	x	x	x	x	x	x
43	980603	4	Starwasher #1110	x	x	x	x	x	x
44	911177	3	Nut - Wire	x	x				
	911177	4	Nut - Wire				x	x	x
	911177	6	Nut - Wire					x	
Ref.	Part No.	Qty.	Description	210	385	420 I	315	385 (TC)	420 I (SS)
45	194186	1	Triggerless Gun	x	x				
	54223A	1	Trigger Gun Assembly			x	x	x	x
46	50697A	1	Burner	x	x				
	50696A	1	Burner					x	
	50501A	1	Burner			x	x		x
47	53508A	1	Extension 1/4" x 34" Handle	x	x	x	x	x	x
48	196153	1	Nozzle SS 4.0 x 25° x 1/4"	x					
	196158	1	Nozzle SS 1/4" 6.0 x 25°		x		x	x	
	196156	1	Nozzle SS 1/4" 5.5 x 25°			x			x
49*	53972A	1	Fuel Filter	x	x	x	x	x	x
50	980644	2	Washer - flat 5/8" SAE	x	x	x	x	x	x
51	925053	2	Pin 1/8" x 1" Cotter	x	x	x	x	x	x
52**	59958A	2	Wheel	x	x	x	x	x	x
53	43102A	1	GFCI	x	x			x	
	43104A	1	GFCI			x			x
	43103A	1	GFCI				x		
54	198072	1	Screen - Tank 1/2"	x	x	x	x	x	x
55	170027	1	Hosebarb 5/8 x 1/2	x	x	x	x	x	x
56	980614	8	Lockwasher 1/4"	x	x	x	x	x	x
57	920349	7	Locknut 1/4"	x	x	x	x	x	x
58	170014	1	Plug - Pipe 1/2" Brass	x	x	x	x	x	x
59	170040	5	Elbow - Street 1/4 x 90	x	x	x	x	x	x
60	170486	1	Plug 1/4" black	x	x	x	x	x	x
61	170252	1	Tee 1/4" galv.	x	x	x	x	x	x
62	170206	1	Nipple 1/4" x Close galv.	x	x	x	x	x	x
63	170106	1	Nipple - Pipe 1/2"			x	x	x	x
	170219	1	Nipple - 1/2" x 2 1/2"	x					
64	193951	21 1/4"	Trim, black vinyl	x	x	x	x	x	x
65	170892	1	Lockwasher 1/4" S.S.	x	x	x	x	x	x
66	170635	1	Clamp - Conduit	x	x	x	x	x	x
67	920110	16	Nut 5/16 - 18 Elastic Stop	x	x	x	x	x	x
68	170859	1	Nut - Hex 1/4 SS	x	x	x	x	x	x
69	50429A	2	Palnut	x	x	x	x	x	x
70	29575A	1	Nut, Retainer	x	x	x	x	x	x
71	199067	1	Valve - Float Asm.	x	x	x	x	x	x
72	196308	1	Nozzle 1/4" 6.0 x 40°			x		x	
	196134	1	Nozzle 1/4" 5.5 x 0°			x			x
	196154	1	Nozzle 1/4" 4.0 x 40°	x					
73	196311	1	Nozzle 1/4" x 6.0 x 15°		x		x	x	
	56273A	1	Nozzle 1/4" 4.0 x 15°	x					
	56248A	1	Nozzle 1/4" 5.5 x 15°			x			x
74	196307	1	Nozzle 1/4" 6.0 x 0°		x		x	x	
	196152	1	Nozzle 1/4" 4.0 x 0°	x					
	196133	1	Nozzle 1/4" 5.5 x 40°			x			x
75	198078	1	Screen - Washer	x	x	x	x	x	x
76	68343A	1	Tank - fuel/float	x	x	x	x	x	x
77	192015	1	Cap - Fuel Chrome	x	x	x	x	x	x
78	72115A	1	Label, I.D.	x					
	72116A	1	Label, I.D.		x			x	
	72117A	1	Label, I.D.			x			x
	72136A	1	Label, I.D.				x		
79	85806A	3	Screw 1/4-20 x 1" Hex	x	x	x	x	x	x
80	64307A	1	Harness	x	x				
	64308A	1	Harness			x			x
	64313A	1	Harness				x		
	64318A	1	Harness					x	
81	699202	8	Wire - Tie	x	x	x	x	x	x
82	52041A	1	Button - Plug 1/2" Brass	x	x	x	x	x	x
83	66352A	1	Control Panel Weldment	x	x			x	
	66353A	1	Control Panel Weldment			x	x		
	69307A	1	Control Panel Weldment						x
84	193943	1	Grommet Rubber 3/4" x 1 3/8	x	x	x	x	x	x
85	198450	1	Switch	x	x		x		
	47360A	1	Switch			x			x
86									
87	77031A	1	Label - Instructions	x	x	x	x	x	x
88	199081	1	Valve Metering	x	x	x	x	x	x
89	191773	1	Bushing - Pulley	x	x	x		x	x

** 59306A Tube, Inner (Part list continued on next page.)
 *See page 22-fuel filter illustration

Delco Belt Drive Equalizers
Machine Assembly Parts List

Ref.	Part No.	Qty.	Description	210	385	420 I	315	385(TC)	420 I(SS)	Ref.	Part No.	Qty.	Description	210	385	420 I	315	385(TC)	420 I(SS)
90	191784	1	Bushing - Pulley				x			110	170636	1	Connector - Conduit 3/8"	x	x	x	x	x	x
91	170012	1	Plug	x	x	x	x	x	x	111	170956	1	Coupling 1/2" PVC	x	x	x	x	x	x
92	170266	1	Coupling 1/4"	x	x	x	x	x	x	112	198491	1	Switch - High Temp	x	x	x	x	x	x
93	170281	1	Nipple 1/4" x 3"	x	x	x	x	x	x	113	29576A	1	Hose Screen Assy.	x	x	x	x	x	x
	191662	1	Belt V A27	x	x			x		114	193947	4	Grommet	x	x	x	x	x	x
94	191631	2	Belt V		x			x		115	170037	1	Hosebarb 3/8 x 1/2		x	x	x	x	
	51015A	2	Belt V AX33				x			116	170991	27"	Hose 3/8" -Manifold to Unloader		x	x	x	x	
	29536A	1	Pulley AK51H	x						117	722030	2	Clamp - Hose		x	x	x	x	
	57240A	1	Pulley AK34 x 5/8		x			x		118	170013	1	Plug 3/8 Brass	x	x				
	57241A	1	Pulley 2BG -36 x 1-1/8			x			x	119	170028	1	Hosebarb 3/8 x 3/8 NPT			x	x	x	x
95	197135	1	Pulley 2AK54H				x			120	73393A	1	Label Equalizer	x	x	x	x	x	x
96	170667	1	Nut - Wire	x	x	x	x	x	x	121	170954	1	Coupling 1/2"	x	x	x	x	x	x
	29535A	1	Pulley AK51H	x						122	170044	1	Elbow St. 1/2"	x	x	x	x	x	x
	57246A	1	Pulley AK49H		x			x		123	722824	1	Elbow St. 45°	x	x	x	x	x	x
	57242A	1	Pulley 2BG65D			x			x	124	170687	1	Terminal		x	x	x	x	
97	197195	1	Pulley 160-2 x 24mm				x			125	170039	1	Elbow 3/8 x 90°			x			
98	930093	2	Rivet 1/8" x 1/4 -20	x	x	x	x	x	x	126	197056	1	Quick Coupler 3/8 Male	x	x	x	x	x	x
	192102	12"	Chain	x	x		x			127	170071	1	Fitting 3/4 x 1/2 NPT	x	x	x	x	x	x
	192102	14"	Chain				x	x	x	128	170641	1	Strain, Relief 3/8" x 90°	x	x	x	x	x	x
99	197051	4	Coupler - Quick 1/4"	x	x	x	x	x	x	129	191519	1	Float - Ball	x	x	x	x	x	x
100	194407	1	Hosebarb 5/8 x 3/8 x.228 Orifice	x						130	80501A	1	Key	x	x	x	x	x	x
	194404	1	Hosebarb 3/8" x 5/8" w/ 21/64 Or.			x		x		131	29635A	2	Rails	x					
	194401	1	Hosebarb 5/8 x 3/8 x 9/32 Orifice		x			x			197509	2	Rails		x	x	x	x	x
	194403	1	Hosebarb 3/8" x 5/8" w/ 5/16 Or.				x			132	191784	1	Bushing -H 1 1/8"			x			
	170974	19"	Tubing PVC 1/4" (Metering valve P.)	x	x	x	x	x	x	133	170216	1	Nipple 1/2" Close	x	x	x	x	x	x
101	170974	8'	Tubing PVC 1/2" (Strainer)	x	x	x	x	x	x	134	77030A	1	Label- Operating	x	x	x	x	x	x
102	192116	1	Clamp - Hose #10	x	x	x	x	x	x	135	77028A	1	Label- Diesel	x	x	x	x	x	x
103	55520A	2	Knob, Clamping	x	x	x	x	x	x	136	45400A	1	Wire-Nut- Red	x	x	x	x	x	x
104	194208	2	Grip - Handle	x	x	x	x	x	x	137	77024A	1	Label-Warning-Electirc	x	x	x	x	x	x
105	193944	1	Grommet Rubber	x	x	x	x	x	x	138	77027A	1	Label-Warning-Bilingual	x	x	x	x	x	x
106	68720A	1	Belt Tensioner Guide	x	x	x	x	x		139	72103A	1	Label - 230V			x	x		x
	64004A	1	Belt Tensioner Guide						x	140	77033A	1	Label - Warning-Bilingual	x	x	x	x	x	x
107	170966	22"	Hose - braided 5/8"	x	x	x	x	x	x	141	77039B	1	Label - Made in the USA	x	x	x	x	x	x
108	67125A	1	Rod, Adjustment	x	x	x	x	x	x										
109	63408A	1	Frame	x	x			x											
	63409A	1	Frame			x													
	63411A	1	Frame				x												
	63419A	1	Frame						x										

Note: Coil and Tank Assembly (part no. 61627A) for models 385 BD, 420 IBD, 315 BD & 385T/C includes items: 21, 22, 23, 24, 25, 26, 28, 33, & 34.

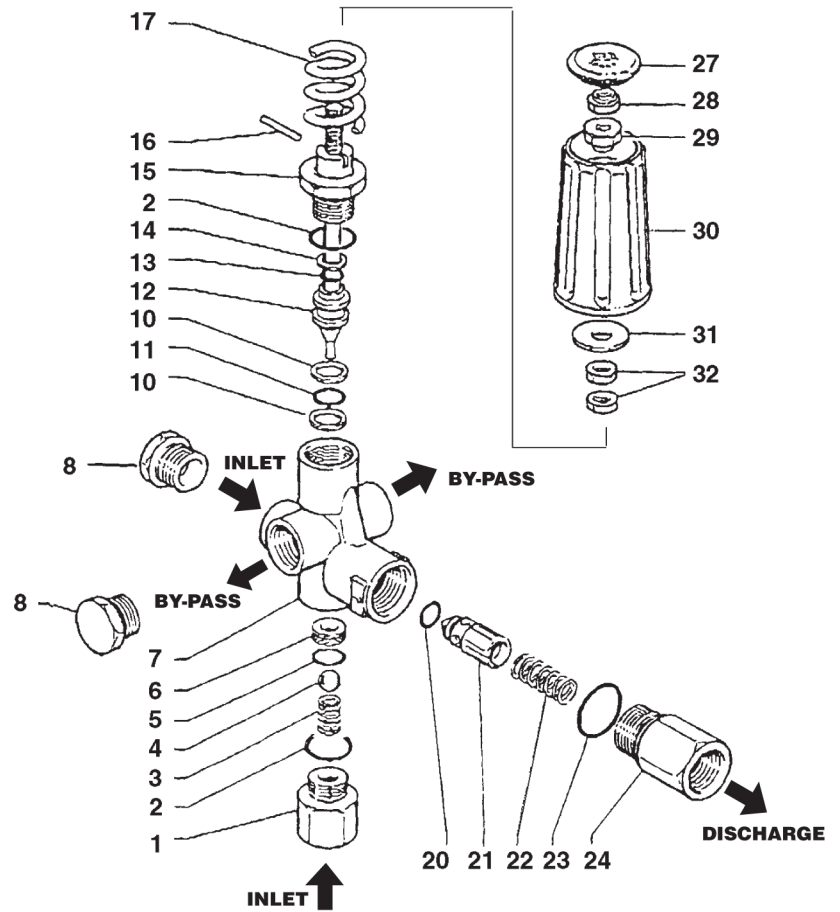
Note: Coil and Tank Assembly (part no. 61630A) for model 210 BD includes items: 21, 22, 23, 24, 25, 26, 28, 33, & 34.

Note: Coil and Tank Assembly (part no. 61662A) for model 420IBD includes items: 21, 22, 23, 24, 25,26,28, & 33

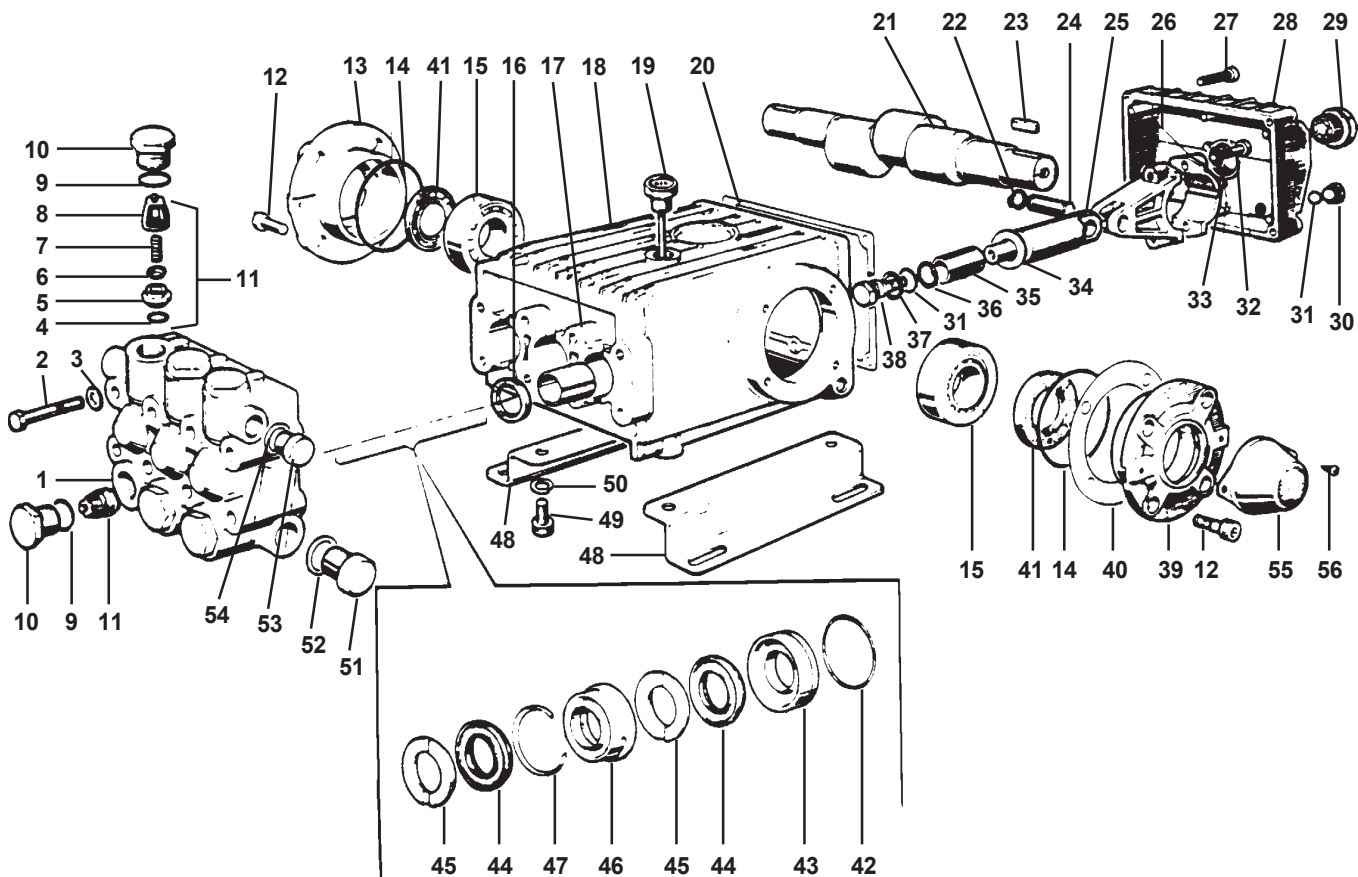
DelcoBeltDriveEqualizers
 Unloader Valve Parts List - Model 420 I, 315 &, 385 only 6/92

PULSAR3 – Y60.0006.80
 UNLOADER VALVE

No.	Part No.	Description	Kit	Qty.
KIT	YKITPULSAR3KHP	Repair Kit	*	
1.	Y60005031	Inlet Fitting, 3/8 NPT-F		1
2.	Y10306800	O-ring, .676 ID x .070 CS	*	2
3.	Y60001551	Ball Spring		1
4.	Y14746100	SS Ball, 13/32	*	1
5.	Y10305901	O-Ring, .437 ID x .070 CS	*	1
6.	Y60025451	SS Seat, .551 OD x .335 ID	*	1
7.	Y60005735	Brass Body, 3/8 NPT		1
8.	Y60002531	Plug, 3/8 NPT		2
10.	Y10402100	Backup Ring	*	2
11.	Y10.317508	O-Ring, .424 ID x .103 CS	*	1
12.	Y60006123	SS Piston		1
13.	Y10317008	O-ring, .299 ID x .103 CS	*	1
14.	Y10402000	Backup Ring	*	1
15.	Y60006431	Piston Housing		1
16.	Y15102100	Locking Pin		1
17.	Y60003361	Blue Spring		1
20.	Y10321300	O-ring, .236 ID x .118 CS	*	1
21.	Y60005231	Check Valve		1
22.	Y60005351	SS Spring		1
23.	Y10307002	O-ring, .739 ID x .070 CS	*	1
24.	Y60005931	Outlet Fitting, 3/8 NPT-F		1
27.	Y60000284	Plastic Plug for Knob		1
28.	Y11458910	Zinc Nut, M8		1
29.	Y60000131	Insert M8		1
30.	Y60000384	Plastic Knob		1
31.	Y14372040	Washer, 9mm x 24mm		1
32.	Y11457331	Brass Nut, M8		2



Pump Drawing



DelcoBelt Drive Equalizer
Model 420I
Pump Parts List

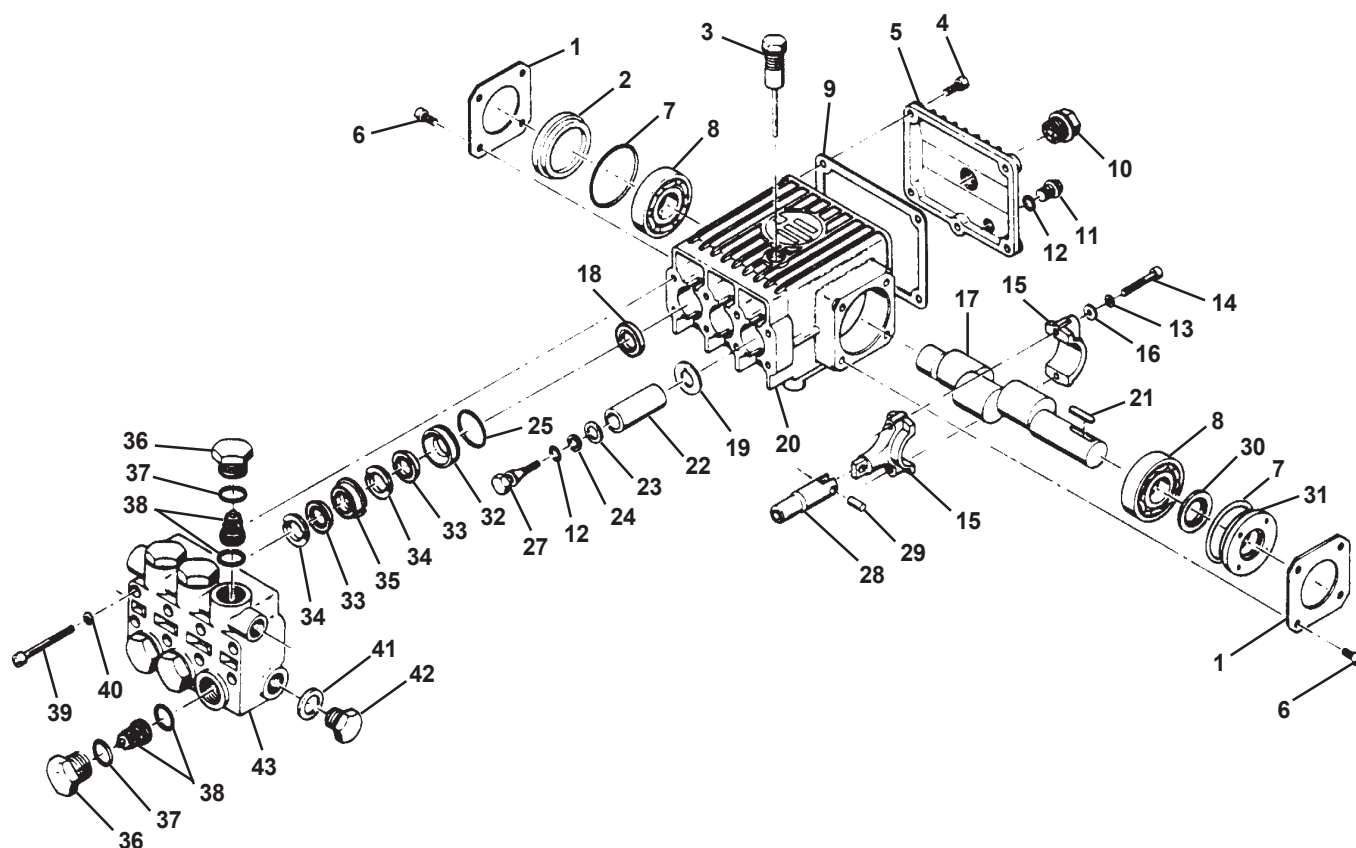
Ref.	Part No.	Description	Qty. Req.
1	195714	Manifold (Head)	1
2	191687	Screw	8
3	199585	Washer 8 UNI	8
4	196702	O-Ring Kit 195401	ref
5		Kit 195401	ref
6		Kit 195401	ref
7		Kit 195401	ref
8		Kit 195401	ref
9	196642	O-Ring Valve Cover Ref 195404	8
10	195404	Kit, Hex, Valve, Cover, O'Ring	1
11	195401	Kit, Valve, Check	1
12	198099	Screw	8
13	192320	Case, Bearing (Rear)	1
14	196643	Case, Bearing, O'Ring	2
15	191613	Bearing, Crankshaft	1
16	195402	Kit, Oil, Seal, Crankcase	1
17	193987	Guide (Bushing)	3
18	192373	Crankcase	1
19	197065	Plug, Dipstick	1
20	193894	Gasket, Crankcase Cover, Rear	1
21	192386	Crankshaft	1
22	197568	Retainer, Piston, Pin	6
23	195101	Key	1
24	196972	Pin, Plunger	3
25	197705	Piston, Rod	3
26	191326	Connecting, Rod, Asm.	3
27	198098	Screw	5
28	192324	Cover-Crankcase (Rear)	1
29	193900	Guage-Oil	1
30	197066	Plug	1
31	196644	O'Ring Ref Kit 195406	4
32	198089	Screw	6

Ref.	Part No.	Description	Qty. Req.
33	199580	Washer	6
34	199581	Washer, Kit 195406	ref
35	197075	Plunger	3
36	197627	Ring, Backup, Ref Kit 195406	3
37	199589	Washer, Ref Kit 195406	3
38	195406	Kit, Plunger, Bolt	1
39	192331	Cover, Crankcase, (Front)	1
40	198321	Shim, Thickness	2
41	195403	Kit, Oil, Seal Crankshaft	1
42	196645	O-Ring, Kit 195410, Kit 195428	ref
43		Adapter, Female, Kit 195410	ref
		Adapter, Female, Kit 195428	ref
44		V-Packing, Kit 195408	ref
		V-Packing, Kit 195428	ref
45		Adapter, Male, Kit 195407	ref
		Adapter, Male, Kit 195428	ref
46		Ring, Intermediate, Kit 195409	ref
		Ring, Intermediate, Kit 195428	ref
47		Ring, Long, Life Kit 195408	ref
		Ring, Long, Life Kit 195428	ref
48	66809A	Rails, Painted	2
49	198097	Screw	4
50	199597	Washer	4
51	197067	Plug, Inlet	1
52	199583	Washer	1
53	197069	Plug, Discharge	1
54	199584	Washer	1

Kit No.	Ref. No.	Description	Qty. Req.
195401		Check Valve Assembly Kit	1
	11	Kit has: 6-Kit, Valve Check (Ref. 4,5,6,7,8)	
195402		Crankcase Oil Seal Kit	1
	16	Kit has: 1 - Oil Seal Crankcase	
195403		Crankshaft Oil Seal Kit	1
	41	Kit has: 2 - Crankshaft Oil Seal	
195404		Hex Valve Cover, O-Ring Kit	1
	9	Kit has: 6 - O'Ring	
	10	1 - Hex Valve Cover	
195406		Plunger Bolt Kit	1
	31	Kit has: 4 - O-Ring	
	34	3 - Washer	
	36	3 - Backup Ring	
	37	3 - Washer	
	38	1 - Plunger Bolt	

Kit No.	Ref. No.	Description	Qty. Req.
195407		Male Adapter Kit	1
	45	Kit has: 1 - Adapter, Male	
195408		V-Packing Kit	1
	44	Kit has: 1 - V-Packing	
195409		Intermediate Ring Kit	1
	46	Kit has: 1 - Int. Ring	
195410		Female Adapter Kit	1
	42	Kit has: 3 - O'Ring	
	43	3 - Female Adapter	
195428		Piston Repair Kit	3
	42	Kit has: 3 - O-Ring	
	43	3 - Adapter, Female	
	44	3 - V-Packing	
	45	3 - Adapter, Male	

DelcoBelt Drive Equalizers
Models 385 &, 315
Pump Drawing



Ref.#	Part No.	Description	Qty.
	195401	Check Valve Kit:	
		Ref. #38, Valve Assembly	1
	195404	Hex Valve Cover, O-Ring Kit:	1
		Ref. # 37, O-Ring	6
		Ref. # 36, Hex Valve Cover	6
	195406	Plunger Bolt Kit	1
		Ref. #27, Plunger Bolt	3
		Ref. #12, O-Ring	3
		Ref. #24, Washer	3
		Ref. #23, Backup Ring	3
33	195419	V-Packing Kit	1
35	195420	Intermediate Ring Kit	1
34	195421	Male Adapter Kit	1
	195422	Female Adapter Kit	1
		Ref. #32, Female Adapter	3
		Ref. #25, O-Ring	3
	195423	Oil Seal Crankcase	1
		Ref. #18, Oil Seal	3
	195427	Piston Repair Kit	1
		Ref. #34, Male Adapter	1
		Ref. #33, V-Packing	1
		Ref. #35, Intermediate Ring	1
		Ref. #32, Female Adapter	1
		Ref. #25, O-Ring	1

DelcoBeltDriveEqualizers
Models 385 &, 315
Pump Parts List

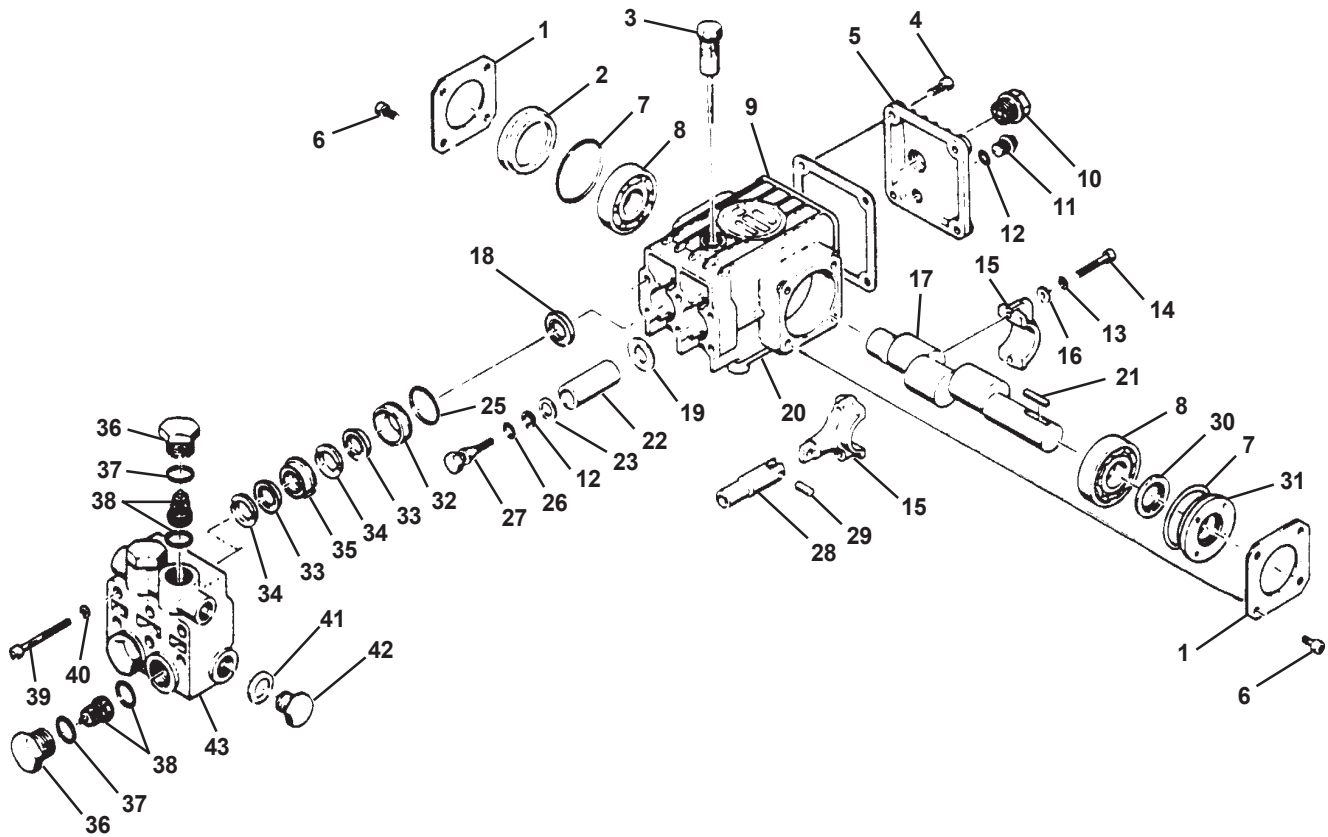
Ref.	Part No.	Description	Qty. Req.
1	192323	Cover - Crankcase	2
2	198296	Seal - Oil Bearing	1
3	197070	Plug - Oil	1
4	198092	Screw - M6 x 14 Uni Soc Hd. Cap	5
5	192322	Cover - Crankcase	1
6	198091	Screw M6 x 10 Uni Hex Hd	8
7	196647	O-Ring	2
8	191615	Bearing - Crankshaft	2
9	193895	Gasket - Crankcase Cover	1
10	193900	Gauge - Oil	1
11	197066	Plug	1
12	196644	O-Ring	4
13	199586	Washer 6.4 x 10 x 0.7	6
14	198209	Screw M6 x 35 Unit Soc Hd Cap	6
15	191328	Rod Assembly - Connecting	3
16	199580	Washer - 8.4 x 13 x 0.8	6
17	192387	Crankshaft	1
18		Seal - Oil Kit 195423	ref.
19	199581	Washer 14 x 28 x 0.5	3
20	192374	Crankcase	1
21	195101	Key	1
22	197076	Piston - Plunger	3
23	197627	Ring - Backup	3
24	199589	Washer - 14 x 18.5 x 0.5	3

Ref.	Part No.	Description	Qty. Req.
25	196646	O-Ring 3.47 x 1.78	3
26		Bolt - Plunger Kit 195406	ref.
27		Rod - Piston	3
28	197701	Pin - Piston	3
29	196967	Seal Crankshaft	1
30	198293	Seal - Oil Bearing Cover	1
31	198294	Adapter - Female Kit 195422	ref.
32		V-Packing Kit 195419	ref.
33		Adapter - Male Kit 195421	ref.
34		Ring Intermediate Kit 195420	ref.
35		Cover - Valve Hex Kit 195404	ref.
36		O-Ring	6
37	196642	Valve Assembly Check - Kit 195401	ref.
38		Screw M8 x 60 Uni	8
39	191688	Washer 8.4 x 13 x 0.8	1
40	199580	Washer 21.5 x 27 x 1.5	1
41	199583	Plug - Drain Inlet	1
42	197067	Manifold	1
43	195744		

Kit No.	Ref. No.	Description	Qty. Req.
195401		Check Valve Kit	1
	38	Kit has: 1 - Valve Assembly	
195404		Hex Valve Cover, O-Ring Kit	1
	37	Kit has: 6 - ORing	
	36	6 - Hex Valve Cover	
195406		Plunger Bolt Kit	1
	27	Kit has: 3 - Plunger Bolt	
	12	3 - O-Ring	
	24	3 - Washer	
	23	3 - Backup Ring	
195419		V-Packing Kit	1
195420		Intermediate Ring Kit	1
195421		Male Adapter Kit	1
195422		Female Adapter Kit	1
	32	Kit has: 3 - Female Adapter	
	25	3 - O-Ring	

Kit No.	Ref. No.	Description	Qty. Req.
195423		Oil Seal Crankcase	1
	18	Kit has: 3 - Oil Seal	
195427		Piston Repair Kit	3
	34	Kit has: 1 - Male Adapter	
	33	1 - V-Packing	
	35	1 - Intermediate Ring	
	32	1 - Female Adapter	
	25	1 - O-Ring	

**Delco Belt Drive Equalizer
Model 210
Pump Drawing**



**Delco Belt Drive Equalizer
Model 210
Pump Parts List**

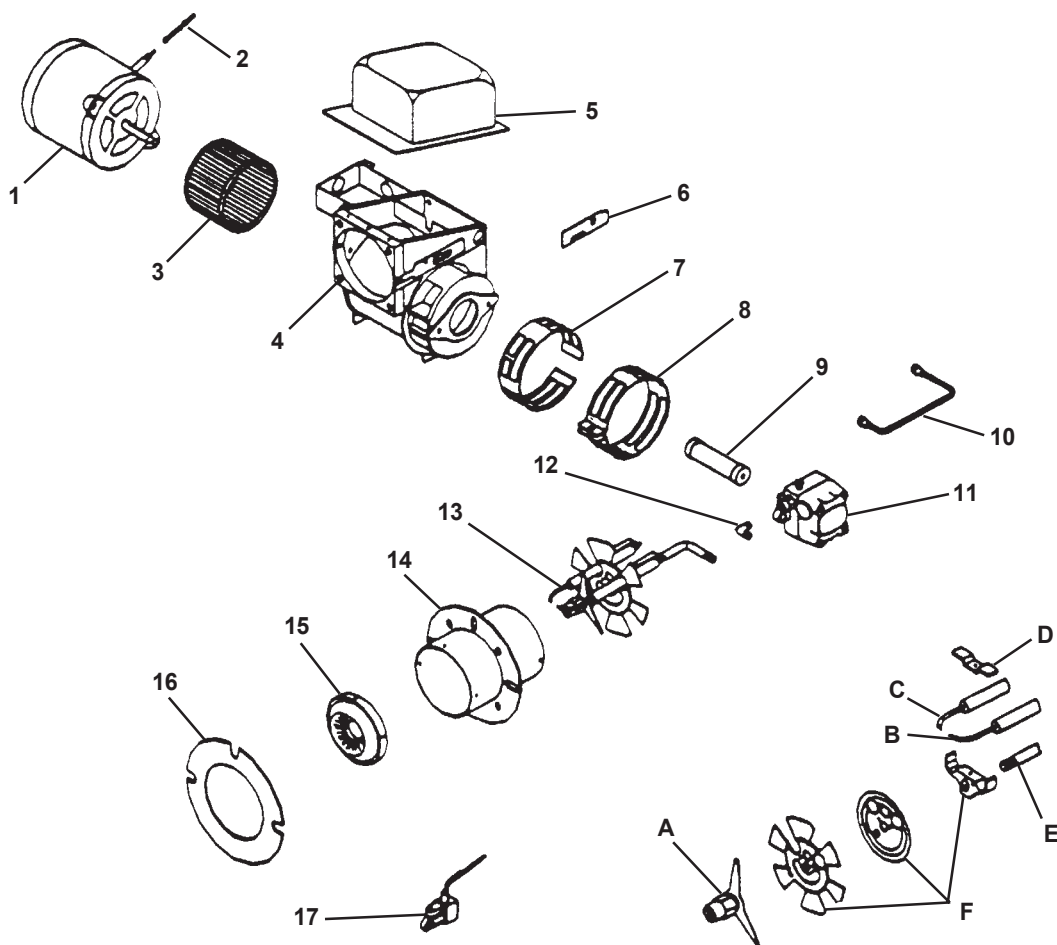
Ref.	Part No.	Description	Qty. Req.
1	192323	Cover - Crankcase	2
2	198296	Seal - Oil Bearing	1
3	197070	Plug - Oil	1
4	198092	Screw - M6 x 14 Uni Soc Hd. Cap	4
5	192306	Cover - Crankcase	1
6	198091	Screw M6 x 10 Hex	8
7	196647	O-Ring	2
8	191615	Bearing - Crankshaft	2
9	193889	Gasket - Crankcase Cover	1
10	193900	Gauge - Oil	1
11	197066	Plug	1
12	196644	O-Ring	4
13	199586	Washer 6.4 x 10 x 0.7	4
14	198209	Screw M6 x 35 Unit Soc Hd Cap	4
15	191328	Rod Assembly - Connecting	2
16	199586	Washer -6.4 x 10 x.07	4
17	192410	Crankshaft	1
18		Seal - Oil Kit 195423	ref.
19	199581	Washer 14 x 28 x 0.5	2
20	192401	Crankcase	1
21	195101	Key	1
22	197076	Piston - Plunger	2
23	197627	Ring - Backup	2
24			4

Ref.	Part No.	Description	Qty. Req.
25	196646	O-Ring 3.47 x 1.78	2
26	199589	Wsher 14 x 18.5 x 0.5	2
27		Bolt - Plunger Kit 195406	ref.
28	197707	Rod - Piston	2
29	196967	Pin - Piston	2
30	198293	Seal - Oil Crankshaft	1
31	198294	Seal - Oil Bearing Cover	1
32		Adapter - Female Kit 195422	ref.
33		V-Packing Kit 195419	ref.
34		Adapter - Male Kit 195421	ref.
35		Ring Intermediate Kit 195420	ref.
36		Cover - Valve Hex Kit 195404	ref.
37	196642	O-Ring	4
38		Valve Assembly Check - Kit 195401	ref.
39	191688	Screw M8 x 60 Uni	8
40	199580	Washer 8.4 x 13 x 0.8	6
41	195694	Manifold	1
42	197067	Plug - Drain Inlet	1

Kit No.	Ref. No.	Description	Qty. Req.
195401		Check Valve Kit	1
	38	Kit has: 1 - Valve Assembly	
195404		Hex Valve Cover, O-Ring Kit	1
	37	Kit has: 6 - ORing	
	36	6 - Hex Valve Cover	
195406		Plunger Bolt Kit	1
	27	Kit has: 3 - Plunger Bolt	
	12	3 - O-Ring	
	26	3 - Washer	
	23	3 - Backup Ring	
195419		V-Packing Kit	1
	33	Kit has: 6 - V-Packing	
195420		Intermediate Ring Kit	1
	35	Kit has: 3 - Intermediate Ring	

Kit No.	Ref. No.	Description	Qty. Req.
195421	34	Male Adapter Kit	1
195422		Female Adapter Kit	1
	32	Kit has: 3 - Female Adapter	
	25	3 - O-Ring	
195423		Oil Seal Crankcase	1
	18	Kit has: 3 - Oil Seal	
195427		Piston Repair Kit	2
	34	Kit has: 1 - Male Adapter	
	33	1 - V-Packing	
	35	1 - Intermediate Ring	
	32	1 - Female Adapter	
	25	1 - O-Ring	

Delco Belt Drive Equalizer
Model 420 I &, 315 Burner Drawing and Part List

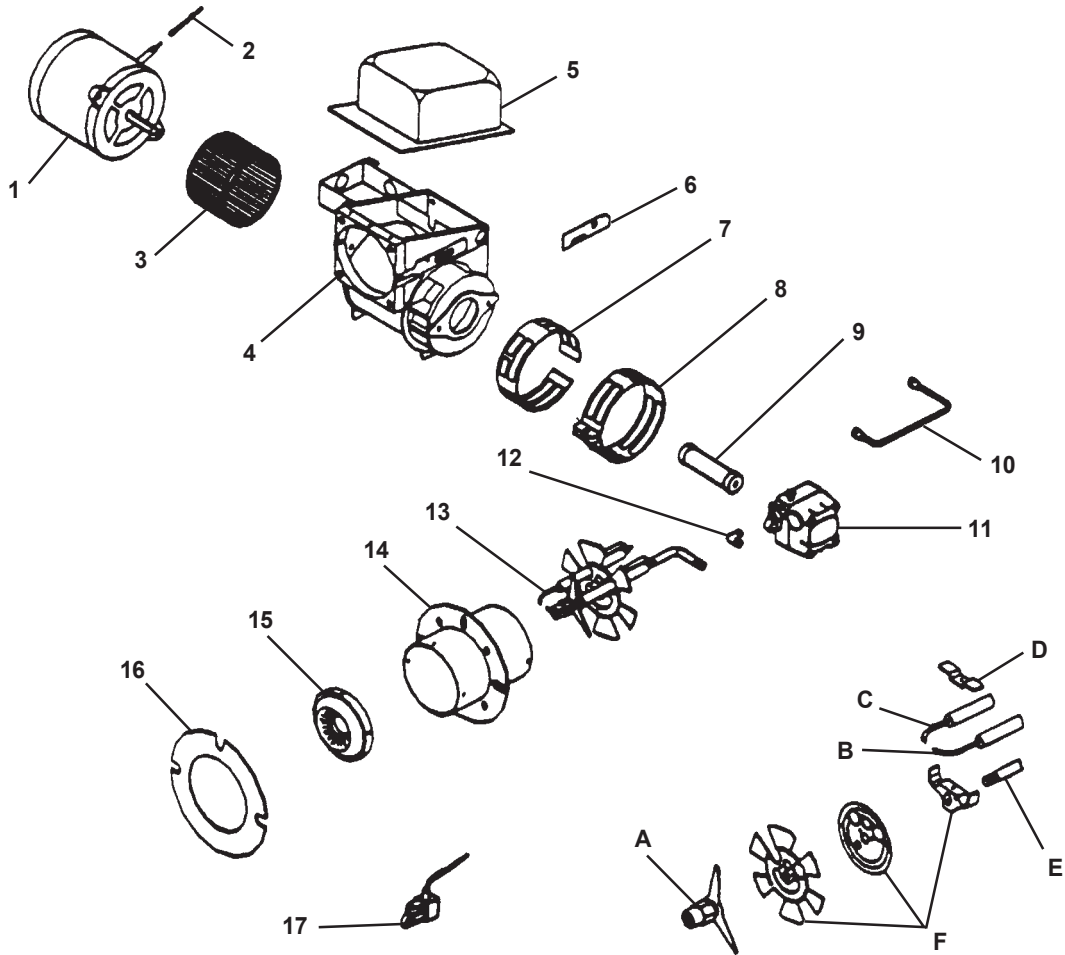


Ref.	Part No.	Description	Qty.
1	195758	Motor	1
2	192293	Motor Cord Cover	1
3	50510A	Blower, Wheel	1
4	194413	Housing-Burner Fan	1
5	198602	Transformer	1
6	52747A	Slot, Burner-Cover	1
7	191525	Band, Air-Inner	1
8	191526	Band, Air-Outer	1
9	192301	Coupling	1
10	55634A	Oil, Line, Asm, Burner	1
11	197216	Pump, Fuel Unit	1
12	193107	Elbow-Oil Line	1
13	54237A	Gun, Burner	1
A	50330A	Nozzle, Adapter	1
B	13701A	Electrode Assembly (LH)	1
C	13700A	Electrode Assembly (RH)	1
D	51816A	Electrode Clamp	1
E	197021	Oil Pipe - Fitting	1
F	56427A	Support Assembly	1
14	59305A	Air Tube, Flange Asm.	1
15	191757	Burner, Cone	1
16	193871	Gasket	2
17*	59748A	Valve-Solenoid 220V (w/trigger control models only)	1
	59747A	Valve-Solenoid 115V (w/trigger control models only)	
18	195609	Locknut, Oil Line	1
19	51818A	Flex, Conduit	1

Note: #17 includes:

50715A Bolt Fuel Valve (1)
58142A Seal Washer (2)
192142 Coil Solenoid 115V
192143 Coil Solenoid 220V
(not shown)

DelcoBeltDriveEqualizer
Model 210 and 385 Burner Drawing and Part List

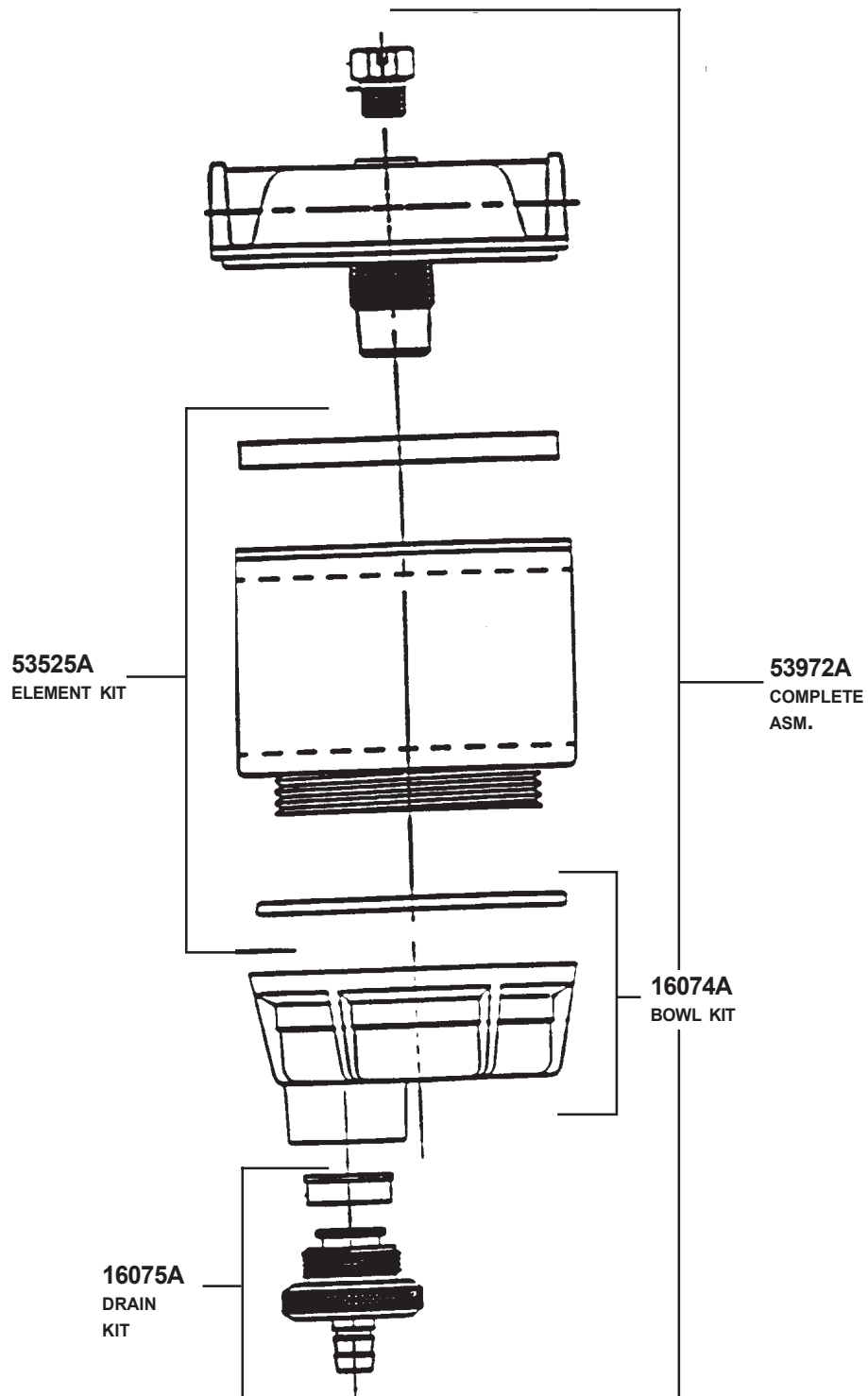


Note: #17 includes :

50715A- Bolt Fuel Valve (1)
58142A- Seal Washer (2)
192142 - Coil Solenoid 115V
192143 - Coil Solenoid 220V
(not shown)

Ref.	Part No.	Description	Qty.
1	44629A	Motor	1
2	52746A	Motor Cord Cover	1
3	50664A	Blower Wheel	1
4	54861A	Fan Housing Assembly	1
5	48410A	Transformer Base	1
6	52747A	Slot Cover	1
7	50502A	Inner Air Band	1
8	50503A	Outer Air Band	1
9	52643A	Coupling	1
10	55634A	Oil Line Assembly	1
11	197216	Fuel Unit	1
12	193107	Oil Line Elbow	1
13	54227A	Gun Assembly	1
a	50330A	Nozzle Adapter	1
b	42505A	Electrode Assembly (LH)	1
c	42506A	Electrode Assembly (RH)	1
d	51816A	Electrode Clamp	1
e	54008A	Oil Pipe - Fitting	1
f	56427A	Support Assembly	1
14	59304A	Air Tube/Flange	1
15	51817A	Air Cone	1
16	193871	Gasket	2
17*	59748A	Valve - Solenoid 220V (w/ trigger control models only)	1
	59747A	Valve - Solenoid 115V (w/ trigger control models only)	1
18	195609	Gun Lock	1
19	51818A	Flex Conduit	1

DelcoBeltDriveEqualizer
Fuel Filter Components
(Generic, must specify brand when ordering)



Delco Belt Drive Equalizers
Models: 420IBD and 315BD
230V w/Timer Schematic Drawing

