

**NEVER LEAVE THE HEATER UNATTENDED WHILE BURNING!**

If you have questions or comments, contact us.

Pour toute question ou tout commentaire, nous contacter.

Llámenos si tiene alguna pregunta o comentario.

**855-805-5745 • [www.DEWALT.com](http://www.DEWALT.com)**

**INSTRUCTION MANUAL**

**GUIDE DE UTILISATION**

**MANUAL DE INSTRUCCIONES**

# DEWALT®

**DXH80KTHC, DXH140KTHC, DXH210KTHCX**

**Kerosene Forced-air Heater**

**Appareil de chauffage à air pulsé au Kérosène**

**Calentador Caldeo a aire forzado a Kerosene**

**SAVE THESE INSTRUCTIONS  
CONSERVEZ CES INSTRUCTIONS  
GUARDE ESTAS INSTRUCCIONES**

**⚠ WARNING: READ INSTRUCTIONS**

**CAREFULLY:** Read and follow all instructions. Place instructions in a safe place for future reference. Do not allow anyone who has not read these instructions to assemble, adjust or operate the heater.

**⚠ AVERTISSEMENT: VEUILLEZ LIRE ATTENTIVEMENT**

**LES INSTRUCTIONS :** Lisez et observez toutes les instructions. Conservez ces instructions dans un endroit sécuritaire pour vous y référer ultérieurement. Interdisez à quiconque n'ayant pas lu les présentes directives d'assembler, de régler ou de faire fonctionner cette fournaise.

**⚠ ADVERTENCIA: LEA CUIDADOSAMENTE**

**LAS INSTRUCCIONES:** Lea y siga todas las instrucciones. Conserve estas instrucciones en un lugar seguro para futura referencia. No permita que nadie que no haya leído estas instrucciones arme, ajuste o use el calentador.

# NEVER LEAVE THE HEATER UNATTENDED WHILE BURNING!

## Definitions: Safety Guidelines

The definitions below describe the level of severity for each signal word. Please read the manual and pay attention to these symbols.

⚠ **DANGER:** Indicates an imminently hazardous situation which, if not avoided, **will** result in **death or serious injury**.

⚠ **WARNING:** Indicates a potentially hazardous situation which, if not avoided, **could** result in **death or serious injury**.

⚠ **CAUTION:** Indicates a potentially hazardous situation which, if not avoided, **may** result in **minor or moderate injury**.

**NOTICE:** Indicates a practice not related to personal injury which, if not avoided, **may** result in **property damage**.

⚠ **WARNING:** FIRE BURN, INHALATION, AND EXPLOSION HAZARD. KEEP SOLID COMBUSTIBLES, SUCH AS BUILDING MATERIALS, PAPER, OR CARDBOARD, A SAFE DISTANCE AWAY FROM THE HEATER AS RECOMMENDED BY THE INSTRUCTIONS. NEVER USE THE HEATER IN SPACES WHICH DO OR MAY CONTAIN VOLATILE OR AIRBORNE COMBUSTIBLES, OR PRODUCTS SUCH AS GASOLINE, SOLVENTS, PAINT THINNER, DUST PARTICLES OR UNKNOWN CHEMICALS.

## ⚠ **WARNING: GENERAL HAZARDS**

*FAILURE TO COMPLY WITH THE PRECAUTIONS AND INSTRUCTIONS PROVIDED WITH THIS HEATER, CAN RESULT IN DEATH, SERIOUS BODILY INJURY AND PROPERTY LOSS OR DAMAGE FROM HAZARDS OF FIRE, EXPLOSION, BURN, ASPHYXIATION, CARBON MONOXIDE POISONING, AND/OR ELECTRICAL SHOCK.*

*ONLY PERSONS WHO CAN UNDERSTAND AND FOLLOW THE INSTRUCTIONS SHOULD USE OR SERVICE THIS HEATER.*

*IF YOU NEED ASSISTANCE OR HEATER INFORMATION SUCH AS AN INSTRUCTIONS MANUAL, LABELS, ETC., CONTACT THE MANUFACTURER. SAVE THESE INSTRUCTIONS FOR FUTURE REFERENCE.*

⚠ **WARNING:** Fuels used in liquefied propane gas appliances, and the products of combustion of such fuel, can expose you to chemicals including benzene, which is known to the State of California to cause cancer and cause birth defects or other reproductive harm. For more information visit [www.P65Warnings.ca.gov](http://www.P65Warnings.ca.gov).

⚠ **WARNING:** This product can expose you to chemicals including lead and lead compounds, which are known to the State of California to cause cancer and birth defects or other reproductive harm. Wash your hands after handling this product. For more information visit [www.P65Warnings.ca.gov](http://www.P65Warnings.ca.gov).

⚠ **WARNING:** CARBON MONOXIDE CAN KILL YOU  
USING A PORTABLE HEATER IN AN ENCLOSED AREA CAN PRODUCE DEADLY CARBON MONOXIDE.

⚠ **WARNING:** NOT FOR HOME OR RECREATIONAL VEHICLE USE.

This is an unvented gas-fired portable heater. It uses air (oxygen) from the area in which it is used. Adequate combustion and ventilation air must be provided. Refer to page 4.

## ⚠ **WARNING:**

- DO NOT USE GASOLINE, NAPHTHA OR VOLATILE FUELS.
- STOP HEATER AND ALLOW TO COOL BEFORE ADDING FUELS.
- ALWAYS FILL OUTDOORS AWAY FROM OPEN FLAME.
- DO NOT USE EXTERNAL FUEL SOURCE.
- DO NOT OPERATE HEATER WHERE FLAMMABLE LIQUIDS OR VAPORS MAY BE PRESENT.
- DO NOT START HEATER WHEN CHAMBER IS HOT.
- DO NOT START HEATER WHEN EXCESS FUEL HAS ACCUMULATED IN THE CHAMBER.
- DO NOT PLACE COOKING UTENSILS ON TOP OF THE HEATER.
- PLUG ELECTRICAL CORD INTO A PROPERLY GROUNDED THREE-PRONG RECEPTACLE.

## ⚠ **WARNING:** For Model DXH80KTHC

Not suitable for use on wood floors or other combustible materials. When used the heater should rest on a suitable insulating material at least 1 inch thick and extending 3 feet or more beyond the heater in all directions.

# NEVER LEAVE THE HEATER UNATTENDED WHILE BURNING!

## Heater Specifications

CAUTION: CSA certified for use with only No. 1-K kerosene fuel.

Factory Tested: Kerosene, Diesel #1 and #2, Fuel Oil #1 and #2, JP8 (Jet A Fuel)

Model	DXH80KTHC	DXH140KTHC	DXH210KTHCX
Burn Rate	80,000 BTU/hr (23.4 kW)	140,000 BTU/hr (41.2 kW)	210,000 BTU/hr (61.5 kW)
Fuel Rate	.59 gal/hr (3.9 L/hr)	1.0 gal/hr (3.9 L/hr)	1.6 gal/hr (6.0 L/hr)
Electrical Input	115 V, 60 HZ, 1 Ø, 4.0 A	115 V, 60 HZ, 1 Ø, 5.5 A	115 V, 60 HZ, 1 Ø, 5.5 A
Line Protection	10 A	10 A	10 A
Min. operating voltage	110 V	110 V	110 V
Pressure Setting	4.2 psig (29 kPa)	6.8 psig (47 kPa)	8.4 psig (58 kPa)
Max. Outlet Temp.	1300 °F (704 °C)	1300 °F (704 °C)	1300 °F (704 °C)
Fuel Tank Capacity	6 gallons (22.7 L)	10 gallons (37.9 L)	15 gallons (56.8 L)
Ignition	Direct Spark, Continuous	Direct Spark, Continuous	Direct Spark, Continuous
Spark Generator	Igniter, 12 kV, 0.36 A	Igniter, 12 kV, 0.36 A	Igniter, 12 kV, 0.36 A
Primary Safety Control	Solid State Control	Solid State Control	Solid State Control
Certification			

**⚠ WARNING: If the information in this manual is not followed exactly, a fire or explosion may result causing injury or loss of life.**

- Do not store or use gasoline or other flammable vapors and liquids in the vicinity of this or any other appliance.
- Service must be performed by a qualified service agency.

Minimum Clearances:

Outlet: 8 feet (250 cm) / Sides, Top, Rear: 3 feet (91.4 cm)

## CONTENTS

WARNINGS	2
HEATER SPECIFICATIONS	3
OPERATING & SAFETY PRECAUTIONS	4
LIGHTING/OPERATING INSTRUCTIONS	5
MAINTENANCE	5
EXPLODED VIEW AND PARTS LIST	8
WIRING DIAGRAM	11

# NEVER LEAVE THE HEATER UNATTENDED WHILE BURNING!

## ⚠ **WARNING: Operating Precautions**

This is a kerosene, direct-fired, forced air heater. Its intended use is primarily temporary heating of buildings under construction, alteration or repair.

Direct-Fired means that all of the combustion products enter the heated space. Even though this heater operates very close to 100 percent combustion efficiency, it still produces small amounts of carbon monoxide. Carbon monoxide (called CO) is toxic. CO can build up in a heated space and failure to provide adequate ventilation could result in death. The symptoms of inadequate ventilation are:

- headache
- dizziness
- burning eyes and nose
- nausea
- dry mouth or sore throat

Be sure to follow advice about ventilation in the Safety Precautions section.

Forced Air means that a blower or fan pushes the air through the heater. Proper combustion depends upon this air flow; therefore, the heater must not be revised, modified or operated with parts removed or missing. Likewise, safety systems must not be circumvented or modified in order to operate the heater.

When the heater is to be operated in the presence of other people the user is responsible for properly acquainting those present with the safety precautions and instructions, and of the hazards involved.

## ⚠ **WARNING: Safety Precautions**

**THIS IS A HEATING APPLIANCE. DO NOT ATTEMPT TO WARM OR COOK FOOD ON THIS HEATER.**

1. Recommended for use with No.1-K kerosene fuel. Factory tested for use with No.2-K kerosene, No.1 or No.2 Diesel, No.1 or No.2 fuel oil or JP8 Jet A fuel and these fuels may be used as well. Never use gasoline, biodiesel, oil drained from crank cases, naphtha, paint thinners, alcohol or any other highly flammable fuels.
2. Check the heater thoroughly for damage. DO NOT operate a damaged heater.
3. DO NOT modify the heater or operate a heater which has been modified from its original condition.
4. Suitable for either outdoor or indoor use where adequate ventilation is provided. Never use in areas normally for habitation. Not for use where exposed to weather.
5. Use in well ventilated areas, provide at least 2 sq. ft. (0.19 sq. m.) of opening near the floor and 2 sq. ft. (0.19 sq. m.) near the ceiling directly to outdoors. Increase air openings as marked for each additional heater.

6. Always keep combustibles, like paper and wood at least 8 ft. (250 cm) from the heater outlet and 3 ft. (91.4 cm) from the top, sides and inlet. Locate 10 ft. (3.0 m) from canvas or plastic coverings and secure them to prevent flapping movement.
7. Caution: Due to the high surface and exhaust temperatures, adults and children must observe clearances to avoid burns or clothing ignition. Do Not Touch. Keep children, clothing, and combustible away.
8. Install the heater such that it is not directly exposed to water spray, rain and/or water.
9. Never use in areas normally for habitation and/or where children may be present.
10. Operate only on a stable, level surface.
11. Do not use with duct work. Do not restrict inlet or exit.
12. Use only with electrical power specified. The electrical connection and grounding must comply with National Electrical Code – ANSI/NFPA 70 (USA) and CSA C22.1 Canadian Electrical Code, Part 1 (Canada).
13. Use only a properly grounded 3-prong receptacle or extension cord.
14. Do not move, handle, or service while hot or in operation.
15. Use only in accordance with local, state (provincial) or national requirements, ordinances and codes.

## **Operating Instructions**

### **UNPACKING**

1. Remove heater from carton.
2. Remove all protective material which may have been applied to the heater for shipment.
3. Check the heater for possible shipping damage. If any damage is found immediately contact the manufacturer at 855-805-5745.

### **OPTIONAL CORD CADDY**

1. Each heater comes with optional cord caddy kit including screws, nuts, and instructions.

### **WHEEL AND HANDLE ASSEMBLY**

Wheels and handles are found in the shipping carton along with mounting hardware. The wheels, axle and mounting hardware are in a package.

1. Handles come pre-assembled on the tank. The transport handle and support foot simply snap into place.
2. To assemble the wheels, first install one of the large lock nut onto the end of the axle.
3. Slide one wheel onto the axle next to the nut, then one spacer.
4. Slide the partially assembled axle through the wheel support frame.

# NEVER LEAVE THE HEATER UNATTENDED WHILE BURNING!

5. Slide the spacer onto the axle next to the wheel support.
6. Slide the wheel, then large last large lock nut onto the axle. Using two adjustable wrenches hold both nuts and tighten. DO NOT OVERTIGHTEN
7. Install the caps over the lock nuts to finish the wheel assembly.

## PREPARATION FOR OPERATION

1. Check the heater for possible shipping damage. If any is found, immediately contact the manufacturer at 855-805-5745.
2. Follow all WARNINGS and Precautions found in this manual.
3. Fill the fuel tank with clean kerosene. In extremely cold weather, condensation may develop in the tank and it is recommended that a tablespoon of de-icer be added for each gallon (4 liters) of fuel in the tank. When filling the heater, use at least 2 gallons (8 liters) of fuel. Be sure heater is level and do not overfill. Use a funnel or can with a long fill spout.

**IMPORTANT:** Before filling fuel tank the first time or after extended storage periods, drain the fuel tank of any moisture or condensation.

4. Locate heater at a safe distance from combustible materials.

## HEATER START UP

1. Turn thermostat to lowest setting and make sure "On/Off" switch is "Off".
  2. Plug the heater into a grounded 115V, 60 Hz, 1 Ø outlet.
  3. Start heater by pushing toggle switch to "On" position (light signifies switch is in "On" position.)
  4. Adjust thermostat to desired setting. Heater will cycle on/off as heat is required.
- In cold weather (below 10 °F [-12.2 °C] ) starting may be improved by holding a finger over the vent hole of the pump adjustment screw cap until the heater starts.
  - This unit is equipped with an interrupt circuit. The reset is integrated into the "On/Off" switch. If the unit does not start, toggle the switch to "Off", wait 5 min, and toggle the switch to "On"
  - **EXTENSION CORD REQUIREMENTS:** Up to 100' (30.5 M) use 16 awg conductor. 101' - 200' (30.5 - 61.0 m) use 14 awg conductor.

## HEATER SHUT DOWN

Push "On/Off" switch to "Off" position. For extended shutdown, unplug heater from power source.

## HEATER RESTART AFTER SAFETY SHUTDOWN

1. Toggle switch to "OFF" position
2. Wait 5 minutes
3. Restart

## Maintenance and Storage

**⚠WARNING:** To prevent personal injury, unplug the heater from the wall outlet before servicing.

For maximum efficiency and trouble-free service, make the following periodic maintenance, cleaning and inspections.

## ADJUSTING PUMP PRESSURE

Due to varying fuel viscosities and normal component wear the pump pressure on this heater may need to be adjusted.



FUEL PRESSURE ADJUSTMENT SCREW  
(located at the rear of the heater)

PRESSURE GAUGE (If Equipped)



## ADJUSTMENT PROCEDURE

1. Fill fuel tank.
2. Start heater.
3. Locate the pressure adjustment screw, located on the back of the power pack assembly and accessible by the handle of the heater.
4. Remove the rubber cap over the fuel pressure adjustment screw.
5. Using a flat bladed screw driver, turn the pump pressure adjustment screw:

- clockwise  to increase pump pressure
- counter-clockwise  to decrease pump pressure

By using the installed pressure gauge (if equipped) you may quantitatively calibrate the pressure. The manufacturer's recommended pump pressures are in the specifications chart on page 3.

6. The desired qualitative burner characteristics are that the nose cone in the combustion chamber should be cherry red with no dark spots and the flame should not extend beyond the nose cone.

## IMPROPER PRESSURE ADJUSTMENT

**Problem:** Heater does not have a strong consistent flame.

Heater smokes and spits raw fuel.

Nose cone does not get cherry red.

**Adjustment:** Pump pressure is too low.

Turn adjustment screw clockwise to increase pump pressure

**Problem:** Flame extends beyond the end of the heater.

**Adjustment:** Pump pressure is too high.

Turn adjustment screw counter clockwise to decrease pump pressure.

## Daily Maintenance Schedule

1. GENERAL. Make general visual inspection of heater for loose or damaged parts. Check nuts and bolts to insure against looseness caused by vibration or rough handling. Damaged parts should be repaired or replaced before using heater again. Check heater operation to be sure it is operating normally (See "Servicing" section for description of normal operation).
2. FILTERS. Dirty air or fuel filters will cause an imbalance in the air-fuel mixture. The best indication that this condition exists is an increase in odors or difficulty getting your heater to ignite. This heater should never be operated without the filters in place. If required, clean filters as described under "500 Hours" and "Annual Schedules".

## 500 Hour Maintenance Schedule

1. AIR INTAKE FILTER. Remove and wash the filter element with a mild detergent, dry thoroughly and replace. Do not oil the filter element. If your heater is used where there is considerable dust or dirt, clean as often as necessary (approximately every 50 hrs.).
2. REMOVE DUST. Clean heater twice a season (more often under dusty conditions). Remove accumulated dust from the transformer, burner, motor and fan blades with compressed air. Wipe area clean with a clean dry cloth. Inspect area to insure all foreign materials are removed, especially around the burner and combustion area. Safety glasses should be worn when using compressed air.
3. CAD CELL. Clean the glass portion of the cad cell with a soft dry cloth.
4. NOZZLE. Accumulation of dirt from fuel and carbon from the compressor vanes will eventually fill up the passages in the nozzle, resulting in reduction of fuel and air flow. Pressure will gradually increase giving improper fuel-air mixture and excess odor and smoke. If this occurs, replace the fuel nozzle.
5. FUEL TANK. Clean twice a season (during frequently used periods, clean twice a month). Drain and flush the fuel tank with clean fuel oil. Make sure to dispose of waste fuel properly.

## Annual Maintenance Schedule

1. AIR OUTPUT FILTER. Remove the air output filter and tap the contaminated side gently on a solid object to remove contaminants. Compressed air or liquids should not be used to clean this filter. Reinstall cleaned filter in filter body in the same position as it was when removed. If the filter appears extremely dirty, replace it with a new filter of the same type. When replacing the filter cover, be sure the gasket is firmly in place and the screws in the filter cover are tight to prevent air leaks.
2. FUEL FILTER. Remove the fuel filter from fuel line and direct compressed air through the filter in the opposite direction of fuel flow. Safety glasses should be worn when using compressed air.
3. AIR AND FUEL LINES. If the air or fuel lines are removed during cleaning, be sure all connections are tight before operating unit.

## Storage

Store the heater in a dry location free from fumes or dust.

At the end of each heating season, clean the heater as described in the MAINTENANCE section. Drain and flush the fuel tank with clean fuel. The manufacturer recommends completely filling the tank with fuel for extended storage to minimize condensation inside the tank.

It is recommended to only store kerosene in containers that are marked "KEROSENE".

## Servicing

**⚠WARNING:** A hazardous condition may result if a heater is used that has been modified or is not functioning properly.

When the heater is working normally:

- \* The flame is contained within the heater.
- \* The flame is essentially yellow.
- \* There is no strong disagreeable odor, eye burning or other physical discomfort.
- \* There is not smoke or soot internal or external to the heater.
- \* There are no unplanned or unexplained shutdowns of the heater.

## Troubleshooting

### High limit switch open circuit

1. Make sure heater is cooled off, toggle switch to "OFF" position, wait 5 minutes and retry.

### Sparks, calling for flame, but no or slow motor operation

1. Check wiring to motor (per wiring schematic in manual)
2. Make sure that the pressure gauge is in place and not damaged
3. Adjust pressure for proper heater operation per manual
4. With heater disconnected from AC source, rotate fan clockwise to verify motor is free
5. Remove air filter housing from motor and inspect the pump rotor for damage. If damaged, replace rotor assembly.
6. If wiring is correct, pump rotor is okay, and motor is not rotating freely, replace motor or power-pack assembly.
7. If problem persists, replace oil flame control assembly.
8. Check for spark arcing from the electrode assembly, to the combustion cylinder.
9. Check the cad cell for continuity.

### No Spark

1. Check length and gauge of extension cord for proper amp. draw (check page 5)
2. Check wiring to igniter (per wiring schematic in manual)
3. Check gap between electrode probes (2.3 - 3mm)
4. Still no spark, replace igniter assembly
5. Replace oil flame control assembly

### Abnormal Motor Operation - Motor overheats or Stops

1. Motor speed too low (Motor should operate at 3450 rpm) - Replace motor
2. With heater disconnected from AC source, rotate fan clockwise to verify motor is free
3. Remove air filter housing from motor and inspect the pump rotor for damage. If damaged, replace rotor assembly
4. If wiring is correct, pump rotor is okay, and motor is not rotating freely, replace motor or power-pack assembly
5. Replace oil flame control assembly

### Unable to Detect Flame

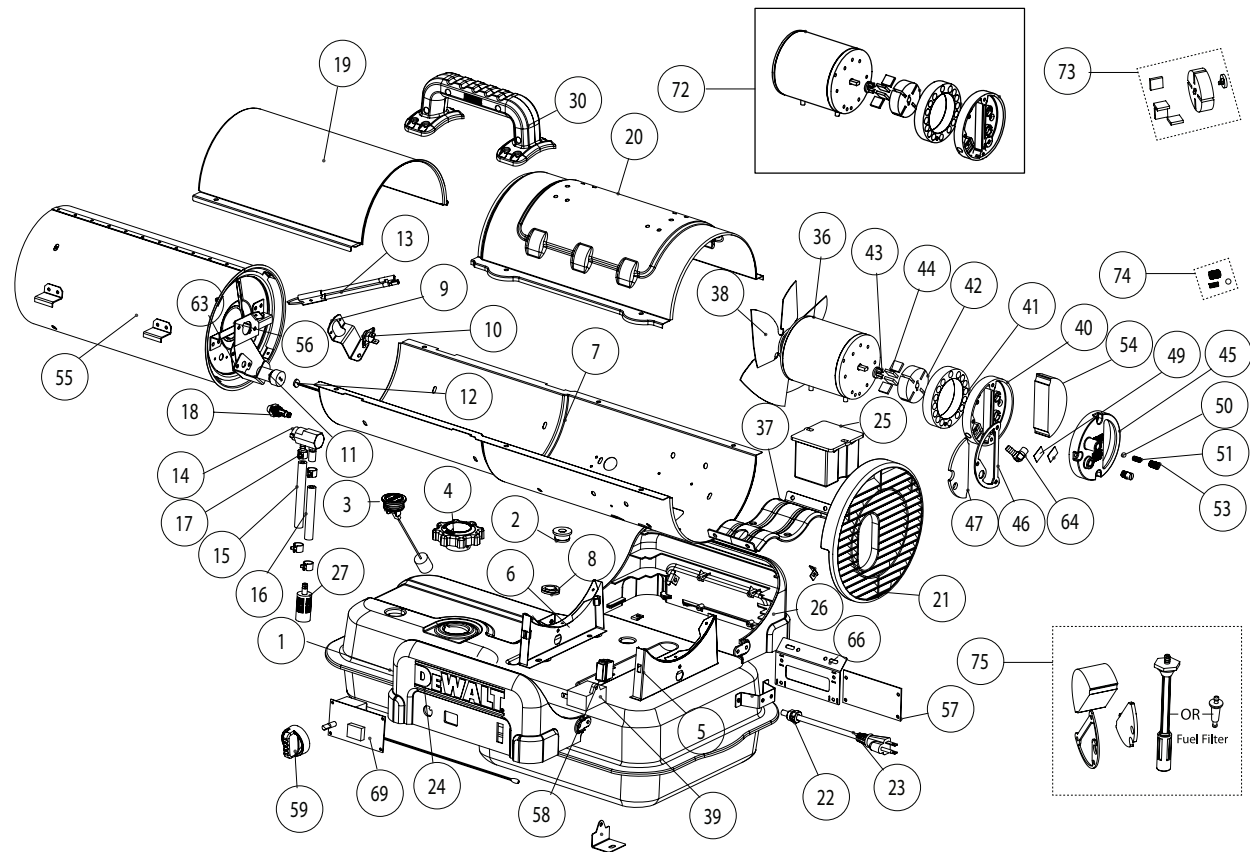
1. Check wiring to cad cell (per wiring schematic in manual)
2. Clean cad cell photo cell
  - a) Slide cad cell out of cad cell holder
  - b) Push the photo cell out of the black rubber cad cell housing by pushing on the 2 purple wires
  - c) Clean the photo cell with a soft cloth and rubbing alcohol
  - d) Pull the photo cell back into the cad cell housing and reinstall into holder
  - e) Test heater
3. If the heater still does not operate, replace cad cell
4. Replace oil flame control assembly

### Flame Control Failure

1. Check wiring in heater (per wiring schematic in manual).
2. Replace oil flame control assembly.

**NEVER LEAVE THE HEATER UNATTENDED WHILE BURNING!**

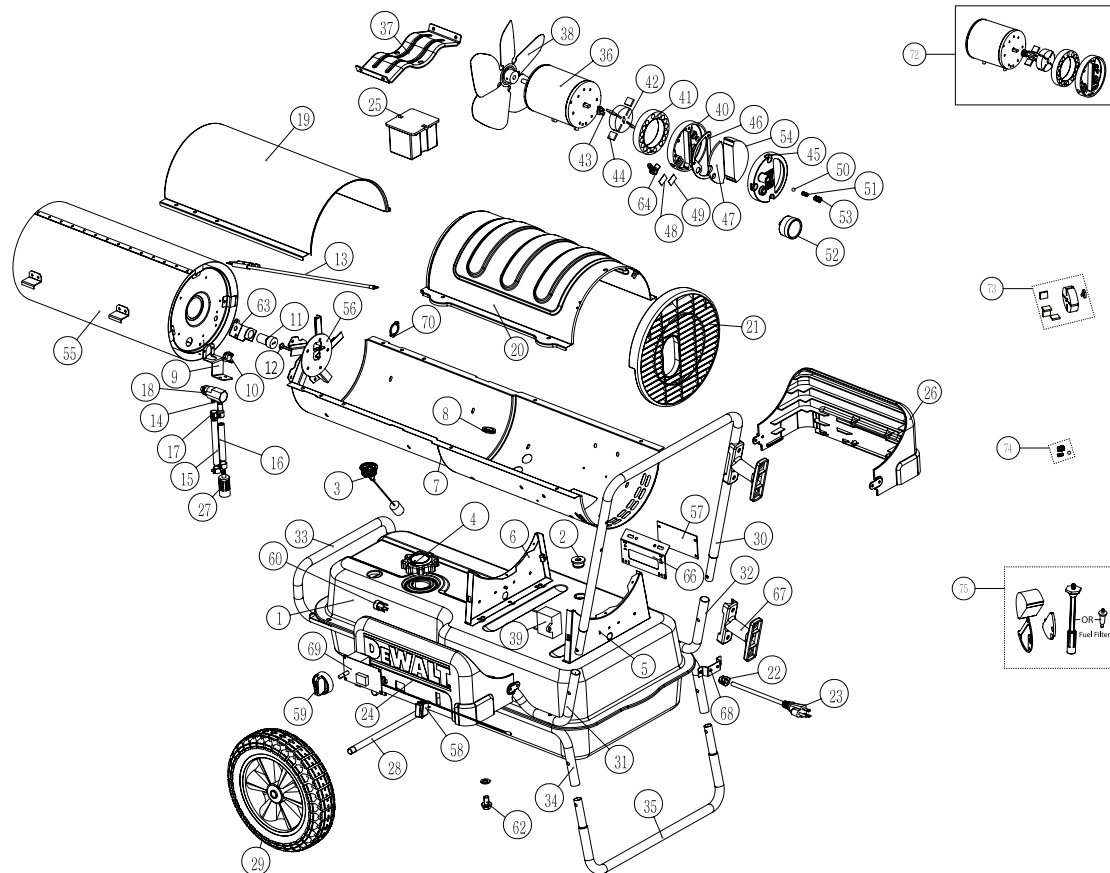
English



**DXH80KTHC**



**NEVER LEAVE THE HEATER UNATTENDED WHILE BURNING!**



**DXH140KTHC**  
**DXH210KTHCX**

# REPLACEMENT PARTS LIST

**NEVER LEAVE THE HEATER UNATTENDED WHILE BURNING!**

English

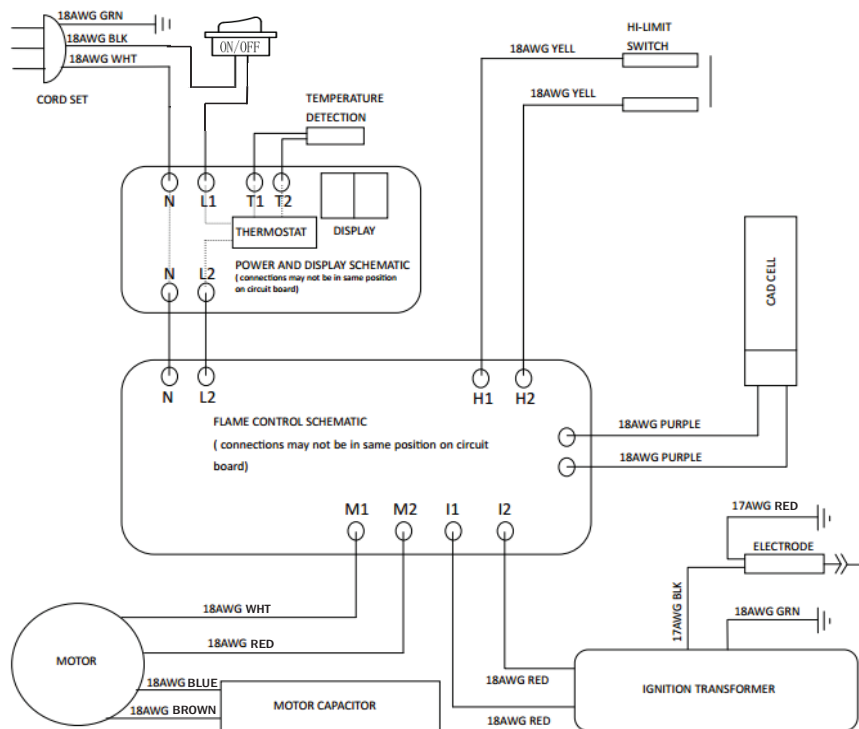
#	80K	140K	210K	Description
1	27175	27225	27226	Fuel Tank
2	27176	27176	27176	Fuel Filter Rubber Grommet
3	27177	27177	27177	Fuel Gauge
4	26959	26959	26959	Fuel Tank Cap
5	n/a	n/a	n/a	Rear Saddle Bracket
6	n/a	n/a	n/a	Front Saddle Mount
7	27210	27211	27212	Lower Barrel
8	27179	27179	27179	Grommet
9	27180	27180	27180	High Limit Switch Bracket
10	27181	27181	27181	High Limit Switch
11	F226865	F226865	F226865	Photo Cell Assembly
12	n/a	n/a	n/a	Photo Cell Sensor (see # 11)
13	27182	27182	27182	Igniter Electrode
14	27183	27183	27183	Nozzle Adapter
15	27185	27231	27231	Rubber Air Tube
16	27184	27233	27233	Rubber Fuel Tube
17	n/a	n/a	n/a	Fuel Line Clamp (source at your local hardware store)
18	27186	27235	27236	Nozzle
19	27213	27214	27215	Front Cover
20	27288	27217	27218	Rear Cover
21	27189	27237	27237	Inlet Grill
22	n/a	n/a	n/a	Strain Relief
23	n/a	n/a	n/a	Power Cord
24	27289	27283	27286	Control Side Left Saddle
25	27191	27191	27191	Transformer
26	27290	27284	27287	Right Saddle
27	n/a	n/a	n/a	Oil Filter (see # 75)
28	n/a	27239	27240	Wheel Axle
29	n/a	27241	27242	Wheel
30	27291	27274	27274	Transport Handle
31	n/a	27243	27243	Left Lift Handle
32	n/a	27245	27245	Right Lift Handle
33	n/a	27247	27248	Front Lift Handle
34	n/a	27249	27249	Lower Foot Adapter Tube
35	n/a	27251	27251	Foot
36	n/a	n/a	n/a	Motor (see # 72)
37	27193	27253	27253	Motor Bracket

#	80K	140K	210K	Description
38	27194	27255	27256	Fan Blade
39	27195	27195	271	Capacitor
40	n/a	n/a	n/a	Pump Plate (see # 72)
41	n/a	n/a	n/a	Pump Ring (see # 72)
42	n/a	n/a	n/a	Rotor (see # m and 73)
43	n/a	n/a	n/a	Plastic Pump Drive Key (see # 72 or 73)
44	n/a	n/a	n/a	Vanes (see # 72 or 73)
45	n/a	n/a	n/a	Plastic Inlet Housing (see # 72)
46	n/a	n/a	n/a	Inlet Housing Gasket (see # 75)
47	n/a	n/a	n/a	Filter (see # 75)
49	n/a	27197	n/a	Small Foam Filter (see # 75)
50	n/a	n/a	n/a	Steel Ball Bearing (see # 74)
51	n/a	n/a	n/a	Adjustment Spring (see # 74)
52	n/a	27273	27273	Pressure Gauge
53	n/a	n/a	n/a	Pump Adjustment Screw (see # 74)
54	n/a	n/a	n/a	Large Dustproof Sponge (see # 75)
55	27198	27257	27258	Combustion Chamber Assembly*
56	n/a	n/a	n/a	Air Deflector Assembly (see # 55)*
57	27199	27199	27199	Circuit Board
58	27200	27200	27200	Single Pole Switch
59	27292	27282	27282	Thermostat Knob
60	n/a	27260	27260	Handle Tube Plug
62	n/a	27262	27262	Drain Plug with Gasket
63	27202	27202	27202	Photo Cell Bracket
64	n/a	n/a	n/a	Brass Barb Elbow
66	27203	27203	27203	Circuit Board Bracket
67	n/a	27263	27264	Cord Wrap
68	n/a	27265	27266	Metal Standoff
69	27293	27281	27281	Thermostat Board
70	n/a	n/a	n/a	Spring Clip (210K Only)
71	n/a	27269	27269	Wheel Hardware Kit (not pictured)
72	27205	27271	27272	Power Pack
73	F226831	F226831	F226831	Rotor Kit
74	F226842	F226842	F226842	Adjustment Kit
75	F221887	F221887	F221887	Filter Kit

\* 140K Shown

**NEVER LEAVE THE HEATER UNATTENDED WHILE BURNING!**

## WIRING DIAGRAM



**DXH80KTHC**  
**DXH140KTHC**  
**DXH210KTHCX**

English

**⚠ CAUTION:** The parts lists and wiring diagram show the heater as it was constructed. Do not use a heater which is different from that shown. Heater performance is affected by air pressure setting. If there is any uncertainty about the air pressure setting, have it checked. A heater which is not working right must be repaired, but only by a trained, experienced service person.

**NEVER LEAVE THE HEATER UNATTENDED WHILE BURNING!**

English

# DEWALT®

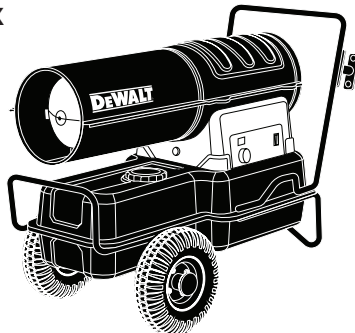
## INSTRUCTION MANUAL

*Kerosene Forced Air Heater*

**DXH80KTHC**

**DXH140KTHC**

**DXH210KTHCX**



UL733, CSA B140.8, CSA B140.9.3

### **Warning**

USE ONLY MANUFACTURER'S REPLACEMENT PARTS. USE OF ANY OTHER PARTS COULD CAUSE INJURY OR DEATH. REPLACEMENT PARTS ARE ONLY AVAILABLE DIRECT FROM THE FACTORY AND MUST BE INSTALLED BY A QUALIFIED SERVICE AGENCY.

### **PARTS ORDERING INFORMATION:**

PURCHASING: Accessories may be purchased at any DeWALT® local dealer or direct from the factory

### **FOR INFORMATION REGARDING SERVICE:**

Please call Toll-Free 855-805-5745  
[www.DEWALT.com](http://www.DEWALT.com)

Our office hours are 8:00 AM – 5:00 PM, EST, Monday through Friday.

Please include the model number, date of purchase, and description of problem in all communication.

### **LIMITED WARRANTY**

DeWALT® warrants its heaters and accessories to be free from defects in material and workmanship for a period of 2 years from date of purchase. DeWALT® will repair or replace this product free of charge if it has been proven to be defective within the 2 year period, and is returned at customer expense with proof of purchase to DeWALT® within the warranty period. DeWALT® warrants the motor to be free from defects in material and workmanship for a period of 5 years from date of purchase.

DeWALT® will repair or replace the motor free of charge if it has been proven to be defective within the 5 year period, and is returned at customer expense with proof of purchase to DeWALT® within the warranty period.

DeWALT®, GUARANTEED TOUGH® and the yellow and black color scheme are trademarks of the DeWALT Industrial Tool Co., used under license. ©2021 DeWALT. EGI/Enerco Group Inc. Under license from DeWALT Industrial Tool Co