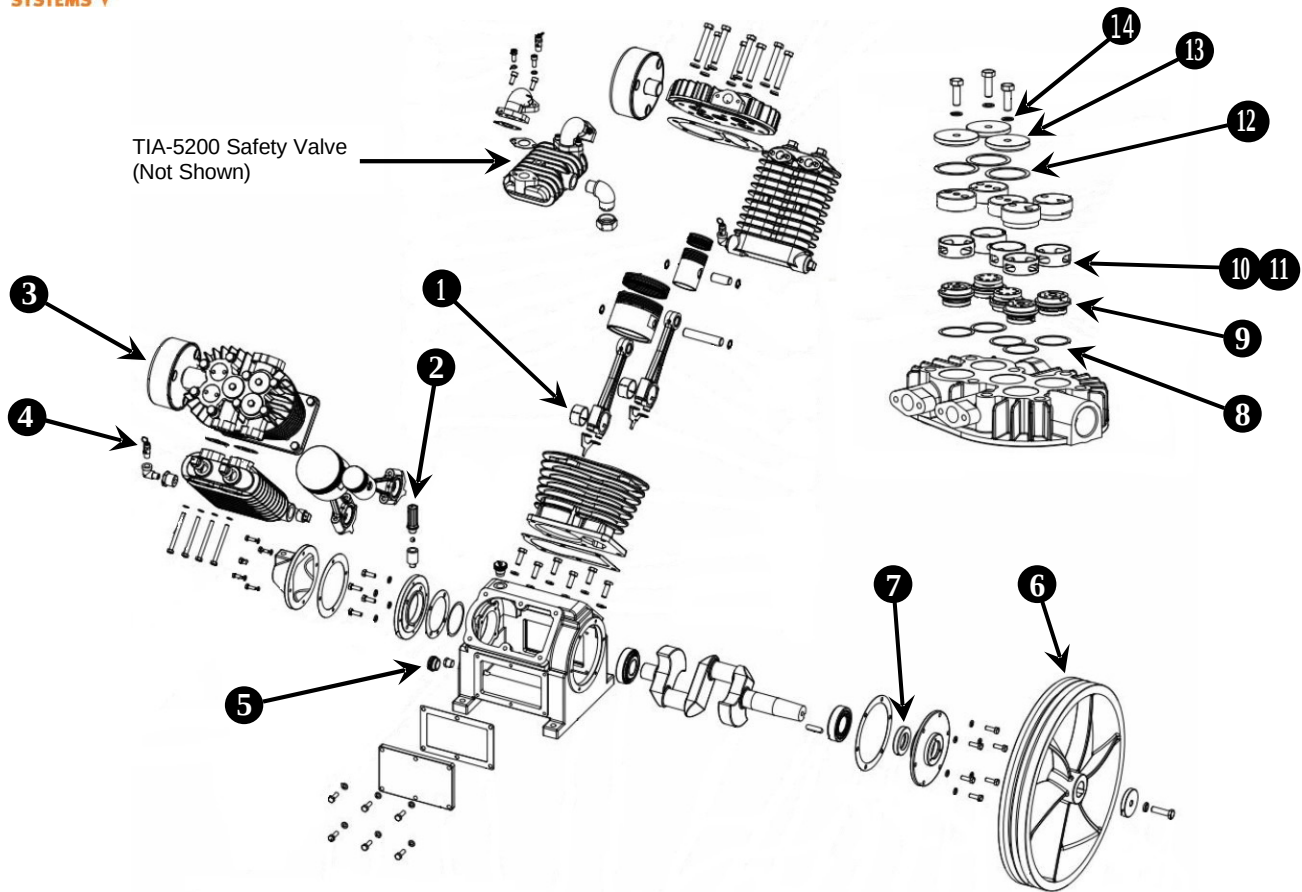


## Compressor Pump – DEV-100



No.	Part Number:	Qty:	Description:	No.	Part Number:	Qty:	Description:
1	PB-21135001	8	Bearing Insert	8	PB-11122004	10	Copper Washer (See Note B)
2	PB-21166001	1	Crankcase Breather	9	PB-21124011	10	Valve Assy (See Note B)
3	See 'Note A'	2	Air Filter Assembly	10	PB-21125004	6	Intake Valve Cap Ring
	See 'Note A'	2	Air Filter Element	11	PB-21125003	4	Exhaust Valve Cap Ring
4	TIA-5075	2	Safety Valve – 75 psi	12	PB-21157006	6	Valve Cover Gasket
5	PB-21164004	1	Oil Sight Glass (Round)	13	PB-21125005	6	Valve Cover
	SGK-100	1	Sight Glass Kit (Oval)	14	PB-11122001	24	8 mm Washer
6	PB-21121006	1	Flywheel		GK-100	1	Gasket Kit
7	PB-21161006	1	Oil Seal				

**Note A:** The Filter Assembly and internal Filter Element have changed. The older style Element is still available, and the Filter Elements are not interchangeable. Please measure the Element to determine which Filter Assembly, Filter Element, and Maintenance Kit is correct.

**Note B:** Please order (1) 'PB-11122004' Washer for every 'PB-21124011' Valve Assembly ordered.

Older Assembly	Older Filter Element	Older Filter Element Dimensions	Older Maintenance Kit
PB-21176001	PB-21177013	4-1/8" OD x 2-3/4" ID x 2"H	MK-100
New Assembly	New Filter Element	New Filter Element Dimensions	New Maintenance Kit
357-9401	357-9701	4-3/8" OD x 3" ID x 2-1/4" H	MK-100-1

### Maintenance Kits:

The appropriate Maintenance Kit for the 'DEV-100' Pump is as noted in the chart above and includes the appropriate Air Filter Elements and (1) 4 litre jug of PR-30-4 30 Weight Mineral Oil.