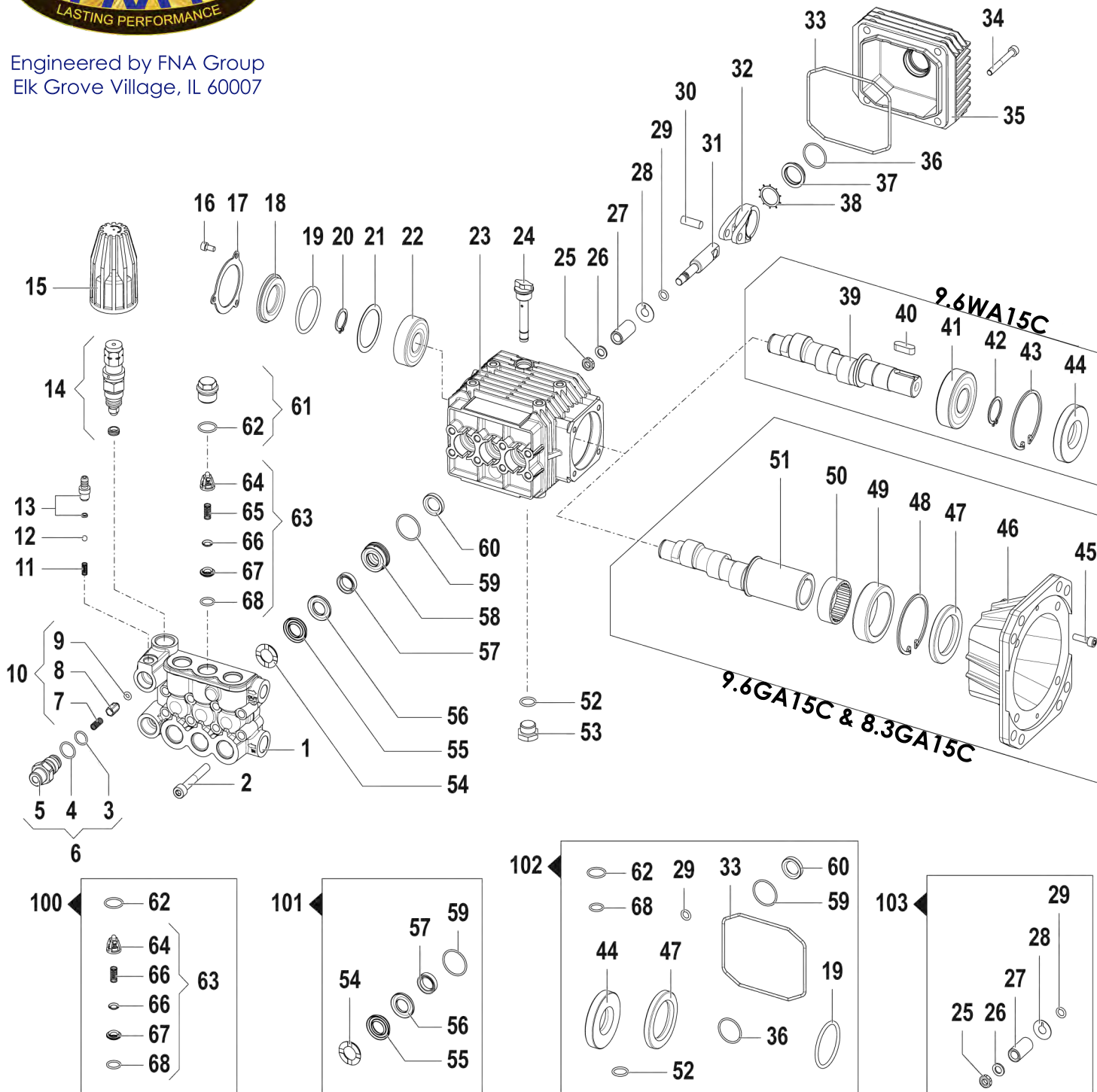




PUMP DIAGRAM

9.6WA15C, 9.6GA15C, 8.3GA15C

Engineered by FNA Group
Elk Grove Village, IL 60007



| Pumps Covered By This Document | |
|--------------------------------|----------|
| Part No. | Model |
| 7104757 | 9.6WA15C |
| 7104820 | 9.6GA15C |
| 7104858 | 8.3GA15C |

| Torque Specifications | | | | | | |
|-----------------------|----------|---------------|-------|-------|-----|-----------------|
| No. | Part No. | Description | lb.ft | lb.in | N.m | Apply To Thread |
| 2 | 7105403 | M8 x 55 Screw | 18.4 | 220 | 25 | - |
| 16 | 7105412 | M5 x 10 Screw | 3.0 | 40 | 4 | - |
| 25 | - | Piston Nut | 4.4 | 50 | 6 | Loctite 243 |
| 34 | 7105425 | M6 x 50 Screw | 6.6 | 80 | 9 | - |
| 45 | 7105436 | M6 x 20 Screw | 6.6 | 80 | 9 | - |
| 61 | 7105446 | Valve Plug | 33.2 | 400 | 45 | Loctite 243 |

PUMP COMPONENTS

9.6WA15C, 9.6GA15C, 8.3GA15C

| DWG NO. | PART NO. | DESCRIPTION | QTY. | MODELS |
|------------------|----------|-------------------------------------|------|---------------------|
| 1 | 7105402 | BRASS PUMP MANIFOLD, Ø15mm | 1 | ALL |
| 2 | 7105403 | SCREW, M8 X 55mm | 8 | ALL |
| 3 | - | O-RING, Ø1.75 X 12.42mm | 1 | ALL |
| 4 | - | O-RING, Ø1.78 X 15.6mm | 1 | ALL |
| 5 | - | INJECTOR BODY, Ø2mm-3/8" NPT(M) | 1 | ALL |
| 6 | 7105404 | INJECTOR BODY KIT, Ø2mm3/8" NPT(M) | 1 | ALL |
| 7 | - | SPRING | 1 | ALL |
| 8 | - | CHECK VALVE | 1 | ALL |
| 9 | 7105405 | O-RING, Ø2.4 X 4.3mm | 1 | ALL |
| 10 | 7105406 | CHECK VALVE KIT | 1 | ALL |
| 11 | 7105407 | DETERGENT SPRING | 1 | ALL |
| 12 | 7105408 | DETERGENT BALL | 1 | ALL |
| 13 | 7105409 | DETERGENT COUPLING | 1 | ALL |
| 14 | 7105410 | UNLOADER VALVE KIT, 3600PSI[250BAR] | 1 | ALL |
| 15 | 7105411 | UNLOADER ADJUSTMENT KNOB | 1 | ALL |
| 16 | 7105412 | SCREW, M5 X 10mm | 3 | ALL |
| 17 | 7105413 | CRANKCASE FLANGE | 1 | ALL |
| 18 | 7105414 | ALUMINUM END COVER | 1 | ALL |
| 19 | 7105415 | O-RING, Ø3.53 X 44.04mm | 1 | ALL |
| 20 | 7105416 | EXTERNAL SNAP RING, Ø20mm C72 | 1 | ALL |
| 21 | 7105417 | SPACER, Ø41 X 51.8 X 0.5mm | 1 | ALL |
| 22 | 7105418 | BALL BEARING, Ø20 X 52 X 15mm | 1 | ALL |
| 23 | 7105419 | PUMP CRANKCASE | 1 | ALL |
| 24 | 7105420 | OIL DIPSTICK | 1 | ALL |
| 25 | - | SPECIAL NUT | 3 | ALL |
| 26 | - | WASHER, Ø8.2 X 14 X 1.5mm | 3 | ALL |
| 27 | - | CERAMIC BUSHING, Ø15mm | 3 | ALL |
| 28 | - | WASHER | 3 | ALL |
| 29 | - | O-RING, Ø1.78 X 6.07mm | 3 | ALL |
| 30 | 7105421 | PISTON PIN | 3 | ALL |
| 31 | 7105422 | PISTON GUIDE | 3 | ALL |
| 32 | 7105423 | CONNECTING ROD ASSEMBLY | 3 | ALL |
| 33 | 7105424 | O-RING, Ø3.0 X 94mm | 1 | ALL |
| 34 | 7105425 | SCREW, M6 X 50mm | 4 | ALL |
| 35 | 7105426 | CRANKCASE COVER | 1 | ALL |
| 36 | 7105427 | O-RING, Ø1.78 X 23.25mm | 1 | ALL |
| 37 | 7105428 | OIL LEVEL SIGHT GLASS | 1 | ALL |
| 38 | 7105429 | SIGHT GLASS RETAINING RING, Ø28mm | 1 | ALL |
| 39 | 7105430 | CRANKSHAFT, Ø24 X 9.6mm | 1 | 9.6WA15C ONLY |
| 40 | 7105431 | SHAFT KEY, 8 X 7 X 25mm | 1 | 9.6WA15C ONLY |
| 41 | 7105432 | BALL BEARING, Ø25 X 62 X 17mm | 1 | 9.6WA15C ONLY |
| 42 | 7105433 | EXTERNAL SNAP RING, Ø25mm C72 | 1 | 9.6WA15C ONLY |
| 43 | 7105434 | INTERNAL SNAP RING, Ø62mm C72 | 1 | 9.6WA15C ONLY |
| 44 | 7105435 | OIL SEAL, Ø25 X 62 X 10/7mm | 1 | 9.6WA15C ONLY |
| 45 | 7105436 | SCREW, M6 X 20mm | 4 | 8.3GA15C & 9.6GA15C |
| 46 | 7105437 | MOUNTING FLANGE, 1.00" | 1 | 8.3GA15C & 9.6GA15C |
| 47 | 7105438 | OIL SEAL, Ø40 X 62 X 7mm | 1 | 8.3GA15C & 9.6GA15C |
| 48 | 7105439 | INTERNAL SNAP RING, Ø62mm C72 | 1 | 8.3GA15C & 9.6GA15C |
| 49 | 7105439 | BUSHING | 1 | 8.3GA15C & 9.6GA15C |
| 50 | 7105440 | ROLLER BEARING, Ø40 X 47 X 16mm | 1 | 8.3GA15C & 9.6GA15C |
| 51 | 7105441 | CRANKSHAFT, Ø1.00" X 8.3mm | 1 | 8.3GA15C |
| 51 | 7105442 | CRANKSHAFT, Ø1.00" X 9.6mm | 1 | 9.6GA15C |
| 52 | 7105443 | O-RING, Ø2 X 14mm | 1 | ALL |
| 53 | 7105444 | CAP, 3/8" GAS PIPE THREAD | 1 | ALL |
| 54 | - | PACKING HEAD RING, Ø15mm | 3 | ALL |
| 55 | - | PACKING, Ø15mm | 3 | ALL |
| 56 | - | BACK RING, Ø15mm | 3 | ALL |
| 57 | - | PACKING, Ø15 X 22 X 5.5mm | 3 | ALL |
| 58 | 7104949 | PACKING RETAINER, Ø15mm | 3 | ALL |
| 59 | - | O-RING, Ø1.78 X 26.7mm | 3 | ALL |
| 60 | 7105445 | OIL SEAL, Ø15 X 24 X 5mm | 3 | ALL |
| 61 | 7105446 | PLUG AND O-RING KIT | 6 | ALL |
| 62 | 7105447 | O-RING, Ø1.78 X 17.17mm | 6 | ALL |
| 63 | - | SUCTION/PRESSURE VALVE ASSEMBLY KIT | 6 | ALL |
| 64 | - | SUCTION/PRESSURE VALVE CAGE | 6 | ALL |
| 65 | - | VALVE SPRING | 6 | ALL |
| 66 | - | SUCTION/PRESSURE VALVE | 6 | ALL |
| 67 | - | SUCTION/PRESSURE VALVE SEAT | 6 | ALL |
| 68 | - | O-RING, Ø1.78 X 12.42mm | 6 | ALL |
| SPARE PARTS KITS | | | | |
| 100 | 7105448 | SUCTION/PRESSURE VALVE KIT | 1 | ALL |
| 101 | 7105449 | WATER SEAL KIT | 1 | ALL |
| 102 | 7105450 | OIL SEAL KIT | 1 | ALL |
| 103 | 7105451 | PISTON KIT, Ø15mm | 1 | ALL |