

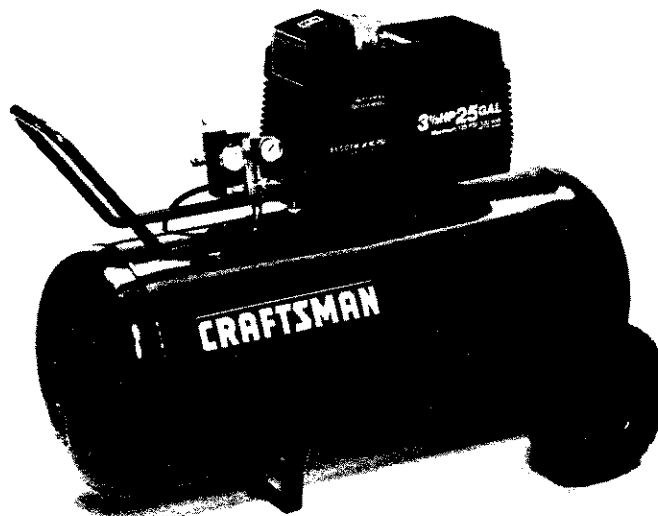
SEARS

PARTS MANUAL

**MODEL NO.
919.155730**

Important:

Before using this
equipment, read all
Safety Precautions
and both manuals.
Retain for future use.



CRAFTSMAN PERMANENTLY LUBRICATED AIR COMPRESSOR

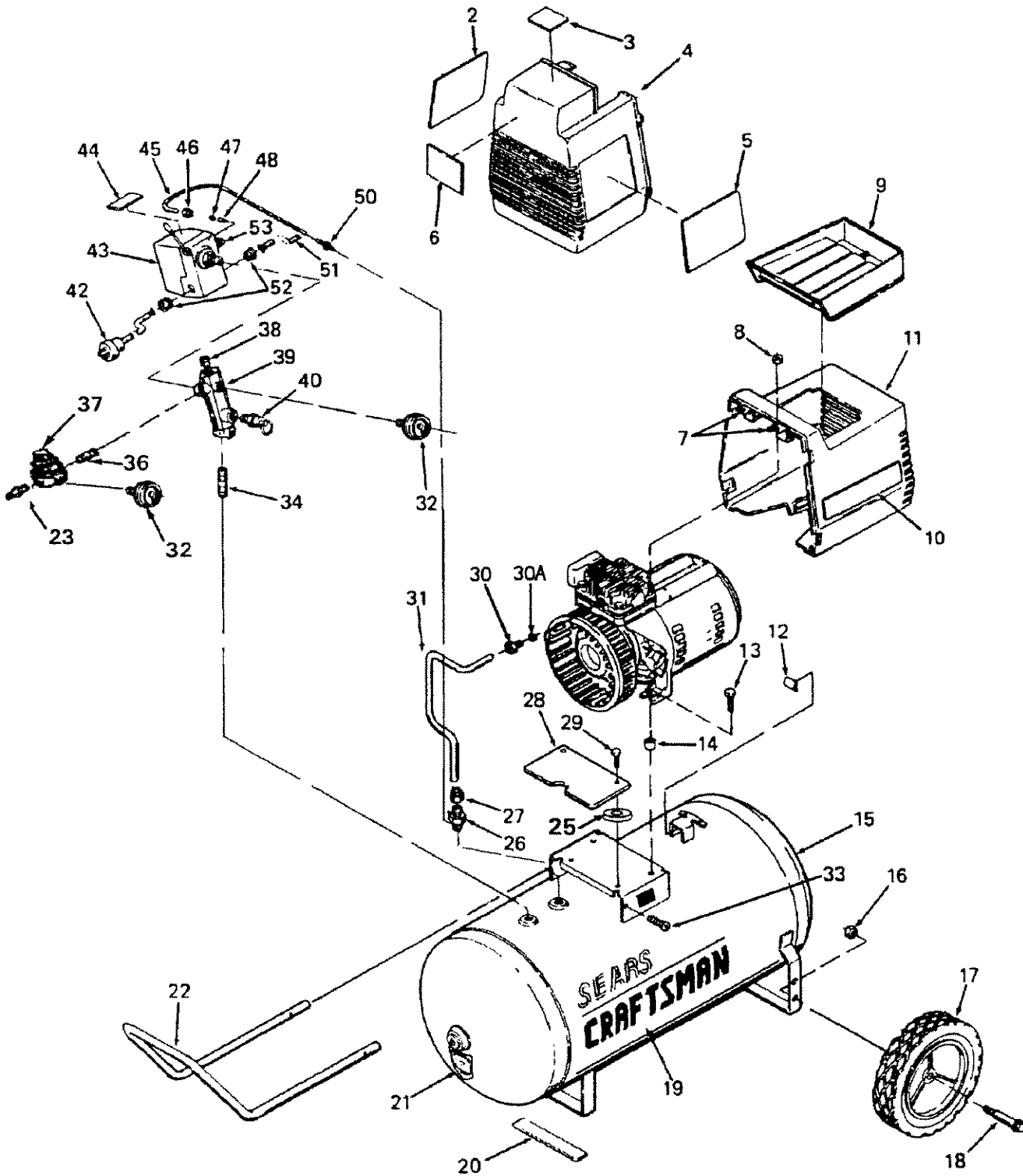
SPECIFICATION CHART

Model No.	919.155730
Horsepower	3 1/2
Displacement CFM	11.9
Bore	2 3/8"
Stroke	1.35"
Voltage-Single Phase	120/240
Minimum Branch Circuit Requirement	15 amps
Fuse Type	"Fusetron" Type T
Air Tank Capacity - GAL	25 gal. A.S.M.E.
Approximate Cut-in Pressure	100
Approximate Cut-out Pressure	125
SCFM @ 40 psig	8.5
SCFM @ 90 psig	6.8
UL Listed	Yes

Sears, Roebuck and Co., Chicago, IL 60684 U.S.A.

M-155730 10/16/91

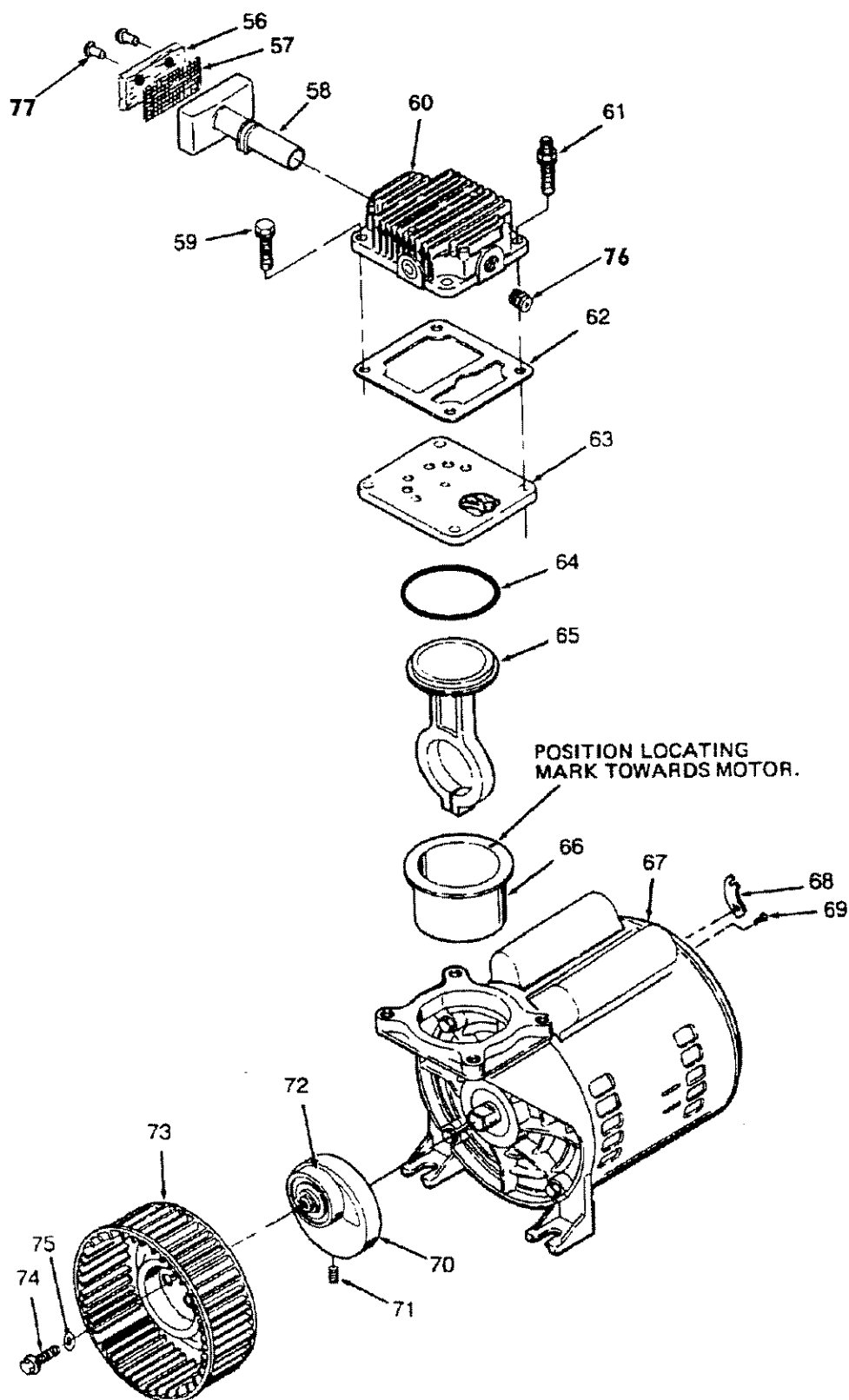
AIR COMPRESSOR DIAGRAM



PARTS LIST

KEY NO.	PART NUMBER	DESCRIPTION
1	---	Not used
2	CL-79	Model No. Label
3	LA-1779	Hot Surface Label
4	CAC-1140	Shroud - front
5	LA-2323	Performance Label
6	LA-2178	Warning Label
7	CAC-1121	Bracket (2 used - included with #11)
8	SS-655-ZN	Hex nut 1/4" 20 (2 used)
9	CAC-1080	Tool tray
10	LA-2380	H.P. Label 3.5 H.P.
11	CAC-4317	Rear shroud assembly (includes 2 ea. #7)
12	CAC-1099	U-Channel isolator
13	SSF-505	Shoulder screw (2 used)
14	CAC-1098	Isolator (2 used)
15	TA-4213	Air Tank
16	SSF-8080-ZN	Nut 3/8"-16 (2 used)
17	CAC-4313	Wheel (2 used)
18	CAC-60	Shoulder bolt 3/8"-16 X 2 1/4" (2 used)
19	LA-1811-1	Sears Craftsman Label
20	SUDL-6-1	Rubber foot strip
21	LA-1978	Drain Tank Label
22	CAC-1304-1	Handle
23	H-2099	Adapter
25	SSN-62	Nylon spacer (2 used)
26	CAC-4290-1	Check Valve
27	SSP-7813	Nut sleeve assembly (for 3/8" O.D. Tube)
28	CAC-333-1	Shroud Plate
29	SSF-1000	Screw (2 used)
30	SSP-7821	Nut (tighten until it stops against head)
30 A	CAC-1120	Silicone Sleeve
31	CAC-1155	Outlet tube
32	C-GA-345	Pressure Gauge (2 used)
33	SSF-981	Screw 1/4" AB x 3/4" long
34	SS-2072	Nipple (3/8" NPT X 1 1/2" long)
36	SS-2071	Nipple
37	CAC-4296	Regulator
38	SS-3222-CD	Pipe plug 1/4" NPT
39	CAC-365	Manifold
40	TIA-4150	Safety valve ASME
41	---	Not used
42	SUDL-403-1	Cord assembly - line
43	CAC-4221-1	Pressure switch
44	LA-1531-1	On-Off Label
45	CAC-1085	Pressure relief tube (warm tube before installing on #50)
46	STD575025	Nut (for 1/4" O.D. Tube)
47	STD575026	Ferrule (for 1/4" O.D. Tube)
48	SSP-9013	Tube insert

COMPRESSOR PUMP DIAGRAM



PARTS LIST

KEY NO.	PART NUMBER	DESCRIPTION
49	---	Not used
50	SSP-6088	Barbed Fitting
51	CAC-4215-1	Cord assembly - motor
52	SSW-7367	Strain relief (2 used)
53	KK-4315	Pressure release valve and mounting nut (included with #43)
+ 56	DAC-143	Air Filter
+ 57	DAC-142	Muffler screen
+ 58	CAC-1173-1	Intake muffler
59	SSF-990	Screw 1/4"-20 X 1 1/4" (2 used, torque 7-10 ft. lbs.)
• 60	CAC-1122-U-1	Head
61	SSF-6640	Stud 1/4"-20 X 1 1/4" (2 used, torque 7-10 ft. lbs.)
• 62	CAC-1175	Head Gasket
63	CAC-4281-1	Valve plate assembly (includes valves, restrictors & screws)
64	SSG-8156	O-ring
* 65	---	Connecting rod assembly (torque screw 30-35 in. lbs.)
* 66	---	Cylinder sleeve (position locating mark toward motor)
67	C-MO-3020	Motor 3.5 HP
68	SSW-5394	Terminal box cover
69	SSF-993	Ground screw
70	CAC-4086	Eccentric/Flywheel bearing assy. (includes 1 ea. #72)
71	SSF-3153	Screw (eccentric, torque 120-140 in. lbs.)
73	CAC-1148-1	Squirrel cage fan
74	SSF-3101	Screw #10-24 X 3/8" long (torque 30-35 in. lbs.)
75	SS-6505-CD	Washer (1/4")
• 76	DAC-140	Flow Valve
+ 77	DAC-144	Fastener Intake Filter (2 used)
		NOT ILLUSTRATED
	H-5796	Air Hose Assembly (1/4" I.D. x 15')
	SSH-8	Air Chuck
	M-155730	Parts Manual
	MG-PERMLUBE	General Manual
	SS-2707	Drain Valve

- * Key Nos. 65 & 66 can only be purchased as part of KK-4835 connecting rod kit.
- X Key No. 72 can only be purchased as part of No. 70.
- Key Nos. 60, 62 & 76 can be purchased as KK-4987 Head/Gasket/Valve Kit.

SERVICE NOTES

SERVICE NOTES

SEARS

PARTS MANUAL

SERVICE

MODEL NO.

HOW TO ORDER REPAIR PARTS

FULL ONE YEAR WARRANTY AIR COMPRESSORS

CRAFTSMAN PERMANENTLY LUBRICATED AIR COMPRESSOR

Now that you have purchased your Sears Air Compressor, should a need ever exist for repair parts or service, simply contact any Sears Service Center and most Sears, Roebuck and Co. stores. Be sure to provide all pertinent facts when you call or visit.

The model number of your Sears Compressor can be found on the label which is located on the rear of the shroud.

WHEN ORDERING REPAIR PARTS, ALWAYS GIVE THE FOLLOWING INFORMATION:

- PART NUMBER
- PART DESCRIPTION
- MODEL NUMBER
- NAME OF ITEM

If service or repair parts are required for the motor, supply all motor nameplate information including manufacturer's name.

All parts listed may be ordered from any Sears Service Center and most Sears stores.

If the parts you need are not stocked locally, your order will be electronically transmitted to a Sears Repair Parts Distribution Center for handling.

If this air compressor fails due to a defect in material or workmanship within one year from the date of purchase, RETURN IT TO THE NEAREST SEARS SERVICE CENTER/DEPARTMENT THROUGHOUT THE UNITED STATES AND SEARS WILL REPAIR IT, FREE OF CHARGE.

If this air compressor is used for commercial or rental purposes, the warranty will apply for ninety days from the date of purchase.

This warranty gives you specific legal rights and you may have other rights which vary from state to state.

Sears, Roebuck and Co., Chicago, IL 60684 U.S.A.