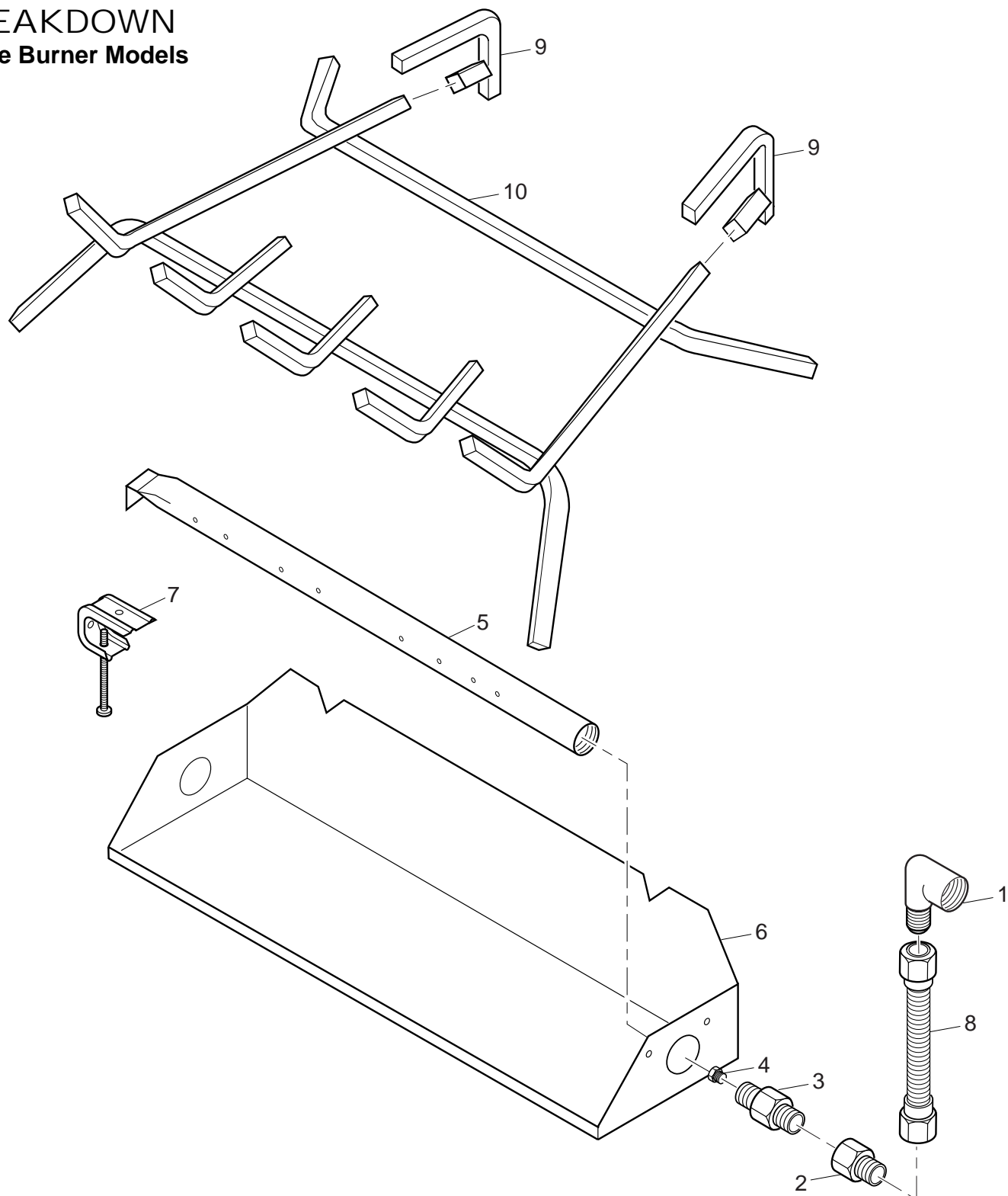


VENTED NATURAL GAS LOGS

ILLUSTRATED
PARTS
BREAKDOWN
Single Burner Models



OWNER'S MANUAL

PARTS LIST

This list contains replaceable parts used in your log set. When ordering parts, follow the instructions listed under *Replacement Parts* on page 14 of this manual.

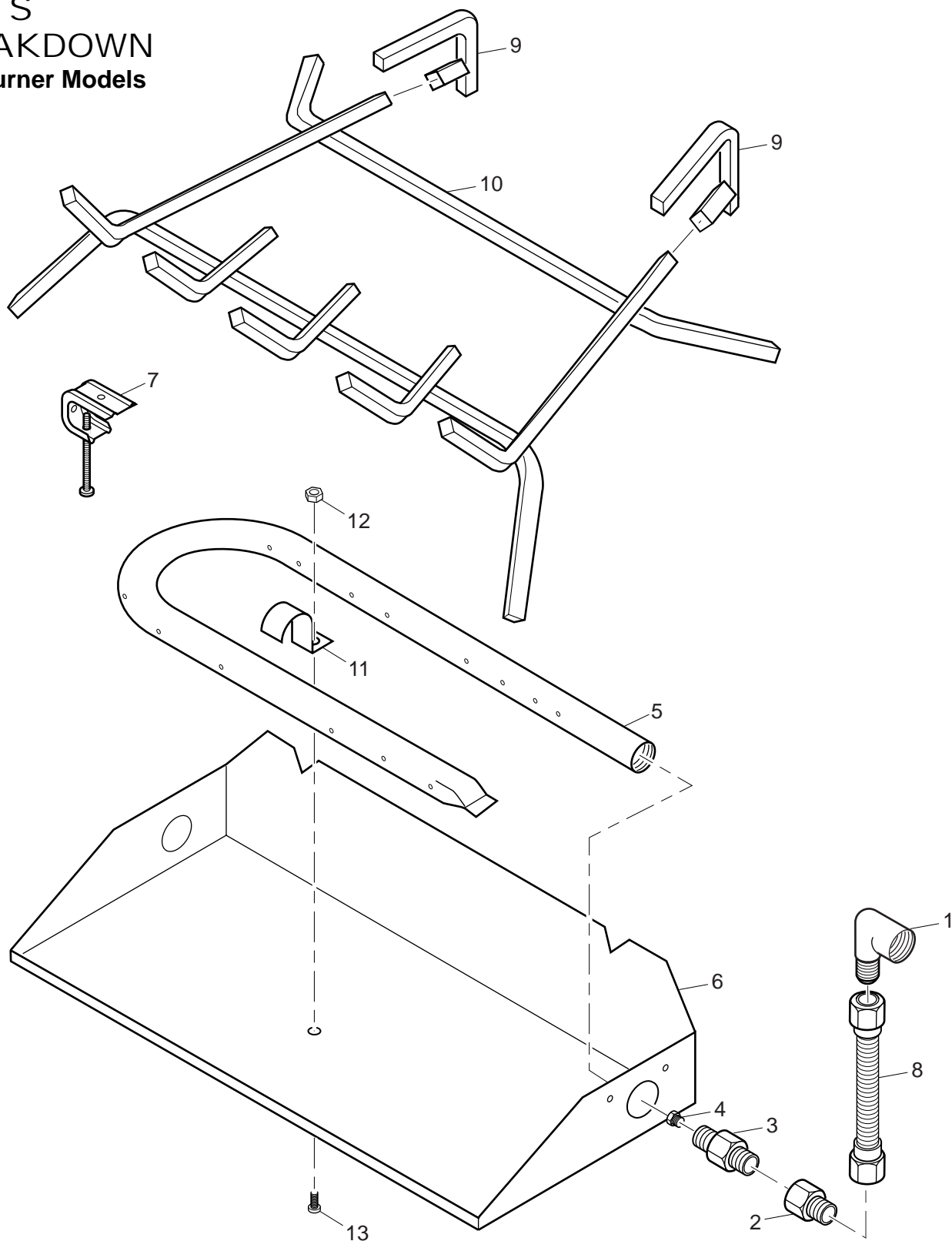
Single Burner Models

KEY NO.	PART NUMBER FOR		DESCRIPTION	QTY.
	18" Single	24" Single		
1	901058-01	901058-01	Brass 3/8 FLR x 1/2 FPT Adapter	1
2	901059-01	901059-01	Brass 3/8 FLR x 3/8 FPT Adapter	1
3	901066-01	901066-01	Brass Air Mixer - Natural Gas	1
4	901064-02	901064-03	Natural Gas Injector	1
5	901208-01	901208-02	Burner Manifold	1
6	901136-01	901136-02	Burner Pan - 1/2" Grate	1
	901137-01	901137-02	Burner Pan - 5/8" Grate	1
7	901242-01	901242-01	Damper Clamp - Std. Assembly	1
8	101628-01	101628-01	Gas Line - 10" Flex	1
9	901431-01	901431-01	Grate Steps (Some Models)	2
10	901243-01	901243-02	Log Grate - 1/2" Grate	1
	901246-01	901246-02	Log Grate - 5/8" Grate	1
PARTS AVAILABLE — NOT SHOWN				
	901156-01	901156-01	.125# Bag Embers	1
	901155-01	901155-01	1.5# Bag Ash Bed Material (Vermiculite)	1
	901036-01	901036-01	Aluminum Rating Plate-Generic	1
	901265-01	901265-01	Instruction Manual - V/G RGA 2-72	1

Note: Refer to Log Installation sheet for specific log replacement part numbers

VENTED NATURAL GAS LOGS

ILLUSTRATED PARTS BREAKDOWN Dual Burner Models



OWNER'S MANUAL

PARTS LIST

This list contains replaceable parts used in your log set. When ordering parts, follow the instructions listed under *Replacement Parts* on page 14 of this manual.

Dual Burner Models

KEY NO.	PART NUMBER FOR			DESCRIPTION	QTY.
	18" Dual	24" Dual	30" Dual		
1	901058-01	901058-01	901058-01	Brass 3/8 FLR x 1/2 FPT Adapter	1
2	901059-01	901059-01	901059-01	Brass 3/8 FLR x 3/8 FPT Adapter	1
3	901066-01	901066-01	901066-01	Brass Air Mixer - Natural Gas	1
4	901064-02	901064-03	901064-04	Natural Gas Injector	1
5	901209-01	901209-02	901209-03	Burner Manifold	1
6	901137-01	901137-02	901137-03	Burner Pan	1
7	901242-01	901242-01	901242-01	Damper Clamp - Std. Assembly	1
8	101628-01	101628-01	101628-01	Gas Line - 10" Flex	1
9	901430-01	901430-01	901431-01	Grate Steps (Some Models)	2
10	901246-01	901246-02	901246-03	Log Grate	1
11	901681-01	901681-01	901681-01	Burner Strap	1
12	901078-01	901078-01	901078-01	Nut #8/32	1
13	901076-01	901076-01	901076-01	Screw #8/32 x 3/8	1
PARTS AVAILABLE — NOT SHOWN					
	901156-01	901156-01	901156-01	.125# Bag Embers	1
	901155-01	901155-01	901155-01	1.5# Bag Ash Bed Material (Vermiculite)	1
	901036-01	901036-01	901036-01	Aluminum Rating Plate-Generic	1
	901265-01	901265-01	901265-01	Instruction Manual - V/G RGA 2-72	1

Note: Refer to Log Installation sheet for specific log replacement part numbers

VENTED NATURAL GAS LOGS

CLEANING AND MAINTENANCE

- Keep the area around the log set clean and clear of debris.
- Occasionally, you may use a soft bristle brush to clean logs.
- Once every year a qualified agency or certified chimney sweep should examine and clean the venting system of the fireplace.

REPLACEMENT PARTS

Note: Use only original replacement parts. This will protect your warranty coverage for parts replaced under warranty.

PARTS UNDER WARRANTY

Contact authorized dealers of this product or Parts Central (see page 15). If they can't supply original replacement part(s), call DESA International's Technical Service Department at 1-800-DESA LOG (1-800-337-2564).

When calling DESA International, have ready

- your name
- your address
- model and serial numbers of your fireplace
- how fireplace was malfunctioning
- type of gas used (propane/LP or natural gas)
- purchase date

Usually, we will ask you to return the defective part to the factory.

PARTS NOT UNDER WARRANTY

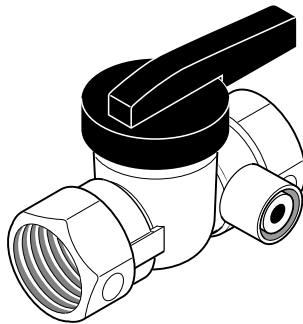
Contact authorized dealers of this product or Parts Central (see page 15). If they can't supply original replacement part(s), call DESA International's Parts Department at 1-800-972-7879 for referral information.

When calling DESA International, have ready

- model number of your fireplace
- the replacement part number

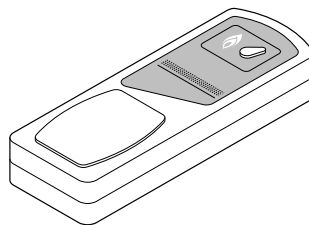
ACCESSORIES

Purchase these fireplace accessories from your local dealer. If they can not supply these accessories, call DESA International's Sales Department at 1-800-432-2382 for information. You can also write to the address listed on the back page of this manual.



EQUIPMENT SHUTOFF VALVE GA5010

For all models. Equipment shutoff valve with 1/8" NPT tap. Fits 1/2" NPT pipe.



RECEIVER AND HAND-HELD REMOTE CONTROL KIT - CGHRC Series

For all models. Allows the gas log set to be turned on and off by using a hand-held remote control. Valve/Pilot Kit GA9150 must be used with this remote.

ON/OFF SAFETY VALVE/ PILOT KIT - GA9050-1 (Not Shown)

For all models. Required for propane/LP installation.

REMOTE READY VALVE/ PILOT KIT - GA9150-1 (Not Shown)

For all models.

INDIVIDUAL ROUND LOG GA9450 (Not Shown)

For all models. Use when more logs are desired. Carton of 6

INDIVIDUAL SPLIT LOG GA9550 (Not Shown)

For all models. Carton of 6.

PINE CONES - GA9650 (Not Shown)

For all models. Use for additional decoration only. Carton of 6 Boxes (3 pine cones per box).

ASH BED MATERIAL (Vermiculite) - GA9750 (Not Shown)

For all models. Carton of 6.

GLOWING EMBERS - GA9950 (Not Shown)

For all models. Use for firebox decoration only.

SILICA SAND - GA9850 (Not Shown)

For all models. Use for firebox decoration only. Carton of 6.

LAVA ROCK - GA6067 (Not Shown)

For all models. Use for firebox decoration only.