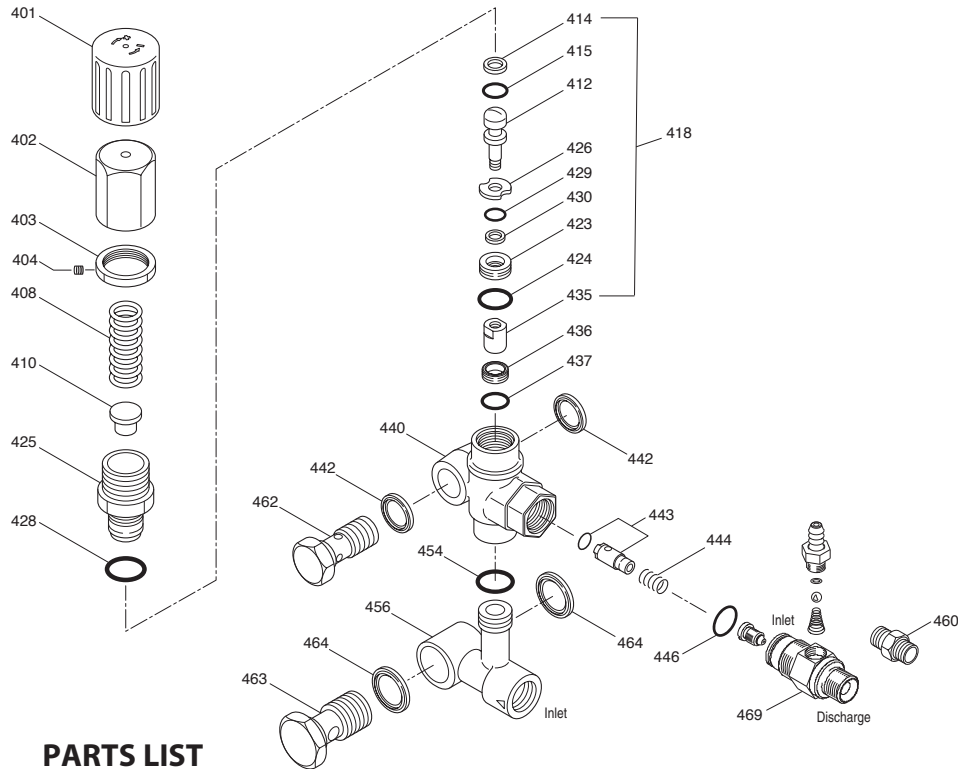


7860 UNLOADER WITH INJECTOR

| Specifications | U.S. Measure | Metric Measure |
|-----------------------|---------------------|---------------------|
| Flow..... | 3.0-5.0 gpm | (7.6-19 lpm) |
| PSI Range..... | 700-4000 psi | (50-275 bar) |
| Inlet Port, Side..... | 1/2" NPTF | (1/2" NPTF) |
| Discharge Port..... | M20 x 1 | (M20 x 1) |
| Weight..... | 35.2 oz. | (1.0 kg) |
| Dimensions..... | 4.65 x 1.70 x 6.75" | (118 x 43 x 171 mm) |

7367 FIXED CHEMICAL INJECTOR

| Specifications | U.S. Measure | Metric Measure |
|----------------------|-------------------|-------------------|
| Flow..... | 3.0-5.0 gpm | (11.4-19 lpm) |
| Nozzle Orifice..... | 2.1 mm | (2.1 mm) |
| Hose Barb - Ext..... | 1/4" | (1/4") |
| Tapped Barb..... | 8/32" UNF | (8/32" UNF) |
| Inlet Port..... | M20 x 1 | (M20 x 1) |
| Discharge Port..... | 3/8" NPTM | (3/8" NPTM) |
| Weight..... | 5.3 oz. | (0.15 kg) |
| Dimensions..... | 2.0 x 1.0 x 1.75" | (52 x 25 x 45 mm) |



PARTS LIST

| ITEM | P/N | MATL | DESCRIPTION | QTY. |
|------|--------|--------|--|------|
| 401 | 49100 | NY | Handle, Adjusting (Black) | 1 |
| 402 | 49099 | BB | Cap, Adjusting | 1 |
| 403 | 125521 | BB | Nut, Locking (M25X1) | 1 |
| 404 | 88953 | S | Screw, Set | 1 |
| 408 | 45198 | ZP R | Spring | 1 |
| 410 | 49101 | STZP R | Retainer, Spring | 1 |
| 412 | 49103 | S | Stem, Piston | 1 |
| 418 | 811529 | BB | Assy, Piston (Incls: 412,414,415,423,424,426,429,430,435) | 1 |
| 414 | 129638 | PTFE | Back-up-Ring, Piston Stem | 1 |
| 415 | 49104 | NBR | O-Ring, Piston Stem - 90D | 1 |
| 423 | 49105 | BB | Retainer, Valve | 1 |
| 424 | 49106 | NBR | O-Ring, Valve Retainer - 70D | 1 |
| 425 | 49102 | BB | Retainer, Piston | 1 |
| 426 | 49107 | S | Washer | 1 |
| 428 | 26133 | NBR | O-Ring, Retainer - 80D | 1 |
| 429 | 22056 | NBR | O-Ring, Valve Retainer - 70D | 1 |
| 430 | 49123 | D | Back-up-Ring, Valve Retainer | 1 |
| 435 | 49383 | S | Valve/Ball Assembly | 1 |
| 436 | 49384 | S | Seat | 1 |
| 437 | 13965 | NBR | O-Ring, Seat - 70D | 1 |
| 440 | — | BB | Valve Body | 1 |
| 442 | 49121 | STL | Washer, Seal (3/8") | 2 |
| 443 | 49245 | BB | Valve, Check w/NBR O-Ring | 1 |
| 444 | 117275 | S | Spring, Check Valve | 1 |
| 446 | 26133 | NBR | O-Ring, Body - 80D | 1 |
| 454 | 11346 | NBR | O-Ring, Manifold - 70D | 1 |
| 456 | — | BB | Manifold | 1 |
| 460 | 126974 | BB | Fitting, Discharge (3/8" NPTM) | 1 |
| 462 | 49120 | BB | Screw, Flo-thru (3/8" NPTM) | 1 |
| 463 | 49117 | BB | Screw, Flo-thru (1/2" NPTM) | 1 |
| 464 | 49118 | STL | Washer, Seal (1/2") | 2 |
| 468 | 31708 | NBR | Kit, O-Ring, (Incls: 414,415,424,428,429,430,437,446,454) | 1 |
| | 31556 | NBR | Kit Repair, (Incls: 412,414,415,423-426,428-430,435-437) | 1 |
| 469 | 7367 | BB | Injector, Fixed | 1 |

Italics are optional items. R Components comply with RoHS Directive.

MATERIAL CODES (Not Part of Part Number): BB=Brass D=Acetal
NBR=Medium Nitrile (Buna-N) NY=Nylon PTFE=Pure Polytetrafluoroethylene
S=304SS STL=Steel STZP=Steel/Zinc Plated ZP=Zinc Plated

CHEMICAL INJECTOR PERFORMANCE CHART

| Desired Pump Flow | Orifice Size | Maximum Injecting Pressure | Maximum Chemical Draw | Pressure Drop Across Injector at System Pressure (4000 PSI) |
|-------------------|--------------|----------------------------|-----------------------|---|
| 3.0 | 2.1 mm | 190 psi | 70.0 oz/min | 136 psi |
| 3.5 | 2.1 mm | 260 psi | 74.2 oz/min | 245 psi |
| 4.0 | 2.1 mm | 358 psi | 76.8 oz/min | 288 psi |

Optimum performance of chemical injector occurs with a 35 ft. high pressure hose and a minimum 3/8 I.D. The type of hose, extended lengths, reduced I.D. and fittings may create back pressure in excess of the low pressure nozzle rating and prevent the injector from drawing chemical. **Deduct hose friction loss from the above PSI nozzle. Consult CAT PUMPS for assistance with other options.**

CAUTION: Deduct the pressure drop shown in the performance chart from your desired system pressure to arrive at the maximum high pressure nozzle rating. This is essential to avoid over-pressurizing the pump.