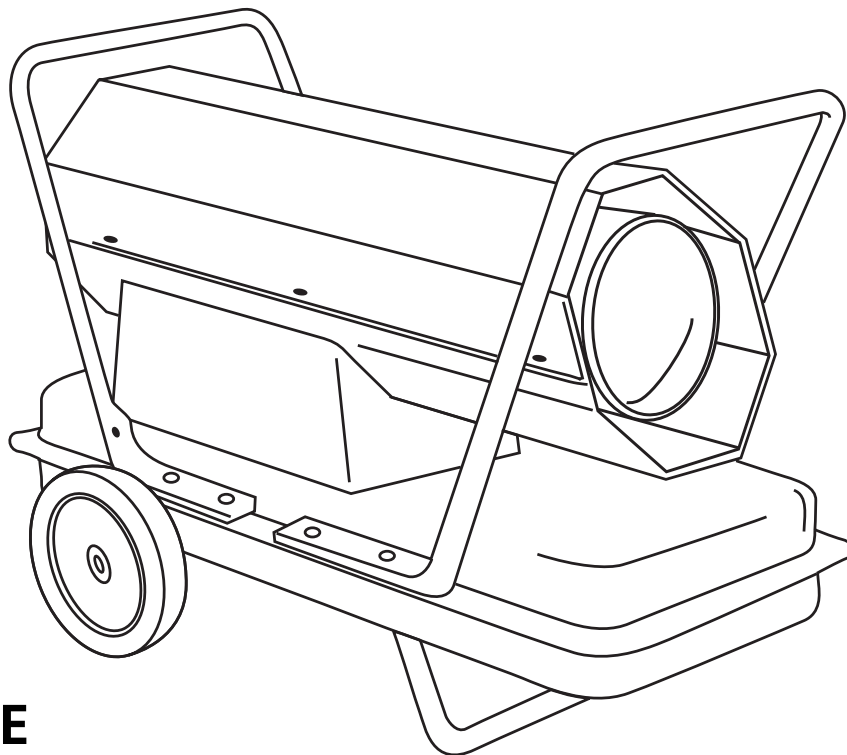


OPERATING INSTRUCTIONS AND OWNER'S MANUAL

READ INSTRUCTIONS CAREFULLY: Read and follow all instructions. Place instructions in a safe place for future reference. Do not allow anyone who has not read these instructions to assemble, light, adjust or operate the heater.

BuddyPROAIR™

MODEL

TS75KT, TS125KT,
TS175KT, TS210KT

KEROSENE FORCED-AIR HEATER

⚠ WARNING: If the information in this manual is not followed exactly, a fire or explosion may result causing property damage, personal injury or loss of life.

- Do not store or use gasoline or other flammable vapors and liquids in the vicinity of this or any other appliance.
- Service must be performed by a qualified service agency.

This is an unvented portable heater. It uses air (oxygen) from the area in which it is used. Adequate combustion and ventilation air must be provided. Refer to page 3.

Replacement parts are available from:
Allparts Equipment & Accessories, Inc.
1-877-475-5660
www.allpartsinc.com



UL-733, & CSA/CAN3-B140.9.3

⚠ WARNING: YOUR SAFETY IS IMPORTANT TO YOU AND TO OTHERS, SO PLEASE READ THESE INSTRUCTIONS BEFORE YOU OPERATE THIS HEATER.

GENERAL HAZARD WARNING:

- ⚠ FAILURE TO COMPLY WITH THE PRECAUTIONS AND INSTRUCTIONS PROVIDED WITH THIS HEATER, CAN RESULT IN DEATH, SERIOUS BODILY INJURY AND PROPERTY LOSS OR DAMAGE FROM HAZARDS OF FIRE, EXPLOSION, BURN, ASPHYXIATION, CARBON MONOXIDE POISONING, AND/OR ELECTRICAL SHOCK.
- ⚠ ONLY PERSONS WHO CAN UNDERSTAND AND FOLLOW THE INSTRUCTIONS SHOULD USE OR SERVICE THIS HEATER.
- ⚠ IF YOU NEED ASSISTANCE OR HEATER INFORMATION SUCH AS AN INSTRUCTIONS MANUAL, LABELS, ETC. CONTACT THE MANUFACTURER.

⚠ WARNING: NOT FOR HOME OR RECREATIONAL VEHICLE USE

⚠ WARNING: FIRE, BURN, INHALATION, AND EXPLOSION HAZARD. KEEP SOLID COMBUSTIBLES, SUCH AS BUILDING MATERIALS, PAPER OR CARDBOARD, A SAFE DISTANCE AWAY FROM THE HEATER AS RECOMMENDED BY THE INSTRUCTIONS NEVER USE THE HEATER IN SPACES WHICH DO OR MAY CONTAIN VOLATILE OR AIRBORNE COMBUSTIBLES, OR PRODUCTS SUCH AS GASOLINE, SOLVENTS, PAINT THINNER, DUST PARTICLES OR UNKNOWN CHEMICALS.

The State of California requires the following warning:

⚠ WARNING: COMBUSTION BY-PRODUCTS PRODUCED WHEN USING THIS PRODUCT CONTAIN CARBON MONOXIDE, A CHEMICAL KNOWN TO THE STATE OF CALIFORNIA TO CAUSE CANCER AND BIRTH DEFECTS (OR OTHER REPRODUCTIVE HARM).

⚠ WARNING:

- DO NOT USE GASOLINE, NAPHTHA OR VOLATILE FUELS.
- STOP HEATER BEFORE ADDING FUELS.
- ALWAYS FILL OUTDOORS AWAY FROM OPEN FLAME
- DO NOT USE EXTERNAL FUEL SOURCE.
- DO NOT OPERATE HEATER WHERE FLAMMABLE LIQUIDS OR VAPORS MAY BE PRESENT.
- DO NOT START HEATER WHEN CHAMBER IS HOT
- DO NOT START HEATER WHEN EXCESS FUEL HAS ACCUMULATED IN THE CHAMBER.
- DO NOT PLACE COOKING UTENSILS ON TOP OF THE HEATER.
- PLUG ELECTRICAL CORD INTO A PROPERLY GROUNDED THREE-PRONG RECEPTACLE.

CONTENTS





WARNINGS	3
HEATER SPECIFICATIONS	4
OPERATING PRECAUTIONS	4
SAFETY PRECAUTIONS	4
OPERATING INSTRUCTIONS	4
MAINTENANCE, STORAGE AND SERVICE	6
TROUBLE SHOOTING	7
WIRING DIAGRAM	8
PARTS LIST	8
EXPLODED VIEW	9
WARRANTY	10
INSTRUCTIONS FOR ORDERING PARTS	10

⚠ TS75KT WARNING:

Not suitable for use on wood floors or other combustible materials. When used the heater should rest on a suitable insulating material at least 1 inch thick and extending 3 feet or more beyond the heater in all directions.

SPECIFICATIONS

Type of Fuel: For use with Kerosene or #1 Fuel Oil ONLY on ALL models.

Model	TS75KT	TS125KT	TS175KT	TS210KT
Burn Rate:	75,000 Btu/hr (22 kW)	125,000 Btu/hr (37 kW)	175,000 Btu/hr (51 kW)	210,000 Btu/hr (61.5 kW)
Fuel Rate:	0.55 gal/hr (2.1 L/hr)	0.96 gal./hr (3.5 L/hr)	1.3 gal/hr (5.0 L/hr)	1.6 gal/hr (6.0 L/hr)
Electrical Input:	115V, 60Hz, 4a	115V, 60Hz, 5.5a	115V, 60Hz, 5.5a	115V, 60Hz, 5.5a
Line Protection:	10 amps	20 amps	20 amps	20 amps
Min. Operating Voltage:	110V	110V	110V	110V
Pressure Setting:	4.2 psig (29 kPa)	5.0 psig (34 kPa)	7.5 psig (51.7 kPa)	8.5 psig (58.6 kPa)
Max. Outlet Temperature:	1300°F (704°C)	1300°F (704°C)	1300°F (704°C)	1300°F (704°C)
Fuel Tank Capacity:	6 gallons (22.7 L)	14 gallons (53 L)	14 gallons (53 L)	14 gallons (53 L)
Ignition:	Direct Spark, Continuous	Direct Spark, Continuous	Direct Spark, Continuous	Direct Spark, Continuous
Spark Generator:	Igniter 13 kV, 10ma	Igniter 13 kV, 10ma	Igniter 13 kV, 10ma	Igniter 13 kV, 10ma
Primary Safety Control:	Solid State Control	Solid State Control	Solid State Control	Solid State Control
Certification:				

OPERATING PRECAUTIONS

This is a multi-fuel, direct-fired, forced air heater. It's intended use is primarily temporary heating of buildings under construction, alteration or repair.

1-K kerosene is the recommended fuel due to the refinement to eliminate contaminants. Other fuels such as #1 or #2 fuel oil, JP8, and #1 or #2 diesel can be used but, do not burn as clean as 1-K kerosene. Additional ventilation should be considered when using fuels other than 1-K kerosene.

Direct-Fired means that all of the combustion products enter the heated space. Even though this heater operates very close to 100 percent combustion efficiency, it still produces small amounts of carbon monoxide. Carbon monoxide (called CO) is toxic. CO can build up in a heated space and failure to provide adequate ventilation could result in death. The symptoms of inadequate ventilation are:

- headache
- dizziness
- burning eyes and nose
- nausea
- dry mouth or sore throat

Be sure to follow advice about ventilation in the Safety Precaution section.

Forced Air means that a blower or fan pushes the air through the heater. Proper combustion depends upon this air flow; therefore, the heater must not be revised, modified or operated with parts removed or missing. Likewise, safety systems must not be circumvented or modified in order to operate the heater.

When the heater is to be operated in the presence of other people the user is responsible for properly acquainting those present with the safety precautions and instructions, and of the hazards involved.

SAFETY PRECAUTIONS

1. Check the heater thoroughly for damage. DO NOT operate a damaged heater.
2. DO NOT modify the heater or operate a heater which has been modified from its original condition.
3. Use only Kerosene, JP8 Jet Fuel, #1/#2 Diesel, or #1/#2 Fuel Oil. **Never use gasoline, naphtha, paint thinner, alcohol or any other non-approved fuels of any kind.**
4. For indoor use only. Not for use where exposed to weather.
5. Use in well ventilated areas, provide at least 2 sq. ft. (0.19 sq. m.) of opening near the floor and 2 sq. ft. (0.19 sq. m.) near the ceiling directly to outdoors. Increase air openings as marked for each additional heater.

6. Always keep combustibles, like paper and wood, at least 8 ft. (2.4 m) from the heater outlet and 3 ft. (1.0 m) from the top, sides and inlet. Locate 10 ft. (3.0 m) from canvas or plastic coverings and secure them to prevent flapping movement.
7. Caution: Due to the high surface and exhaust temperatures, adults and children must observe clearances to avoid burns or clothing ignition. Do not touch. Keep children, clothing, and combustibles away.
8. Install the heater such that it is not directly exposed to water spray, rain and / or water.
9. Never use in areas normally for habitation and /or where children may be present.
10. Operate only on a stable, level surface. (TS75KT – See wood floor warning).
11. Do not use with duct work. Do not restrict inlet or exit.
12. Use only with electrical power specified. The electrical connection and grounding must comply with National Electrical Code – ANSI/NFPA 70 (USA) and CSA C22.1 Canadian Electrical Code, Part 1 (Canada).
13. Use only a properly grounded 3-prong receptacle or extension cord.
14. Do not move, handle, or service while hot or burning.
15. Use only in accordance with local, state (provincial) or National requirements, ordinances and codes.

OPERATING INSTRUCTIONS

UNPACKING

1. Remove heater from carton.
2. Remove all protective material which may have been applied to the heater for shipment.
3. Check the heater for possible shipping damage. If any damage is found immediately contact the manufacturer at 800-251-0001.

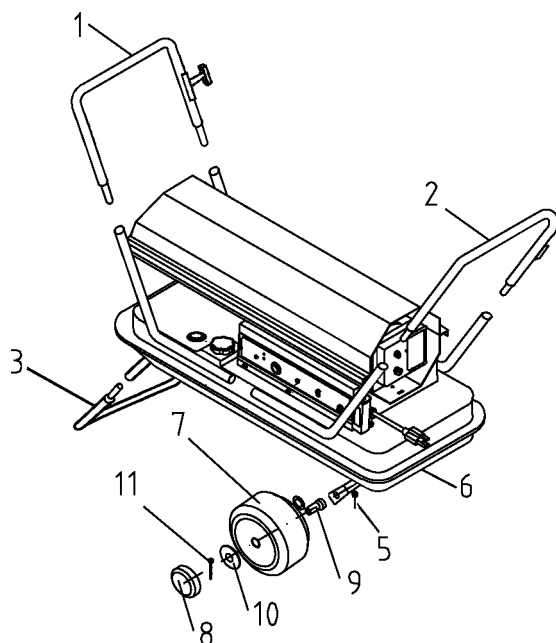
ASSEMBLY (For 125,000, 175,000 and 210,000 BTU/hr models only)

Wheels and two handle loops and one wheel support base are found in the shipping carton along with mounting hardware. The wheels, axle and mounting hardware are in a package. Tools required are a 5/16" nutdriver, 3/8" open or adjustable wrench and standard pliers.

1. Assemble the wheels onto the wheel support frame as follows:
 - a. Install one of the cotter pins into the hole on one end of axle.
 - b. Slide the large washer, then wheel onto the axle next to the cotter pin.

- c. Slide the spacer and small washer onto the axle next to the wheel.
 - d. Slide the partially assembled axle through the wheel support frame.
 - e. Slide the small washer and spacer onto the axle next to the wheel support.
 - f. Slide the wheel then large washer onto the axle and hold in place with the remaining cotter pin.
 - g. Install the caps over the larger washers to finish the wheel assembly.
2. To install handle bars 1 and 2 as shown below in the drawing, slide the handle loop tops (the two pieces with the cord wraps) into the handle bases. Make sure the cord wraps are on the opposite side of the control panel. Depress the spring-loaded locking buttons on each leg and slide onto base until locked in place.
 3. Follow Step 2 to attach the wheel support base (the one piece without a cord wrap).

Handle assembly for 125KT, 175KT& 210KT only.



ITEM	PART NO.	DESCRIPTION	QTY
1	26864	Handle, Front	1
2	26864	Handle, Rear	1
3	26864	Wheel Support Frame	1
4	26977	Machine Screw Blk (long)	8
5	26037	Kep Nut Blk	12
6	28761	Axle	1
7	22110	Wheel, 13" Dia.	2
8	28751	Cap	2
9	28762	Spacer	2
10	28749	Washer, Large	2
11	28750	Cotter Pin	2
12	28754	Ext. Cord Caddy (available separately)	2

PREPARING FOR OPERATION

1. Check the heater for possible shipping damage. If any is found, *immediately* contact the manufacturer at 800-251-0001.
2. Follow all of the "Precautions".
3. Fill the fuel tank with clean kerosene, JP8 Jet Fuel, #1/#2 Diesel, or #1/#2 Fuel Oil. In extremely cold weather, condensation may develop in the tank and it is recommended that a tablespoon of de-icer be added for each gallon (4 liters) of fuel in the tank. When filling the heater, use at least 2 gallons (8 liters) of fuel. Be sure heater is level and do not overfill. Use a funnel or can with a long fill spout.

IMPORTANT: Before filling fuel tank the first time or after extended storage periods, drain the fuel tank of any moisture or condensation.

4. Locate heater at a safe distance from combustible materials. Model TS75KT is not suitable for use on wood floors or other combustible materials. When used, the heater should rest on suitable insulating material at least 1 inch thick and extending 3 ft. or more beyond the heater in all directions.

START

1. Make sure the "ON/OFF" switch is "OFF". Plug heater into a grounded 115V, 60 Hz, 1 Ø outlet. Start heater by push toggle switch to "On" position (light signifies switch is in "ON" position). If room temperature is greater than 77° F you will need to increase thermostat setting to start heater. Adjust thermostat to desired setting. Heater will cycle on/off as heat is required.

For all models: In cold weather, starting may be improved by holding a finger over the vent hole of the pump adjustment screw cap until the heater starts. This unit is equipped with an interrupt circuit. The reset is located near the power cord. If the unit does not start, press the reset button.

STOP

1. Push "On/Off" switch to "Off" position. For extended shutdown, unplug heater from power source.

RESTART AFTER DIAGNOSTIC SAFETY SHUTDOWN

(See page 7)

1. Wait 5 minutes.
2. Press reset button.

MAINTENANCE AND STORAGE

WARNING. To prevent personal injury, unplug the heater from the wall outlet before servicing.

For maximum efficiency and trouble-free service, make the following periodic maintenance, cleaning and inspections.

DAILY SCHEDULE

1. **GENERAL.** Make general visual inspection of heater for loose or damaged parts. Check nuts and bolts to insure against looseness caused by vibration or rough handling. Damaged parts should be repaired or replaced before using heater again. Check heater operation to be sure it is operating normally (See "Servicing" section for description of normal operation).
2. **FILTERS.** Dirty air or fuel filters will cause an imbalance in the air-fuel mixture. The best indication that this condition exists is an increase in odors or difficulty getting your heater to ignite. This heater should never be operated without the filters in place. If required, clean filters as described under "500 Hours" and "Annual Schedules".

500 HOUR SCHEDULE

1. **AIR INTAKE FILTER.** Remove and wash the filter element with a mild detergent, dry thoroughly and replace. Do not oil the filter element. If your heater is used where there is considerable dust or dirt, clean as often as necessary (approximately every 50 hrs.).
2. **REMOVE DUST.** Clean heater twice a season (more often under dusty conditions). Remove accumulated dust from the transformer, burner, motor and fan blades with compressed air. Wipe area clean with a clean dry cloth. Inspect area to insure all foreign materials are removed, especially around the burner and combustion area.
3. **CAD CELL.** Clean the glass portion of the cad cell with a soft dry cloth.
4. **NOZZLE.** Accumulation of dirt from fuel and carbon from the compressor vanes will eventually fill up the passages in the nozzle, resulting in reduction of fuel and air flow. Pressure will gradually increase giving improper fuel-air mixture and excess odor and smoke. If this occurs, replace the fuel nozzle.
5. **FUEL TANK.** Clean twice a season (during frequently used periods, clean twice a month). Drain and flush the fuel tank with clean fuel oil.

ANNUAL SCHEDULE

1. **AIR OUTPUT FILTER.** Remove the air output filter and tap the contaminated side gently on a solid object to remove contaminants. Compressed air or liquids should not be used to clean this filter. Reinstall cleaned filter in filter body in the same position as it was when removed. If the filter appears extremely dirty, replace it with a new filter of the same type. When replacing the filter cover, be sure the gasket is firmly in place and the screws in the filter cover are tight to prevent air leaks.
2. **FUEL FILTER.** Remove the fuel filter from fuel line and direct compressed air through the filter in the opposite direction of fuel flow. Safety glasses should be worn when using compressed air.

3. **AIR AND FUEL LINES.** If the air or fuel lines are removed during cleaning, be sure all connections are tight before operating unit.
4. **AIR PRESSURE SETTING.** The air pressure has been properly set at the factory. If the air pressure is out of adjustment, it will most likely be caused by dirty air filters, a partially plugged nozzle, an air leak in the system or improperly set pressure. If adjustment becomes necessary, first determine the proper pressure setting for your heater which is printed on the serial label located on the fuel tank. With a full fuel tank, remove the plug (part #33 from the exploded-view drawing on page 9) from the air filter cover and attach a 0 - 15 PSI pressure gauge. Start the heater and note the pressure reading. If the pressure is low, slowly turn the pressure adjusting screw in (Clockwise) until the correct pressure is obtained. If the air pressure is high, turn the adjusting screw out (counterclockwise) until the pressure is correct. When correct pressure is reached, unplug the heater, remove the gauge and replace the plug.

STORAGE

Store the heater in a dry location free from fumes or dust.

At the end of each heating season, clean the heater as described in the MAINTENANCE section. Drain and flush the fuel tank with clean fuel. The manufacturer recommends completely filling the tank with fuel for extended storage to minimize condensation inside the tank.

SERVICING

A hazardous condition may result if a heater is used that has been modified or is not functioning properly.

When the heater is working properly:

- * The flame is contained within the heater.
- * The flame is essentially yellow.
- * There is no strong disagreeable odor, eye burning or other physical discomfort.
- * There is no smoke or soot internal or external to the heater.
- * There are no unplanned or unexplained shut downs of the heater.

DIAGNOSTIC SAFETY SHUTDOWN AND TROUBLE SHOOTING:

These instructions are applicable for TS75KT, TS125KT, TS175KT, TS210KT.

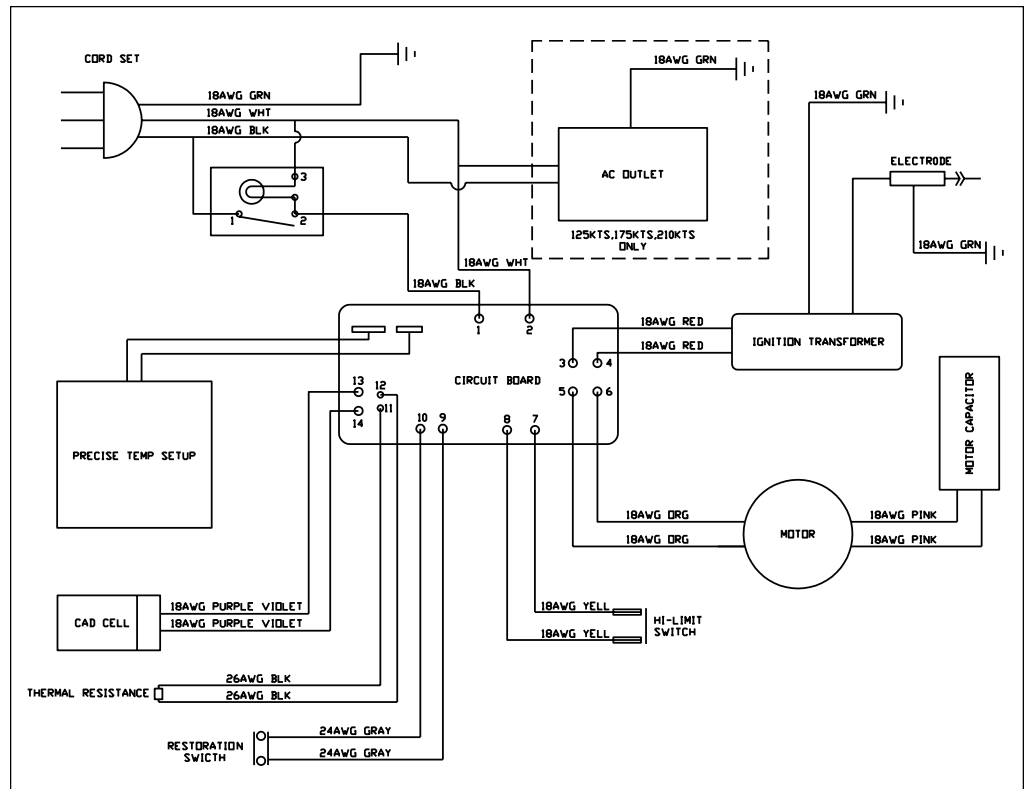
This heater is equipped with a diagnostic control board and flashing LED error indicator. This flashing LED signals when there is a malfunction of a monitored component. See the following diagnostic Guide for error messages and a brief description of the error. Follow the step-by-step trouble shooting guide to correct the cause of the error message.

LED	CAUSE	TROUBLE SHOOTING
E1	No Flame	<ol style="list-style-type: none">1) Check wiring to Cad Cell (per wiring schematic in manual). Test heater.2) Clean Cad Cell photo cell.<ol style="list-style-type: none">a) Slide Cad Cell out of Cad Cell holder.b) Push the photo cell out of the white rubber Cad Cell housing by pushing on the blue and white wires.c) Clean the photo cell with a soft cloth and rubbing alcohol.d) Pull the photo cell back into the Cad Cell housing and reinstall into holder.e) Test heater.3) If the heater still does not operate, replace Cad Cell. Test heater.4) Replace oil flame control assembly. Test heater.
E2	Room Thermometer Failure	<ol style="list-style-type: none">1) Digital Thermometer Failure - Replace Thermometer
E3	Thermostat Up Key Failure	<ol style="list-style-type: none">1) Thermostat setting will not increase - check thermostat.2) Disconnect and reconnect the pick-up connector on control board (small white plug connector).3) Still not functioning, replace thermostat.
E4	Thermostat Down Key Failure	<ol style="list-style-type: none">1) Thermostat setting will not decrease - check thermostat.2) Disconnect and reconnect the pick-up connector on control board (small white plug connector).3) Still not functioning, replace thermostat.
E5	Over-heat	<ol style="list-style-type: none">1) High Limit Switch activation2) Allow heater to cool off.3) Restart heater.
E6	Reset button Error	<ol style="list-style-type: none">1) Check wiring to reset button.2) Replace reset button.3) Replace oil flame control assembly.

WIRING DIAGRAM

The parts lists and wiring diagram show the heater as it was constructed. Do not use a heater which is different from that shown. Heater performance is affected by air pressure setting. If there is any uncertainty about the air pressure setting, have it checked.

A heater which is *not* working right must be repaired, but *only* by a trained, experienced service person.



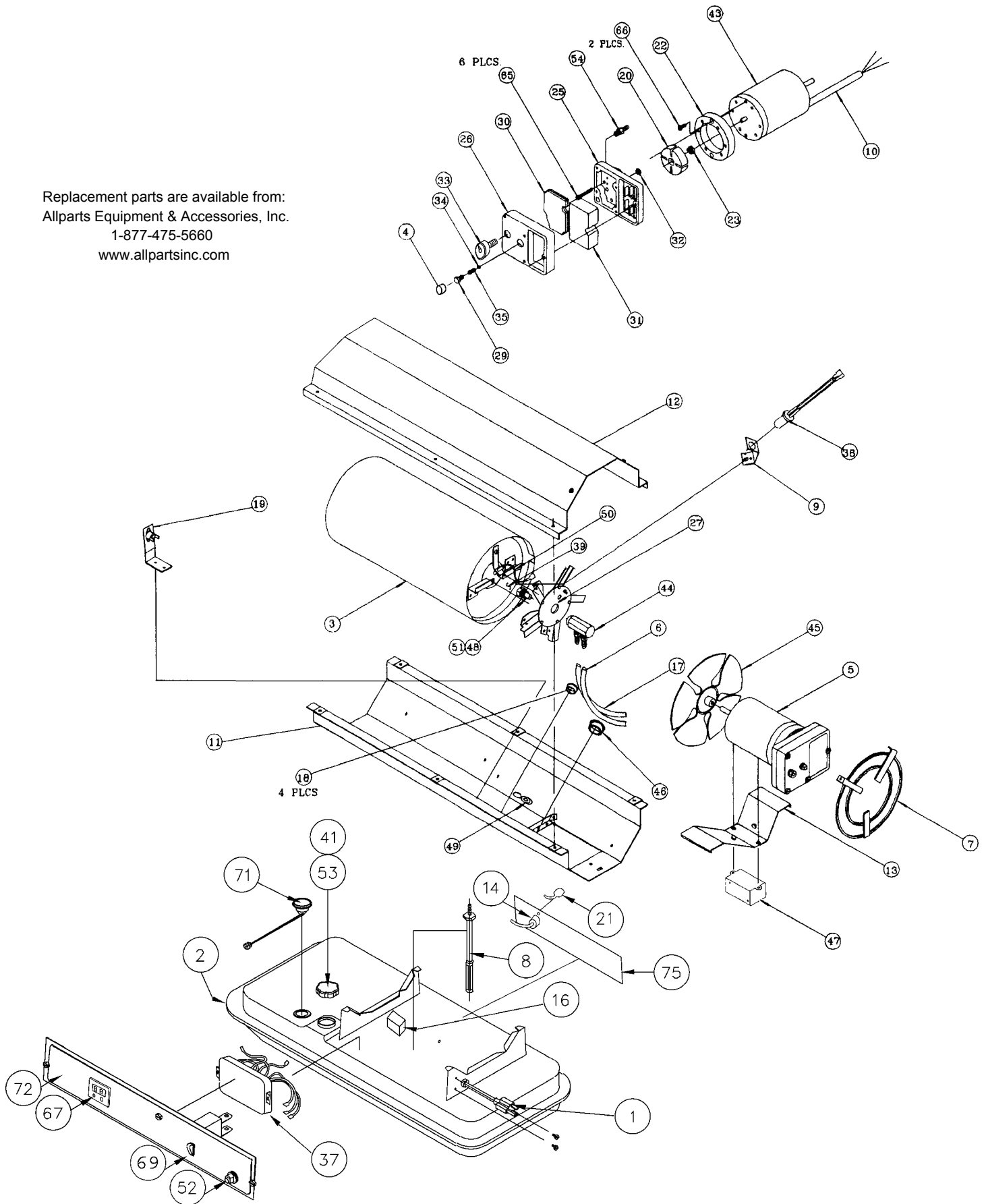
Replacement parts are available from:
Allparts Equipment & Accessories, Inc.
1-877-475-5660
www.allpartsinc.com

PARTS LIST

Ref.#	Item #	Item #	Item #	Item #	Description	Ref.#	Item #	Item #	Item #	Description
	75KT	125KT	175KT	210KT			75KT	125KT	175KT	210KT
1	21036	21036	21036	21036	Power Cord	34	26850	26850	26850	26850
2	22213	22214	22214	22214	Fuel Tank Assembly	35	26851	26851	26851	26851
3	22215	22216	21783	22099	RadiationShield Ass'y	37	22222	22222	22222	22222
4	26904	26904	26904	26904	Pump Adj. Screw Cap	38	26903	26903	26903	26903
5	22258	22259	22259	22259	Power Pac Ass'y	39	22232	22233	22234	22107
6	24343	24346	24346	24346	Fuel Tube	41	26909	26909	26909	26909
7	28734	21771	21768	21771	Grille Assembly	43	28737	28738	28738	28738
8	28779	28780	28780	28780	Fuel Filter Ass'y	44	27790	28739	28739	28739
9	24011	24011	24011	24011	Cad Cell Bracket	45	28740	26885	26866	22108
10	23449	23449	23449	23449	Motor Cord Sleeve	46	—	26227	26227	26227
11	26893	26894	26896	26897	Bottom Shell	47	22142	22142	22142	22142
12	26889	26890	26892	26892	Top Shell	48	28741	28742	28743	22109
13	24332	24333	24334	24333	Motor Mounting Brkt	49	26223	26223	26223	26223
14	26898	26898	26898	26898	Receptacle, 110V	50	22144	22144	22144	22144
16	28788	28735	28735	28735	Start Capacitor	51	27429	27429	27429	27429
17	23725	24345	24345	24345	Air Tube	52	26910	26910	26910	26910
18	26225	26225	26225	26225	Snap Bushing	53	—	—	—	—
19	21794	26901	26902	22105	High Limit Control	54	26847	26847	26847	26847
20	26831	26831	26831	26831	Air Pump Rotor w/Vanes	*	27094	—	—	—
21	26899	26899	26899	26899	Receptacle Cover	*	27095	—	—	—
22	26833	26833	26833	26833	Air Pump Cylinder	*	28745	26862	26862	26862
23	26834	26834	26834	26834	Nylon Air Pump Insert	*	26070	26070	26070	26070
25	22106	22106	22106	22106	Outlet Housing	*	24171	—	—	—
26	23255	23255	23255	23255	Inlet Housing	67	22112	22112	22112	22112
27	—	22257	22257	22257	Burner Head Ass'y	69	28785	28785	28785	28785
29	23265	23265	23265	23265	Adjusting Screw	71	28791	28778	28778	28778
30	23270	23270	23270	23270	Outlet Filter	72	22128	22114	22114	22114
31	20234	20234	20234	20234	Inlet Filter	*	28682	28683	28683	28683
33	28786	28786	28786	28786	Pressure Gauge	75	26887	26888	26888	26888

* Not shown in drawing

Replacement parts are available from:
Allparts Equipment & Accessories, Inc.
1-877-475-5660
www.allpartsinc.com



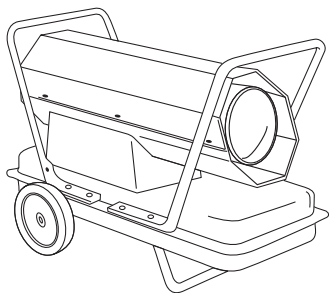
OPERATING INSTRUCTIONS AND OWNER'S MANUAL

READ INSTRUCTIONS CAREFULLY: Read and follow all instructions. Place instructions in a safe place for future reference. Do not allow anyone who has not read these instructions to assemble, light, adjust or operate the heater.

BuddyPRO[™]AIR

MODEL

TS75KT, TS125KT,
TS175KT, TS210KT



⚠ WARNING: USE ONLY MANUFACTURER'S REPLACEMENT PARTS FROM THE FACTORY OR YOUR LOCAL TRACTOR SUPPLY COMPANY (TSC) STORE.

PARTS ORDERING INFORMATION:

PURCHASING: Accessories may be purchased at any Mr. Heater/HeatStar local dealer or direct from the factory

FOR INFORMATION REGARDING SERVICE

Please call Toll-Free 800-251-0001 • www.mrheater.com

Our office hours are 8:30 AM – 5:00 PM, EST, Monday through Friday.

Email to: techservice@mrheater.com

Please include the model number, date of purchase, and description of problem in all communication.

LIMITED WARRANTY

The company warrants this product to be free from imperfections in material or workmanship, under normal and proper use in accordance with instructions of The Company, for a period of one year from the date of delivery to the buyer. The Company, at its option, will repair or replace products returned by the buyer to the factory, transportation prepaid within said one year period and found by the Company to have imperfections in material or workmanship.

If a part is damaged or missing, call our Technical Support Department at 800-251-0001.

Address any Warranty Claims to the Service Department, Enerco Group, Inc., 4560 W. 160TH ST., Cleveland, Ohio 44135. Include your name, address and telephone number and include details concerning the claim. Also, supply us with the purchase date and the name and address of the dealer from whom you purchased our product.

The foregoing is the full extent of the responsibility of the Company. There are no other warranties, express or implied. Specifically there is no warranty of fitness for a particular purpose and there is no warranty of merchantability. In no event shall the Company be liable for delay caused by imperfections, for consequential damages, or for any charges of the expense of any nature incurred without its written consent. The cost of repair or replacement shall be the exclusive remedy for any breach of warranty. There is no warranty against infringement of the like and no implied warranty arising from course of dealing or usage of trade. This warranty will not apply to any product which has been repaired or altered outside of the factory in any respect which in our judgment affects its condition or operation.

Some states do not allow the exclusion or limitation of incidental or consequential damages, so the above limitation or exclusion may not apply to you. This Warranty gives you specific legal rights, and you may have other rights which vary from state to state.

Enerco Group, Inc. reserves the right to make changes at any time, without notice or obligation, in colors, specifications, accessories, materials and models.



UL-733, & CSA/CAN3-B140.9.3

ENERCO GROUP, INC. 4560 W. 160TH ST., CLEVELAND, OHIO 44135 • 216-916-3000
BuddyPRO is a registered trademark of Enerco Group, Inc.
© 2005, Enerco Group Inc. All rights reserved