

# SPG7085E

*Parts Breakdown - Rev 1*



*FOR QUESTIONS AND CONCERNS, CONTACT US AT*

**A**llparts Equipment &  
Accessories Inc.

[www.allpartsinc.com](http://www.allpartsinc.com)

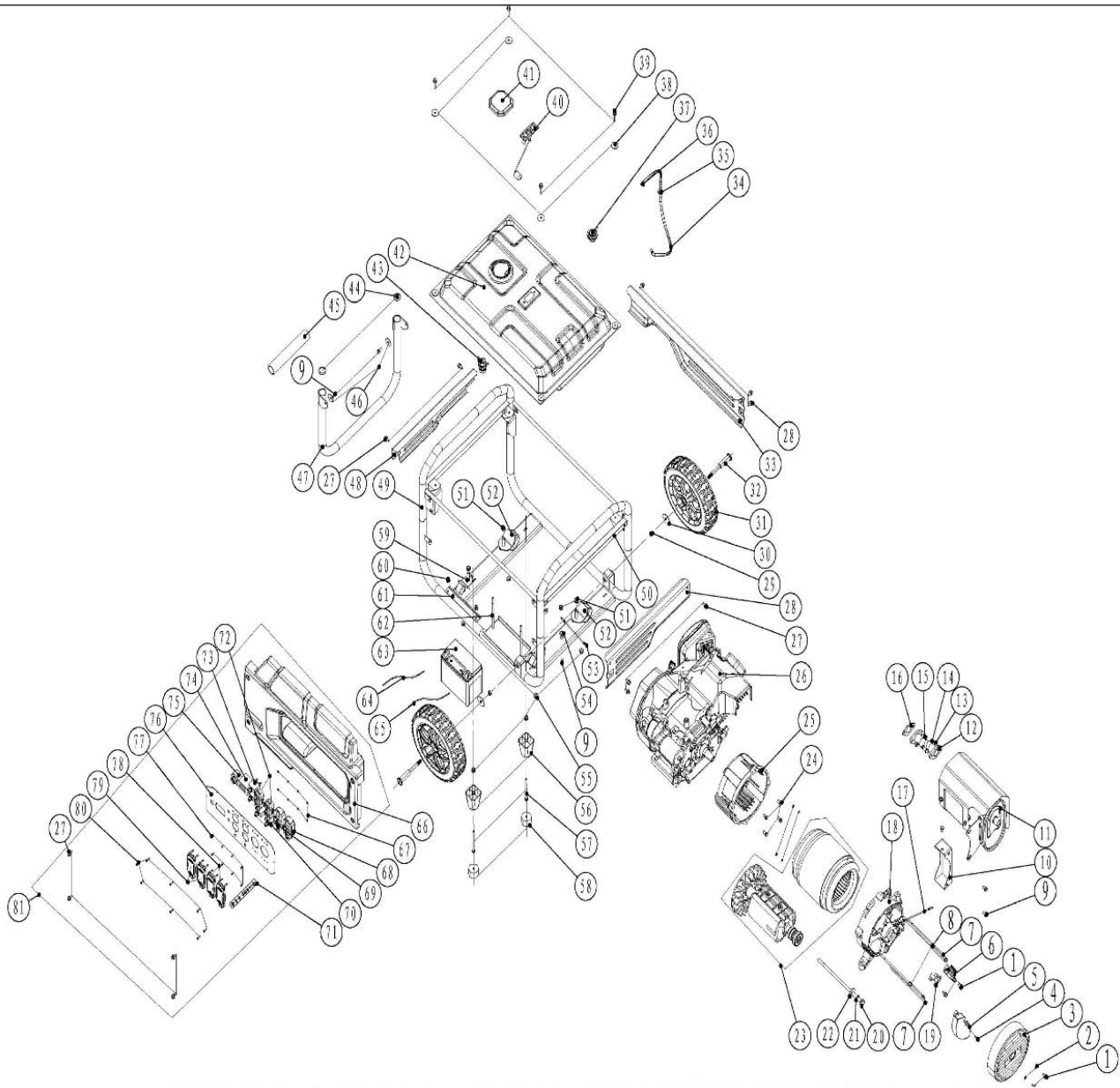
Call Us: 1-269-685-4123

Text Us: 1-269-447-0412

## A detailed view of a Simpson SPG7085E portable generator. The unit is primarily black with a silver metal frame. A red Honda GX160 engine is visible on the left side. The front panel features a digital display showing '8888', a voltage meter, and four large black outlets labeled 'NEUTRAL', 'GROUND', 'WAVE', and 'WAVE'. The text 'POWERED by HONDA' and '7000 RUNNING WATTS 8500 SURGE WATTS' are printed on the top. The model number 'SPG7085E' and 'ELECTRIC START' are also visible. A large black wheel is on the right side, and a battery is mounted at the bottom.

	NAME	DATE	<div>FNA-GROUP</div> <div>1265 INDUSTRIAL STREET, DECATUR, AR 72722</div>		
DRAWN	-	-	TITLE:		
CHECKED	-	-			
ENG APPR.	-	-			
MFG APPR.	-	-			
Q.A. APPR.	-	-			
SERVICE APPR.	-	-			
<div>PROPRIETARY AND CONFIDENTIAL</div> <div>THE INFORMATION CONTAINED IN THIS DRAWING IS THE SOLE PROPERTY OF FNA-GROUP. ANY REPRODUCTION IN PART OR AS A WHOLE WITHOUT THE WRITTEN PERMISSION OF FNA-GROUP IS PROHIBITED.</div>					
SIZE		DWG. NO.		REV.	
A		SRGE8500DA		NR1	
SCALE: N/A		WEIGHT:		SHEET 1 OF 2	
SPG7085E		IPL			

Version:



### SRGE8500DA/ SPG7085E GASOLINE GENERATOR REPLACEMENT PARTS LIST

NO.	FNA P/N	DESCRIPTION	QTY	NO.	FNA P/N	DESCRIPTION	QTY	NO.	FNA P/N	DESCRIPTION	QTY
1	END COVER KIT 7110566	BOLT M5 X 12	7	29	WHEEL KIT	HEX NUT M10, NYLOCK	2	55	FOOT KIT 7110581	NUT M8	7
2		GASKET 10 X 0.8	2	30		WASHER FLAT $\phi$ 10	2	56		FOOT, SUPPORT	2
3	REGULATOR KIT 7110567	COVER, END	1	31		WHEEL	2	57		BOLT M8 X 90	2
4		BOLT M5 X 16	3	32		AXLE, WHEEL	2	58		FOOT, RUBBER	2
5		AVR MODULE	1	33	REAR PLATE KIT VAPOR HOSE KIT 7110574	PROOF PLATE, REAR	1	60		NUT M6	3
6		CABLE LIMITING BOARD	1	34		HOSE, FUEL VAPOR 4.5MM ID X 8MM OD X560	1	61		BRACKET BATTERY	1
7		BOLT M5 X 224	2	35		HOSE, FUEL VAPOR	1	62		BOLT M6 X 30	2
8		BOLT M6 X 185	4	36		CLAMP, SPRING	2	63		BATTERY	1
9	MUFFLER ASSY 7110568	BOLT M8 X 16	3	37		VALVE, ROLLOVER	1	64		CABLE BATTERY POSITIVE	1
10		MUFFLER BRACKET	1	38		WASHER FUEL TANK 6X25X2	4	65		CABLE BATTERY NEGATIVE	1
11		MUFFLER	1	39		BOLT M6 X 25	4	66		PANEL REAR COVER	1
12	MUFFLER PIPE KIT 7110569	MUFFLER CONNECTING PIPE	1	40	7110575	GAUGE, FUEL	1	67		NUT M4	8
13		SPRING GASKET	4	41	7110576	CAP, FUEL	1	68	7110582	PLUG/TWIST LOCK 120V/240V	1
14		BOLT M8 X 30	2	42	7110578	FUEL TANK	1	69	7110583	PLUG/120V TWIST LOCK	1
15		NUT NYLOC M8	2	43		SHUT-OFF FUEL	1	70	7110584	THERMAL CIRCUIT BREAKER 20A	2
16		MUFFLER SPACER	1	44		BLOCK, HANDLE	2	71		GROUNDING BOLT AND NUT	1
17		ASSEMBLY, GROUND WIRE 80MM	1	45	HANDLE KIT 7110579	GRIP, HANDLE	1	72	7110585	PLUG/DUPLEX	4
18		SUPPORT, BEARING	1	46		SLEEVE, HANDLE	2	73	7110586	THERMAL CIRCUIT BREAKER 27A	2
19		MODULIF, BRUSH	1	47		HANDLE	1	74	7110587	HOUR METER	1
20		BOLT 5/16-24	1	9		BOLT M8 X 16	2	75	7110588	IGNITION SWITCH	1
21		WASHER, LOCK M10	1	48		PROOF PLATE, LEFT	1	76		PANEL BODY	1
22		WASHER FLAT 10X30X1	1	49		FRAME	1	77		TAP SCREW M3 X 8	8
23		ASSEMBLY, ROTOR/STATOR	1	50		CROSSING BAR, FRAME	1	78	7110589	RECEPTACLE COVER/DUPLEX	2
24		BOLT 3/8 16	4	51	VIBRATION MOUNT KIT 7110580	NUT M10	2	79	7110590	RECEPTACLE COVER/TWIST LOCK	2
25		COVER, FRONT	1	52		ISOLATOR LEFT	2	80		TAP SCREW M4	8
26	ENGINE ASSY 7110570	HONDA ENGINE	1	59		ISOLATOR RIGHT	2	81	7110591	CONTROL PANEL ASSY	1
27	RIGHT PLATE KIT 7110571	BOLT, M6 X 12	12	53		ASSEMBLY, GROUND WIRE 150MM	1				
28		PROOF PLATE, RIGHT	1	54		WASHER STAR M8	1				