

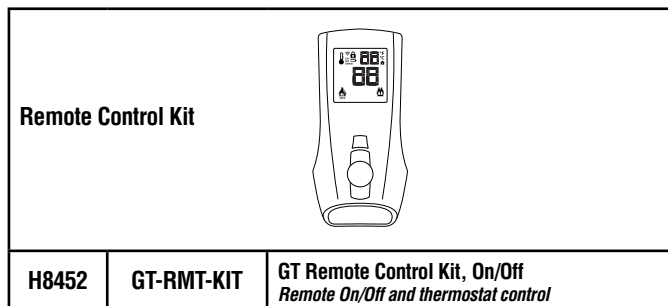
INSTALLATION INSTRUCTIONS FOR INSTALLING GT REMOTE CONTROL KIT FOR USE WITH RAVENNA™ IPI DIRECT VENT GAS FIREPLACE INSERTS

KIT CONTENTS:

- 1 ea. Remote Control (Transmitter)
- 1 ea. Wire Harness
- 2 ea. Screws, Phillips, #6 X 1/2"
- 1 ea. Receiver Kit
- 1 ea. Instruction Sheet

TOOLS/SUPPLIES NEEDED

- 3/8" Open End Wrench
- Phillips Screwdriver
- Utility Knife or Razor Blade
- 3 ea. "AAA" Batteries (1.5V) (for remote)



GENERAL INFORMATION

This remote control system provides remote on/off control of the burner and thermostatic control.

If you encounter any problems, need clarification of these instructions or are not qualified to properly install this kit, contact your local distributor or dealer.

Read this instruction sheet in its entirety before beginning the installation.

ALL WARNINGS, PRECAUTIONS AND INSTRUCTIONS IN THE INSTALLATION AND OPERATION MANUAL PROVIDED WITH THE APPLIANCE APPLY TO THESE INSTRUCTIONS.

Check the contents of the kits upon receipt and check for any damaged or missing parts. If there is hidden damage, notify your freight company or Innovative Hearth Products™, LLC (IHP) dealer immediately.

INSTALLER NOTICE: THESE INSTRUCTIONS MUST BE LEFT WITH THE APPLIANCE.

ATTENTION!

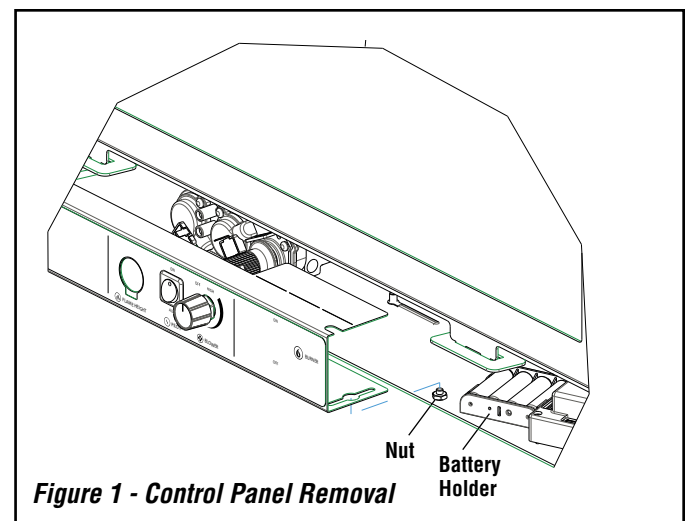
- **TURN "OFF" THE MAIN GAS SUPPLY OF THE APPLIANCE DURING INSTALLATION OR MAINTENANCE OF THE RECEIVER.**
- **PLACE THE RECEIVER'S 3 POSITION SLIDER SWITCH IN THE "OFF" POSITION DURING INSTALLATION OR MAINTENANCE.**
- **TURN "OFF" MAIN GAS SUPPLY TO THE APPLIANCE PRIOR TO REMOVING OR REINSERTING THE BATTERIES IN THE RECEIVER.**
- **DISCONNECT POWER SUPPLY AT THE CIRCUIT BREAKER.**

INSTALLATION INSTRUCTIONS

NOTE: It will aid in the ease of installation if you remove the control panel. The panel has keyhole slots where it mounts to the base. Loosen the two nuts securing the panel. Carefully move out the panel far enough to access the back. Do Not pull the panel out too far or it may pull apart some of the connections. See **Figure 1**.

Step 1. TURN OFF THE GAS SUPPLY TO THE APPLIANCE, and disconnect power supply at the circuit breaker. Ensure appliance is cold.

Step 2. Disconnect the burner on/off switch from the white and green wires on the main harness. Remove switch from control panel. If it is installed in the surround panel: Disconnect the extension wires to which it is attached then remove the switch. Next, disconnect the extension wires from the green and white wires on the on the main harness. The extension wires are no longer needed and can be removed from the appliance with the switch.



- Step 3.** Locate battery holder located to the right of the control panel (see **Figure 1**). Disconnect it from the main harness and remove from the appliance. **NOTE:** Battery back-up will be delivered through the remote receiver, so this will not be reused.
- Step 4.** Using a utility knife, carefully cut through the label using the cut in the control panel as a guide. See **Figure 2**.
- Step 5.** Push on the side of the cut out in the control panel to remove the knockout. Remove any sharp burrs where knockout was connected. See **Figure 2**.
- Step 6.** Insert the receiver into the hole on the control panel, oriented as shown. Fasten the receiver to the control panel using the #6 x 1/2" long flat head screws with the use of the phillips screwdriver. A screw will be installed on each side of the receiver.

- Step 7.** Install the 4 AA type batteries in the battery compartment with the correct polarity. See **Figures 2**.
- Step 8.** Place the slider into the small cover plate (as shown). Align the slider with the switch on the receiver and couple the switch into the slider. Using the two (2) pan head screws provided secure the cover plate to the receiver.
- Step 9.** Connect the wiring harness to the back of the receiver. Then connect the white and green wires to the main harness. Last locate the coaxial connection on the main harness, disconnect, and plug the receiver harness in-line. Refer to electrical schematic.
- Step 10.** Coil up excess wire on receiver harness and secure to appliance base with attached vinyl clamps. See **Figure 4**.
- Step 11.** Reinstall control panel, if necessary. Care should be taken to ensure all connections are complete and the wires are positioned so they will not come in contact with the hot surfaces of the firebox.

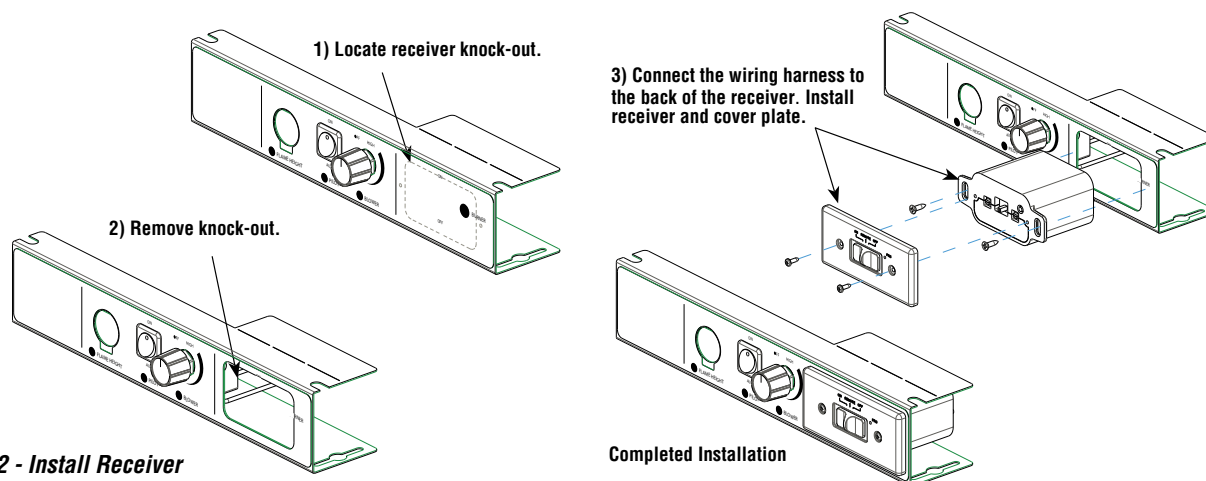


Figure 2 - Install Receiver

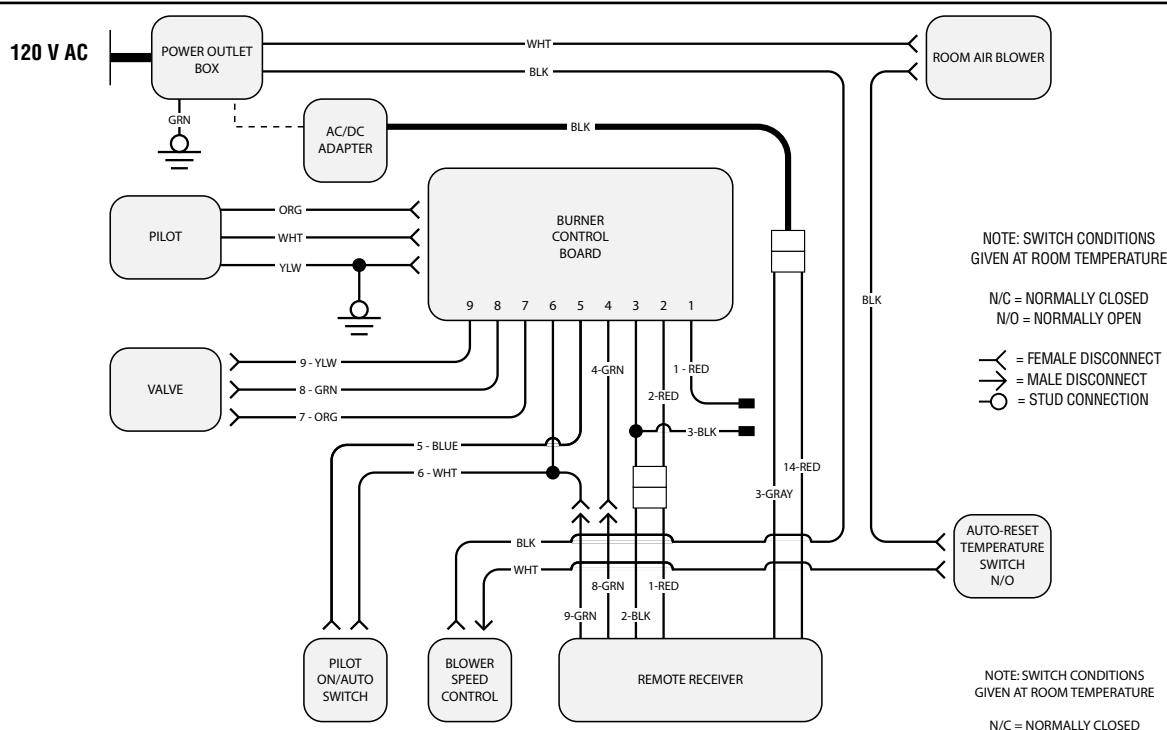


Figure 3 - Electronic Control Schematic - Models RDV33/40 IPI With GT Remote Kit Installed

CAUTION: Label all wires prior to disconnection when servicing controls. Wiring errors can cause improper and dangerous operation.

ATTENTION: Au moment de l'entretien des commandes, étiquetez tous les fils avant de les débrancher. Des erreurs de câblage peuvent entraîner un fonctionnement inadéquat et dangereux.

NOTE: DIAGRAMS AND ILLUSTRATIONS ARE NOT TO SCALE.

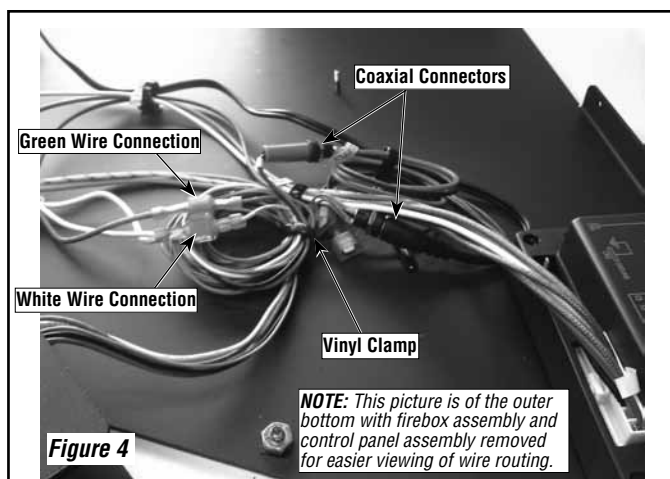


Figure 4

OPERATION

Remote Control System

The Remote and Receiver allows you to have On/Off burner operation control and provides thermostatic control of the appliance.

The Receiver accepts commands via radio frequency from the Remote (transmitter) and does not require line-of-sight operation.

The Receiver three position slider switch can be set to one of three positions: ON (Manual Override), REMOTE (Remote Control) or OFF.

Initializing The System For The First Time

Install the 4 AA batteries into the receiver battery bay (behind the switch plate). Note the polarity of the battery and insert into the battery bay as indicated on the Battery cover (+/-).

Place the 3 position slider switch in the "Remote" position (*see Figure 5*). Using the end of a paper clip, or other similar object, insert the end of the paper clip into the hole marked "PRG" on the Receiver front cover. The Receiver will "beep" three (3) times to indicate that it is ready to synchronize with the Remote (transmitter).

Install the 3 AAA type batteries in the Remote (transmitter) battery bay (customer supplied), located on the base of the Remote. With the batteries already installed in the Remote, push the ON button. The Receiver will "beep" four times to indicate the Remote's command is accepted and sets to the particular code of that Remote. The system is now initialized.

Low Battery Power Detection

The life span of the Receiver batteries depends on various factors: quality of the batteries used, the number of ignitions of the appliance, the number of changes to the room thermostat set point, etc.

When the Receiver batteries are low, two "beeps" will be emitted from the Receiver when it receives an ON/OFF command from the Remote.

This is an alert for a low battery condition for the Receiver. When the batteries are replaced the "beep" will be emitted from the Receiver when the ON/OFF key is pressed (See Initializing The System).



WARNING

Fire hazard. Can cause severe injury or death. The receiver causes ignition of the appliance. The appliance can turn on suddenly. Keep away from the appliance burner when operating the remote system or activating manual bypass of the remote system.

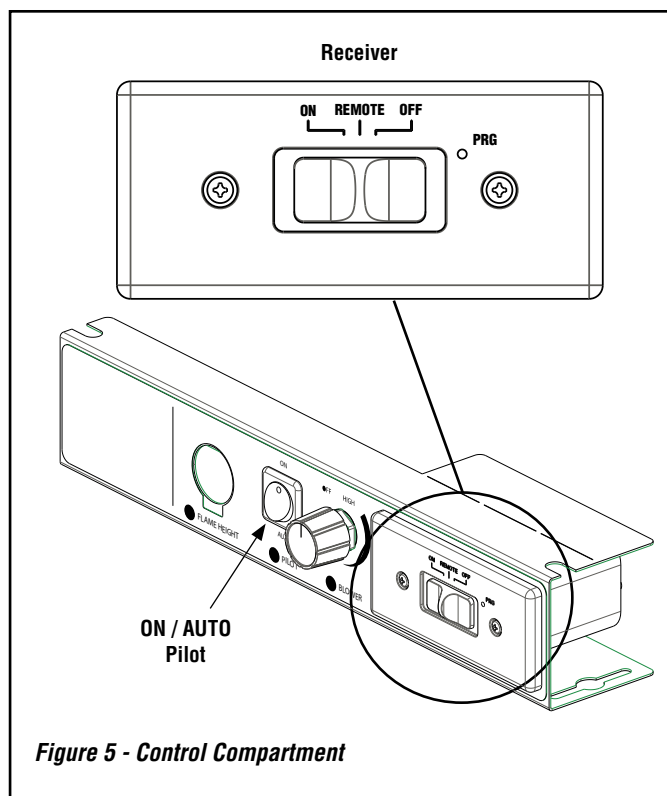


Figure 5 - Control Compartment

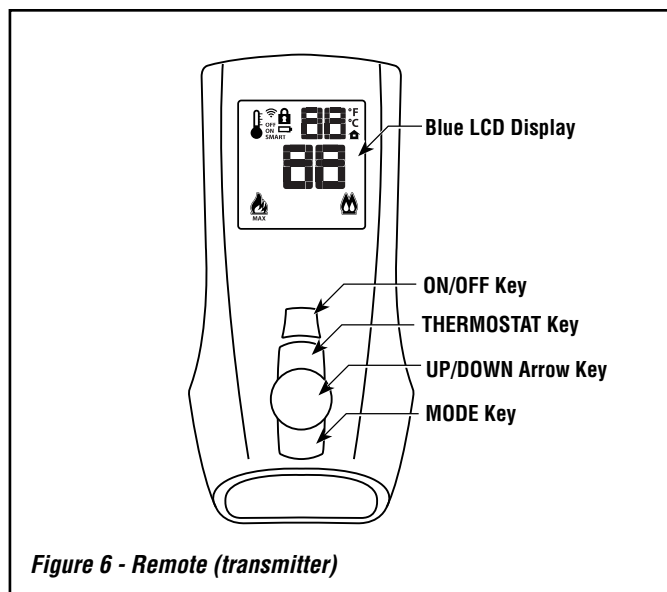


Figure 6 - Remote (transmitter)



CAUTION

Property damage hazard. Excessive heat can cause property damage. The appliance can stay lit for many hours. Turn off the appliance if it is not going to be attended for any length of time. Always place the Transmitter where children can not reach it.

Temperature Indicator Display

With the system in the "OFF" position, press the Thermostat Key and the Mode Key at the same time (see **Figure 6**). Look at the LCD screen on the Remote to verify that a C or F is visible to the right of the Room Temperature display (see **Figure 7**).

Turn On The Appliance

Press the ON/OFF Key on the Remote. The Remote display will show all active Icons on the screen (see **Figure 7**) and the appliance main burner will turn on. A single "beep" from the Receiver will confirm reception of the command.

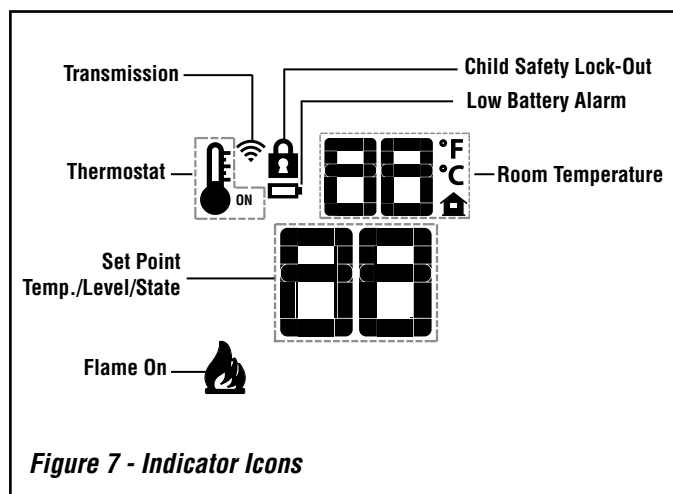
Turn Off The Appliance

Press the ON/OFF Key on the Remote. The Remote LCD display will only show the room temperature and Icon and the appliance burner will turn off. A single "beep" from the Receiver confirms reception of the command.

Room Thermostat (Remote Operation)

The Remote Control can operate as a room thermostat. The thermostat can be set to a desired temperature to control the comfort level in a room.

To activate this function, press the Thermostat Key. The LCD display on the Remote will change to show that the room temperature is "ON" and the set temperature is now displayed (see **Figure 7**). To adjust the set temperature, press the Up or Down Arrow Keys until the desired set temperature is displayed on the LCD screen of the Remote.



WARNING

THE REMOTE (TRANSMITTER) AND RECEIVER ARE RADIO FREQUENCY DEVICES. PLACING THE RECEIVER IN OR NEAR METAL MAY SEVERELY REDUCE THE SIGNAL RANGE.

Key Lock

This function will lock the keys to avoid unsupervised operation. To activate this function, press the MODE and UP keys at the same time. To de-activate this function, press MODE and UP Keys at the same time.

Manual Bypass Of The Remote System

If the batteries of the Receiver or Remote are low or depleted, the appliance can be turned on manually by sliding the three position slider switch to the ON position. This will bypass the remote control feature of the system and the appliance main burner will come on.

Intermittent/Standing Pilot Mode

This appliance can be switched from intermittent ignition to a standing pilot simply by toggling the switch located in the lower control compartment (refer to **Figure 5**). To save energy, switch to intermittent mode. To have a standing pilot which will help startup in the winter by warming the flue and the glass, switch to standing pilot.

The standing pilot mode is indicated by a pilot that comes on and remains lit when the appliance is off.

IHP reserves the right to make changes at any time, without notice, in design, materials, specifications, prices and also to discontinue colors, styles and products. Consult your local distributor for fireplace code information.

