

# OPERATING INSTRUCTIONS AND OWNER'S MANUAL

## MR. HEATER

MODEL

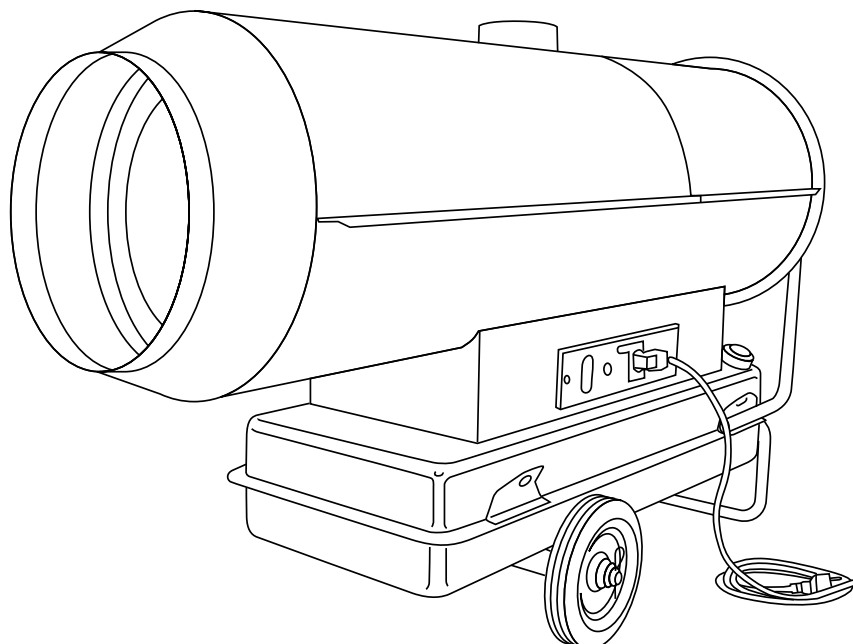
1000ID, 2000ID  
3000ID

**READ INSTRUCTIONS CAREFULLY:** Read and follow all instructions. Place instructions in a safe place for future reference. Do not allow anyone who has not read these instructions to assemble, light, adjust or operate the heater.

## HEATSTAR BY ENERCO

MODEL

1000ID, 2000ID  
3000ID, 4000ID



## INDIRECT FIRED PORTABLE HEATER

**WARNING:** If the information in this manual is not followed exactly, a fire or explosion may result causing property damage, personal injury or loss of life.

- Do not store or use gasoline or other flammable vapors and liquids in the vicinity of this or any other appliance.
- Service must be performed by a qualified service agency.

This is a vented portable heater. It uses air (oxygen) from the area in which it is used. Adequate combustion air and ventilation must be provided. Refer to page 5.

## WARNING:

- ⚠ YOUR SAFETY IS IMPORTANT TO YOU AND TO OTHERS, SO PLEASE READ THESE INSTRUCTIONS BEFORE YOU OPERATE THIS HEATER.

## GENERAL HAZARD WARNING:

- ⚠ FAILURE TO COMPLY WITH THE PRECAUTIONS AND INSTRUCTIONS PROVIDED WITH THIS HEATER, CAN RESULT IN DEATH, SERIOUS BODILY INJURY AND PROPERTY LOSS OR DAMAGE FROM HAZARDS OF FIRE, EXPLOSION, BURN, ASPHYXIATION, CARBON MONOXIDE POISONING, AND/OR ELECTRICAL SHOCK.
- ⚠ ONLY PERSONS WHO CAN UNDERSTAND AND FOLLOW THE INSTRUCTIONS SHOULD USE OR SERVICE THIS HEATER.
- ⚠ IF YOU NEED ASSISTANCE OR HEATER INFORMATION SUCH AS AN INSTRUCTIONS MANUAL, LABELS, ETC. CONTACT THE MANUFACTURER.

## WARNING:

- ⚠ NOT FOR HOME OR RECREATIONAL VEHICLE USE

## WARNING:

- ⚠ FIRE, BURN, INHALATION, AND EXPLOSION HAZARD. KEEP SOLID COMBUSTIBLES, SUCH AS BUILDING MATERIALS, PAPER OR CARDBOARD, A SAFE DISTANCE AWAY FROM THE HEATER AS RECOMMENDED BY THE INSTRUCTIONS NEVER USE THE HEATER IN SPACES WHICH DO OR MAY CONTAIN VOLATILE OR AIRBORNE COMBUSTIBLES, OR PRODUCTS SUCH AS GASOLINE, SOLVENTS, PAINT THINNER, DUST PARTICLES OR UNKNOWN CHEMICALS.

## WARNING:

- ⚠ **The State of California requires the following warning:** COMBUSTION BY-PRODUCTS PRODUCED WHEN USING THIS PRODUCT CONTAIN CARBON MONOXIDE, A CHEMICAL KNOWN TO THE STATE OF CALIFORNIA TO CAUSE CANCER AND BIRTH DEFECTS (OR OTHER REPRODUCTIVE HARM).

## WARNING:

### READ THE INSTRUCTIONS GIVEN IN THIS MANUAL BEFORE USING THE APPLIANCE.

- DO NOT USE GASOLINE, NAPHTHA OR VOLATILE FUELS.
- THE ELECTRICAL SYSTEM TO WHICH THE APPLIANCE IS CONNECTED MUST COMPLY WITH ALL SAFETY REGULATIONS IN FORCE. A RESIDUAL CURRENT CIRCUIT BREAKER MUST BE PROVIDED ON THE MAIN DISTRIBUTION BOARD.
- UNPLUG THE HEATER BEFORE ATTEMPTING ANY SERVICE OR MAINTENANCE.
- ALWAYS CHECK THE POWER SUPPLY CABLE BEFORE USE. IT MUST NOT BE BENT, CRUSHED, OR ANYWAY DAMAGED.
- THE POWER SUPPLY CABLE MUST BE REPLACED ONLY BY QUALIFIED PERSONNEL.
- ONLY USE AN ORIGINAL H07RN-F POWER CABLE WITH WATERPROOF PLUG.
- DO NOT TOUCH THE EXHAUST GAS OUTLET. DANGER OF BURNS!

## CONTENTS

WARNINGS.....	2
SPECIFICATIONS.....	3
OPERATION .....	4
SAFETY DEVICES.....	4
MAINTENANCE.....	5
VENTILATION.....	5
TROUBLESHOOTING .....	6
WIRING DIAGRAMS.....	7
PARTS LIST .....	11

## IMPORTANT

Before using the heater, read and understand all instructions and follow them carefully. The manufacturer is not responsible for damages to goods or persons due to improper use of units.

## GENERAL RECOMMENDATIONS

This indirect-fired heater runs on diesel fuel. Those with direct combustion send hot air and the combustion products into the room, while those with indirect combustion are fitted with a flue to take the fumes away through the chimney.

Always follow local ordinances and codes when using this heater:

- Read and follow this owner's manual before using the heater.
- Use only in places free of flammable vapors or high dust content.
- Never use heater in immediate proximity of flammable materials (the minimum distance must be 6 ft.).
- Make sure fire fighting equipment is readily available.
- Make sure sufficient fresh outside air is provided according

to the heater requirements. Direct combustion heaters should only be used in well vented areas in order to avoid carbon monoxide poisoning.

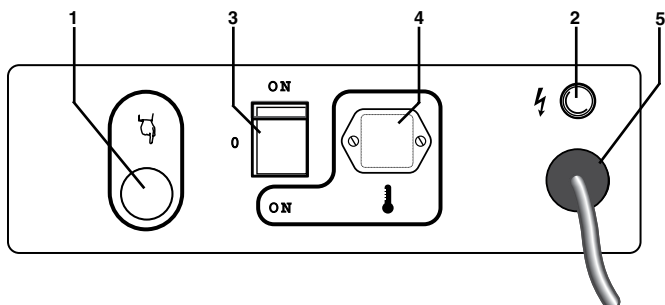
- The heater is installed near a chimney to take away the fumes (see "Ventilation" on page 5) and connected to an electrical switchboard.
- When the heater is connected to a flue pipe, the flue pipe shall terminate in a vertical section at least two feet long and sufficient draft shall be created to assure safe and proper operation of the heater.
- Never block air inlet (rear) or air outlet (front).
- In case of very low temperatures add kerosene to the heating oil.
- Make sure heater is always under surveillance and keep children and animals away from it;
- Before starting the heater always check free rotation of ventilator fan.
- Indirect fired units only can be connected to air ducts to distribute warm air, with respect to the max. static pressure declared (see "TECHNICAL SPECIFICATION" sheet).
- Unplug heater when not in use.

TECHNICAL SPECIFICATIONS		MH 1000ID HS 1000ID	MH 2000ID HS 2000ID	MH 3000ID HS 3000ID	HS 4000ID
Heat input	[kBTU/h]	110	205	300	400
Air flow	[cfm]	880	1,530	2,500	2,760
Fuel Type		Diesel/Kerosene/#1-2 Fuel Oil			
Heat output	[kBTU/h]	91.9	174.9	254.4	335.6
Fuel consumption	[gal/h]	0.80	1.48	2.28	2.82
	[lb/h]	5.53	10.35	15.07	20.07
Power supply	Phase	1	1	1	1
	Voltage	[V]	120	120	120
	Frequency	[Hz]	60	60	60
Electric consumption	[W]	520	785	1.240	1.440
	[A]	5.76	8.30	11.40	13.20
Nozzle	[USgal/h]	0.60-80° S	1.00-45° W	1.20-45° W	1.50-45° W
Pump pressure	[psi]	167	P1: 137	P1: 160	P1: 203
			P2: 239	P2: 350	P2: 348
Max static pressure	[in WC]	0.5	0.5	0.5	0.5
Recommended max. temp. in the air duct	[°F]	250	250	250	250
Adjustment of combustion air flap	[in]	a=0.32	-	-	-
	N°	-	A=1.02	A=1.50	B=1.14
Flue diameter	[in]	5.9	5.9	5.9	5.9
Compulsory flue draft	[in WC]	0.05	0.05	0.05	0.05
Tank capacity	[gal]	10.8	17.2	27.7	35.7
Dimensions, L x W x H	[in]	49.3x20.0x30.5	56.5x23.2x37.60	68.5x27.6x37.7	66.3x27.6x45.6
Net Weight	[lb]	94	176	264	330

## OPERATION

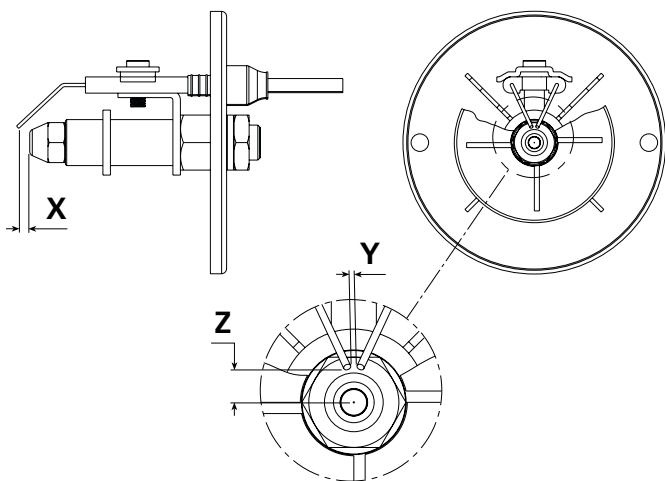
Before any attempt of starting the heater is made, check that your electrical supply conforms to the data on the model plate.

### Control Board



- 1 RESET BUTTON WITH CONTROL LAMP
- 2 CONTROL LAMP
- 3 MAIN SWITCH
- 4 ROOM THERMOSTAT PLUG
- 5 POWER CORD

### Gap of Electrodes



Models	X	Y	Z
ID1000	.079 in	.118 in	.256 in
ID2000	.158 in	.098 in	.158 in
ID3000	.158 in	.098 in	.158 in
ID4000	.158 in	.098 in	.158 in

### Clearances

The following minimum safety clearances from materials or objects in the surroundings of the heater must be ensured:

Sides	2.5 ft.	Air Inlet	2.5 ft.
Top	6 ft.	Air outlet	12 ft.

- Floors and ceilings must be made of fireproof materials in the room where the heater is operated.

- The air inlet and outlet must never be blocked for any reason.
- Install the heater on a flat, level floor in a steady position.
- It is forbidden to connect direct-fired heaters to air ducts.

## WARNING

- DO NOT USE GASOLINE, NAPHTHA OR VOLATILE FUELS.
- STOP HEATER BEFORE ADDING FUELS.
- ALWAYS FILL OUTDOORS AWAY FROM OPEN FLAME
- DO NOT USE EXTERNAL FUEL SOURCE.
- DO NOT OPERATE HEATER WHERE FLAMMABLE LIQUIDS OR VAPORS MAY BE PRESENT.
- DO NOT START HEATER WHEN CHAMBER IS HOT
- DO NOT START HEATER WHEN EXCESS FUEL HAS ACCUMULATED IN THE CHAMBER.
- DO NOT PLACE COOKING UTENSILS ON TOP OF THE HEATER.
- PLUG ELECTRICAL CORD INTO A PROPERLY GROUNDED THREE-PRONG RECEPTACLE.

The heater can only work automatically when a control device, such as for example a thermostat or a timer, is connected to the heater. Connection to the heater is made by removing the socket cover(4) and inserting the thermostat plug.

To start the machine you must:

- If connected to the thermostat, turn the switch to (ON + );
- If not connected to the thermostat, turn the switch to (ON).

When unit is started for the first time or is started after the oil tank has been totally emptied, the flow of oil to the burner may be impaired by air in the circuit. In this case the control box will cut out the heater and it might be necessary to renew the starting procedure once or twice by depressing the reset button (1).

Should the heater not start, check that oil tank is full and depress reset button (1).

Should the heater still not work, please refer to chapter "OBSERVED FAULTS, CAUSES AND REMEDIES".

## STOPPING THE HEATER

Set main switch (3) on "0" position or turn thermostat or other control device on lowest setting.

The flame goes out and the fan continues to work for approx. 90sec. cooling the combustion chamber.

## SAFETY DEVICES

The unit is fitted with an electronic flame control box. In case of malfunction this box will cut in and stop the heater, at the same time the pilot lamp in the control box reset button (1) will light up.

Heaters are also equipped with an overheat thermostat safety cutout which will stop the heater in case of overheating. This thermostat will reset automatically but you will have to depress button (1) on control box before being able to restart the heater.

## TRANSPORT

## WARNING

- Before making any attempt to restart heater find and eliminate reason of overheating.

Before heater is moved it must be stopped and unplugged. Before moving the heater wait till it has totally cooled off and make sure oil tank cap is securely fixed.

The hot air heaters with wheels must be wheeled. The suspended version which has no wheels must be transported with adequate machinery.

## MAINTENANCE

Preventive and regular maintenance will ensure a long trouble free life to your heater.

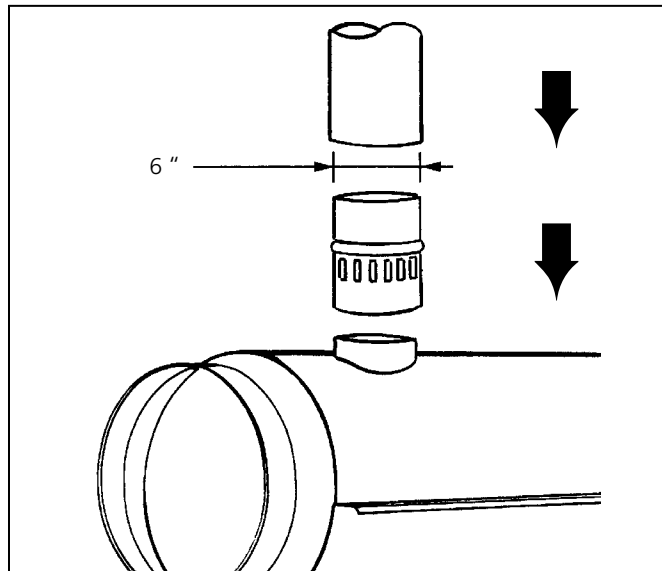
### **⚠ WARNING**

- Never service heater while it is plugged in, operating or hot. Severe burns or electrical shock can occur.

Every 50 hours of operation: disassemble filter and wash with clean oil, remove upper body parts and clean inside and ventilator with compressed air, check correct attachment of H.T. connectors to the electrodes and check H.T. cables, remove burner assembly, clean and check electrode settings, adjust according to scheme "GAP OF ELECTRODES".

### Flue Connections Diagram

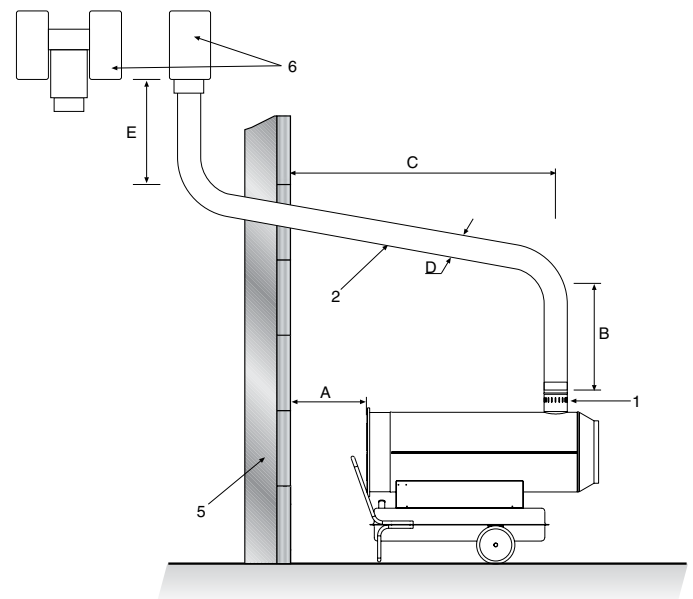
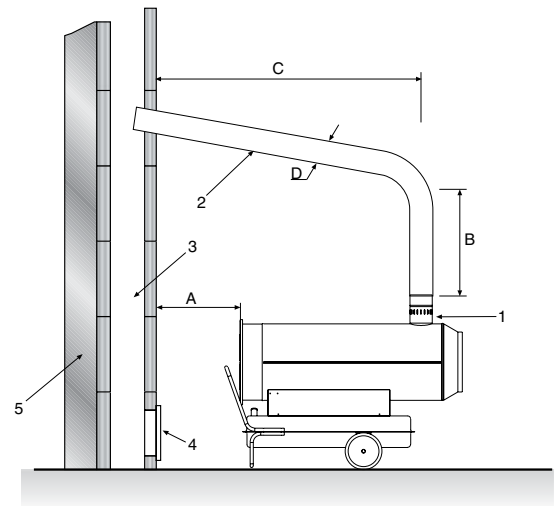
## VENTILATION



## Description

- A) Minimal 39"
- B) Minimal 39"
- C) The shortest
- D) The same or bigger than the smokes outlet diameter of heater
- E) Minimal 1m
- 1) Anti-wind device provided with the heater
- 2) Horizontal crossing with minimal upside angle pitch of 5°
- 3) Chimney 8" x 8" of minimal inside measure
- 4) Chimney anti-explosion flap door
- 5) External seating wall
- 6) Chimney ending H shape

**N.B. Above recommendation indicative only. Have your installation checked by local authority.**

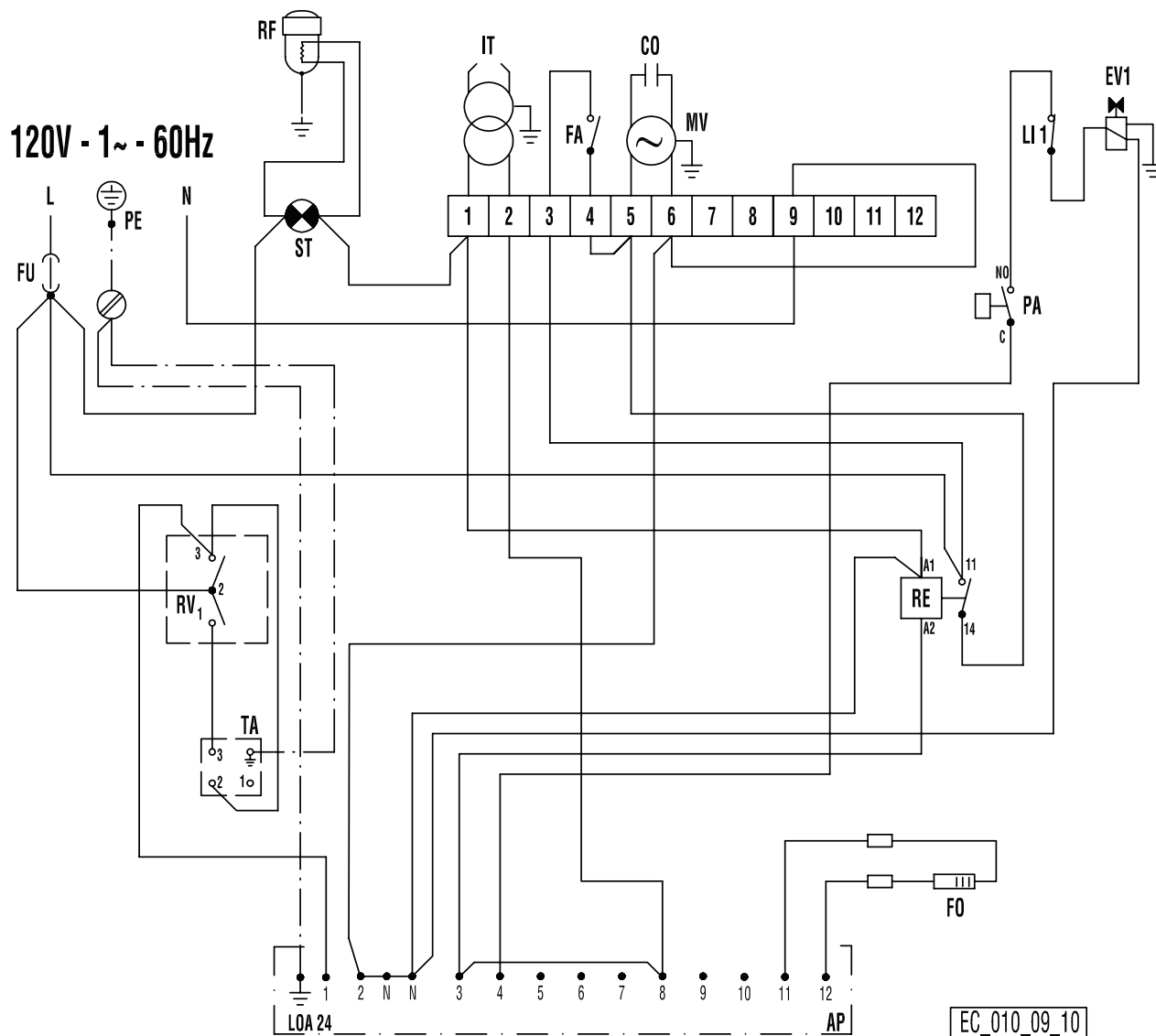


## TROUBLESHOOTING

TROUBLE	CAUSE	SOLUTION
<b>Motor does not start, no ignition</b>	No electrical current	Check mains (should be 120 V – 1~ – 60 Hz) Check proper positioning and functioning of switch Check fuse
	Wrong setting of room thermostat or other control	Check correct setting of heater control. If thermostat, make sure selected temperature is higher than room temperature
	Thermostat or other control defective	Replace control device
	Electrical motor defective	Replace electrical motor
	Electrical motor bearings defective	Replace electrical motor bearings
	Burned out condenser	Replace condenser
<b>Motor starts, no ignition or cuts out</b>	Electric ignitor defective	Check connection of H.V. leads to electrodes and transformer Check electrodes setting (see scheme "GAP OF ELECTRODES") Check electrodes for cleanliness Replace H.V. transformer
	Flame control box defective	Replace control box
	Photocell defective	Clean or replace photocell
	Not enough or no fuel at all at burner	Check state of motor-pump plastic coupling Check fuel line system including fuel filter for possible leaks Clean or replace oil nozzle
	Solenoid defective	Check electrical connection Check thermostat LI Clean or replace solenoid
<b>Motor starts, heater emits smoke</b>	Not enough combustion air	Make sure air inlet and outlet are free Check setting of combustion air flap Clean burner disc
	Too much combustion air	Check setting of combustion air flap
	Fuel contaminated or contains water	Drain fuel in tank with clean fuel Clean oil filter
	Air leaks in fuel circuit	Check the seals on the ducts and the diesel filter
	Not enough fuel at burner	Check pump pressure Clean or replace fuel nozzle
	Too much fuel at burner	Check pump pressure Replace nozzle
<b>Heater does not stop</b>	Solenoid	Replace solenoid coil or complete solenoid

If heater still not working properly, please revert to nearest authorized dealer.

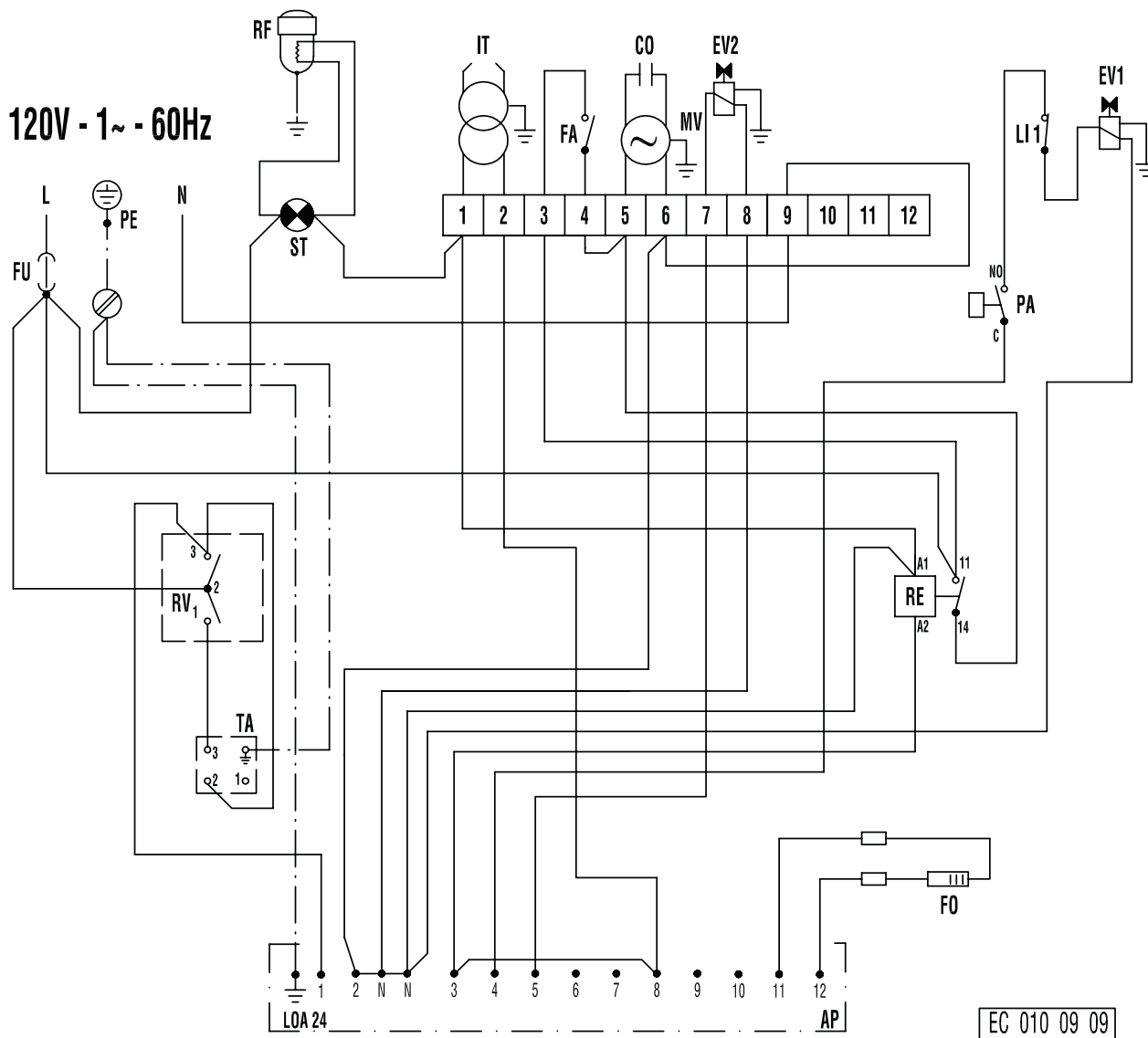
# **WIRING DIAGRAM** **1000ID SERIES MODELS**



## **DRAWING LEGEND**

<b>FU</b>	Fuse	<b>RV</b>	Control
<b>IT</b>	Transformer H.V.	<b>TA</b>	Room Thermostat
<b>LI1</b>	Overheat Thermostat	<b>RE</b>	Relays
<b>EV1</b>	Solenoid Valve 1°	<b>AP</b>	Control Box
<b>FO</b>	Photocell	<b>PA</b>	Air pressure control
<b>CO</b>	Condenser	<b>RF</b>	Heater filter
<b>MV</b>	Fan Motor	<b>FA</b>	Fan thermostat
<b>ST</b>	Electric pilot	<b>PE</b>	Ground

# **WIRING DIAGRAM** **2000ID AND 3000ID SERIES MODELS**

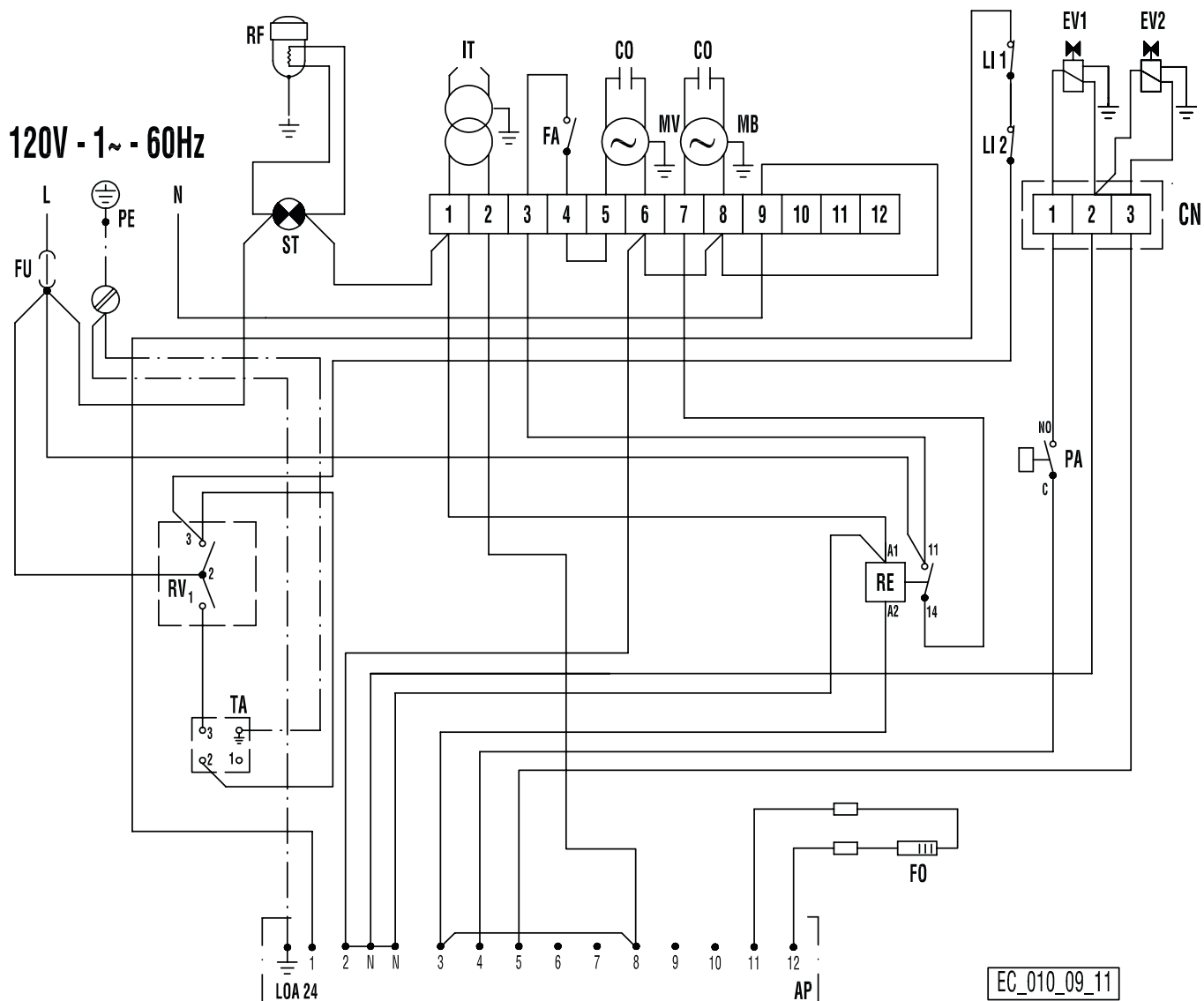


## **DRAWING LEGEND**

FU	Fuse 20A	RV	Control
IT	Transformer H.V.	TA	Room Thermostat plug
LI1	Overheat Thermostat	RE	Relay
EV1	Solenoid Valve 1°	AP	Control Box
EV2	Solenoid Valve 2°	FA	Fan thermostat
FO	Photocell	PA	Air pressure control
CO	Condenser	RF	Heated filter
MV	Fan Motor	PA	Air pressure switch
ST	Electric pilot lamp	PE	Ground



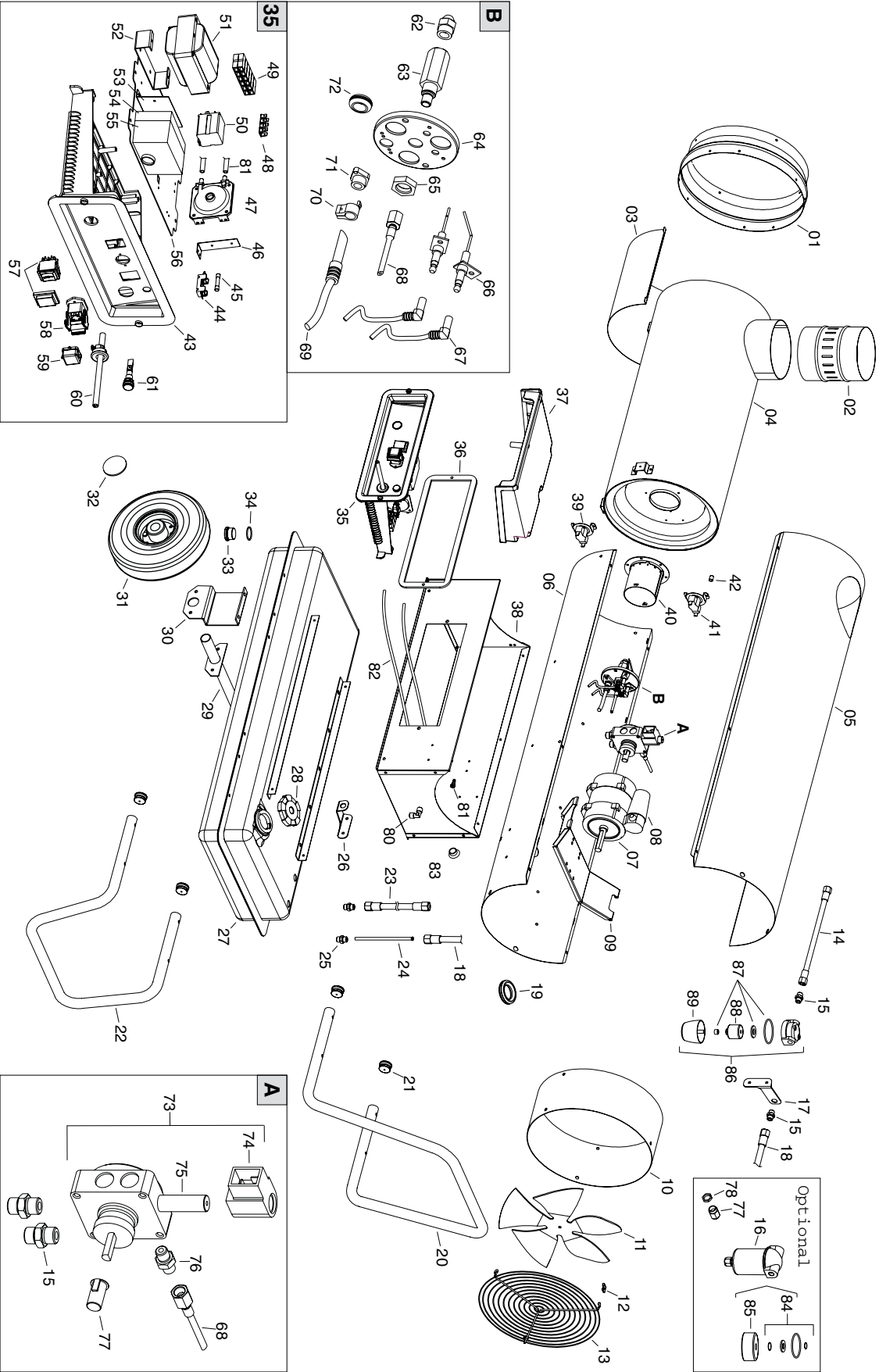
## WIRING DIAGRAM 4000ID SERIES MODELS



### DRAWING LEGEND

FU	Fuse 20A	TA	Room Thermostat plug
IT	Transformer H.V.	RE	Relay
LI1	Overheat Thermostat	AP	Control Box
EV1	Solenoid Valve 1°	FA	Fan thermostat
EV2	Solenoid Valve 2°	RF	Heated filter
FO	Photocell	CN	Connector
CO	Condenser	LI2	Overheat safety thermostat
MV	Fan Motor	PE	Ground
ST	Electric pilot lamp		
RV	Control		

1000ID Series Indirect-Fired Portable Heater

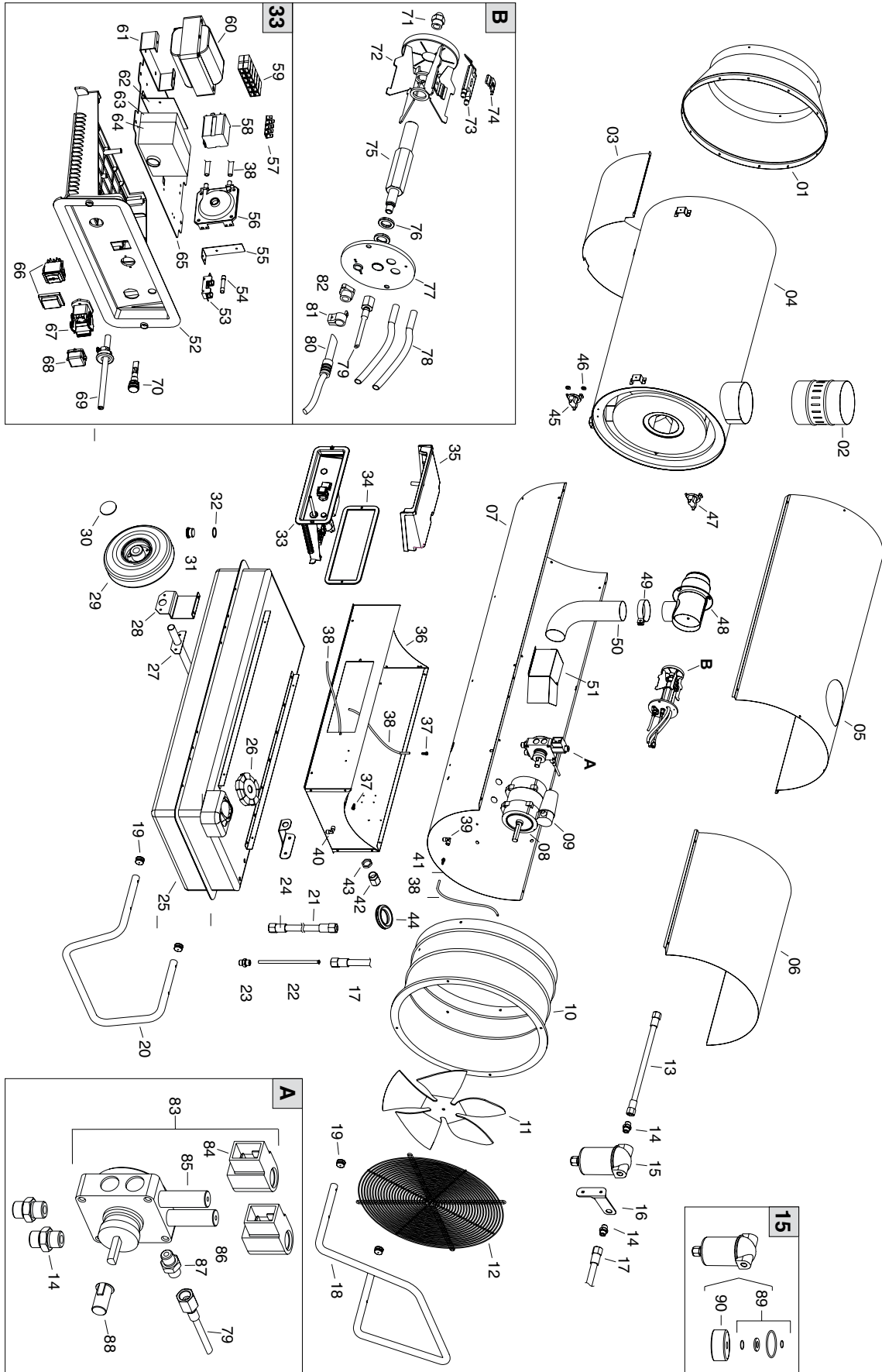


## 1000ID Series Indirect-Fired Portable Heater Parts List

NO.	STOCK NO.	DESCRIPTION
01	G06075-9010	OUTLET CONE
02	G06077	CHIMNEY Ø 150
03	G06079	COMBUSTION CHAMBER SUPPORT
04	G06081	COMBUSTION CHAMBER
05	G06083-9010	UPPER BODY
06	G06085-9010	LOWER BODY
07	E10677-110	MOTOR 200W WITH CONDENSER
08	E11208	CONDENSER 20 µF
09	G06067	MOTOR FLANGE
10	G06070-9010	FAN PROTECTION RING
11	T10207	FAN Ø300 18°
12	M20402	ELASTIC PLATE U42-032
13	P30165	INLET GRILLE
14	I40330	TUBE BP 1/4" FF L.420MM
15	I20104	NIPPLE FE 1/4" MM
16	T20239	FILTER WITH CARTRIDGE
17	G06104-9005	FILTER SUPPORT
18	I40329	TUBE BP 1/4" FF L.260MM
19	C30307	PROTECTION CABLE Ø 35
20	P20174-9005	HANDLE
21	C30319	PLUG Ø25
22	P20175-9005	FOOT
23	I40331	TUBE BP 1/4" F L.580MM
24	I30695	PASCANTE L.150MM
25	I30737	NIPPLE OT 1/4" M - M12X1.75M
26	G06068-9005	POWER LEAD HOOK
27	G06099-9005	FUEL TANK
28	C30356	DRAIN PLUG
29	G06105-9005	WHEEL AXLE
30	G06106-9005	WHEELS AXLE SUPPORT
31	C10546	WHEEL Ø 260 - Ø 25
32	M20202	SPRING WASHER Ø20
33	I25019	FUEL TANK
34	C30350	OR Ø30 X 2.62
35	G00212	EL. COMPONENTS DRAWER
36	C30425	SEAL
37	P50127	CONTROL BOX COVER
38	G06108-9010	BASE
39	E50101	LIMIT THERMOSTAT
40	G06087	BLAST TUBE
41	E50102	FAN THERMOSTAT
42	G06072	SLEEVE Ø8 X Ø6 X 9.5
43	P50126	ELECTR. COMPONENTS DRAWER
44	E20508	FUSE HOLDER
45	E10308	FUSE (6X30) 10A

NO.	STOCK NO.	DESCRIPTION
46	G06102	SWITCH SUPPORT
47	E50437	PRESSURE SWITCHES HONEYWELL
48	E20319	TERMINAL BOARD
49	E20305	TERMINAL BOARD
50	E11125	RELAY FINDER 65.31 AC
51	E10917-2	TRANSFORMER H.T. 818C 110V
52	G06109	TRANSFORMER H.T. FLANGE
53	G06103	SUPPORT
54	E40107	LANDIS LOA 21-24 BASE
55	E40113	CONTROL BOX LANDIS LOA 21-24
56	G06073	PLATE FOR ELECTRICAL COMPONENTS
57	E10102-P	SWITCH 0 - 1
58	E20640	THERMOSTAT PLUG 3P+T
59	E20665	DRAIN PLUG
60	E30443	EL. WIRE WITH PLUG AND CABLE FASTENER
61	E11030	LAMP 230V
62	T20339	NOZZLE 0.60 GPH 80° S
63	I33001	NOZZLE SUPPORT
64	P20526	BURNER FLANGE Ø 80MM
65	I31034	NUT M14
66	E10248	ELECTRODE
67	G02076	H.T. CABLE CONNECT 90°
68	I40192	MICRO PIPE
69	E50306	LD. PH. UNIT L&G QRB1A
70	E50307	FIXING CLAMP
71	E50308	PHOTO RESISTANCE FLANGE
72	C30352	CABLE PROTECTION Ø15
73	T20429-1	PUMP DANFOSS BFP01
74	T20118	SOLENOID SPOOL BFP11-21 DANFOSS
75	T20117	SOLENOID VALVE DANFOSS
76	I20115	NIPPLE FE 1/8" MM
77	E10513	COUPLING K1
78	E20953	CABLE HOLDER PG11
79	E20954	RING NUT PG11
80	I20325	CONNECTION 1/8"
81	I31130	CONN. STRAIGHT Ø6 1/8"
82	I40332	SILICONE PIPE Ø5X9
83	C30319	RUBBER TAP
84	T20241	OR KIT OIL FILTER
85	T20242	FILTER CARTRIDGE
86	T20201	OIL FILTER 1/4"
87	T20234	OR KIT OIL FILTER
88	T20206	FILTER CARTRIDGE
89	T20212	FILTER HOUSING

# 2000ID/3000ID Series Indirect-Fired Portable Heaters

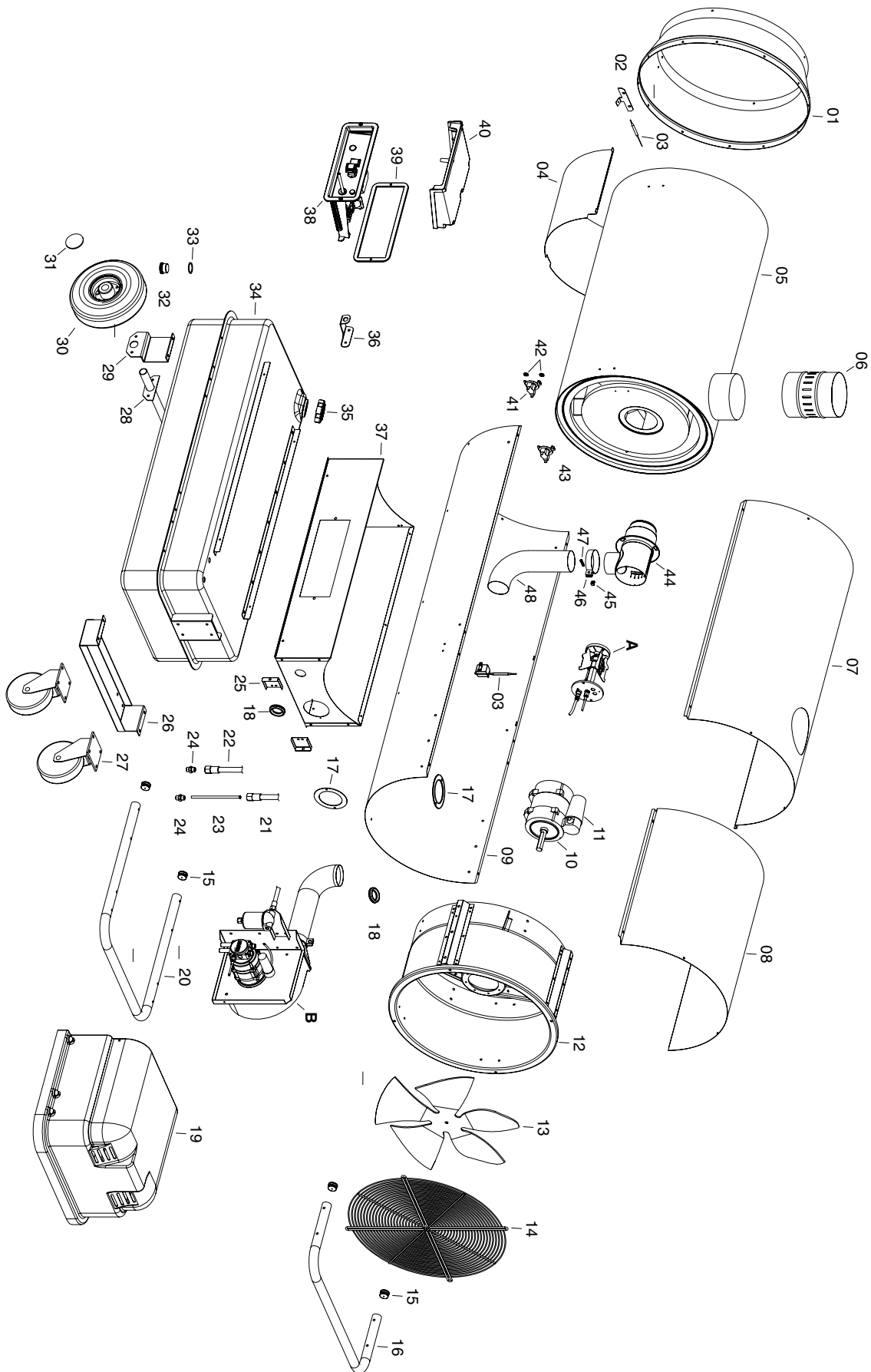


## 2000ID/3000ID Series Indirect-Fired Portable Heater Parts List

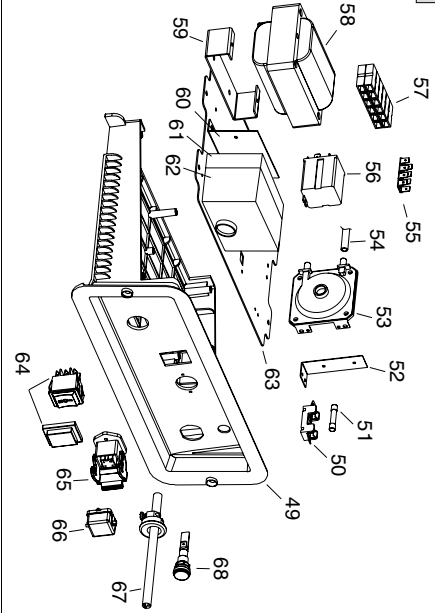
NO.	STOCK NO.	2000	3000	DESCRIPTION
01	G06113-9010	•		OUTLET CONE
	G06114-9010		•	
02	G06077	•	•	CHIMNEY Ø 150
03	G06115	•		COMBUSTION CHAMBER SUPPORT
	G06116		•	
04	G06117	•		COMBUSTION CHAMBER
	G06118		•	
05	G06119-9010	•		UPPER BODY
	G06120-9010		•	
06	G06121-9010	•		COVER INSPECTION
	G06122-9010		•	
07	G06123-9010	•		LOWER BODY
	G06124-9010		•	
08	E10678-110	•		MOTOR 450W WITH CONDENSER
	E10679-110		•	MOTOR 750W WITH CONDENSER
09	E11230	•		CONDENSER 40µF
	E11229		•	CONDENSER 40µF
10	G06125-9010	•		MOTOR FLANGE
	G06126-9010		•	
11	T10260	•		FAN Ø356 18°
	T10261		•	FAN Ø500 23°
12	P30169	•		INLET GRILLE
	P30129		•	
13	I40330	•	•	TUBE BP 1/4" FF L.420MM
14	I20104	•	•	NIPPLO FE 1/4" MM
15	T20239	•	•	OIL PRE-HEATERS FILTER 1/4"
16	G06104-9005	•	•	FILTER SUPPORT
17	I40329	•	•	TUBE BP 1/4" FF L.260MM
18	P20174-9005	•		HANDLE
	P20176-9005		•	
19	C30319	•	•	PLUG Ø25
20	P20175-9005	•		FOOT
	P20177-9005		•	
21	I40331	•	•	TUBE BP 1/4" F L.580MM
22	I30696	•	•	PASCANTE L.220MM
23	I30737	•	•	NIPPLO OT 1/4" M - M12X1.75M
24	G06068-9005	•	•	POWER LEAD HOOK
25	G06127-9005	•	•	FUEL TANK 65 L
	G06128-9005	•	•	FUEL TANK 105 L
26	C30367	•	•	DRAIN PLUG
27	G06105-9005	•		WHEEL AXLE
	G06129-9005		•	WHEELS AXLE SUPPORT
28	G06106-9005	•	•	WHEEL Ø 260 - Ø 25
29	C10546	•	•	SPRING WASHER Ø 25
30	M20202	•	•	FUEL TANK
31	I25019	•	•	OR Ø30 X 2.62
32	C30350	•	•	EL. COMPONENTS DRAWER
33	G00213	•	•	SEAL
34	C30425	•	•	CONTROL BOX COVER
35	P50127	•	•	BASE
36	G06130-9010	•		
	G06131-9010		•	CONN. STRAIGHT Ø6 1/8"
37	I31130	•	•	SILICONE PIPE Ø5X9
38	I40332	•	•	CONNECTION 1/8"
39	I30325-1	•	•	CONNECTION 1/8"
40	I20325	•	•	CONNECTION 1/8"

NO.	STOCK NO.	2000	3000	DESCRIPTION
41	I31130	•	•	CONN. STRAIGHT Ø6 1/8"
42	E20953	•	•	CABLE HOLDER PG11
43	E20954	•	•	RING NUT PG11
44	C30307	•	•	PROTECTION CABLE 035
45	E50102	•	•	LIMIT THERMOSTAT
46	M20107	•	•	WASHER Ø5 X Ø15 X 1.5
47	E50101	•		FAN THERMOSTAT
	E50104		•	
48	G06132	•	•	BLAST TUBE
49	G06133	•	•	CLIP FOR FLEXIBLE DUCTS
50	I40801	•		DOPPELMATERIAL-SCHLAUCH L=170 MM
	I40802		•	DOPPELMATERIAL-SCHLAUCH L=170 MM
51	G06134	•	•	AIR FLAP
52	P50126	•	•	ELECTR. COMPONENTS DRAWER
53	E20508	•	•	FUSE HOLDER
54	E10313	•	•	FUSE (6X30) 20A
55	G06102	•	•	SVVITCH SUPPORT
56	E50437	•	•	PRESSURE SWITCHES HONEYWELL
57	E20319	•	•	TERMINAL BOARD
58	E11125	•	•	RELAY FINDER 65.31 AC
59	E20305	•	•	TERMINAL BOARD
60	E10917-2	•	•	TRANSFONNER H.V. 818C 110V
61	G06109	•	•	TRANSFONNER H.V. FLANGE
62	G06103	•	•	SUPPORT
63	E40107	•	•	LANDIS LOA 21-24 BASE
64	E40113	•	•	CONTROL BOX LANDIS LOA 21-24
65	G06073	•	•	PLATE FOR ELECTRICAL COMPONENTS
66	E10102-P	•	•	SWITCH 0 -1
67	E20640	•	•	THERMOSTAT PLUG 3P+T
68	E20665	•	•	DRAIN PLUG
69	E30443	•	•	EI. WIRE WITH PLUG AND CABLE FASTENER
70	E11030	•	•	LAMP 230V
71	T20354	•		NOZZLE 1,00 GPH 45° W
	T20351		•	NOZZLE 1,20 GPH 45° W
72	P10137	•		BURNER'S HEAD WITH ELECTRODES
	P10138		•	BURNER'S HEAD WITH ELECTRODES
73	E10254	•	•	ELECTRODES
74	P10134	•	•	ELECTRODES STIRRUP
75	I33002	•	•	NOZZLE SUPPORT
76	I30685	•	•	WASHER DIAM. 14
77	P20529	•	•	BURNER FLANGE Ø 102MM
78	G02076	•	•	H.T. CABLE CONNECT. 90°
79	I40192	•	•	MICROPIPE
80	E50306	•	•	LD PH. UNIT L&G QRB1A
81	E50307	•	•	FIXING CLAMP
82	E50308	•	•	PHOTORESISTANCE FLANGE
83	T20439-1	•		PUMP DANFOSS BFP 52E R3
	T20440-1		•	PUMP DANFOSS BFP 52E R5
84	T20118	•	•	SOLENOID SPOOL BFP 52E DANFOSS
85	T20129	•	•	SOLENOID VALVE DANFOSS (NO)
86	T20117	•	•	SOLENOID VALVE DANFOSS (NC)
87	I20115	•	•	NIPPLO FE 118" MM
88	E10513	•		COUPLING K1
	E10514		•	COUPLING K2
89	T20241	•	•	OR KITOIL FILTER
90	T20242	•	•	FILTER CARTRIDGE

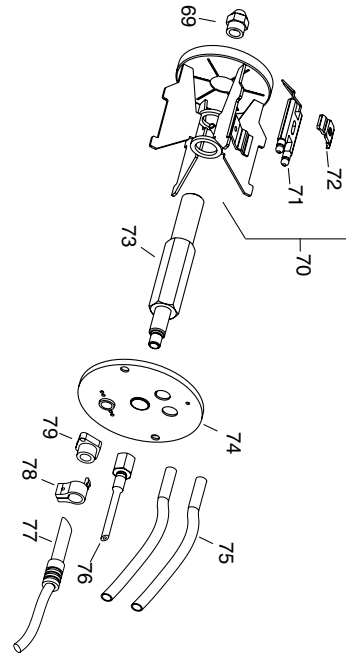
# 4000ID Series Indirect-Fired Portable Heaters



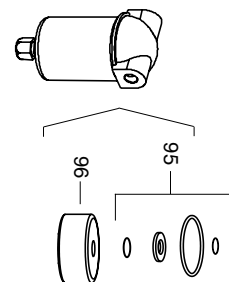
38



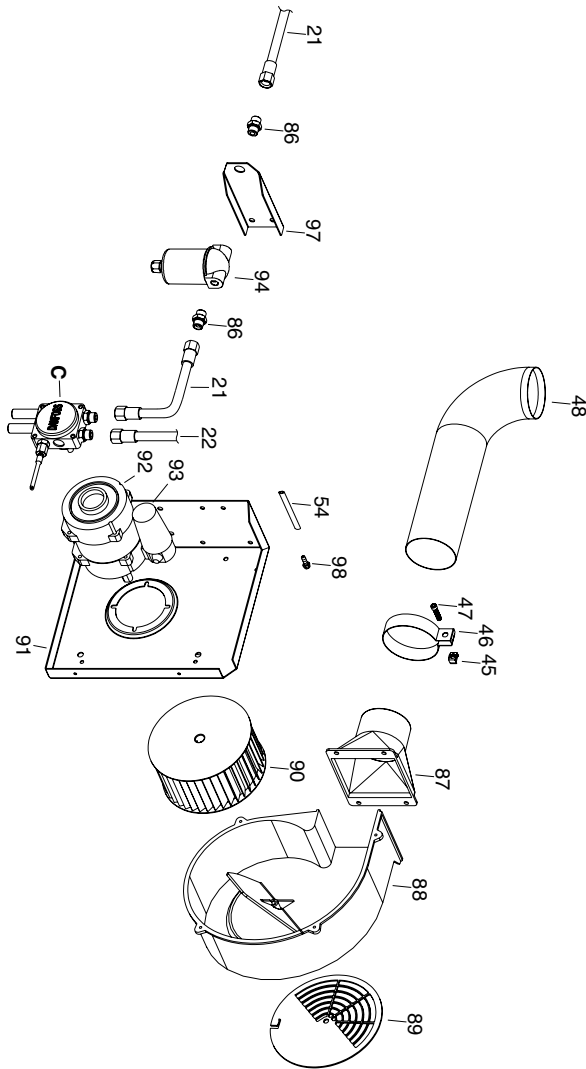
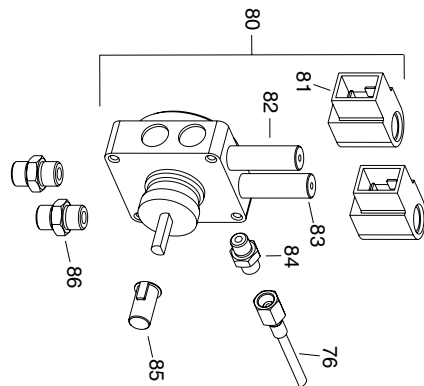
A



94



C



## 4000ID Series Indirect-Fired Portable Heater Parts List

NO.	STOCK NO.	DESCRIPTION
01	G06156-9010	Outlet cone
02	G06157	Centrifuge air fan
03	E50767	Thermostat TY95A 105°C Campini
04	G06171	Combustion chamber support
05	G06158	Combustion chamber
06	G06077	Chimney Ø 150
07	G06159-9010	Upper body
08	G06160-9010	Cover inspection
09	G06161-9010	Lower body
10	E10679-110	Motor 750W with condenser
11	E11229	Condenser 80 µF
12	G06172-9010	Motor flange
13	T10261	Fan Ø500 23°
14	P30129	Inlet grille
15	C30328	Plug Ø30
16	P20182-9005	Handle
17	G06162-9010	Washer for Air duct
18	C30307	Protection cable Ø 35
19	P50133	Crankcase
20	P20181-9005	Wheels frame
21	140333	Tube BP 1/4" FF L.200mm
22	140330	Tube BP 1/4" FF L.420mm
23	130696	Pascante L.290mm
24	130737	Nipplo OT 1/4" M - M12x1,75 M
25	G06163-9005	Stirrup
26	G06164-9005	Wheels support
27	C10547	Pivotal wheel
28	G06129-9005	Wheel axle
29	G06151-9005	Wheels axle support
30	C10546	Wheel Ø 260 - Ø 25
31	M20202	Spring washer Ø25
32	125019	Drain plug
33	C30350	OR Ø30 x 2,62

NO.	STOCK NO.	DESCRIPTION
34	G06165-9005	Fuel tank 135 l
35	C30367	Drain plug
36	G06068-9005	Power lead hook
37	G06166-9010	Base
38	G00214	El. componets drawer
39	C30425	Seal
40	P50127	Control box cover
41	E50102	Limit Thermostat
42	M20107	Washer Ø5 x Ø15 x 1,5
43	E50104	Fan Thermostat
44	G06167	Blast tube
45	M20408	Nut M5
46	G06133	Clip for flexible ducts
47	M10244	Screw TCEI M5x14
48	140803	Air duct L=600 mm
49	G06153	Electr. componets drawer
50	E20508	Fuse holder
51	E10313	Fuse (6x30) 20A
52	G06102	Switch support
53	E50437	Pressure switchesHONEYWELL
54	140332	Silicone pipe Ø5x9
55	E20319	Terminal board
56	E11125	Relay Finder 65.31 AC
57	E20305	Terminal board
58	E10917-2	Transformer H.T. 818C 110V
59	G06109	Transformer H.T. flange
60	G06103	Support
61	E40107	LANDIS LOA 21-24 base
62	E40113	Control box LANDIS LOA 21-24
63	G06073	Plate for electrical components
64	E10102-P	Switch Ø-1
65	E20640	Thermostat plug 3P+T
66	E20665	Drain plug



## 4000ID Series Indirect-Fired Portable Heater Parts List

NO.	STOCK NO.	DESCRIPTION
67	E30443	El. wire with plug and cable fastener
68	E11030	Lamp 230V
69	T20353	Nozzle 1,50 GPH 45° W
70	P10137	Burner's head with electrodes
71	E10254	Electrodes
72	P10134	Electrodes stirrup
73	133002	Nozzle support
74	P20529	Burner flange Ø 102mm
75	G02076	H.T. Cable connect. 90°
76	140193	Micropipe L=800 mm
77	E50306	Ld ph. Unit L&G QRB1A
78	E50307	Fixing clamp
79	E50308	Photoresistance flange
80	T20439-1	Pump Danfoss BFP 52E R3
81	T20118	Solenoid spool BFP 52E Danfoss
82	T20129	Solenoid valve Danfoss (NO)
83	T20117	Solenoid valve Danfoss (NC)
84	120115	Nipplo FE 1/8" MM
85	E10513	Coupling K1
86	120104	Nipplo FE 1/4" MM
87	C10328	Leitungskanal
88	C10326	Spiral fan
89	G06168	Shutter for air regulation
90	T10262	Fan AP 160x55 F12,7
91	G06169-9005	Support fan and motor
92	E10677-110	Motor 200W with condenser
93	E11233	Condenser 20 IJF
94	T20239	Oil pre-heaters filter 1/4"
95	T20241	OR KIToil filter
96	T20242	Filter cartridge
97	G06170-9005	Filter support
98	131121	Conn. Straight Ø4,5 M5

**COLUMN INTENTIONALLY  
LEFT BLANK**

# OPERATING INSTRUCTIONS AND OWNER'S MANUAL

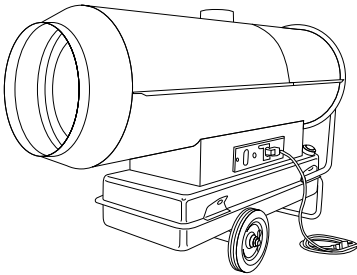
## MR. HEATER

**MODEL** 1000ID, 2000ID  
3000ID

**READ INSTRUCTIONS CAREFULLY:** Read and follow all instructions. Place instructions in a safe place for future reference. Do not allow anyone who has not read these instructions to assemble, light, adjust or operate the heater.

## HEATSTAR BY ENERCO

**MODEL** 1000ID, 2000ID  
3000ID, 4000ID



### WARNING:

USE ONLY MANUFACTURER'S REPLACEMENT PARTS. USE OF ANY OTHER PARTS COULD CAUSE INJURY OR DEATH. REPLACEMENT PARTS ARE ONLY AVAILABLE DIRECT FROM THE FACTORY AND MUST BE INSTALLED BY A QUALIFIED SERVICE AGENCY.

### PARTS ORDERING INFORMATION:

**PURCHASING:** Accessories may be purchased at any Mr. Heater/HeatStar local dealer or direct from the factory

#### FOR INFORMATION REGARDING SERVICE

Please call Toll-Free 800-251-0001 • [www.enerco-mrheater.com](http://www.enerco-mrheater.com)

Our office hours are 8:30 AM – 5:00 PM, EST, Monday through Friday.

Email to: [techservice@enerco-mrheater.com](mailto:techservice@enerco-mrheater.com)

Please include the model number, date of purchase, and description of problem in all communication.

### LIMITED WARRANTY

The company warrants this product to be free from imperfections in material or workmanship, under normal and proper use in accordance with instructions of The Company, for a period of one year from the date of delivery to the buyer. The Company, at its option, will repair or replace products returned by the buyer to the factory, transportation prepaid within said one year period and found by the Company to have imperfections in material or workmanship.

If a part is damaged or missing, call our Technical Support Department at 800-251-0001.

Address any Warranty Claims to the Service Department, Enerco Group, Inc., 4560 W. 160TH ST., Cleveland, Ohio 44135. Include your name, address and telephone number and include details concerning the claim. Also, supply us with the purchase date and the name and address of the dealer from whom you purchased our product.

The foregoing is the full extent of the responsibility of the Company. There are no other warranties, express or implied. Specifically there is no warranty of fitness for a particular purpose and there is no warranty of merchantability. In no event shall the Company be liable for delay caused by imperfections, for consequential damages, or for any charges of the expense of any nature incurred without its written consent. The cost of repair or replacement shall be the exclusive remedy for any breach of warranty. There is no warranty against infringement of the like and no implied warranty arising from course of dealing or usage of trade. This warranty will not apply to any product which has been repaired or altered outside of the factory in any respect which in our judgment affects its condition or operation.

Some states do not allow the exclusion or limitation of incidental or consequential damages, so the above limitation or exclusion may not apply to you. This Warranty gives you specific legal rights, and you may have other rights which vary from state to state.

Enerco Group, Inc. reserves the right to make changes at any time, without notice or obligation, in colors, specifications, accessories, materials and models.

ENERCO GROUP, INC., 4560 W. 160TH ST., CLEVELAND, OHIO 44135 • 800-251-0001  
Mr. Heater is a registered trademark of Enerco Group, Inc.  
© 2004, ENERCO GROUP, INC. All rights reserved