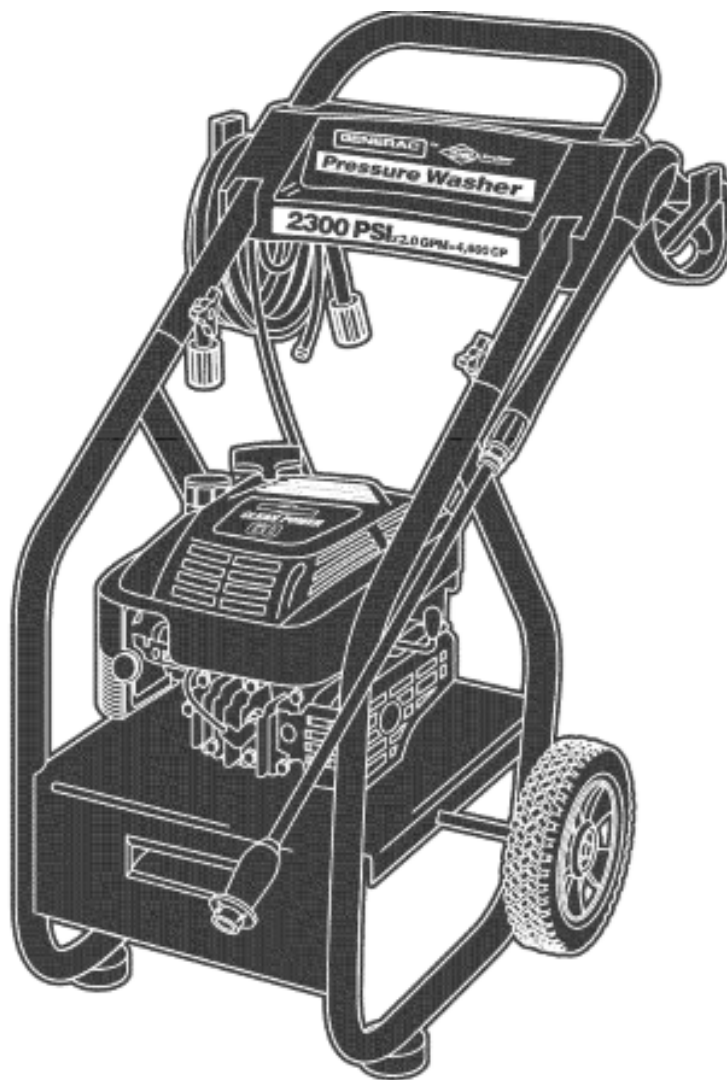


1674-0

Owner's Manual & Parts Breakdown



FOR QUESTIONS AND CONCERNS, CONTACT US AT

Allparts Equipment &
Accessories Inc.

www.allpartsinc.com

Call Us: 1-269-685-4123

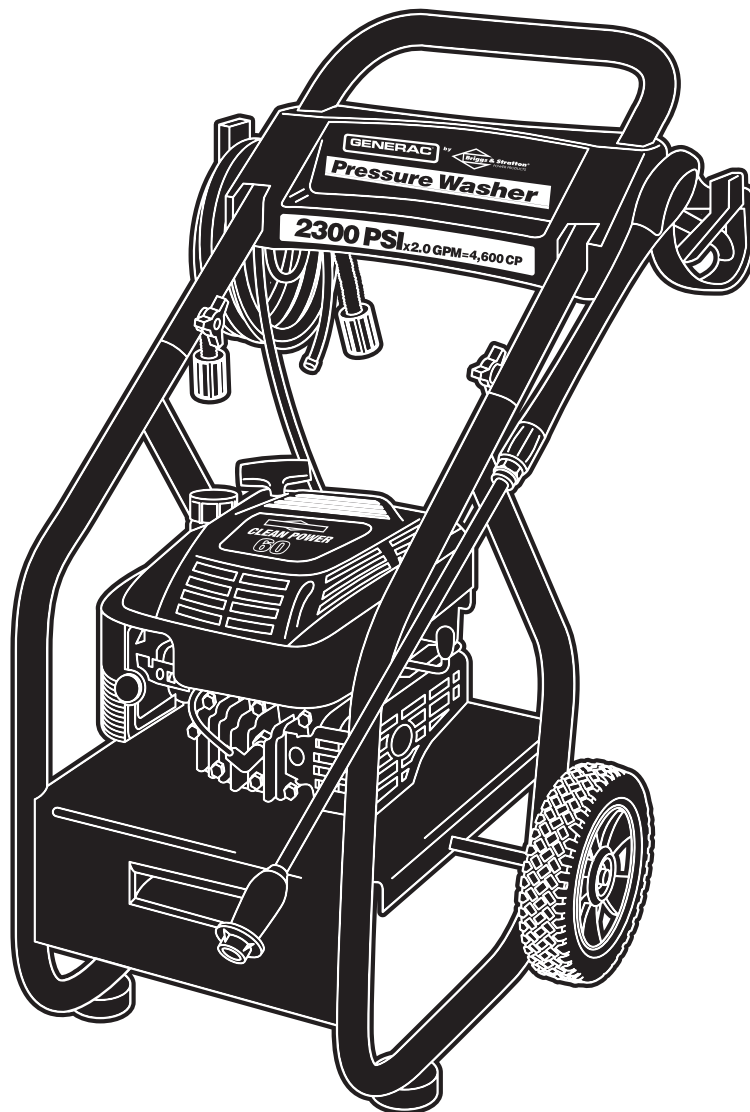
Text Us: 1-269-447-0412

GENERAC®
Portable Products

by



2300 PSI



Pressure Washer Owner's Manual

Questions? Help is just a moment away!

Call: **Generac Pressure Washer Helpline - 1-800-270-1408** M-F 8-5 CT

Web: www.generac-portables.com or www.briggsandstratton.com

Model No. I674-0 (2,300 PSI Pressure Washer) Manual No. I90134GS Revision I (01/07/2002)



TABLE OF CONTENTS

Safety Rules	2-3
Know Your Pressure Washer	4
Assembly	5-7
Operation	8-11
Product Specifications	11
Maintenance	12-14
Storage	14
Troubleshooting	15
Replacement Parts	16-19
Warranty	Last Page

EQUIPMENT DESCRIPTION

Read this manual carefully and become familiar with your pressure washer. Know its applications, its limitations and any hazards involved.

Every effort has been made to ensure that information in this manual is accurate and current. However, Generac reserves the right to change, alter or otherwise improve the product and this document at any time without prior notice.

! WARNING !

The engine exhaust from this product contains chemicals known to the State of California to cause cancer, birth defects, or other reproductive harm.

In the State of California a spark arrester is required by law (Section 4442 of the California Public Resources Code). Other states may have similar laws. Federal laws apply on federal lands. If you equip the muffler with a spark arrester, it must be maintained in effective working order.

SAFETY RULES

The safety alert symbol (▲) is used with a signal word (DANGER, CAUTION, WARNING), a pictorial and/or a safety message to alert you to hazards. **DANGER** indicates a hazard which, if not avoided, *will* result in death or serious injury. **WARNING** indicates a hazard which, if not avoided, *could* result in death or serious injury. **CAUTION** indicates a hazard which, if not avoided, *might* result in minor or moderate injury. **CAUTION**, when used **without** the alert symbol, indicates a situation that could result in equipment damage. Follow safety messages to avoid or reduce the risk of injury or death.

! WARNING



Gasoline and its vapors are extremely flammable and explosive.



Fire or explosion can cause severe burns or death.

WHEN ADDING FUEL

- Turn pressure washer OFF and let it cool at least 2 minutes before removing gas cap.
- Fill fuel tank outdoors.
- Do not overfill tank. Allow space for fuel expansion.
- Keep gasoline away from sparks, open flames, pilot lights, heat, and other ignition sources.
- Do not light a cigarette or smoke.

WHEN OPERATING EQUIPMENT

- Do not tip engine or equipment at angle which causes gasoline to spill.
- Do not spray flammable liquids.

WHEN TRANSPORTING OR REPAIRING EQUIPMENT

- Transport/repair with fuel tank EMPTY or with fuel shutoff valve OFF.

WHEN STORING GASOLINE OR EQUIPMENT WITH FUEL IN TANK

- Store away from furnaces, stoves, water heaters, clothes dryers or other appliances that have pilot light or other ignition source because they can ignite gasoline vapors.

! WARNING



Spray contact with electrical wiring can result in electrocution.

- Keep water spray away from electric wiring or fatal electric shock may result.

! WARNING



The high pressure stream of water that this equipment produces can pierce skin and its underlying tissues, leading to serious injury and possible amputation.

- Never aim the spray gun at people, animals or plants.
- Do not allow CHILDREN to operate the pressure washer.
- Never repair high pressure hose. Replace it.



Generac 2,300 PSI Pressure Washer

GENERAC®
Portable Products

by **Briggs & Stratton®**
POWER PRODUCTS

WARNING



The high pressure spray could also cause you to fall if you are too close to the cleaning surface. Pressure in a running washer builds as you climb. When you press the trigger, the recoil from the initial spray could cause you to fall. Use of pressure washer can create puddles and slippery surfaces.



- Keep spray nozzle between 8 to 24 inches away from cleaning surface.
- Be extremely careful if you must use the pressure washer from a ladder, scaffolding or any other relatively unstable location.
- The cleaning area should have adequate slopes and drainage to reduce the possibility of a fall due to slippery surfaces.
- Operate this unit on a stable surface.

WARNING



Starter and other rotating parts can entangle hands, hair, clothing, or accessories.

- Do not wear loose clothing, jewelry or anything that may be caught in the starter or other rotating parts.
- Tie up long hair and remove jewelry.

WARNING



High pressure spray can cause paint chips or other particles to become airborne.

- Always wear eye protection when you use this equipment or when you are in the vicinity where the equipment is in use.

DANGER



Running engine gives off carbon monoxide, an odorless, colorless, poison gas. Some chemicals or detergents may be harmful if inhaled or ingested, causing severe nausea, fainting or poisoning. Breathing carbon monoxide will cause nausea, fainting or death.

- Operate pressure washer **ONLY** outdoors.
- Use a respirator or mask whenever there is a chance that vapors may be inhaled.
- Read all instructions with mask so you are certain the mask will provide the necessary protection against inhaling harmful vapors.

WARNING



Unintentional sparking can result in fire or electric shock.



WHEN ADJUSTING OR MAKING REPAIRS TO YOUR HIGH PRESSURE WASHER

- Disconnect the spark plug wire from the spark plug and place the wire where it cannot contact spark plug.

CAUTION

Excessively high or low operating speeds increase risk of injury and damage to pressure washer.

- Do not tamper with governed speed.
- Do not operate the pressure washer above the rated pressure.

WARNING



Running engines produce heat. Temperature of muffler and nearby areas can reach or exceed 150°F (65°C). Severe burns can occur on contact.

- Do not touch hot surfaces.
- Allow equipment to cool before touching.

CAUTION

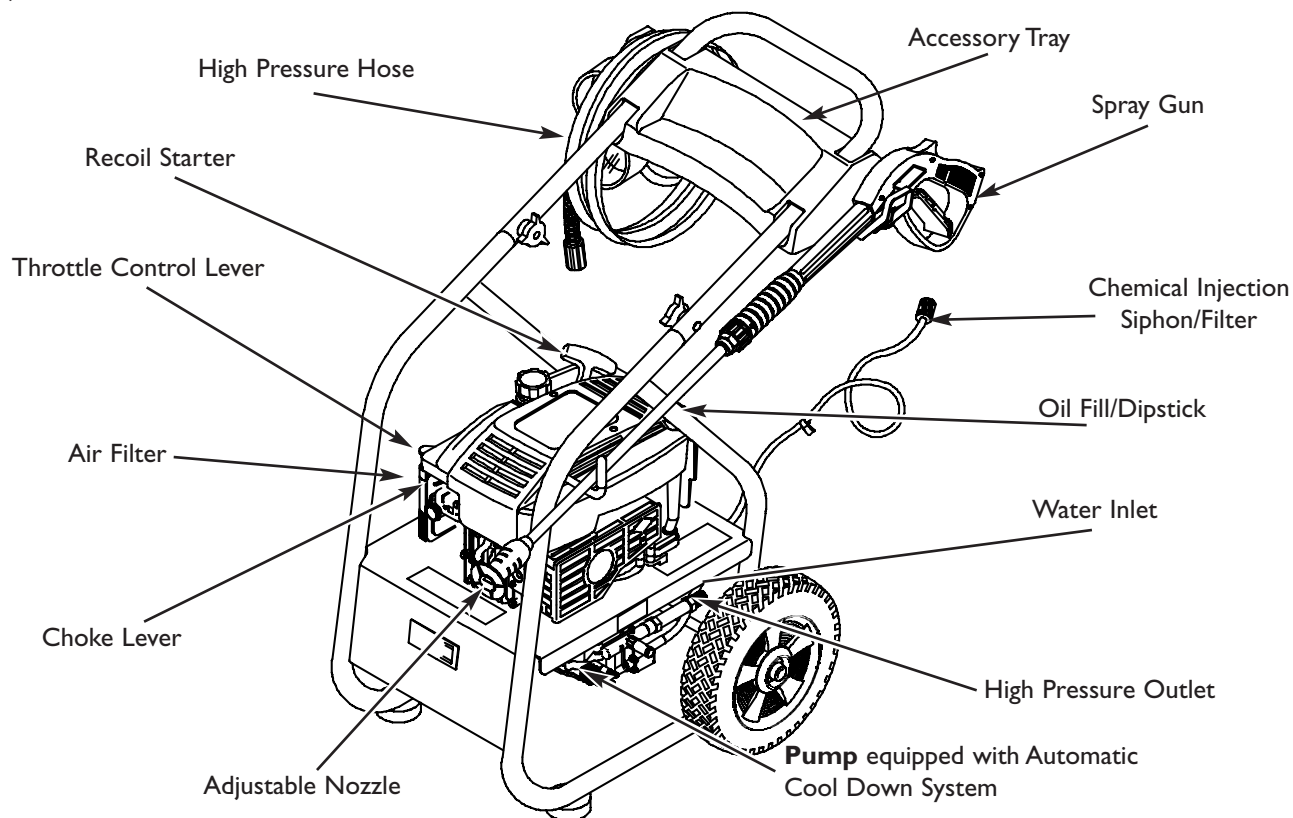
High pressure spray may damage fragile items including glass.

- Do not point spray gun at glass when in the jet spray mode.
- Never aim the spray gun at plants.

KNOW YOUR PRESSURE WASHER

Read this owner's manual and safety rules before operating your pressure washer.

Compare the illustrations with your pressure washer to familiarize yourself with the locations of various controls and adjustments. Save this manual for future reference.



Accessory Tray — Provides convenient storage for standard and optional accessories, such as brushes, turbo wands, ect.

Adjustable Nozzle — Always attached to nozzle extension. Adjustable nozzle allows you to adjust spray pressure and spray pattern.

Air Filter — Dry type filter element limits the amount of dirt and dust that gets in the engine.

Automatic Cool Down System — Cycles water through pump when water reaches 140°-145°F. Warm water will discharge from pump onto ground. This system prevents internal pump damage.

Chemical Injection Siphon/Filter — Use to siphon detergent or other pressure washer chemicals into the low pressure stream.

Choke Lever — Prepares a cold engine for starting.

High Pressure Hose — Connect one end to water pump and the other end to spray gun.

High Pressure Outlet — Connection for high pressure hose.

Oil Fill/Dipstick — Check and fill with oil here.

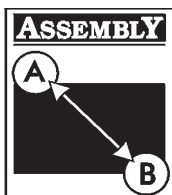
Pump — Develops high pressure.

Recoil Starter — Used for starting the engine manually.

Spray Gun — Controls the application of water onto cleaning surface with trigger device. Includes safety latch.

Throttle Control Lever — Sets engine in starting mode for recoil starter and stops a running engine.

Water Inlet — Connection for garden hose.



IMPORTANT: Read entire owner's manual before you attempt to assemble or operate your new pressure washer.

REMOVE PRESSURE WASHER FROM CARTON

- Remove the parts bag, accessories, and insert included with pressure washer.
- Slice two corners at the end of carton from top to bottom so the panel can be folded down flat, then remove all packing material.
- Roll pressure washer out of carton.

Carton Contents

Items in the carton include:

- Main Unit
- Goggles
- Handle
- Plastic Accessory Tray
- High Pressure Hose
- Spray Gun
- Nozzle Extension
- Oil Bottle
- Parts Bag (which includes the following):
 - Nozzle Cleaning Kit
 - Owner's Manual
 - Engine Manual
 - Owner's Registration Card
 - O-Ring Maintenance Kit
 - Handle Fastening Hardware Kit (which includes):
 - Carriage Bolts (2)
 - Plastic Knobs (2)
 - "J" Hook
 - Chemical Hose Clip
 - Self Tapping Screws (5)

If any of the above parts are missing or damaged, call the pressure washer helpline at **1-800-270-1408**.

PREPARING PRESSURE WASHER FOR USE

If you have any problems with the assembly of your pressure washer or if parts are missing or damaged, call the pressure washer helpline at **1-800-270-1408**.

To prepare your pressure washer for operation, you will need to perform these tasks:

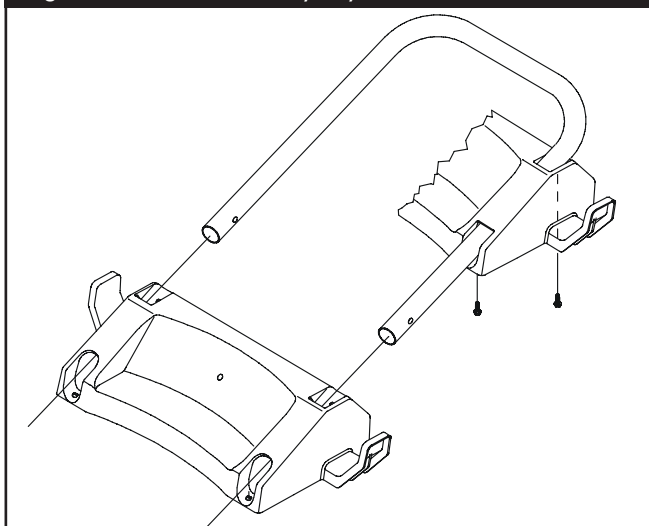
- Fill out and send in registration card.
- Attach accessory tray to handle, then attach handle to main unit.
- Add oil to engine crankcase.
- Add fuel to fuel tank.
- Connect high pressure hose to spray gun and pump.
- Connect water supply to pump.

Attach Handle and Accessory Tray

NOTE: All assembly operations given in this section will be described from the perspective of assembling the pressure washer from the rear.

- Slide the plastic accessory tray onto the handle and align the holes in the accessory tray with the holes on the handle (Figure 1).

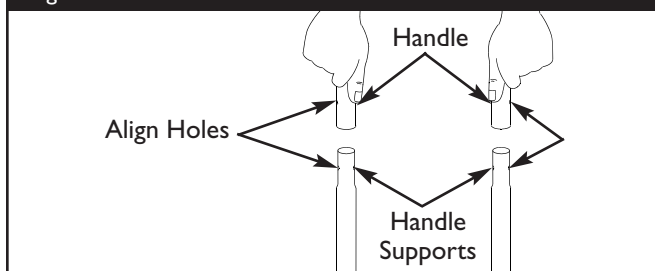
Figure 1 — Attach Accessory Tray



- Secure tray to handle with self tapping screws using a #2 phillips screwdriver. Ensure screws are tight but not crushing the plastic accessory tray.

- Place the handle onto the handle supports already connected to the main unit. Make sure the holes in the handle align with the holes on the handle supports (Figure 2).

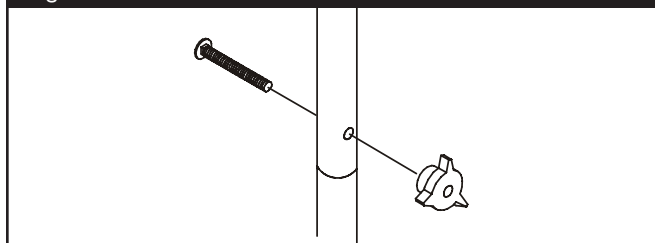
Figure 2 — Attach Handle to Base



NOTE: It may be necessary to move the handle supports from side to side in order to align the handle so it will slide over the handle supports.

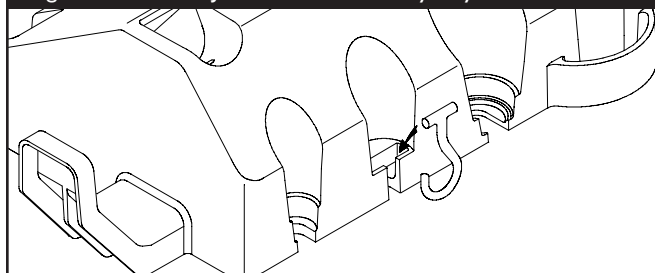
- Insert the carriage bolt through the holes from the outside of the unit and attach a plastic knob from the inside of the unit. Tighten by hand (Figure 3).

Figure 3 — Secure Handle



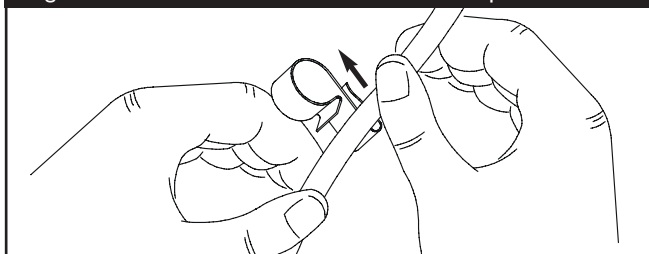
- Insert the "J" hook into the second from the left slot in the accessory tray (Figure 4).

Figure 4 — Place "J" Hook on Accessory Tray



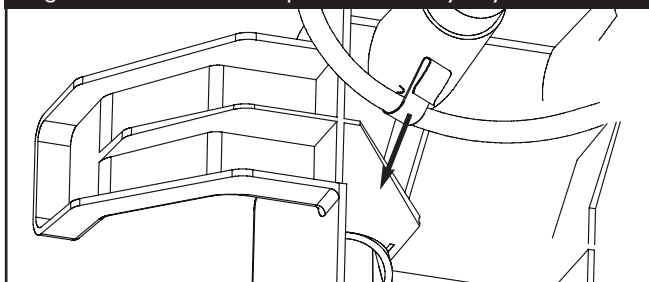
- Pinch the chemical hose that comes out of a hole in the unit's base and slide it into the metal clip, as shown in Figure 5.

Figure 5 — Slide Chemical Hose into Metal Clip



- Tilt the unit up by the handle and attach the metal clip to the rib on the left underside of the accessory tray (Figure 6). Slide the chemical hose through the metal clip so that it is tight but not kinked.

Figure 6 — Slide Metal Clip onto Accessory Tray



Add Engine Oil

IMPORTANT: Any attempt to crank or start the engine before it has been properly serviced with the recommended oil may result in an engine failure.

- Place pressure washer on a level surface.
- Refer to the engine owners manual to add recommended oil to engine.

NOTE: Check oil often during engine break-in. Refer to engine owner's manual for recommendations.

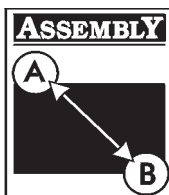
Add Gasoline



WARNING! Never fill fuel tank indoors. **Never** fill fuel tank when engine is running or hot. **Do Not** smoke when filling fuel tank.



WARNING! Never fill fuel tank completely full. Provide space for fuel expansion. Wipe away any fuel spillage from engine and equipment before starting.

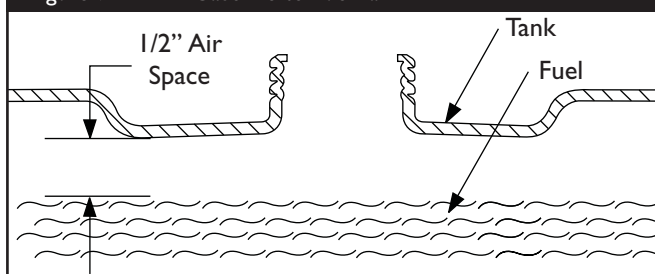


Generac 2,300 PSI High Pressure Washer



- Use fresh, clean unleaded automotive gasoline and store in approved, clean, covered containers. Use clean fill funnels. **Never** use “stale” gasoline left over from last season or gasoline stored for long periods.
- Clean area around fuel fill cap, remove cap.
- Slowly add “UNLEADED” regular gasoline to fuel tank. Use a funnel to prevent spillage. Slowly fill tank to about 1/2” below the bottom of the filler neck (Figure 7).

Figure 7 — Add Gasoline to Fuel Tank



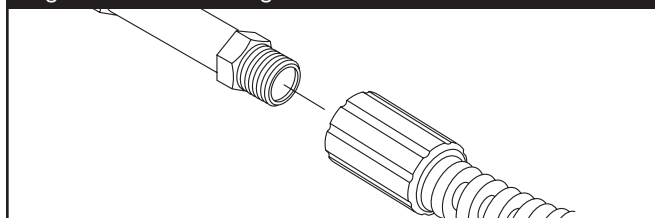
- Install fuel cap and wipe up any spilled gasoline.

Connect Hose and Water Supply to Pump

IMPORTANT: You must attach all hoses before you start the engine. Starting engine without all hoses connected and water supplied will damage the pump.

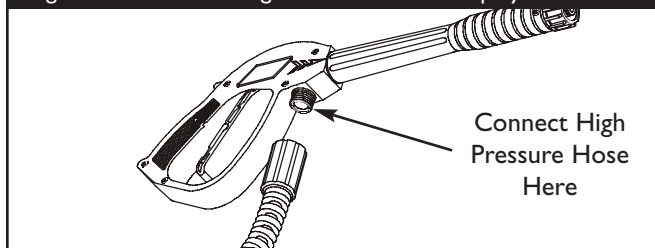
- Attach one end of the high pressure hose to the high pressure outlet on the pump (Figure 8). Tighten by hand.

Figure 8 — Connect High Pressure Hose to Water Outlet



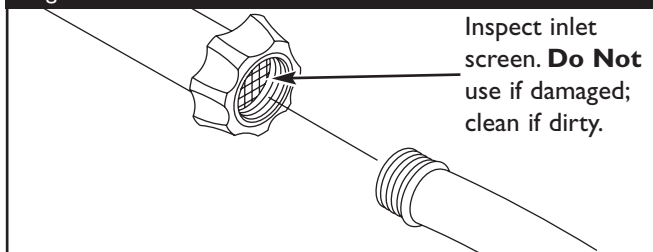
- Attach the other end of the hose to the base of the spray gun (Figure 9). Tighten by hand.

Figure 9 — Connect High Pressure Hose to Spray Gun



- Before you connect your garden hose to the water inlet, inspect the inlet screen (Figure 10). Clean the screen if it contains debris, replace it if it is damaged. **DO NOT RUN THE PRESSURE WASHER IF THE SCREEN IS DAMAGED.**

Figure 10 — Connect Garden Hose to Water Inlet



- Run water through the garden hose for 30 seconds to clean out any debris. Turn off water.

IMPORTANT: Do Not siphon standing water for the water supply. Use **ONLY** cold water (less than 100°F).

- Connect the garden hose to the water inlet. Tighten by hand (Figure 10).

CAUTION! There **MUST** be at least ten feet of unrestricted garden hose between the pressure washer inlet and any flow shut off device, such as a ‘Y’ shut-off connector or other convenience-type water shut-off valve. Damage to pressure washer resulting from disregarding this caution will not be covered by the warranty.

- Turn **ON** the water and squeeze the trigger on the spray gun to purge the pump system of air and impurities.

CAUTION! Before starting the pressure washer, be sure you are wearing adequate eye protection.

Checklist Before Starting Engine

Review the unit's assembly to confirm you have performed all of the following:

- Make sure the handle is in place and secure.
- Check that oil has been added to the proper level in the engine crankcase.
- Add the proper gasoline to fuel tank.
- Check for properly tightened hose connections.
- Check to make sure that there are no kinks, cuts, or damage to the high pressure hose.
- Provide a proper water supply at an adequate flow.
- Be sure to read “Safety Rules” and “How To Use Your Pressure Washer” before using the pressure washer.

HOW TO USE YOUR PRESSURE WASHER

If you have any problems operating your pressure washer, please call the pressure washer helpline at **1-800-270-1408**.

To Start Your Pressure Washer

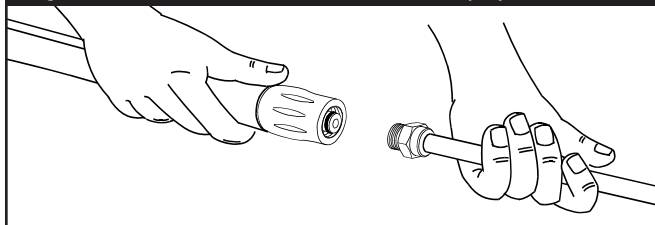
To start your pressure washer for the first time, follow these instructions step-by-step. This starting information also applies if you have let the pressure washer sit idle for at least a day.

- Place the pressure washer in an area close enough to an outside water source capable of supplying water at a flow rate greater than 2.2 gallons per minute.
- Check that the high pressure hose is tightly connected to the spray gun and to the pump. See "Preparing Pressure Washer For Use" for illustrations.
- Make sure unit is in a level position.
- Connect the garden hose to the water inlet on the pressure washer pump. **Turn ON the water.**

CAUTION! Do Not run the pump without the water supply connected and turned on. You must follow this caution or the pump will be damaged.

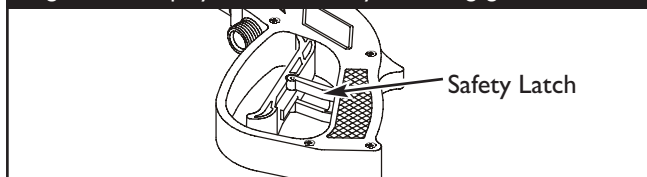
- Squeeze trigger on gun until you have a steady stream of water. This purges the pump of air and impurities.
- Attach nozzle extension to spray gun (Figure 11). Tighten by hand.

Figure 11 — Connect Nozzle Extension to Spray Gun



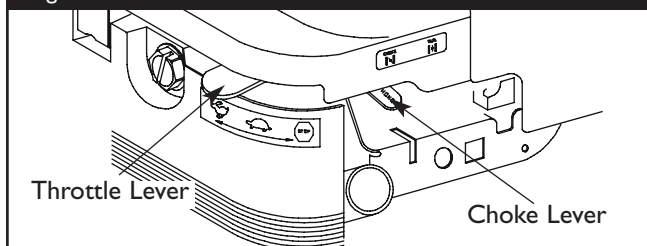
- Position the nozzle in the low pressure mode (slide nozzle forward) and squeeze the trigger on the spray gun to relieve pressure caused by turning ON the water. Water will flow out of the gun in a thin stream. Continue to hold trigger until there is a steady stream of water and no air remains in the system. Release the trigger.
- Engage the safety latch to the spray gun trigger (Figure 12).

Figure 12 — Spray Gun with Safety Latch Engaged



- Move the throttle lever to "**Fast**" position, shown here as a rabbit (Figure 13).

Figure 13 — Throttle and Choke Controls



- Move the choke lever to the "**Choke**" position (Figure 13).

NOTE: For a warm engine, be sure the choke lever is in the "**Run**" position.

- Place your left foot on the lower frame and grasp the handle as shown (Figure 14). Your unit may appear slightly different from that shown here.

Figure 14 — Recommended Engine Starting Posture



- Pull the starter grip handle lightly with your right hand until you feel some resistance, then pull briskly.



- Return the starter grip handle slowly. **Do Not** let rope “snap back” against starter.
- When engine starts, slowly move choke lever to the “**Run**” position. If engine falters, move choke lever to the “**Choke**” position, then to the “**Run**” position.
- If engine fails to start after six pulls, move choke lever to the “**Run**” position. If engine fires, but does not continue to run, move choke lever to the “**Choke**” position, then to the “**Run**” position.

NOTE: If the recoil starter is hard to pull, it may be necessary to squeeze the gun trigger to relieve internal pump pressure.

How to Stop Your Pressure Washer

- Move throttle lever on engine to “**Stop**” position.
- **Squeeze trigger on the spray gun to relieve pressure in the hose.**

NOTE: A small amount of water will squirt out when you release the pressure.

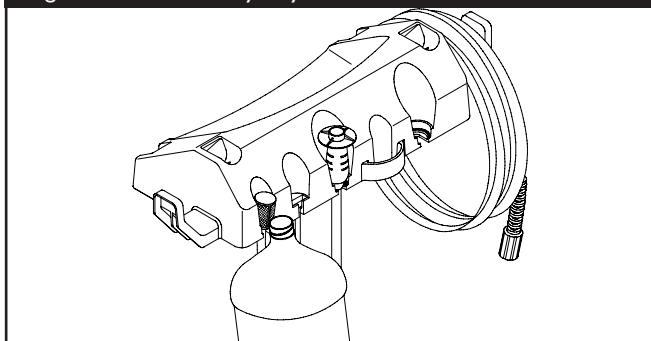
How to Use Accessory Tray

The unit is equipped with an accessory tray with places to store your nozzle extension, and slots to hold the cleaning solution bottle and the detergent siphoning filter. There are also two hooks at the ends of the accessory tray to hold your spray gun and high pressure hose.

NOTE: The extra holes in the tray are for storing a brush and a turbo wand. The brush and turbo wand are **NOT** included with your pressure washer. You can buy these items as optional accessories.

- Place the nozzle extension through the hole on the accessory tray, as shown in Figure 15.

Figure 15 — Accessory Tray



- Hang your chemical solution bottle on the “J” hook and place the detergent siphoning filter in the last slot on the left (Figure 15).
- Hang the high pressure hose on the hook on the right side of the accessory tray (Figure 15).
- Place the spray gun on the hook on the left side of the accessory tray as shown on page 4.

How to Use the Adjustable Nozzle

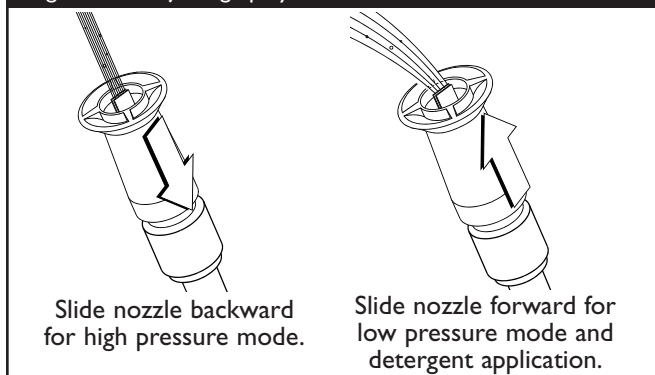
You now should know how to **START** your pressure washer and how to **STOP** it. The information in this section will tell you how to adjust the spray pattern and apply detergent or other cleaning chemicals.

CAUTION! **Never** adjust spray pattern when spraying. **Never** put hands in front of nozzle to adjust spray pattern.

The adjustable nozzle affixed to the nozzle extension permits you to adjust the spray pattern and the spray pressure, as follows:

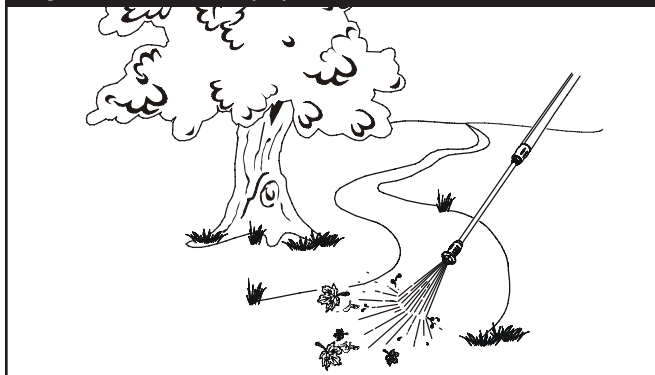
- Slide the nozzle forward to adjust the spray to low pressure mode (Figure 16). Slide the nozzle backward to achieve high pressure.

Figure 16 - Adjusting Spray Pressure



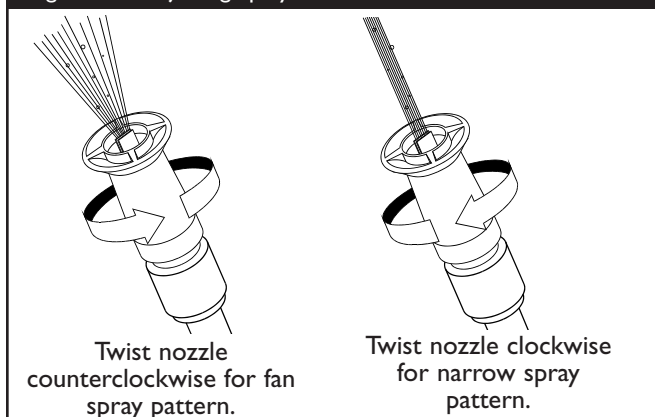
- Point the nozzle down towards a firm surface and press the trigger to test the pattern (Figure 17).

Figure 17 — Test the Spray Pattern



- Twisting the nozzle adjusts the spray pattern from a narrow pattern to a fan pattern (Figure 18).

Figure 18 - Adjusting Spray Pattern



- For most effective cleaning, keep the spray nozzle between 8 to 24 inches away from cleaning surface.
- If you get the spray nozzle too close, especially using high pressure mode, you may damage the surface being cleaned.
- **Do Not** get closer than 8 inches when cleaning tires.

Applying Detergent with the Adjustable Nozzle

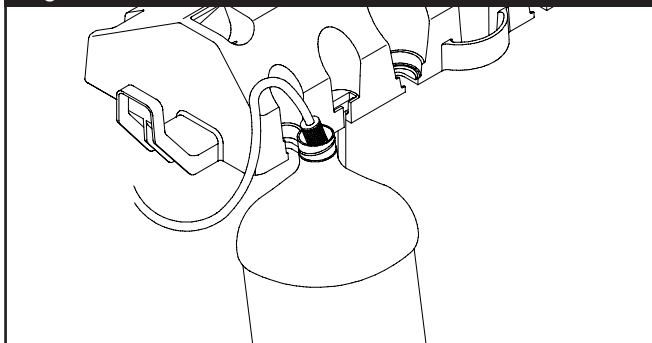
CAUTION! You must **attach all hoses** before you start the engine. Starting the engine without all the hoses connected and without the water turned ON will damage the pump.

IMPORTANT: Use soaps designed specifically for pressure washers. Household detergents could damage the pump.

To apply detergent, follow these steps:

- Review the use of adjustable nozzles.
- Prepare detergent solution as required by the manufacturer.
- Hang the detergent solution on the “J” hook attached to the accessory tray, as shown in Figure 19.

Figure 19 — Insert Filter into Container



- Place the small filter end of the detergent siphoning tube into the detergent container.

CAUTION! Keep the detergent siphoning tube from coming in contact with the hot muffler.

- Slide the adjustable nozzle forward to low pressure mode. Detergent cannot be applied with the nozzle in high pressure position.



Generac 2,300 PSI Pressure Washer



- Make sure the garden hose is connected to the water inlet. Check that the high pressure hose is connected to the spray gun and the pump. Start the engine.
- Apply the detergent to a dry surface, starting at lower portion of area to be washed and work upward, using long, even, overlapping strokes.
- Allow the detergent to “soak in” for 3-5 minutes before washing and rinsing. Reapply as needed to prevent surface from drying. **Do Not** allow the detergent to dry on (prevents streaking).

IMPORTANT: You must flush the chemical injection system after each use by placing the filter into a bucket of clean water; then run the pressure washer in low pressure for 1-2 minutes.

Pressure Washer Rinsing

WARNING! Be extremely careful if you must use the pressure washer from a ladder, scaffolding or any other relatively unstable location. Pressure in a running washer builds as you climb. When you press the trigger, the recoil from the initial spray could cause you to fall. The high pressure spray could also cause you to fall if you are too close to the cleaning surface.

For Rinsing:

- Slide the nozzle backward to high pressure and press the trigger. It will take a few seconds for the detergent to clear.

NOTE: You can also stop detergent from flowing by simply removing detergent siphon tube from bottle.

- Keep the spray gun a safe distance from the area you plan to spray.
- Apply a high pressure spray to a small area, then check the surface for damage. If no damage is found, it is okay to continue rinsing.
- Start at the top of the area to be rinsed, working down with same overlapping strokes as you used for cleaning.

Automatic Cool Down System (Thermal Relief)

If you run the engine on your pressure washer for 3-5 minutes without pressing the trigger on the spray gun, circulating water in the pump can reach a temperature between 140–145°F. When the water reaches this temperature, the automatic cool down system engages and cools the pump by **discharging the warm water onto the ground**. This system prevents internal damage to the pump.

SPECIFICATIONS

Rated Pressure 2,300 psi

Flow Rate 2.0 gallons per minute (gpm)

Detergent Use detergent approved for pressure washers

Water Supply Temp . Not to exceed 100°F

Automatic Cool Down System Will cycle when water reaches 140°-145°F

Shipping Weight 77 lbs.



GENERAL MAINTENANCE RECOMMENDATIONS

The pressure washer warranty does not cover items that have been subjected to operator abuse or negligence. To receive full value from the warranty, the operator must maintain the pressure washer as instructed in this manual.

- Some adjustments will need to be made periodically to properly maintain your pressure washer. Check the spray gun and adjustable nozzle extension assembly for wear.
- All maintenance in this manual and the engine owner's manual should be made at least once each season.
- Once a year you should clean or replace the spark plug, clean or replace the air filter. A new spark plug and clean air filter assure proper fuel-air mixture and help your engine run better and last longer. Please refer to your engine owner's manual for more details.

BEFORE EACH USE

- Check engine oil level.
- Check water inlet screen for damage.
- Check in-line filter for damage.
- Check high pressure hose for leaks.
- Check detergent siphoning tube and filter for damage.
- Check spray gun and adjustable nozzle extension assembly for leaks.
- Rinse out garden hose to flush out debris **before** connecting to pressure washer.

PRESSURE WASHER MAINTENANCE

Check and Clean Inlet Screen

Examine the screen on the water inlet. Clean it if the screen is clogged or replace it if screen is damaged.

Check High Pressure Hose

The high pressure hose can develop leaks from wear, kinking, or abuse. Inspect the hose each time before using it. Check for cuts, leaks, abrasions or bulging of cover, damage or movement of couplings. If any of these conditions exist, replace the hose immediately.



CAUTION! Water spraying from a leak is capable of injecting material into skin. Inspect hose each time before using it. **Never** repair a high pressure hose. Replace it with another hose that exceeds the maximum pressure rating of your pressure washer.

Check Detergent Siphoning Tube

Examine the filter on the detergent tube and clean if clogged. The tube should fit tightly on the barbed fitting. Examine the tube for leaks or tears. Replace the filter or tube if either is damaged.

Cleaning Detergent Siphoning Tube

If you used the detergent siphoning tube, you must flush it with clean water before stopping the engine.

- Place the chemical injection siphon/filter in a bucket full of clean water.
- Slide the adjustable nozzle extension forward to the low pressure mode.
- Flush for 1-2 minutes.
- Shut off the engine.

IMPORTANT: Simply shutting **OFF** engine will not release pressure in the system. **When the engine has shut down, squeeze the trigger on the spray gun to relieve the pressure in the hose.**

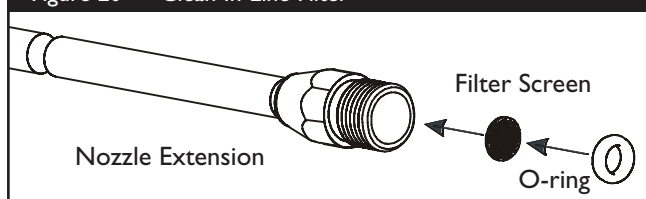
Check Gun and Adjustable Nozzle Extension

Examine the hose connection to the spray gun and make sure it is secure. Test the trigger by pressing it and making sure it "springs back" into place when you release it. Put the safety latch in the ON position and test the trigger. You should not be able to press the trigger.

Check In-Line Filter

Refer to Figure 20 and service the in-line filter if it becomes clogged, as follows:

Figure 20 — Clean In-Line Filter





1. Detach spray gun and nozzle extension from high pressure hose. Detach nozzle extension from spray gun and remove o-ring and screen from nozzle extension. Flush the screen, spray gun, and adjustable nozzle extension with clean water to clear debris.
2. If the screen is damaged, the o-ring kit contains a replacement in-line filter screen and an o-ring. If undamaged, reuse screen.
3. Place the in-line filter screen into the threaded end of the nozzle extension. Direction does not matter. Push the screen in with the eraser end of a pencil until it rests flat at the bottom of the opening. Take care to not bend the screen.
4. Place the o-ring into the recess. Push the o-ring snugly against the in-line filter screen.
5. Assemble the nozzle extension to the spray gun, as described earlier in this manual.

Purge Pump of Air and Contaminants

To remove air from the pump, follow these steps:

- Set up the pressure washer as described in “Preparing Pressure Washer For Use”. Connect the water supply and turn water on.
- Pull the trigger on the spray gun and hold.
- When the water supply is steady and constant, engage the safety latch.

To remove contaminants from the pump, follow these steps:

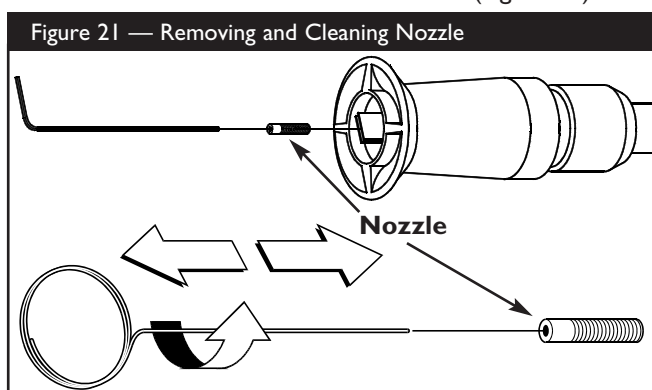
- Set up the pressure washer as described in “Preparing Pressure Washer For Use”. Connect the water supply and turn water on.
- Start the engine according to instructions in “To Start Your Pressure Washer”.
- Remove nozzle extension from spray gun.
- Squeeze the trigger on the spray gun and hold.
- When the water supply is steady and constant, engage the safety latch and attach the nozzle extension.

Nozzle Maintenance

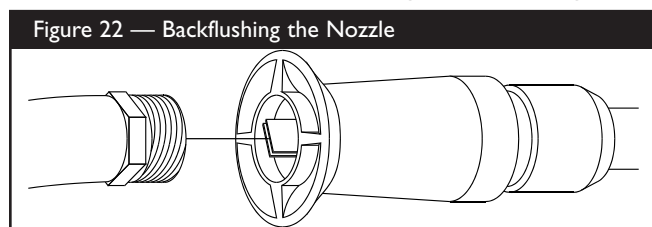
A pulsing sensation felt while squeezing the spray gun trigger may be caused by excessive pump pressure. The

principal cause of excessive pump pressure is a nozzle clogged or restricted with foreign materials, such as dirt, etc. To correct the problem, immediately clean the nozzle using the tools included with your pressure washer and follow these instructions:

1. Shut off the engine and turn off the water supply.
2. Detach the nozzle extension from the spray gun. Twist the nozzle clockwise to the stream position. Using the supplied 2mm (5/64) allen wrench, remove the nozzle from the end of the nozzle extension (Figure 21).



3. Remove the in-line filter from the other end of the nozzle extension.
4. Use the wire included in the kit (or a small paper clip) to free any foreign material clogging or restricting the nozzle (Figure 21).
5. Using a garden hose, remove additional debris by back flushing water through the nozzle extension (Figure 22). Back flush between 30 to 60 seconds. Turn the adjustable nozzle extension to stream spray and move the nozzle from low to high while flushing.



6. Reinstall the nozzle and in-line filter into the nozzle extension. Do Not overtighten the nozzle with the allen wrench.
7. Reconnect the nozzle extension to the spray gun.
8. Reconnect the water supply, turn on the water, and start the engine.



9. Test the pressure washer by operating with nozzle in the high and in the low positions.

O-Ring Maintenance

Through the normal operation of your pressure washer, o-rings, which keep the connections of the hoses and spray gun tight and leak-free, may become worn or damaged.

Provided with your pressure washer is an O-Ring Maintenance Kit which includes replacement o-rings, rubber washer and water inlet filter. Refer to the instruction sheet provided in the kit to service your unit's o-rings. Note that not all of the parts in the kit will be used on your unit.

To remove a worn or damaged o-ring:

- Use a small flathead screwdriver to get underneath the o-ring and pry it off.

ENGINE MAINTENANCE

See the engine owner's manual for instructions on how to properly maintain the engine.



CAUTION! Avoid prolonged or repeated skin contact with used motor oil. Used motor oil has been shown to cause skin cancer in certain laboratory animals. Thoroughly wash exposed areas with soap and water.

KEEP OUT OF REACH OF CHILDREN. DON'T POLLUTE. CONSERVE RESOURCES. RETURN USED OIL TO COLLECTION CENTERS.

PREPARING THE UNIT FOR STORAGE

Water should not remain in the unit for long periods of time. Sediments or minerals can deposit on pump parts and "freeze" pump action. If you do not plan to use the pressure washer for more than 30 days, follow this procedure:

1. Flush detergent siphoning tube by placing the filter into a pail of clean water while running pressure washer in low pressure mode (adjustable nozzle in the forward position). Flush for one to two minutes.
2. Shut off the engine and let it cool, then remove high pressure and garden hoses. Disconnect spark plug wire from spark plug.

3. Empty the pump of all pumped liquids by pulling the recoil handle about 6 times. This should remove most of the liquid in the pump.
4. Use Generac brand PumpSaver to prevent corrosion build up and freezing of pump.
5. Store unit in a clean, dry area.

Protecting the Pump

To protect the pump from damage caused by mineral deposits or freezing, use the Generac PumpSaver to treat pump. This prevents freeze damage and lubricates pistons and seals.

NOTE: Generac PumpSaver, model number 01559, is available as an optional accessory. It is not included with the pressure washer.

CAUTION! You must protect your unit from freezing temperatures. Failure to do so will permanently damage your pump and render your unit inoperable. Freeze damage is not covered under warranty.



CAUTION! Read and follow all cautions and warnings on the PumpSaver can label. Always wear eye protection when using PumpSaver.

To use PumpSaver, make sure the pressure washer is turned off and disconnected from supply water. Read and follow all instructions and warnings given on the PumpSaver container.

NOTE: PumpSaver will drip from pump after treatment and will stain wood and concrete.

NOTE: If PumpSaver is not available, draw RV antifreeze (non-alcohol) into the pump by pouring the solution into a 3-foot section of garden hose connected to inlet adapter and pulling recoil handle twice.

STORING THE ENGINE

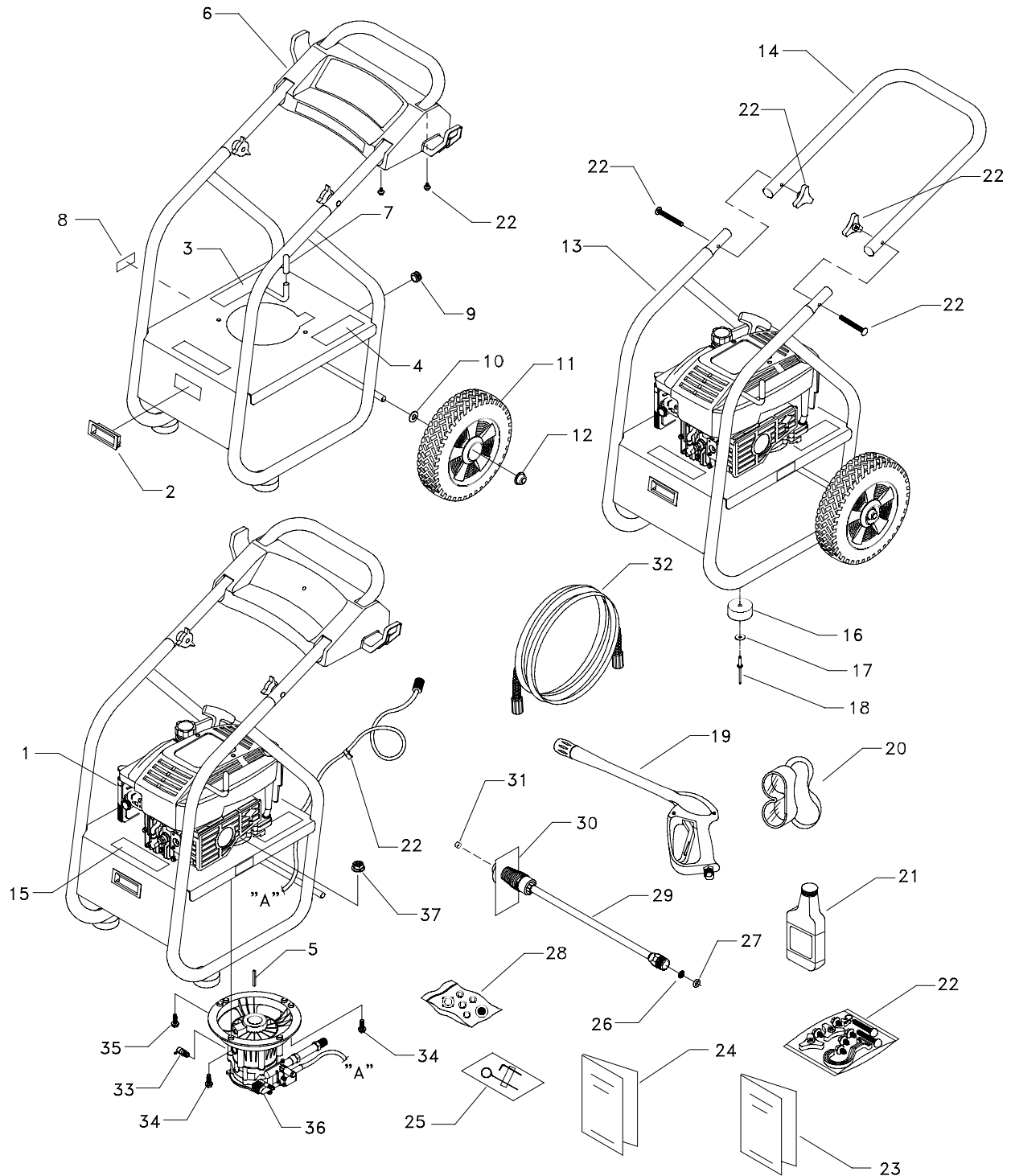
See the engine owner's manual for instructions on how to properly prepare the engine for storage.

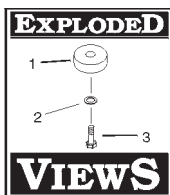


TROUBLESHOOTING

Problem	Cause	Correction
Pump has following problems: failure to produce pressure, erratic pressure, chattering, loss of pressure, low water volume.	<ol style="list-style-type: none"> 1. Nozzle in low pressure mode. 2. Water inlet is blocked. 3. Inadequate water supply. 4. Inlet hose is kinked or leaking. 5. Clogged inlet hose strainer. 6. Water supply is over 100°F. 7. High pressure hose is blocked or leaks. 8. Gun leaks. 9. Nozzle is obstructed. 10. Pump is faulty. 	<ol style="list-style-type: none"> 1. Pull nozzle backward for high pressure mode. 2. Clear inlet. 3. Provide adequate water flow. 4. Straighten inlet hose, patch leak. 5. Check and clean inlet hose strainer. 6. Provide cooler water supply. 7. Clear blocks in outlet hose. 8. Replace gun. 9. Clean nozzle. 10. Contact Generac service facility.
Detergent fails to mix with spray.	<ol style="list-style-type: none"> 1. Detergent siphoning tube is not submerged. 2. Chemical filter is clogged. 3. Dirty in-line filter. 4. Nozzle is in high pressure mode. 	<ol style="list-style-type: none"> 1. Insert detergent siphoning tube into detergent. 2. Clean or replace filter/detergent siphoning tube. 3. See "Check In-Line Filter" on page 12. 4. Push nozzle forward for low pressure mode.
Engine runs good at no-load but "bogs" when load is added.	Engine speed is too slow.	Move throttle control to FAST position. If engine still "bogs down", contact Briggs service facility.
Engine will not start; or starts and runs rough.	<ol style="list-style-type: none"> 1. Dirty air cleaner. 2. Out of gasoline. 3. Stale gasoline. 4. Spark plug wire not connected to spark plug. 5. Bad spark plug. 6. Water in gasoline. 7. Overchoking. 8. Excessively rich fuel mixture. 9. Intake valve stuck open or closed. 10. Engine has lost compression. 	<ol style="list-style-type: none"> 1. Clean or replace air cleaner. 2. Fill fuel tank. 3. Drain gas tank; fill with fresh fuel. 4. Connect wire to spark plug. 5. Replace spark plug. 6. Drain gas tank; fill with fresh fuel. 7. Open choke fully and crank engine. 8. Contact Briggs service facility. 9. Contact Briggs service facility. 10. Contact Briggs service facility.
Engine shuts down during operation.	Out of gasoline.	Fill fuel tank.
Engine lacks power.	Dirty air filter.	Replace air filter.
Engine "hunts" or falters.	Choke is opened too soon.	Move choke to halfway position until engine runs smoothly.

EXPLODED VIEW — UNIT





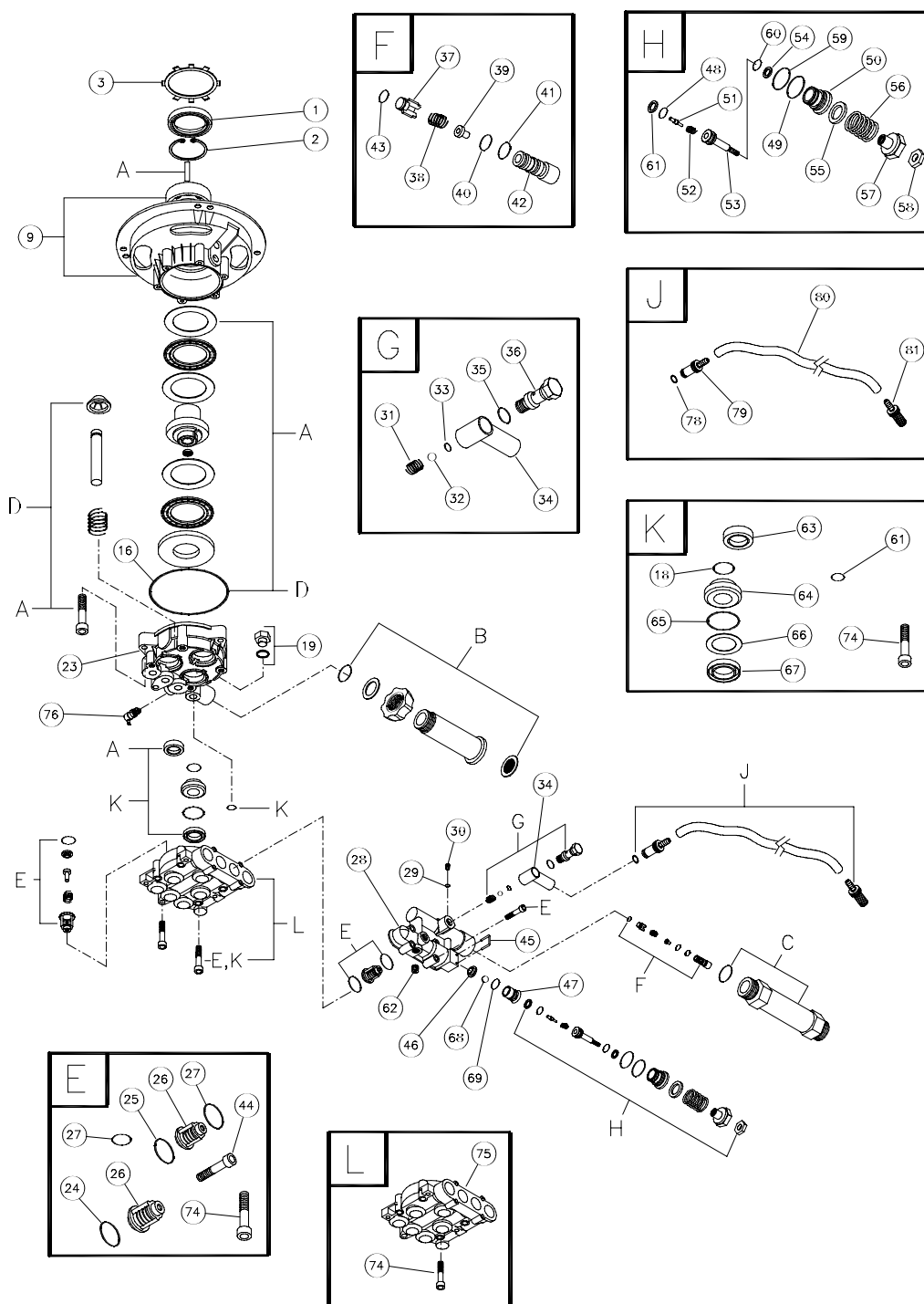
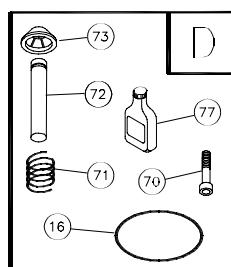
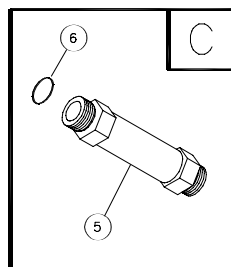
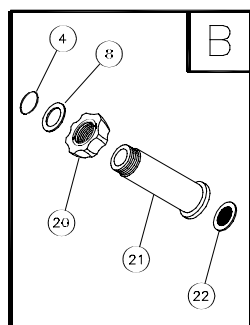
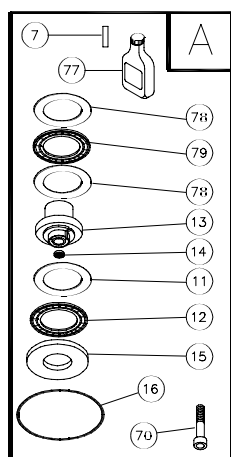
Generac 2,300 PSI Pressure Washer

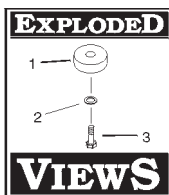


PARTS LIST — UNIT

Item	Part #	Qty.	Description
1	NSP	1	ENGINE
2	187878GS	1	HANDLE, Lift
3	187915GS	1	DECAL, Warning/Decal
4	187916GS	1	DECAL, Start Instructions
5	23139GS	1	KEY
6	190143GS	1	DECALS/BILLBOARD
7	B2516GS	1	CAP, Vinyl, Black
8	187952GS	1	DECAL, Cool Down
9	30809GS	1	GROMMET, Chem Hose
10	49808GS	2	WASHER, M12 Flat
11	B2142GS	2	TIRE, 2" X 9" Black Mag
12	190146GS	2	PUSHNUT, 1/2"
13	A187619GS	1	BASE, VSPW
14	A187602GS	1	HANDLE, PW
15	187918GS	1	DECAL, Quick Reference
16	27007GS	2	MOUNT, Rubber Foot
17	71693GS	2	WASHER, Flat
18	188194GS	2	RIVET, Blind
19	190132GS	1	GUN, High Pressure
20	87815GS	1	GOGGLES, Safety
21	BB3061BGS	1	OIL, 20oz
22	187623GS	1	KIT, Handle Hardware
23	190134GS	1	MANUAL, Owners
24	B3356GS	1	MANUAL, B & S Engine
25	188287GS	1	KIT, Nozzle Cleaning
26	B4224GS	1	SCREEN, Inlet
27	97837GS	1	O-RING, Hi - Pressure
28	B5830GS	1	KIT, O-Ring Maintenance
29	B3335GGS	1	WAND, Adjustable Nozzle
30	97566GS	1	HANG TAG, Nozzle
31	190605GS	1	NOZZLE, .95 Replcmnt
32	B5642GS	1	HOSE, 1/4" X 25'
33	21783GS	1	VALVE, Thermal Relief
34	48750GS	2	SHCS, M8 x 50mm
35	A2013GS	1	SHCS, M8 x 70mm
36	189970GS	1	PUMP, Assembly (see pages 18-19)
37	52858GS	3	NUT, M8 - 1.25 Lock

EXPLODED VIEW — PUMP





PARTS LIST — PUMP

Item	Part #	Qty.	Description	Item	Part #	Qty.	Description
1	190623GS	1	SEAL, 35 x 50 x 7	27	4	O-RING, 15 x 2
2	190624GS	1	SNAP RING, 35 x 1.5	44	4	SCREW, M5 x 30
3	190569GS	1	RETAINING RING	74	5	SCREW, M6 x 35
9	190625GS	1	ENGINE ADAPTER & BEARING	F	190592GS	0	KIT, INLET CHECK
16	190572GS	1	O-RING, 80.60 x 2.62	37	1	VALVE, Non-Return
19	190571GS	1	CAP, Oil	38	1	SPRING, 9.2 x 10 x 0.8
23	190626GS	1	CARTER	39	1	INJECTION NOZZLE, M6 Flat
28	190627GS	1	MANIFOLD	40	1	O-RING, 8 x 2
29	190575GS	1	O-RING, 4 X 2	41	1	O-RING, 9.25 x 1.78
30	190576GS	1	SCREW	42	1	INJECTION NIPPLE
34	190577GS	1	CONNECTION, Chemical Inlet	43	1	O-RING, 5 x 2
45	190578GS	1	PIN	G	190593GS	0	KIT, CHEMICAL INJECTION
46	190629GS	1	VALVE, Seat Plate, Plastic	31	1	SPRING, 3.5
47	190769GS	1	VALVE, Seat, Stainless	32	1	BALL, 3/16"
62	190581GS	1	CAP, 1/8	33	1	O-RING, 3.69 x 1.78
68	190582GS	1	BALL, 7mm Stainless Steel	34	1	CONNECTION, Chemical Inlet
69	190584GS	1	O-RING, 9.25 x 1.78	35	1	O-RING, 7.66 x 1.78
76	21783GS	1	THERMO RELIEF	36	1	SCREW, Fitting
77	190586GS	1	OIL BOTTLE	H	190594GS	0	KIT, UNLOADER STEM
A	190709GS	0	KIT, WOBBLE PLATE BEARING	48	1	BACK RING, 9 x 12 x 1.5
7	1	SPACER, Plastic	49	1	O-RING, 14 x 1.78
11	1	FLAT BEARING DISC, 40 x 60-I	50	1	VALVE, By Pass, Brass
12	1	ROLLER BEARING, 40 x 60	51	1	PISTON
13	1	WOBBLE PLATE, 7/8 x 8.0	52	1	SPRING, Easy Start
14	1	CAP	53	1	PISTON, Body
15	1	FLAT BEARING DISC, 60 x 30	54	1	RING, Back, 6 x 9
16	1	O-RING, 80.60 x 2.62	55	1	SPACER
70	3	SCREW, M6 x 30	56	1	SPRING, Regulation Press
77	1	OIL BOTTLE	57	1	NUT, Regulation Press
78	2	FLAT BEARING DISC, 45 x 65 x 1	58	1	NUT
79	1	ROLLER BEARING, 45 x 65	59	1	O-RING, 12.42 x 1.78
B	190632GS	0	KIT, WATER INLET, ALUM	60	1	O-RING, 6.07 x 1.78
4	1	O-RING, 14 x 2	61	1	O-RING, 8.73 x 1.78
8	1	WASHER, 18 x 22 x 1.5	J	189971GS	0	KIT, CHEMICAL HOSE
20	1	GARDEN HOSE w/ FINGER GRIP	78	1	O-RING, 6.75 x 1.78
21	1	EXTENSION, INLET	79	1	TUBE, Inlet Support
22	1	WASHER w/ FILTER 24 x 15 x 3.5	80	1	TUBE, Chemical
C	190634GS	0	KIT, OUTLET, ALUM	81	1	FILTER
5	1	OUTLET EXTENTION, M22-G3/8	K	190711GS	0	KIT, SEAL SET
6	1	O-RING, 13 x 2	18	3	O-RING, 11.11 x 1.78
D	190710GS	0	KIT, PISTON	61	1	O-RING, 8.73 x 1.78
16	1	O-RING, 80.60 x 2.62	63	3	SEAL, 14 x 22 x 5
70	3	SCREW, M6 x 30	64	3	BRASS BOUCHING
71	3	SPRING	65	3	O-RING, 23.52 x 1.78
72	3	PISTON, 14 Stainless Steel	66	3	SEAL, 14 x 22 x 1.5
73	3	SPRING PLATE	67	3	SEAL, H.P.
77	1	OIL BOTTLE	74	5	SCREW, M6 x 35
E	190591GS	0	KIT, CHECK VALVES	L	190596GS	0	KIT, HEAD BRASS
24	3	O-RING, 12 x 2	74	5	SCREW, M6 x 35
25	3	O-RING, 12.42 x 1.78	75	1	HEAD, Pump
26	6	ASSY., Valve Group				

NOTE: Item letters A - L are service kits and include all parts shown within the box.