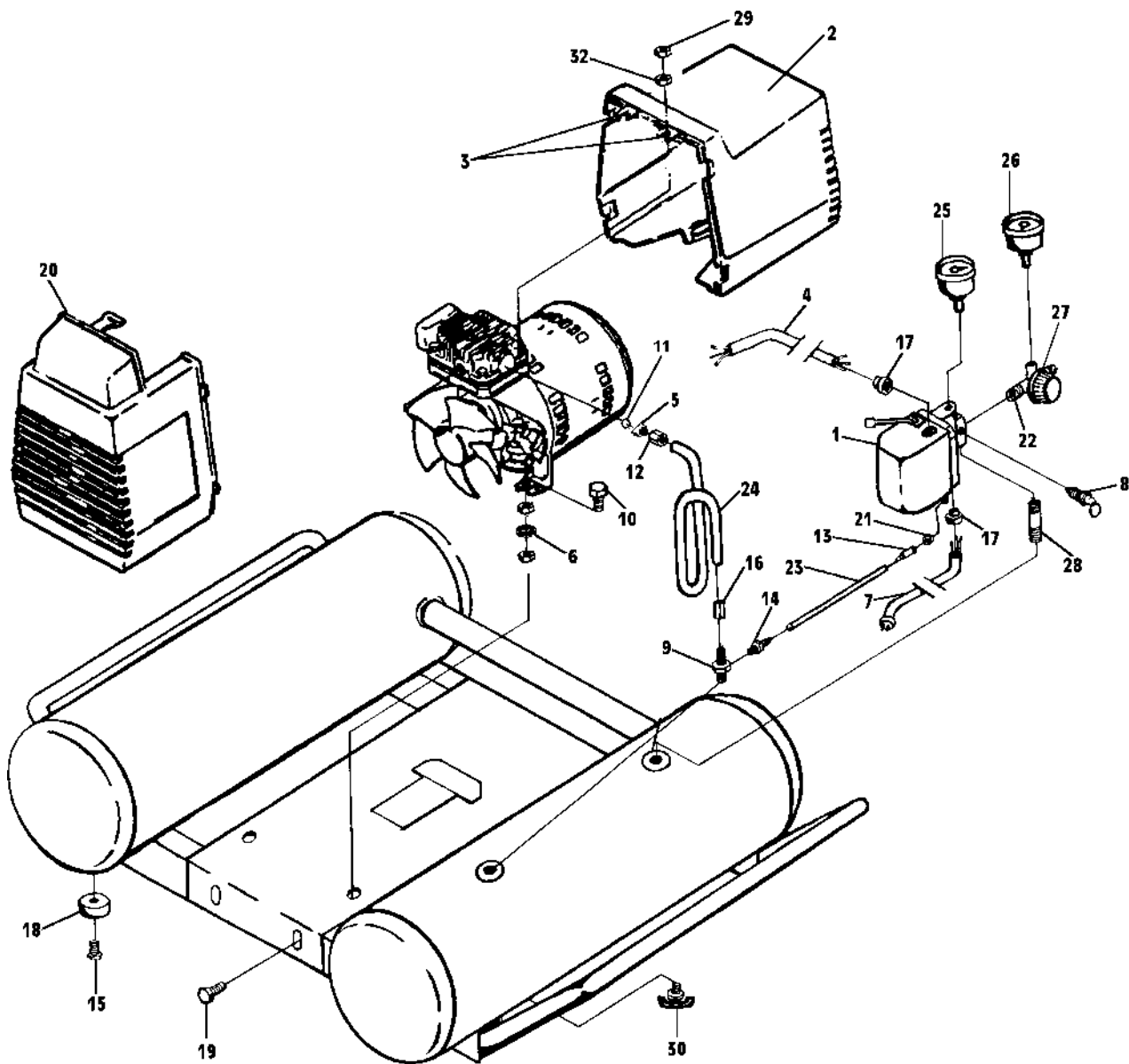


150E4TTD-1



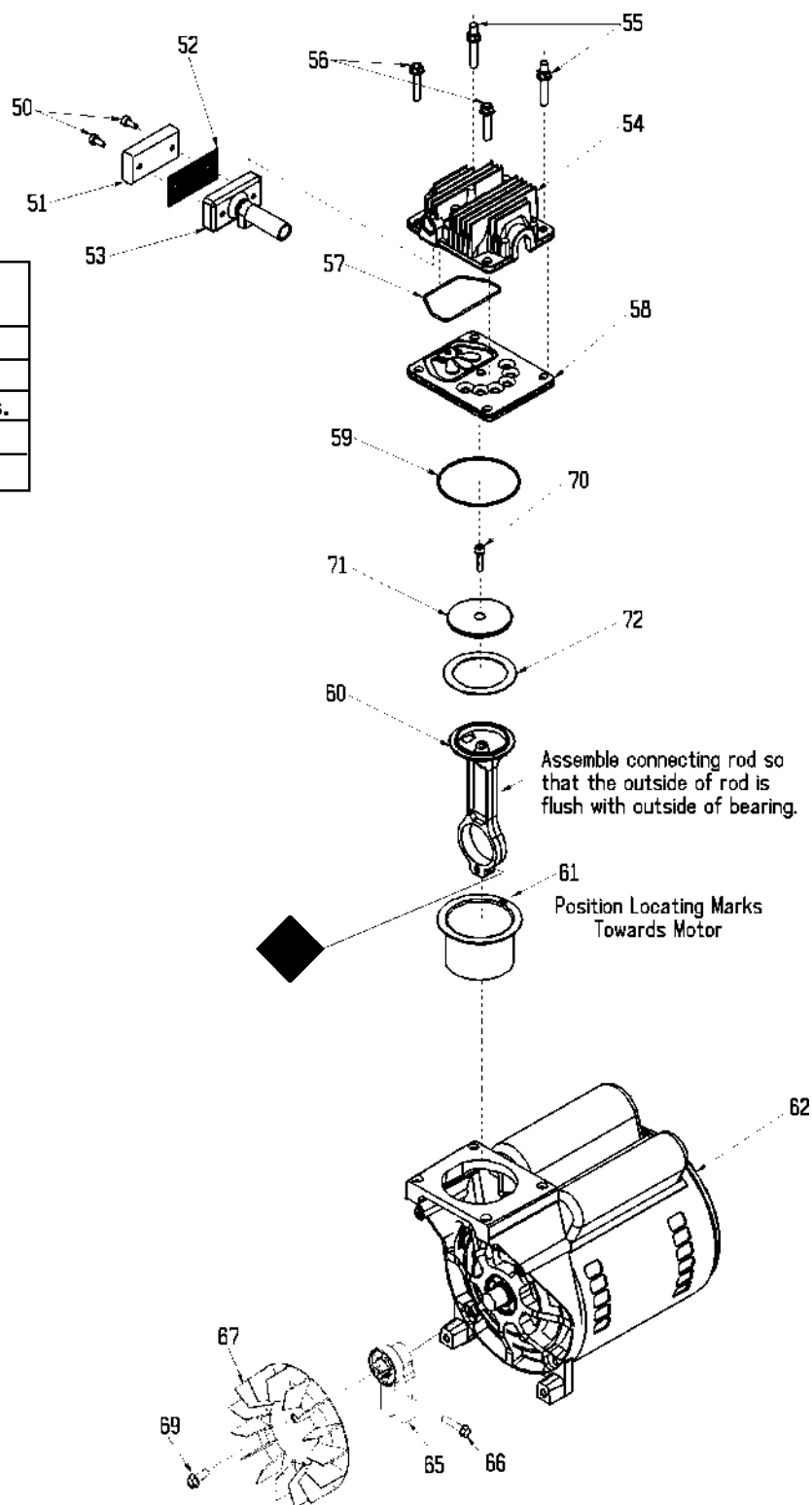
| Key# | Torque Diagram |
|------|-------------------------|
| 5 | Torque 100-120 in. lbs. |
| 10 | Torque 90-105 in. lbs. |
| 15 | Torque Snug |
| 16 | Torque 100-120 in. lbs. |
| 19 | Torque 75-90 in. lbs. |
| 29 | Torque 50-60 in. lbs. |

150E4TTD-1 (cont'd)

| KEY NO. | PART NUMBER | DESCRIPTION |
|--------------------|--------------------|-----------------------------------------------|
| 1 | CAC-4332-2 | Pressure Switch/Manifold |
| 2 | DAC-4078 | Rear Shroud Assy. (Includes 2 each Key No. 3) |
| 3 | CAC-1121 | Shroud Bracket (Included with Key No. 2) |
| 4 | CAC-4241-1 | Motor Cord |
| 5 | SSP-6050 | Male Connector |
| 6 | SSW-7462 | Spacer (4 used) |
| 7 | SUDL-403-1 | Power Cord |
| 8 | TIA-4150 | Safety Valve |
| 9 | CAC-4290-3 | Check Valve |
| 10 | SSF-928 | Screw (2 used) |
| 11 | SSG-3105 | Oil Ring |
| 12 | SSP-7821-1 | Nut Sleeve Assy. |
| 13 | SSP-9013 | Tubing Insert |
| 14 | SSP-6088 | Barb Fitting |
| 15 | SSF-928 | Screw (4 used) |
| 16 | SSP-7813 | Nut Sleeve Assy. |
| 17 | SSW-7367 | Strain Relief (2 used) |
| 18 | SST-5314-1 | Rubber Bumper (4 used) |
| 19 | SSF-925 | Screw (4 used) |
| 20 | DAC-233 | Front Shroud |
| 21 | SSP-7811 | Nut Sleeve Assy. |
| 22 | SS-1286 | Nipple |
| 23 | DAC-245 | Pressure Relief Tube |
| 24 | AC-0332 | Outlet Tube |
| 25 | GA-370 | Gauge |
| 26 | GA-369 | Gauge |
| 27 | CAC-4296-1 | Regulator |
| 28 | SS-2071 | Nipple |
| 29 | SS-655-ZN | Nut (2 used) |
| 30 | SS-2707 | Drain Valve (2 used) |
| 32 | SSN-60-ZN | Washer (2 used) |

150E4TTD-1 (cont'd)

| KEY NO. | TORQUE |
|---------|---------------------|
| 55 | 7 to 10 Ft. Lbs. |
| 56 | 7 to 10 Ft. Lbs. |
| 66 | 100 to 120 In. Lbs. |
| 69 | 80 to 100 In. Lbs. |
| ◆ | 42 to 48 In. Lbs. |



150E4TTD-1 (cont'd)

| KEY NO. | PART NUMBER | DESCRIPTION |
|--------------------|--------------------|--------------------------------------------------------------|
| + 50 | --- | Air filter fastener (2 used) |
| 51 | DAC-143 | Air filter |
| + 52 | --- | Muffler screen |
| + 53 | --- | Intake muffler |
| 54 | AC-0039 | Head |
| 55 | SSF-589 | Stud 1/4"-20 x 1 1/4" |
| 56 | SSF-927 | Screw 1/4-20 x 1 1/4" |
| *✓ 57 | ACG-45 | O-Ring |
| 58 | AC-0032 | Valve plate assembly (includes valves, restrictors & screws) |
| *✓ 59 | SSG-8156 | O-ring |
| * 60 | --- | Connecting rod assembly |
| * ✓ 61 | --- | Cylinder sleeve (position locating mark toward motor) |
| 62 | M0-3025-2 | Motor |
| 65 | AC-0140 | Eccentric Flywheel Bearing Assy. |
| 66 | SSF-990 | Screw 1/4-20 unc-2A |
| 67 | AC-0108 | Fan |
| 69 | SSF-586 | Screw 1/4-20 unc x .75 |
| * ✓ 70 | SSF-3158-1 | Screw 10-24 X .75 T25 Torx |
| * 71 | --- | Compression Ring Connecting Rod Cap |
| * ✓ 72 | --- | Compression Ring |

NOT ILLUSTRATED

| | |
|----------------|-----------------------|
| KK-4315 | Pressure Relief Valve |
| MG2-OFTANK-4A | Owners Manual |
| MP2-150E4TTD-1 | Parts Manual |

- + Keys 50, 52 and 53 can only be purchased as part of KK-4977 (also includes Key #51).
- * Keys 57, 59, 60, 61, 70, 71, and 72 are purchased as part of KK-4835 piston/cylinder kit.
- ✓ Keys 61, 70 and 72 can be purchased as part of K-0058 cylinder sleeve/compression ring kit.