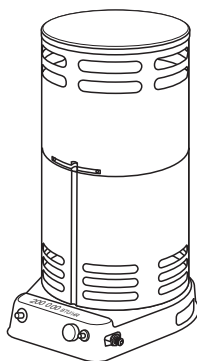


DESATM

HEATING PRODUCTS

PROPANE CONSTRUCTION CONVECTION HEATER OWNER'S MANUAL



**VARIABLE 40-80,000 BTU/HR
75-200,000 BTU/HR**

IMPORTANT: Read and understand this manual before assembling, starting or servicing heater. Improper use of heater can cause serious injury. Keep this manual for future reference.

⚠ GENERAL HAZARD WARNING:

Failure to comply with the precautions and instructions provided with this heater, can result in death, serious bodily injury and property loss or damage from hazards of fire, explosion, burn, asphyxiation, carbon monoxide poisoning and/or electrical shock.

Only persons who can understand and follow the instructions should use or service this heater.

If you need assistance or heater information such as an instructions manual, labels, etc. contact the manufacturer.


TABLE OF CONTENTS


Safety	2	Maintenance	7
Unpacking	3	Troubleshooting	8
Product Identification	3	Specifications	9
Ventilation	3	Replacement Parts	9
Theory of Operation	3	Technical Services	9
Propane Supply	4	Accessories	9
Installation	4	Parts	10
Operation	5	Warranty	14
Storage	7		

Save this manual for future reference.

For more information, visit www.desatech.com

SAFETY

 **WARNING:** This product contains and/or generates chemicals known to the State of California to cause cancer or birth defects or other reproductive harm.

 **WARNING:** Fire, burn inhalation and explosion hazard. Keep solid combustibles, such as building materials, paper or cardboard, a safe distance away from the heater as recommended by the instructions. Never use the heater in spaces which do or may contain volatile or airborne combustibles or products such as gasoline, solvents, paint thinner, dust particles or unknown chemicals.

 **WARNING:** Not for home or recreational vehicle use.

The heater is designed for use as a construction heater in accordance with ANSI Z83.7•CGA 2.14. Other standards govern the use of fuel gases and heating products for specific uses. Your local authority can advise you about these. The primary purpose of construction heaters is to provide temporary heating of buildings under construction, alteration or repair. Properly used, the heater provides safe economical heating. Products of combustion are vented into the area being heated.

We cannot foresee every use which may be made of our heaters. **CHECK WITH YOUR LOCAL FIRE SAFETY AUTHORITY IF YOU HAVE QUESTIONS ABOUT HEATER USE.**

Carbon Monoxide Poisoning: Some people are more affected by carbon monoxide than others. Early signs of carbon monoxide poisoning resemble the flu, with headaches, dizziness and/or nausea. If you have these signs, the heater may not be working properly. **Get fresh air at once!** Check for proper ventilation and have heater serviced.

Propane Gas: Propane gas is odorless. An odor-making agent is added to propane gas. The odor helps you detect a propane gas leak. However, the odor added to propane gas may fade. Propane gas may be present even though no odor exists.

Make certain you read and understand all warnings. Keep this manual for reference. It is your guide to safe and proper operation of this heater.

1. Install and use heater with care. Follow all local ordinances and codes. In the absence of local ordinances and codes, refer to the *Standard for Storage and Handling of Liquefied Petroleum Gas, ANSI/NFPA 58 Natural Gas Installation Code, CAN/CGA B149.2*. This instructs on the safe storage and handling of propane gases.
2. **State of Massachusetts:** The installation must be made by a licensed plumber or gas fitter in the Commonwealth of Massachusetts.
3. Use only propane gas set up for vapor withdrawal.
4. Provide adequate ventilation. Before using heater, provide at least a 2.5 square foot (0.232 m²) (80,000 Btu/Hr heaters) or 6.0 square foot (0.557 m²) (200,000 Btu/Hr heaters) opening of fresh, outside air.
5. For indoor use only. Do not use heater outdoors.
6. Keep heater away from strong drafts, wind, water spray, rain or dripping water.
7. Do not use heater in occupied dwellings or in living or sleeping quarters.
8. Do not use heater in a basement or below ground level. Propane gas is heavier than air. If a leak occurs, propane gas may sink to the lowest possible level.
9. Keep appliance area clear and free from combustible materials, gasoline, paint thinner and other flammable vapors and liquids. Dust is combustible. Do not use heater in areas with high dust content.
10. Minimum heater clearances from combustibles: **80,000 Btu/Hr heaters**
Sides: 3 feet (91 cm); Top: 6 feet (1.83 m)
100-200,000 Btu/Hr heaters
Sides: 3 feet (91 cm); Top: 7 feet (2.1 m)
11. Keep heater at least six feet (1.83 m) from propane tank(s).
12. Keep propane tank(s) below 100° F (37.8° C).

SAFETY

Continued

13. Use only the hose and factory preset regulator provided with the heater.
14. Check heater for damage before each use. Do not use a damaged heater.
15. Check hose before each use of heater. If highly worn or cut, replace with hose specified by manufacturer before using heater.
16. Do not alter heater. Keep heater in its original state.
17. Do not use heater if altered.
18. Locate heater on stable and level surface if heater is hot or operating.
19. Not intended for use on finished floors. This includes, but is not limited to carpet, rugs, vinyl, treated and synthetic wood flooring.
20. Never block air inlet (bottom of shell) or air outlet (around top of shell) of heater.
21. Do not leave heater unattended.
22. Keep children and animals away from heater.
23. Always run heater with control knob at LO, MED or HI settings. Never set control knob between OFF, LO, MED or HI settings.
24. Never move, handle or service a hot or operating heater. Severe burns may result. You must wait 15 minutes after turning heater off.
25. To prevent injury, wear gloves when handling heater.
26. Never attach duct work to heater.
27. Turn off propane supply to heater when not in use.
28. Use only original replacement parts. This heater must use design-specific parts. Do not substitute or use generic parts. Improper replacement parts could cause serious or fatal injuries.

UNPACKING

1. Remove all packing items applied to heater for shipment. Keep plastic cover caps (attached to inlet connector and hose/regulator assembly) for storage.
2. Remove all items from carton.
3. Check heater for any shipping damage. If heater is damaged call DESA Heating, LLC at 1-866-672-6040 for replacement parts before returning to dealer.

PRODUCT IDENTIFICATION

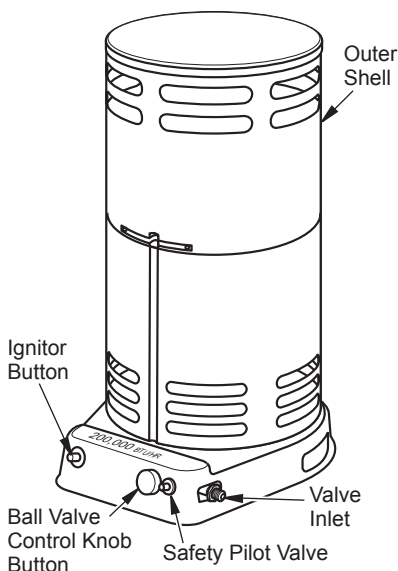


Figure 1 - 200,000 Btu Model Shown

VENTILATION

WARNING: Provide at least a 2.5 square foot (0.23 m²) (80,000 Btu/Hr) or 6 square foot (0.557 m²) (200,000 Btu/Hr) opening of fresh, outside air while running heater. If proper fresh, outside air ventilation is not provided, carbon monoxide poisoning can occur. Provide proper fresh, outside air ventilation before running heater.

THEORY OF OPERATION

The Fuel System: The hose/regulator assembly attaches to the propane gas supply. This provides fuel to the heater.

The Ignition System: The piezo ignitor lights the pilot.

The Automatic Control System: This system causes the heater to shut down if the flame goes out.

PROPANE SUPPLY

You must provide propane gas and propane tank(s).

Use this heater only with a propane vapor withdrawal supply system. See Chapter 5 of the *Standard for Storage and Handling of Liquefied Petroleum Gas, ANSI/NFPA 58* and/or *CAN/CGA B149.2*. Your local library or fire department will have this booklet.

This heater will operate with a 20 lb (9.07 kg) propane tank. However, you can only operate it in the LOW position during mildly cool weather for a very short time. At higher heat settings or during colder weather, you must use larger tanks.

The amount of propane gas ready for use from propane tanks varies. Two factors decide this amount.

1. The amount of propane gas in tank(s)
2. The temperature of tank(s)

The chart below shows the minimum number of 100 b (45 kg) tanks needed to run the heater. Connect tanks together with a manifold.

Average Temperature At Tank Location	Number Of Tanks
(80,000 Btu/Hr models)	
20° F (-6.7° C) to 60° F (15.6° C)	1
0° F (-17.8° C) to 20° F (-6.7° C)	2
(200,000 Btu/Hr models)	
20° F (-6.7° C) to 60° F (15.6° C)	2
0° F (-17.8° C) to 20° F (-6.7° C)	3

Less gas is vaporized at lower temperatures. Your local propane gas dealer will help you select the proper supply system.

INSTALLATION

WARNING: Review and understand the warnings in the Safety section, page 2. They are needed to safely operate this heater. Follow all local codes when using this heater.

CAUTION: Never ignite and/or run this heater unless the shells are fully extended and locked into position.

CAUTION: Not intended for use on finished floors. This includes, but is not limited to carpet, rugs, vinyl, treated and synthetic wood flooring.

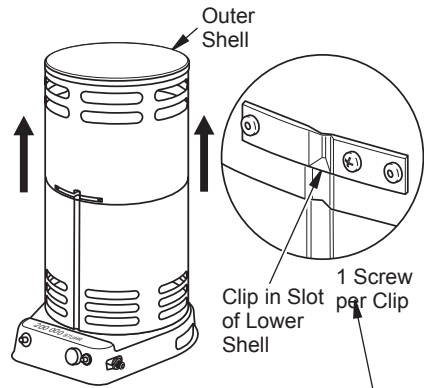
Tools Required:

- 7/8" wrench
- 3/4" wrench (or adjustable wrench)
- #1 Phillips screwdriver

OUTER SHELL

IMPORTANT: When the heater is first removed from carton, the outer shell is in the down position. Protect hands before lifting outer shell. Never grasp bare metal without hand protection.

1. Care must be taken to protect hands during this step. Lift outer shell straight up as shown in Figure 2, until all three clips engage slots in lower shell. Screw holes will line up at this point.
2. Lock clips into place with 1 screw each as shown in Figure 2. The heater must not be operated unless the outer shell is properly extended and fully locked into place.



**Figure 2 - Lifting Outer Shell
(200,000 Btu/Hr Model Shown)**

INSTALLATION

Continued

CONNECTING TO GAS SUPPLY

⚠ WARNING: Test all gas piping and connections for leaks after installation or servicing. Never use an open flame to check for a leak. Apply a mixture of liquid soap and water to all joints. Bubbles forming show a leak. Correct all leaks at once.

1. Provide propane supply system (see *Propane Supply*, page 4).
2. Connect fuel gas fitting on hose/regulator assembly to propane tank(s). Turn fuel gas fitting counterclockwise into threads on tank. Tighten firmly using a wrench. **IMPORTANT:** Tighten regulator with vent pointing down. Pointing vent down protects regulator from weather damage.
3. Connect hose to the valve inlet. Tighten firmly using a wrench. You must use the regulator supplied with heater even if propane tank has one.
4. Open propane supply valve on propane tank(s) slowly. *Note: If not opened slowly, excess-flow check valve on propane tank may stop gas flow. If this happens, you may hear a click inside the regulator assembly, this is the check valve closing. To reset the excess flow check valve, close propane supply valve and open again slowly.*

5. Check all connections for leaks. Apply mixture of liquid soap and water to gas joints. Bubbles forming show a leak that must be corrected.

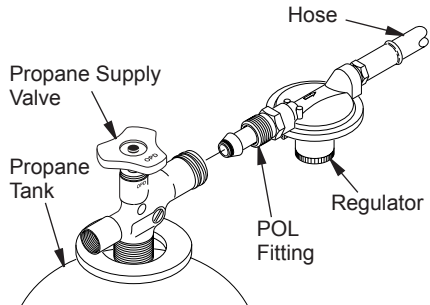


Figure 3 - Regulator Position

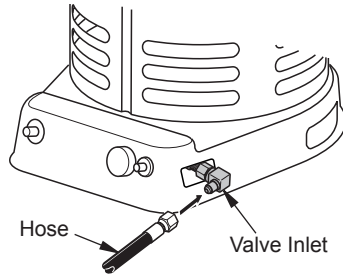


Figure 4 - Hose and Valve Inlet (200,000 Btu/Hr Model Shown)

OPERATION

⚠ WARNING: Review and understand the warnings in the Safety section, page 2. They are needed to safely operate this heater. Follow all local codes when using this heater.

80,000 BTU/HR HEATER

TO START HEATER

1. Follow all installation, ventilation and safety information.

2. Locate heater on stable and level surface. Make sure strong drafts do not blow on heater.
3. Make sure unit is turned off by slightly pressing and turning control knob fully clockwise to OFF.

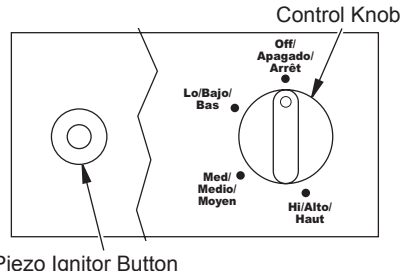


Figure 5 - Control Knob and Piezo Ignitor

OPERATION

Continued

4. Open propane supply valve on propane tank(s) slowly. *Note: If not opened slowly, excess-flow check valve on propane tank may stop gas flow. If this happens, you may hear a click inside the regulator assembly, this is the check valve closing. To reset the excess flow check valve, close propane supply valve and open again slowly.*
5. Slightly press and turn control knob counterclockwise to the LO position (see Figure 5).
6. With the control knob pushed all the way in, press and release the piezo ignitor button. Keep pressing piezo ignitor button until the burner lights. Hold control knob down for a maximum of 15 seconds while attempting ignition. If heater does not ignite, release control knob and wait 3 minutes before attempting to reignite.
7. After ignition, hold control knob down for about 30 seconds. This activates the automatic control system.
8. When burner remains lit, set heater at the desired heat level by slightly depressing the control knob and turning it counterclockwise to the MED or HI settings (see Figure 5, page 5).
9. If burner goes out, turn off gas. Slightly depress and turn control knob fully clockwise to OFF. Check fuel supply. If adequate fuel is available, restart heater beginning at step 1, page 5.

CAUTION: Always run heater with control knob at LO, MED or HI settings. Never set control knob between OFF, LO, MED or HI settings.

TO STOP HEATER

1. Tightly close propane supply valve on propane tank(s). Allow heater to burn remaining fuel in hose.
2. Shut off burner. Do this by pushing in the control knob and turning clockwise to the OFF position.

TO RESTART HEATER

1. Wait five minutes after stopping heater.
2. Restart heater by following To Start Heater, page 5.

200,000 BTU/HR HEATER

TO START HEATER

1. Before lighting pilot fully close the ball valve (turn knob fully clockwise).
2. Fully open the valve on the propane cylinder and wait 15 seconds before proceeding to step 3.
3. Press red button on safety pilot valve admitting gas to the heater. Then push and release the ignitor button until the pilot lights.
4. When the pilot lights, continue to hold the button depressed for 30 seconds, then release.
5. If pilot goes out, wait 5 minutes and repeat the lighting procedure.
6. When the pilot remains lit, open the ball valve (turn knob counterclockwise) to light main burner. Partially close valve to regulate heat output.

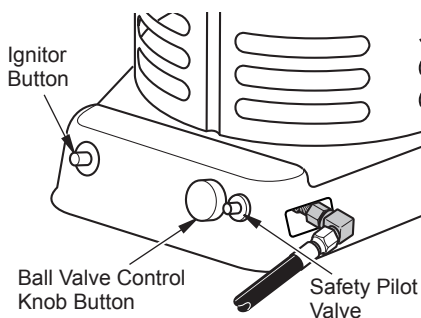


Figure 6 - Starting Heater

TO STOP HEATER


1. Securely close valve on the propane cylinder.
2. Continue to operate heater until all fuel in the hose has burned.
3. Fully close the ball valve.

TO RESTART HEATER

1. Securely close valve at propane cylinder.
2. Wait 5 minutes.
3. Restart heater by following To Start Heater.


STORAGE

 **CAUTION: Disconnect heater from propane supply tank(s).**

 **CAUTION: Be careful not to locate fingers in grooves on side of heater, in vent holes or on bottom of shell when collapsing shell to the down position. Severe cuts may occur. Always wear hand protection when grasping bare metal.**

1. The heater should be inspected before each use and at least annually by a qualified person.
2. Before each use, check the soft "O" ring seat at the bullnose of the POL fitting. If the "O" ring is cut, scuffed or otherwise damaged, replace the POL fitting with part number LPA4020.
3. Turn off the gas at the propane/LP gas supply cylinder(s) when the heater is not in use.
4. Heater is to be stored indoors. The connection between propane/LP gas supply cylinder(s) and heater must be disconnected, cylinder(s) removed from the heater and stored outdoors in accordance with Chapter 5 of the *Standard for Storage and Handling of Liquefied Petroleum Gases ANSI/NFPA 58* and *CSA B149.1, Natural Gas and Propane Installation Code*.
5. Store in a dry, clean and safe place.

MAINTENANCE

 **WARNING: Never attempt to service heater while it is connected to propane supply, operating or hot. Severe burns can occur.**

1. Keep heater clean.
2. Inspect heater before each use. Check connections for leaks. Apply mixture of liquid soap and water to connections. Bubbles forming show a leak that must be corrected. Correct all leaks at once.
3. Inspect hose/regulator assembly before each use. If hose is highly worn or cut, replace.
4. Have heater inspected yearly by a qualified service person.

TROUBLESHOOTING

⚠ WARNING: Never service heater while it is plugged in, connected to propane supply, operating or hot. Severe burns and electrical shock can occur.

OBSERVED FAULT	POSSIBLE CAUSE	REMEDY
Burner fails to light	<ol style="list-style-type: none"> 1. Propane supply valve closed on propane tank(s) 2. Excess flow check valve closed 3. Blockage in burner orifice 4. Piezo ignition system not sparking 5. Pilot orifice clogged (200,000 Btu models only) 	<ol style="list-style-type: none"> 1. Open propane supply valve slowly 2. Close propane supply valve on propane tank and re-open slowly 3. Replace burner orifice 4. Check to assure ignitor electrode gap is 0.195" Check wire lead for damage. Replace piezo ignitor and/or ignitor electrode as necessary 5. Clean or replace pilot assembly
Pilot lights but goes out when automatic control valve button is released (200,000 Btu/Hr models only)	<ol style="list-style-type: none"> 1. Not enough warm up time 2. Low gas pressure 3. Thermocouple loose or needs to be replaced 4. Automatic control valve needs to be replaced 	<ol style="list-style-type: none"> 1. Relight, hold automatic control valve button in 45 seconds 2. Check propane tank(s) for proper gas supply 3. Tighten connection or replace thermocouple 4. Replace automatic control valve
Burn rate is low	<ol style="list-style-type: none"> 1. Control valve is on LOW 2. Plugged gas orifice 3. Low gas pressure 4. Low fuel supply 	<ol style="list-style-type: none"> 1. Turn valve counter clockwise to HIGH 2. Replace gas orifice 3. Check gas supply; check regulator output 4. Consult propane gas supplier

SPECIFICATIONS

80,000 BTU/HR

- Rating: 40,000 - 80,000 Btu/hr (11.72 - 23.4 kW)
- Type of Gas: Propane/LP Only
- Gas Supply Pressure to regulator: Maximum - Bottle Pressure, Minimum - 5 psig (34.5 kPa)
- Gas Supply Pressure regulator out: 19" W.C. (48 cm)
- Ignition: Piezo Ignitor
- Minimum Ambient Temp Rating: 0° F (-17.8° C)
- Fuel Consumption/hr: 1.85 - 3.71 lb (0.83 - 1.68 kg)
- Fuel Orifice Port No.: 6
- Fuel Orifice Port Size: 0.04" (1.02 mm)

REPLACEMENT PARTS

Note: Use only original replacement parts. This will protect your warranty coverage for parts replaced under warranty.

PARTS UNDER WARRANTY

Contact authorized dealers of this product. If they can't supply original replacement part(s), call DESA Heating, LLC at 1-866-672-6040.

When calling DESA Heating, LLC, have ready:

- your name
- your address
- model and serial numbers of your heater
- how heater was malfunctioning
- purchase date

Usually, we will ask you to return the part to the factory.

PARTS NOT UNDER WARRANTY

Contact authorized dealers of this product. If they can't supply original replacement part(s), call DESA Heating, LLC at 1-866-672-6040 for referral information. A list of authorized dealers can be found by visiting www.desatech.com.

When calling DESA Heating, LLC, have ready:

- model and serial numbers of your heater
- the replacement part number

200,000 BTU/HR

- Rating: 75,000 - 200,000 Btu/hr (22.0 - 58.6 kW)
- Type of Gas: Propane/LP Only
- Gas Supply Pressure to regulator: Maximum - Bottle Pressure, Minimum - 15 psig (103 kPa)
- Gas Supply Pressure regulator out: 10 psig (68.9 kPa)
- Ignition: Piezo Ignitor
- Minimum Ambient Temp. Rating: 0° F (-17.8° C)
- Fuel Consumption/hr: 3.48 - 9.28 b (1.58 - 4.21 kg)
- Fuel Orifice Port No.: 6
- Fuel Orifice Port Size: 0.032" (0.813 mm)

TECHNICAL SERVICES

You may have further questions about installation, operation, or troubleshooting. If so, contact DESA Heating, LLC at 1-866-672-6040. When calling please have your model and serial numbers of your heater ready.

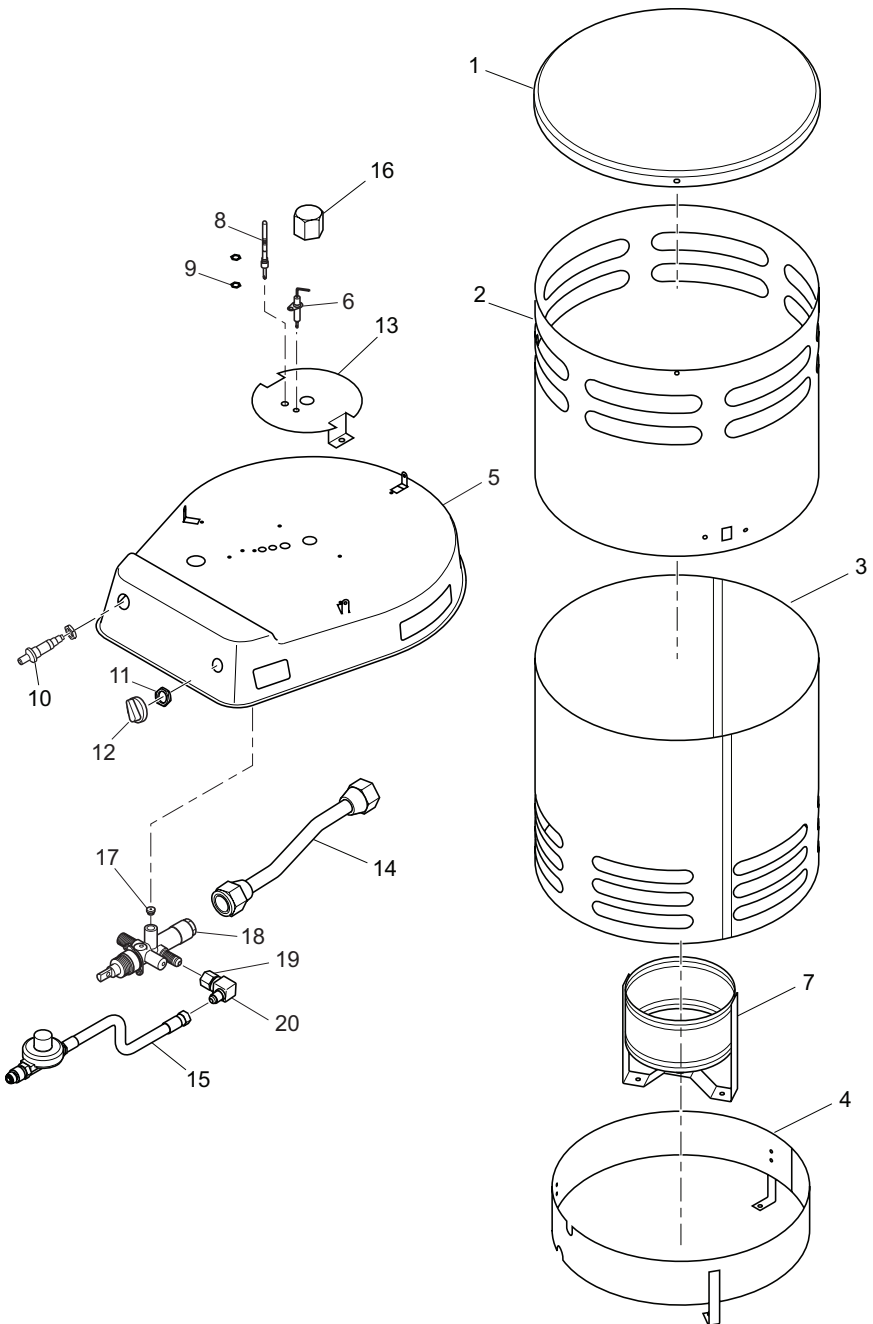
You can also visit DESA Heating, LLC's web site at www.desatech.com.

ACCESSORIES

Purchase these accessories from your local dealer. If they can not supply these accessories call DESA Heating, LLC at 1-866-672-6040 for information. You can also write to the address listed on the back page of this manual.

PARTS

MODELS TC106A, TC112A, TC113A, TC114A AND TC115A



PARTS

MODELS TC106A, TC112A, TC113A, TC114A AND TC115A

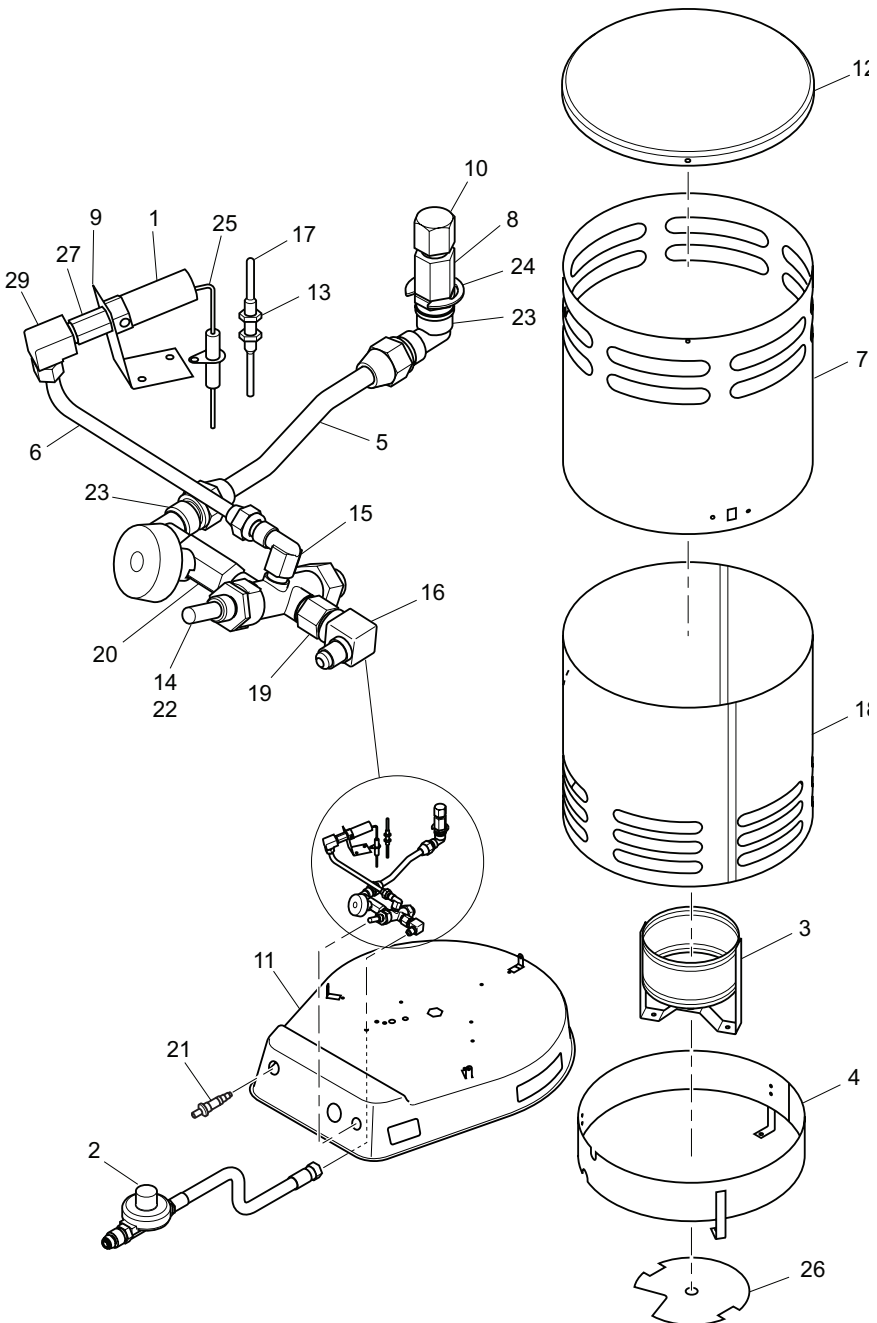
This list contains replaceable parts used in your heater. When ordering parts, follow the instructions listed under Replacement Parts on page 9 of this manual.

KEY			
NO.	PART NO.	DESCRIPTION	QTY.
1	113785-01	Cap	1
2	113781-01	Upper Shell	1
3	113825-01	Lower Shell	1
4	113778-01	Ring Shield	1
5	**	Base	1
6	116617-01	Ignitor Electrode	1
7	113777-02	Burner Ring Assembly	1
8	113790-01	Thermocouple	1
9	100898-01	Thin Hex Nut	2
10	102445-01	Piezo Ignitor Kit	1
11	098508-01	Valve Retainer Nut	1
12	121326-01	Control Knob	1
13	123632-01	Heat Shield	1
14	123631-01	Fuel Tube Assembly Kit	1
15	121992-01	Hose/Regulator Assembly, 10 foot	1
16	121513-01	Orifice, LP	1
17	099460-01	Brass Hex Cap	1
18	116554-01	Automatic Valve	1
19	117059-01	Adapter, 1/4 FPT x 1/4 MPT	2
20	113795-01	Female Elbow Fitting, 1/4 FPT x 3/8 FLR	1
PARTS AVAILABLE - NOT SHOWN			
	117069-02	80,000 Btu/Hr Rating Decal	1
	113808-07	Hang Tag (English)	1
	113808-08	Hang Tag (Spanish)	1
	113808-09	Hang Tag (French)	1
	113805-04	Installation Decal (English)	1
	113805-05	Installation Decal (Spanish)	1
	113805-06	Installation Decal (French)	1
	113802-29	Model Decal	1
	116558-01	Control Position Decal	1

**Not a field replaceable part

PARTS

MODELS 200C, RCP200V(A), SPC-200C, TC107 AND TC200V(A)



PARTS

MODELS 200C, RCP200V(A), SPC-200C, TC107 AND TC200V(A)

This list contains replaceable parts used in your heater. When ordering parts, follow the instructions listed under Replacement Parts on page 9 of this manual.

KEY NO.	PART NO.	DESCRIPTION	QTY.
1	113814-01	Pilot Assembly	1
2	113835-01	Hose/Regulator Assembly	1
3	113777-01	Burner Ring Assembly	1
4	113778-01	Ring Shield	1
5	113779-01	Fuel Tube Assembly	1
6	113780-01	Pilot Tube Assembly	1
7	114178-01	Upper Shell	1
8	113782-01	Orifice Adapter	1
9	113783-01	Bracket, Pilot Mounting	1
10	113816-01	Orifice, LP	1
11	**	Base	1
12	113785-01	Cap	1
13	100898-01	Thermocouple Clip Thin Hex Nut	2
14	113787-01	Control Valve	1
15	113788-01	Female Elbow Fitting, 1/4 FLR x 1/8 FPT	1
16	113817-01	Female Elbow Fitting, 1/4 FLR x 1/4 FPT	1
17	113790-01	Thermocouple	1
18	113821-01	Lower Shell	1
19	113812-01	Fitting, 1/4 FPT x 1/4 MPT	1
20	113793-01	Ball Valve	1
21	102445-01	Piezo Ignitor Kit	1
22	113794-01	Valve Nut, 1/2-28	1
23	113795-01	Female Elbow Fitting, 1/4 FPT x 3/8 FLR	3
24	113796-01	Retaining Ring	1
25	113797-01	Ignitor Electrode	1
26	113798-01	Heat Shield	1
27	115364-02	Pilot Orifice	1
28	113801-01	Elbow Fitting, 1/8 FPT x 1/4 CPSN	1
PARTS AVAILABLE - NOT SHOWN			
	113809-01	Ball Valve Knob	1
	113810-01	Ball Valve Knob Insert	1
	117069-03	200,000 Btu/Hr Rating Decal	1
	113808-01	Hang Tag (English)	1
	113808-02	Hang Tag (Spanish)	1
	113808-03	Hang Tag (French)	1
	113805-01	Installation Decal (English)	1
	113805-02	Installation Decal (Spanish)	1
	113805-03	Installation Decal (French)	1
	113802-19	Model Decal	1

**Not a field replaceable part

WARRANTY

KEEP THIS WARRANTY

Model (located on product or identification tag) _____

Serial No. (located on product or identification tag) _____

Date Purchased _____

Keep receipt for warranty verification.

DESA HEATING, LLC LIMITED WARRANTIES

New Products

Standard Warranty: DESA Heating, LLC warrants this new product and any parts thereof to be free from defects in material and workmanship for a period of one (1) year from the date of first purchase from an authorized dealer provided the product has been installed, maintained and operated in accordance with DESA Heating, LLC's warnings and instructions.

For products purchased for commercial, industrial or rental usage, this warranty is limited to 90 days from the date of first purchase.

Factory Reconditioned Products

Limited Warranty: DESA Heating, LLC warrants factory reconditioned products and any parts thereof to be free from defects in material and workmanship for 30 days from the date of first purchase from an authorized dealer provided the product has been installed, maintained and operated in accordance with DESA Heating, LLC's warnings and instructions.

Terms Common to All Warranties

The following terms apply to all of the above warranties:

Always specify model number and serial number when contacting the manufacturer. To make a claim under this warranty the bill of sale or other proof of purchase must be presented.

This warranty is extended only to the original retail purchaser when purchased from an authorized dealer, and only when installed by a qualified installer in accordance with all local codes and instructions furnished with this product.

This warranty covers the cost of part(s) required to restore this product to proper operating condition and an allowance for labor when provided by a DESA Heating, LLC Authorized Service Center or a provider approved by DESA Heating, LLC. Warranty parts must be obtained through authorized dealers of this product and/or DESA Heating, LLC who will provide original factory replacement parts. Failure to use original factory replacement parts voids this warranty.

Travel, handling, transportation, diagnostic, material, labor and incidental costs associated with warranty repairs, unless expressly covered by this warranty, are not reimbursable under this warranty and are the responsibility of the owner.

Excluded from this warranty are products or parts that fail or become damaged due to misuse, accidents, improper installation, lack of proper maintenance, tampering, or alteration(s).

This is DESA Heating, LLC's exclusive warranty, and to the full extent allowed by law; this express warranty excludes any and all other warranties, express or implied, written or verbal and limits the duration of any and all implied warranties, including warranties of merchantability and fitness for a particular purpose to one (1) year on new products and 30 days on factory reconditioned products from the date of first purchase. DESA Heating, LLC makes no other warranties regarding this product.

DESA Heating, LLC's liability is limited to the purchase price of the product, and DESA Heating, LLC shall not be liable for any other damages whatsoever under any circumstances including indirect, incidental, or consequential damages.

Some states do not allow limitations on how long an implied warranty lasts or the exclusion or limitation of incidental or consequential damages, so the above limitation or exclusion may not apply to you.

This warranty gives you specific legal rights, and you may also have other rights which vary from state to state.

For information about this warranty contact:



DESA Heating, LLC
2701 Industrial Drive
Bowling Green, KY 42101
www.desatech.com
1-866-672-6040



82 Akron Road
Toronto, Ontario M8W 1T2
(416) 255-5333

121512-01
Rev. C
05/08