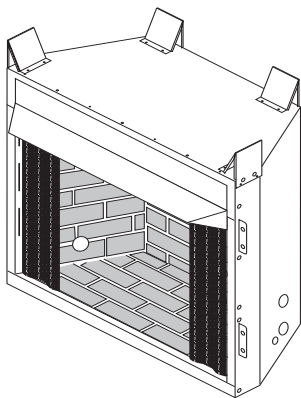




## **UNVENTED (VENT-FREE) UNIVERSAL FIREBOX OWNER'S OPERATION AND INSTALLATION MANUAL**



**NON-CIRCULATING MODELS  
VFF-32H-AKA, VFF-36H-AKA, VFF-42H-AKA  
VFF-32S-AKA, VFF-36S-AKA, VFF-42S-AKA,  
VTFB32, VTFB32H, VTFB36, VTFB36H, VTFB42, VTFB42H**

**⚠ WARNING:** If the information in this manual is not followed exactly, a fire or explosion may result causing property damage, personal injury or loss of life.

**FOR USE ONLY WITH A LISTED GAS-FIRED UNVENTED DECORATIVE ROOM HEATER NOT TO EXCEED 40,000 BTU/HR. DO NOT BUILD A WOOD FIRE.**

**Carefully review the instructions supplied with the decorative type unvented room heater for the minimum fireplace size requirement.**

**DO NOT INSTALL THE APPLIANCE IN THIS FIREBOX, UNLESS THIS FIREBOX MEETS THE MINIMUM DIMENSIONS REQUIRED FOR THE INSTALLATION.**

**This firebox has been tested and approved under ANSI Z21.91 for use with any ANSI Z21.11.2 approved gas logs.**

**INSTALLER:** Leave this manual with the appliance.  
**CONSUMER:** Retain this manual for future reference.

## TABLE OF CONTENTS

Safety .....	2	Installation .....	9
Local Codes.....	3	Replacement Parts .....	14
Product Features .....	4	Technical Service.....	14
Locating Firebox.....	4	Accessories .....	15
Product Specifications .....	5	Parts .....	16
Air For Combustion and Ventilation .....	7	Warranty .....	Back Cover

## SAFETY

**⚠ WARNING:** Improper installation, adjustment, alteration, service or maintenance can cause injury or property damage. Refer to this manual for correct installation and operational procedures. For assistance or additional information consult a qualified installer, service agency or the gas supplier.

This appliance may be installed in an aftermarket,\* permanently located, manufactured (mobile) home, where not prohibited by local codes.

This appliance is only for use with the type of gas indicated on the rating plate. This appliance is not convertible for use with other gases.

\* Aftermarket: Completion of sale, not for purpose of resale, from the manufacturer

**⚠ WARNING:** This product contains and/or generates chemicals known to the state of California to cause cancer or birth defects or other reproductive harm.

**IMPORTANT:** Read this owner's manual carefully and completely before trying to assemble, operate or service this heater. Improper use of this fireplace can cause serious injury or death from burns, fire, explosion, electrical shock and carbon monoxide poisoning.

**⚠ WARNING:** Any change to this firebox or its controls can be dangerous.

**⚠ WARNING:** Do not allow fans to blow directly into the firebox. Avoid any drafts that alter burner flame patterns. Ceiling fans can create drafts that alter burner flame patterns. Altered burner patterns can cause sooting.

**⚠ WARNING:** Do not use a blower insert, heat exchanger insert or other accessory not approved for use with this firebox.

## SAFETY

### Continued

**Firebox front and screen become very hot when running heater. Keep children and adults away from hot surface to avoid burns or clothing ignition. Firebox will remain hot for a time after shutdown. Allow surface to cool before touching.**

**Do not place clothing or other flammable material on or near the appliance. Never place any objects in the firebox or on logs.**

**Carefully supervise young children when they are in the room with firebox.**

**You must operate this fireplace with the provided fireplace screen, hood if provided, in place. Make sure these parts are in place and screens are closed before running firebox. The supplied hood may not be replaced with a hood which may be provided with a log heater.**

**Keep the fireplace area clear and free from combustible materials, gasoline and other flammable vapors and liquids.**

1. Do not use this firebox as a wood-burning fireplace. Use only decorative unvented room heaters (log sets).
2. Do not add extra logs or ornaments such as pine cones, vermiculite or rock wool. Using these added items can cause sooting.
3. Use only provided hood or appropriate hood accessory. See Accessories on page 15.
4. Vent-free gas log heaters installed in these fireboxes require fresh air ventilation to run properly. See Air for Combustion and Ventilation, page 7.
5. Do not run heater in firebox
  - where flammable liquids or vapors are used or stored
  - under dusty conditions
6. Do not use heater in this firebox to cook food or burn paper or other objects.
7. Turn installed heater off and let cool before servicing firebox. Only a qualified service person should service and repair firebox.
8. Do not use the firebox if it has been under water due to the shock hazard that could result with the blower accessory (if installed) in place.

## LOCAL CODES

Install and use with care. Follow all local codes. In the absence of local codes, use the latest edition of *The National Fuel Gas Code, ANSI Z223.1/NFPA 54\**. Firebox must be electrically grounded in accordance with the *National Electrical Code, ANSI/NFPA 70* (latest edition).

\*Available from:

American National Standards Institute, Inc.  
1430 Broadway  
New York, NY 10018  
National Fire Protection Association, Inc.  
Batterymarch Park  
Quincy, MA 02269

**State of Massachusetts:** The installation must be made by a licensed plumber or gas fitter in the Commonwealth of Massachusetts.

Sellers of unvented propane or natural gas-fired supplemental room heaters shall provide to each purchaser a copy of 527 CMR 30 upon sale of the unit.

Vent-free gas products are prohibited for bedroom and bathroom installation in the Commonwealth of Massachusetts.

## PRODUCT FEATURES

### OPERATION

This firebox is designed for use with approved ANSI Z21.11.2 decorative type unvented room heaters. (Physical size limitations apply. Refer to minimum firebox requirements supplied with log heater.) It requires no outside venting or chimney making installation easy and inexpensive. When used without blower, heater installed in firebox requires no electricity making it ideal for emergency backup heat.

### REFRACTORY BRICK LINER

Your firebox may feature a concrete refractory brick liner. As with all concrete liners, this liner may develop slight cracks when exposed to heat. These cracks will not affect performance of fireplace or vent-free gas logs.

### OUTSIDE AIR KIT ACCESSORY

An optional AK4 air kit provides additional outdoor air to improve burner efficiency and reduce build-up of condensation in the living space. Follow instructions included with air kit.

## LOCATING FIREBOX

### PLANNING

Plan where you will install the firebox. This will save time and money later when you install the firebox. Before installation, consider the following:

1. Where firebox will be located: Allow for wall and ceiling clearances (see *Installation Clearances*, page 10).
2. Everything needed to complete fireplace installation.
3. These models CANNOT be installed in a bedroom unless maximum Btu rating of installed vent-free log set is less than 10,000 Btu/hr.
4. Proper air for combustion and ventilation (page 7).

# PRODUCT SPECIFICATIONS

## 32" MODELS

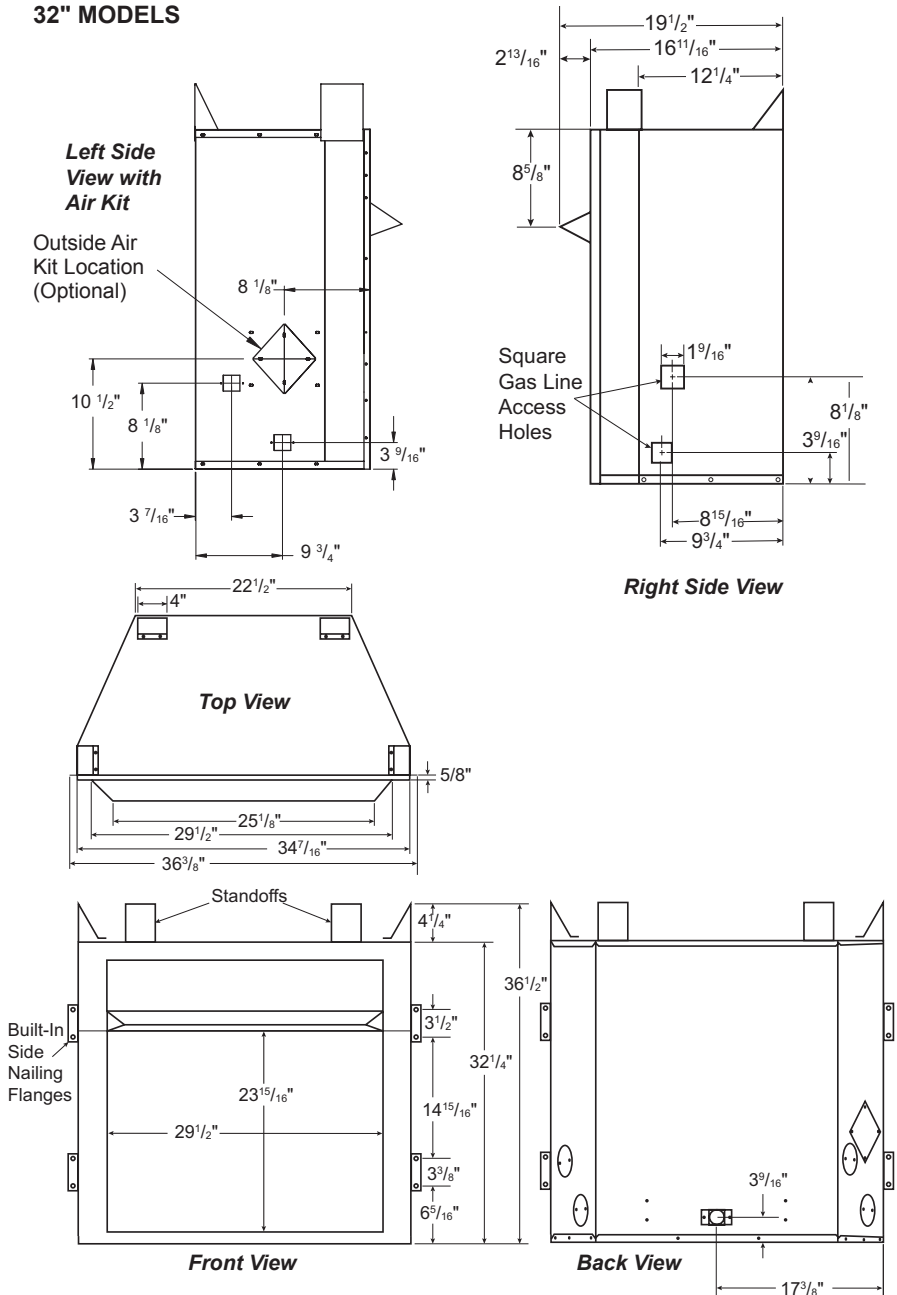


Figure 1 - Firebox Dimensions (32" Models)

# PRODUCT SPECIFICATIONS

Continued

## 36" AND 42" MODELS

Note: If only one dimension is shown, dimension is the same for both 36" and 42" models.

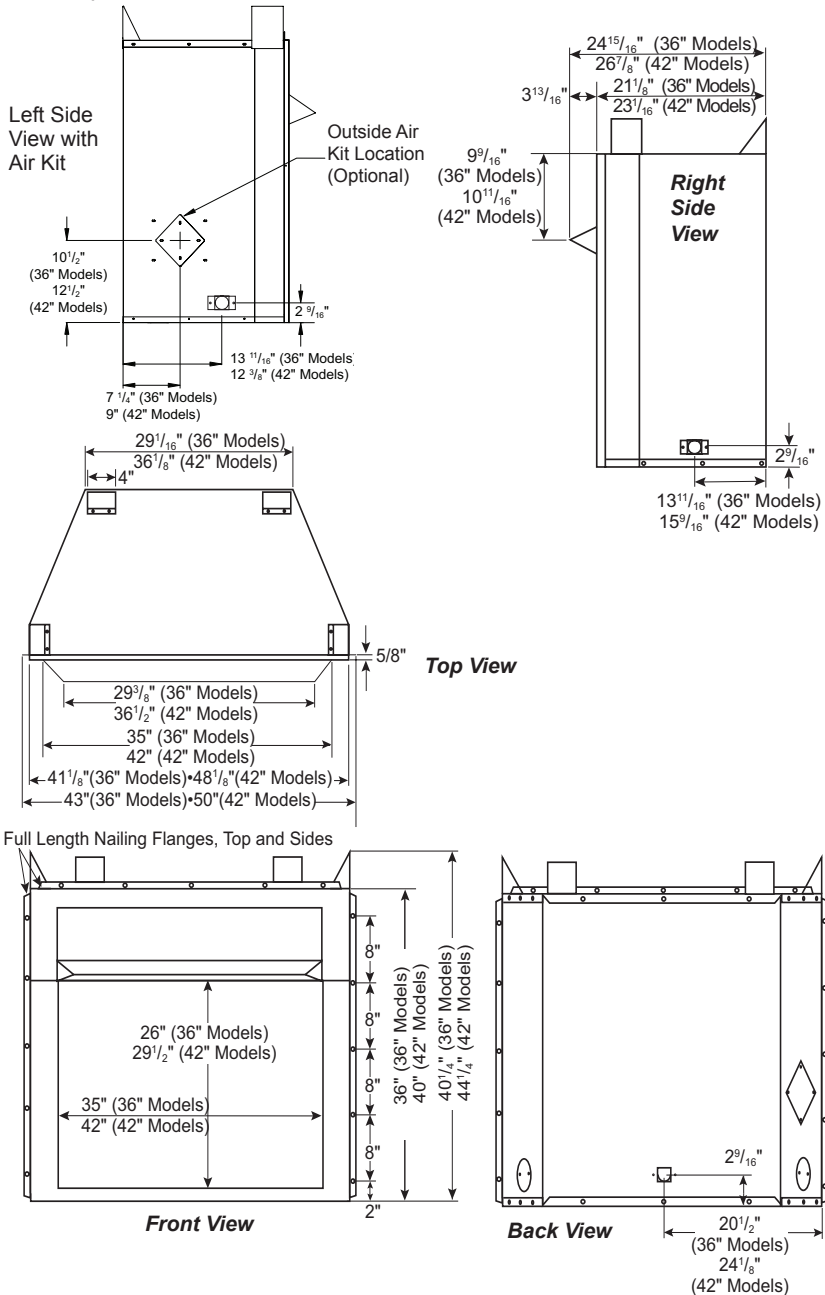


Figure 2 - Firebox Dimensions (36" and 42" Models)

## AIR FOR COMBUSTION AND VENTILATION

**⚠ WARNING:** This heater shall not be installed in a room or space unless the required volume of indoor combustion air is provided by the method described in the *National Fuel Gas Code, ANSI Z223.1/NFPA 54*, the *International Fuel Gas Code*, or applicable local codes. Read the following instructions to insure proper fresh air for this and other fuel-burning appliances in your home.

Today's homes are built more energy efficient than ever. New materials, increased insulation and new construction methods help reduce heat loss in homes. Home owners weather strip and caulk around windows and doors to keep cold air out and warm air in. During heating months, home owners want their homes as airtight as possible.

While it is good to make your home energy efficient, your home needs to breathe. Fresh air must enter your home. All fuel-burning appliances need fresh air for proper combustion and ventilation.

Exhaust fans, fireboxes, clothes dryers and fuel burning appliances draw air from the house to operate. You must provide adequate fresh air for these appliances. This will insure proper venting of vented fuel-burning appliances.

### PROVIDING ADEQUATE VENTILATION

The following are excerpts from *National Fuel Gas Code, ANSI Z223.1/NFPA 54, Air for Combustion and Ventilation*.

All spaces in homes fall into one of the three following ventilation classifications:

1. Unusually Tight Construction
2. Unconfined Space
3. Confined Space

Information on page 7 through 9 will help you classify your space and provide adequate ventilation.

### Unusually Tight Construction

Air that leaks around doors and windows may provide enough fresh air for combustion and ventilation. However, in buildings of unusually tight construction, you must provide additional fresh air.

Unusually tight construction is defined as construction where:

- a. walls and ceilings exposed to outside atmosphere have a continuous water vapor retarder with a rating of one perm ( $6 \times 10^{-11}$  kg per pa-sec- $m^2$ ) or less with openings gasketed or sealed and
- b. weather stripping has been added on openable windows and doors and
- c. caulking or sealants are applied to areas such as joints around window and door frames, between sole plates and floors, between wall-ceiling joints, between wall panels, at penetrations for plumbing, electrical and gas lines and at other openings.

If your home meets all three criteria above, you must provide additional fresh air. See [Ventilation Air From Outdoors](#), page 9.

If your home does not meet all three criteria above, proceed to [Determining Fresh-Air Flow for Firebox Location](#), page 8.

### Confined and Unconfined Space

The *National Fuel Gas Code, ANSI Z223.1/NFPA 54* defines a confined space as a space whose volume is less than 50 cubic feet per 1,000 Btu per hour ( $4.8 \text{ m}^3$  per kw) of the aggregate input rating of all appliances installed in that space and an unconfined space as a space whose volume is not less than 50 cubic feet per 1,000 Btu per hour ( $4.8 \text{ m}^3$  per kw) of the aggregate input rating of all appliances installed in that space. Rooms communicating directly with the space in which the appliances are installed\*, through openings not furnished with doors, are considered a part of the unconfined space.

\* Adjoining rooms are communicating only if there are doorless passageways or ventilation grills between them.

# AIR FOR COMBUSTION AND VENTILATION

## Continued

### DETERMINING FRESH-AIR FLOW FOR HEATER LOCATION

#### Determining if You Have a Confined or Unconfined Space

Use this work sheet to determine if you have a confined or unconfined space.

**Space:** Includes the room in which you will install heater plus any adjoining rooms with doorless passageways or ventilation grills between the rooms.

1. Determine the volume of the space (length x width x height).

Length x Width x Height = \_\_\_\_\_ cu. ft.  
(volume of space)

*Example:* Space size 22 ft. (length) x 18 ft. (width) x 8 ft. (ceiling height) = 3168 cu. ft. (volume of space)

If additional ventilation to adjoining room is supplied with grills or openings, add the volume of these rooms to the total volume of the space.

2. Multiply the space volume by 20 to determine the maximum Btu/Hr the space can support.

\_\_\_\_\_ (volume of space) x 20 = (Maximum Btu/Hr the space can support)

*Example:* 3168 cu. ft. (volume of space) x 20 = 63,360 (maximum Btu/Hr the space can support)

3. Add the Btu/Hr of all fuel burning appliances in the space.

Vent-free heater	_____ Btu/Hr
Gas water heater*	_____ Btu/Hr
Gas furnace	_____ Btu/Hr
Vented gas heater	_____ Btu/Hr
Gas fireplace logs	_____ Btu/Hr
Other gas appliances* +	_____ Btu/Hr
Total	= _____ Btu/Hr

\* Do not include direct-vent gas appliances. Direct-vent draws combustion air from the outdoors and vents to the outdoors.

*Example:*

Gas water heater	40,000	Btu/Hr
Vent-free heater	+ 39,000	Btu/Hr
Total	= 79,000	Btu/Hr

4. Compare the maximum Btu/Hr the space can support with the actual amount of Btu/Hr used.

\_\_\_\_\_ Btu/Hr (maximum the space can support)

\_\_\_\_\_ Btu/Hr (actual amount of Btu/Hr used)

*Example:* 63,360 Btu/Hr (maximum the space can support)  
79,000 Btu/Hr (actual amount of Btu/Hr used)

The space in the above example is a confined space because the actual Btu/Hr used is more than the maximum Btu/Hr the space can support. You must provide additional fresh air. Your options are as follows:

- A. Rework worksheet, adding the space of an adjoining room. If the extra space provides an unconfined space, remove door to adjoining room or add ventilation grills between rooms. See Ventilation Air From Inside Building, page 9.
- B. Vent room directly to the outdoors. See Ventilation Air From Outdoors, page 9.
- C. Install a lower Btu/Hr heater, if lower Btu/Hr size makes room unconfined.

If the actual Btu/Hr used is less than the maximum Btu/Hr the space can support, the space is an unconfined space. You will need no additional fresh air ventilation.

**⚠ WARNING:** If the area in which the heater may be operated does not meet the required volume for indoor combustion air, combustion and ventilation air shall be provided by one of the methods described in the *National Fuel Gas Code, ANSI Z223.1/NFPA 54*, the *International Fuel Gas Code*, or applicable local codes.



# AIR FOR COMBUSTION AND VENTILATION

Continued

## VENTILATION AIR

### Ventilation Air From Inside Building

This fresh air would come from an adjoining unconfined space. When ventilating to an adjoining unconfined space, you must provide two permanent openings: one within 12" of the ceiling and one within 12" of the floor on the wall connecting the two spaces (see options 1 and 2, Figure 4). You can also remove door into adjoining room (see option 3, Figure 3). Follow the *National Fuel Gas Code, ANSI Z223.1/NFPA 54, Air for Combustion and Ventilation* for required size of ventilation grills or ducts.

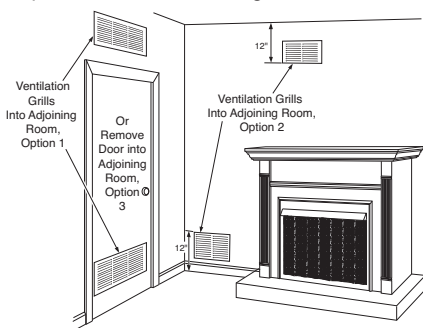


Figure 3 - Ventilation Air from Inside Building

### Ventilation Air From Outdoors

Provide extra fresh air by using ventilation grills or ducts. You must provide two permanent openings: one within 12" of the ceiling and one within 12" of the floor. Connect these items directly to the outdoors or spaces open to the outdoors. These spaces include attics and crawl spaces. Follow the *National Fuel Gas Code, ANSI Z223.1/NFPA 54, Air for Combustion and Ventilation* for required size of ventilation grills or ducts.

**IMPORTANT:** Do not provide openings for inlet or outlet air into attic if attic has a thermostat-controlled power vent. Heated air entering the attic will activate the power vent.

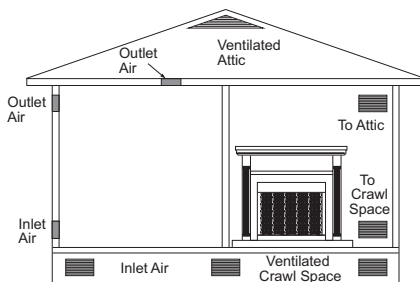


Figure 4 - Ventilation Air from Outdoors

## INSTALLATION

**WARNING:** A qualified service person must install firebox. Follow all local codes.

**WARNING:** Never install the firebox

- in a bedroom or bathroom\*
  - in a recreational vehicle
  - where curtains, furniture, clothing or other flammable objects are less than 36" from front or 42" from top of firebox. For side clearances see Figure 5, page 10
  - in high traffic areas
  - in windy or drafty areas
- \* Unless the installed log set is rated at 10,000 Btu/Hr or less.

**CAUTION:** Log heaters installed in this firebox create warm air currents. These currents move heat to wall surfaces next to firebox. Installing firebox next to vinyl or cloth wall coverings or operating firebox where impurities (such as, but not limited to, tobacco smoke, aromatic candles, cleaning fluids, oil or kerosene lamps, etc.) in the air exist, may discolor walls or cause odors.

# INSTALLATION

## Continued

**IMPORTANT:** Vent-free gas log heaters add moisture to the air. Although this is beneficial, installing firebox in rooms without enough ventilation air may cause mildew to form from too much moisture. See [Air for Combustion and Ventilation](#), page 7.

**IMPORTANT:** Make sure firebox is level. If firebox is not level, log set will not work properly.

*Note: Your firebox is designed to be used in zero clearance installations. Wall or framing material can be placed against any exterior surface on rear, sides, top or bottom of firebox, except where standoff spacers are integrally attached. If standoff spacers are attached to firebox, these spacers can be placed directly against wall or framing materials.*

Use dimensions shown for rough openings to create the easiest installation (see [Built-In Firebox Installation](#), page 11).

## INSTALLATION CLEARANCES

**WARNING:** Maintain the minimum clearances. If you can, provide greater clearances from floor, ceiling and adjoining wall.

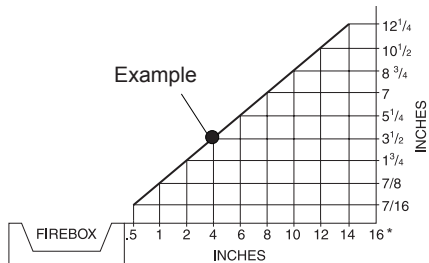
Carefully follow these instructions. This will ensure safe installation.

### Minimum Wall and Ceiling Clearances (see Figure 5)

- Clearances from side of fireplace cabinet to any combustible material and wall should follow diagram in Figure 5.  
*Example:* The face of a mantel, bookshelf, etc. is made of combustible material and protrudes 3 1/2" from wall. This combustible material must be 4" from side of fireplace cabinet (see Figure 5).
- Clearances from top of firebox opening to ceiling should not be less than 42".
- When firebox is installed on carpeting or other combustible material, other than wood flooring, firebox should be installed on a metal or wood panel extending full width and depth of enclosure.
- Clearances from bottom of firebox to floor is 0".

These fireboxes can be installed as freestanding units against a wall with approved, optional cabinet mantels (see [Accessories](#), page 15) or as a built-in unit. Clearances are the same for either installation method.

**CAUTION:** Do not install firebox directly on carpet or vinyl.



\*Minimum 16" from Side Wall

**Figure 5 - Minimum Clearance for Combustible to Wall**

### Mantel Clearances for Built-In Installation

If placing custom mantel above built-in firebox, you must meet minimum allowable clearance between mantel shelf and top of firebox opening shown in Figure 6, page 11. These are minimum allowable mantel clearances for a safe installation. Use larger clearances whenever possible to minimize heating of objects and materials placed on mantel.

**CAUTION:** Do not allow vent-free gas log heater to touch or extend beyond fireplace screen.

**NOTICE:** Surface temperatures of adjacent walls and mantels become hot during operation. Walls and mantels above firebox may become hot to the touch. If installed properly, these temperatures meet the requirement of the national product standard. Follow all minimum clearances shown in this manual.

# INSTALLATION

## Continued

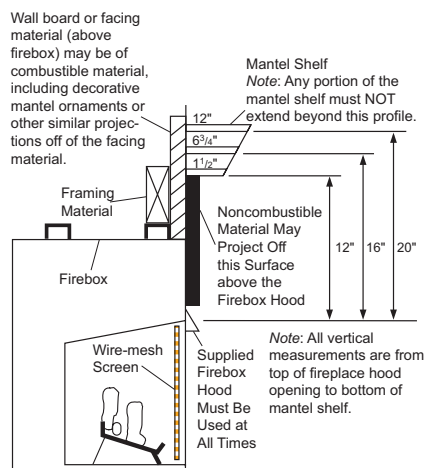
**NOTICE: If your installation does not meet the minimum clearances shown, you must do one of the following:**

- raise the mantel to an acceptable height
- remove the mantel

## BUILT-IN FIREBOX INSTALLATION

Built-in installation of this firebox involves installing firebox into a framed-in enclosure. This makes the front of firebox flush with wall. Optional brass trim accessories are available (see [Accessories](#), page 15). Brass trim will extend past sides of firebox approximately 1/2". This will cover rough edges of wall opening. If installing a mantel above firebox, you must follow clearances shown in Figure 6. Follow these instructions to install firebox in this manner.

1. Frame in rough opening. Firebox framing should be constructed of 2 x 4 lumber or heavier. Use dimensions in table and rough opening layout in Figure 7a. Adjust framing so that firebox is flush with finished wall surface. If installing in a corner, use dimensions in Figures 7b, 7c and 7d for rough opening.

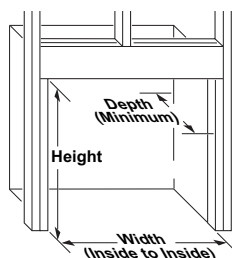


These minimum clearances replace any other recommended clearances supplied with your ANSI Z21.11.2 approved gas logs.

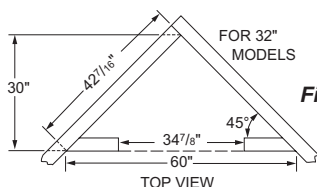
**Figure 6 - Minimum Mantel Clearances for Built-In Installation**

2. Install gas piping to firebox location. See [Installing Gas Line](#), page 12 and [Connecting to Gas Supply](#) in log set owner's manual.
3. Carefully set firebox in front of rough opening with back of firebox inside wall opening. **IMPORTANT:** If installing a perimeter trim kit, see instructions included with trim accessory. You must install shoulder screws from trim kit now.

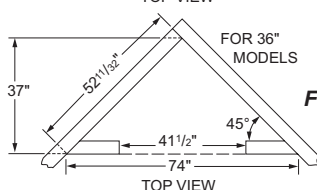
Rough Opening Dimensions for Built-in Installation			
Model	Front Width (Inside to Inside)	Height	Depth (Min.)
32"	34 7/8"	36 3/4"	16 1/4"
36"	41 1/2"	40 1/2"	20 3/4"
42"	48 5/8"	44 1/2"	22 5/8"



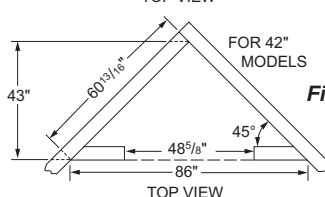
**Figure 7a**



**Figure 7b**



**Figure 7c**



**Figure 7d**

**Figure 7 - Rough Opening for Installing in Wall**

## INSTALLATION

### Continued

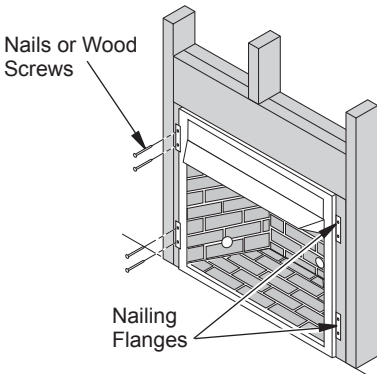
4. Carefully insert firebox into rough opening.
5. Attach firebox to wall studs using nails or wood screws through holes in nailing flange (see Figure 8).
6. If using an optional perimeter trim kit, install trim after final finishing and/or painting of wall. See instructions included with trim accessory for attaching trim.
7. Install and properly test gas log heater. Follow installation instructions included with vent-free gas log heater that is being installed.

**IMPORTANT:** When finishing your firebox, combustible materials such as wall board, gypsum board, sheet rock, drywall, plywood, etc. may be butted up next to sides and top of firebox. Combustible materials should never overlap firebox front facing.

**⚠ WARNING: Do not allow any combustible materials to overlap firebox front facing.**

**IMPORTANT:** Noncombustible materials such as brick, tile, etc. may overlap front facing, but should never cover any necessary openings like louvered slots.

**⚠ WARNING: Do not allow noncombustible materials to cover any necessary openings like louvered slots.**



**Figure 8 - Attaching Firebox to Wall Studs**

**⚠ WARNING: Use only non-combustible mortar or adhesives when overlapping the front facing with noncombustible facing material.**

### INSTALLING FIREBOX USING OPTIONAL ACCESSORY MANTELS

**⚠ WARNING: A qualified service person must install firebox. Follow all local codes.**

This firebox may be installed using a cabinet mantel accessory against a wall in your home. Firebox and cabinet mantel can be installed directly on floor. A trim kit is included with mantel accessories. Follow instructions with mantel for installation.

### INSTALLING GAS LINE

**NOTICE: A qualified service person must connect heater to gas supply. Follow all local codes.**

**IMPORTANT:** See *Connecting to Gas Supply* in your log set owner's manual for details on gas hookup.

You may run gas line from either side or back of firebox (see Figure 9, page 13). Decide which side you want to run gas line from.

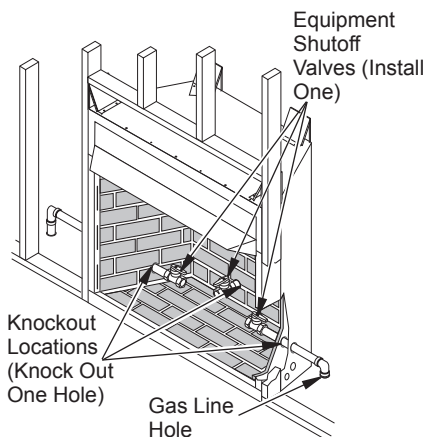
*Note: This is one option for installing shutoff valve. Check local codes for equipment shutoff valve location requirements.*

Locate recessed knockout in one firebrick liner (see Figures 9 and 10, page 13). Firmly tap center of knockout with a chisel until it is released. Carefully chisel rough edges of hole you have made to smooth edges. This hole will line up with hole in outer casing.

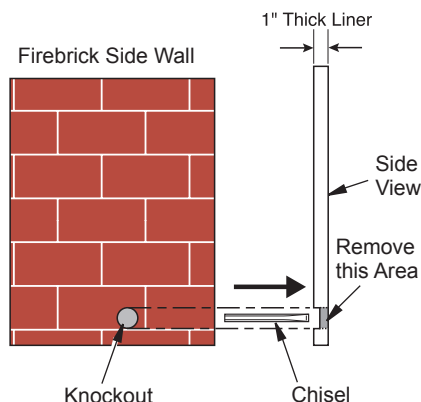
**⚠ CAUTION: Do not use excessive force to remove the knockout. Too much force may damage the firebrick concrete insert.**

# INSTALLATION

## Continued



**Figure 9 - Installing Gas Line and Equipment Shutoff Valve (Model May Vary From Illustration)**

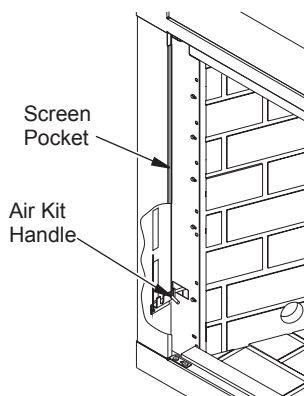


**Figure 10 - Location of Knockout for Gas Line**

## COMBUSTION AIR KIT MODEL AK4 (OPTIONAL)

An outside air kit may be installed on left side of fireplace only. Vent can be installed through any outside wall a minimum of three feet below fireplace termination cap. Handle to operate damper door for outside air inlet will be located inside the left "screen pocket" of firebox (see Figure 11). Pull handle to open or push to close.

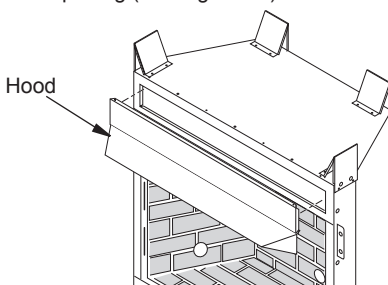
**CAUTION: Air inlet ducts are not to terminate in attic space.**



**Figure 11 - Air Kit Handle Location**

## INSTALLING FIREPLACE HOOD AND SCREEN

1. Attach hood and front panel assembly by snapping panel assembly into fireplace opening (see Figure 12).

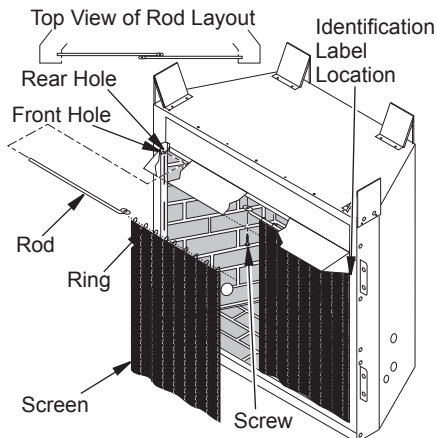


**Figure 12 - Hood Placement (Model May Vary From Illustration)**

## INSTALLATION

### Continued

2. Insert each screen rod through all rings located at top of screen.
3. Insert first rod into rear hole in left side of firebox. Fasten rod to rear hole near center of firebox using #10 x 3/8" Phillips screw provided (see Figure 13).
4. Insert other rod into front hole on right side of firebox and fasten using remaining Phillips screw.



**Figure 13 - Installing Fireplace Screen  
(Model May Vary From Illustration)**

## REPLACEMENT PARTS

*Note: Use only original replacement parts. This will protect your warranty coverage for parts replaced under warranty.*

### PARTS UNDER WARRANTY

Contact authorized dealers of this product. If they can't supply original replacement part(s), call DESA Heating, LLC at 1-866-672-6040. When calling DESA Heating, LLC, have ready:

- your name
- your address
- model and serial numbers of your heater
- how heater was malfunctioning
- purchase date

Usually, we will ask you to return the part to the factory.

### PARTS NOT UNDER WARRANTY

Contact authorized dealers of this product. If they can't supply original replacement part(s), call DESA Heating, LLC at 1-866-672-6040 for referral information. A list of authorized dealers can be found by visiting **[www.desatech.com](http://www.desatech.com)**. When calling DESA Heating, LLC, have ready:

- model and serial numbers of your heater
- the replacement part number

*Note: Firebox identification label (including model number, serial number, clearances, etc.) is located on right front edge of firebox.*

## TECHNICAL SERVICE

You may have further questions about installation, operation, or troubleshooting. If so, contact DESA Heating, LLC at 1-866-672-6040. When calling please have your model and serial numbers of your heater ready.

You can also visit DESA Heating, LLC's web site at **[www.desatech.com](http://www.desatech.com)**.

## ACCESSORIES

**NOTICE: All accessories may not be available for all fireplace models.**

Purchase these accessories from your local dealer. If they can not supply these accessories call DESA Heating, LLC at 1-866-672-6040 for information. You can also write to the address listed on the back page of this manual.

### CLEANING KIT - CCK

**All Models.** Your vent-free gas appliance requires regular cleaning and maintenance to prevent performance problems. This kit gives you tools and instructions to make it easy to clean all critical areas of your appliance.

### FIRE CRACKEL - CF6-A

Creates the sound of a real burning fire.

### HOODS

**H36B** - 36" Brushed Brass  
**H36P** - 36" Platinum  
**H36PB** - 36" Polished Brass  
**H42B** - 42" Brushed Brass  
**H42P** - 42" Platinum  
**H42PB** - 42" Polished Brass

### OUTSIDE AIR KIT

**AK4** - Complete Kit w/ Collar, Hood and 3' of Flex Tube

**AK4X** - Collar and Hood (accepts any length of 4" flex tube)

**AK4B** - 50pc. Bulk Collar Only Kits

Optional kits provide additional air to reduce build-up of condensation that occurs in today's tightly constructed homes.

## MANTELS

### 32" Mantels

**W32TU** - 32" Wall Mantel, Unfinished, Traditional

**W32TO** - 32" Wall Mantel, Oak Stain, Traditional

**C32TU** - 32" Corner Mantel, Unfinished, Traditional

**C32TO** - 32" Corner Mantel, Oak Stain, Traditional

**W32CO** - 32" Wall Mantel, Oak Stain, Classic

**C32CO** - 32" Corner Mantel, Oak Stain, Classic

**W32DO** - 32" Wall Mantel, Oak Stain, Dentil

**W32GO** - 32" Wall Mantel, Oak Stain, Georgian

**C32GO** - 32" Corner Mantel, Oak Stain, Georgian

### 36" Mantels

**W36TU** - 36" Wall Mantel, Unfinished, Traditional

**W36TO** - 36" Wall Mantel, Oak Stain, Traditional

**C36TU** - 36" Corner Mantel, Unfinished, Traditional

**C36TO** - 36" Corner Mantel, Oak Stain, Traditional

*Note: No 42" mantels offered at this time.*

### PERIMETER TRIM

**PT32** - 32" Black

**PT32B** - 32" Brushed Brass

**PT32PB** - 32" Polished Brass

**PT32P** - 32" Platinum

**PT36** - 36" Black

**PT36B** - 36" Brushed Brass

**PT36PB** - 36" Polished Brass

**PT36P** - 36" Platinum

**PT42** - 42" Black

**PT42B** - 42" Brushed Brass

**PT42PB** - 42" Polished Brass

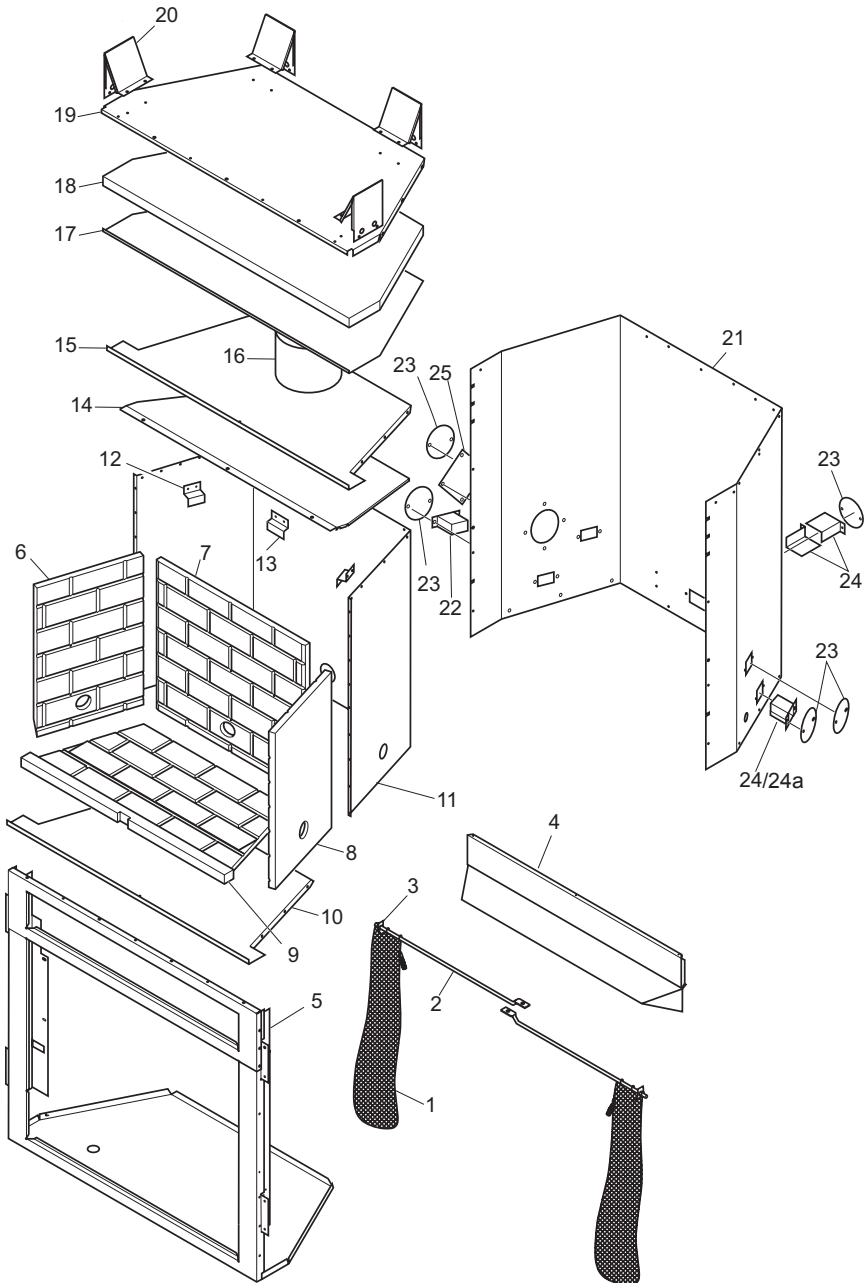
**PT42P** - 42" Platinum

### VENT FREE GAS LOGS

Please visit [www.innovationonfire.com](http://www.innovationonfire.com) and [www.vanguardheat.com](http://www.vanguardheat.com) for specific models, sizing, specifications and dealers in your area.

## PARTS

**MODELS VFF-32H-AKA, VFF-32S-AKA, VFF-36H-AKA, VFF-36S-AKA,  
VFF-42H-AKA, VFF-42S-AKA, VTFB32, VTFB32H, VTFB36, VTFB36H,  
VTFB42 AND VTFB42H**





## PARTS

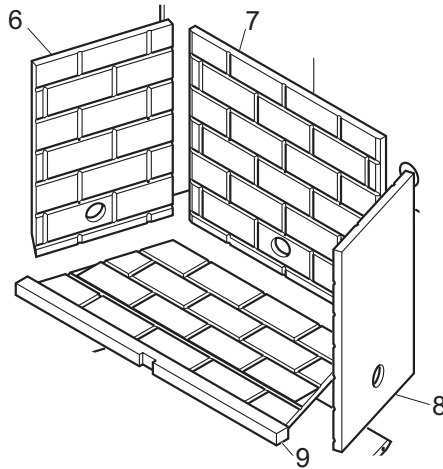
This list contains replaceable parts used in your firebox. When ordering parts, follow the instructions listed under Replacement Parts on page 14 of this manual.

KEY NO.	PART NO.	DESCRIPTION	VFF-32(H,S)-AKA	VTFB32(H)	VFF-36(H,S)-AKA	VTFB36(H)	VFF-42(H,S)-AKA	VTFB42(H)	QTY.
1	116207-01	Screen			•	•			2
1	116207-02	Screen	•	•			•	•	2
2	108700-01	Screen Rod	•	•					2
	107839-01	Screen Rod			•	•	•	•	2
3	11418	Push-On Nut	•	•	•	•	•	•	2
4	116631-01	Hood Assembly Panel	•	•					1
	116631-02	Hood Assembly Panel			•	•			1
	116631-03	Hood Assembly Panel					•	•	1
5	**	Face Weldment	•	•	•	•	•	•	1
6	see page 18	Left Refractory	•	•	•	•	•	•	1
7	see page 18	Rear Refractory	•	•	•	•	•	•	1
8	see page 18	Right Refractory	•	•	•	•	•	•	1
9	see page 18	Bottom Refractory	•	•	•	•	•	•	1
10	**	Firebox Bottom	•	•	•	•	•	•	1
11	**	Firebox Surround	•	•	•	•	•	•	1
12	116531-01	Refractory Retainer	•	•					2
	116532-01	Refractory Retainer			•	•	•	•	1
13	116532-01	Rear Refractory Retainer	•	•					1
14	108413-01	Firebox Top Shield	•	•	•	•	•	•	1
15	**	Firebox Top	•	•	•	•	•	•	1
16	**	Starter Pipe Collar	•	•	•	•	•	•	1
17	**	Insulation Pan	•	•	•	•	•	•	1
18	**	Fireplace Top Insulation	•	•	•	•	•	•	1
19	**	Fireplace Top	•	•	•	•	•	•	1
20	20280	Top Spacer	•	•	•	•	•	•	4
21	**	Fireplace Surround	•	•	•	•	•	•	1
22	108654-01	Gas Conduit Left and Right Assembly	•	•					2
23	21171	Gas Knock-Out Cover	•	•	•	•	•	•	3-5
24	107128-01	Gas Conduit	•	•	•	•	•	•	2
24a	21379	Gas Conduit			•	•	•	•	2
	21380	Gas Conduit			•	•	•	•	2
25	20042	Cover Plate	•	•	•	•	•	•	1

\*\* Not a field replaceable part.

## PARTS

MODELS VFF-32H-AKA, VFF-32S-AKA, VFF-36H-AKA, VFF-36S-AKA,  
VFF-42H-AKA, VFF-42S-AKA, VTFB32, VTFB32H, VTFB36, VTFB36H,  
VTFB42 AND VTFB42H



KEY NO.	PART NO.	DESCRIPTION	VFF-32S-AKA	VTFB32	VFF-32H-AKA	VTFB32H	QTY.
6	108434-03	Left Refractory Stacked Red	•				1
	108434-04	Left Refractory Stacked White		•			1
	122810-02	Left Refractory Herringbone Red			•		1
	122810-01	Left Refractory Herringbone White				•	1
7	108430-03	Rear Refractory Stacked Red	•				1
	108430-04	Rear Refractory Stacked White		•			1
	122808-02	Rear Refractory Herringbone Red			•		1
	122808-01	Rear Refractory Herringbone White				•	1
8	108432-03	Right Refractory Stacked Red	•				1
	108432-04	Right Refractory Stacked White		•			1
	122809-02	Right Refractory Herringbone Red			•		1
	122809-01	Right Refractory Herringbone White				•	1
9	116201-02	Bottom Refractory Red	•	•	•	•	1
	116201-05	Bottom Refractory White		•		•	1

## PARTS

This list contains replaceable parts used in your firebox. When ordering parts, follow the instructions listed under Replacement Parts on page 14 of this manual.

KEY			VFF-36S-AKA	VTFB36	VFF-36H-AKA	VTFB36H	QTY.
NO.	PART NO.	DESCRIPTION					
6	106658-04	Left Refractory Stacked Red	•				1
	106658-05	Left Refractory Stacked White		•			1
	122814-02	Left Refractory Herringbone Red			•		1
	122814-01	Left Refractory Herringbone White				•	1
7	106660-04	Rear Refractory Stacked Red	•				1
	106660-05	Rear Refractory Stacked White		•			1
	122812-02	Rear Refractory Herringbone Red			•		1
	122812-01	Rear Refractory Herringbone White				•	1
8	106659-04	Right Refractory Stacked Red	•				1
	106659-05	Right Refractory Stacked White		•			1
	122813-02	Right Refractory Herringbone Red			•		1
	122813-01	Right Refractory Herringbone White				•	1
9	116201-01	Bottom Refractory Red	•		•		1
	116201-04	Bottom Refractory White		•		•	1

KEY			VFF-42S-AKA	VTFB42	VFF-42H-AKA	VTFB42H	QTY.
NO.	PART NO.	DESCRIPTION					
6	107812-04	Left Refractory Stacked Red	•				1
	107812-05	Left Refractory Stacked White		•			1
	122818-02	Left Refractory Herringbone Red			•		1
	122818-01	Left Refractory Herringbone White				•	1
7	107816-04	Rear Refractory Stacked Red	•				1
	107816-05	Rear Refractory Stacked White		•			1
	122816-02	Rear Refractory Herringbone Red			•		1
	122816-01	Rear Refractory Herringbone White				•	1
8	107814-04	Right Refractory Stacked Red	•				1
	107814-05	Right Refractory Stacked White		•			1
	122817-02	Right Refractory Herringbone Red			•		1
	122817-01	Right Refractory Herringbone White				•	1
9	116201-03	Bottom Refractory Red	•		•		1
	116201-06	Bottom Refractory White		•		•	1

---

# WARRANTY

---

## KEEP THIS WARRANTY

Model (located on product or identification tag) \_\_\_\_\_

Serial No. (located on product or identification tag) \_\_\_\_\_

Date Purchased \_\_\_\_\_

Keep receipt for warranty verification.

## DESA HEATING, LLC LIMITED WARRANTIES

### New Products

**Standard Warranty:** DESA Heating, LLC warrants this new product and any parts thereof to be free from defects in material and workmanship for a period of four (4) years from the date of first purchase from an authorized dealer provided the product has been installed, maintained and operated in accordance with DESA Heating, LLC's warnings and instructions.

For products purchased for commercial, industrial or rental usage, this warranty is limited to 90 days from the date of first purchase.

### Factory Reconditioned Products

**Limited Warranty:** DESA Heating, LLC warrants factory reconditioned products and any parts thereof to be free from defects in material and workmanship for 30 days from the date of first purchase from an authorized dealer provided the product has been installed, maintained and operated in accordance with DESA Heating, LLC's warnings and instructions.

### Terms Common to All Warranties

The following terms apply to all of the above warranties:

Always specify model number and serial number when contacting the manufacturer. To make a claim under this warranty the bill of sale or other proof of purchase must be presented.

This warranty is extended only to the original retail purchaser when purchased from an authorized dealer, and only when installed by a qualified installer in accordance with all local codes and instructions furnished with this product.

This warranty covers the cost of part(s) required to restore this product to proper operating condition and an allowance for labor when provided by a DESA Heating, LLC Authorized Service Center or a provider approved by DESA Heating, LLC. Warranty parts must be obtained through authorized dealers of this product and/or DESA Heating, LLC who will provide original factory replacement parts. Failure to use original factory replacement parts voids this warranty.

Travel, handling, transportation, diagnostic, material, labor and incidental costs associated with warranty repairs, unless expressly covered by this warranty, are not reimbursable under this warranty and are the responsibility of the owner.

Excluded from this warranty are products or parts that fail or become damaged due to misuse, accidents, improper installation, lack of proper maintenance, tampering, or alteration(s).

This is DESA Heating, LLC's exclusive warranty, and to the full extent allowed by law; this express warranty excludes any and all other warranties, express or implied, written or verbal and limits the duration of any and all implied warranties, including warranties of merchantability and fitness for a particular purpose to four (4) years on new products and 30 days on factory reconditioned products from the date of first purchase. DESA Heating, LLC makes no other warranties regarding this product.

DESA Heating, LLC's liability is limited to the purchase price of the product, and DESA Heating, LLC shall not be liable for any other damages whatsoever under any circumstances including indirect, incidental, or consequential damages.

Some states do not allow limitations on how long an implied warranty lasts or the exclusion or limitation of incidental or consequential damages, so the above limitation or exclusion may not apply to you.

This warranty gives you specific legal rights, and you may also have other rights which vary from state to state.

For information about this warranty contact:



116208 01

NOT A UPC



DESA Heating, LLC  
2701 Industrial Drive  
Bowling Green, KY 42101  
www.desatech.com  
1-866-672-6040

116208-01  
Rev. G  
09/08