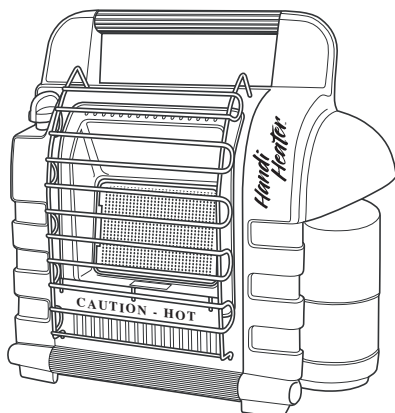




*Handi-Heater*TM

PORTABLE PROPANE/LP HEATER OWNER'S OPERATION AND INSTALLATION MANUAL For Recreational and Commercial Use



WARNING: If the information in this manual is not followed exactly, a fire or explosion may result causing property damage, personal injury, or loss of life.

- Do not store or use gasoline or other flammable vapors and liquids in the vicinity of this or any other appliance.
- **WHAT TO DO IF YOU SMELL GAS**
 - Do not try to light any appliance.
 - Do not touch any electrical switch; do not use any phone in your building.
 - Immediately call your gas supplier from a neighbor's phone. Follow the gas supplier's instructions.
 - If you cannot reach your gas supplier, call the fire department.
- Installation and service must be performed by a qualified installer, service agency, or the gas supplier.

WARNING: Improper installation, adjustment, alteration, service, or maintenance can cause injury or property damage. Refer to this manual for correct installation and operational procedures. For assistance or additional information consult a qualified installer, service agency, or the gas supplier.

WARNING: This is an unvented gas-fired heater. It uses air (oxygen) from the room in which it is installed. Provisions for adequate combustion and ventilation air must be provided.

This appliance is only for use with the type of gas indicated on the rating plate. This appliance is not convertible for use with other gases.

TABLE OF CONTENTS

Safety Information	2	Troubleshooting	10
Local Codes	4	Specifications	13
Product Identification	5	Technical Service	13
Unpacking	5	Service Hints	13
Product Features	5	Accessories	13
Propane/LP Supply	5	Replacement Parts	13
Installation	5	Illustrated Parts Breakdown and Parts List	14
Lighting and Operating Instructions	6	Warranty Information	Back Cover
Cleaning and Maintenance	8		

SAFETY INFORMATION

⚠ WARNING: This product contains and/or generates chemicals known to the state of California to cause cancer or birth defects, or other reproductive harm.

IMPORTANT: Read this owner's manual carefully and completely before trying to assemble, operate, or service this heater. Improper use of this heater can cause serious injury or death from burns, fire, explosion, electrical shock, and carbon monoxide poisoning.

⚠ DANGER: Carbon monoxide poisoning may lead to death!

When used without adequate combustion and ventilation air, this heater may give off excessive carbon monoxide, an odorless, poisonous gas.

⚠ WARNING: Early signs of carbon monoxide poisoning resemble the flu, with headaches, dizziness, and nausea. If you have these signs, the heater may not be working properly. Get fresh air at once! Have heater serviced.

Some people, including pregnant women, people with heart or lung disease, anemia, those under the influence of alcohol, and those at high altitudes, are more affected by carbon monoxide than others.

SAFETY INFORMATION

Continued

Propane/LP Gas: Propane/LP gas is odorless. An odor-making agent is added to propane/LP gas. The odor helps you detect a fuel gas leak. However, the odor added to propane/LP gas can fade. Propane/LP gas may be present even though no odor exists.

Make certain you read and understand all warnings. Keep this manual for reference. It is your guide to safe and proper operation of this heater.



WARNING: Any change to this heater or its controls can be dangerous.



WARNING: Do not use any accessory not approved for use with this heater.



WARNING: If the recreational or commercial enclosure does not have a window or roof vent, Do not use this heater inside.

This heater should be inspected before each use. Frequent cleaning may be required. The control compartments, burners and circulating air passageways of the heater must be kept clean.

Due to high temperatures, the appliance should be located out of traffic and away from combustible materials.

Children and adults should be alerted to the hazard of high surface temperature and should stay away to avoid burns or clothing ignition.

Do not place clothing or other flammable material on or near the appliance. Never place any objects on the heater.

Heater will remain hot for a time after shutdown. Allow surface to cool before touching.

Young children should be carefully supervised when they are near the heater.

Any safety screen or guard removed for servicing the appliance must be replaced prior to operating the heater.

Keep the appliance area clear and free from combustible materials, gasoline and other flammable vapors and liquids.

1. Install and use heater with care. Follow all local ordinances and codes. In the absence of local ordinances and codes, refer to the *Standard for Storage and Handling of Liquefied Petroleum Gas, ANSI/NFPA 58* and the *Natural Gas Installation Code, CAN/CGA B149.2*. This instructs on the safe storage and handling of propane/LP gases.
2. This appliance is only for use with the type of gas indicated on the rating plate. This appliance is not convertible for use with other gases.
3. This heater may be used in a recreational enclosure or temporary construction work enclosure with a remote refillable propane/LP cylinder **ONLY** when the cylinder is located outdoors and the heater is used with the hose kit 100427-01. **NEVER** bring a refillable propane/LP cylinder indoors. A fire or explosion can occur causing property damage, serious injury or death.
4. Use only the factory preset regulator provided with the heater. Use only replacement pressure regulators specified in this manual.
5. If used, inspect the hose before each use of the heater. If it is evident there is excessive abrasion or wear, or the hose is cut, it must be replaced prior to the heater being put into operation. Use replacement hose assembly kit 100427-01 (see *Accessories*, page 13).
6. Use only propane gas set up for vapor withdrawal.
7. This heater shall not be installed in a bedroom or bathroom.

SAFETY INFORMATION

Continued

8. This heater needs fresh, outside air ventilation to run properly. This heater has an Oxygen Depletion Sensing (ODS) safety shutoff system. The ODS shuts down the heater if not enough fresh air is available. You must provide a minimum 10 square inches of ventilation air for adequate combustion.
9. If heater shuts off, do not relight until you provide fresh, outside air. If heater keeps shutting off, have it serviced.
10. Keep all air openings in front and bottom of heater clear and free of debris. This will insure enough air for proper combustion.
11. Do not use heater if any part has been under water. Immediately call a qualified service technician to inspect the room heater and to replace any part of the control system and any gas control which has been under water.
12. When heater is placed on the ground, make sure the ground is level and keep any objects at least 24 inches from the front of the heater. This heater is equipped with a tip over switch that will shut the heater off if the heater tips over. However, do not leave heater unattended or where children may cause the heater to tip over. Never operate the heater while sleeping!
13. Gas pressure at heater is regulated and fixed at 11" W.C. When using a remote hose connection do not regulate or reduce propane tank supply pressure to heater!
14. Regulator in heater must always be in place during operation.
15. Turn off and let cool before servicing. Only a qualified service person should service and repair heater.
16. Turn off propane/LP supply when not in use.
17. Check heater for damage before each use. Do not use a damaged heater.
18. Do not alter heater. Keep heater in its original state.
19. Do not use heater if altered.
20. Before using the heater provide adequate ventilation. An area of 10 square inches of opening of a window or roof vent is needed for adequate combustion and ventilation air.
21. This heater is safe for indoor use in small recreational enclosures, having means for providing combustion air and ventilation, such as enclosed porches, cabins, fishing huts, trailers, tent trailers, tents, truck caps and vans. It may be used for emergency indoor heating when connected to a disposable 1 lb. propane/LP cylinder and for indoor use in commercial enclosures, having means for providing combustion air and ventilation, such as construction trailers or temporary work enclosures.
22. When the heater is cold or at room temperature, it will take a few minutes for the burner tile to turn bright orange. This is normal and the heater is working properly. If burner tile is visibly flaming, turn heater off and call a qualified service technician.
23. When the unit is lit, there should be about a quarter inch border around the tile that will not turn bright orange. This is normal.
24. When operating the heater for the first time, the top area of the reflector may discolor. This is also normal and is no reason for concern.
25. When operating the heater at altitudes over 7,000 feet above sea level, the unit may not burn as bright as in lower altitudes. This is normal. At higher altitudes, the heater may shut-off. If this happens, provide fresh air, wait 5 minutes and relight heater.
26. Operating time will vary depending on the heater setting and the supply cylinder size. 3 to 6 hours on a 1 lb. cylinder. 48 to 110 hours on a 20 lb. cylinder (based on HI and LO settings).
27. Moving heater when lit or bumping heater while setting it down may cause tip over switch to shut off heater. If this happens relight heater.

LOCAL CODES

Install and use heater with care. Follow all local codes. In the absence of local codes, use the latest edition of *National Fuel Gas Code, ANSI Z223.1/NFPA 54**.

*Available from:

American National Standards Institute, Inc.
1430 Broadway
New York, NY 10018
National Fire Protection Association, Inc.
Batterymarch Park
Quincy, MA 02269

PRODUCT IDENTIFICATION

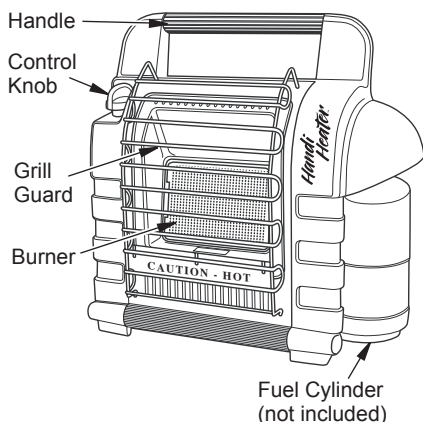


Figure 1 - Portable Propane/LP Gas Heater

UNPACKING

1. Remove heater from carton.
2. Remove all protective packaging applied to heater for shipment.
3. Check heater for any shipping damage. If heater is damaged, promptly return to dealer where you bought heater.

PRODUCT FEATURES

SAFETY PILOT

This heater has a pilot with an Oxygen Depletion Sensing (ODS) safety shutoff system. The ODS/pilot is a required feature for vent-free room heaters. The ODS/pilot shuts off the heater if there is not enough fresh air.

PIEZO IGNITION SYSTEM

This heater has a piezo ignitor. This system requires no matches, batteries, or other sources to light heater.

PROPANE/LP SUPPLY

Propane/LP gas and propane/LP tank(s) are to be furnished by the user. The propane/LP cylinder to be used must be constructed and marked in accordance with the specifications for the propane/LP gas cylinders of the U.S. Department of Transportation (DOT).

Use this heater only with a propane/LP vapor withdrawal supply system. See Chapter 5 of the *Standard for Storage and Handling of Liquefied Petroleum Gas, ANSI/NFPA 58* and/or *CAN/CGA B149.2*. Your local library or fire department will have this booklet.

The amount of propane/LP gas ready for use from propane/LP tanks varies. Two factors decide this amount:

1. The amount of propane/LP gas in tank(s)
2. The temperature of tank(s)

INSTALLATION

CHECK GAS TYPE

Use only propane/LP gas. If your gas supply is not propane/LP, do not use heater. Call dealer where you bought heater for proper type heater or appropriate fuel supply.

⚠ WARNING: This appliance is equipped for propane/LP gas. Field conversion is not permitted.

LOCATING HEATER

⚠ WARNING: Maintain the minimum clearances shown in Figure 2, page 6. If you can, provide greater clearances from floor, ceiling, and joining wall.

⚠ WARNING: Never use the heater

- in a bathroom
- where curtains, furniture, clothing, or other flammable objects are less than 36 inches from the front, top, or sides of the heater
- as a fireplace insert
- in high traffic areas
- in windy or drafty areas

INSTALLATION

Continued

⚠ CAUTION: If you use the heater in a home garage

- heater pilot and burner must be at least 18 inches above floor
- locate heater where moving vehicle will not hit it

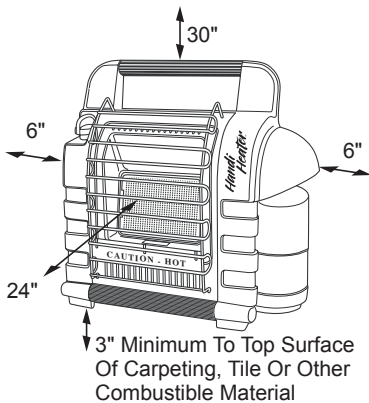


Figure 2 - Minimum Clearances to Combustible Material

LIGHTING AND OPERATING INSTRUCTIONS

⚠ WARNING: Always inspect propane cylinder and heater propane connections for damage, dirt, and debris before attaching propane cylinder. Do not use if head of cylinder is damaged, punctured or deteriorated.

⚠ WARNING: Always attach or detach cylinder outdoors away from flames, other ignition sources, and only when heater is cool to touch. Never smoke when attaching or removing propane/LP cylinder or making remote connections!

⚠ DANGER: NEVER bring a refillable propane cylinder indoors. A fire or explosion can occur causing property damage, serious injury or death!

Use only propane/LP gas cylinders marked in accordance with the U.S. Department of Transportation (DOT).

Heater and attached cylinder must be in an upright position during operation.

FOR USE WITH DISPOSABLE 1 LB. PROPANE CYLINDERS

Use only 16.4 oz. (1 lb.) disposable cylinders that mate with No. 600 valve connection.

To Start Heater

1. Make sure four-position control knob is in OFF position (see Figure 3).
2. Screw 1 lb. disposable propane/LP gas supply cylinder clockwise (from bottom) into portable heater until hand-tight.
3. Check cylinder connection for leaks with soapy water at the threaded connection under the domed plastic cover where the cylinder screws into the regulator. See warning on plastic cover.
4. Depress and turn control knob counterclockwise to PILOT position and hold for 30-60 seconds.
5. Depress red spark ignition button to light pilot flame (repeat until pilot lights) and continue to hold control knob down and at PILOT position for 30-60 seconds to enable Pilot Light Safety System.

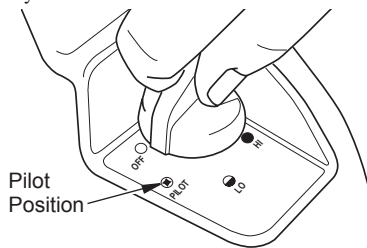


Figure 3 - Control Knob Positions

LIGHTING AND OPERATING INSTRUCTIONS


Continued

6. Fully turn control knob to HI position to light burner tile. Leave on HI position until burner tile turns bright orange.
7. After burner tile has turned bright orange, adjust heat output by turning control knob to desired position (LO or HI setting),


Do not operate heater unless control knob is secured in a position marked HI, LO or PILOT.

To Shut Off Heater

Slightly push down and turn control knob clockwise to OFF position.

 **CAUTION: After turning heater off, wire guard will remain hot. Allow to thoroughly cool before storing.**

Do not operate, store or remove cylinder near flammable items or ignition sources.

 **WARNING: Propane/LP gas cylinders must be disconnected from heater when not in use!**

FOR USE WITH HOSE CONNECTED TO A REMOTE CYLINDER, MAXIMUM SIZE 20 LBS

This Heater may be used in a recreational enclosure or temporary construction work enclosure with a remote refillable propane/LP cylinder ONLY when the cylinder is located outdoors and the heater is used with DESA Heating Products hose part number 100427-01.

Inspect the hose before each use of the heater. If there is excessive abrasion or wear, or the hose is cut, replace prior to using the heater with one of the DESA Heating Products hose numbers shown above.


The propane cylinder must include a listed overfilling protection device as well as a collar to protect the cylinder valve.

1. Make sure four-position control knob is in OFF position (see Figure 3, page 6).
2. Screw hose connector into regulator on heater and screw connector on other end of hose into propane/LP gas supply cylinder valve. Tighten all hose connections.
3. Check all hose connections for leaks with soapy water at the threaded connection under the domed plastic cover where the hose connector screws into the regulator and at propane/LP gas supply cylinder. See warning on plastic cover.
4. Open valve at propane/LP gas supply cylinder.
5. Depress and turn control knob counterclockwise to PILOT position and hold for 1 to 2 minutes. This may take longer to purge air from the supply hose depending on the length of the hose being used.
6. Depress red spark ignition button to light pilot flame (repeat until pilot lights) and continue to hold control knob down and at PILOT position for 30-60 seconds to enable Pilot Light Safety System.
7. Fully turn control knob to HI position to light burner tile. Leave on HI position until burner tile turns bright orange.
8. After burner tile has turned bright orange, adjust heat output by turning control knob to desired position (LO or HI setting).

Do not operate heater unless control knob is secured in a position marked HI, LO or PILOT.

To Shut Off Heater

1. Shut off propane/LP gas at supply tank, allow heater to use up propane/LP in supply line until heater shuts off, then slightly push down and turn control knob clockwise to OFF position.

 **CAUTION: After turning heater off, wire guard will remain hot. Allow to thoroughly cool before storing.**

2. Turn off gas at propane/LP gas supply cylinder.

LIGHTING AND OPERATING INSTRUCTIONS

Continued

IMPORTANT: When not in use, the gas must be turned off at the propane/LP gas supply cylinder. When the propane/LP gas supply cylinder is not disconnected from the heater, the heater and the cylinder must be stored outdoors, in a well ventilated space, out of reach of children, and must not be stored in a building, garage or any other enclosed area.

IMPORTANT: Indoor storage of the heater is permissible only if the cylinder is disconnected and removed from the heater. Cylinders must be stored outdoors out of the reach of children and must not be stored in a building, garage or any other enclosed area.

CLEANING AND MAINTENANCE

⚠ WARNING: Turn off heater and let cool before cleaning.

⚠ CAUTION: You must keep control areas, burner, and circulating air passageways of heater clean. Inspect these areas of heater before each use. Have heater inspected yearly by a qualified service person.

⚠ CAUTION: You must check and keep burner/venturi tubes clean of insect and insect nest. A clogged tube can lead to a fire.

⚠ WARNING: Failure to keep the primary air opening(s) of the burner(s) clean may result in sooting and property damage.

ODS/PILOT AND BURNER

Use a vacuum cleaner, pressurized air, or small, soft bristled brush to clean.

BURNER PILOT AIR INLET

The primary air inlet holes allow the proper amount of air to mix with the gas. This provides a clean burning flame. Keep these holes clear of dust, dirt, and lint. Clean these air inlet holes prior to each heating season. Blocked air holes will create soot. We recommend that you clean the unit every three months during operation and have heater inspected yearly by a qualified service person.

We also recommend that you keep the burner tube and pilot assembly clean and free of dust and dirt. To clean these parts we recommend using compressed air no greater than 30 PSI. Your local computer store, hardware store, or home center may carry compressed air in a can. You can use a vacuum cleaner in the blow position. If using compressed air in a can, please follow the directions on the can. If you don't follow directions on the can, you could damage the pilot assembly.

Always keep the heater area clear and free from combustible materials, gasoline and other flammable vapors and liquids.

Keep the vent areas (slots in the bottom and the top at the front of heater) clear at all times.

Visually inspect the pilot flame and burner periodically during use. The pilot flame should be blue in color (not yellow) and will extend beyond the thermocouple. The flame will surround the thermocouple just below the tip. See Figure 4. A slight yellow flame may occur where the pilot flame and main burner flame meet. The burner should be bright orange (with a slight blue color around the border, a red-orange haze that is visible on the ceramic tile is acceptable) and without a noticeable flame. A blue flame that rolls out at the top of the ceramic tile indicates an accumulation of dust, lint or spider webs inside the casing assembly and main burner assembly. If the pilot is yellow or the burner has a noticeable flame, cleaning may be required. Use the following procedure to inspect the casing assembly and main burner assembly.

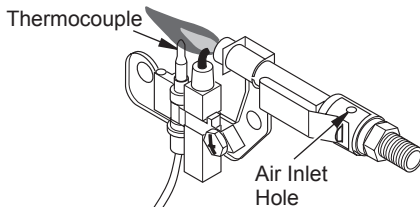


Figure 4 - Pilot

CLEANING AND MAINTENANCE

Continued

It is necessary to periodically check the burner orifice and burner venturi tube to make sure they are clear of insects, nests or spider webs that may accumulate over time. A clogged tube can lead to a fire.

1. Allow heater to thoroughly cool before performing any maintenance.
2. Remove disposable 1 lb. cylinder from heater or turn OFF gas supply at remote cylinder valve, and disconnect hose from heater.
3. Remove wire guard from front of heater by gently bending to remove from holes in front cover.
4. Remove (1) burner assembly retaining screw from bottom of the heater.
5. Pull burner assembly from front of the heater.
6. Inspect interior of casing assembly for accumulation of dust, lint or spider webs. If necessary, clean interior of casing assembly with a vacuum cleaner or apply air pressure. Do not damage any components within casing assembly when you are cleaning.
7. Inspect and clean main burner orifice (mounted to pilot bracket with jam nut) by using a vacuum or apply air pressure at orifice opening.
8. Inspect and clean pilot (mounted to bracket) by using a vacuum or apply air pressure through the air holes in the pilot (see Figure 4, page 8).



WARNING: Never use needles, wires, or similar cylindrical objects to clean the pilot to avoid damaging the calibrated ruby that controls the gas flow.

9. Apply air pressure into ceramic tile of burner assembly and the venturi tube (with cone on end) to remove dust, lint or spider webs.
10. Make sure the burner tile assembly is completely seated against the reflector.
11. Carefully slide burner assembly back into casing assembly making sure to center reflector flange with the casing opening and hold in place while installing burner assembly screw in the bottom of the heater.
12. Install wire guard by gently bending and inserting into the four holes in the front cover.

CABINET

Air Passageways

Use a vacuum cleaner or pressurized air to clean.

Exterior

Use a soft cloth dampened with a mild soap and water mixture. Wipe the cabinet to remove dust.

TROUBLESHOOTING

⚠ WARNING: Turn off heater and let cool before servicing. Only a qualified service person should service and repair heater.

⚠ CAUTION: Never use a wire, needle, or similar object to clean ODS/pilot. This can damage ODS/pilot unit.

Note: All troubleshooting items are listed in order of operation.

OBSERVED PROBLEM	POSSIBLE CAUSE	REMEDY
When ignitor button is pressed, there is no spark at ODS/pilot	1. Ignitor electrode positioned wrong	1. Replace pilot assembly
	2. Ignitor electrode broken	2. Replace pilot assembly
	3. Ignitor electrode not connected to ignitor cable	3. Reconnect ignitor cable
	4. Ignitor cable pinched or wet	4. Free ignitor cable if pinched by any metal or tubing. Keep ignitor cable dry
	5. Piezo ignitor nut is loose	5. Tighten nut holding piezo ignitor to heater cabinet. Nut is located inside heater cabinet at top
	6. Broken ignitor cable	6. Replace ignitor cable
	7. Bad piezo ignitor	7. Replace piezo ignitor
When ignitor button is pressed, there is spark at ODS/pilot but no ignition	1. Gas supply turned off or equipment shutoff valve closed	1. Turn on gas supply or open equipment shutoff valve
	2. Control knob not in PILOT position	2. Turn control knob to PILOT position
	3. Control knob not pressed in while in PILOT position	3. Press in control knob while in PILOT position
	4. Air in gas lines when installed	4. Continue holding down control knob. Repeat igniting operation until air is removed
	5. ODS/pilot is clogged	5. Clean ODS/pilot (see <i>Cleaning and Maintenance</i> , page 8) or replace ODS/pilot assembly

TROUBLESHOOTING

Continued

OBSERVED PROBLEM	POSSIBLE CAUSE	REMEDY
ODS/pilot lights but flame goes out when control knob is released	<ol style="list-style-type: none"> 1. Control knob not fully pressed in 2. Control knob not pressed in long enough 3. Safety interlock system has been triggered 4. Thermocouple connection loose at control valve 5. Pilot flame not touching thermocouple, which allows thermocouple to cool, causing pilot flame to go out. This problem could be caused by one or both of the following: A) Low gas pressure B) Dirty or partially clogged ODS/pilot 6. Thermocouple damaged 7. Control valve damaged 	<ol style="list-style-type: none"> 1. Press in control knob fully 2. After ODS/pilot lights, keep control knob pressed in 30 seconds 3. Wait one minute for safety interlock system to reset. Repeat ignition operation. 4. Hand tighten until snug, then tighten 1/4 turn more 5. A) Replace propane/LP gas cylinder B) Clean ODS/pilot (see <i>Cleaning and Maintenance</i>, page 8) or replace ODS/pilot assembly 6. Replace pilot assembly 7. Replace control valve
Burner does not light after ODS/pilot is lit	<ol style="list-style-type: none"> 1. Burner orifice is clogged 2. Inlet gas pressure is too low 	<ol style="list-style-type: none"> 1. Clean burner orifice (see <i>Cleaning and Maintenance</i>, page 8) or replace burner orifice 2. Replace propane/LP gas cylinder
Delayed ignition of burner	<ol style="list-style-type: none"> 1. Manifold pressure is too low 2. Burner orifice is clogged 	<ol style="list-style-type: none"> 1. Replace propane/LP gas cylinder 2. Clean burner orifice (see <i>Cleaning and Maintenance</i>, page 8) or replace burner orifice
Burner backfiring during combustion	<ol style="list-style-type: none"> 1. Burner orifice is clogged or damaged 2. Inlet gas pressure is too low 3. Burner damaged 4. Gas regulator defective 	<ol style="list-style-type: none"> 1. Clean burner orifice (see <i>Cleaning and Maintenance</i>, page 8) or replace burner orifice 2. Replace propane/LP gas cylinder 3. Replace burner 4. Replace gas regulator
Slight smoke or odor during initial operation	<ol style="list-style-type: none"> 1. Residues from manufacturing processes 	<ol style="list-style-type: none"> 1. Problem will stop after a few hours of operation

TROUBLESHOOTING

Continued



WARNING: If you smell gas

- Shut off gas supply.
- Do not try to light any appliance.
- Do not touch any electrical switch; do not use any phone in your building.
- Immediately call your gas supplier from a neighbor's phone. Follow the gas supplier's instructions.
- If you cannot reach your gas supplier, call the fire department.

IMPORTANT: Operating heater where impurities in air exist may create odors. Cleaning supplies, paint, paint remover, cigarette smoke, cements and glues, new carpet or textiles, etc., create fumes. These fumes may mix with combustion air and create odors.

OBSERVED PROBLEM	POSSIBLE CAUSE	REMEDY
Heater produces unwanted odors	<ol style="list-style-type: none">1. Heater burning vapors from paint, hair spray, glues, etc. See IMPORTANT statement above2. Low fuel supply3. Gas leak. See Warning statement at top of page	<ol style="list-style-type: none">1. Ventilate room. Stop using odor-causing products while heater is running2. Replace propane/LP gas cylinder3. Locate and correct all leaks
Heater shuts off in use	<ol style="list-style-type: none">1. Not enough fresh air is available2. Low line pressure3. ODS/pilot is partially clogged4. Tip over switch activated from bumping heater	<ol style="list-style-type: none">1. Provide more combustion area. A minimum 10 square inches of ventilation air must be provided for adequate combustion2. Replace propane/LP gas cylinder3. Clean ODS/pilot (see <i>Cleaning and Maintenance</i>, page 8)4. Relight heater
Gas odor even when control knob is in OFF position	<ol style="list-style-type: none">1. Gas leak. See Warning statement at top of page2. Control valve defective	<ol style="list-style-type: none">1. Locate and correct all leaks2. Replace control valve
Moisture/condensation noticed on windows	<ol style="list-style-type: none">1. Not enough combustion/ventilation air	<ol style="list-style-type: none">1. Provide more combustion area. A minimum 10 square inches of ventilation air must be provided for adequate combustion

SPECIFICATIONS

Btu (Variable)	4,000/9,000
Type Gas	Propane/LP Only
Ignition	Piezo
Internal Regulator Setting	11" W.C.
Supply Pressure to Regulator	
Min (for input adjustment)	10 psi
Max	200 psi
Heater Dimensions (H x W x D)	
(Includes knobs and grill)	15" x 15" x 8 1/4"
Shipping Weight (pounds)	11

TECHNICAL SERVICE

You may have further questions about installation, operation, or troubleshooting. If so, contact DESA Heating Products' Technical Service Department at 1-866-672-6040. When calling please have your model and serial numbers of your heater ready.

You can also visit DESA Heating Products' technical service web site at www.desatech.com.

SERVICE HINTS

When Gas Pressure Is Too Low

- pilot will not stay lit
- burner will have delayed ignition
- heater will not produce specified heat
- propane/LP gas supply may be low

You may feel your gas pressure is too low. If so, replace propane/LP gas cylinder.

ACCESSORIES

Purchase this heater accessory from your local dealer. If they cannot supply this accessory, call DESA Heating Products at 1-866-672-6040 for referral information. You can also write to the address listed on the back page of this manual.

5 FT. PROPANE/LP HOSE

ASSEMBLY - 100427-01

Includes 1"-20 male throwaway cylinder thread x POL with handwheel.

REPLACEMENT PARTS

Note: Use only original replacement parts. This will protect your warranty coverage for parts replaced under warranty.

PARTS UNDER WARRANTY

Contact authorized dealer from whom you purchased this product. If they cannot supply original replacement part(s), call DESA Heating Products' Technical Service Department at 1-866-672-6040 for referral information. When contacting your dealer or DESA Heating Products, have ready:

- your name and address
- model and serial numbers of your heater
- how heater was malfunctioning
- type of gas used (propane/LP)
- purchase date

Usually, we will ask you to return the part to the factory.

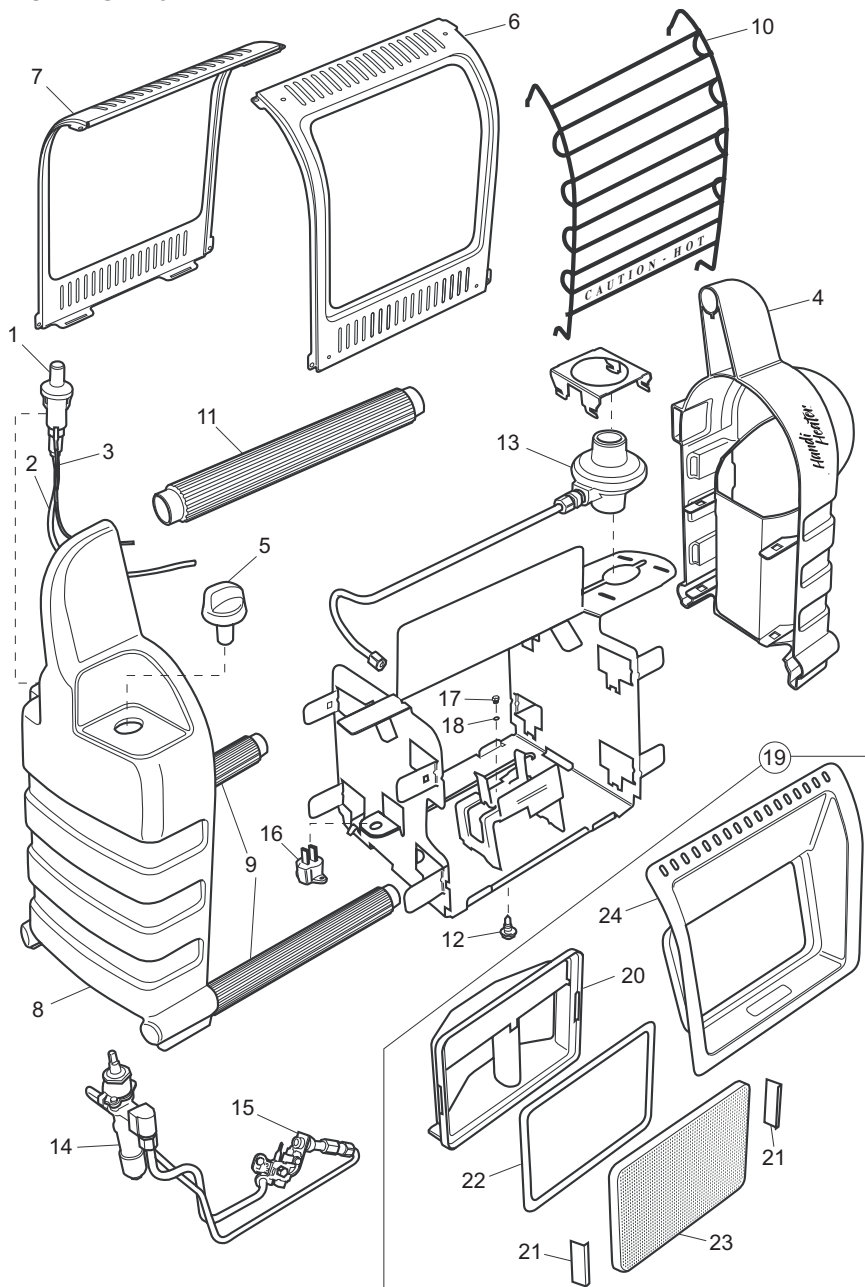
PARTS NOT UNDER WARRANTY

Contact authorized dealers of this product. If they cannot supply original replacement part(s), call DESA Heating Products at 1-866-672-6040 for referral information. When calling DESA Heating Products, have ready:

- model number of your heater
- the replacement part number

ILLUSTRATED PARTS BREAKDOWN

MODEL SPC-9



PARTS LIST

MODEL SPC-9

This list contains replaceable parts used in your heater. When ordering parts, follow the instructions listed under *Replacement Parts* on page 13 of this manual.

KEY NO.	PART NUMBER	DESCRIPTION	QTY.
1	097159-05	Piezo Ignitor	1
2	113986-01	Ignitor Wire	1
3	113987-01	Ground Wire	1
4	113988-01	Right Plastic Cover	1
5	113989-01	Fuel Control Knob	1
6	113990-01	Front Cover	1
7	113991-01	Rear Cover	1
8	113988-02	Left Plastic Cover	1
9	113992-01	Base Support Tubes	2
10	113993-01	Wire Guard	1
11	113994-01	Handle Tube	1
12	113995-01	Burner Mount Screw	1
13	113996-01	Regulator	1
14	113998-01	Control Valve	1
15	113999-01	Pilot Assembly	1
16	114000-01	Tip Switch	1
17	114001-01	Burner Orifice	1
18	114002-01	Burner Orifice O-Ring	1
19	114003-01	Burner Assembly (items 20-24)	1
20	114004-01	Burner	1
21	114005-01	Burner Tile Clip	1
22	114006-01	Burner Tile	1
23	114007-01	Burner Tile Gasket	1
24	114050-01	Burner Reflector	1
PARTS AVAILABLE - NOT SHOWN			
	113985-04	Tradename Decal	1
	114087-01	Control Position Decal	1
	114088-01	Warning Cylinder Decal	1
	114089-01	Warning Leak Test Decal	1
	114090-01	General Info Decal	1

** Not a field replacable part.

WARRANTY INFORMATION

KEEP THIS WARRANTY

Model _____

Serial No. _____

Date Purchased _____

Always specify model and serial numbers when communicating with the factory.

We reserve the right to amend these specifications at any time without notice. The only warranty applicable is our standard written warranty. We make no other warranty, expressed or implied.

LIMITED WARRANTY

VENT-FREE GAS HEATERS

DESA Heating Products warrants this product to be free from defects in materials and components for one (1) year from the date of first purchase, provided that the product has been properly installed, operated and maintained in accordance with all applicable instructions. To make a claim under this warranty the Bill of Sale or cancelled check must be presented.

This warranty is extended only to the original retail purchaser. This warranty covers the cost of part(s) required to restore this heater to proper operating condition and an allowance for labor when provided by a DESA Heating Products Authorized Service Center. Warranty part(s) MUST be obtained through authorized dealers of this product and/or DESA Heating Products who will provide original factory replacement parts. Failure to use original factory replacement parts voids this warranty. The heater MUST be installed by a qualified installer in accordance with all local codes and instructions furnished with the unit.

This warranty does not apply to parts that are not in original condition because of normal wear and tear, or parts that fail or become damaged as a result of misuse, accidents, lack of proper maintenance or defects caused by improper installation. Travel, diagnostic cost, labor, transportation and any and all such other costs related to repairing a defective heater will be the responsibility of the owner.

TO THE FULL EXTENT ALLOWED BY THE LAW OF THE JURISDICTION THAT GOVERNS THE SALE OF THE PRODUCT; THIS EXPRESS WARRANTY EXCLUDES ANY AND ALL OTHER EXPRESSED WARRANTIES AND LIMITS THE DURATION OF ANY AND ALL IMPLIED WARRANTIES, INCLUDING WARRANTIES OF MERCHANTABILITY AND FITNESS FOR A PARTICULAR PURPOSE TO ONE (1) YEAR ON ALL COMPONENTS FROM THE DATE OF FIRST PURCHASE; AND DESA HEATING PRODUCTS' LIABILITY IS HEREBY LIMITED TO THE PURCHASE PRICE OF THE PRODUCT AND DESA HEATING PRODUCTS SHALL NOT BE LIABLE FOR ANY OTHER DAMAGES WHATSOEVER INCLUDING INDIRECT, INCIDENTAL OR CONSEQUENTIAL DAMAGES.

Some states do not allow a limitation on how long an implied warranty lasts or an exclusion or limitation of incidental or consequential damages, so the above limitation on implied warranties, or exclusion or limitation on damages may not apply to you.

This warranty gives you specific legal rights, and you may also have other rights that vary from state to state.

For information about this warranty write:

DESATM
HEATING PRODUCTS
2701 Industrial Drive
P.O. Box 90004
Bowling Green, KY 42102-9004
www.desatech.com



113997 01

NOT A UPC

113997-01
Rev. A
07/04