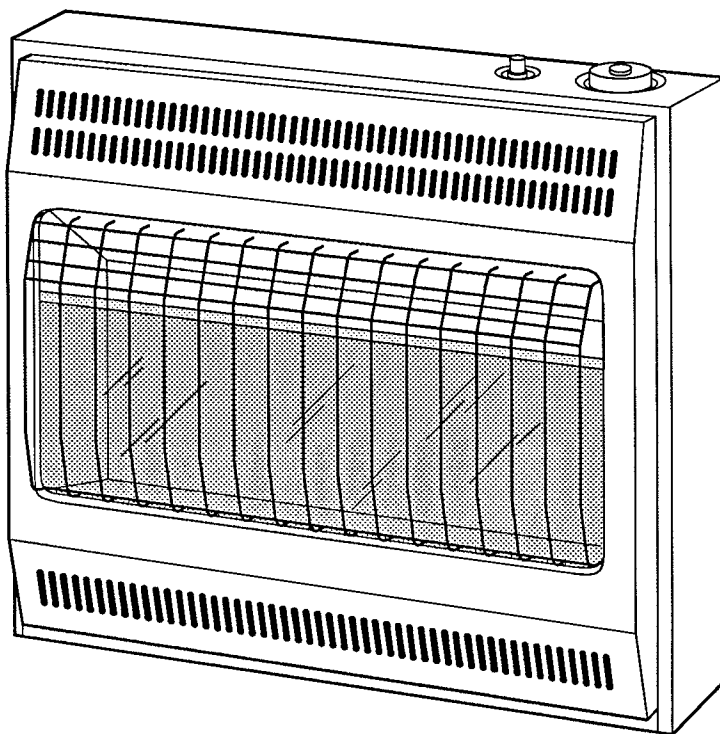


Touch'nGLOWTM

UNVENTED PROPANE GAS HEATER



Owner's Operation and Installation Manual Models TGP18T and TGP28T

FOR YOUR SAFETY

Do not store or use gasoline or other flammable vapors and liquids in the vicinity of this or any other appliance.

CAUTION:

Read all instructions carefully before starting the installation.

DO NOT use this heater in sleeping quarters, mobile homes or recreational vehicles.

FOR YOUR SAFETY

If you smell gas:

1. Open windows.
2. Don't touch electrical switches.
3. Extinguish any open flame.
4. Immediately call your gas supplier.



WARNING: Improper installation, adjustment, alteration, service or maintenance can cause injury or property damage. Refer to this manual for correct installation and operational procedures. For assistance or additional information consult a qualified installer, service agency or the gas supplier.

Save this manual for future reference.

CONTENTS

SECTION	PAGE
Safety Requirements	4
Features	
Safety Devices	5
Piezo Ignition System	5
Thermostatic Heat Control	5
Specifications	5
Unpacking	5
Local Codes	5
Installation To Wall	
Installation Items	6
Check Gas Type	6
Locating The Heater	6
Thermostat Sensing Bulb Attachment	6
Installing Heater To Wall	6,7
Installation To Gas Supply	8
Checking Gas Connection	
Pressure Testing Supply Line	8
Testing Heater Gas Connections	8
Operating Procedure	
Turning Heater "ON"	9
Turning Heater "OFF"	9
Thermostat Control Operation	9
Burner Inspection	10
Cleaning and Maintenance	10
Troubleshooting	11,12
Service Hints	12
Replacement Parts	12
Accessories	13
Illustrated Parts List	14,15
Warranty Information	Back Cover

SAFETY REQUIREMENTS

WARNINGS

IMPORTANT: Read this Owner's Manual carefully and completely before attempting to assemble, operate or service this heater. Improper use of heater can result in serious bodily injury or death due to hazards of fire, explosion, electrical shock, electrocution and carbon monoxide poisoning. **CARBON MONOXIDE POISONING MAY LEAD TO DEATH!** Early signs of carbon monoxide poisoning resemble the flu with headaches, dizziness and/or nausea. If you have these signs, the heater may not be working properly. **GET FRESH AIR AT ONCE!** Have heater serviced. Some people, such as pregnant women, persons with heart or lung disease, persons with anemia, those under the influence of alcohol and those at high altitudes are more affected by carbon monoxide than others. Make certain you have read and understood all Warnings. Keep this manual for reference. It is your guide to safe and proper operation of this appliance.

1. Use only Liquid Propane (LP) Gas.
2. **DO NOT** place the Liquid Propane (LP) supply tank inside any structure. The LP supply tank **MUST** be located OUTDOORS.
3. If you smell gas:
 - a. Shut off gas supply.
 - b. Open windows.
 - c. **DO NOT** touch electrical switches.
 - d. Extinguish any open flame.
 - e. Immediately call your gas supplier.
4. **DO NOT** install this heater in SLEEPING QUARTERS, mobile homes or recreational vehicles.
5. **DO NOT** connect this heater directly to an LP supply tank. Use an external regulator located between the heater and the LP supply tank.
6. Keep combustible materials, such as furniture, draperies and clothing at least three (3) feet away from the front, top and sides of the heater.
7. Open window an inch or two for fresh air when using heater.
8. When used without fresh air, heater may give off carbon monoxide, an odorless, poisonous gas.
9. Open a door to an adjacent room to assure adequate ventilation. Never operate heater in a small closed room.
10. If heater shuts off, **DO NOT** relight until you provide fresh air. If heater keeps shutting off, have it serviced.
11. **DO NOT** place clothing or other flammable materials on or near the room heater.
12. Children and adults should be alert to the hazards of high surface temperatures and should stay away to avoid burns or clothing ignition.
13. **DO NOT** operate heater in areas where flammable liquids, vapors or high dust content exist.
14. **DO NOT** store or use gasoline, flammable vapors and flammable liquids in the vicinity of this heater.
15. **DO NOT** locate heater in high traffic areas or in windy or drafty locations.
16. Front surface and Grill Guard are hot during operation and may cause serious burns if touched. Young children should be carefully supervised when they are in the same room as the heater.
17. If Grill Guard is removed for servicing the room heater, it must be replaced prior to operating the heater.
18. Any change to this heater or its controls can be dangerous.
19. **NEVER** attempt to service heater while it is plugged in, operating or hot.

FEATURES

1) SAFETY DEVICES

This heater is equipped with an Oxygen Depletion Sensor Shutoff System (ODS). The system is a required feature for unvented room heaters that will turn off the heater if there is not enough fresh air. Should the ODS pilot detect a decrease in oxygen level, the main burner as well as the pilot will automatically be turned off by the control valve.

2) PIEZO IGNITION SYSTEM

For lighting purpose, a piezo ignitor is incorporated in this heater which requires no matches, batteries, or other combustion sources.

3) THERMOSTATIC HEAT CONTROL

This heater is furnished with a thermostat sensing bulb and control valve. This results in maximum heating comfort and can significantly reduce gas bills.

SPECIFICATIONS

MODELS	TGP18T	TGP28T
B.T.U (Variable)	9,000/18,000	14,000/28,000
Type Gas	LP Only	LP Only
Ignition	Piezo	Piezo
Pressure Regulator Setting	8" W.C.	8" W.C.
Burner Orifice Diameter	.051" (drill size 56/.0465)	.063" (drill size 52/.0635)
Inlet Gas Pressure (Inches of Water)		
Maximum	14"	14"
Minimum	11"	11"
Dimensions, Inches (H x W x D)		
Heater	23.5 x 18.5 x 8.0	23.5 x 25.9 x 8.0
Carton	25.8 x 21.3 x 10.1	25.8 x 28.7 x 10.1
Weight (pounds)		
Heater	22	30
Shipping	27	35

UNPACKING

1. Remove the heater from carton.
2. Remove all protective materials which may have been applied to the heater for shipment.
3. Check the heater for possible shipping damage. If any damage is found, immediately notify the dealer from whom heater was purchased.
4. In the plastic bag containing this owner's manual, you should find a wall template for use in mounting your heater and a hardware package.

LOCAL CODES

Please read these instructions and check all local codes before your heater is installed. This will help you avoid needless service costs that result from causes not covered in the warranty.

The installation of this heater must conform to local codes. In the absence of local codes, the installation must conform with

The National Fuel Gas Code ANSI Z223.1-1984 and ADDENDA Z223.1a-1987 also known as NFPA 54*.

*Available from the American National Standards Institute, Inc., 1430 Broadway, New York, NY 10018 or from the National Fire Protection Association Inc., Batterymarch Park, Quincy, MA 02269.

INSTALLATION TO WALL

IMPORTANT: Installation should be done by a qualified service person in accordance with local ordinances and codes.

I. INSTALLATION ITEMS

Prior to installing the heater, make sure that all necessary tools, piping and accessories are readily available.

- 1) External Appliance Regulator (Supplied By Installer)
- 2) Piping (Check Local Codes)
- 3) Sealant (Resistant to LP Gas)
- 4) Manual Shut-Off Valve With 1/8" NPT Tap
- 5) Union
- 6) Drip Leg
- 7) Tee Joint
- 8) Pipe Wrenches

II. CHECK GAS TYPE

Use only LP Gas as indicated on heater nameplate located on the side of heater. If you observe that your gas supply is different than what is specified on the heater, do not install. Call your supplier for proper type heater.

III. LOCATING THE HEATER

The following safety precautions should be followed when determining the location of the heater:

1. **DO NOT** install heater in sleeping quarters, mobile homes or recreational vehicles.
2. **DO NOT** install heater as a fireplace insert.
3. The heater should be located to give easy access for operation, servicing and inspection.
4. **DO NOT** install in areas where curtains, drapes, clothing or other flammable materials are within 36 inches of the front, top and sides of the heater.
5. This heater has been designed for wall mounting. The clearances from the heater to combustible surfaces **MUST NOT** be less than shown in Figure 1. These are absolute minimum clearances. Greater clearances should be allowed if possible. If you want to locate your heater on a floor, away from a wall, an optional floor mounting base (see Accessories Section, page 13) is available from your dealer.
6. For improved heating efficiency, install the heater in the coldest part of the room. For better heat distribution, an optional fan kit (see Accessories Section, page 13) is available from your dealer. If optional fan is being planned for use, locate heater near an electrical outlet for necessary power. The fan mounts directly behind unit near the top.

If the heater is installed in a residential garage, the following precautions should be taken.

1. The heater pilot and burners must be at least 18 inches above the floor.
2. The heater must be located or reasonably protected, so as not to be subjected to damage by a moving vehicle.

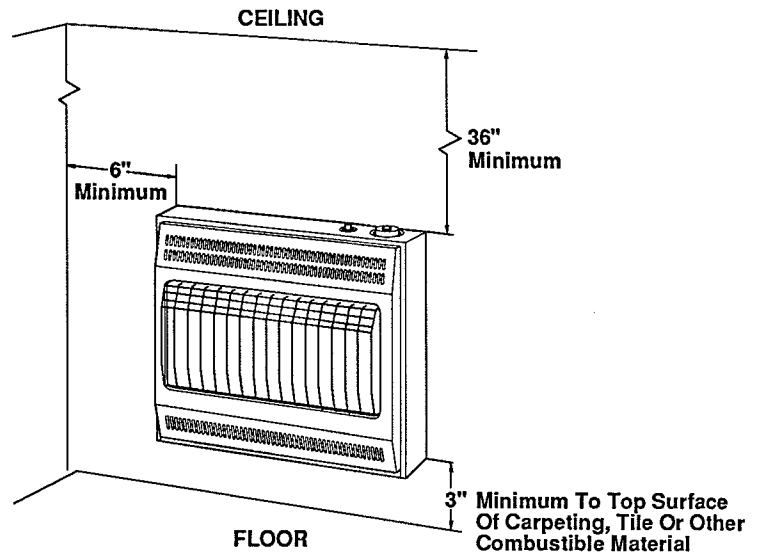


Figure 1 - Mounting Clearances

IV. THERMOSTAT SENSING BULB ATTACHMENT

The thermostat sensing bulb has been placed inside the heater for protection during shipping. The thermostat sensing bulb can be found by removing the front panel (see number V., STEP 3 of this section-page 7) and looking just under the burner assembly.

IMPORTANT: The thermostat sensing bulb must be attached to the back of heater for proper operation.

To Attach Thermostat Sensing Bulb

1. Remove thermostat sensing bulb from holders inside heater and route through slot opening in bottom of heater.
2. Position clamps on thermostat sensing bulb as illustrated below. The thermostat sensing bulb must be located on outside edge of heater.
3. Attach spacers and clamps, along with thermostat sensing bulb, to back of heater with sheet metal screws, provided in the hardware package.

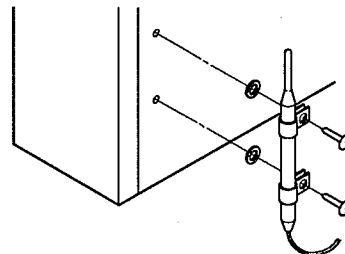


Figure 2 - Attaching Thermostat Sensing Bulb

V. INSTALLING HEATER TO WALL

STEP 1. Provided with your heater is a wall template to help mark the mounting screw locations. After determining where the heater is to be located, tape the template to the wall with the bottom of the template above the top surface of carpeting, tile or other combustible materials to

INSTALLATION TO WALL (cont.)

assure 3" minimum heater clearance. Mark the screw locations on the wall.

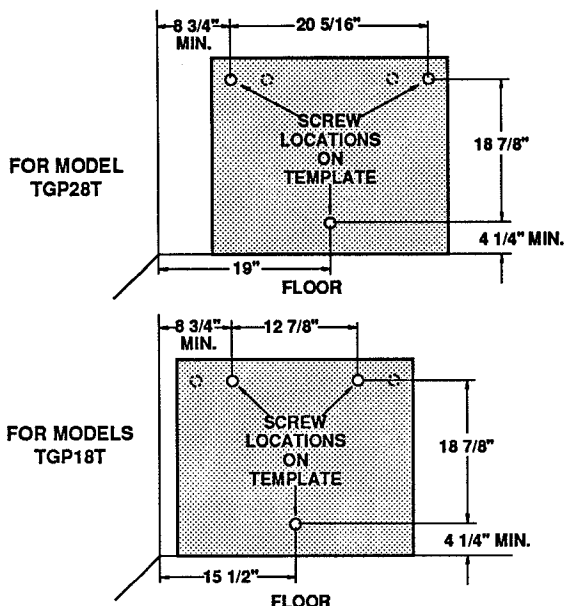
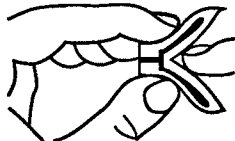


Figure 3 - Wall Template

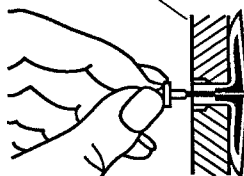
STEP 2. Remove template. After reading the instructions below, drill at the marked locations. Install the anchors and the top two (2) screws leaving 1/16 inch space between screw and wall. The bottom screw will be installed in STEP 5.

1. Use 5/16" drill bit to drill holes. For solid walls (concrete, masonry, etc.) drill a minimum of 1" deep.
2. Fold anchor.
3. Insert anchor into hole and tap flush to wall.



4. For thin walls, 1/8" to 1/4" thick, insert red key and push to "pop" open anchor wings. **Do Not Hammer Key!** For thick walls (over 1/4" thick), do not use red key.

Hollow Wall
(1/8" to 1/4" thick)



5. For all walls, place a spacer between the anchor and the screw. Tighten the top 2 screws until a 1/16" space (thickness of penny) is between the screw heads and the spacers.

Thick Wall
(over 1/4" thick)

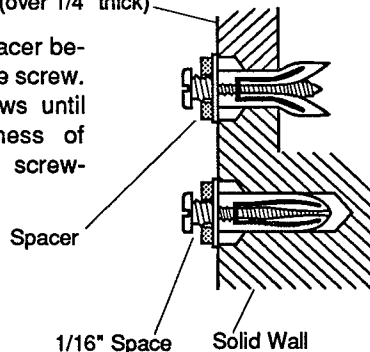


Figure 4 - Installing Anchors and Mounting Screws

STEP 3. Remove the front panel of the heater for access to mounting holes by removing the two screws near the bottom corners and pulling the bottom of the panel forward and then downward.

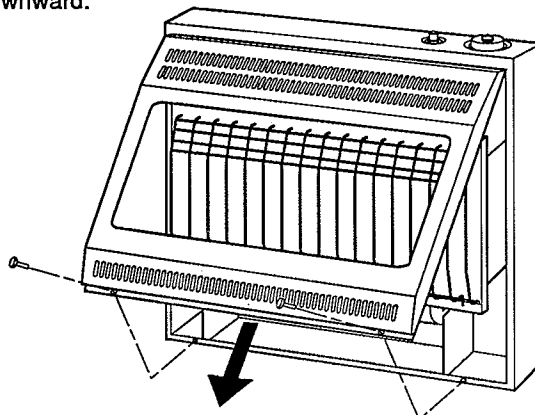


Figure 5 - Removing Front Panel

STEP 4. Two key hole slots are located on the back panel of the heater. Place the large openings of the slots over the screwheads and slide the heater down until the screws are located in the small portion of the slots.

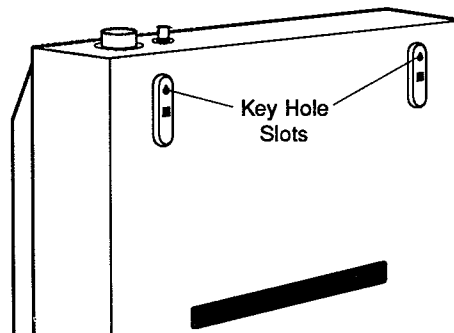


Figure 6 - Key Hole Slots

STEP 5. Secure heater to wall by installing the bottom anchor screw through the back panel into the bottom anchor with 3/16" spacer between heater and anchor. Tighten the screw so that the heater is flush to the anchor plus 1/2 turn more. Do not over tighten. Do not re-attach the front panel until gas connections have been made and checked for leaks.

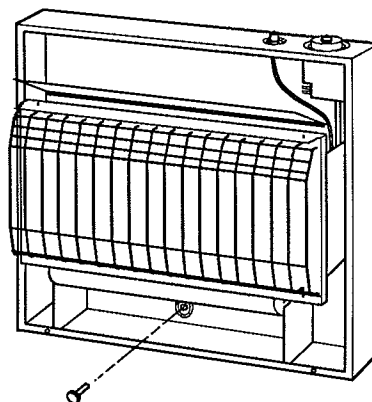


Figure 7 - Installing Bottom Anchor Screw

INSTALLATION TO GAS SUPPLY

- ⚠ WARNING:** This heater requires an external regulator (not supplied) located between heater and LP Supply Tank. This regulator must be supplied by installer to reduce incoming LP Gas pressure to a maximum of 14 inches of water. Under no circumstances, should this heater ever be hooked directly to a LP supply tank.
 - Use only new, black iron or steel pipe. Copper tubing may be acceptable in certain areas. **CHECK LOCAL CODES.**
 - The gas supply line shall be sized and installed to provide a sufficient supply of gas to meet the maximum demand of the heater without undue loss of pressure.
 - The sealant used on the threaded joints of the gas pipe must be the specific type resistant to the action of Liquid Petroleum (LP) Gas. Apply sealant lightly to male threads to ensure excess sealant does not enter lines. Any excess sealant could be forced into the pipe and result in clogged valves.
 - The supply system must include a manual shut-off valve, a union in the line and a plugged 1/8" NPT tap. The tap should be accessible for test gauge connections upstream of the gas supply connection to heater.
 - Include a drip leg (trap) in the supply line. The purpose of the drip leg is to prevent moisture and contaminants in gas supply from entering heater controls. The drip leg should be readily accessible to permit cleaning or emptying. A drip leg should not be located where the condensate is likely to freeze. Failure to use drip leg can result in operational difficulties in heater.
- | Typical Installation | Supply Line |
|----------------------|-----------------|
| TGP18T | 3/8" or greater |
| TGP28T | 1/2" or greater |

IMPORTANT: Pressure Regulator must be held with wrench when connecting gas piping and/or fittings to Pressure Regulator.

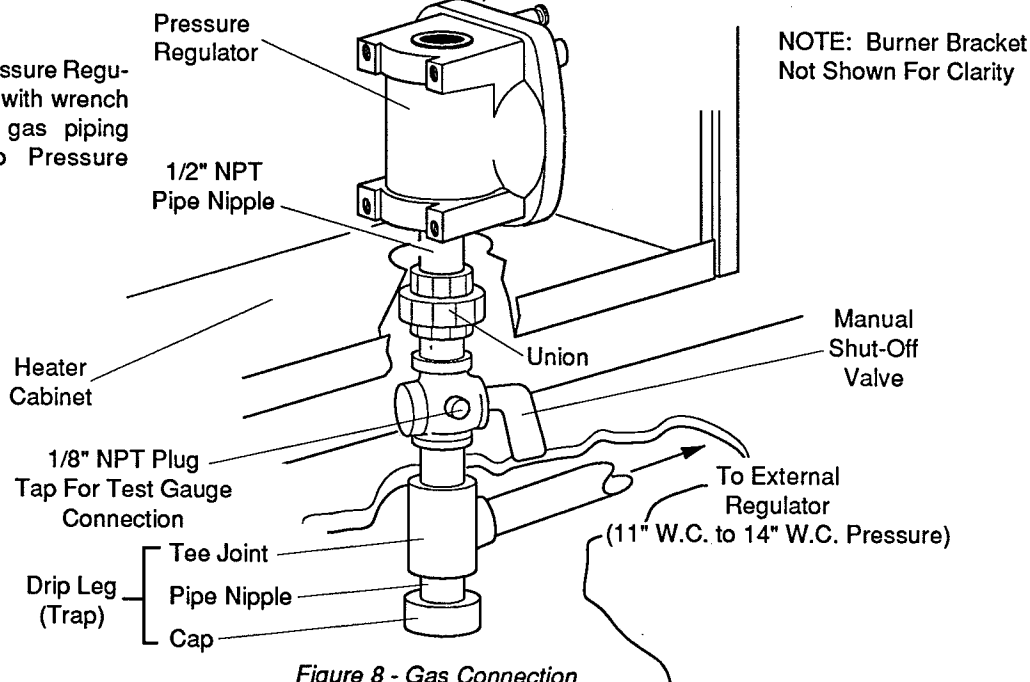


Figure 8 - Gas Connection

CHECKING GAS CONNECTION

⚠ WARNING: All gas piping and connections must be tested for leaks after installation or servicing. All leaks must be corrected immediately.

⚠ WARNING: NEVER USE AN OPEN FLAME TO CHECK FOR A LEAK. Apply a solution of liquid detergent and water to all connections. Bubbles forming indicate leaks that must be corrected.

PRESSURE TESTING SUPPLY LINE

- The heater and its individual manual shut-off valve must be disconnected from the gas supply piping system during any pressure testing of that system when test pressures are in excess of 1/2 PSIG.
- The heater must be isolated from the gas supply piping system by closing its individual manual shut-off valve

during any pressure testing of the gas supply piping system when pressures are equal to or less than 1/2 PSIG.

TESTING HEATER GAS CONNECTIONS

- Make sure the heater's control knob is in the OFF position. Open the manual shut-off valve. Apply a solution of liquid detergent and water to all connections from supply line to thermostat gas valve. Bubbles forming indicate leaks that must be corrected.
- Light heater by following instructions in Operating Procedure Section (page 9). Check all remaining internal connections for leaks.
- Turn off heater and re-attach front panel.

OPERATING PROCEDURE

CAUTION: After complete shut-down, you must wait five (5) minutes prior to relighting pilot.

TURNING HEATER "ON"

1. Be sure the manual shut-off valve is fully open.
2. Turn the control knob to the OFF position. If you smell gas, **STOP**, locate and correct any gas leaks.
3. Turn the control knob counterclockwise to the PILOT position and fully depress control knob for 5 seconds.

NOTE: The first time the heater is operated after being connected to the gas supply, the control knob may have to be depressed for approximately 30 seconds to allow air to bleed from the gas system.

4. Keeping the control knob depressed, push down and release the ignitor button to light pilot. The pilot is located on the left side of the burner and can be seen through the glass panel. It may be necessary to repeatedly press the ignitor button until gas reaches the pilot.

NOTE: If the ignitor does not light the pilot, refer to Troubleshooting, page 11, and contact a qualified service person. Until repairs are made, the pilot can be lit with a match. To light the pilot with a match, remove the front panel by removing the two screws located at the bottom corners and pulling the bottom of the panel forward and then down (See Figure 5, page 7). Reinstall front panel after pilot is lit.

5. Continue to hold the control knob down for 30 seconds after the pilot is lit, then release.

NOTE: If pilot goes out, repeat Steps 3, 4 and 5. Due to the safety interlock in the control, it is necessary to wait one (1) minute before relighting pilot.

6. Turn control knob counterclockwise to the desired heating level between the HI and LO positions. The main burner should light.

CAUTION: Do not try to regulate the heat by using the manual shut-off valve.

TURNING HEATER "OFF"

1. Turning control knob clockwise to the PILOT position allows the main burner to completely shut-off, however the pilot continues to burn.
2. Turning control knob clockwise to the OFF position shuts off both the main burner and pilot.

THERMOSTAT CONTROL OPERATION

The thermostatic control used on this heater differs from a conventional type thermostat. A conventional thermostat simply turns off and on the main burners. The thermostat used on this heater actually senses the room temperature and adjusts the amount of gas flow to the burner, therefore increasing or decreasing the burner flame height. If the temperature of the room exceeds the set temperature, the burner will shut off and recycle back ON when temperature drops below set point.

Control Knob Position	Standard Room Temperature *
LO	About 50° F
MED	About 70° F
HI	About 85° F

The control knob can be set to any heat level between the HI and LO positions.

* **NOTE:** Since the thermostat sensing bulb measures the temperature of air near the heater cabinet, this may not always coincide with room temperature (depending on housing construction, installation location, room size, open air temperatures, etc.). It is therefore advisable to use the table above as an estimate only. Frequent operation of your heater will enable you to determine your own comfort levels.

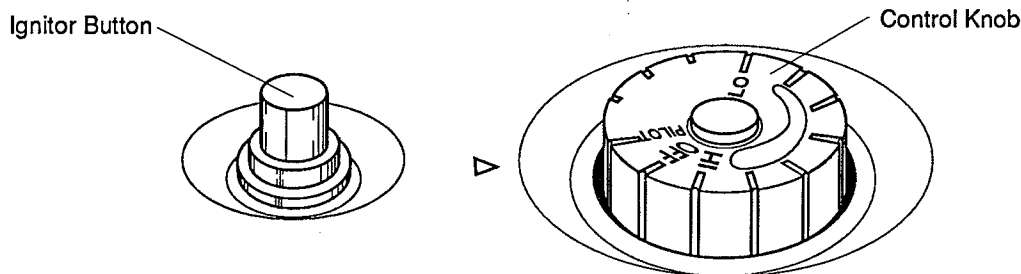


Figure 9 - Control Knob and Ignitor Button

BURNER INSPECTION

A periodic visual check of the pilot flame and burner pattern should be made.

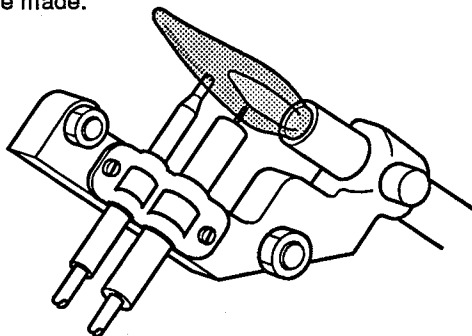


Figure 10 - Correct Pilot Flame Pattern

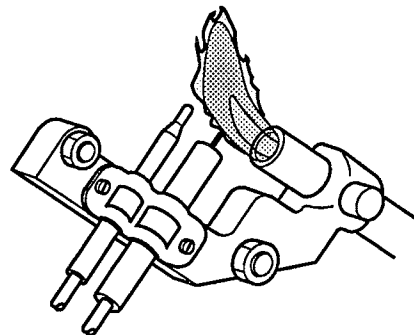


Figure 11 - Incorrect Pilot Flame Pattern

If pilot flame pattern is incorrect, as shown in Figure 11, turn heater off.
See "Pilot Malfunction" in Troubleshooting Section (page 11).

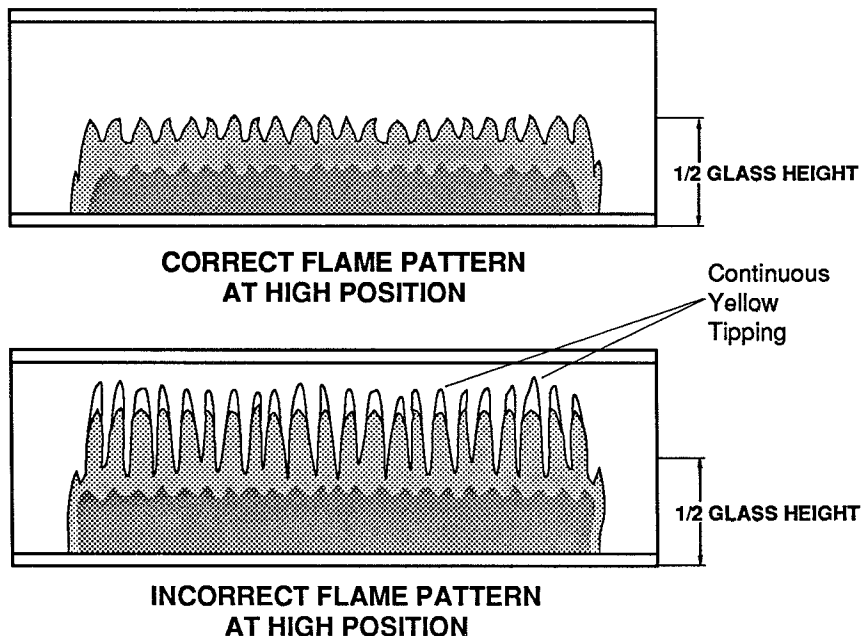


Figure 12 - Burner Flame Pattern

If maximum flame pattern exceeds that which is shown as *Correct Flame Pattern* in Figure 12, turn heater off.
See "Improper Burner Combustion" in Troubleshooting Section (page 11).

CLEANING AND MAINTENANCE

IMPORTANT: The room heater should be inspected before use and at least annually by a professional service person. It is important that control compartments, burners and circulating air passageways of the room heater be kept clean. More frequent cleaning may be required due to excessive lint from carpeting, bedding material, etc.

All cleaning should be done with the heater cold and the gas shut off. Keep the room heater clear of dust and debris,

especially in and around the ODS pilot. Use a vacuum cleaner or pressurized air to remove dust from in and around the ODS pilot and main burner.

Dusting or wiping with a soft cloth and mild soap is all that should be required to keep the cabinet clean.

TROUBLESHOOTING

⚠ WARNING

To avoid risk of burn and electrical shock, **NEVER** attempt to service heater while it is plugged in, operating or hot. Service and repairs should be done by a qualified service person.

IMPORTANT

Never use a wire, needle or similar object to clean the pilot. This can damage the pilot unit.

PROBLEM	REASON	SOLUTION
PILOT MALFUNCTION		
No Spark.	<ol style="list-style-type: none"> Ignitor electrode incorrectly positioned. Ignitor electrode broken. Ignitor electrode not connected to lead wire. 	<ol style="list-style-type: none"> Replace Ignitor. Replace Ignitor. Reconnect lead wire.
Spark No ignition.	<ol style="list-style-type: none"> Air in pipe when installed. Pilot (ODS) clogged. Gas regulator setting is not correct. Depleted gas supply. 	<ol style="list-style-type: none"> Repeat igniting operation until air is eliminated. Replace pilot assembly. Replace gas regulator. Check gas supply.
Ignites but pilot is not maintained.	<ol style="list-style-type: none"> Control knob depressed insufficiently. Control knob not depressed long enough. Control locked out. The pilot flame does not touch the thermocouple. Thermocouple connections may be loose at control. Thermocouple damaged. Control valve is damaged. Manual shutoff valve is partially closed. 	<ol style="list-style-type: none"> Completely depress control knob. After pilot is ignited, keep control knob depressed for 30 seconds. Wait 1 minute for control to reset. Repeat igniting operation. <ol style="list-style-type: none"> Replace pilot. Check manifold pressure. Tighten connections firmly. Replace thermocouple. Replace control valve. Open valve completely.
MAIN BURNER DOES NOT LIGHT		
Pilot flame ignition is not maintained.	<ol style="list-style-type: none"> Refer to "Pilot Malfunction". 	
Pilot ignited and maintained.	<ol style="list-style-type: none"> Main burner orifice is clogged. Main burner orifice is not correct. (Orifice diameter too small). Extremely low inlet gas pressure. 	<ol style="list-style-type: none"> Clean or replace main burner orifice. Replace the main burner orifice. Contact local LP gas company.
IMPROPER BURNER COMBUSTION		
Main burner turns off when control knob is not depressed.	<ol style="list-style-type: none"> Refer to "Pilot malfunction", "Spark". 	
Delayed ignition.	<ol style="list-style-type: none"> Manifold pressure is too low. Main burner orifice is clogged. 	<ol style="list-style-type: none"> Contact local LP gas company. Clean or replace main burner orifice.
Backfiring during combustion.	<ol style="list-style-type: none"> Main burner orifice restricted/damaged. Main burner damaged. Gas regulator malfunction. 	<ol style="list-style-type: none"> Clean or replace main burner orifice. Replace main burner. Replace gas regulator.
Yellow flame during combustion.	<ol style="list-style-type: none"> Insufficient air. Gas regulator malfunction. 	<ol style="list-style-type: none"> Check and clean burner. Replace gas regulator.
Slight smoke or odor during initial operation.	<ol style="list-style-type: none"> Residues from manufacturing processes. 	<ol style="list-style-type: none"> Problem will be eliminated after a few hours of operation.
Heater produces unwanted odors.	<ol style="list-style-type: none"> Odors can be caused by odors in room, such as paint, hair spray, glues, etc. Low fuel supply. Gas leak. 	<ol style="list-style-type: none"> Ventilate room and discontinue use of products while heater is operating. Refill supply tank. Check and correct all leaks.

Troubleshooting Continued On Next Page

TROUBLESHOOTING (Cont.)

PROBLEM	REASON	SOLUTION
Gas Heater Shuts Off In Use ODS operates.	1. Enough fresh air is not available.	1. Open window and/or door for ventilation.
Even if well ventilated, ODS operates.	2. ODS malfunction.	2. Replace ODS assembly.
⚠ CAUTION: For your safety, if you smell gas: A. Shut off gas supply and open window. C. Extinguish any open flame. B. DO NOT touch electrical switches, D. Immediately call your gas supplier. including heater controls.		
Gas Leakage		
Gas odor even when valve is closed.	1. Gas leak. 2. Gas valve unit malfunction.	1. Install piping correctly. Check for gas leaks. 2. Replace control valve unit.
Gas odor during combustion.	1. Foreign matter between control valve unit and burner. 2. Gas Leak.	1. Disassemble and remove foreign matter. After reassembly, check for leaks with a solution of liquid detergent and water. 2. Check and correct all leaks.

SERVICE HINTS

When gas pressure is too low:

- Pilot burner will not be maintained.
- Main burner has delayed ignition.
- The specified heating capacity will not be obtained (insufficient heating).
- Check LP fuel level.

When gas quality is bad:

- Pilot burner ignition will not be maintained.
- Flames and soot will be generated from main burner.
- Backfire will occur when ignited.

If you believe your gas pressure is too low or your gas quality is bad, contact your local LP gas dealer.

REPLACEMENT PARTS

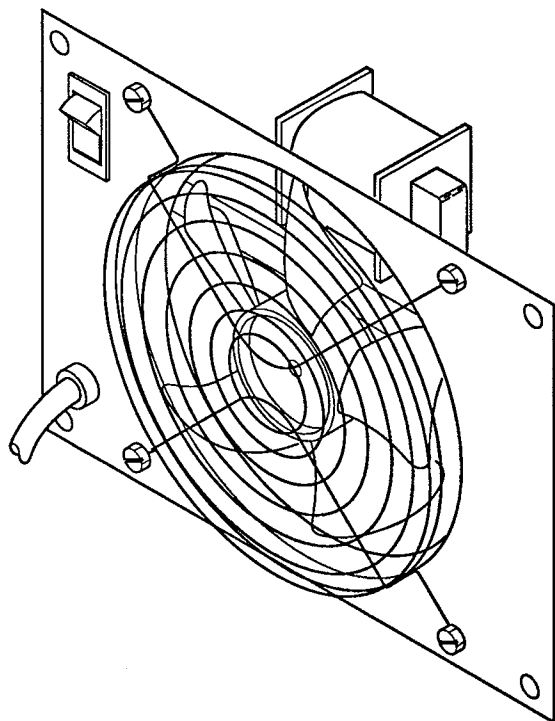
NOTE: In order for you to receive credit for parts replaced under warranty, only original replacement parts must be used.

A. PARTS UNDER WARRANTY - Contact authorized dealers of this product. If they are unable to supply original replacement part(s), call DESA International at 1-800-323-5190. Be prepared to indicate name, address, model number, how heater was malfunctioning, type of gas used and purchase date. In most cases, the defective part will be requested to be returned to the factory.

B. PARTS NOT UNDER WARRANTY - Contact authorized dealers of this product. If they are unable to supply original replacement part(s), call DESA International at 1-502-781-9600. Be prepared to indicate model number and replacement part number.

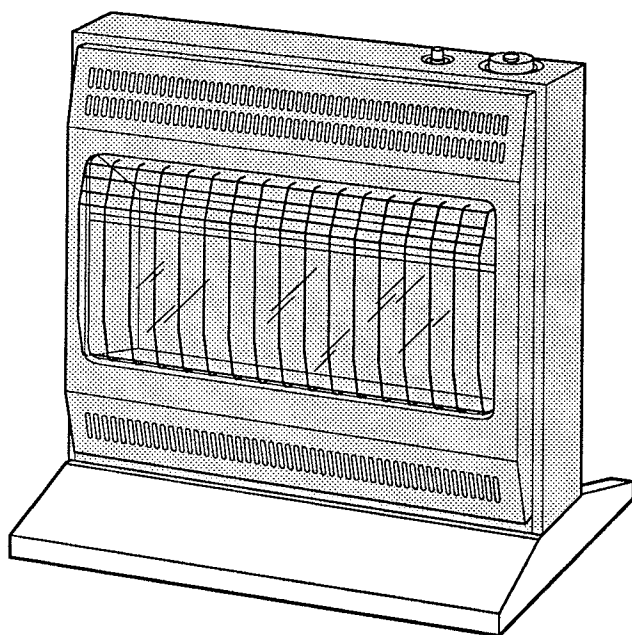
ACCESSORIES

These accessories for your heater are available at your local dealer.



FAN KIT - GA2100A

For all models. Makes heater more efficient by providing better heat distribution.

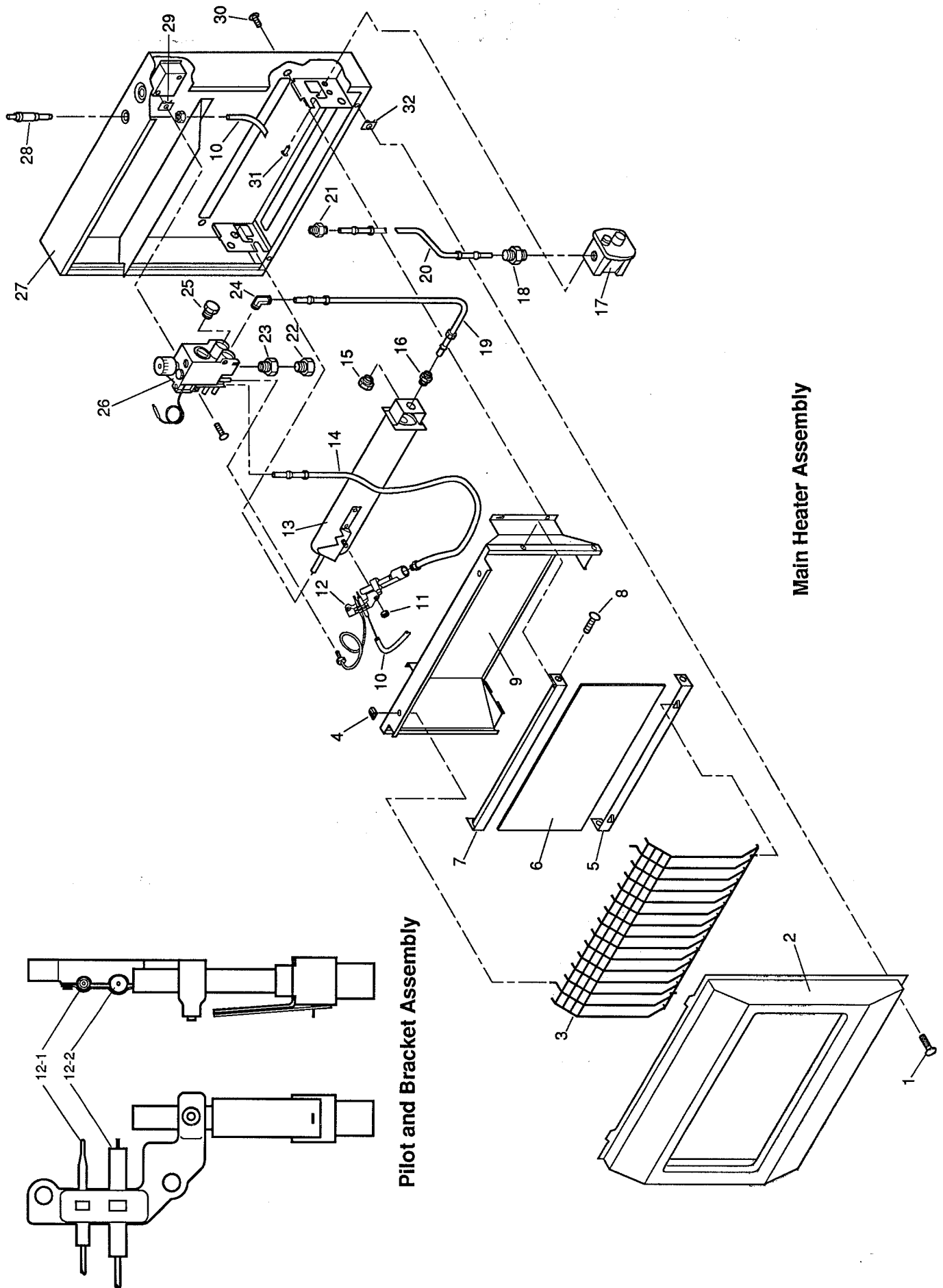


FLOOR MOUNTING STAND

Models TGP18T - GA4000

Model TGP28T - GA4010

For locating the heater on the floor, away from a wall.



Main Heater Assembly

Pilot and Bracket Assembly

ILLUSTRATED PARTS LIST

KEY NO.	PART NUMBER FOR		DESCRIPTION	QTY.
	TGP18T	TGP28T		
1	098304-01	098304-01	Screw, #10 x 3/8"	2
2	098742-07	098742-08	Front Panel	1
3	098197-01	098197-02	Grill Guard	1
4	098342-01	098342-01	Clip, Grill Guard	2
5	098533-01BR	098533-02BR	Bottom Glass Retainer	1
6	098260-01	098260-02	Glass Panel	1
7	098532-01BR	098532-02BR	Top Glass Retainer	1
8	M11084-37	M11084-37	Screw, #8 x 1/4"	4
9	098352-01BR	098352-02BR	Deflector Unit	1
10	098271-02	098271-02	Ignitor Cable	1
11	098249-01	098249-01	Nut, M5	2
12	098245-01	098245-01	Pilot and Bracket Assembly	1
12-1	098514-01	098514-01	Thermocouple	1
12-2	098515-01	098515-01	Ignitor Electrode	1
13	098242-01	098243-01	Burner	1
14	098517-01	098517-01	3/16" Pilot Tubing	1
15	098251-01	098251-03	Injector	1
16	098250-01	098250-01	Injector Holder	1
17	098924-03	098924-03	Pressure Regulator Kit	1
18	098274-01	098274-01	1/2" NPT Male Connector	1
19	098518-01	098518-01	3/8" Outlet (Burner) Tubing	1
20	098520-01	098520-01	3/8" Inlet Tubing	1
21	098264-01	098264-01	3/8" NPT Male Connector	1
22	098276-01	098276-01	1/8" NPT Plug	1
23	098277-01	098277-01	3/8" to 1/8" NPT Bushing	1
24	098265-01	098265-01	3/8" NPT Male Elbow	1
25	098275-01	098275-01	3/8" NPT Plug	1
26	098522-01	098522-02	Thermostat Gas Valve	1
27	098530-01	098531-01	Cabinet	1
28	097159-01	097159-01	Piezo Ignitor	1
29	098319-01	098319-01	Fastener, "U" Nut	2
30	M11084-38	M11084-38	Screw, #8 x 3/8"	2
31	M11084-38	M11084-38	Screw, #8 x 3/8"	2
32	M11271-8	M11271-8	Fastener, "U" Nut	2

WARRANTY INFORMATION

KEEP THIS WARRANTY

Model _____

Serial No. _____

Date Purchased _____

ALWAYS SPECIFY MODEL AND SERIAL NUMBERS WHEN COMMUNICATING WITH THE FACTORY.

WE RESERVE THE RIGHT TO AMEND THESE SPECIFICATIONS AT ANY TIME WITHOUT NOTICE. THE ONLY WARRANTY APPLICABLE IS OUR STANDARD WRITTEN WARRANTY. WE MAKE NO OTHER WARRANTY, EXPRESSED OR IMPLIED.

LIMITED WARRANTY TOUCH'N GLOW GAS HEATERS

DESA International warrants this product to be free from defects in materials and components for one (1) year from the date of first purchase, provided that the product has been properly installed, operated and maintained in accordance with all applicable instructions. To make a claim under this warranty the Bill of Sale or cancelled check must be presented.

This warranty is extended only to the original retail purchaser. This warranty covers only the cost of part(s) required to restore this heater to proper operating condition. Warranty part(s) MUST be obtained through authorized dealers of this product and/or DESA International who will provide original factory replacement parts. Failure to use original factory replacement parts voids this warranty. The heater MUST be installed by a qualified installer in accordance with all local codes and instructions furnished with the unit.

This warranty does not apply to parts that are not in original condition because of normal wear and tear, or parts that fail or become damaged as a result of misuse, accidents, lack of proper maintenance or defects caused by improper installation. Travel, diagnostic cost, labor, transportation and any and all such other costs related to repairing a defective heater will be the responsibility of the owner.

TO THE FULL EXTENT ALLOWED BY THE LAW OF THE JURISDICTION THAT GOVERNS THE SALE OF THE PRODUCT; THIS EXPRESS WARRANTY EXCLUDES ANY AND ALL OTHER EXPRESSED WARRANTIES AND LIMITS THE DURATION OF ANY AND ALL IMPLIED WARRANTIES, INCLUDING WARRANTIES OF MERCHANTABILITY AND FITNESS FOR A PARTICULAR PURPOSE TO ONE (1) YEAR FROM THE DATE OF FIRST PURCHASE; AND DESA INTERNATIONAL'S LIABILITY IS HEREBY LIMITED TO THE PURCHASE PRICE OF THE PRODUCT AND DESA INTERNATIONAL SHALL NOT BE LIABLE FOR ANY OTHER DAMAGES WHATSOEVER INCLUDING INDIRECT, INCIDENTAL OR CONSEQUENTIAL DAMAGES.

Some states do not allow a limitation on how long an implied warranty lasts or an exclusion or limitation of incidental or consequential damages, so the above limitation on implied warranties, or exclusion or limitation on damages may not apply to you.

This warranty gives you specific legal rights, and you may also have other rights that vary from state to state.

For information about this warranty write:

DESA[®]

INTERNATIONAL

P.O. Box 90004

2701 Industrial Drive

Bowling Green, KY 42102-9004

098991-01
REV. B
8/89