



OWNER'S MANUAL with PARTS LIST

MODELS B100AK & B150BAK

IMPORTANT: READ AND UNDERSTAND THIS MANUAL BEFORE
STARTING OR SERVICING. KEEP THIS MANUAL FOR
FUTURE REFERENCE.

WARNING

Improper use of this heater can result in serious bodily injury due to hazards of fire or explosion, carbon monoxide poisoning, burn, and electrical shock.

- Use only kerosene or No. 1 fuel oil. NEVER use Gasoline, Naphtha, Paint Thinners, Alcohol or other highly flammable fuels!
- Use only in areas free of flammable vapor or high dust content. NEVER use heater where Gasoline, Paint Thinner or other highly flammable vapors are present.
- Heater must be level while hot or operating, or a fire may occur.
- Make sure hot air outlet is at least eight (8) feet from combustible materials.
- NEVER use heater in living or sleeping areas.
- Use only in well ventilated areas. Provide ventilation of at least three (3) square feet for each 100,000 of BTU rating.
- When used with a thermostat, heater may start at anytime!
- Keep children away from heater at all times. NEVER leave a heater plugged in without adult supervision if children or animals are likely to be present.
- Use only with the electrical voltage and frequency specified on model plate.
- Use only a properly grounded three-wire extension cord.
- DO NOT move, handle, refuel or service a hot or operating heater.
- Use heater only in accordance with local ordinances and codes.
- NEVER attach duct work to front of heater.
- Store heater in a level position when filled or fuel leakage may occur.



079232-01
REV. E

ASSEMBLY

Some models are equipped with wheels and a handle, and are shipped with these items removed from the unit and can be found in the shipping carton along with the mounting hardware.

TOOLS REQUIRED

Medium Phillips Screwdriver, 3/8" Open or Adjustable Wrench, Hammer.

1. Slide the axle through the wheel support frame. Install the wheels on the axle. **IMPORTANT:** The extended hub of the wheel should be positioned toward the wheel support frame. Position the cap

nuts on the axle ends and gently tap with a hammer to secure.

2. Position the heater on the wheel support frame assembly with the motor end over the wheels.
3. Use four screws and nuts to attach the handle to the top of the tank flange. The screws will go through the handle, the tank flange and the wheel support frame. Install the nuts finger tight only until all four have been installed, then tighten all nuts.
4. Using four screws and nuts install the rear handle as outlined in step 3.
5. Tighten all nuts.

VENTILATION

⚠ WARNING: USE ONLY IN WELL VENTILATED AREAS TO AVOID RISK OF CARBON MONOXIDE POSIONING.

FRESH AIR OPENING REQUIREMENTS

HEATER SIZE	SQUARE FOOT OPENING
100,000	3.0
150,000	4.5

Note: If more than one heater is being used provide additional fresh air.

EXAMPLE: A 100,000 BTU heater will require a two-car garage door, raised four (4) inches or a single garage door raised eight (8) inches. A window can also be used for ventilation. The 100,000 BTU heater requires at least two (2) thirty inch windows raised seven inches.

FUELS

⚠ WARNING: Use only kerosene or #1 fuel oil to avoid risk of fire or explosion.

NEVER use gasoline, naptha, paint thinners, alcohol or other highly flammable fuels.

- Use of #2 fuel oil or #2 diesel oil may result in
- a. More frequent clogging of fuel filter and nozzle.
 - b. The formation of carbon on the spark plug.

Do not allow your spark plug to get carbon buildup on the electrodes.

Carbon deposits on the spark plug can cause interrupted starting and raw fuel emission from the heater.

SPECIFICATIONS

Output rating (BTU Per Hour)
Fuel
Fuel Tank Capacity (U.S. Gallons)
Fuel Consumption (Approx. U.S. Gal. Per Hr.)
Electric Requirements
Amperage
Motor RPM
Hot Air Output (Approx. CFM)
Air Pump Pressure (PSI)
Shipping Weight (Approx. Lbs.)
Heater Weight Without Fuel (Approx. Lbs.)

B100AK	B150BAK
100,000	150,000
Use Only Kerosene or #1 Fuel Oil	
9	13.5
0.74	1.10
120 V/60 HZ (Same All Models)	
5.5	5.0
3450	3450
400	540
4.0	5.0
64	94
55	77

OPERATION

⚠ WARNING: Use only a properly grounded three-wire extension cord. A cord with proper capacity rating is needed to assure 120 volt operation.

- Distances up to 50 feet use 18 AWG.
- Distances up to 100 feet use 16 AWG.
- Distances up to 200 feet use 14 AWG.

1. Fill fuel tank with correct fuel.
2. The heater has a short power cord; use an extension cord of at least six (6) feet long
3. Make sure the front, hot air outlet, is at least eight (8) feet away from any combustible materials.
4. Check reset button to be sure it is pushed in.
5. Heater will start when plugged in. Outlet must be grounded.

MAINTENANCE AND STORAGE

⚠ WARNING: ALWAYS UNPLUG HEATER BEFORE SERVICING TO AVOID RISK OF ELECTRICAL SHOCK OR ELECTROCUTION.

A complete service manual is available from your authorized service center

⚠ CAUTION

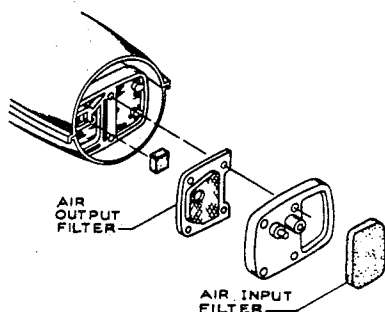
When removing the motor from the heater, always remove the fan first. The weight of the motor resting on the fan could damage the fan pitch. When replacing the fan on the motor shaft, place the fan hub flush with the motor shaft.

FAN BLADES

Clean after every 300 hours of operation or as necessary. Use a soft cloth moistened with kerosene or solvent, then dry thoroughly.

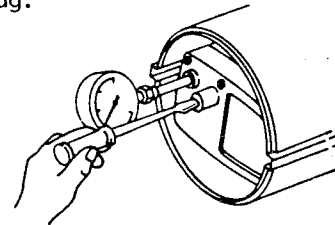
AIR FILTERS

Check frequently for dust film. To clean, remove the filters from housing, wash with mild detergent and dry thoroughly before replacing. Replace once each season. IMPORTANT: DO NOT oil the filter elements.



ADJUSTMENT OF PUMP PRESSURE

1. Remove the plug from the air filter housing and install the pressure gauge (HA1180).
2. To adjust the pump pressure, turn the pressure relief valve in to raise, out to lower.
3. After adjustment, remove the gauge and replace the plug.



SPARK PLUG

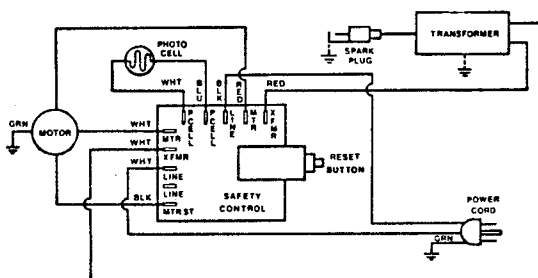
After every 300 hours of operation, clean and adjust spark plug as required. Spark plug gap: .050 inches.

STORAGE

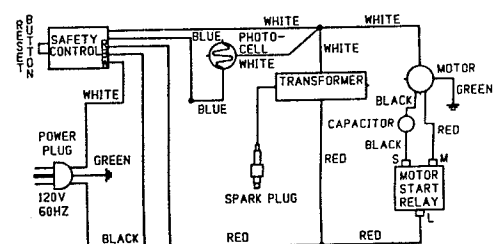
Store heater in a dry location, free of corrosive fumes and dust.

Flush tank with clean fuel before storing. Drain all fuel from tank.

WIRING DIAGRAM




B100AK



B150BAK


TROUBLESHOOTING

SYMPTOM	POSSIBLE CAUSE	CORRECTIVE ACTION
<p>Motor does not start; thermostat (if used) is set to call for heat.</p>	<p style="text-align: center;">Electrical Troubles</p> <p style="text-align: center;"> CAUTION: Disconnect Power Cord before servicing!</p> <ol style="list-style-type: none"> No power or low voltage at heater <ol style="list-style-type: none"> Be sure power is reaching heater; check condition of heater cord. Repair or replace. Use extension cord with wires heavy enough to carry the electrical load of the heater. Be sure voltage at the outlet is same as shown on heater instruction plate. Damaged relay (150 only) Damaged motor. Damaged safety control Thermostat damaged (if used). <ol style="list-style-type: none"> Replace relay. Check motor. Replace damaged motor. Replace safety control. Replace. Not a serviceable part. 	
	<p style="text-align: center;">Mechanical Troubles</p> <ol style="list-style-type: none"> Fan obstructed by mechanical damage or dirt. <ol style="list-style-type: none"> Check for bent outer shell. Check for damaged fan; replace if damaged. Check for damaged motor mount; replace if damaged. Check for tight pump; replace if damaged. 	
<p>Heater will not ignite, but motor runs for a short time.</p>	<p style="text-align: center;">Fuel System Troubles</p> <ol style="list-style-type: none"> Fuel tank empty, water in fuel, wrong fuel. <ol style="list-style-type: none"> Add fuel to tank. Check for water in tank; clean tank and fuel filter if water is found (water in the tank will form globules in the bottom which you can see). Add fresh, clean fuel to tank. Fuel filter clogged. Nozzle plugged or damaged. <ol style="list-style-type: none"> Clean by blowing compressed air through nozzle from outlet end of nozzle. Replace nozzle if cleaning does not solve the problem. Extremely low temperature may cause fuel to thicken and not flow. Dirty air filters. Air leak at fuel filter. <ol style="list-style-type: none"> Remove and wash in clean fuel. Blow dry and replace. Use a non toxic anti-icer such as "Heet", "Methanol Alcohol", or "Frostex." Be sure air filters are clean. Check fuel filter for air leaks and for tightness of fit where it is connected to fuel line. 	

TROUBLESHOOTING

SYMPTOM	POSSIBLE CAUSE	CORRECTIVE ACTION
<p>(Continued)</p> <p>Heater will not ignite, but motor runs for a short time.</p>	<p style="text-align: center;">Ignition Troubles</p> <p style="text-align: center;">⚠ CAUTION: High Voltage, Disconnect power cord first!</p>	
	<ol style="list-style-type: none"> Spark plug wire disconnected from plug. Damaged spark plug (wrong gap, plug wet with fuel or electrodes carboned, or plug damaged). Damaged transformer. 	<ol style="list-style-type: none"> Check to be sure wire is tight. <ol style="list-style-type: none"> Gap between electrodes should be .050 or about thickness of a dime. Adjust electrode gap. Inspect plug for worn or eroded electrodes. Replace a damaged spark plug. Connect heater cord. Disconnect spark plug wire and check transformer for spark; replace if no spark can be obtained.
<p>Heater burns, but puffs of smoke can be seen; heater will not burn steady; heater burns with odor; heater smokes continuously.</p>	<p style="text-align: center;">Improper Fuel-Air Mixture (Not Enough Fuel)</p>	
	<ol style="list-style-type: none"> Heater running out of fuel; water condensation in fuel tank; wrong fuel. Dirty air filters causing reduced air flow through nozzle, resulting in low fuel flow. Fuel filter loose, dirty or connection loose. Dirty nozzle. Fan blade. Loose air output line connections between filter housing and burner. Rubber sleeve on shank of nozzle is leaking (remote possibility). 	<ol style="list-style-type: none"> <ol style="list-style-type: none"> Shut heater off; check fuel tank. If you can see globules of water in the bottom, drain and flush the tank and filter with clean fuel. Add fresh, clean fuel to tank. Remove and clean the air filters. Be sure air intake is not blocked. <ol style="list-style-type: none"> Remove and wash fuel filter in clean fuel. Check condition of connection between fuel line and burner. Replace with new fuel line. <ol style="list-style-type: none"> Remove and clean the burner head. Blow compressed air through nozzle from outlet end. Never use a drill, wire, or other tool to open a nozzle passage. Check for excessive dirt accumulation on fan blade which could be causing motor to slow down. Be sure connections are tight. If heater puffs intermittently, replace the rubber sleeve (handle parts carefully to prevent damage, assemble them carefully to preserve airtightness).

TROUBLESHOOTING

SYMPTOM	POSSIBLE CAUSE	CORRECTIVE ACTION
Flames come out front of heater.	<p>Improper Fuel-Air Mixture (Too much fuel, or not enough air for amount of fuel being supplied)</p> <ol style="list-style-type: none"> 1. Dirty fan, or air passageway through heater blocked by dirt or trash. 2. Fan loose or improperly located on shaft. 3. Bent or damaged fan. 4. High pump pressure. 	<ol style="list-style-type: none"> 1. Clean the fan. Be sure the air passageway through the heater is clean. Keep the heater clean. 2. Check fan; tighten or reposition. 3. Replace. Do not attempt repair of fan. 4. Check pressure.
Heater cycles intermittently.	<p> CAUTION: Disconnect Power Cord before servicing!</p> <ol style="list-style-type: none"> 1. Damaged electrical supply or damaged connections. 	<ol style="list-style-type: none"> 1a. Be sure extension cord and heater service cord are in good condition, without intermittent open circuits. b. Check mechanical and electrical soundness of all wiring connections in the heater and service cord.
Heater ignites, but button of safety control pops out anyway.	<ol style="list-style-type: none"> 1. Dirty photocell. 2. Damaged photocell. 3. Damaged safety control. 4. Damaged electrical connections through photocell and safety control. 	<ol style="list-style-type: none"> 1. Check to see if glass face of cell is so dirty it cannot "see" the flame; clean glass if dirty. 2. Replace photocell. 3. Replace safety control. 4. Be sure all solder joints and wiring connections are secure. Check wiring diagram.
Safety control fails to trip when a no-flame condition exists.	<ol style="list-style-type: none"> 1. Damaged safety control. 2. Safety control dirty or damaged. 3. Photocell electrical leads shorted. 	<ol style="list-style-type: none"> 1. Replace safety control. 2. Replace safety control. 3. Check photocell leads for shorted leads. Replace photocell if damaged.
Button on safety control will not stay in when pressed.	<ol style="list-style-type: none"> 1. Resetting is tried too soon after the breaker trips. 2. Damaged safety control. 	<ol style="list-style-type: none"> 1. Wait five (5) minutes and try again. 2. Replace safety control.

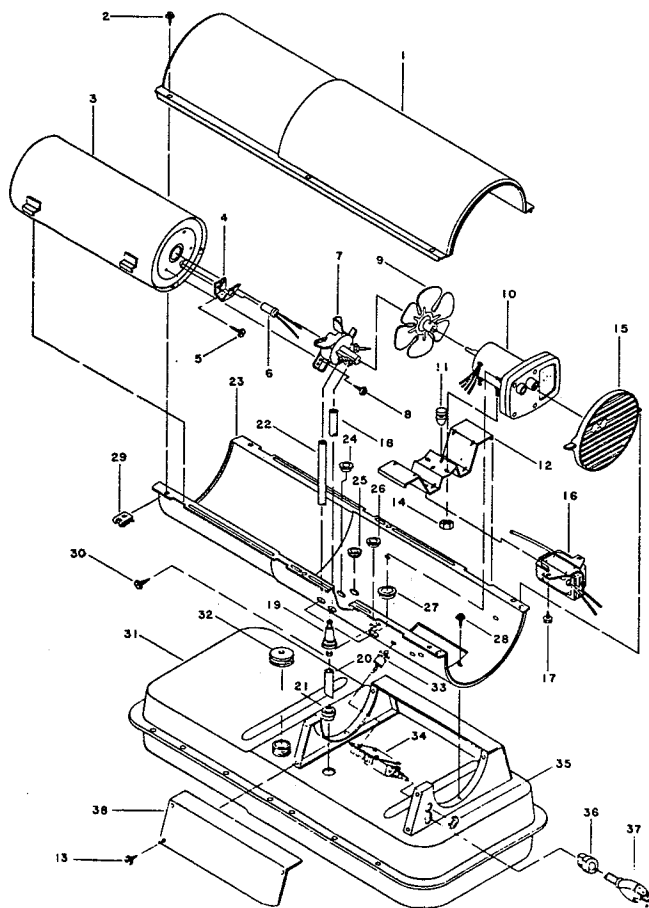
PARTS - MODEL B100AK

Be sure to have all pertinent facts before you call or visit your service dealer.

The model and serial numbers of your portable heater will be found on a decal toward the rear (motor end) of your unit.

When ordering repair parts always give the following:

A) Part Number B) Model Number C) Description



HEATER EXPLODED VIEW

KEY No.	PART NUMBER	PART DESCRIPTION	QTY.
1	M51072-01AB	Upper Shell	1
2	M15823-27	Screw (10-16 x 1/2)	6
3	M51075-01	Combustion Chamber Assembly	1
4	M16660	Bracket, Photocell	1
5	M10908-2	Screw (6-32 x 3/8)	2
6	M16656-10	Photocell Assembly	1
7		Burner Head Assembly (See Page 7 For Details)	1
8	M11084-27	Screw (10-16 x 1/2)	3
9	M51153-01	Fan	1
10	M23149-14	Motor and Pump Assembly (See Page 7 For Details)	1
11	M50631	Rubber Bumper	2
12	M51074-01	Motor Mounting Bracket	1
13	M11084-3	Screw (12-14 x 1/2)	4
14	NTC-4C	Hex Jam Nut	2
15	M51114-01	Fan Guard	1
16	M50570-04	Transformer	1
17	M11084-27	Screw (10-16 x 1/2)	2
18	M51345-01	Fuel Line	1
19	M51150-01	Fuel Filter	1
20	M51151-01	Fuel Line Tube	1
21	M10990-3	Rubber Bushing	1
22	M50814-06	Airline	1
23	M51073-01AB	Lower Shell	1
24	M30865-02	Bushing	1
25	M30865-02	Bushing	1
26	M30865-02	Bushing	1
27	M50104-02	Bushing	1
28	M11084-3	Screw (12-14 x 1/2)	6
29	M11271-8	Clip Nut	6
30	M15823-37	Screw (Grounding, 8-18 x 1/4)	1
31	M51115-02AA	Fuel Tank	1
32	M51027-06	Cap, Fuel (Includes gasket)	1
33	M51122-01	Circuit Board Support	3
34	M50671-02	Control, Safety	1
35	M51157-01	Nut Hex 12mm	1
36	M11143-1	Bushing, Strain Relief	1
37	079218-01	Cord, Power	1
38	M51077-01AA	Cover, Side	1

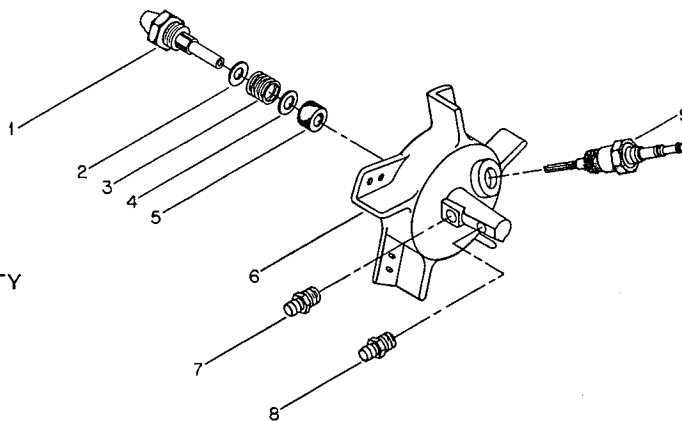
PARTS AVAILABLE - NOT SHOWN

M51295-01	Decal, Tradename
M51138-07	Decal, Wiring
079219-02	Decal, General Information

PARTS - MODEL B100AK

BURNER HEAD ASSEMBLY

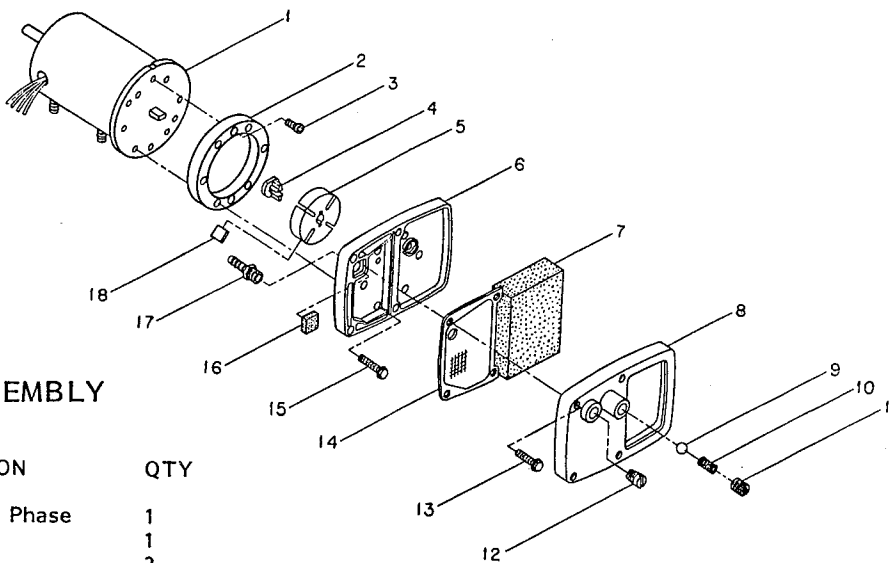
KEY NO.	PART NUMBER	PART DESCRIPTION	QTY
1	M51120-01	Nozzle	1
2	M10659-1	Washer, Nozzle Seal	1
3	M10809-1	Spring, Nozzle Seal	1
4	M10659-1	Washer, Nozzle Seal	1
5	M8882	Seal, Nozzle, Sleeve	1
6	M50924-03	Body, Burner Head	1
7	M50820-02	Fitting, Barb	1
8	M50820-02	Fitting, Barb	1
9	M10962-2	Spark Plug	1



**BURNER HEAD ASSEMBLY
EXPLODED VIEW**

MOTOR AND PUMP ASSEMBLY

KEY NO.	PART NUMBER	PART DESCRIPTION	QTY
1	M51131-01	Motor-Split Single Phase	1
2	M8645	Pump Body	1
3	FHPF3-4C	Screw 10-32 x ½	2
4	M22009	Insert	1
5	M22456-1	Rotor, Pump	1
6	M50545	Cover, End Pump	1
7	M12179	Filter, Intake	1
8	M16545	Cover, End, Filter	1
9	M8940	Ball, Steel ¼ Dia.	1
10	M10993-1	Spring-Pressure Relief	1
11	M27694	Screw, Adjusting	1
12	M22997	Plug, Pipe	1
13	M12461-31	Screw, Hex Hd., 10-32 x 1	4
		Attaches Filter End Cover to Pump End Cover.	
14	M12244-1	Filter Assembly, Output	1
15	M12461-31	Screw, Hex Hd., 10-32x1	6
16	M11637	Filter, Lint	1
17	M50820-02	Fitting, Barb	1
18	M8643	Blade	4



**MOTOR AND PUMP ASSEMBLY
EXPLODED VIEW**

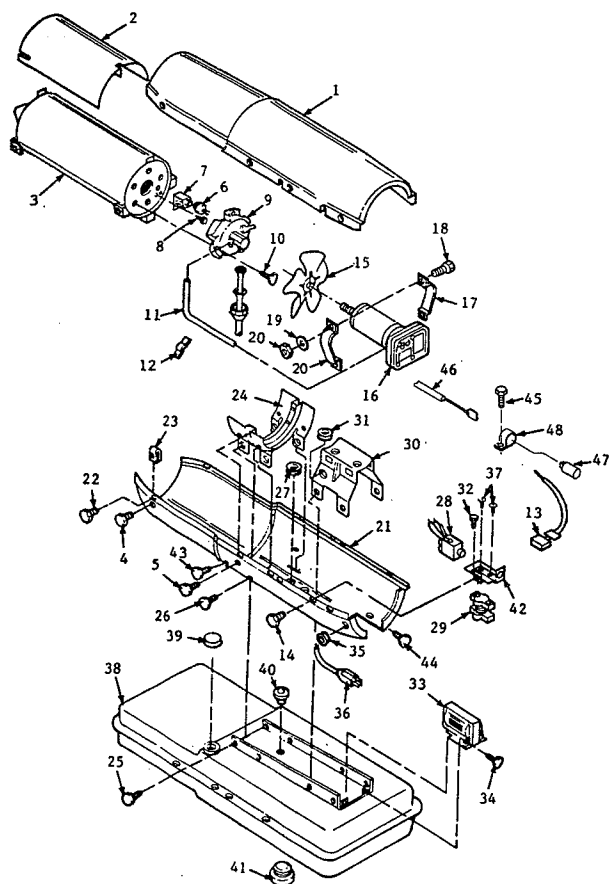
PARTS - MODEL B150BAK

Be sure to have all pertinent facts before you call or visit your service dealer.

The model and serial numbers of your portable heater will be found on a decal toward the rear (motor end) of your unit.

When ordering repair parts always give the following:

A) Part Number B) Model Number C) Description



HEATER EXPLODED VIEW

KEY NO.	PART NUMBER	PART DESCRIPTION	QTY
1	M17014AB	Shell, Upper	1
2	M16679	Deflector, Heat	1
3	M16887-6	Chamber, Combustion, Assembly	1
4	M11084-27	Screw, Hex Hd., 10-16 x 1/2	2
5	M11084-29	Screw, 10-16x 3/4	2
6	M16656-4	Photocell Assembly	1
7	M16660	Bracket, Photocell	1
8	M10908-2	Screw, Hex Hd., 6-32 x 3/8	2
9		Burner Head Assembly (See Page 9 for Details)	1
10	M11084-27	Screw, Hex Hd., 10-16 x 1/2 Attaches Burner Head	3
11	M50814-03	Airline, Tubing	1
12	M50873-01	Clip, Airline	2
13	M16841-16	Wire Assembly (red)	2
14	M11084-27	Screw, #10-16 x 1/2	1
15	M17058	Fan	1
16	078892-07	Motor & Pump Assembly (See Page 9 for Details)	1
17	M16661	Clamp, Motor	4
18	M51043-01	Screw, Motor Clamp, 1/4-20 x 1 1/2	2
19	WLM-4C	Lockwasher 1/4 in.	2
20	NPC-4C	Nut, Hex 1/4-20	2
21	M16810A	Shell, Lower	1
22	M11084-27	Screw, Hex Hd., 10-16 x 1/2	6
23	M11271-6	Nut, Clip	6
24	M12828	Bracket, Shell Support	1
25	M11084-27	Screw, Hex Hd., 10-16 x 1/2	8
26	M11084-29	Screw, #1-16 x 3/4	2
27	1000576	Grommet Leads Thru Lower Shell	2
28	M50671-01	Control, Safety	1
29	M12462-17	Relay, Motor Start	1
30	M16645	Bracket, Motor Support	1
31	1000577	Grommet	2
32	M11084-27	Screw, #10-16 x 1/2 (Grounding)	1
33	M16697-02	Transformer, 5000 Volt	1
34	M11084-27	Screw #10-16 x 1/2	2
35	M11143-1	Bushing, Strain Relief	1
36	079218-03	Cord, Power	1
37	RC2-2C	Screw, Rd. Hd., 8-32 x 1/4	2
38	M51090-14	Tank, Fuel	1
39	M51027-06	Cap, Fuel	1
40	M10990-3	Bushing, Rubber, Fuel Line Into Fuel Tank	1
41	M27417	Plug, Drain, Includes "O" Ring	1
42	M25296-1	Bracket, Relay	1
43	M11084-27	Screw, #10-16 x 1/2	2
44	M11084-27	Screw, #10-16 x 1/2	2
45	M11084-27	Screw, #10-16 x 1/2	1
46	M9900-77	Wire Assembly, Black	1
47	M12650-9	Capacitor	1
48	M12651-1	Clamp, capacitor	1

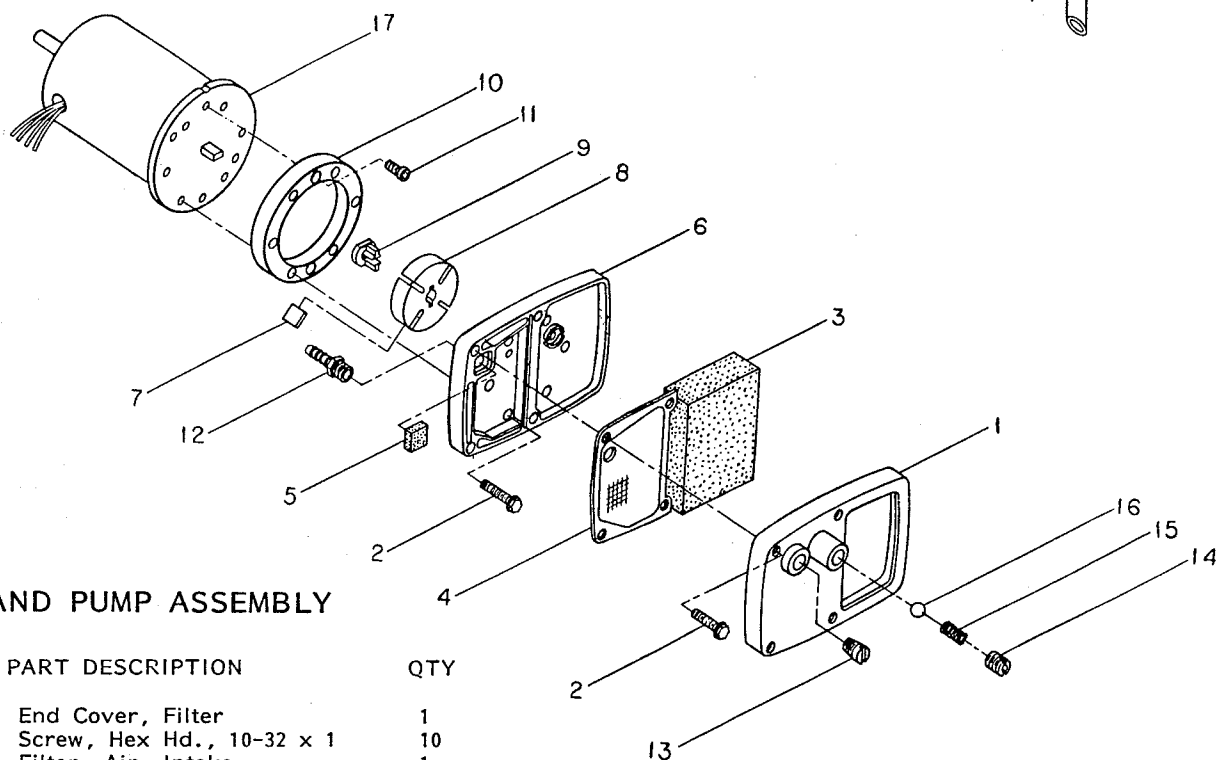
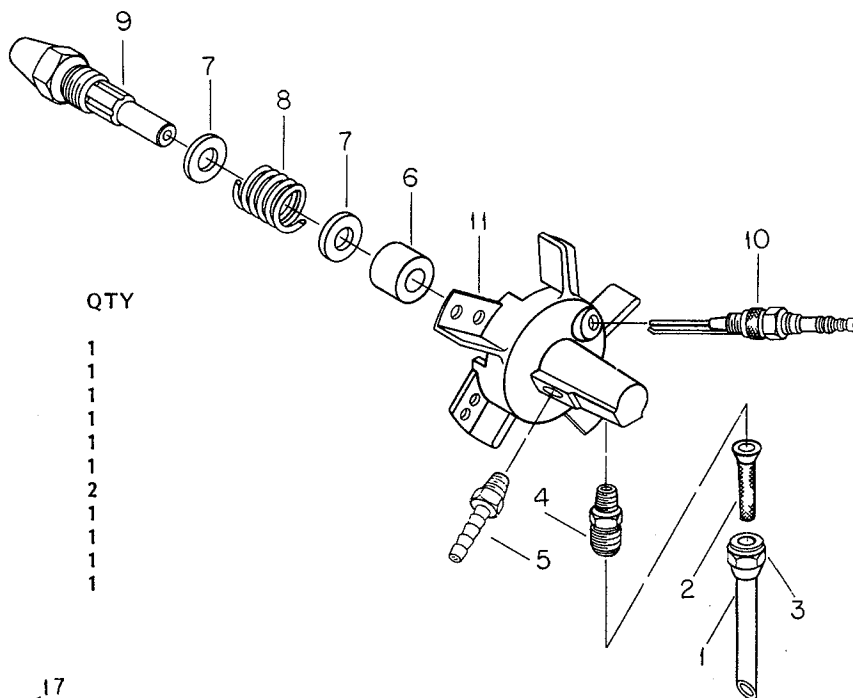
PARTS AVAILABLE -- NOT SHOWN

M50530	Decal, Wiring Diagram	
079708-01	Decal, General Information	
M51295-03	Decal, Tradename	
M13942-7	Connector, Wire (Blue Wires)	1
M13942-5	Connector, Wire (Red Wires)	1
M13942-6	Connector, Wire (White Wires)	1

PARTS - MODEL B150BAK

BURNER HEAD ASSEMBLY

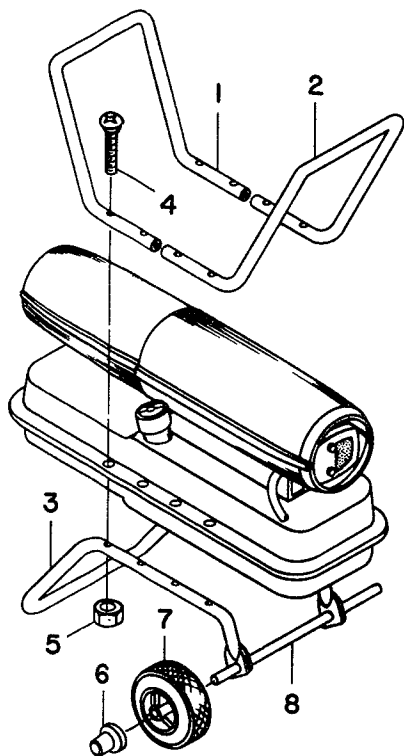
KEY NO.	PART NUMBER	PART DESCRIPTION	QTY
1	M16790-12	Tube, Filter, (Fuel Line)	1
2	M19630	Filter, Fuel	1
3	M50660-05	Nut, Flared	1
4	079685-01	Connector, Male	1
5	M50817-01	Fitting Barb	1
6	M8882	Sleeve, Nozzle Seal	1
7	M10659-1	Washer, Nozzle	2
8	M10809-1	Spring, Nozzle Seal	1
9	M18022	Nozzle, 1.1 GPH	1
10	M10962-2	Spark Plug	1
11	M50924-01	Body, Burner Head	1



MOTOR AND PUMP ASSEMBLY

KEY NO.	PART NUMBER	PART DESCRIPTION	QTY
1	M16545	End Cover, Filter	1
2	M12461-31	Screw, Hex Hd., 10-32 x 1	10
3	M12179	Filter, Air, Intake	1
4	M12244-1	Filter Assembly, Output	1
5	M11637	Filter, Lint	1
6	M50545	Cover, End Pump	1
7	M8643	Blade, Pump	4
8	M22456-1	Rotor, Pump	1
9	M22009	Insert, Hold Rotor To Motor Shaft	1
10	M8645	Body, Pump	1
11	FHPF3-4C	Screw, 10-32 x 1/2	2
12	M50817-01	Fitting, Barb	1
13	M22997	Plug, Pipe	1
14	M27694	Screw, Pressure Adjustment	1
15	M10993-1	Spring, Compression Pressure	1
16	M8940	Ball 1/4 in. Dia.	1
17	M51159-01	Motor, w/relay	1

PARTS



WHEEL AND HANDLE GROUP
MODEL B100AK

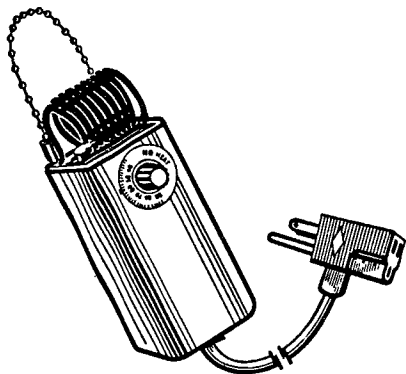
KEY NO.	PART NUMBER	PART DESCRIPTION	QTY
1	M15131-5	Handle, Front	1
2	M51334-02	Handle, Rear	1
3	M12342-3	Wheel Support Frame	1
4	M12345-33	Screw, Handles and Wheel Support Frame to Fuel Tank	8
5	NTC-3C	Nut, Hex 10-24, Torque Lock	8
6	M28526	Nut, Cap	2
7	079023-01	Wheel	2
8	M51015-01	Axle	1

WHEEL AND HANDLE GROUP
MODEL B150BAK

KEY NO.	PART NUMBER	PART DESCRIPTION	QTY
1	M51334-03	Handle, Front	1
2	M51334-01	Handle, Rear	1
3	M12831-3	Frame Wheel Support	1
4	M12345-33	Screw, Oval Hd., 10-24 x 1 3/4	8
5	NTC-3C	Nut, Torque, Lock No. 10-24	8
6	M28526	Nut, Cap	2
7	079023-01	Wheel	2
8	M16801-2	Axle	1

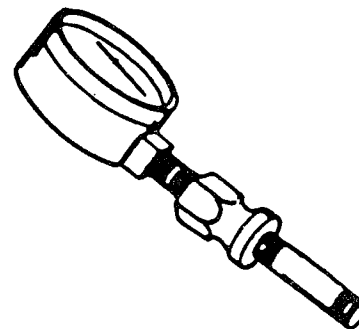
ACCESSORIES

Available from your Service Dealer.



THERMOSTAT KIT - HA1200

Keeps your building at the temperature you select day and night.



AIR GAUGE KIT - HA1180

Special tool to check air pressure.

WARRANTY AND REPAIR SERVICE

LIMITED WARRANTY

DESA International warrants this product and any parts thereof, to be free from defects in materials and workmanship for six (6) months from the date of first purchase when operated and maintained in accordance with instructions. This warranty is extended only to the original retail purchaser, when proof of purchase is provided.

This warranty covers only the cost of parts and labor required to restore the product to proper operating condition. Transportation and incidental costs associated with warranty repairs are not reimbursable under this warranty.

Warranty service is available only through authorized dealers and service centers.

This warranty does not cover commercial or rental usage; defects resulting from misuse, abuse, negligence, accidents, lack of proper maintenance, normal wear, alteration, modification, tampering, contaminated fuels, repair using improper parts, or repair by anyone other than an authorized dealer or service center. Routine maintenance is the responsibility of the owner.

THIS EXPRESS WARRANTY IS GIVEN IN LIEU OF ANY OTHER WARRANTY EITHER EXPRESSED OR IMPLIED, INCLUDING WARRANTIES OR MERCHANTABILITY AND FITNESS FOR A PARTICULAR PURPOSE.

DESA International assumes no responsibility for indirect, incidental or consequential damages. Some states do not allow the exclusion or limitation of incidental or consequential damages or limitations on how long an implied warranty lasts, so these limitations or exclusions may not apply to you. This Limited Warranty gives you specific legal rights and you may also have other rights which vary from state to state.

WARRANTY AND REPAIR SERVICE

Should your heater require service, return it with proof of purchase to your nearest Authorized Service Center. If inspection shows that the repairs required were caused by defective materials or workmanship, we will repair or replace it without charge. Repairs not covered by the warranty will be charged for at regular repair list prices. When writing for information regarding your heater, be sure to include the Model Number and Serial Number as shown on the identification plate. A service manual is available by sending a check for \$3.25 payable to DESA International, P.O. Box 719, Bowling Green, KY 42102-0719, ATTN: Customer Service Department. Each Service Center is independently owned and operated.

We reserve the right to amend these specifications at any time without notice.

KEEP THIS WARRANTY

Model No. _____

Serial No. _____

Date of Purchase _____

(To be filled in by purchaser)

DESA
INTERNATIONAL

Corporate Headquarters
P.O. Box 719
2701 Industrial Drive
Bowling Green, KY 42101

For information, write: DESA International, P.O. Box 719,
Bowling Green Kentucky 42101-0719 ATTN: Customer Service Department
When writing, always include Model Number and Serial Number.