

# ***Handy Master®***



**MODEL HM28**

## **OWNER'S OPERATING, MAINTENANCE AND SERVICE MANUAL WITH PARTS LIST**



### **AMCA INTERNATIONAL**

CONSUMER & AUTOMOTIVE PRODUCTS DIVISION  
2701 INDUSTRIAL DRIVE  
BOWLING GREEN, KY 42101

FA2176

079019-01  
REV B

# WARNING

## Safety Requirements

IMPORTANT: READ AND UNDERSTAND OWNER'S MANUAL BEFORE STARTING OR SERVICING!

IMPROPER USE OF THIS HEATER CAN RESULT IN SERIOUS BODILY INJURY DUE TO HAZARDS OF FIRE OR EXPLOSION, CARBON MONOXIDE POISONING, BURN, AND ELECTRICAL SHOCK.

NEVER USE GASOLINE, NAPHTHA, PAINT-THINNERS, ALCOHOL OR OTHER VOLATILE FUELS!

USE ONLY IN AREAS FREE OF FLAMMABLE VAPOR OR HIGH DUST CONTENT. NEVER USE HEATER WHERE GASOLINE, PAINT THINNER OR OTHER HIGHLY FLAMMABLE VAPORS ARE PRESENT.

USE ONLY IN WELL VENTILATED ROOMS. PROVIDE VENTILATION OF AT LEAST ONE (1) SQUARE FOOT.

NEVER ATTACH DUCT WORK TO FRONT OF HEATER.

USE ONLY WITH ELECTRICAL VOLTAGE AND FREQUENCY SPECIFIED ON MODEL PLATE.

USE ONLY A PROPERLY GROUNDED THREE-WIRE EXTENSION CORD.

MAKE SURE HOT AIR OUTLET IS AT LEAST FIVE (5) FEET FROM COMBUSTIBLE MATERIALS.

FOR BEST RESULTS, USE ONLY KEROSENE OR NO. 1 FUEL OIL.

UNPLUG HEATER BEFORE FILLING FUEL TANK.

HEATER MUST BE LEVEL WHILE HOT OR OPERATING, OR A FIRE MAY OCCUR.

DO NOT MOVE, HANDLE OR SERVICE A HOT OR OPERATING HEATER.

WHEN USED WITH THERMOSTAT, HEATER MAY START ANYTIME!

KEEP CHILDREN AWAY FROM HEATER AT ALL TIMES. NEVER LEAVE A HEATER PLUGGED IN WITHOUT AN ADULT PRESENT IF CHILDREN OR ANIMALS ARE LIKELY TO BE PRESENT.

NEVER USE HEATER WHILE SLEEPING.

STORE IN A LEVEL POSITION WHEN FILLED OR FUEL LEAKAGE MAY OCCUR.

USE ONLY IN ACCORDANCE WITH LOCAL ORDINANCES AND CODES.

Safety requirements and model plate data comply with AMERICAN NATIONAL STANDARD INSTITUTE, INC. Safety Requirements: ANSI A10.10-1970.

# TABLE OF CONTENTS

---

Congratulations - You have just purchased one of the finest oil-fired heaters on the market today. Your HandyMaster® heater has been designed and engineered to provide you with years of warm comfort. You will need to read this manual carefully before using your HandyMaster® heater.

Warning.....	1
Table of Contents.....	2
Unpacking.....	2
Ventilation.....	3
Fuels.....	3
Specifications.....	3
Operation.....	4
Storage.....	4
Maintenance.....	5
Troubleshooting.....	6-8
Parts.....	9-10
Wiring Diagram .....	11
Service Centers.....	12-25
Accessories.....	INSIDE BACK COVER
Warranty.....	BACK COVER

## UNPACKING

---

1. Remove all protective material which may have been applied to the heater for shipment.
2. Remove the heater from the carton.
3. Check the heater for possible shipping damage, if any damage is found, IMMEDIATELY notify the dealer where you purchased the heater.

# VENTILATION

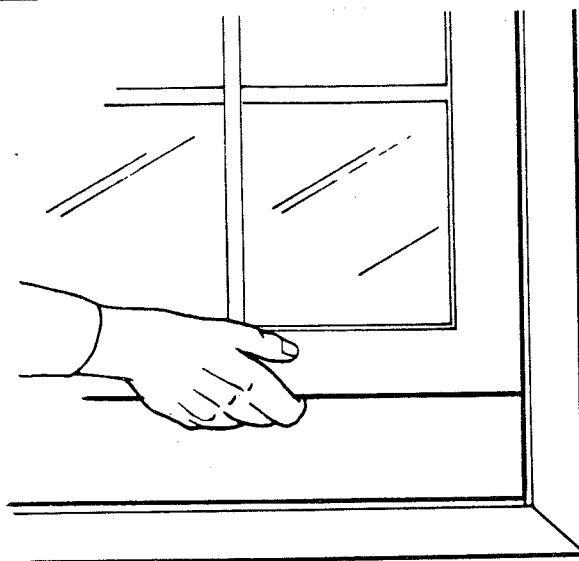
**WARNING: USE ONLY IN WELL VENTILATED AREAS.**

## FRESH AIR OPENING REQUIREMENTS

HEATER SIZE      SQUARE FOOT OPENING

28,000 BTU                      1.0

Note: If more than one heater is being used provide additional fresh air.



# FUELS

1. Use only kerosene or #1 fuel oil.
2. Never use gasoline, naptha, paint thinners, alcohol or other volatile fuels.
3. Use of #2 fuel oil or #2 diesel oil may result in:
  - a. More frequent clogging of fuel filter and nozzle.
  - b. The formation of carbon on the spark plug.

Do not allow your spark plug to get a carbon buildup on the electrodes.

Carbon deposits on the spark plug can cause interrupted starting and raw fuel emission from the heater.

## FUEL SOURCE

FUELS CAN BE PURCHASED AT YOUR LOCAL GASOLINE SERVICE STATION OR LOOK IN THE TELEPHONE DIRECTORY UNDER "KEROSENE" TO FIND ANOTHER SOURCE.

# SPECIFICATIONS

Output Rating (BTU Per Hour)  
Fuel  
Fuel Tank Capacity (U. S. Gallons)  
Fuel Consumption (Approx. U. S. Gal. Per Hr.)  
Electric Requirements  
Amperage  
Motor RPM  
Hot Air Output (Approx. CFM)  
Air Pump Pressure (PSI)  
Shipping Weight (Approx. Lbs.)  
Heater Weight Without Fuel (Approx. Lbs.)

28,000  
Use Only Kerosene or #1 Fuel Oil  
2.25  
0.24  
120 Volt 60 Hz  
2.5  
1740  
100  
3  
32  
28

# OPERATION

---

## THEORY OF OPERATION

There are four basic systems within the heater. The fuel system, the air system, the ignition system, and the flame-out control system.

An air pump on one end of the motor shaft forces air through the air tube and out of the burner nozzle. The moving air creates a pressure differential in the burner head causing fuel to be drawn from the tank. The fuel and air mix is sprayed into the combustion chamber in a fine mist.

Additional air is supplied to the combustion chamber by a fan on the opposite end of the motor shaft. Ports around the burner head allow a portion of the air being moved by the fan to enter the combustion chamber to support combustion. The remaining air is directed around and over the combustion chamber. This air mixes with the heated air from the combustion chamber and is ejected as a jet of clean, heated air.

The ignition system consists of a transformer and a spark plug. The transformer creates a spark between the electrodes of the spark plug and ignites the fuel and air mixture within the combustion chamber. The spark plug fires constantly during operation.

A light sensitive (photo) cell detects the flame. If the flame should fail, the photocell causes the safety control to automatically trip the circuit breaker, thereby causing the heater to shut down.

## STARTING PROCEDURE

1. Fill fuel tank with correct fuel. See charts on fuel.
2. The heater has a short power cord; use an extension cord of at least six (6) feet long.
3. Make sure the front, hot air outlet, is at least five (5) feet from any flammable materials.
4. Check reset button to be sure it is pushed in.
5. Heater will start when plugged in. Outlet must be grounded.

# STORAGE

---

**WARNING:** Always unplug heater before servicing.

Store heater in a dry location, free of corrosive fumes and dust.

## FUEL TANK

Flush tank with clean fuel before storing. Drain all fuel from tank.

## AIR FILTERS

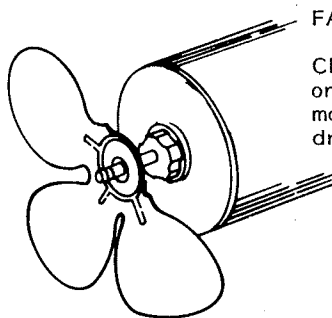
Remove and clean or replace filters if necessary.

## SPARK PLUG

Clean and adjust spark plug, or replace if necessary.

# MAINTENANCE

**WARNING:** Always unplug heater before servicing.

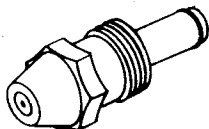


FAN BLADES

Clean after every 500 hours of operation or as necessary. Use a soft cloth moistened with kerosene or solvent, then dry thoroughly.

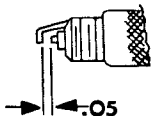
NOZZLE

Clean at least once during heater season. Remove burner head. Use a socket wrench to remove nozzle. Blow through the face (outlet) end **ONLY**. **IMPORTANT:** Protect nozzle face from damage while out of the heater.

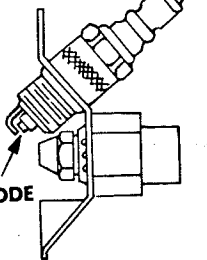


SPARK PLUG

After every 300 hours of operation, clean and adjust spark plug electrodes. Adjust gap or replace spark plug as required. Spark plug gap: .05 inches.

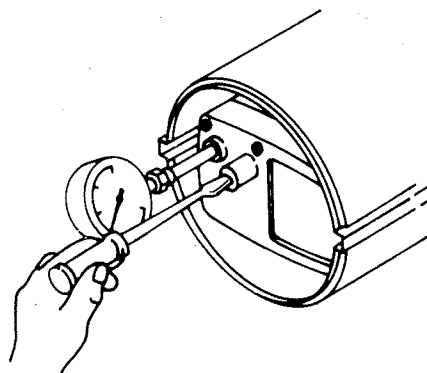


**ROTATE SPARK PLUG TO POSITION ELECTRODE AS SHOWN**



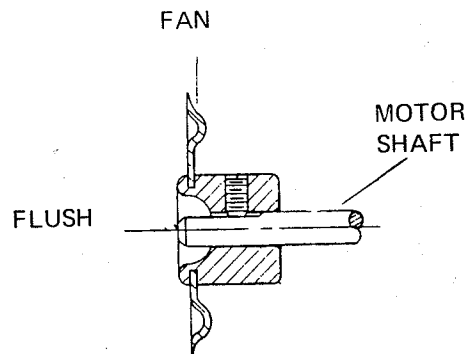
## ADJUSTMENT OF PUMP PRESSURE

- Remove the plug from the air filter housing and install the pressure gauge, HA1180.
- To adjust the pump pressure, turn the pressure relief valve in to raise, out to lower.
- After adjustment, remove the gauge and replace the plug.



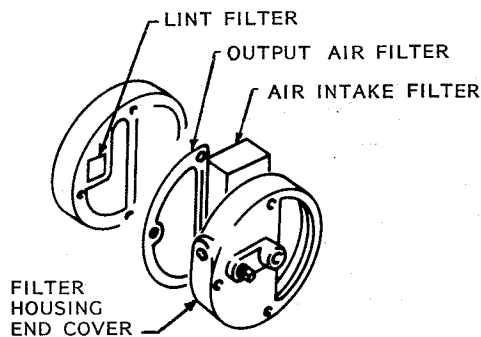
## CAUTION

When removing the motor from the heater, always remove the fan first. The weight of the motor resting on the fan could damage the fan pitch. When replacing the fan on the motor shaft, place the fan hub flush with the motor shaft as shown.



## AIR FILTERS

Check frequently for dust film. To clean, remove the filter from housing, wash with mild detergent and dry thoroughly before replacing. Replace once each season. **IMPORTANT:** Do Not oil the filter elements.



# TROUBLESHOOTING

SYMPTOM	POSSIBLE CAUSE	CORRECTIVE ACTION
Motor does not start; thermostat (if used) is set to call for heat.	Electrical Troubles	
	<ol style="list-style-type: none"> <li>1. No power or low voltage at heater.</li> <li>2. Damaged motor.</li> <li>3. Thermostat damaged (if used).</li> </ol>	<ol style="list-style-type: none"> <li>1a. Be sure power is reaching heater; check condition of heater cord. Repair or replace.</li> <li>b. Use extension cord with wires heavy enough to carry the electrical load of the heater.</li> <li>c. Be sure voltage at outlet is same as shown on heater instruction plate.</li> <li>2. Check motor. Replace damaged motor.</li> <li>3. Replace. Not a serviceable part.</li> </ol>
Heater will not ignite, but motor runs for a short time.	Mechanical Troubles	
	<ol style="list-style-type: none"> <li>1. Fan obstructed by mechanical damage or dirt.</li> </ol>	<ol style="list-style-type: none"> <li>1a. Check for bent outer shell.</li> <li>b. Check for damaged fan; replace if damaged.</li> <li>c. Check for damaged motor mount; replace if damaged.</li> <li>d. Check for tight pump; replace if damaged.</li> </ol>
Heater will not ignite, but motor runs for a short time.	Fuel System Troubles	
	<ol style="list-style-type: none"> <li>1. Fuel tank empty, water in fuel, wrong fuel.</li> <li>2. Fuel filter clogged.</li> <li>3. Nozzle plugged or damaged.</li> <li>4. Extremely low temperature may cause fuel to thicken and not flow.</li> <li>5. Dirty air filters.</li> <li>6. Air leak at fuel filter.</li> </ol>	<ol style="list-style-type: none"> <li>1a. Add fuel to tank.</li> <li>b. Check for water in tank; clean tank and fuel filter if water is found (water in the tank will form globules in the bottom which you can see).</li> <li>c. Add fresh, clean fuel to tank.</li> <li>2. Remove and wash in clean fuel. Blow dry and replace.</li> <li>3a. Clean by blowing compressed air through nozzle from outlet end of nozzle.</li> <li>b. Replace nozzle if cleaning does not solve the problem.</li> <li>4. Use a non toxic anti-icer such as "Heet", "Methanol Alcohol", or "Frostex."</li> <li>5. Be sure air filters are clean.</li> <li>6. Check fuel filter for air leaks and for tightness of fit where it is connected to fuel line.</li> </ol>

# TROUBLESHOOTING

SYMPTOM	POSSIBLE CAUSE	CORRECTIVE ACTION
(Continued) Heater will not ignite, but motor runs for a short time.	Ignition Troubles	
	1. Spark plug wire disconnected from plug.  2. Damaged spark plug (wrong gap, plug wet with fuel or electrodes carboned, or plug damaged).  3. Damaged transformer.	CAUTION: Disconnect heater cord! 1. Check to be sure wire is tight.  2a. Gap between electrodes should be .05" or about thickness of a dime. Adjust electrode gap. b. Inspect plug for worn or eroded electrodes. c. Replace a damaged spark plug.  CAUTION: High Voltage 3. Connect heater cord. Disconnect spark plug wire and check transformer for spark; replace if no spark can be obtained.
Heater burns, but puffs of smoke can be seen; heater will not burn steady; heater burns with odor; heater smokes continuously.	Improper Fuel-Air Mixture (Not Enough Fuel)	
	1. Heater running out of fuel; water condensation in fuel tank; wrong fuel.  2. Dirty air filters causing reduced air flow through nozzle, resulting in low fuel flow.  3. Fuel filter loose, dirty or connection loose.  4. Dirty nozzle.  5. Fan blade.  6. Loose air output line connections between filter housing and burner.  7. Rubber sleeve on shank of nozzle is leaking (remote possibility).	1a. Shut heater off; check fuel tank. If you can see globules of water in the bottom, drain and flush the tank and filter with clean fuel. b. Add fresh, clean fuel to tank.  2. Remove and clean the air filters. Be sure air intake is not blocked.  3a. Remove and wash fuel filter in clean fuel. b. Check condition of connection between fuel line and burner. c. Replace with new fuel line.  4a. Remove and clean the burner head. b. Blow compressed air through nozzle from outlet end. Never use a drill, wire, or other tool to open a nozzle passage.  5. Check for excessive dirt accumulation on fan blade which could be causing motor to slow down.  6. Be sure connections are tight.  7. If heater puffs intermittently, replace the rubber sleeve (handle parts carefully to prevent damage, assemble them carefully to preserve airtightness).

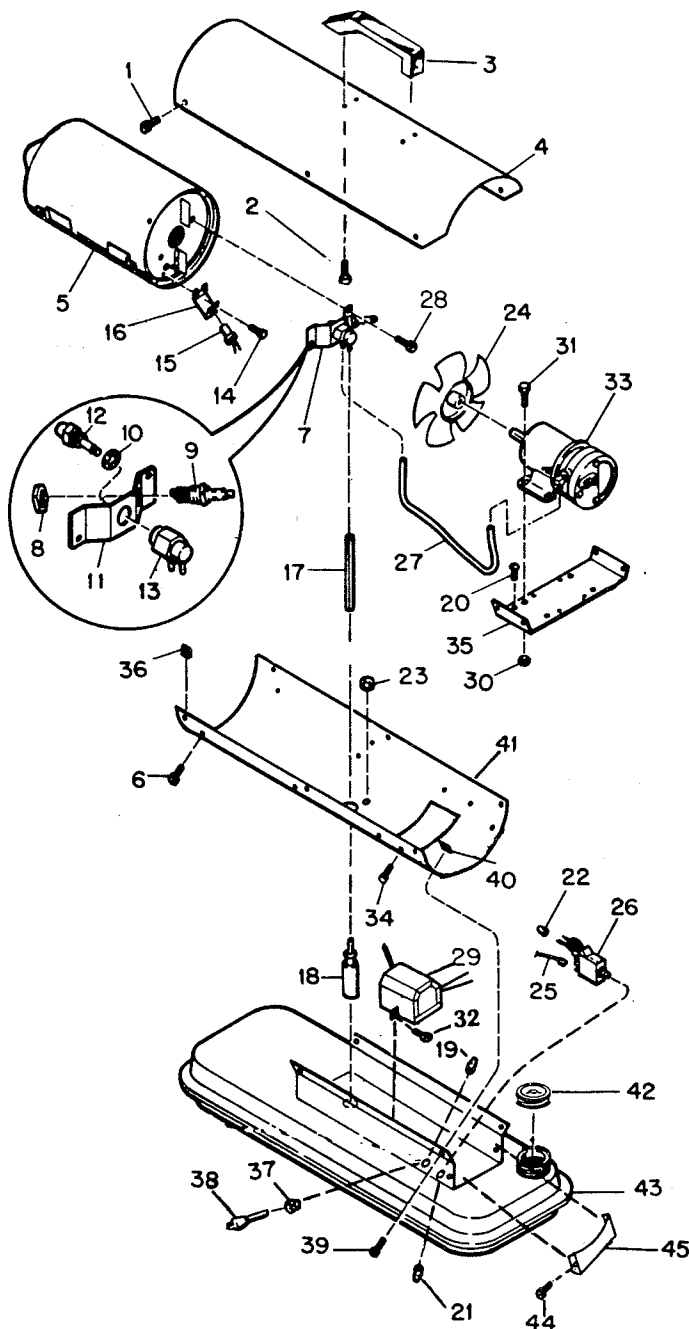


# TROUBLESHOOTING

SYMPTOM	POSSIBLE CAUSE	CORRECTIVE ACTION
Flames come out front of heater.	<p>Improper Fuel-Air Mixture (Too much fuel, or not enough air for amount of fuel being supplied)</p> <ol style="list-style-type: none"> <li>1. Dirty fan, or air passageway through heater blocked by dirt or trash.</li> <li>2. Fan loose or improperly located on shaft.</li> <li>3. Bent or damaged fan.</li> <li>4. High pump pressure.</li> </ol>	<ol style="list-style-type: none"> <li>1. Clean the fan. Be sure the air passageway through the heater is clean. Keep the heater clean.</li> <li>2. Check fan; tighten or reposition.</li> <li>3. Replace. Do not attempt repair of fan.</li> <li>4. Check pressure.</li> </ol>
Heater cycles intermittently.	<p>Electrical System Troubles</p> <ol style="list-style-type: none"> <li>1. Damaged electrical supply or damaged connections.</li> </ol>	<ol style="list-style-type: none"> <li>1a. Be sure extension cord and heater service cord are in good condition, without intermittent open circuits.</li> <li>b. Check mechanical and electrical soundness of all wiring connections in the heater and service cord.</li> </ol>
Heater ignites, but button of safety control circuit breaker pops out anyway.	<ol style="list-style-type: none"> <li>1. Dirty photocell.</li> <li>2. Damaged photocell.</li> <li>3. Damaged safety control.</li> <li>4. Damaged electrical connections through photocell and safety control.</li> </ol>	<ol style="list-style-type: none"> <li>1. Check to see if glass face of cell is so dirty it cannot "see" the flame; clean glass if dirty.</li> <li>2. Replace photocell.</li> <li>3. Replace safety control.</li> <li>4. Be sure all solder joints and wiring connections are secure. Check wiring diagram.</li> </ol>
Safety control circuit breaker fails to trip when a no-flame condition exists.	<ol style="list-style-type: none"> <li>1. Damaged circuit breaker.</li> <li>2. Safety control dirty or damaged.</li> <li>3. Photocell electrical leads shorted.</li> </ol>	<ol style="list-style-type: none"> <li>1. Replace circuit breaker.</li> <li>2. Replace safety control.</li> <li>3. Check photocell leads for shorted leads. Replace photocell if damaged.</li> </ol>
Button on safety control circuit breaker will not stay in when pressed.	<ol style="list-style-type: none"> <li>1. Resetting is tried too soon after the breaker trips.</li> <li>2. Damaged circuit breaker.</li> </ol>	<ol style="list-style-type: none"> <li>1. Wait five (5) minutes and try again.</li> <li>2. Replace circuit breaker.</li> </ol>

# PARTS - MODEL HM28

This list contains replaceable parts used in your heater. When ordering parts, be sure to provide the correct model and assembly numbers (from the nameplate decal), then the part number and description of the desired part.



HEATER EXPLODED VIEW

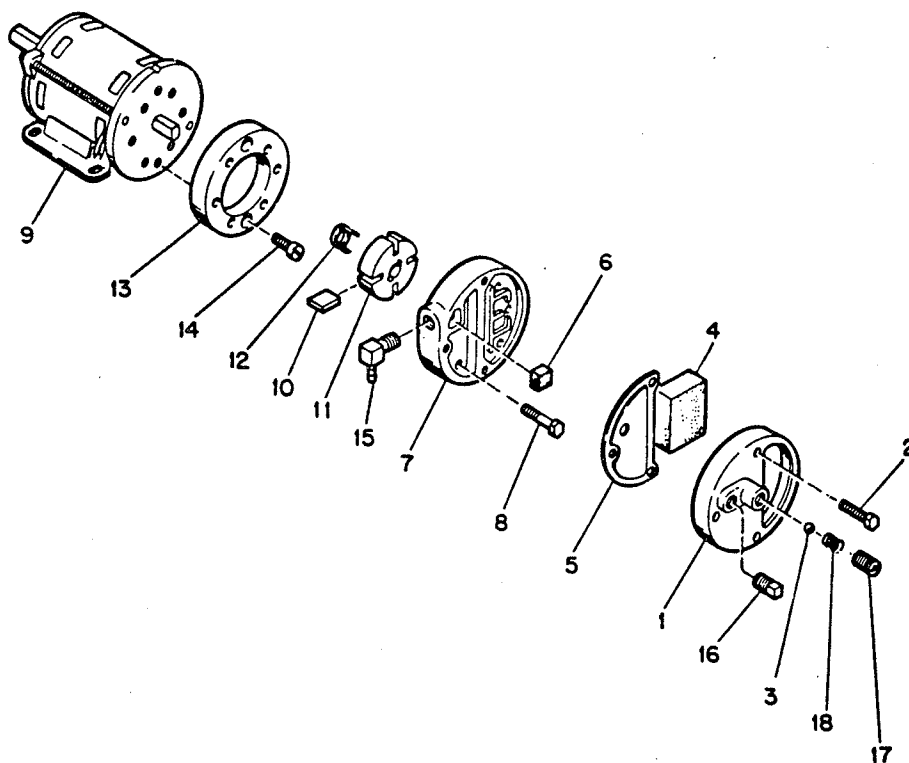
KEY NO.	PART NUMBER	PART DESCRIPTION	QTY
1	M11084-27	Screw, Hex Head (10-16 x 1/2)	6
2	M50589-01	Screw, Handle	2
3	M51104-01	Handle	1
4	079014-01BG	Shell, Upper	1
5	M29634-01	Combustion Chamber Assembly	1
6	M11084-26	Screw, Hex Head (10-16 x 3/8)	4
7	M29707-01	Burner Head Assembly	1
8	M29824	Nut, Special 14 MM	1
9	M29835	Spark Plug	1
10	M16741-18	Ring, Retaining	1
11	M29615-01	Bracket, Assembly	1
	M29705-01	Nozzle Adaptor Assembly (key numbers 12 and 13)	
12	M29681	Nozzle Siphon	1
13	M29805	Adaptor, Nozzle	1
14	M10908-2	Screw, Hex Head (6-32 x 3/8)	2
15	M16656-4	Photocell and Bushing Assembly	1
16	M16660	Bracket, Photocell	1
17	M29652-02	Fuel Line (Rubber Tubing)	1
18	M50876-01	Fuel Filter Assembly	1
19	M13942-6	Connector, Wire	1
20	M11084-26	Screw, Hex Head (Grounding, 10-16 x 3/8)	1
21	M13942-5	Connector, Wire	1
22	M13942-7	Connector, Wire	1
23	1000576	Grommet	2
24	M29678	Fan	1
25	M16841-16	Wire Assembly (Red)	1
26	M28898-03	Flame-Out Control (Safety)	1
27	M29652-01	Airline (Rubber Tubing)	1
28	M11084-26	Screw, Hex Head (10-16 x 3/8)	2
29	M16697-01	Transformer (5000 Volt)	1
30	NTC-3C	Nut (10-24)	4
31	M12461-50	Screw, Hex Head (10-24 x 3/8)	4
32	M11084-26	Screw, Hex Head (10-16 x 3/8)	2
33	M29750-01	Motor and Pump Assembly	1
34	M11084-26	Screw, Hex Head (Secures Motor Support Bracket to Lower Shell, 10-16 x 3/8)	4
35	M29616	Motor Mounting Bracket	1
36	M11271-6	Nut, Clip	6
37	M11143-1	Bushing, Strain Relief	1
38	M10813-74	Power Cord	1
39	M11084-27	Screw, Hex Head (Secures Lower Shell in Position, 10-16 x 1/2)	4
40	M11271-6	Nut, Clip	4
41	079015-01BG	Shell, Lower	1
42	M51027-09	Kit, Fuel Cap	1
43	079017-01BD	Fuel Tank Assembly	1
44	M11084-26	Screw, Hex Head (10-16 x 3/8)	2
45	079016-01BD	Bracket, End Cover	1

## PARTS AVAILABLE--NOT SHOWN

1	078949-01	Decal, Tradename
2	078949-02	Decal, Tradename
3	M30728	Decal, Wiring Diagram
4	M50011	Decal, Spark Plug
5	079039-01	Decal, Warning
6	079018-01	Decal, Information

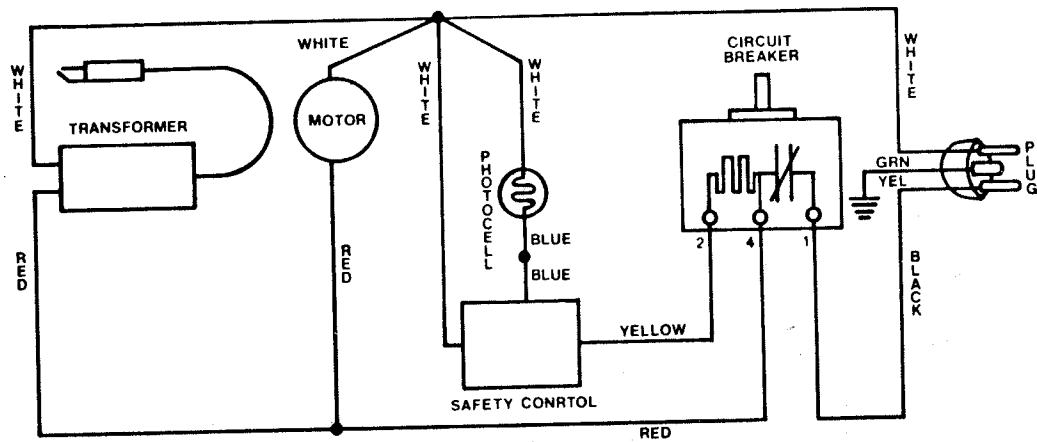
# PARTS

KEY NO.	PART NUMBER	PART DESCRIPTION	QTY
	M29750-01	MOTOR AND PUMP ASSEMBLY	
1	M29609	Filter End Cover	1
2	M12461-31	Screw, Hex Head (10-32 x 1)	3
3	M8940	Ball, Steel (1/4 Dia)	1
4	M29633	Intake Air Filter	1
5	M29612-01	Output Filter Assembly	1
6	M29632	Lint Filter	1
7	M29608	Pump End Cover	1
8	M12461-31	Screw, Hex Head (10-32 x 1)	6
9	M29780-01	Motor (120 V, 60 Hz)	1
10	M8643	Blade	4
11	M22456-1	Rotor, Pump	1
12	M22009	Insert, Rotor	1
13	M8645	Pump Body	1
14	FHPF3-4C	Screw, Fillister Head (10-32 x 1/2)	2
15	M50016	Elbow, 90°	1
16	M22997	Plug, Pipe	1
17	M27694	Screw, Pressure Adjustment	1
18	M10993-1	Spring, Pressure Relief	1

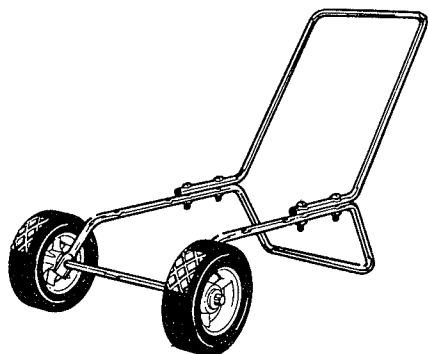


MOTOR AND PUMP ASSEMBLY  
EXPLODED VIEW

# WIRING DIAGRAM

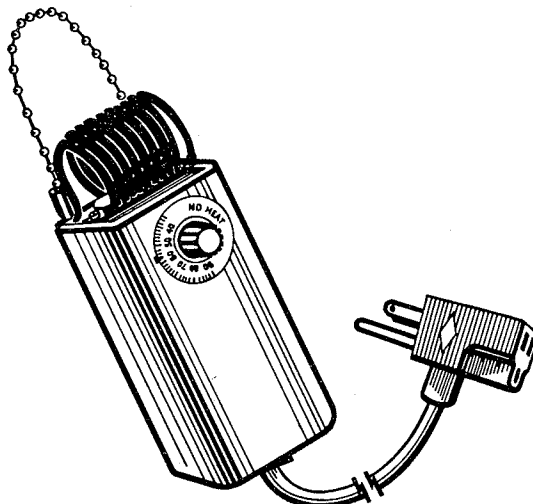


# ACCESSORIES



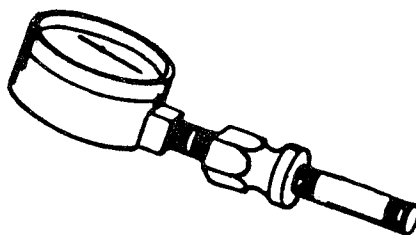
**WHEELS AND HANDLE KIT - HA1181**

Makes heater even more portable and convenient.  
Easy to assemble.



**THERMOSTAT KIT - HA1200**

Keeps your building at the temperature you select day and night.



**AIR GAUGE KIT - HA1180**

Special tool to check air pressure.

## OWNER'S REGISTRATION

Please complete and return this postage paid card as soon as possible.

Model \_\_\_\_\_ Serial No. \_\_\_\_\_

Customer Name \_\_\_\_\_

Address \_\_\_\_\_ City \_\_\_\_\_ State \_\_\_\_\_ Zip \_\_\_\_\_

Date Purchased \_\_\_\_\_ Phone No. (\_\_\_\_) \_\_\_\_\_

This Will Be Used: On Farm \_\_\_\_\_ In Garage \_\_\_\_\_ Construction Site \_\_\_\_\_ For Rental \_\_\_\_\_  
Other (specify) \_\_\_\_\_

Age of Purchaser: 30 or less \_\_\_\_\_ 31 to 40 \_\_\_\_\_ 41 to 50 \_\_\_\_\_ 51 to 60 \_\_\_\_\_ 61 & over \_\_\_\_\_

Sex: Male \_\_\_\_\_ Female \_\_\_\_\_

Approx. Family Income: \$12,000 or less \_\_\_\_\_ \$12,000 to \$18,000 \_\_\_\_\_ \$18,000 to \$24,000 \_\_\_\_\_  
\$24,000 to \$30,000 \_\_\_\_\_ \$30,000 or more \_\_\_\_\_

Where Do You Live? City \_\_\_\_\_ Suburb \_\_\_\_\_ Rural \_\_\_\_\_

What Influenced You To Purchase Your Heater?

TV Ad \_\_\_\_\_ Magazine Ad \_\_\_\_\_ Local Newspaper Ad \_\_\_\_\_

Price \_\_\_\_\_ Warranty \_\_\_\_\_ Feature or Features \_\_\_\_\_

Other \_\_\_\_\_

What Price Did You Pay For Your Heater? \$ \_\_\_\_\_

Store Name: \_\_\_\_\_

Store Address: \_\_\_\_\_ City \_\_\_\_\_ State \_\_\_\_\_

Type of Store: Department \_\_\_\_\_ Hardware \_\_\_\_\_ Discount \_\_\_\_\_ Farm \_\_\_\_\_ Home Center \_\_\_\_\_  
Appliance \_\_\_\_\_ Other (specify) \_\_\_\_\_

## KEEP THIS WARRANTY

Model \_\_\_\_\_

Serial No. \_\_\_\_\_

Date Purchased \_\_\_\_\_

Fill in above information for your own record

**ALWAYS SPECIFY MODEL AND SERIAL NUMBERS WHEN COMMUNICATING WITH THE FACTORY.**

WE RESERVE THE RIGHT TO AMEND THESE SPECIFICATIONS AT ANY TIME WITHOUT NOTICE. THE ONLY WARRANTY APPLICABLE IS OUR STANDARD WRITTEN WARRANTY. WE MAKE NO OTHER WARRANTY, EXPRESSED OR IMPLIED.

### LIMITED SIX MONTH WARRANTY (U.S.A.)

AMCA International, warrants this product to be free from defects in materials and workmanship for six months from the date of first purchase when operated and maintained in accordance with instructions.

This warranty covers only the cost of parts and labor required to restore this heater to proper operating condition. Transportation and incidental costs associated with warranty repairs are not reimbursable under this warranty.

Warranty service is available only from authorized dealers or service centers.

This warranty does not cover repairs necessary due to normal wear, misuse, accidents, or lack of proper maintenance. Regular routine maintenance is the responsibility of the owner.

AMCA International assumes no responsibility for indirect, incidental or consequential damages. Some states do not allow the exclusion or limitation of incidental and consequential damages so the above may not apply to you.

**THIS EXPRESS WARRANTY IS GIVEN IN LIEU OF ANY OTHER WARRANTY EITHER EXPRESS OR IMPLIED, INCLUDING WARRANTIES OR MERCHANTABILITY AND FITNESS FOR A PARTICULAR PURPOSE.**

This warranty gives you specific legal rights and you may have other rights which vary from state to state.

For information, write: AMCA International, P.O. Box 719, Bowling Green, Kentucky 42101  
Attention: Customer Service Dept.



FIRST CLASS  
PERMIT NO. 521  
Bowling Green,  
Kentucky 42101

### BUSINESS REPLY CARD

No Postage Stamp Necessary If Mailed In The United States



**AMCA  
INTERNATIONAL**

CONSUMER AND AUTOMOTIVE PRODUCTS DIVISION  
2701 INDUSTRIAL DRIVE  
BOWLING GREEN, KY 42101

