

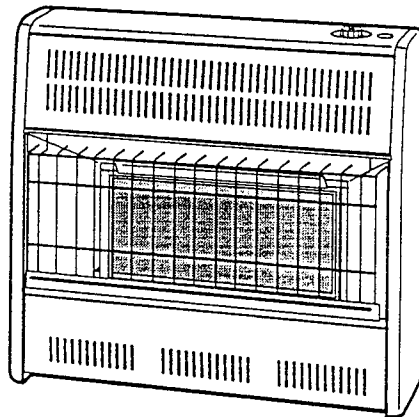
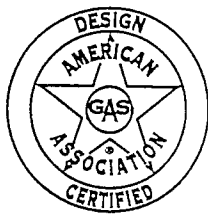
Medallion

INFRARED VENT-FREE NATURAL GAS HEATER

This appliance may be installed in an aftermarket* manufactured (mobile) home, where not prohibited by state or local codes.

* Aftermarket: Completion of sale, not for purpose of resale, from the manufacturer

OWNER'S OPERATION AND INSTALLATION MANUAL



Models:
MR18NT
and
MR30NT

WARNING: If the information in this manual is not followed exactly, a fire or explosion may result causing property damage, personal injury, or loss of life.

- Do not store or use gasoline or other flammable vapors and liquids in the vicinity of this or any other appliance.
- **WHAT TO DO IF YOU SMELL GAS**
 - Do not try to light any appliance.
 - Do not touch any electrical switch; do not use any phone in your building.
 - Immediately call your gas supplier from a neighbor's phone. Follow the gas supplier's instructions.
 - If you cannot reach your gas supplier, call the fire department.
- Installation and service must be performed by a qualified installer, service agency, or the gas supplier.

WARNING: Improper installation, adjustment, alteration, service, or maintenance can cause injury or property damage. Refer to this manual for correct installation and operational procedures. For assistance or additional information consult a qualified installer, service agency, or the gas supplier.

WARNING: This is an unvented gas-fired heater. It uses air (oxygen) from the room in which it is installed. Provisions for adequate combustion and ventilation air must be provided. Refer to Air for Combustion and Ventilation section on page 5 of this manual.

This appliance may be installed in an aftermarket *manufactured (mobile) home, where not prohibited by state or local codes.*

Aftermarket: Completion of sale, not for purpose of resale, from the manufacturer. (I.E. Installation of this product is permitted after the manufactured (mobile) home is sited)

This appliance is only for use with the type of gas indicated on the rating plate.

This appliance is not convertible for use with other gases.

Save this manual for future reference.

REPLACEMENT PARTS

Note: Use only original replacement parts. This will protect your warranty coverage for parts replaced under warranty.

Parts Under Warranty

Contact authorized dealer from whom you purchased this product. If they are unable to supply original replacement part(s), call C.U.I.'s Technical Service Department at 1-800-922-7407 for information.

When contacting your dealer or C.U.I., have ready:

- your name
- your address
- model number of your heater
- how heater was malfunctioning
- type of gas used (propane/LP or natural gas)
- purchase date

Usually, we will ask you to return the defective part to the factory.

Parts Not Under Warranty

Contact authorized dealers of this product. If they can't supply original replacement part(s), call C.U.I.'s Parts Department at 1-800-922-7407 for referral information.

When calling C.U.I., have ready:

- model number of your heater
- the replacement part number

ACCESSORIES

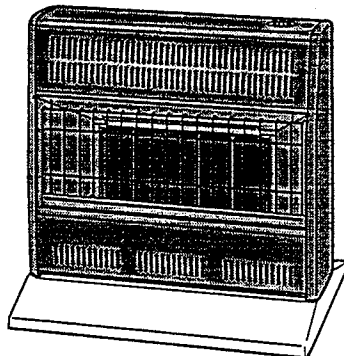
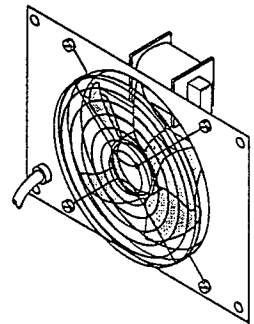
Purchase these heater accessories from your local dealer. If they can not supply these accessories, call C.U.I.'s Parts Department at 1-800-922-7407 or write to the address listed on the back page of this manual for referral information.

FAN KITS - GA3850 and GA3800T

For all models. Provides better heat distribution. Makes heater more efficient. Complete installation and operating instructions included.

Manually controlled - GA3850. Includes ON/OFF switch.

Thermostatically controlled - GA3800T. Includes three settings: ON/OFF/AUTO.



FLOOR MOUNTING STAND

Model MR18NT - GA4520L

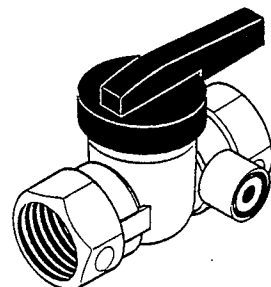
Model MR30NT - GA4530L

For locating heater on the floor, away from a wall.

Complete installation instructions provided with floor mounting stand.

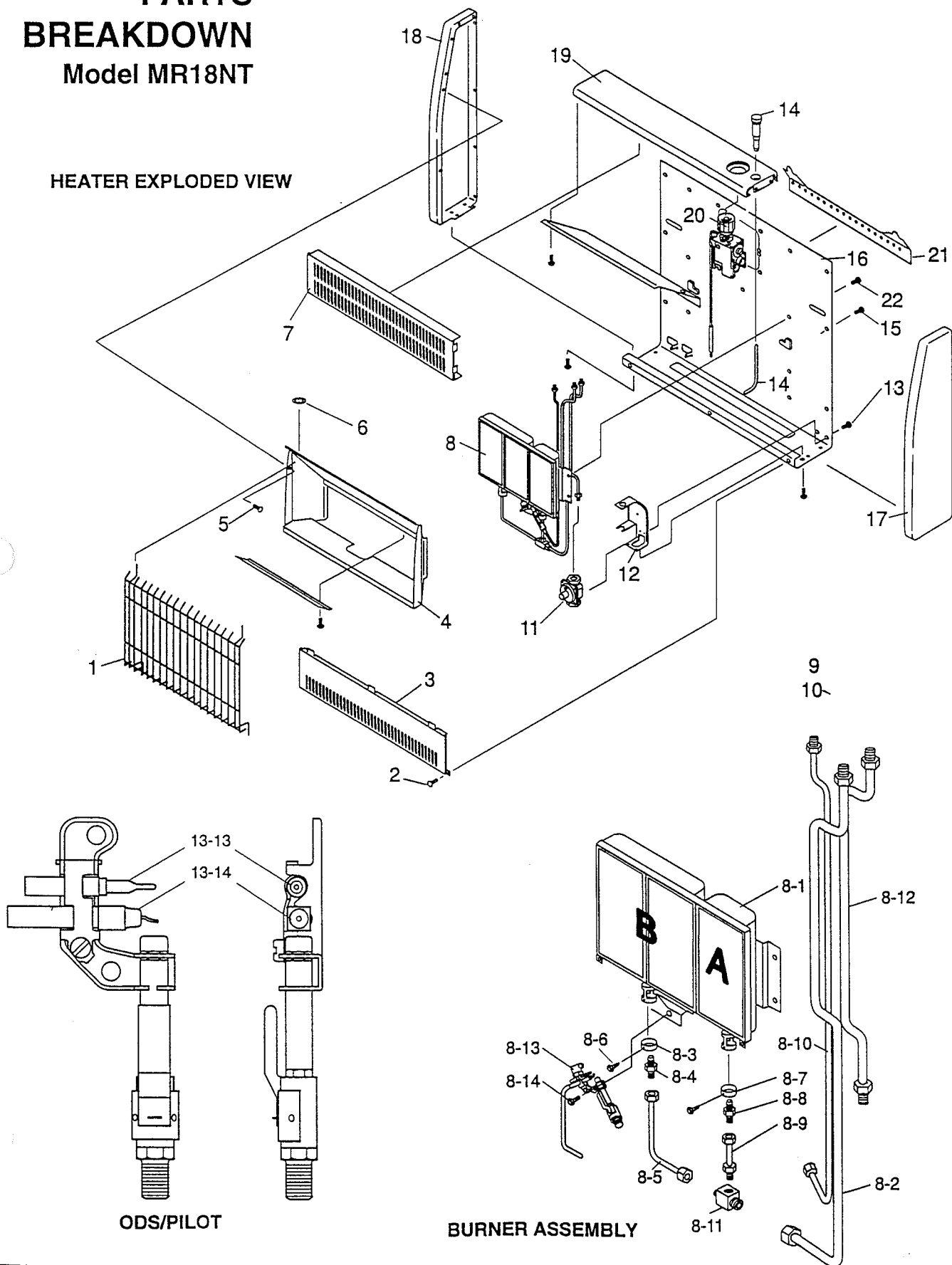
MANUAL SHUTOFF VALVE - GA5010

For all models. Manual shutoff valve with 1/8" NPT tap.



ILLUSTRATED PARTS BREAKDOWN Model MR18NT

HEATER EXPLODED VIEW



PARTS LIST

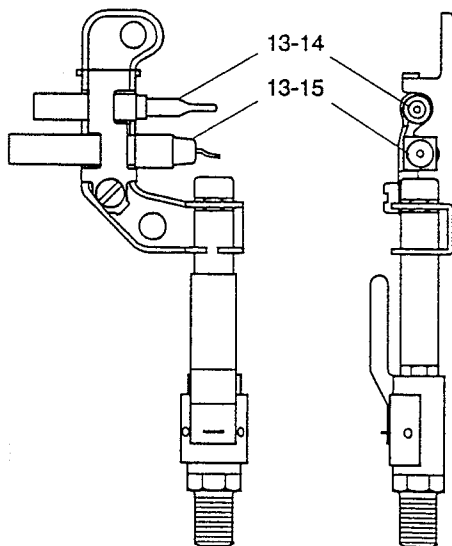
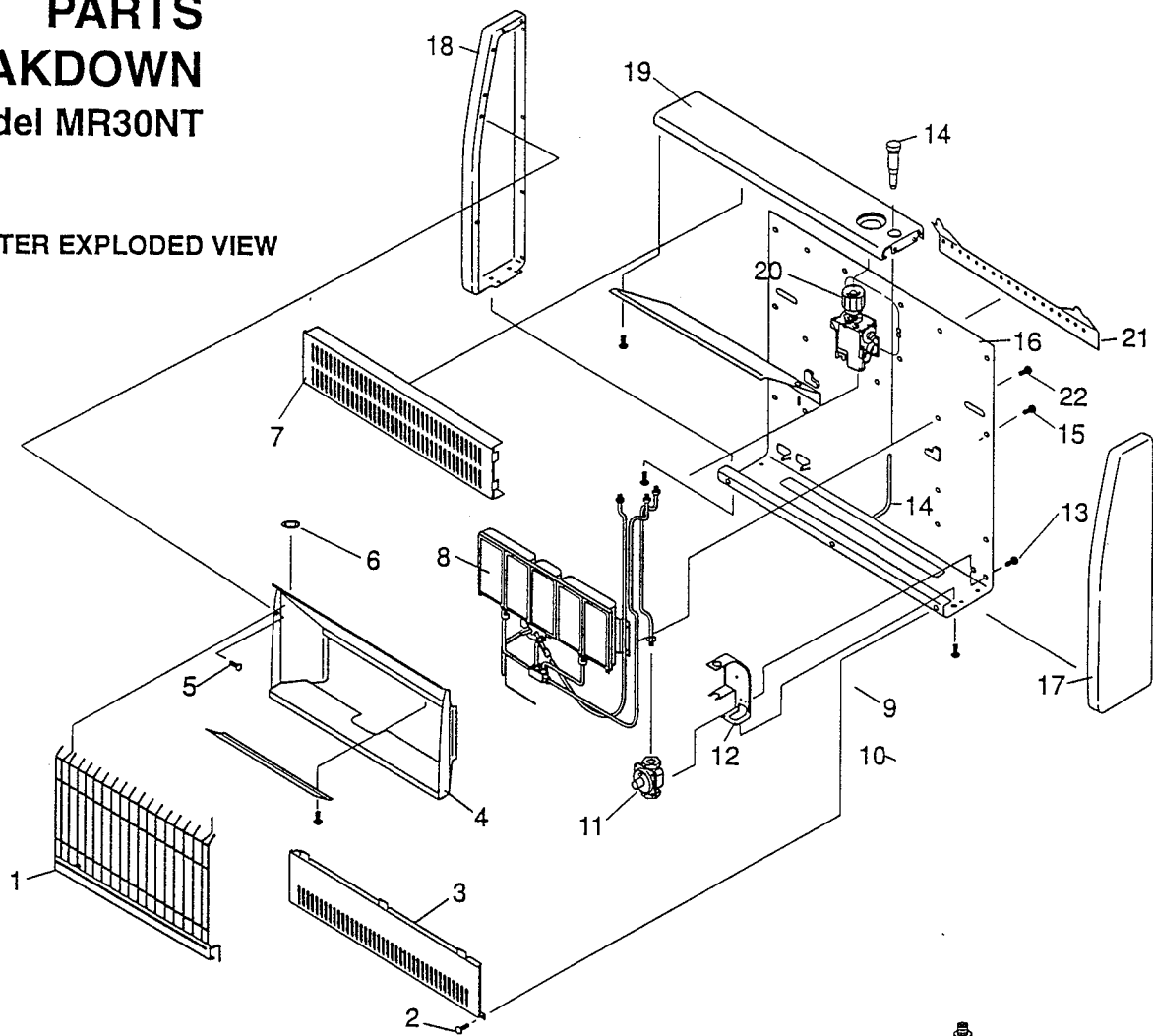
Model MR18NT

This list contains replaceable parts used in your heater. When ordering parts, follow the instructions listed under *Replacement Parts* on page 27 of this manual.

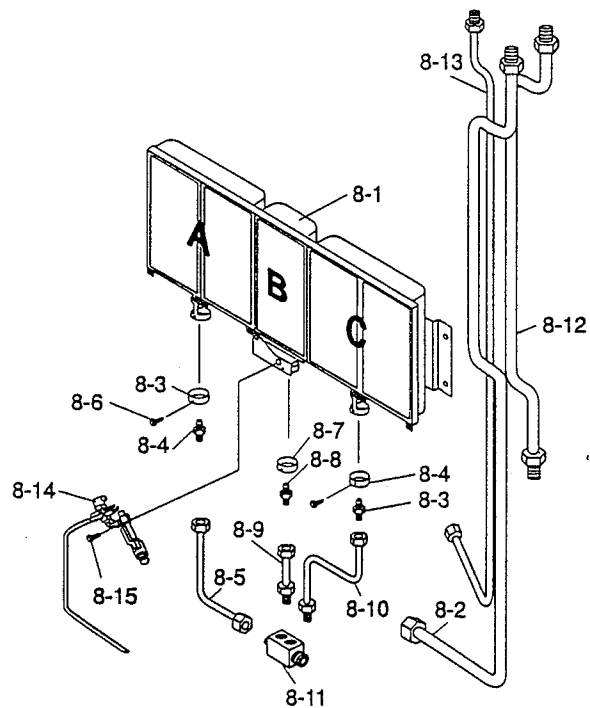
KEY NO.	PART NUMBER	DESCRIPTION	QTY.
1	000128-01	Grill Guard	1
2	011059-01	Screw	2
3	000102-01	Front Panel , Bottom	1
4	000500-01	Reflector Assembly	1
5	011059-02	Screw	14
6	021059-01	Clip - Grill Guard	2
7	000103-01	Front Panel , Top	1
8	See Detail	Burner Assembly	1
8-1	000111-01	Burner	1
8-2	000206-01	Valve Retainer Nut	1
8-3	000120-01	Injector Bracket - plaque A	1
8-4	000202-11	Injector - plaque A	1
8-5	000303-01	Tubing - Valve to plaque A	1
8-6	011059-03	Screw	4
8-7	000119-01	Injector Bracket - Plaque B	1
8-8	000201-11	Injector - Plaque B	1
8-9	000304-01	Tubing - Valve to Plaque B	1
8-10	000302-01	Pilot Tubing - Valve to Pilot	1
8-11	031059-01	Control Valve	1
8-12	000301-01	Inlet Tubing	1
8-13	031059-13	ODS / Pilot	1
8-14	011059-04	Screw	2
8-15	031059-04	Thermocouple	1
8-16	031059-05	Ignitor Electrode	1
9	000124-01	Control Rod	1
10	011059-03	Screw	1
11	031059-16	Regulator	1
12	000122-01	Bracket , Valve & Regulator	1
13	011059-06	Screw	2
14	031059-07	Piezo Ignitor , Snap - in	1
15	011059-07	Screw	27
16	000108-11	Back Panel	1
17	000104-01	Cabinet , Side Right	1
18	000104-02	Cabinet , Side Left	1
19	000103-01	Cabinet , Top	1
20	000401-01	Control Knob	1
21	000125-01	Mounting Bracket	1
22	011059-08	Screw	2
PARTS AVAILABLE - NOT SHOWN			
	100642-01	Hardware Assembly	1

ILLUSTRATED PARTS BREAKDOWN Model MR30NT

HEATER EXPLODED VIEW



ODS/PILOT



BURNER ASSEMBLY

PARTS LIST

Model MR30NT

This list contains replaceable parts used in your heater. When ordering parts, follow the instructions listed under *Replacement Parts* on page 27 of this manual.

KEY NO.	PART NUMBER	DESCRIPTION	QTY.
1	000128-02	Grill Guard	1
2	011059-01	Screw	3
3	000102-02	Front Panel , Bottom	1
4	000500-02	Reflector Assembly	2
5	011059-02	Screw	16
6	021059-01	Crip - Grill Guard	2
7	000103-02	Front Panel , Top	1
8	See Detail	Burner Assembly	1
8-1	000111-02	Burner	1
8-2	000206-01	Valve Retainer Nut	1
8-3	000119-01	Injector Bracket - Plaque A and C	2
8-4	000201-11	Injector - Plaque A and C	2
8-5	000305-01	Tubing - Valve to Plaque A	1
8-6	011059-03	Screw	6
8-7	000120-01	Injector Bracket - Plaque B	1
8-8	000202-11	Injector - Plaque B	1
8-9	000306-01	Tubing - Valve to Plaque B	1
8-10	000307-01	Tubing-Valve to Plaque C	1
8-11	031059-04	Control Valve	1
8-12	000301-01	Inlet Tubing	1
8-13	000302-02	Pilot Tubing - Valve to Pilot	1
8-14	031059-13	ODS / Pilot	1
8-15	011059-04	Screw	2
8-16	031059-04	Thermocouple	1
8-17	031059-05	Ignitor Electrode	1
9	00124-01	Control Rod	1
10	011059-05	Screw	1
11	031059-16	Regulator	1
12	000122-01	Bracket , Valve & Regulator	1
13	011059-06	Screw	2
14	031059-07	Piezo Ignitor , Snap - in	1
15	011059-07	Screw	30
16	000108-22	Back Panel	1
17	000104-01	Cabinet , Side Right	1
18	000104-02	Cabinet , Side Left	1
19	000103-02	Cabinet , Top	1
20	000401-01	Control Knob	1
21	000125-01	Mounting Bracket	1
22	011059-08	Screw	2
PARTS AVAILABLE - NOT SHOWN			
	100642-01	Hardware Assembly	1

WARRANTY INFORMATION

KEEP THIS WARRANTY

Model _____

Serial No. _____

Date Purchased _____

Always specify model and serial numbers when communicating with the factory.

We reserve the right to amend these specifications at any time without notice. The only warranty applicable is our standard written warranty. We make no other warranty, expressed or implied.

LIMITED WARRANTY MEDALLION VENT-FREE NATURAL GAS HEATERS

C.U.I. warrants this product to be free from defects in materials and components for two (2) years from the date of first purchase, provided that the product has been properly installed, operated and maintained in accordance with all applicable instructions. To make a claim under this warranty the Bill of Sale or cancelled check must be presented.

This warranty is extended only to the original retail purchaser. This warranty covers the cost of part(s) required to restore this heater to proper operating condition and an allowance for labor when provided by a C.U.I. Authorized Service Center. Warranty part(s) MUST be obtained through authorized dealers of this product and/or C.U.I. who will provide original factory replacement parts. Failure to use original factory replacement parts voids this warranty. The heater MUST be installed by a qualified installer in accordance with all local codes and instructions furnished with the unit.

This warranty does not apply to parts that are not in original condition because of normal wear and tear, or parts that fail or become damaged as a result of misuse, accidents, lack of proper maintenance or defects caused by improper installation. Travel, diagnostic cost, labor, transportation and any and all such other costs related to repairing a defective heater will be the responsibility of the owner.

TO THE FULL EXTENT ALLOWED BY THE LAW OF THE JURISDICTION THAT GOVERNS THE SALE OF THE PRODUCT; THIS EXPRESS WARRANTY EXCLUDES ANY AND ALL OTHER EXPRESSED WARRANTIES AND LIMITS THE DURATION OF ANY AND ALL IMPLIED WARRANTIES, INCLUDING WARRANTIES OF MERCHANTABILITY AND FITNESS FOR A PARTICULAR PURPOSE TO TWO (2) YEARS ON ALL COMPONENTS FROM THE DATE OF FIRST PURCHASE; AND C.U.I.'S LIABILITY IS HEREBY LIMITED TO THE PURCHASE PRICE OF THE PRODUCT AND C.U.I. SHALL NOT BE LIABLE FOR ANY OTHER DAMAGES WHATSOEVER INCLUDING INDIRECT, INCIDENTAL OR CONSEQUENTIAL DAMAGES.

Some states do not allow a limitation on how long an implied warranty lasts or an exclusion or limitation of incidental or consequential damages, so the above limitation on implied warranties, or exclusion or limitation on damages may not apply to you.

This warranty gives you specific legal rights, and you may also have other rights that vary from state to state.

For information about this warranty write:

MEDALLION

GAS PRODUCTS

Distributed by : C.U.I.

P.O. Box 649

Taylors, SC 29687