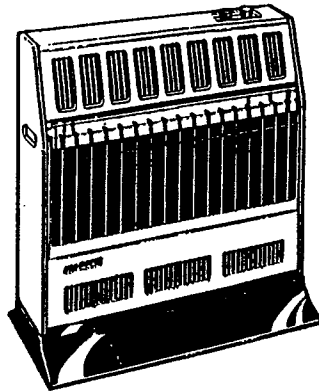


# **GLO-WARM BLUE FLAME UNVENTED PROPANE GAS HEATER**

## **OWNER'S OPERATION AND INSTALLATION MANUAL**

**Model Nos: FBS-18000L.P. & FBS-28000L.P.**



- CAREFULLY READ THIS MANUAL TO UNDERSTAND ALL INSTRUCTIONS ABOUT HOW TO INSTALL AND OPERATE THIS GAS HEATER.
- NEVER USE THIS HEATER IN BEDROOMS, AUTOMOBILES, TRAILERS, RECREATIONAL VEHICLES OR MOBILE HOMES.
- ALWAYS KEEP THIS MANUAL FOR REFERENCE.

### **\*\*\*WARNING\*\*\***

- **Do not store or use gasoline or other flammable vapors and liquids in the vicinity of this or any other appliance.**

#### **- WHAT TO DO IF YOU SMELL GAS**

- Do not try to light any appliance.
- Do not touch any electrical switch. Do not use any phone in your home.
- Immediately call your gas supplier from a neighbor's phone. Follow the gas supplier's instructions.
- If you can not reach your gas supplier, call the fire department.

- **Installation and service must be performed by a qualified installer, service agency, or your gas supplier.**

### **IMPORTANT FOR YOUR SAFETY**

- If the information in this manual is not followed exactly, fire or explosion may result causing property damage, personal injury or loss of life
- Improper installation, adjustment, alteration, service or maintenance can cause injury or property damage. Refer to this manual for correct installation and operational procedures. For assistance or additional information, consult a qualified installer, service agency or your gas supplier.

**Universal Heating, Inc.  
3830 Prospect Ave.  
Yorba Linda, CA 92886 U.S.A. TEL: (800) 444-5106**

**PRODUCT  
FEATURES  
(CONTINUED)**

**PIEZO IGNITION SYSTEM**

This unit has a piezo ignitor system which requires no matches, batteries, or other sources to light the heater.

**THERMOSTATIC HEAT CONTROL**

Thermostat models have a thermostat sensing bulb and a control valve. These features promote maximization of heat comfort and potentially lower gas bills.

**SPECIFICATIONS**

	<b>18,000BTU/Hr</b>	<b>28,000BTU/Hr</b>
Model No.	FBS-18000 L.P.	FBS-28000 L.P.
Gas Type	Propane only	Propane only
B.T.U. (Variable)	9,000-18,000	14,000-28,000
Ignition	Piezo	Piezo
Max. Gas Inlet Pressure	14" W. C.	14" W. C.
Min. Gas Inlet Pressure	11" W. C.	11" W. C.
Pressure Regulator Setting	8" W. C.	8" W. C.
Dimensions (in.) (HxWxD)	23x18 5/8x6 7/8	23x26. 1/8 x6 7/8
Weight (lbs.)	22	26

PLEASE NOTE: Reduce B.T.U. value 4% for each 1000 feet exceeding sea level. If the elevation is above 2000 feet, the heater may shutoff due to the ODS.

**DEFINITIONS**

**BTU/Hr** - heater rating in "British Thermal Units per Hour"

**LP** - liquified petroleum

**SPECIFICATIONS**

**CHECK GAS TYPE**

Use only propane gas. If your gas supply is not propane gas, do not install heater. Contact the dealer where you bought to obtain the proper type heater.

**WARNING**

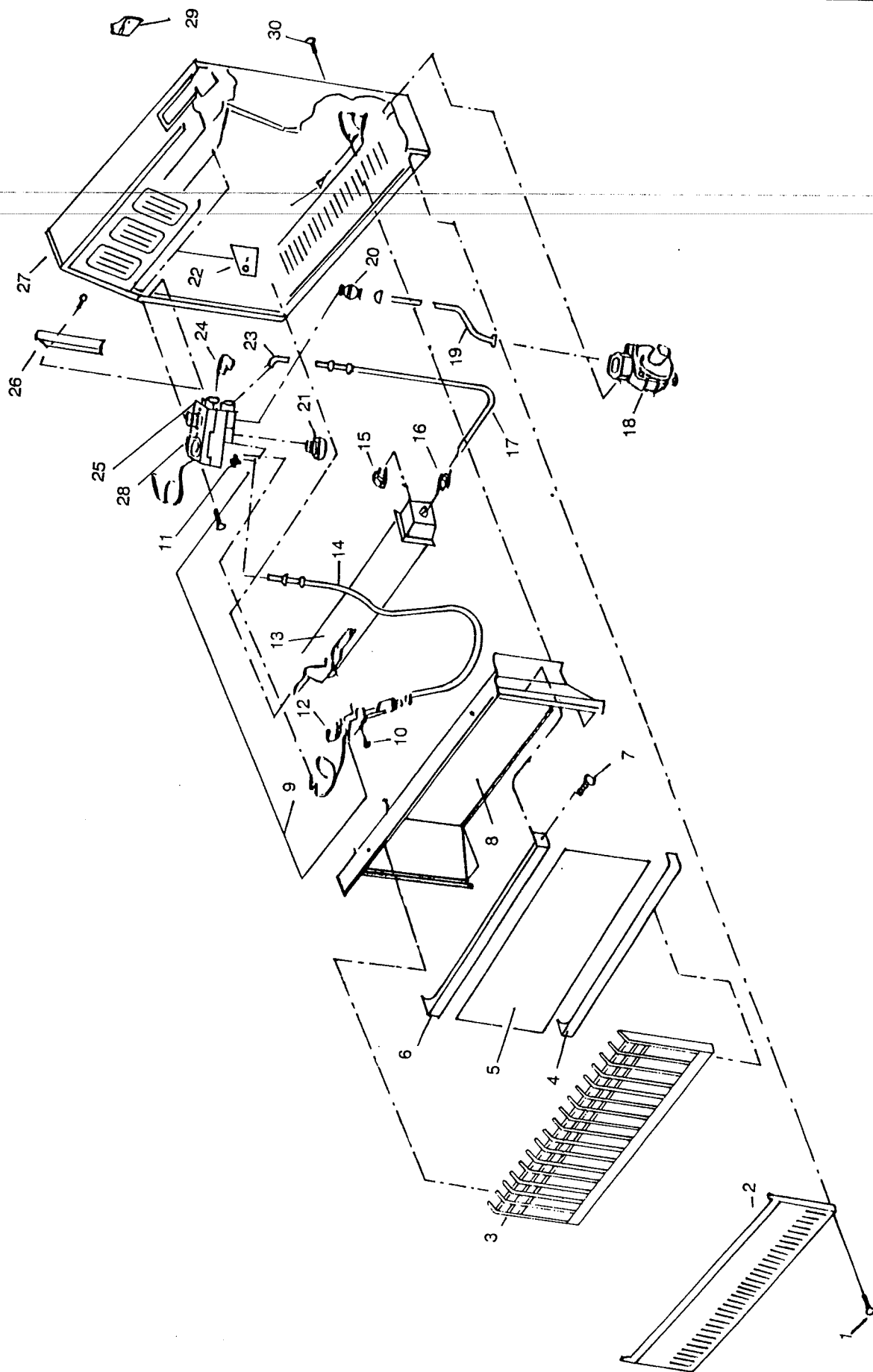
**This heater must have adequate fresh air for proper operation. If not, poor fuel combustion could result. Read instructions to insure proper air circulation around this and other fuel-burning appliances in your home.**

**DANGER**

**CARBON MONOXIDE POISONING MAY LEAD TO DEATH!!!**

## PARTS LIST

# KEY FOR SKETCH	PART #s FOR MODEL FBS-18000 L.P.	PART # s FOR MODEL FBS-28000 L.P.	PART DESCRIPTION	QUANTITY IN BOX
1.	FA-95001	FA-95001	Screw	2
2.	FA-95002A	FA-95002B	Low Front Panel	1
3.	FA-95003A	FA-95003B	Grill Guard	1
4.	FA-95004A	FA-95004B	Bottom Glass Retainer	1
5.	FA-95005A	FA-95005B	Glass Panel	1
6.	FA-95006A	FA-95006B	Top Glass Retainer	1
7.	FA-95007A	FA-95007B	Screw	4
8.	FA-95008A	FA-95008B	Deflector Unit	1
9.	FA-95009	FA-95009	Ignitor Cable	1
10.	FA-950010	FA-950010	Nut M5	2
11.	FA-950011	FA-950011	Pilot Shield	1
12.	FA-950012	FA-950012	ODS Pilot Assembly	1
12-1	FA-950012-1	FA-950012-1	Thermocouple	1
12-2	FA-950012-2	FA-950012-2	Ignitor Electrode	1
13.	FA-950013A	FA-950013B	Burner	1
14.	FA-950014	FA-950014	3/16" Pilot Tubing	1
15.	FA-950015A	FA-950015B	Injector	1
16.	FA-950016	FA-950016	Injector Holder	1
17.	FA-950017	FA-950017	3/8" Outlet (Burner) Tubing	1
18.	FA-950018	FA-950018	Pressure Regulator	1
19.	FA-950019	FA-950019	3/8" Inlet Tubing	1
20.	FA-950020	FA-950020	3/8" NPT Male Connector	1
21.	FA-950021	FA-950021	1/8" NPT Plug	1
22.	FA-950022A	FA-950022B	Pilot Unit Mounting Bracket	1
23.	FA-950023	FA-950023	3/8" NPT Male Elbow	1
24.	FA-950024	FA-950024	3/8" NPT Plug	1
25.	FA-950026	FA-950026	Grill Guard Mounting unit	2
26.	FA-950027A	FA-950027B	Cabinet	1
27.	FA-950028	FA-950028	Piezo Ignitor	1
28.	FA-950029	FA-950029	Mounting Bracket	1
29.	FA-950030	FA-950030	Screw	2
30.	FA-950031	FA-950031	Screw	4



SKETCH DRAWING (Key for numbers on page 21)